

**N<sub>2</sub>O, NO, N<sub>2</sub>, and CO<sub>2</sub> emissions from tropical savanna soils and grassland**

C. Werner et al.

**N<sub>2</sub>O, NO, N<sub>2</sub>, and CO<sub>2</sub> emissions from tropical savanna and grassland of Northern Australia: an incubation experiment with intact soil cores**

**C. Werner<sup>1,2</sup>, K. Reiser<sup>2</sup>, M. Dannenmann<sup>2</sup>, L. B. Hutley<sup>3</sup>, J. Jacobeit<sup>4</sup>, and K. Butterbach-Bahl<sup>2</sup>**

<sup>1</sup>Biodiversity and Climate Research Centre (BiK-F), Senckenberg Gesellschaft für Naturforschung, Senckenberganlage 25, 60325 Frankfurt, Germany

<sup>2</sup>Institute for Meteorology and Climate Research, Institute for Atmospheric Environmental Research (IMK-IFU), Karlsruhe Institute of Technology, Kreuzteckbahnstrasse 19, 82467 Garmisch-Partenkirchen, Germany

<sup>3</sup>School of Environmental and Life Sciences, School of Environmental Research, Charles Darwin University, NT 0909, Australia

<sup>4</sup>Chair of Physical Geography and Quantitative Methods, University of Augsburg, Universitätsstraße 10, 86135, Germany

Title Page

Abstract

Introduction

Conclusions

References

Tables

Figures



Back

Close

Full Screen / Esc

Printer-friendly Version

Interactive Discussion



Received: 15 April 2014 – Accepted: 19 May 2014 – Published: 5 June 2014

Correspondence to: C. Werner (christian.werner@senckenberg.de)

Published by Copernicus Publications on behalf of the European Geosciences Union.

**BGD**

11, 8399–8442, 2014

**N<sub>2</sub>O, NO, N<sub>2</sub>, and CO<sub>2</sub>  
emissions from  
tropical savanna  
soils and grassland**

C. Werner et al.

Title Page

Abstract

Introduction

Conclusions

References

Tables

Figures



Back

Close

Full Screen / Esc

Printer-friendly Version

Interactive Discussion



## Abstract

Strong seasonal variability of hygric and thermal soil conditions are a defining environmental feature in Northern Australia. However, how such changes affect the soil-atmosphere exchange of nitrous oxide (N<sub>2</sub>O), nitric oxide (NO) and dinitrogen (N<sub>2</sub>) is still not well explored. By incubating intact soil cores from four sites (3 savanna, 1 pasture) under controlled soil temperatures (ST) and soil moisture (SM) we investigated the release of the trace gas fluxes of N<sub>2</sub>O, NO and carbon dioxide (CO<sub>2</sub>). Furthermore, the release of N<sub>2</sub> due to denitrification was measured using the helium gas flow soil core technique. Under dry pre-incubation conditions NO and N<sub>2</sub>O emission were very low ( $< 7.0 \pm 5.0 \mu\text{g NO-N m}^{-2} \text{ h}^{-1}$ ;  $< 0.0 \pm 1.4 \mu\text{g N}_2\text{O-N m}^{-2} \text{ h}^{-1}$ ) or in case of N<sub>2</sub>O, even a net soil uptake was observed. Substantial NO (max:  $306.5 \mu\text{g N m}^{-2} \text{ h}^{-1}$ ) and relatively small N<sub>2</sub>O pulse emissions (max:  $5.8 \pm 5.0 \mu\text{g N m}^{-2} \text{ h}^{-1}$ ) were recorded following soil wetting, but these pulses were short-lived, lasting only up to 3 days. The total atmospheric loss of nitrogen was dominated by N<sub>2</sub> emissions (82.4–99.3% of total N lost), although NO emissions contributed almost 43.2% at 50% SM and 30 °C ST. N<sub>2</sub>O emissions were systematically higher for 3 of 12 sample locations, which indicates substantial spatial variability at site level, but on average soils acted as weak N<sub>2</sub>O sources or even sinks. Emissions were controlled by SM and ST for N<sub>2</sub>O and CO<sub>2</sub>, ST and pH for NO, and SM and pH for N<sub>2</sub>.

## 1 Introduction

Tropical savanna ecosystems are one of the most important biomes of the earth and cover approximately 27.6 million km<sup>2</sup> (Hutley and Setterfield, 2008) or 11.5% of the global surface (Scholes and Hall, 1996). However, a clear, globally applicable, delimitation is often difficult and thus all attempts on using those area estimate to scale regional measurements to biome-scale will result in significant uncertainties (Davidson and Kinglerlee, 1997). On a continental scale these areas can be constraint much bet-

BGD

11, 8399–8442, 2014

## N<sub>2</sub>O, NO, N<sub>2</sub>, and CO<sub>2</sub> emissions from tropical savanna soils and grassland

C. Werner et al.

Title Page

Abstract

Introduction

Conclusions

References

Tables

Figures

⏪

⏩

◀

▶

Back

Close

Full Screen / Esc

Printer-friendly Version

Interactive Discussion





and denitrification and underlying environmental conditions. Both processes can occur simultaneously in the soil due to the heterogeneity of soils with regard to gas diffusion and metabolic activity, which can create anaerobic micro-sites even in well aerated soil (Granli and Bøckman, 1995). The primary controls of  $N_2O$  as well as  $NO$  production and emission are the availability of  $NH_4^+$  and  $NO_3^-$ , the content of decomposable organic substrate and the soil aeration status, whereas soil temperature and pH are secondary controls (Granli and Bøckman, 1995). The significant variability of environmental factors (soil, vegetation and hydrological properties) across space and time (e.g., Davidson, 1991; Papen and Butterbach-Bahl, 1999) has often been demonstrated to control the magnitude and variability of  $N_2O$  and  $NO$  emissions from soils. Soil water status mainly regulating soil aeration conditions was found to act as the main control for  $N_2O$  emissions in most tropical soils (e.g., Butterbach-Bahl et al., 2004b; Davidson, 1991; Grover et al., 2012; Linn and Doran, 1984; Werner et al., 2007b), although, due to the complexity of interacting environmental controls, it is difficult to obtain relationships of predictive value (Andersson et al., 2003).

Savanna regions are characterized by climates with distinct wet and dry seasons so that biogeochemical processes and associated trace gas exchange can be expected to also exhibit strong seasonal patterns following the hygric regime (e.g., Andersson et al., 2003; Eamus and Prior, 2001). Such pronounced emission characteristics were also previously reported for seasonal tropical rainforest ecosystems (Breuer et al., 2000; Butterbach-Bahl et al., 2004b; Werner et al., 2007b, 2006). Fire is another characteristic forcing in all savanna ecosystems (Bond and Keeley, 2005). In addition to direct pyrogenic emissions (loss of trace elements to the atmosphere during combustion), fire also effects physicochemical and biological processes, and can thus have a significant direct or indirect effect on processes and controls of N cycling and  $N_2O/NO$  soil-atmosphere exchange (Bustamante et al., 2006; Levine et al., 1996; Rondón et al., 1993; Serça et al., 1998; Weitz et al., 1998). For the reasons cited above, most datasets of N trace gas emissions from savanna soils show a substantial variation of  $N_2O$  and  $NO$  emissions on a seasonal scale following the hygric conditions (e.g., Castaldi et al.,

**BGD**

11, 8399–8442, 2014

## **$N_2O$ , $NO$ , $N_2$ , and $CO_2$ emissions from tropical savanna soils and grassland**

C. Werner et al.

Title Page

Abstract

Introduction

Conclusions

References

Tables

Figures

◀

▶

◀

▶

Back

Close

Full Screen / Esc

Printer-friendly Version

Interactive Discussion



2004, 2006; Pinto et al., 2002), whereas on a site scale emissions are mostly controlled by the variability of soil properties (Castaldi et al., 2004, 2006).

There is some literature available investigating the soil–atmosphere exchange of NO, N<sub>2</sub>O and CO<sub>2</sub>, however, information of N<sub>2</sub> losses via microbial denitrification is not available for savanna systems and also still scarce for other terrestrial ecosystems (Butterbach-Bahl et al., 2013; Dannenmann et al., 2011; Groffman et al., 2006).

In order to investigate gaseous emissions of C (CO<sub>2</sub>) and N (N<sub>2</sub>O, NO, N<sub>2</sub>) compounds from tropical savanna and grassland systems in Northern Australia, we took intact soil cores from various field sites and performed a range of incubation experiments under controlled thermal and hygric conditions. The scope of the study is (a) to assess the magnitude of trace gas release under a range of environmental conditions typical for tropical savanna systems of Northern Australia, (b) to deduce environmental regulators leading to the observed emissions, and (c) to contrast the findings from natural savanna soil cores to samples derived from an improved pasture site.

## 2 Material and methods

### 2.1 Site description and soil core sampling

In this study we investigated two field sites approximately 30 km east of Darwin, Northern Territory, Australia, and extracted intact soil cores for our laboratory incubation experiments. The first site is located at 12°30′ S, 131°05′ E at 18–22 m a.s.l., Howard Springs (HS). Vegetation was *Eucalyptus tetradonta* and *Eucalyptus minanta* dominated open-forest savanna. The second site was established on managed grassland at Beatrice Hill Farm, Middle Point, located at 12°36.5′ S, 131°18′ E, approximately 25 km south-east of the savanna site.

This part of the Australian north is characterized by a strong seasonality of precipitation, with a pronounced dry season ranging from May to September. The dry season is followed by a period of intense convective thunderstorms (“build-up”), which

**BGD**

11, 8399–8442, 2014

## N<sub>2</sub>O, NO, N<sub>2</sub>, and CO<sub>2</sub> emissions from tropical savanna soils and grassland

C. Werner et al.

Title Page

Abstract

Introduction

Conclusions

References

Tables

Figures

◀

▶

◀

▶

Back

Close

Full Screen / Esc

Printer-friendly Version

Interactive Discussion









(Brookes et al., 1985). We sampled and sieved soil from cores of each field position. Three sub-samples were immediately extracted with 60 mL 0.5 M K<sub>2</sub>SO<sub>4</sub>, while another three samples were fumigated with chloroform vapor for 24 h and extracted similarly. Total organic carbon (TOC) and total chemically bound nitrogen (TNb) was measured using a TOC analyzer (DIMATOC 2000, Dimatec Analysentechnik GmbH, Essen, Germany) and a coupled chemoluminescence detector, respectively. See Dannenmann et al. (2006) for more details.

### 2.3 Incubation setup and detection of N<sub>2</sub>O, NO, N<sub>2</sub> and CO<sub>2</sub>

In order to investigate the C and N trace gas exchange of the soil samples under a variety of environmental controls, we designed an incubation experiment. Soil water content of the stored cores was determined prior to the experiment gravimetrically by drying samples derived from the spare replicate core. The samples were dried at 105 °C for 24 h. Bulk density of the samples was also measured and used to calculate the pore volume and consequently the amount of water required to reach 25, 50 and 75 % water filled pore space (WFPS).

$$\text{WFPS}[\%] = \frac{W_{\text{vol}}}{\left(1 - \frac{\text{BD}}{2.65}\right)}$$

$W_{\text{vol}}$  volumetric water content,

BD bulk density [g cm<sup>-3</sup>],

2.65 particle density [g cm<sup>-3</sup>].

The cores were first exposed to 20 °C temperature for pre-incubation before the air-dried samples were wetted to the desired soil moisture levels of 25 % WFPS (M25), 50 % WFPS (M50), and 75 % WFPS (M75), respectively: at these points the weight of the watered cores was recorded. To avoid a bias of follow-up measurements, all three

**BGD**

11, 8399–8442, 2014

## N<sub>2</sub>O, NO, N<sub>2</sub>, and CO<sub>2</sub> emissions from tropical savanna soils and grassland

C. Werner et al.

Title Page

Abstract

Introduction

Conclusions

References

Tables

Figures

◀

▶

◀

▶

Back

Close

Full Screen / Esc

Printer-friendly Version

Interactive Discussion



soil moisture levels were analyzed with independent cores. The moisture content was adjusted bi-daily by weighing the cores and adding evaporated water at least one hour prior to the measurements. Note that we report average trace gas fluxes for the second segment of each incubation step in order to exclude transition effects from raising temperatures. Soil cores were sealed with gas-permeable foil immediately after the sampling procedure to minimize the evaporative loss of water. During the course of the incubation period, the temperature was step-wise increased from 20 to 30 and to 40 °C. In-between measurement events, all soil cores were incubated in thermostat cabinets (Lovibond ET 651-8, Tintometer GmbH, Dortmund, Germany) at the prescribed incubation temperature. The cabinets were ventilated with low-flow pumps to prevent CO<sub>2</sub> enrichment or temperature gradients.

The air-dried soil cores were measured for up to 10 days prior to the initial wetting at each incubation run to record the baseline emission and to test the detection setup. N<sub>2</sub>O, NO and CO<sub>2</sub> emissions were measured approximately every second to third day. After the initial wetting, soil cores were incubated and measured until the initial “pulse-event” leveled off and flux rates approached a relatively stable emission level. Afterwards, the temperature was raised to 30 °C and measurements continued. After 2–3 weeks of incubation at 30 °C, the temperature was increased again by 10 °C to 40 °C. A schematic of the incubation and measurement schedule is given in Fig. 2.

The static chamber technique (e.g. Smith et al., 1995) was used to measure N<sub>2</sub>O and CO<sub>2</sub> fluxes. The soil cores were closed with gas-tight lids equipped with a port and septum for gas sampling. The headspace of each of the 12 soil cores (T1P1, T1P3, T1P5, and T3P1; *n* = 3) was determined individually (average headspace volume 1.54 L). Four gas samples of 5 mL chamber air were drawn from the port at 0, 20, 40, and 60 min after closure using 20 mL plastic syringes fitted with three-way stop-cocks and injected into vacuumized sampling veils. The sample veils and a set of veils with standard gas mixture for calibration (0.4 ppmv N<sub>2</sub>O, 400 ppmv CO<sub>2</sub>; Air Liquide, Düsseldorf, Germany) were placed into two auto-sampler systems (HT280T, HTA s.r.l., Brescia, Italy) attached to gas chromatographs (SRI 8610C, SRI Instruments, Torrance,

**BGD**

11, 8399–8442, 2014

**N<sub>2</sub>O, NO, N<sub>2</sub>, and CO<sub>2</sub>  
emissions from  
tropical savanna  
soils and grassland**

C. Werner et al.

Title Page

Abstract

Introduction

Conclusions

References

Tables

Figures



Back

Close

Full Screen / Esc

Printer-friendly Version

Interactive Discussion









38 % (M50), and 37 % (M75) of the initial pulse emission response recorded at D0. After two days (D+2), CO<sub>2</sub> emissions declined further to levels of 26–34 % before stabilizing at those levels and eventually increasing again (see Fig. 3). During the pulse emission event (D0–D+2), the average CO<sub>2</sub> emission was  $62.8 \pm 43.7 \text{ mg C m}^{-2} \text{ h}^{-1}$  (min: 7.7 mg C m<sup>-2</sup> h<sup>-1</sup>, max: 195.1 mg C m<sup>-2</sup> h<sup>-1</sup>). Pulse intensity was found to differ significantly between natural savanna soil cores of transect T1 ( $55.5 \pm 39.8 \text{ mg C m}^{-2} \text{ h}^{-1}$ ) and improved pasture at transect T3 ( $75.1 \pm 46.4 \text{ mg C m}^{-2} \text{ h}^{-1}$ ), but not between individual transect positions. After the initial pulse event, CO<sub>2</sub> emissions remained relatively stable for all three moisture levels at 20 °C soil temperature (Fig. 3).

Average CO<sub>2</sub> emission at 20 °C (after the pulse event) were  $19.2 \pm 6.4 \text{ mg C m}^{-2} \text{ h}^{-1}$  (M25),  $23.1 \pm 6.9 \text{ mg C m}^{-2} \text{ h}^{-1}$  (M50), and  $36.2 \pm 18.5 \text{ mg C m}^{-2} \text{ h}^{-1}$  (M75), indicating a direct link between soil moisture and CO<sub>2</sub> emission strength. Fluxes recorded at M75 were significantly higher than those obtained at M25 and M50 ( $p < 0.001$ ). In contrast to the pulse emission, CO<sub>2</sub> emissions from T3 ( $30.5 \pm 16.2 \text{ mg C m}^{-2} \text{ h}^{-1}$ ) were not significantly higher than those from T1 ( $25.2 \pm 13.9 \text{ mg C m}^{-2} \text{ h}^{-1}$ ). No significant difference between individual transect positions was detected. It is noteworthy that CO<sub>2</sub> emissions for some individual cores (T1P1R1, T1P3R1) were substantially higher for M75 conditions than those from the other two replicates, resulting in high standard deviations. At 30 °C soil temperature, average CO<sub>2</sub> emissions were again not found to differ significantly between T1 ( $36.0 \pm 17.2 \text{ mg C m}^{-2} \text{ h}^{-1}$ ) and T3 ( $43.3 \pm 20.8 \text{ mg C m}^{-2} \text{ h}^{-1}$ ,  $n = 45$ ), but moisture levels were again significantly correlated with higher emissions (M25:  $34.1 \pm 14.5 \text{ mg C m}^{-2} \text{ h}^{-1}$ , M50:  $35.6 \pm 20.4 \text{ mg C m}^{-2} \text{ h}^{-1}$ , M75:  $44.0 \pm 18.6 \text{ mg C m}^{-2} \text{ h}^{-1}$ ). No significant differences were recorded for CO<sub>2</sub> fluxes from cores originating from different transect positions, indicating that physico-chemical soil properties did not have a major influence on CO<sub>2</sub> emissions. Since no data is available from the 40 °C incubation temperature run with M25 cores, we do not report results for transect positions or transects, as the higher moisture levels (M50 and M75 only) lead to biased mean fluxes due to the strong response of CO<sub>2</sub> fluxes to moisture levels. See the discussion section for an in-depth analysis of temperature effects on emissions.

## N<sub>2</sub>O, NO, N<sub>2</sub>, and CO<sub>2</sub> emissions from tropical savanna soils and grassland

C. Werner et al.

[Title Page](#)[Abstract](#)[Introduction](#)[Conclusions](#)[References](#)[Tables](#)[Figures](#)[◀](#)[▶](#)[◀](#)[▶](#)[Back](#)[Close](#)[Full Screen / Esc](#)[Printer-friendly Version](#)[Interactive Discussion](#)

### 3.2.2 N<sub>2</sub>O emissions

Nitrous oxide emissions under pre-incubation conditions were low and did not differ significantly between transect positions or transects (T1:  $0.0 \pm 1.4 \mu\text{g N m}^{-2} \text{h}^{-1}$ , T3:  $-0.2 \pm 1.9 \mu\text{g N m}^{-2} \text{h}^{-1}$ ). We measured low N<sub>2</sub>O uptake or zero N<sub>2</sub>O emissions for 8 out of 12 cores under these conditions (min:  $-6.2 \mu\text{g N m}^{-2} \text{h}^{-1}$ ), but variance ranged from 0.3 to  $3.6 \mu\text{g N m}^{-2} \text{h}^{-1}$ . Increased N<sub>2</sub>O emissions were detected immediately after watering the cores (D0), but average emissions during the defined peak event (D0 – D+2) were relatively modest for 33 out of 36 cores sampled at T1 (avg:  $3.2 \pm 3.1 \mu\text{g N m}^{-2} \text{h}^{-1}$ , max:  $13.7 \mu\text{g N m}^{-2} \text{h}^{-1}$ ) and T3 (avg:  $4.9 \pm 6.2 \mu\text{g N m}^{-2} \text{h}^{-1}$ , max:  $24.2 \mu\text{g N m}^{-2} \text{h}^{-1}$ ), but the results for T1 and T3 were not significantly different. Very strong N<sub>2</sub>O emissions were recorded for three individual cores at M75 (T1P1R1:  $85.8 \mu\text{g N m}^{-2} \text{h}^{-1}$ , T1P1R2:  $106.2 \mu\text{g N m}^{-2} \text{h}^{-1}$ , T1P3R1:  $180.2 \mu\text{g N m}^{-2} \text{h}^{-1}$ ) after a delay of two or six days and remained systematically higher throughout the incubation experiment (see Fig. 4). Due to their distinctly different emission patterns, those three cores are excluded from further analysis here and discussed in detail at the end of this section. Intensity of pulse emissions correlated positively with saturation levels (M25:  $2.7 \pm 3.2 \mu\text{g N m}^{-2} \text{h}^{-1}$ , M50:  $3.2 \pm 4.1 \mu\text{g N m}^{-2} \text{h}^{-1}$ , M75:  $5.8 \pm 5.0 \mu\text{g N m}^{-2} \text{h}^{-1}$ ). After the initial pulse, N<sub>2</sub>O emissions at 20 °C were  $1.2 \pm 3.8 \mu\text{g N m}^{-2} \text{h}^{-1}$  (T1) and  $0.6 \pm 1.0 \mu\text{g N m}^{-2} \text{h}^{-1}$  (T3), and no significant differences were detected for transect positions or transects. At 30 °C, N<sub>2</sub>O emissions increased slightly to  $1.4 \pm 1.8 \mu\text{g N m}^{-2} \text{h}^{-1}$  (T1) and  $2.6 \pm 5.1 \mu\text{g N m}^{-2} \text{h}^{-1}$  (T3). At 40 °C, N<sub>2</sub>O emission substantially increased over the results obtained at 30 °C, but due to missing results for the M25 incubation run, we do not report site averages here.

### 3.2.3 NO emissions

Pre-incubation emissions were  $6.7 \pm 4.3 \mu\text{g N m}^{-2} \text{h}^{-1}$  (T1) and  $7.0 \pm 5.0 \mu\text{g N m}^{-2} \text{h}^{-1}$  (T3), and no significant differences were detected between the transect positions or

BGD

11, 8399–8442, 2014

## N<sub>2</sub>O, NO, N<sub>2</sub>, and CO<sub>2</sub> emissions from tropical savanna soils and grassland

C. Werner et al.

Title Page

Abstract

Introduction

Conclusions

References

Tables

Figures

◀

▶

◀

▶

Back

Close

Full Screen / Esc

Printer-friendly Version

Interactive Discussion





transects. Large NO emission pulses of 27.7–306.5  $\mu\text{g N m}^{-2} \text{h}^{-1}$  were recorded after the addition of water at D0 (see Fig. 5). Furthermore, NO emission strength was negatively correlated with water saturation (M25:  $141.2 \pm 70.9 \mu\text{g N m}^{-2} \text{h}^{-1}$ , M50:  $48.4 \pm 26.6 \mu\text{g N m}^{-2} \text{h}^{-1}$ , M75:  $22.1 \pm 15.2 \mu\text{g N m}^{-2} \text{h}^{-1}$ ), and pulse strength did not significantly differ between transects. NO emissions at the following day (D+1) dropped sharply to 16 % (M25), 40 % (M50), and 28 % (M75) of the initial pulse emission response at D0. After two days (D+2), NO emissions further decreased to 10–26 % of the emission of D0. After the initial pulse, average NO emissions at 20 °C were below pre-incubation levels and ranged from  $3.2 \pm 1.8$  to  $5.8 \pm 2.9 \mu\text{g N m}^{-2} \text{h}^{-1}$  for the four transect positions being  $4.9 \pm 2.7 \mu\text{g N m}^{-2} \text{h}^{-1}$  at T1 and  $3.2 \pm 1.8 \mu\text{g N m}^{-2} \text{h}^{-1}$  at T3 (differences not significant). NO emissions increased at 30 °C incubation temperature to  $6.7 \pm 4.3 \mu\text{g N m}^{-2} \text{h}^{-1}$  (T1) and  $6.5 \pm 6.9 \mu\text{g N m}^{-2} \text{h}^{-1}$  (T3), respectively. At 40 °C, a marked increase of NO emission was observed for the majority of soil cores watered to 50 % WFPS, while NO emissions at 75 % WFPS only increased slightly or remained constant (see Fig. 5). Again, as no M25 measurements are available, we do not give site averages for 40 °C, but the significant increase of NO emissions can be highlighted when M50 and M75 NO emissions obtained at 40 °C are compared to the fluxes measured under 30 °C. NO emissions under medium moisture levels (M50) increased from  $6.7 \pm 5.1 \mu\text{g N m}^{-2} \text{h}^{-1}$  at 30 °C to  $52 \pm 87.5 \mu\text{g N m}^{-2} \text{h}^{-1}$ , while high moisture levels (M75) only led to an increase from  $5.0 \pm 4.9 \mu\text{g N m}^{-2} \text{h}^{-1}$  to  $11.5 \pm 13.7 \mu\text{g N m}^{-2} \text{h}^{-1}$ . A negative correlation between moisture levels and NO emission strength was observed for all episodes of the incubation experiment. We did not detect significant differences between both land-use types for temperatures up to 30 °C, but at 40 °C, NO emission was significantly higher at the savanna transect than at the improved pasture.

### 3.2.4 N<sub>2</sub> emissions

An incubation setup with the same number of replications as performed for N<sub>2</sub>O, NO and CO<sub>2</sub> measurements was not feasible due to the time required to perform

BGD

11, 8399–8442, 2014

## N<sub>2</sub>O, NO, N<sub>2</sub>, and CO<sub>2</sub> emissions from tropical savanna soils and grassland

C. Werner et al.

Title Page

Abstract

Introduction

Conclusions

References

Tables

Figures

⏪

⏩

◀

▶

Back

Close

Full Screen / Esc

Printer-friendly Version

Interactive Discussion









true for savanna soils of the Daly River south of our site, which receives substantially less annual precipitation ( $0.02 \text{ kg N ha}^{-1} \text{ yr}^{-1}$ , Grover et al., 2012).

For total site exchange, it has to be noted that termite mounds have been identified as hot-spots of  $\text{N}_2\text{O}$  emissions in savannas (e.g., Brümmer et al., 2009b) and are abundant in savannas of tropical Australia (Dawes-Gromadzki, 2008), but the total contribution to the soil–atmosphere exchange is highly variable in space. It was also reported that below-ground termite activity can (often only temporarily) add to on-site variability of measured in-situ fluxes (Livesley et al., 2011). Very low  $\text{N}_2\text{O}$  emission or even soil  $\text{N}_2\text{O}$  uptake was also previously reported for tropical savanna soils under dry season conditions (Andersson et al., 2003; Castaldi et al., 2006; Donoso et al., 1993; Livesley et al., 2011; Sanhueza et al., 1990), and low mineral N content was considered to be a major controlling factor (Rosenkranz et al., 2006), although many other controls and processes are discussed (Chapuis-Lardy et al., 2007).

We also observed very low  $\text{N}_2\text{O}$  emissions and occasional  $\text{N}_2\text{O}$  uptake by the soil cores with a maximum soil uptake rate of  $-6.2 \mu\text{g N m}^{-2} \text{ h}^{-1}$  during pre-incubation measurements of our air-dried soil samples at  $20^\circ\text{C}$ . At low (M25) and medium (M50) moisture conditions, average  $\text{N}_2\text{O}$  emissions ranged from  $0.3$  to  $5.4 \mu\text{g N m}^{-2} \text{ h}^{-1}$  and were inline with the low  $\text{N}_2\text{O}$  emissions previously observed from nearby sites (Grover et al., 2012; Livesley et al., 2011).

The  $\text{N}_2\text{O}$  emissions observed for the improved pasture site under dry to medium moisture levels, were also low and did not differ significantly to the natural savanna site, which was to be expected as the analysis of physicochemical properties did not reveal significant differences between the two plots either (Table 1). This similarity is somewhat remarkable as the improved pasture site did receive substantial amounts of P and N over 40 years. Similar results were reported for young and old pastures under dry season conditions in the Daly region, Northern Territory, Australia, but emissions from old pasture under wet conditions were higher ( $> 25 \mu\text{g N m}^{-2} \text{ h}^{-1}$ ). A direct comparison is difficult, however, as soil water content reported (dry:  $\sim 5\%$  WFPS, medium:  $\sim 37\%$  WFPS, wet:  $\sim 53\%$ ) does not align with our incubation setup. However, the

**BGD**

11, 8399–8442, 2014

## $\text{N}_2\text{O}$ , $\text{NO}$ , $\text{N}_2$ , and $\text{CO}_2$ emissions from tropical savanna soils and grassland

C. Werner et al.

Title Page

Abstract

Introduction

Conclusions

References

Tables

Figures

◀

▶

◀

▶

Back

Close

Full Screen / Esc

Printer-friendly Version

Interactive Discussion



general range of reported in-situ flux measurements from savanna and pasture shows good agreement with our laboratory results (Grover et al., 2012).

As stated before, we excluded the results for three of the nine savanna soil cores measured with 75% WFPS from the previous discussion as they clearly did exhibit different emission patterns. In contrast to the other cores, N<sub>2</sub>O emission increases of those cores were delayed by 2 to 3 days, and strong N<sub>2</sub>O emissions (T1P1R1: 33.7 ± 29.8 μg N m<sup>-2</sup> h<sup>-1</sup>, T1P1R2: 26.3 ± 17.8 μg N m<sup>-2</sup> h<sup>-1</sup>, T1P3R1: 52.3 ± 37.0 μg N m<sup>-2</sup> h<sup>-1</sup>, *n* = 8) were measured throughout the incubation run. If those outlier results are included (see Table 2), average N<sub>2</sub>O emissions are 1.4 to 3.8 times higher and thus substantially higher than those reported for savanna soil and on par with reported pasture fluxes under wet conditions (see, Grover et al., 2012). Although the cause for these substantially different emission patterns could not be determined, we hypothesize that small-scale mineralization hotspots (e.g., due to availability of organic material from dead soil fauna or plant residuals) account for this observation. These findings underline the importance of taking spatial heterogeneity into account when designing field samplings, and it is a strong indication that more spatial replicates would help to fully assess site scale soil–atmosphere. However, the nature of incubation experiments (i.e., the need for timely replicate sampling, laboratory constrains and climate controlled storage) severely limits the number of samples, though the gas pooling technique may offer ways to overcome spatial heterogeneity (Arias-Navarro et al., 2013; Morris et al., 2013).

Nitrous oxide emissions were positively correlated with temperature and soil moisture (see Table 2), and their variations were found to explain 58.6 and 41.3%, respectively, of the variance of N<sub>2</sub>O emissions if a simple linear two-parameter regression model was used (pmvd method, total variance: 46.0%). Inclusion of soil properties did not further improve the linear model (see decomposition plot, Fig. 6). Previous results also show a positive correlation between soil temperature and N<sub>2</sub>O emissions (Castaldi et al., 2010), but other authors found no clear linear correlation (Brümmer et al., 2008; Scholes et al., 1997), although observing clear diurnal patterns (Brümmer et al., 2008).

**N<sub>2</sub>O, NO, N<sub>2</sub>, and CO<sub>2</sub> emissions from tropical savanna soils and grassland**

C. Werner et al.

Title Page

Abstract

Introduction

Conclusions

References

Tables

Figures



Back

Close

Full Screen / Esc

Printer-friendly Version

Interactive Discussion



## N<sub>2</sub>O, NO, N<sub>2</sub>, and CO<sub>2</sub> emissions from tropical savanna soils and grassland

C. Werner et al.

Title Page

Abstract

Introduction

Conclusions

References

Tables

Figures

◀

▶

◀

▶

Back

Close

Full Screen / Esc

Printer-friendly Version

Interactive Discussion



Previous studies from tropical savanna and seasonally dry tropical forest sites identified changes in WFPS to dominate the N<sub>2</sub>O emission patterns (Brümmer et al., 2008; Castaldi et al., 2010; Davidson et al., 1993; Grover et al., 2012; Rees et al., 2006), but in general, N<sub>2</sub>O emissions from undisturbed savanna soil ranked lowest for seasonally dry ecosystems due to low nutrient availability and soil textures favoring quick drainage (Castaldi et al., 2006). In accordance, significant positive correlations were reported for clay content and soil volumetric water content (Castaldi et al., 2004), factors which strongly determine the pore space and water saturation and thus soil aeration and anaerobiosis. It is well established that oxygen saturation in the soil air controls the level of aerobic nitrification and anaerobic denitrification microbial activity (Davidson et al., 1993) and thus nitrogen pathways and process rates. Compared to tropical biomes of seasonally dry or humid tropical forests (e.g., Butterbach-Bahl et al., 2004b; Gharahi Ghehi et al., 2012; Kiese et al., 2003; Werner et al., 2007b), the annual N<sub>2</sub>O emissions from savanna soils seem to be substantially lower, which is hypothesized to originate from N depletion via pyro-denitrificatory losses (bush fires), shorter wet periods with prevailing denitrificatory conditions in combination with well-drained soils and lower amounts of total nitrogen cycling within the system (Castaldi et al., 2006; Davidson et al., 2001). Other studies have not found significant effects of soil moisture on N<sub>2</sub>O emissions under in-situ conditions (Livesley et al., 2011), and is assumed that a lack of seasonality and low nitrogen levels provide the rationale for this observation.

### 4.3 NO emissions

Nitric oxide emissions measured at low moisture conditions (M25) and 20 to 30 °C soil temperature were  $6.4 \pm 2.4$  and  $9.1 \pm 4.8 \mu\text{g N m}^{-2} \text{h}^{-1}$ , respectively, and therefore higher than the fluxes reported for African sites during the dry season ( $1.6$ – $2.2 \mu\text{g m}^{-2} \text{h}^{-1}$ , Meixner et al., 1997; Serça et al., 1998) but comparable to dry season conditions observed in Venezuela (Cárdenas et al., 1993). A link between the magnitude of NO emissions from savanna soil and soil water content and nutrient availability has been postulated by various authors (Cárdenas et al., 1993; Feig et al., 2008; Parsons et al.,

1996; Poth et al., 1995; Rondón et al., 1993). It was reported that soil moisture is the dominant factor whenever it is not limiting the NO flux, but emission strength is modulated by daily variation of soil temperature (Meixner et al., 1997). A significant correlation of NO emissions with soil pH was also reported (Poth et al., 1995), and it is in agreement with the outcome of our relative importance analysis where pH scored second after soil temperature in explaining observed NO emissions post pulse (Fig. 6). The low score of soil moisture in this analysis can be explained by the non-linear response of NO to changing soil moisture levels and is also reflected in the low total explanatory power of 19.4 %. High soil temperatures (40 °C) in combination with medium moisture levels (M50) resulted in strongest NO emissions ( $65.0 \pm 97.8 \mu\text{g N m}^{-2} \text{h}^{-1}$ ), with high intra-core variability. This indicates a substantial importance of aerobic ammonia oxidation based pathways (Butterbach-Bahl et al., 2013) for NO emission. Previous studies from African savannas on sandy soils suggest that maximum NO emissions occur at a narrow WFPS range between 10 to 25 % WFPS (Aranibar et al., 2004; Feig et al., 2008; Otter et al., 1999) and that a strong linear increase of NO emissions occurs with increasing temperatures starting at 25 °C to 30 °C (Aranibar et al., 2004). It was also reported that NO emission decreases again at a soil temperature exceeding 40 °C (Passianoto et al., 2004), but such extreme soil temperatures were not included in our experimental setup. In accordance with this, the analysis of T1 site cores (savanna) showed strongest emissions for pulsing after the initial rewetting and the following incubation steps for the lowest soil moisture treatment (M25). It is noteworthy that pulse emissions again were slightly stronger at M25 conditions for pasture cores, the following measurements revealed no difference in emission strength between the three moisture levels at the first temperature interval. At 30 °C soil temperature, emissions for the driest cores remained low but M50 cores exhibited higher NO emissions (see Fig. 5).

Unfortunately, no measurements were conducted for low moisture conditions (M25) and high soil temperatures (40 °C) during the first incubation sequence of our work and thus, we can only speculate that NO emissions at low moisture levels (M25) would

**BGD**

11, 8399–8442, 2014

## **N<sub>2</sub>O, NO, N<sub>2</sub>, and CO<sub>2</sub> emissions from tropical savanna soils and grassland**

C. Werner et al.

Title Page

Abstract

Introduction

Conclusions

References

Tables

Figures

◀

▶

◀

▶

Back

Close

Full Screen / Esc

Printer-friendly Version

Interactive Discussion



have even exceeded our maximum NO emissions recorded due to nitrification activity peaking at moisture levels below 50 % WFPS (see literature citations above).

#### 4.4 N<sub>2</sub> emissions and total gaseous nitrogen losses

Dinitrogen emissions varied greatly between the different incubation setups (17–2350  $\mu\text{g N m}^{-2} \text{h}^{-1}$ ), and this range is comparable to results reported for temperate forests (Butterbach-Bahl et al., 2013; Dannenmann et al., 2008). The N<sub>2</sub> emission rates were clearly dominated by soil saturation (see Table 2 and Fig. 6). Average N<sub>2</sub> emissions for savanna soil below 50 % WFPS and under any implemented temperature setting was ranging from 45 to 108  $\mu\text{g N m}^{-2} \text{h}^{-1}$ , while average N<sub>2</sub> emissions with highest water saturation (M75) were ranging from 627 to 1201  $\mu\text{g N m}^{-2} \text{h}^{-1}$ . It is thus not surprising that the analysis of relative importance revealed that approximately 75 % of the variance of N<sub>2</sub> emissions was explained by changes in WFPS. Variations in pH accounted for another 23 % of variance (Fig. 6), while the other factors did not contribute to explain the observed N<sub>2</sub> emissions. The dominance of WFPS is in line with common knowledge about the functioning of denitrification, given that N<sub>2</sub> production is catalyzed by the enzyme N<sub>2</sub>O-reductase, which in-turn is up-regulated by low oxygen concentrations (Spiro, 2012). From calculating fractions it is clear that N<sub>2</sub> is the dominant compound of gaseous losses, often exceeding N<sub>2</sub>O and NO emissions by several magnitudes (Table 3). N<sub>2</sub> accounted for 82–99 % of all gaseous N losses from savanna soils for the investigated incubation intervals, except for the 50 % WFPS/40 °C setup, where strong NO emissions were accounting for 43 % of all N emissions.

The N<sub>2</sub>-dominated N gas product ratios across all soil moisture levels might appear surprising at first, since strong N<sub>2</sub> soil emission has been associated with strictly anaerobic soil conditions and the investigated sandy soil textures may facilitate good aeration and thus impair formation of anaerobic microsites. It is however increasingly recognized that our previous knowledge on rather low N<sub>2</sub> loss from ecosystems is falsified by systematic but irreproducible underestimation of N<sub>2</sub> emission estimates due to the failure of the widely applied acetylene inhibition technique to indirectly estimate N<sub>2</sub>

BGD

11, 8399–8442, 2014

## N<sub>2</sub>O, NO, N<sub>2</sub>, and CO<sub>2</sub> emissions from tropical savanna soils and grassland

C. Werner et al.

Title Page

Abstract

Introduction

Conclusions

References

Tables

Figures

⏪

⏩

◀

▶

Back

Close

Full Screen / Esc

Printer-friendly Version

Interactive Discussion









5.8±5.0 μg N m<sup>-2</sup> h<sup>-1</sup> for our highest watering intensity (M75) the amount of N released to the atmosphere was still minor. It has to be noted that, due to experimental design restrictions (consecutive incubation variations of temperature), we only measured initial pulse emissions under rather low temperature settings, and given the observed positive correlation of N<sub>2</sub>O emissions with temperature, pulse emissions at higher temperatures would have been even more pronounced.

Strong NO pulse emissions were reported for many sites from seasonally-dry tropics (Brümmer et al., 2008; Levine et al., 1996; Scholes et al., 1997) and rainforests with seasonality (Butterbach-Bahl et al., 2004b) and are now an essential part in models simulating global NO emissions (Steinkamp and Lawrence, 2011; Yan et al., 2005; Yienger and Levy, 1995). The immediate emission of NO after watering was also observed by Pinto et al. (2002), who measured up to 100-fold increased NO emissions above pre-watering levels to 105 μg N m<sup>-2</sup> h<sup>-1</sup>, but noted that results varied substantially between collars. These results are inline with our observed peak pulse emissions, which also varied between 27.7 and 306.5 μg N m<sup>-2</sup> h<sup>-1</sup>. In contrast to N<sub>2</sub>O peak emission, the response was negatively correlated with moisture saturation. For soils of seasonally dry tropical rainforests in Mexico and Australia, high rates of NO emissions and quick temporal responses to the first rainfall events were observed (Butterbach-Bahl et al., 2004b; Davidson et al., 1993, 1991). The authors also state that rainfall events during the wet season triggered only minor emission events, providing pointers that the duration and severity of antecedent dry periods ultimately determines the magnitude of response of NO emissions to wetting events (Butterbach-Bahl et al., 2004a; Davidson et al., 1993). Thus, these pronounced pulse emissions events are thought to contribute substantially to the annual total of NO emissions (Butterbach-Bahl et al., 2004b; Ludwig et al., 2001).

Due to incubation design and the required destructive sampling of soil cores for N<sub>2</sub> analysis, pulsing effects on N<sub>2</sub> emission were not investigated (N<sub>2</sub> analysis for the various incubation conditions was carried out after the N<sub>2</sub>O, NO and CO<sub>2</sub> incubation runs were completed).

## N<sub>2</sub>O, NO, N<sub>2</sub>, and CO<sub>2</sub> emissions from tropical savanna soils and grassland

C. Werner et al.

[Title Page](#)[Abstract](#)[Introduction](#)[Conclusions](#)[References](#)[Tables](#)[Figures](#)[⏪](#)[⏩](#)[◀](#)[▶](#)[Back](#)[Close](#)[Full Screen / Esc](#)[Printer-friendly Version](#)[Interactive Discussion](#)

## 5 Conclusion

We reported the N<sub>2</sub>O, NO, N<sub>2</sub> and CO<sub>2</sub> emission response of intact soil cores from tropical savanna and pasture to a range of climatic conditions. The laboratory analysis of intact soil cores allows for an analysis under controlled soil moisture and temperature conditions while largely preserving the structural components of the soil column, although influence of flora and macro-fauna is lost compared to in-situ measurements.

Key findings of our analysis are:

1. Soil–atmosphere exchange of NO and CO<sub>2</sub> under late dry season conditions was very low and for N<sub>2</sub>O often even negative.
2. Total atmospheric loss of nitrogen was dominated by N<sub>2</sub> emissions under all but one tested soil climatic conditions (82.4–99.3 % of total gaseous N loss), but NO emissions contributed almost 43.2 % to the total gaseous loss at 50 % WFPS and 30 °C soil temperature.
3. N<sub>2</sub>O emissions were substantially higher for 3 out of 12 soil cores investigated and indicate substantial spatial variability at site level (maximum N<sub>2</sub>O emission rate: 180 µg N m<sup>-2</sup> h<sup>-1</sup>). This has implications for site-scale estimates and extrapolation of soil–atmosphere exchange rates.
4. Pulse emissions of varying magnitudes (dependent on the amount of moisture added) were observed for N<sub>2</sub>O, NO and CO<sub>2</sub>, but they were short-lived (24–72 h). Again, three of the cores displayed a different emission pattern with no initial response, but prolonged elevated N<sub>2</sub>O after the first days.
5. We generally found no significant differences in emissions from savanna and pasture sites despite long-term fertilization of the pasture.
6. Major controls on emission levels were soil moisture and temperature for N<sub>2</sub>O and CO<sub>2</sub> emissions, soil temperature and pH for NO (soil moisture effect was not

**BGD**

11, 8399–8442, 2014

### N<sub>2</sub>O, NO, N<sub>2</sub>, and CO<sub>2</sub> emissions from tropical savanna soils and grassland

C. Werner et al.

Title Page

Abstract

Introduction

Conclusions

References

Tables

Figures

◀

▶

◀

▶

Back

Close

Full Screen / Esc

Printer-friendly Version

Interactive Discussion





## N<sub>2</sub>O, NO, N<sub>2</sub>, and CO<sub>2</sub> emissions from tropical savanna soils and grassland

C. Werner et al.

Title Page

Abstract

Introduction

Conclusions

References

Tables

Figures



Back

Close

Full Screen / Esc

Printer-friendly Version

Interactive Discussion



to overcome spatial heterogeneity of soil carbon dioxide and nitrous oxide fluxes, *Soil Biol. Biochem.*, 67, 20–23, doi:10.1016/j.soilbio.2013.08.011, 2013.

Bond, W. J. and Keeley, J. E.: Fire as a global “herbivore”: the ecology and evolution of flammable ecosystems, *Trends Ecol. Evol.*, 20, 387–394, doi:10.1016/j.tree.2005.04.025, 2005.

Breuer, L., Papen, H., and Butterbach-Bahl, K.: N<sub>2</sub>O emission from tropical forest soils of Australia, *J. Geophys. Res.-Atmos.*, 105, 26353–26367, doi:10.1029/2000JD900424, 2000.

Brookes, P. C., Landman, A., Pruden, G., and Jenkinson, D. S.: Chloroform fumigation and the release of soil nitrogen: a rapid direct extraction method to measure microbial biomass nitrogen in soil, *Soil Biol. Biochem.*, 17, 837–842, doi:10.1016/0038-0717(85)90144-0, 1985.

Brümmer, C., Brüggemann, N., Butterbach-Bahl, K., Falk, U., Szarzynski, J., Vielhauer, K., Wassmann, R., and Papen, H.: Soil–atmosphere exchange of N<sub>2</sub>O and NO in near-natural savanna and agricultural land in Burkina Faso (W. Africa), *Ecosystems*, 11, 582–600, doi:10.1007/s10021-008-9144-1, 2008.

Brümmer, C., Papen, H., Wassmann, R., and Brüggemann, N.: Fluxes of CH<sub>4</sub> and CO<sub>2</sub> from soil and termite mounds in south Sudanian savanna of Burkina Faso (West Africa), *Global Biogeochem. Cy.*, 23, , GB1001, doi:10.1029/2008GB003237, 2009a.

Brümmer, C., Papen, H., Wassmann, R., and Brüggemann, N.: Termite mounds as hot spots of nitrous oxide emissions in South-Sudanian savanna of Burkina Faso (West Africa), *Geophys. Res. Lett.*, 36, L09814, doi:10.1029/2009GL037351, 2009b.

Bustamante, M. M. D. C., Medina, E., Asner, G. P., Nardoto, G. B., and Garcia-Montiel, D. C.: Nitrogen cycling in tropical and temperate savannas, *Biogeochemistry*, 79, 209–237, doi:10.1007/s10533-006-9006-x, 2006.

Butterbach-Bahl, K., Gasche, R., Breuer, L., and Papen, H.: Fluxes of NO and N<sub>2</sub>O from temperate forest soils: impact of forest type, N deposition and of liming on the NO and N<sub>2</sub>O emissions, *Nutr. Cycl. Agroecosys.*, 48, 79–90, doi:10.1023/A:1009785521107, 1997.

Butterbach-Bahl, K., Willibald, G., and Papen, H.: Soil core method for direct simultaneous determination of N<sub>2</sub> and N<sub>2</sub>O emissions from forest soils, *Plant Soil*, 240, 105–116, 2002.

Butterbach-Bahl, K., Kesik, M., Miehle, P., Papen, H., and Li, C.: Quantifying the regional source strength of N-trace gases across agricultural and forest ecosystems with process based models, *Plant Soil*, 260, 311–329, doi:10.1023/B:PLSO.0000030186.81212.fb, 2004a.

## N<sub>2</sub>O, NO, N<sub>2</sub>, and CO<sub>2</sub> emissions from tropical savanna soils and grassland

C. Werner et al.

[Title Page](#)
[Abstract](#)
[Introduction](#)
[Conclusions](#)
[References](#)
[Tables](#)
[Figures](#)




[Back](#)
[Close](#)
[Full Screen / Esc](#)
[Printer-friendly Version](#)
[Interactive Discussion](#)


Butterbach-Bahl, K., Kock, M., Willibald, G., Hewett, B., Buhagiar, S., Papen, H., and Kiese, R.: Temporal variations of fluxes of NO, NO<sub>2</sub>, N<sub>2</sub>O, CO<sub>2</sub>, and CH<sub>4</sub> in a tropical rain forest ecosystem, *Global Biogeochem. Cy.*, 18, GB3012, doi:10.1029/2004GB002243, 2004b.

Butterbach-Bahl, K., Baggs, E. M., Dannenmann, M., Kiese, R., and Zechmeister-Boltenstern, S.: Nitrous oxide emissions from soils: how well do we understand the processes and their controls?, *Philos. T. R. Soc. B*, 368, 20130122, doi:10.1098/rstb.2013.0122, 2013.

Castaldi, S., de Pascale, R. A., Grace, J., Nina, N., Montes, R., and José, S. J.: Nitrous oxide and methane fluxes from soils of the Orinoco savanna under different land uses, *Glob. Change Biol.*, 10, 1947–1960, doi:10.1111/j.1365-2486.2004.00871.x, 2004.

Castaldi, S., Ermice, A., and Strumia, S.: Fluxes of N<sub>2</sub>O and CH<sub>4</sub> from soils of savannas and seasonally-dry ecosystems, *J. Biogeogr.*, 33, 401–415, doi:10.1111/j.1365-2699.2005.01447.x, 2006.

Castaldi, S., de Grandcourt, A., Rasile, A., Skiba, U., and Valentini, R.: CO<sub>2</sub>, CH<sub>4</sub> and N<sub>2</sub>O fluxes from soil of a burned grassland in Central Africa, *Biogeosciences*, 7, 3459–3471, doi:10.5194/bg-7-3459-2010, 2010.

Cárdenas, L., Rondón, A., Johansson, C., and Sanhueza, E.: Effects of soil moisture, temperature, and inorganic nitrogen on nitric oxide emissions from acidic tropical savanna soils, *J. Geophys. Res.*, 98, 14783–14790, doi:10.1029/93JD01020, 1993.

Chapuis-Lardy, L., Wrage, N., Metay, A., Chotte, J.-L., and Bernoux, M.: Soils, a sink for N<sub>2</sub>O? A review, *Glob. Change Biol.*, 13, 1–17, doi:10.1111/j.1365-2486.2006.01280.x, 2007.

Conrad, R.: Soil microorganisms as controllers of atmospheric trace Gases (H<sub>2</sub>, CO, CH<sub>4</sub>, OCS, N<sub>2</sub>O, and NO), *Microbiol. Rev.*, 60, 609–640, 1996.

Cook, G. D. and Heerdegen, R. G.: Spatial variation in the duration of the rainy season in monsoonal Australia, *Int. J. Climatol.*, 21, 1723–1732, doi:10.1002/joc.704, 2001.

Dalal, R. C. and Allen, D. E.: Turner review no. 18, greenhouse gas fluxes from natural ecosystems, *Aust. J. Bot.*, 56, 369–407, doi:10.1071/BT07128, 2008.

Dannenmann, M., Gasche, R., Ledebuhr, A., and Papen, H.: Effects of forest management on soil N cycling in beech forests stocking on calcareous soils, *Plant Soil*, 287, 279–300, doi:10.1007/s11104-006-9077-4, 2006.

Dannenmann, M., Butterbach-Bahl, K., Gasche, R., Willibald, G., and Papen, H.: Dinitrogen emissions and the N<sub>2</sub>:N<sub>2</sub>O emission ratio of a Rendzic Leptosol as influenced by pH and forest thinning, *Soil Biol. Biochem.*, 40, 2317–2323, doi:10.1016/j.soilbio.2008.05.009, 2008.

## N<sub>2</sub>O, NO, N<sub>2</sub>, and CO<sub>2</sub> emissions from tropical savanna soils and grassland

C. Werner et al.

[Title Page](#)
[Abstract](#)
[Introduction](#)
[Conclusions](#)
[References](#)
[Tables](#)
[Figures](#)




[Back](#)
[Close](#)
[Full Screen / Esc](#)
[Printer-friendly Version](#)
[Interactive Discussion](#)


- Dannenmann, M., Willibald, G., Sippel, S., and Butterbach-Bahl, K.: Nitrogen dynamics at undisturbed and burned Mediterranean shrublands of Salento Peninsula, Southern Italy, *Plant Soil*, 343, 5–15, doi:10.1007/s11104-010-0541-9, 2011.
- Davidson, E. A.: Fluxes of nitrous oxide and nitric oxide from terrestrial ecosystems, in: *Microbial Production and Consumption of Greenhouse Gases: Methane, Nitrogen Oxides and Halomethanes*, American Society for Microbiology, Washington, 219–235, 1991.
- Davidson, E. A. and Kingerlee, W.: A global inventory of nitric oxide emissions from soils, *Nutr. Cycl. Agroecosys.*, 48, 37–50, doi:10.1023/A:1009738715891, 1997.
- Davidson, E. A., Vitousek, P. M., Matson, P. A., Riley, R. H., García-Méndez, G., and Maass, J. M.: Soil emissions of nitric oxide in a seasonally dry tropical forest of México, *J. Geophys. Res.*, 96, 15439–15445, doi:10.1029/91JD01476, 1991.
- Davidson, E. A., Matson, P. A., Vitousek, P. M., Riley, R. H., Dunkin, K., García-Méndez, G., and Maass, J. M.: Processes regulating soil emissions of NO and N<sub>2</sub>O in a seasonally dry tropical forest, *Ecology*, 74, 130–139, doi:10.2307/1939508, 1993.
- Davidson, E. A., Bustamante, M. M. D. C., and de Siqueira Pinto, A.: Emissions of nitrous oxide and nitric oxide from soils of native and exotic ecosystems of the Amazon and cerrado regions of Brazil, *The Scientific World*, 1, 312–319, doi:10.1100/tsw.2001.261, 2001.
- Davidson, E. A., Verchot, L. V., Cattânio, J. H., Ackerman, I. L., and Carvalho, J. E. M.: Effects of soil water content on soil respiration in forests and cattle pastures of eastern Amazonia, *Biogeochemistry*, 48, 53–69, doi:10.1023/A:1006204113917, 2000.
- Dawes-Gromadzki, T. Z.: Abundance and diversity of termites in a savanna woodland reserve in tropical Australia, *Aust. J. Entomol.*, 47, 307–314, doi:10.1111/j.1440-6055.2008.00662.x, 2008.
- Donoso, L., Santana, R., and Sanhueza, E.: Seasonal-variation of N<sub>2</sub>O fluxes at a tropical savanna site – soil consumption of N<sub>2</sub>O during the dry season, *Geophys. Res. Lett.*, 20, 1379–1382, doi:10.1029/93GL01537, 1993.
- Dwyer, E., Pinnock, S., Gregoire, J., and Pereira, J. M. C.: Global spatial and temporal distribution of vegetation fire as determined from satellite observations, *Int. J. Remote Sens.*, 21, 1289–1302, 2000.
- Eamus, D. and Prior, L. D.: Ecophysiology of trees of seasonally dry tropics: comparisons among phenologies, *Adv. Ecol. Res.*, 32, 113–197, doi:10.1016/S0065-2504(01)32012-3, 2001.

## N<sub>2</sub>O, NO, N<sub>2</sub>, and CO<sub>2</sub> emissions from tropical savanna soils and grassland

C. Werner et al.

[Title Page](#)

[Abstract](#)

[Introduction](#)

[Conclusions](#)

[References](#)

[Tables](#)

[Figures](#)

[⏪](#)

[⏩](#)

[◀](#)

[▶](#)

[Back](#)

[Close](#)

[Full Screen / Esc](#)

[Printer-friendly Version](#)

[Interactive Discussion](#)



- Elliott, L. P., Franklin, D. C., and Bowman, D. M. J. S.: Frequency and season of fires varies with distance from settlement and grass composition in *Eucalyptus miniata* savannas of the Darwin region of northern Australia, *Int. J. Wildland Fire*, 18, 61–70, doi:10.1071/WF06158, 2009.
- 5 Feig, G. T., Mamtimin, B., and Meixner, F. X.: Soil biogenic emissions of nitric oxide from a semi-arid savanna in South Africa, *Biogeosciences*, 5, 1723–1738, doi:10.5194/bg-5-1723-2008, 2008.
- Frost, P., Medina, E., Menaut, J.-C., Solbrig, O. T., Swift, M., and Walker, B.: Responses of savannas to stress and disturbance: a proposal for a collaborative programme of research, IUBS, Paris. 1986.
- 10 Gharahi Ghehi, N., Werner, C., Cizungu Ntaboba, L., Mbonigaba Muhinda, J. J., Van Ranst, E., Butterbach-Bahl, K., Kiese, R., and Boeckx, P.: Spatial variations of nitrogen trace gas emissions from tropical mountain forests in Nyungwe, Rwanda, *Biogeosciences*, 9, 1451–1463, doi:10.5194/bg-9-1451-2012, 2012.
- 15 Granli, T. and Bøckman, O. C.: Nitrous oxide (N<sub>2</sub>O) emissions from soils in warm climates, *Fert. Res.*, 42, 159–163, 1995.
- Groffman, P. M., Altabet, M. A., Böhlke, J. K., Butterbach-Bahl, K., David, M. B., Firestone, M. K., Giblin, A. E., Kana, T. M., Nielsen, L. P., and Voytek, M. A.: Methods for measuring denitrification: diverse approaches to a difficult problem, *Ecol. Appl.*, 16, 2091–2122, doi:10.1890/1051-0761(2006)016[2091:MFMDDA]2.0.CO;2, 2006.
- 20 Grover, S. P. P., Livesley, S. J., Hutley, L. B., Jamali, H., Fest, B., Beringer, J., Butterbach-Bahl, K., and Arndt, S. K.: Land use change and the impact on greenhouse gas exchange in north Australian savanna soils, *Biogeosciences*, 9, 423–437, doi:10.5194/bg-9-423-2012, 2012.
- 25 Grömping, U.: Estimators of relative importance in linear regression based on variance decomposition, *Am. Stat.*, 61, 139–147, doi:10.1198/000313007X188252, 2007.
- Herberich, E., Sikorski, J., and Hothorn, T.: A robust procedure for comparing multiple means under heteroscedasticity in unbalanced designs, *PLOS ONE*, 5, e9788, doi:10.1371/journal.pone.0009788, 2010.
- 30 Hutley, L. B. and Setterfield, S. A.: Savannas, in: *Encyclopedia of Ecology*, vol. 4, Elsevier, Oxford, 3143–3154, 2008.
- Hutley, L. B., Beringer, J., Isaac, P. R., Hacker, J. M., and Cernusak, L. A.: A sub-continental scale living laboratory: spatial patterns of savanna vegetation over a rainfall gradient in north-



## N<sub>2</sub>O, NO, N<sub>2</sub>, and CO<sub>2</sub> emissions from tropical savanna soils and grassland

C. Werner et al.

[Title Page](#)
[Abstract](#)
[Introduction](#)
[Conclusions](#)
[References](#)
[Tables](#)
[Figures](#)




[Back](#)
[Close](#)
[Full Screen / Esc](#)
[Printer-friendly Version](#)
[Interactive Discussion](#)


ern Australia, *Agr. Forest Meteorol.*, 151, 1417–1428, doi:10.1016/j.agrformet.2011.03.002, 2011.

Jones, C. M., Graf, D. R., Bru, D., Philippot, L., and Hallin, S.: The unaccounted yet abundant nitrous oxide-reducing microbial community: a potential nitrous oxide sink, *ISME J.*, 7, 417–426, doi:10.1038/ismej.2012.125, 2013.

Kiese, R., Hewett, B., Graham, A., and Butterbach-Bahl, K.: Seasonal variability of N<sub>2</sub>O emissions and CH<sub>4</sub> uptake by tropical rainforest soils of Queensland, Australia, *Global Biogeochem. Cy.*, 17, 1043, doi:10.1029/2002GB002014, 2003.

Lehmann, C. E. R., Prior, L. D., and Bowman, D. M. J. S.: Decadal dynamics of tree cover in an Australian tropical savanna, *Austral. Ecol.*, 34, 601–612, doi:10.1111/j.1442-9993.2009.01964.x, 2009.

Levine, J. S., Winstead, E. L., Parsons, D. A. B., Scholes, M. C., Scholes, R. J., Cofer III, W. R., Cahoon, D. R., and Sebacher, D.: Biogenic soil emissions of nitric oxide (NO) and nitrous oxide (N<sub>2</sub>O) from savannas in South Africa: the impact of wetting and burning, *J. Geophys. Res.-Atmos.*, 101, 23689–23697, doi:10.1029/96JD01661, 1996.

Linn, D. N. and Doran, J. W.: Effect of water-filled pore space on carbon dioxide and nitrous oxide production in tilled and nontilled soils, *Soil Sci. Soc. Am. J.*, 48, 1267–1272, 1984.

Livesley, S. J., Grover, S. P. P., Hutley, L. B., Jamali, H., Butterbach-Bahl, K., Fest, B., Beringer, J., and Arndt, S. K.: Seasonal variation and fire effects on CH<sub>4</sub>, N<sub>2</sub>O and CO<sub>2</sub> exchange in savanna soils of northern Australia, *Agr. Forest Meteorol.*, 151, 1440–1452, doi:10.1016/j.agrformet.2011.02.001, 2011.

Lonsdale, W. M.: Inviting trouble: introduced pasture species in northern Australia, *Aust. J. Ecol.*, 19, 345–354, doi:10.1111/j.1442-9993.1994.tb00498.x, 1994.

Ludwig, J., Meixner, F. X., Vogel, B., and Forstner, J.: Soil–air exchange of nitric oxide: an overview of processes, environmental factors, and modeling studies, *Biogeochemistry*, 52, 225–257, doi:10.1023/A:1006424330555, 2001.

Meixner, F. X., Fickinger, T., Marufu, L., Serça, D., Nathaus, F. J., Makina, E., Mukurumbira, L., and Andreae, M. O.: Preliminary results on nitric oxide emission from a southern African savanna ecosystem, *Nutr. Cycl. Agroecosys.*, 48, 123–138, doi:10.1023/A:1009765510538, 1997.

Morris, S. G., Kimber, S. W. L., Grace, P., and Van Zwieten, L.: Improving the statistical preparation for measuring soil N<sub>2</sub>O flux by closed chamber, *Sci. Total Environ.*, 465, 166–172, doi:10.1016/j.scitotenv.2013.02.032, 2013.



## N<sub>2</sub>O, NO, N<sub>2</sub>, and CO<sub>2</sub> emissions from tropical savanna soils and grassland

C. Werner et al.

Title Page

Abstract

Introduction

Conclusions

References

Tables

Figures

⏪

⏩

◀

▶

Back

Close

Full Screen / Esc

Printer-friendly Version

Interactive Discussion



- Otter, L. B., Yang, W. X., Scholes, M. C., and Meixner, F. X.: Nitric oxide emissions from a southern African savanna, *J. Geophys. Res.*, 104, 18471–18485, doi:10.1029/1999JD900148, 1999.
- Papen, H. and Butterbach-Bahl, K.: A 3-year continuous record of nitrogen trace gas fluxes from untreated and limed soil of a N-saturated spruce and beech forest ecosystem in Germany – 1. N<sub>2</sub>O emissions, *J. Geophys. Res.-Atmos.*, 104, 18487–18503, 1999.
- Parsons, D., Scholes, M. C., Scholes, R. J., and Levine, J. S.: Biogenic NO emissions from savanna soils as a function of fire regime, soil type, soil nitrogen, and water status, *J. Geophys. Res.*, 101, 23683–23688, 1996.
- Passianoto, C. C., Ahrens, T., Feigl, B. J., Steudler, P. A., Melillo, J. M., and do Carmo, J. B.: Diurnal changes in nitric oxide emissions from conventional tillage and pasture sites in the Amazon Basin: influence of soil temperature, *Plant Soil*, 258, 21–29, doi:10.1023/B:PLSO.0000016500.47714.30, 2004.
- Pinto, A. de S., Bustamante, M. M. D. C., Kisselle, K. W., Burke, R. A., Zepp, R. G., Viana, L. T., Varella, R. F., and Molina, M.: Soil emissions of N<sub>2</sub>O, NO, and CO<sub>2</sub> in Brazilian Savannas: effects of vegetation type, seasonality, and prescribed fires, *J. Geophys. Res.-Atmos.*, 107, 57-1–57-9, doi:10.1029/2001JD000342, 2002.
- Poth, M., Anderson, I. C., Miranda, H. S., Miranda, A. C., and Riggan, P. J.: The magnitude and persistence of soil NO, N<sub>2</sub>O, CH<sub>4</sub>, and CO<sub>2</sub> fluxes from burned tropical savanna in Brazil, *Global Biogeochem. Cy.*, 9, 503–513, doi:10.1029/95GB02086, 1995.
- R Development Core Team: R: a language and environment for statistical computing, R Foundation for Statistical Computing, Vienna, Austria, available at: <http://www.R-project.org>, 2011.
- Raich, J. W. and Schlesinger, W. H.: The global carbon dioxide flux in soil respiration and its relationship to vegetation and climate, *Tellus B*, 44, 81–99, doi:10.1034/j.1600-0889.1992.t01-1-00001.x, 1992.
- Rees, R. M., Wuta, M., Furley, P. A., and Li, C.: Nitrous oxide fluxes from savanna (miombo) woodlands in Zimbabwe, *J. Biogeogr.*, 33, 424–437, doi:10.1111/j.1365-2699.2005.01423.x, 2006.
- Rondón, A., Johansson, C., and Sanhueza, E.: Emission of nitric oxide from soils and termite nests in a trachypogon savanna of the Orinoco Basin, *J. Atmos. Chem.*, 17, 293–306, doi:10.1007/BF00694402, 1993.

## N<sub>2</sub>O, NO, N<sub>2</sub>, and CO<sub>2</sub> emissions from tropical savanna soils and grassland

C. Werner et al.

[Title Page](#)

[Abstract](#)

[Introduction](#)

[Conclusions](#)

[References](#)

[Tables](#)

[Figures](#)

[⏪](#)

[⏩](#)

[◀](#)

[▶](#)

[Back](#)

[Close](#)

[Full Screen / Esc](#)

[Printer-friendly Version](#)

[Interactive Discussion](#)



- Rosenkranz, P., Brüggemann, N., Papen, H., Xu, Z., Seufert, G., and Butterbach-Bahl, K.: N<sub>2</sub>O, NO and CH<sub>4</sub> exchange, and microbial N turnover over a Mediterranean pine forest soil, *Biogeosciences*, 3, 121–133, doi:10.5194/bg-3-121-2006, 2006.
- Russell-Smith, J. and Yates, C. P.: Australian savanna fire regimes: context, scales, patchiness, *Fire Ecology*, 3, 48–63, 2007.
- Russell-Smith, J., Yates, C. P., Whitehead, P. J., Smith, R., Craig, R., Allan, G. E., Thackway, R., Frakes, I., Cridland, S., Meyer, C. P. M., and Gill, A. M.: Bushfires “down under”: patterns and implications of contemporary Australian landscape burning, *Int. J. Wildland Fire*, 16, 361–377, doi:10.1071/WF07018, 2007.
- Sanford, R. A., Wagner, D. D., Wu, Q., Chee-Sanford, J. C., Thomas, S. H., Cruz-García, C., Rodriguez, G., Massol-Deya, A., Krishnani, K. K., Ritalahti, K. M., Nissen, S., Konstantinidis, K. T., and Löffler, F. E.: Unexpected nondenitrifier nitrous oxide reductase gene diversity and abundance in soils, *P. Natl. Acad. Sci. USA*, 109, 19709–19714, doi:10.1073/pnas.1211238109, 2012.
- Sanhueza, E., Hao, W. M., Scharffe, D. H., Donoso, L., and Crutzen, P. J.: N<sub>2</sub>O and NO emissions from soils of the northern part of the Guayana shield, Venezuela, *J. Geophys. Res.*, 95, 22481–22488, doi:10.1029/JD095iD13p22481, 1990.
- Scholes, M. C., Martin, R., Scholes, R. J., Parsons, D., and Winstead, E. L.: NO and N<sub>2</sub>O emissions from savanna soils following the first simulated rains of the season, *Nutr. Cycl. Agroecosys.*, 48, 115–122, doi:10.1023/A:1009781420199, 1997.
- Scholes, R. J. and Hall, D. O.: The carbon budget of tropical savannas, woodlands and grasslands, in: *Global Change: Effects on Coniferous Forests and Grassland*, John Wiley & Sons Ltd, New York, 69–100, 1996.
- Serça, D., Delmas, R., Le Roux, X., Parsons, D. A. B., Scholes, M. C., Abbadie, L., Lensi, R., Ronce, O., and Labroue, L.: Comparison of nitrogen monoxide emissions from several African tropical ecosystems and influence of season and fire, *Global Biogeochem. Cy.*, 12, 637–651, doi:10.1029/98GB02737, 1998.
- Smith, K. A., Clayton, H., McTaggart, I. P., Thomson, P. E., Arah, J. R. M., Scott, A., Goulding, K. W. T., Monteith, J. L., and Phillips, V. R.: The measurement of nitrous oxide emissions from soil by using chambers, *Philos. T. R. Soc. A*, 351, 327–338, doi:10.2307/54419, 1995.
- Spiro, S.: Nitrous oxide production and consumption: regulation of gene expression by gas-sensitive transcription factors, *Philos. T. R. Soc. B*, 367, 1213–1225, doi:10.1098/rstb.2011.0309, 2012.

## N<sub>2</sub>O, NO, N<sub>2</sub>, and CO<sub>2</sub> emissions from tropical savanna soils and grassland

C. Werner et al.

Title Page

Abstract

Introduction

Conclusions

References

Tables

Figures

⏪

⏩

◀

▶

Back

Close

Full Screen / Esc

Printer-friendly Version

Interactive Discussion

- Stehfest, E. and Bouwman, A. F.: N<sub>2</sub>O and NO emission from agricultural fields and soils under natural vegetation: summarizing available measurement data and modeling of global annual emissions, *Nutr. Cycl. Agroecosys.*, 74, 207–228, doi:10.1007/s10705-006-9000-7, 2006.
- Steinkamp, J. and Lawrence, M. G.: Improvement and evaluation of simulated global biogenic soil NO emissions in an AC-GCM, *Atmos. Chem. Phys.*, 11, 6063–6082, doi:10.5194/acp-11-6063-2011, 2011.
- Weitz, A. M., Veldkamp, E., Keller, M., Neff, J., and Crill, P. M.: Nitrous oxide, nitric oxide, and methane fluxes from soils following clearing and burning of tropical secondary forest, *J. Geophys. Res.-Atmos.*, 103, 28047–28058, doi:10.1029/98JD02144, 1998.
- Werner, C., Zheng, X., Tang, J., Xie, B., Liu, C., Kiese, R., and Butterbach-Bahl, K.: N<sub>2</sub>O, CH<sub>4</sub> and CO<sub>2</sub> emissions from seasonal tropical rainforests and a rubber plantation in Southwest China, *Plant Soil*, 289, 335–353, doi:10.1007/s11104-006-9143-y, 2006.
- Werner, C., Butterbach-Bahl, K., Haas, E., Hickler, T., and Kiese, R.: A global inventory of N<sub>2</sub>O emissions from tropical rainforest soils using a detailed biogeochemical model, *Global Biogeochem. Cy.*, 21, GB3010, doi:10.1029/2006GB002909, 2007a.
- Werner, C., Kiese, R., and Butterbach-Bahl, K.: Soil–atmosphere exchange of N<sub>2</sub>O, CH<sub>4</sub>, and CO<sub>2</sub> and controlling environmental factors for tropical rain forest sites in western Kenya, *J. Geophys. Res.*, 112, D03308, doi:10.1029/2006JD007388, 2007b.
- Williams, R. J., Carter, J. O., Duff, G. A., Woinarski, J. C. Z., Cook, G. D., and Farrer, S. L.: Carbon accounting, land management, science and policy uncertainty in Australian savanna landscapes: introduction and overview, *Aust. J. Bot.*, 53, 583–588, doi:10.1071/BT05181, 2005.
- Yamulki, S., Harrison, R. M., Goulding, K. W. T., and Webster, C. P.: N<sub>2</sub>O, NO and NO<sub>2</sub> fluxes from a grassland: effect of soil pH, *Soil. Biol. Biochem.*, 29, 1199–1208, doi:10.1016/S0038-0717(97)00032-1, 1997.
- Yan, X., Ohara, T., and Akimoto, H.: Statistical modeling of global soil NO<sub>x</sub> emissions, *Global Biogeochem. Cy.*, 19, GB3019, doi:10.1029/2004GB002276, 2005.
- Yienger, J. J. and Levy II, H.: Empirical model of global soil–biogenic NO<sub>x</sub> emissions, *J. Geophys. Res.*, 100, 11447–11464, doi:10.1029/95JD00370, 1995.

## N<sub>2</sub>O, NO, N<sub>2</sub>, and CO<sub>2</sub> emissions from tropical savanna soils and grassland

C. Werner et al.

**Table 1.** Physico-chemical properties of the sampled soil and mean microbial biomass (sampling depth 0–15 cm, \*  $\mu\text{g C/N g [dry weight] soil}^{-1}$ ).

Land use	Pos.	Soil texture (%)			Density ( $\text{g cm}^{-3}$ )	Org. C (%)	Total N (%)	pH	Microbial biomass (*)		NH <sub>4</sub> <sup>+</sup> (*)	NO <sub>3</sub> <sup>-</sup> (*)
		Sand	Silt	Clay					C	N		
Natural savanna	T1 P1	81	12	7	1.4	2.8	0.1	5.0	80.9	12.2	2.8	0.1
	T1 P3	87	8	5	1.5	0.8	0.04	4.4	87.1	8.2	0.8	0.04
Pasture	T1 P5	87	10	3	1.7	0.7	0.05	5.1	87.4	10.1	0.7	0.05
	T3 P1	68	17	15	1.5	1.5	0.1	4.6	67.7	16.7	1.5	0.1

Title Page

Abstract

Introduction

Conclusions

References

Tables

Figures

I ◀

▶ I

◀

▶

Back

Close

Full Screen / Esc

Printer-friendly Version

Interactive Discussion



**Table 2.** Average CO<sub>2</sub>, N<sub>2</sub>O, NO, and N<sub>2</sub> emission at different moisture and temperature incubation settings (fluxes reported post-pulse, <sup>a</sup> value excl. outliers/brackets incl. outliers, <sup>b</sup> N<sub>2</sub>: T1 *n* = 3, T3: no replicates).

	WFPS [%]			Transect	
	25	50	75		
carbon dioxide (mg CO <sub>2</sub> -C m <sup>-2</sup> h <sup>-1</sup> )					
Temperature [°C]	20	19.7 ± 6.8	21.5 ± 5.6	33.3 ± 18.7	T1
		17.6 ± 5.0	28.1 ± 8.7	45.1 ± 15.9	T3
	30	32.0 ± 15.9	25.4 ± 15.5	66.1 ± 20.2	T1
		38.8 ± 14.4	18.6 ± 8.7	31.3 ± 18.3	T3
	40		53.6 ± 26.0	75.8 ± 30.3	T1
			31.6 ± 10.8	38.4 ± 12.4	T3
nitrous oxide (µg N <sub>2</sub> O-N m <sup>-2</sup> h <sup>-1</sup> ) <sup>a</sup>					
Temperature [°C]	20	0.3 ± 0.4	0.5 ± 0.6	3.6 ± 7.2 (13.7 ± 29.0)	T1
		0.3 ± 0.3	0.5 ± 0.7	1.1 ± 1.4	T3
	30	0.6 ± 0.4	1.5 ± 2.4	3.1 ± 1.2 (9.6 ± 12.4)	T1
		0.4 ± 0.2	1.9 ± 2.3	8.2 ± 10.2	T3
	40		5.4 ± 4.8	13.7 ± 9.4 (19.6 ± 15.3)	T1
			4.1 ± 4.4	17.1 ± 14.5	T3
nitric oxide (µg NO-N m <sup>-2</sup> h <sup>-1</sup> )					
Temperature [°C]	20	6.4 ± 2.4	4.9 ± 2.1	3.4 ± 2.6	T1
		3.6 ± 1.7	4.2 ± 1.7	1.7 ± 1.1	T3
	30	9.1 ± 4.8	6.1 ± 3.1	3.5 ± 2.4	T1
		3.2 ± 1.5	8.4 ± 9.0	9.5 ± 8.2	T3
	40		65.0 ± 97.8	13.2 ± 15	T1
			12.9 ± 11.0	6.1 ± 6.7	T3
dinitrogen (µg N <sub>2</sub> -N m <sup>-2</sup> h <sup>-1</sup> ) <sup>b</sup>					
Temperature [°C]	20	107.6 ± 82.8	65.3 ± 26.5	1041.1 ± 255.8	T1
		400.6	110.1	1281.2	T3
	30	45.4 ± 33.2	56 ± 13	627.4 ± 789.1	T1
		311.3	118.9	348.3	T3
	40		79.9 ± 11.5	1201 ± 1625	T1
			207.0	614.4	T3

## N<sub>2</sub>O, NO, N<sub>2</sub>, and CO<sub>2</sub> emissions from tropical savanna soils and grassland

C. Werner et al.

[Title Page](#)[Abstract](#)[Introduction](#)[Conclusions](#)[References](#)[Tables](#)[Figures](#)[Back](#)[Close](#)[Full Screen / Esc](#)[Printer-friendly Version](#)[Interactive Discussion](#)

**Table 3.** Fractional contribution of N<sub>2</sub>O, NO and N<sub>2</sub> to total gaseous N losses of savanna soil at T1 (units: % of total gaseous N loss; N<sub>2</sub>O : NO : N<sub>2</sub>; <sup>a</sup> value excl. outliers/brackets incl. outliers).

		WFPS [%]		
		25	50	75 <sup>a</sup>
Temp. [°C]	20	0.3 : 5.6 : 94.1	0.7 : 6.9 : 92.4	0.3 : 0.3 : 99.3 (1.7 : 0.3 : 98)
	30	1.1 : 16.5 : 82.4	2.4 : 9.6 : 88.1	0.5 : 0.6 : 99.0 (1.6 : 0.5 : 97.9)
	40		3.6 : 43.2 : 53.2	1.1 : 1.1 : 97.8 (1.7 : 1.1 : 97.3)

## BGD

11, 8399–8442, 2014

### N<sub>2</sub>O, NO, N<sub>2</sub>, and CO<sub>2</sub> emissions from tropical savanna soils and grassland

C. Werner et al.

[Title Page](#)

[Abstract](#)

[Introduction](#)

[Conclusions](#)

[References](#)

[Tables](#)

[Figures](#)



[Back](#)

[Close](#)

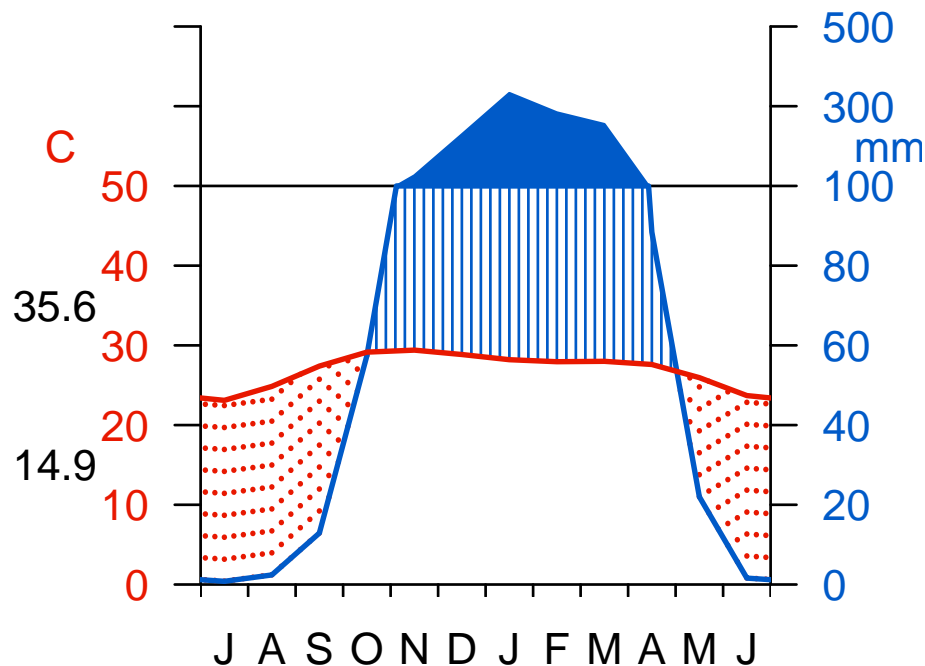
[Full Screen / Esc](#)

[Printer-friendly Version](#)

[Interactive Discussion](#)



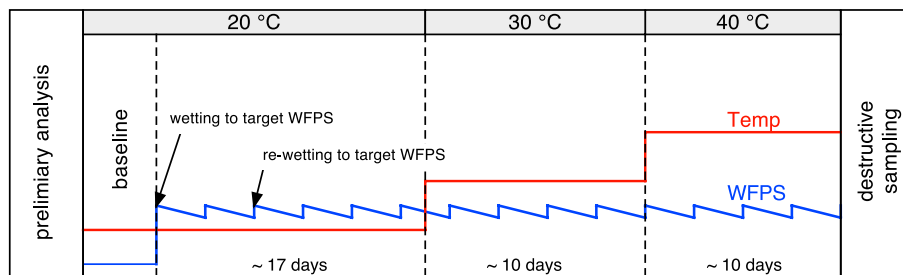
Middle Point, NT, Australia (10 m)  
1981–2010 27C 1411 mm



**Figure 1.** Climatic conditions at sampling sites (data: Bureau of Meteorology, Australia, <http://www.bom.gov.au>, years 1981–2010).

## N<sub>2</sub>O, NO, N<sub>2</sub>, and CO<sub>2</sub> emissions from tropical savanna soils and grassland

C. Werner et al.



**Figure 2.** Schematic of the incubation setup. The soil moisture level of the cores was kept constant by readding water every second day, the temperature was raised stepwise from 20 °C, to 30 °C, and finally 40 °C. The incubation outlined in this figure was performed three times for separate soil cores (once for each of the three soil moisture levels; WFPS: water filled pore space).

Title Page

Abstract

Introduction

Conclusions

References

Tables

Figures

⏪

⏩

◀

▶

Back

Close

Full Screen / Esc

Printer-friendly Version

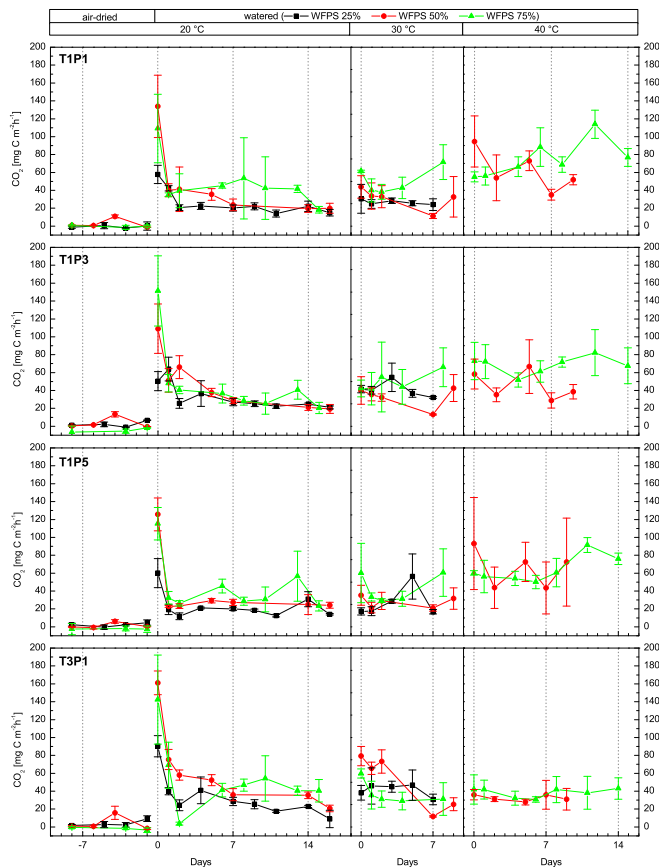
Interactive Discussion





## N<sub>2</sub>O, NO, N<sub>2</sub>, and CO<sub>2</sub> emissions from tropical savanna soils and grassland

C. Werner et al.

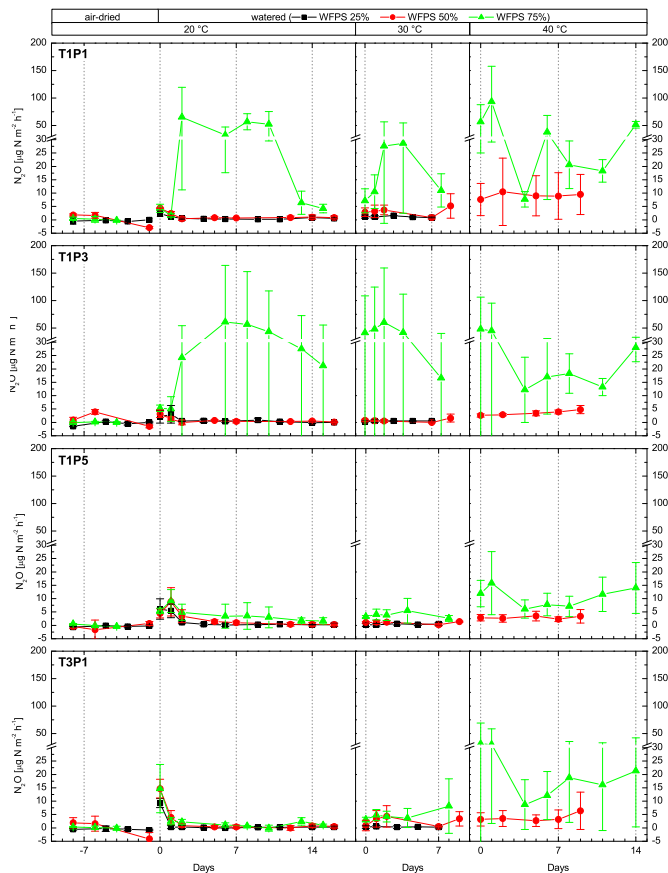


**Figure 3.** Average CO<sub>2</sub> emission per site (savanna: T1P1, T1P3, T1P5, grassland: T3P1) for three soil moisture (black: 25 % water filled pore space (WFPS), red: 50 % WFPS, green 75 % WFPS) and three temperature levels (x-axis: days since incubation change/negative values indicate pre-incubation period).

[Title Page](#)
[Abstract](#)
[Introduction](#)
[Conclusions](#)
[References](#)
[Tables](#)
[Figures](#)
[Back](#)
[Close](#)
[Full Screen / Esc](#)
[Printer-friendly Version](#)
[Interactive Discussion](#)


## N<sub>2</sub>O, NO, N<sub>2</sub>, and CO<sub>2</sub> emissions from tropical savanna soils and grassland

C. Werner et al.

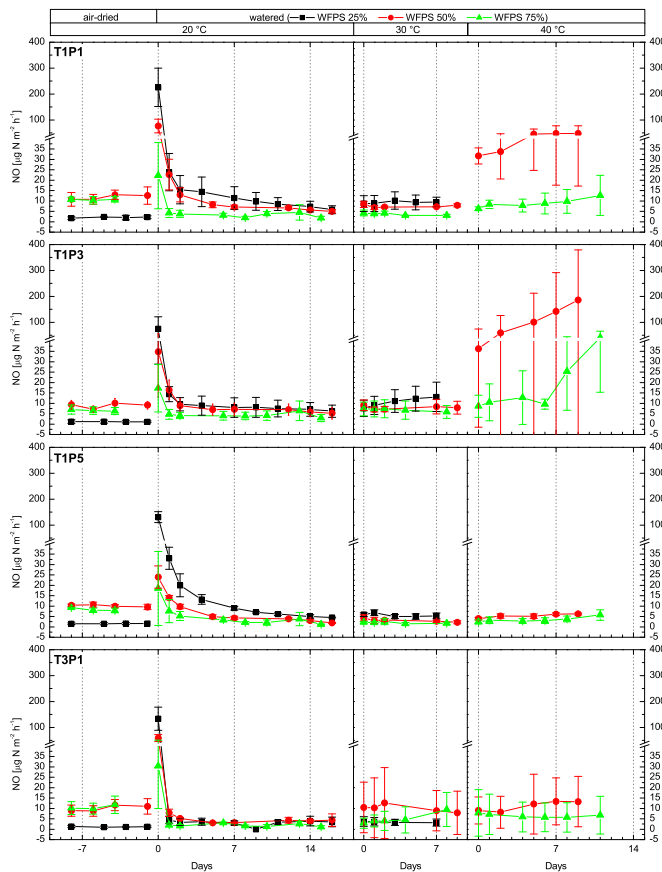


**Figure 4.** Average N<sub>2</sub>O emission per site (savanna: T1P1, T1P3, T1P5, grassland: T3P1) for three soil moisture (black: 25 % water filled pore space (WFPS), red: 50 % WFPS, green 75 % WFPS) and three temperature levels (x-axis: days since incubation change/negative values indicate pre-incubation period).

[Title Page](#)
[Abstract](#)
[Introduction](#)
[Conclusions](#)
[References](#)
[Tables](#)
[Figures](#)
[◀](#)
[▶](#)
[◀](#)
[▶](#)
[Back](#)
[Close](#)
[Full Screen / Esc](#)
[Printer-friendly Version](#)
[Interactive Discussion](#)

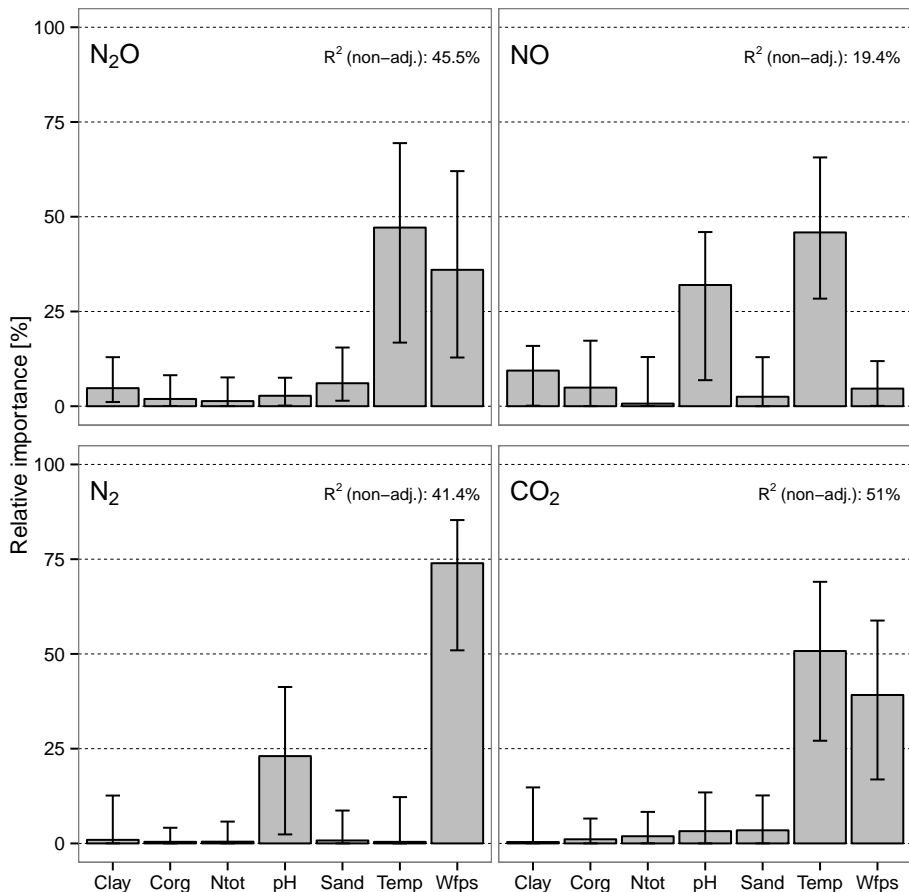

## N<sub>2</sub>O, NO, N<sub>2</sub>, and CO<sub>2</sub> emissions from tropical savanna soils and grassland

C. Werner et al.



**Figure 5.** Average NO emission per site (savanna: T1P1, T1P3, T1P5, grassland: T3P1) for three soil moisture (black: 25 % water filled pore space (WFPS), red: 50 % WFPS, green 75 % WFPS) and three temperature levels (x-axis: days since incubation change/negative values indicate pre-incubation period).

[Title Page](#)
[Abstract](#)
[Introduction](#)
[Conclusions](#)
[References](#)
[Tables](#)
[Figures](#)
[Back](#)
[Close](#)
[Full Screen / Esc](#)
[Printer-friendly Version](#)
[Interactive Discussion](#)



**Figure 6.** Relative importance of environmental factors clay, organic carbon (Corg), total nitrogen (Ntot), sand, temperature and water filled pore space (Wfps) on N<sub>2</sub>O, NO, N<sub>2</sub> and CO<sub>2</sub> emissions (based on proportional marginal variance decomposition,  $R^2$  values give total predictability of each model).