



A decadal time series of water vapor and D / H isotope ratios above Zugspitze: transport patterns to central Europe

Petra Hausmann¹, Ralf Sussmann¹, Thomas Trickl¹, and Matthias Schneider²

¹Karlsruhe Institute of Technology, IMK-IFU, Garmisch-Partenkirchen, Germany

²Karlsruhe Institute of Technology, IMK-ASF, Karlsruhe, Germany

Correspondence to: Ralf Sussmann (ralf.sussmann@kit.edu)

Received: 18 November 2016 – Discussion started: 12 January 2017

Revised: 8 May 2017 – Accepted: 23 May 2017 – Published: 23 June 2017

Abstract. We present vertical soundings (2005–2015) of tropospheric water vapor (H_2O) and its D / H isotope ratio (δD) derived from ground-based solar Fourier transform infrared (FTIR) measurements at Zugspitze (47°N , 11°E , 2964 m a.s.l.). Beside water vapor profiles with optimized vertical resolution (degrees of freedom for signal, DOFS, = 2.8), $\{\text{H}_2\text{O}, \delta\text{D}\}$ pairs with consistent vertical resolution (DOFS = 1.6 for H_2O and δD) applied in this study. The integrated water vapor (IWV) trend of 2.4 [−5.8, 10.6] % decade^{−1} is statistically insignificant (95 % confidence interval). Under this caveat, the IWV trend estimate is conditionally consistent with the 2005–2015 temperature increase at Zugspitze (1.3 [0.5, 2.1] K decade^{−1}), assuming constant relative humidity. Seasonal variations in free-tropospheric H_2O and δD exhibit amplitudes of 140 and 50 % of the respective overall means. The minima (maxima) in January (July) are in agreement with changing sea surface temperature of the Atlantic Ocean.

Using extensive backward-trajectory analysis, distinct moisture pathways are identified depending on observed δD levels: low column-based δD values ($\delta\text{D}_{\text{col}} < 5\text{th}$ percentile) are associated with air masses originating at higher latitudes (62°N on average) and altitudes (6.5 km) than high δD values ($\delta\text{D}_{\text{col}} > 95\text{th}$ percentile: 46°N , 4.6 km). Backward-trajectory classification indicates that $\{\text{H}_2\text{O}, \delta\text{D}\}$ observations are influenced by three long-range-transport patterns towards Zugspitze assessed in previous studies: (i) intercontinental transport from North America (TUS; source region: 25 – 45°N , 70 – 110°W , 0–2 km altitude), (ii) intercontinental transport from northern Africa (TNA; source region: 15 – 30°N , 15°W – 35°E , 0–2 km altitude), and (iii) stratospheric air intrusions (STIs; source region: $>20^\circ\text{N}$,

above zonal mean tropopause). The FTIR data exhibit significantly differing signatures in free-tropospheric $\{\text{H}_2\text{O}, \delta\text{D}\}$ pairs (5 km a.s.l.) – given as the mean with uncertainty of ± 2 standard error (SE) – for TUS ($\text{VMR}_{\text{H}_2\text{O}} = 2.4$ [2.3, 2.6] $\times 10^3$ ppmv, $\delta\text{D} = -315$ [−326, −303] ‰), TNA (2.8 [2.6, 2.9] $\times 10^3$ ppmv, -251 [−257, −246] ‰), and STIs (1.2 [1.1, 1.3] $\times 10^3$ ppmv, -384 [−397, −372] ‰). For TUS events, $\{\text{H}_2\text{O}, \delta\text{D}\}$ observations depend on surface temperature in the source region and the degree of dehydration having occurred during updraft in warm conveyor belts. During TNA events (dry convection of boundary layer air) relatively moist and weakly HDO-depleted air masses are imported. In contrast, STI events are associated with import of predominantly dry and HDO-depleted air masses.

These long-range-transport patterns potentially involve the import of various trace constituents to the central European free troposphere, i.e., import of pollution from North America (e.g., aerosol, ozone, carbon monoxide), Saharan mineral dust, stratospheric ozone, and other airborne species such as pollen. Our results provide evidence that $\{\text{H}_2\text{O}, \delta\text{D}\}$ observations are a valuable proxy for the transport of such tracers. To validate this finding, we consult a database of transport events (TNA and STI) covering 2013–2015 deduced by data filtering from in situ measurements at Zugspitze and lidar profiles at nearby Garmisch. Indeed, the FTIR data related to these verified TNA events (27 days) exhibit characteristic fingerprints in IWV (5.5 [4.9, 6.1] mm) and $\delta\text{D}_{\text{col}}$ (−266 [−284, −247] ‰), which are significantly distinguishable from the rest of the time series (4.3 [4.1, 4.5] mm, −316 [−324, −308] ‰). This holds true for 136 STI days considering uncertainties of ± 1 SE (4.2 [4.0, 4.3] mm, −322 [−327, −316] ‰) with respect to the remainder (4.6 [4.5,

4.8] mm, -302 [-307 , -297]‰). Furthermore, deep stratospheric intrusions to the Zugspitze summit (in situ humidity and beryllium-7 data filtering) show a significantly lower mean value (-334 [-337 , -330]‰) of lower-tropospheric δD (3–5 km a.s.l.) than the rest of the 2005–2015 time series (-284 [-286 , -282]‰) considering uncertainty of ± 2 SE. Our results show that consistent $\{H_2O, \delta D\}$ observations at Zugspitze can serve as an operational indicator for long-range-transport events potentially affecting regional climate and air quality, as well as human health in central Europe.

1 Introduction

Water vapor (H_2O) is of fundamental importance in the climate system of our Earth. As the dominant greenhouse gas it accounts for about 60 % of the natural greenhouse effect (Kiehl and Trenberth, 1997; Harries et al., 2008). The Earth's energy budget is closely linked to the global water cycle, which effectively redistributes energy by latent heat transport (Stephens et al., 2012; Wild et al., 2013). However, relevant processes determining the interaction between atmospheric humidity, circulation, and climate are still not completely understood (e.g., cloud feedback processes). A major remaining challenge in climate modeling is accurately representing the response of the hydrological cycle and general circulation patterns to climate change (Bengtsson et al., 2014; Bony et al., 2015).

Large-scale circulation patterns at the northern midlatitudes are dominated by prevailing westerly winds. Extratropical cyclones and deep convective systems facilitate transport of water vapor from moisture sources to higher altitudes and latitudes. Along these major transport pathways, other trace gas signatures and pollution plumes can travel over long distances from source to receptor regions (e.g., Stohl, 2001; Stohl et al., 2002). Transported species of predominantly natural origin include, among others, volcanic ash (e.g., Trickl et al., 2013), biomass burning aerosols (e.g., Forster et al., 2001; Wotawa et al., 2001; Damoah et al., 2004; Fromm et al., 2010; Trickl et al., 2015), pollen (e.g., Jochner et al., 2015), mineral dust (e.g., Husar, 2004; Papayannis et al., 2008; Trickl et al., 2011; Israelevich et al., 2012), and stratospheric ozone (e.g., Beekmann et al., 1997; Škerlak et al., 2014). Relevant anthropogenic tracers are, e.g., aerosols, carbon monoxide, ozone, and ozone precursors. Such transport events impact climate, air quality, and human health in receptor regions and are highly relevant for agreements on emission regulations (Holloway et al., 2003; TF-HTAP, 2010).

Research on long-range transport to central Europe has a long history at high-altitude observatories, such as Zugspitze and Jungfraujoch, which offer a unique opportunity to monitor free-tropospheric conditions. Transport studies using lidar and in situ measurements combined with transport modeling have previously identified three main long-range-transport

patterns to central Europe. First, intercontinental transport from North America effectively carries anthropogenic emissions within 3–10 days to the European middle troposphere after lifting by warm conveyor belts (WCBs; Stohl and Trickl, 1999; Trickl et al., 2003). Second, intercontinental transport from northern Africa imports Saharan mineral dust into Europe in 5–15 events per year (Papayannis et al., 2008; Flentje et al., 2015). Third, stratosphere–troposphere transport injects dry, ozone-rich air into the European troposphere typically after descending 3–15 days from the lowermost stratosphere (Stohl et al., 2003; Trickl et al., 2010, 2014, 2015, 2016).

Valuable information on tropospheric moisture pathways (and associated transport of other tracers) is provided by measurements of water vapor and its isotopes (Strong et al., 2007; González et al., 2016; Schneider et al., 2016). In this context, two stable water vapor isotopes are of particular interest: H_2O ($^1H_2^{16}O$) and HDO ($^1H^2H^{16}O$) with an average abundance of 99.7 and 0.03 %, respectively. Variations in the D/H ratio of water vapor are expressed in terms of δD , i.e., as relative deviation from a reference HDO/ H_2O ratio standard (Craig, 1961; see Sect. 2). The isotopic composition of atmospheric water vapor is modified during phase transitions (evaporation, condensation, and sublimation) due to fractionation processes caused by isotopic mass differences (Dansgaard, 1964). After evaporation from the ocean surfaces, which represents the main source of water vapor, air masses are transported to regions of lower temperatures, where condensation or sublimation leads to dehydration and depletion in the heavier isotope HDO. Resulting large-scale isotope effects (Worden et al., 2007; Sutanto et al., 2015) include increasing depletion in HDO (decreasing δD) with higher latitudes (latitude effect), with higher altitudes (altitude effect), and with increasing distance from oceans (continental effect).

Only recently have tropospheric water vapor isotope data sets become available from satellite remote-sensing instruments (e.g., Worden et al., 2006; Schneider and Hase, 2011; Lacour et al., 2012; Boesch et al., 2013; Frankenberg et al., 2013; Sutanto et al., 2015) and from ground-based Fourier transform infrared (FTIR) spectrometers (Barthlott et al., 2017; Schneider et al., 2016) operated within the Network for the Detection of Atmospheric Composition Change (NDACC; www.ndacc.org). Progress achieved within the project MUSICA (MUlti-platform remote Sensing of Isotopologues for investigating the Cycle of Atmospheric water; Schneider et al., 2012) now offers retrieval methods for tropospheric H_2O and δD profiles from mid-infrared FTIR measurements.

So far, research on long-range transport to central Europe has mainly been based on investigations or field campaigns of special transport events combining observations of conventional tracers (such as ozone, aerosols, and humidity) at few sites. With the advance of water vapor isotope remote sensing, a promising new transport tracer (i.e., con-

sistent $\{H_2O, \delta D\}$ pairs) has become available for globally distributed operational FTIR sites. This data set can be exploited to gain a more comprehensive picture of atmospheric moisture transport. These transport processes can be associated with the dispersion of anthropogenic (or natural) emissions, which is of particular interest for emission regulation policies and human health issues (e.g., air pollution, pollen distribution). Additionally, analysis of $\{H_2O, \delta D\}$ pairs will yield further insight into the coupling of the hydrological cycle with general circulation patterns, urgently needed to improve our understanding of climate change.

The goal of this study is to evaluate new possibilities in transport research provided by long-term observations of consistent $\{H_2O, \delta D\}$ pairs at an FTIR site which is representative of typical midlatitude conditions. We present an update of the water vapor time series obtained at Zugspitze (Sussmann et al., 2009) including water vapor isotope information. Based on this data set, transport pathways to the central European free troposphere are identified using backward-trajectory analysis. The main task is to identify distinct signatures in $\{H_2O, \delta D\}$ pairs for long-range-transport patterns and to combine the results with conventional transport tracer observations. This paper is structured as follows: Section 2 describes FTIR measurements and the retrieval of water vapor and its isotopes. The resulting long-term $\{H_2O, \delta D\}$ time series at Zugspitze is presented in Sect. 3 along with a discussion on trends and seasonal cycles. Section 4.1 gives results on moisture pathways to central Europe related to δD outliers. $\{H_2O, \delta D\}$ signatures of long-range-transport events are identified using trajectory classification (Sect. 4.2) and analysis of lidar and in situ measurements (Sect. 4.3). Finally, Sect. 5 summarizes results and draws final conclusions.

2 FTIR observations and retrieval strategy

The long-term time series of water vapor and its isotopes (2005–2015) presented in this study is retrieved from ground-based solar absorption FTIR measurements obtained at Zugspitze (47.42° N, 10.98° E, 2964 m a.s.l.). This high-altitude observatory is mostly located above the moist boundary layer or just below its upper edge (Carnuth et al., 2002). Sampled air masses are representative of free-tropospheric background conditions over central Europe. Within the framework of NDACC, a Bruker IFS 125HR spectrometer is operated at Zugspitze (Sussmann and Schäfer, 1997). Mid-infrared solar absorption spectra are recorded with a typical spectral resolution of 0.005 cm^{-1} (according to a maximum optical path difference of 175 cm) and an integration time of 7 min (averaging six individual scans). These high-resolution spectra provide information on a large number of trace gases, including water vapor and its isotopes (Sussmann et al., 2009; Schneider et al., 2013).

The isotopic composition of atmospheric water vapor with respect to HDO is typically expressed in terms of δD , defined as relative deviation of the HDO/ H_2O ratio (volume mixing ratios VMR_{HDO} and VMR_{H_2O}) from the ratio in Standard Mean Ocean Water ($R_{SMOW} = 3.1152 \times 10^{-4}$; Craig, 1961), i.e.,

$$\delta D = \left(\frac{VMR_{HDO}/VMR_{H_2O}}{R_{SMOW}} - 1 \right) \times 1000\text{‰}. \quad (1)$$

Additionally, columnar water vapor and δD values are applied as follows: column-based δD (δD_{col}) is calculated using the total column ratio in Eq. (1), and integrated water vapor (IWV) is thereafter given in units of millimeters (i.e., a water column of 1 mm corresponds to an atmospheric column density of 3.345×10^{21} molecules cm^{-2} , which can be derived considering the Avogadro constant and the molar mass as well as the density of water).

The retrieval of water vapor isotopes from mid-infrared FTIR spectra is very demanding due to the high variability of atmospheric water vapor compared with relatively small δD variations that result from the strong correlation of HDO and H_2O abundances. Retrieval strategies for tropospheric $\{H_2O, \delta D\}$ pairs from ground-based FTIR spectra were developed within the project MUSICA (Schneider et al., 2012, 2016; Barthlott et al., 2017). The latest retrieval version (v2015) is applied here, which comprises – briefly summarized – a logarithmic-scale retrieval with an interspecies constraint between HDO and H_2O , a non-Voigt line-shape model, and a priori profiles from LMDZ-iso simulations (isotopic version of the model Laboratoire de Météorologie Dynamique-Zoom; Risi et al., 2012; globally and annually averaged H_2O and HDO profiles). Two data products are available: (i) optimal estimation of water vapor for maximum vertical resolution of H_2O profiles (type 1) and (ii) quasi-optimal estimation of $\{H_2O, \delta D\}$ pairs derived by a posteriori data processing for consistent vertical sensitivity of H_2O and δD profiles (type 2). Error estimation for the type 2 product reveals a precision below 2% for integrated water vapor and below 30% for column-based δD (Schneider et al., 2012).

Applying this $\{H_2O, \delta D\}$ pair retrieval to Zugspitze FTIR spectra results in characteristic averaging kernels (depicted in Fig. 1) for the humidity-proxy state, i.e., $1/3 \times (\ln[H_2^{16}O] + \ln[H_2^{18}O] + \ln[HD^{16}O])$. Furthermore, the vertical sensitivity is shown, which is defined as the sum of the row elements of the averaging kernel matrix. A typical measurement on 29 October 2009 is chosen to represent the mean state of the Zugspitze time series (IWV = 3.8 mm, degrees of freedom for signal (DOFS) = 1.6 for the type 2 product). Optimally estimated H_2O profiles (type 1 product) derived from Zugspitze data provide an average DOFS of 2.8 (standard deviation (SD) = 0.2) and are sensitive up to 12 km altitude (vertical sensitivity larger than 0.75) as shown in Fig. 1a. In the following, we use the type 2 data product (Fig. 1b), which provides consistent $\{H_2O, \delta D\}$ profiles with vertical sensitivity up to 9 km (SD = 1 km) and maximum sensitivity at

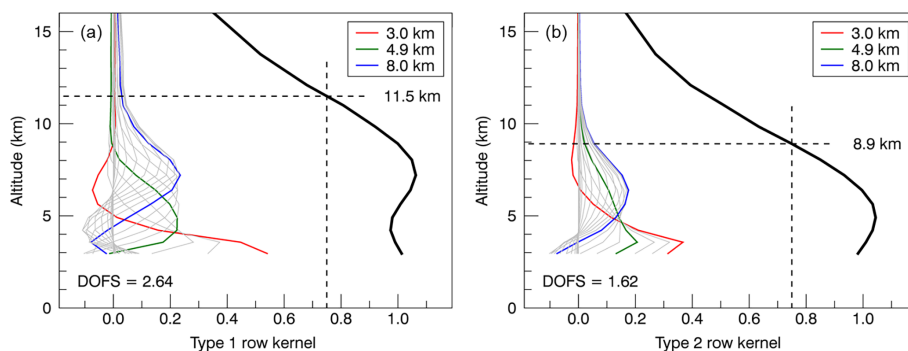


Figure 1. Averaging kernel rows of a typical H_2O measurement at Zugspitze (29 October 2009, 13:21 UTC) for two retrieval products: (a) optimally estimated humidity state (type 1) and (b) consistent $\{H_2O, \delta D\}$ state (type 2). Thick black lines show the vertical column sensitivity (sum of row elements of the averaging kernel matrix).

5 km a.s.l. altitude ($SD = 0.5$ km). On average, a DOFS of 1.6 ($SD = 0.2$) is obtained for H_2O and δD data (type 2) derived from Zugspitze spectra. The vertical resolution amounts to 2–3 km in the lower troposphere and 4–5 km in the middle–upper troposphere, as derived from the full width at half maximum of the row kernels. Retrieval quality selection is implemented by means of a threshold in the root-mean-square (RMS) residuals of the spectral fit, which is chosen to eliminate 5 % of all spectra with the highest RMS (see Sussmann et al., 2009). The full Zugspitze time series yields a mean normalized RMS of 0.26 %. Additionally, the sum of DOFS for all retrieved isotopes (H_2O , HDO, and $H_2^{18}O$) is required to exceed a value of 4.0. To compute daily means, only days with more than one measurement are considered.

3 Long-term $\{H_2O, \delta D\}$ time series and its seasonality above Zugspitze

Time series of daily mean integrated water vapor and column-based δD above Zugspitze are presented in Fig. 2 for the period 2005–2015. This data set comprises 1154 daily means derived from 10184 FTIR spectra after filtering by the quality selection criteria described above, with, on average, nine spectra per measurement day and 105 measurement days per year. Seasonal cycles are determined by fitting a third-order Fourier series to the time series. This fitted intra-annual model is subtracted from the time series for the purpose of deseasonalization. The multiannual mean of the deseasonalized IWV time series amounts to 4.4 ± 0.1 mm, which reflects dry conditions at the high-altitude Zugspitze site. Throughout this manuscript, uncertainties of mean values are given as a range of ± 2 SE (standard error); i.e., SE of the mean = SD / \sqrt{n} , with sample size n (except for the discussion in Sect. 4.3, where also ranges of ± 1 SE are considered). The multiannual mean of deseasonalized column-based δD amounts to -311.3 ± 3.8 ‰. This relatively low value corresponds to strong HDO depletion at high altitudes according to the altitude effect (dehydration with de-

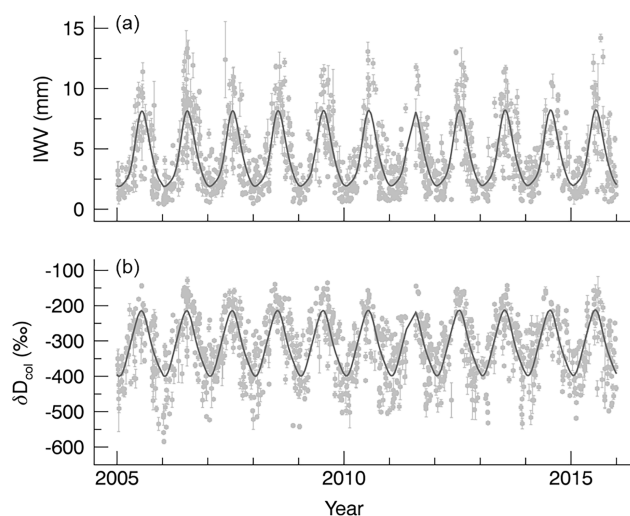


Figure 2. Daily mean time series of (a) integrated water vapor and (b) column-based δD retrieved from Zugspitze FTIR measurements. Error bars indicate uncertainties of daily means (± 2 SE), and grey lines show corresponding seasonal cycles (fitted third-order Fourier series).

creasing temperature). The multiannual mean δD_{col} value at Zugspitze is slightly less depleted than observations at the nearby but even higher Jungfraujoch station ($46.5^\circ N$, $8.0^\circ E$, 3580 m a.s.l.) with a multiannual mean δD_{col} of -330 ‰ (Schneider et al., 2012).

A short discussion is given on long-term trends derived from the daily mean IWV and δD_{col} time series (2005–2015). For column-based δD , we infer a statistically insignificant trend of 0.8 [-3.1 , 4.7] ‰ per decade (relative to the overall mean, uncertainty given as 95 % confidence interval). For IWV, a weak positive, and likewise insignificant, trend of 2.4 [-5.8 , 10.6] ‰ per decade (relative to overall IWV mean) is derived. These linear trends are determined by fitting a linear trend model by least-squares fit to the deseasonalized daily mean time series, and un-

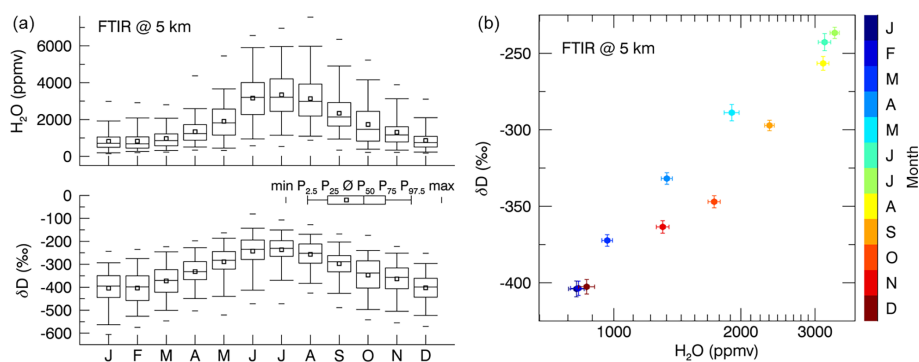


Figure 3. Seasonal cycles of water vapor and δD in the free troposphere above Zugspitze: **(a)** multiannual monthly means and frequency distributions (percentiles P specified in the legend) of FTIR data at 5 km a.s.l. and **(b)** $\{H_2O, \delta D\}$ plot for multiannual monthly means, with error bars indicating standard errors of monthly means (± 2 SE).

certainties are determined via bootstrap resampling of the residuals (Gardiner et al., 2008). Over the same time period, a significant positive temperature trend of 1.3 [0.5, 2.1] K per decade is observed at Zugspitze (derived from daily means of in situ temperature measurements coincident with FTIR spectra within a period of ± 30 min; source: Deutscher Wetterdienst, available at ftp://ftp-cdc.dwd.de/pub/CDC/observations_germany/climate/hourly). Assuming constant relative humidity (RH) and following the Clausius–Clapeyron equation (Schneider et al., 2010), the observed temperature increase translates to a positive IWV trend of 9.2 [3.7, 14.7] % per decade. This IWV trend deduced from the temperature increase in consideration of its confidence interval would be formally consistent with the most probable IWV trend observed. The assumption of constant RH is valid on large spatial scales, but RH slightly decreased over specific land regions (Hartmann et al., 2013), which would explain the relatively large calculated IWV trend compared to observations.

Strong seasonal cycles of free-tropospheric water vapor and δD are observed above Zugspitze (Fig. 3a). Multiannual monthly means are shown for data at 5 km a.s.l., where the maximum in vertical sensitivity of the $\{H_2O, \delta D\}$ pair product is located (see Fig. 1b). These data are representative for an altitude region of 3–7 km, which is the full width at half maximum of the corresponding averaging kernel row. The seasonal cycle amplitude (relative difference of maximum and minimum monthly mean) amounts to 140 % for H_2O and 50 % for δD relative to the overall mean. Both seasonal cycles show maxima in summer (July) and minima in winter (January). The δD maximum in summer results from more frequent ascending motions in summer with associated transport of less-HDO-depleted air masses from lower altitudes and latitudes (Risi et al., 2012). Stronger HDO depletion in winter (δD minimum) is caused by a stronger continental temperature gradient in winter and associated stronger dehydration during air mass transport from the Atlantic Ocean. Additionally, transport from eastern Europe oc-

curs more frequently during anticyclonic conditions in winter importing strongly depleted continental air masses (Christner, 2015). Monthly frequency distributions of single H_2O measurements are generally right-skewed, and variability is larger in summer (June–August) than in winter. This might be explained by extreme moistening events due to more frequent convection in summer and mixing with boundary layer air. For free-tropospheric δD measurements, monthly frequency distributions show a tendency to being moderately left-skewed (e.g., January, May, and June), which might point to episodic influence by strongly HDO-depleted air masses (e.g., originating in the upper troposphere or lower stratosphere). In the $\{H_2O, \delta D\}$ distribution plot (Fig. 3b), it becomes clear that the isotopic composition of atmospheric water vapor significantly changes over the course of a year: in spring it is less depleted in HDO than in autumn. This is mainly caused by seasonal variations in sea surface temperature of the Atlantic Ocean (i.e., the major moisture source) as derived from Rayleigh model simulations (see Fig. 5). An additional contribution is possibly due to increased mixing in spring compared to autumn. These seasonal variations in the water vapor isotopic composition above Zugspitze imply that δD observations provide information complementary to the H_2O data (e.g., Risi et al., 2012; Schneider et al., 2012).

In this section, we presented a unique decadal time series of water vapor and δD derived from FTIR measurements at Zugspitze representative of central European background conditions. In the following, these δD observations are used as a tracer of atmospheric transport to study its behavior in relation to different transport pathways to central Europe.

4 Transport patterns to the central European free troposphere

4.1 Moisture pathways related to δD outliers

To explore the potential of water vapor isotope observations as a proxy for transport processes, moisture transport path-

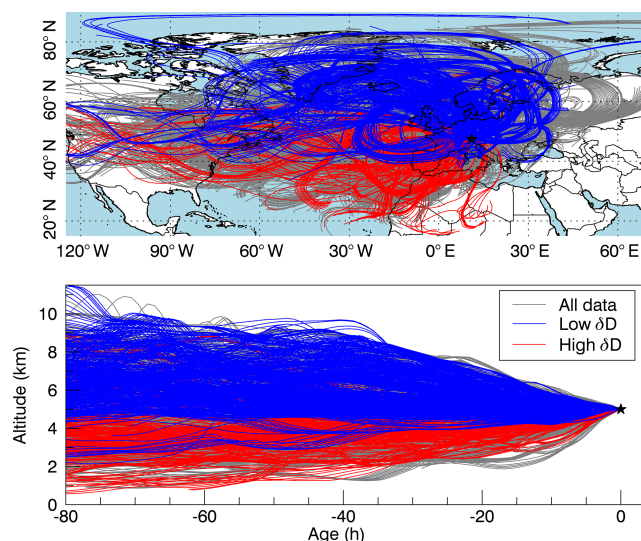


Figure 4. Backward trajectories of air masses arriving above Zugspitze (marked as black star) at 5 km a.s.l. altitude: map projection (upper panel) and vertical cross section (lower panel) of trajectories for all FTIR measurement times in 2005–2015 (grey lines) and for days identified as δD_{col} outliers (blue and red lines).

ways are identified for cases of extreme water vapor isotopic composition. The Zugspitze data set of $\{\text{H}_2\text{O}, \delta D\}$ pairs predominantly contains information on free-tropospheric moisture pathways reaching central Europe in the altitude region around 5 km a.s.l., as shown in Sect. 2 (see Fig. 1b). With the help of backward-trajectory analysis, these transport pathways are determined for outliers in column-based δD derived from the frequency distribution of the deseasonalized daily mean time series at Zugspitze (2005–2015). High outliers are defined as daily mean values larger than the 95th percentile of the distribution ($\delta D_{\text{col}} > -219\text{‰}$), and low outliers are days with δD_{col} below the 5th percentile ($\delta D_{\text{col}} < -430\text{‰}$). This yields 56 days of high and 57 days of low column-based δD outliers from a total of 1154 measurement days.

For all 2005–2015 FTIR measurements, 120 h backward trajectories arriving at 5 km a.s.l. above Zugspitze are calculated using the Air Resources Laboratory’s HYbrid Single-Particle Lagrangian Integrated Trajectory model (HYSPPLIT; available at <http://ready.arl.noaa.gov>; Stein et al., 2015). We apply meteorological data from the NCEP (National Center for Environmental Prediction) reanalysis (global 2.5° grid), which have yielded excellent results in interpreting transport related features in lidar data for many years (e.g., Trickl et al., 2010). Trajectory uncertainty is estimated to be 10–20 % of the travel distance (Stohl, 1998), which is fulfilled in the free troposphere according to our experience. Resulting backward trajectories are shown in Fig. 4 as horizontal and vertical projections. The initial point of each trajectory (i.e., the location from which the air mass was transported to Zugspitze) is chosen as the point of last condensation (LC),

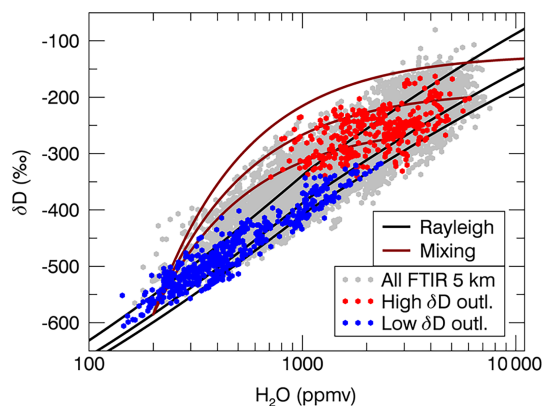


Figure 5. Free-tropospheric measurements of $\{\text{H}_2\text{O}, \delta D\}$ pairs above Zugspitze (5 km a.s.l.) for all 2005–2015 data and for high and low δD outliers as determined from the deseasonalized column-based δD time series. For comparison, simulated Rayleigh processes (initial evaporation at $T = 15^\circ\text{C}$; $\text{RH} = 80\%$; δD values of -60 , -130 , and -160‰) as well as mixing processes of upper-tropospheric air ($\text{VMR}_{\text{H}_2\text{O}} = 200$ ppmv, $\delta D = -585\text{‰}$) with three lower–middle-tropospheric air masses (i) $\text{VMR}_{\text{H}_2\text{O}} = 13\,500$ ppmv, $\delta D = -130\text{‰}$; (ii) $\text{VMR}_{\text{H}_2\text{O}} = 6100$ ppmv, $\delta D = -200\text{‰}$; (iii) $\text{VMR}_{\text{H}_2\text{O}} = 3000$ ppmv, $\delta D = -270\text{‰}$) are shown.

defined as the region where the relative humidity along the trajectory exceeds 80 % over a 3 h period (see González et al., 2016). Conditions at the point of last condensation determine the air parcel’s water vapor mixing ratio and its isotopic composition, as these quantities are conserved in the absence of sources and sinks (Galewsky et al., 2005; Noone et al., 2012), i.e., if mixing during transport is negligible and no further condensation occurred. If no LC point exists along the trajectory, full 120 h trajectories are depicted. The choice of 5-day trajectories appears appropriate in consideration of typical transport timescales, lifetimes of transported species, and trajectory uncertainty.

According to the location of Zugspitze in the zone of prevailing westerlies and in agreement with results from long-term ozone lidar measurements at the nearby Garmisch site (see Sect. 4.3), the majority of trajectories point to Atlantic moisture sources distributed over a wide latitude range (from the subtropics to polar regions). Several trajectories originate over the North American continent or even the Pacific region. Fewer trajectories arrive from eastern Europe or northern Africa. Figure 4 reveals clearly different transport patterns for low outliers of column-based δD observed at Zugspitze than for high outliers. For extraordinarily low δD_{col} observations ($\delta D_{\text{col}} < -430\text{‰}$), air masses mostly descend from high latitudes and altitudes, often related to cold advection at the rear side of an upper-level trough. In contrast, on days with very high δD_{col} observations ($\delta D_{\text{col}} > -219\text{‰}$), air masses predominately arrive from lower latitudes, ascending from lower altitudes, often in connection with warm advection at the front side of an upper-level trough. An overview

Table 1. Air mass origin and conditions at last condensation point for trajectories on δD outlier days (only if LC is found) given as mean values with uncertainties of two standard errors (SE) and the range of minimum and maximum values.

	High δD_{col} (>95th perc.)		Low δD_{col} (<5th perc.)	
	Mean (± 2 SE)	Min, Max	Mean (± 2 SE)	Min, Max
Latitude ($^{\circ}$ N)	46 [45, 47]	30, 55	62 [61, 63]	34, 75
Altitude (km a.s.l.)	4.6 [4.4, 4.9]	0.4, 8.1	6.5 [6.4, 6.6]	3.3, 8.7
Pressure (hPa)	579 [560, 599]	333, 963	438 [432, 445]	317, 678
Temperature (K)	260 [259, 262]	226, 289	242 [241, 243]	224, 274
$\text{VMR}_{\text{H}_2\text{O}}$ (10^3 ppmv)	4.1 [3.7, 4.5]	0.3, 15.6	1.2 [1.1, 1.3]	0.2, 8.5

of the conditions at the last condensation points and their positions is given in Table 1 for trajectories arriving on δD outlier days (only if an LC point is found along the trajectory). This analysis shows that air masses originate from significantly higher latitudes (about 60° N) and altitudes (about 6.5 km) on low- δD -outlier days than on high- δD days. Last condensation occurred at significantly lower temperatures and under dryer conditions for low- δD days than for high- δD days. Consequently, mostly dry air masses are transported to Zugspitze in connection with low δD .

A first-order interpretation of the $\{\text{H}_2\text{O}, \delta D\}$ data pairs can be obtained by their comparison to theoretical Rayleigh and mixing lines (Wiegele et al., 2014; Schneider et al., 2015; González et al., 2016). Figure 5 shows the $\{\text{H}_2\text{O}, \delta D\}$ distribution plot for Zugspitze data at 5 km a.s.l. along with simulated Rayleigh and mixing processes. Rayleigh models simulate the idealized process of gradual dehydration of an air parcel during adiabatic cooling with immediate removal of the condensate. Simultaneously, the remaining water vapor becomes more and more depleted in HDO, as heavier isotopes preferentially condense. Rayleigh dehydration processes (black lines in Fig. 5) are simulated using a mean midlatitude profile of pressure and temperature (Christner, 2015, Table 13) with initial evaporation conditions characteristic of midlatitude oceanic or continental moisture sources (temperature of 15°C ; RH of 80 %; and different δD values: -60 , -130 , and -160 ‰). Furthermore, mixing processes of dry, HDO-depleted upper-tropospheric air ($\text{VMR}_{\text{H}_2\text{O}} = 200$ ppmv, $\delta D = -585$ ‰) with moist lower-middle-tropospheric air masses are simulated (dark red lines in Fig. 5). The δD value of the mixture is mainly determined by the δD value of the mixing partner with higher water vapor (Noone et al., 2011). Three moist mixing partners are considered here: (i) boundary layer air with $\text{VMR}_{\text{H}_2\text{O}} = 13\,500$ ppmv and $\delta D = -130$ ‰, (ii) moderately dehydrated and depleted air with $\text{VMR}_{\text{H}_2\text{O}} = 6100$ ppmv and $\delta D = -200$ ‰, and (iii) even more dehydrated air with $\text{VMR}_{\text{H}_2\text{O}} = 3000$ ppmv and $\delta D = -270$ ‰. Comparing these simulated transport processes with $\{\text{H}_2\text{O}, \delta D\}$ pairs observed at Zugspitze (5 km a.s.l.) reveals underlying transport regimes on designated δD_{col} outlier days: measurements on days of low δD outliers group along Rayleigh

curves, while data on high- δD -outlier days preferentially group along simulated mixing lines. We tentatively conclude that the first group (low δD_{col}) experienced slow ascent from mostly midlatitude moisture sources with associated gradual dehydration by condensation and rainout, which is followed by subsidence to the middle troposphere above Zugspitze with only minor mixing with moist and less-HDO-depleted air masses. In contrast, the second group (high δD_{col}) reveals air masses ascending from lower altitudes and latitudes, which are influenced by the coexistence or mixing of moist lower-tropospheric and drier middle-upper-tropospheric air masses.

The δD outlier analysis reveals the potential of water vapor isotope observations for investigating moisture transport pathways. As along these pathways many other atmospheric species can also be transported, $\{\text{H}_2\text{O}, \delta D\}$ data pairs might also serve as a useful tracer in long-range-transport research.

4.2 $\{\text{H}_2\text{O}, \delta D\}$ signatures of long-range-transport events

Moisture transport pathways to the central European free troposphere were identified for days with extraordinary high or low δD observations at Zugspitze in Sect. 4.1. Going a step further, we examine to what extent $\{\text{H}_2\text{O}, \delta D\}$ observations also provide information on long-range-transport events of various other atmospheric tracers. In the following, $\{\text{H}_2\text{O}, \delta D\}$ signatures are analyzed for three FTIR measurement categories, each of which is influenced by a distinct long-range-transport pattern to the central European free troposphere: (i) intercontinental transport from North America (TUS), (ii) intercontinental transport from northern Africa (TNA), and (iii) stratospheric air intrusions (STIs). Zugspitze FTIR measurements are assigned to these categories by classification of respective backward trajectories (see Sect. 4.1) using the criteria given in Table 2 and described in more detail in the following paragraphs.

Intercontinental transport from North America may effectively carry anthropogenic pollution plumes (e.g., ozone, aerosols) to central Europe within typically 3–10 days (Stohl and Trickl, 1999; Trickl et al., 2003; Huntrieser et al., 2005). Consequently, North American emissions strongly contribute

Table 2. Backward-trajectory classification by source region and resulting distributions of deseasonalized $\text{VMR}_{\text{H}_2\text{O}}$ and δD for the long-range-transport patterns of stratospheric intrusions (STIs), transport from North America (TUS), and transport from northern Africa (TNA).

	STI	TUS	TNA
Trajectory source region			
Latitude	>20° N	25–45° N	15–30° N
Longitude	–	70–110° W	15° W–35° E
Altitude	>zonal mean TP	0–2 km	0–2 km
{H ₂ O, δD } signature (mean ± 2 SE)			
$\text{VMR}_{\text{H}_2\text{O}}$ (10 ³ ppmv)	1.21 [1.07, 1.34]	2.42 [2.25, 2.59]	2.78 [2.63, 2.93]
δD (‰)	–384 [–397, –372]	–315 [–326, –303]	–251 [–257, –246]

to the European total column tracer mass (i.e., 43 % for a tracer with a 10-day lifetime; Stohl et al., 2002). The typical pathway of polluted boundary layer air from North America to Europe is uplift in a WCB (i.e., an ascending air stream ahead of a surface cold front in an extratropical cyclone) and subsequent transport by strong westerly flows in the middle and upper troposphere. The North American tracer enters Europe typically at altitudes of 4–8 km and at high latitudes (>60° N). Here, the circulation frequently turns anticyclonic, and tracers eventually reach the northern Alps (Huntrieser and Schlager, 2004). WCB climatologies reveal a major inflow region at the southeastern coast of North America (Stohl, 2001; Eckhardt et al., 2004; Madonna et al., 2014). In the following, Zugspitze backward trajectories passing this source region (25–45° N, 70–110° W, 0–2 km altitude) are assigned to the TUS category.

The second transport category considered is intercontinental transport from northern Africa to the European free troposphere. Associated transport of Saharan mineral dust influences air quality, soil fertility, radiative budget, and atmospheric oxidation capacity in the receptor regions (Ravishankara, 1997). Each year, 5–15 events of mineral dust import occur in central Europe, each lasting 1–3 days (Papayannis et al., 2008; Flentje et al., 2015). The TNA category includes backward trajectories passing the Saharan boundary layer region (15–30° N, 15° W–35° E, 0–2 km altitude; Engelstaedter et al., 2006).

The third transport class accounts for extratropical stratospheric intrusions, which occur mainly in synoptic-scale processes such as tropopause folds and cutoff lows near the polar or subtropical jet stream (Stohl et al., 2003). Filaments of ozone-rich stratospheric air descend from the lowermost stratosphere and proceed to the central European free troposphere via several pathways (Trickl et al., 2010, 2011; Škerlak et al., 2014). Mixing with tropospheric air might exhibit relatively long timescales as little modification is reported even after several days of transport (Trickl et al., 2014). In the following, Zugspitze backward trajectories originating above the zonal mean tropopause (TP) at latitudes above 20° N are assigned to the STI category (required minimum resi-

dence time of 5 h above TP, which is penetrated at least once by more than 1 km). Zonal mean tropopause altitudes were taken from ECMWF data (European Centre for Medium-Range Weather Forecasts) as given in Eckhardt et al. (2004). This TP definition is chosen as potential vorticity for a dynamical TP definition is not provided within HYSPLIT.

These long-range-transport categories (TUS, TNA, and STI) are expected to have characteristic imprints on {H₂O, δD } pairs observed at Zugspitze. Stratospheric intrusions originate in the lowest few kilometers of the stratosphere (Trickl et al., 2014, 2016), where moisture content is extremely low and the mean δD profile exhibits a minimum before increasing at higher altitudes due to growing influence of isotopically heavier water vapor from methane oxidation (Zahn et al., 2006; Steinwagner et al., 2010). Consequently, STI events potentially import relatively dry and HDO-depleted air masses to the central European troposphere. By contrast, TUS and TNA air masses originate in the moist boundary layer and may transport relatively moist and less-HDO-depleted air masses to central Europe. However, strong WCB updraft during TUS events may cause air mass dehydration and HDO depletion through rainout (Rayleigh process).

The resulting Zugspitze backward-trajectory categories obtained by the transport criteria described above are presented in Fig. 6. Distributions of deseasonalized $\text{VMR}_{\text{H}_2\text{O}}$ and δD for the corresponding classes of free-tropospheric Zugspitze FTIR data (5 km a.s.l.) are depicted in Fig. 7. Considering uncertainty of ± 2 SE, mean $\text{VMR}_{\text{H}_2\text{O}}$ and δD values are significantly different for all three transport classes (see Table 2). As expected, STI is associated with the driest and most-HDO-depleted air masses. TNA is connected to moister and less-depleted air, while TUS exhibits intermediate $\text{VMR}_{\text{H}_2\text{O}}$ and δD values. The standard deviation of $\text{VMR}_{\text{H}_2\text{O}}$ distributions is similar for all transport classes ($SD \sim 10^3$ ppmv). In the case of δD distributions, TNA shows less scatter ($SD = 34$ ‰) than TUS ($SD = 65$ ‰) and STI ($SD = 73$ ‰). This indicates a quite homogeneous source region and transport regime for TNA. Larger scatter for TUS might result from variable strengths of WCB uplift

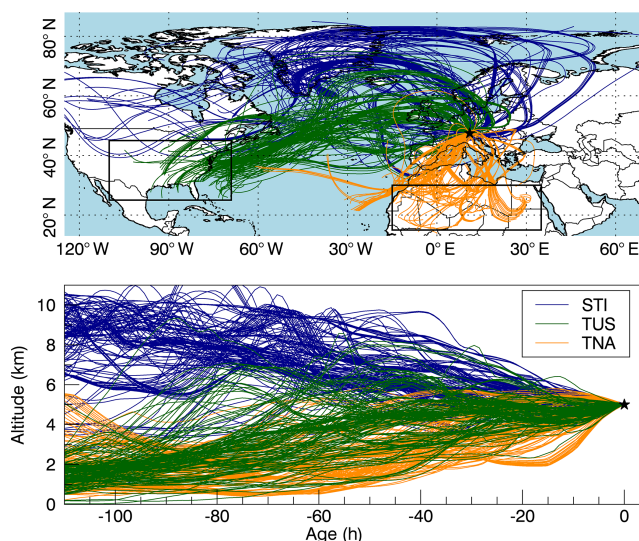


Figure 6. Categorization of backward trajectories for long-range-transport events: map projection (upper panel) and vertical cross section (lower panel) for stratospheric intrusions, transport from North America, and transport from northern Africa. Black boxes indicate source regions used to classify TUS and TNA (see Table 2), and the black star marks Zugspitze.

causing various levels of dehydration and HDO depletion. Relatively large scatter in the δD distribution for STI events implies that air masses weakly depleted in HDO are also observed during STI events. This could be for several reasons: first, stratospheric intrusions with depths ranging from a few hundred to several thousand meters are not necessarily resolved by the relatively coarse vertical resolution of the FTIR δD product. Second, as a climatological tropopause altitude is applied to identify STI events, local and seasonal TP variations are not accounted for; i.e., (upper-)tropospheric trajectories might also be included in the STI class. Third, mixing with tropospheric air might occur during transport from the stratosphere, although this was found to be very slow in the free troposphere (Trickl et al., 2014). Fourth, δD values in the lower stratosphere might be less depleted than predicted from Rayleigh processes, which is probably caused by extratropical troposphere–stratosphere transport, e.g., by convectively lofted ice (Hanisco et al., 2007; Steinwagner et al., 2010; Randel et al., 2012). All these mechanisms would yield higher δD observations at Zugspitze than expected for STI events from the δD minimum in the lower stratosphere.

In analogy to Fig. 5, $\{H_2O, \delta D\}$ data pairs for these long-range-transport patterns are interpreted by comparison to theoretical Rayleigh and mixing lines as depicted in Fig. 8. For TNA events, we derive from this analysis that moist boundary layer air is imported to the free troposphere by means of dry convection without significant condensation and cloud formation (González et al., 2016; Schneider et al., 2016). Therefore, TNA air masses are less depleted in HDO (higher

δD values). In the case of TUS events, either dry or moist air masses can be imported to central Europe. TUS transport is generally in line with simulated Rayleigh processes and suggests that moist TUS air masses originate over warmer surfaces while drier TUS air masses have their origin over colder regions. The STI category also largely agrees with Rayleigh models. In the case of dry STI events, air masses seem to be partially influenced by modeled mixing processes of dry upper-tropospheric or lower-stratospheric air with free-tropospheric air masses.

Overall, we find distinct $\{H_2O, \delta D\}$ fingerprints in Zugspitze FTIR data for three categories of long-range-transport patterns (TUS, TNA, and STI). The analysis presented shows that consistent $\{H_2O, \delta D\}$ observations are applicable for studying atmospheric transport events to the central European free troposphere.

4.3 Combination with lidar and in situ measurements of transport tracers

Transport categories analyzed in Sect. 4.2 identify backward trajectories and FTIR measurements which are potentially influenced by long-range transport of relevant atmospheric tracers to central Europe. However, this analysis cannot determine whether tracers other than $\{H_2O, \delta D\}$ were actually transported to a significant extent along the trajectory to the receptor region. Actual tracer transport would require substantial emissions in the respective source region during air mass overpass and depends on tracer reactivity as well as on meteorological conditions during transport to central Europe. In the following, we use lidar and in situ observations of conventional transport tracers (i.e., ozone, aerosols, and humidity) to identify events of long-range tracer transport reaching the northern Alps and to analyze the respective $\{H_2O, \delta D\}$ signatures in Zugspitze FTIR measurements.

Ozone and aerosol lidar measurements obtained at the Garmisch site ($47.48^\circ N$, $11.06^\circ E$, 743 m a.s.l.) close to Zugspitze offer the possibility to detect long-range-tracer-transport events reaching the northern Alps. We analyze Garmisch lidar observations in the period 2013–2015 to identify mineral dust import from northern Africa and stratospheric air intrusions. Mineral dust transport from northern Africa (TNA) becomes apparent in lidar profiles as elevated aerosol layers, which are attributed to northern African origin by HYSPLIT trajectory analysis. Stratospheric intrusions (STIs) appear in lidar profiles as layers with a vertical extent from 200 m up to several kilometers, which exhibit ozone enhancements of the order of 10 ppb or more relative to ozone concentrations observed in the layers above and below. Corresponding layers of low relative humidity ($RH < 10\%$) are found in radiosonde profiles recorded in Munich ($48.25^\circ N$, $11.55^\circ E$, 492 m a.s.l.) and in water vapor profiles from differential absorption lidar measurements at Zugspitze (Vogelmann et al., 2015). These dry, ozone-rich layers are assigned to being of stratospheric origin either by 4-day stratospheric-

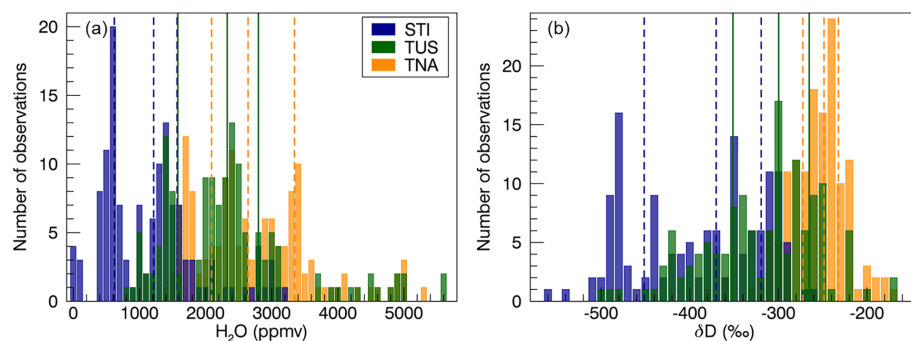


Figure 7. $\{H_2O, \delta D\}$ signatures of long-range-transport events: distributions of deseasonalized (a) $VMRH_2O$ and (b) δD in the free troposphere above Zugspitze (5 km a.s.l.) for stratospheric intrusions, transport from North America, and transport from northern Africa as identified in Fig. 6. Vertical lines show the median and 25th–75th-percentile range of the distributions.

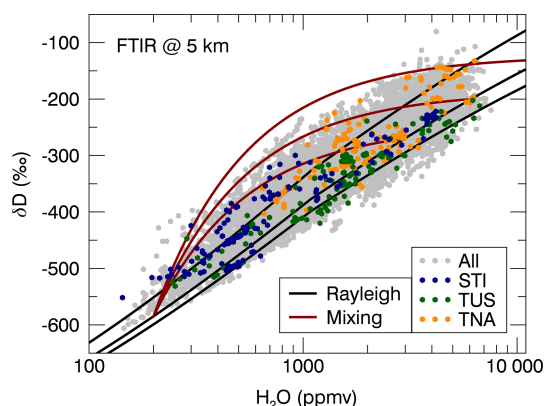


Figure 8. Free-tropospheric measurements of $\{H_2O, \delta D\}$ pairs above Zugspitze (5 km a.s.l.) for all 2005–2015 data and for long-range-transport events of stratospheric intrusions, transport from North America, and transport from northern Africa. Simulated Rayleigh and mixing processes are shown for comparison (compare Fig. 5).

intrusion forecasts or by 315 h HYSPLIT trajectories (Trickl et al., 2010).

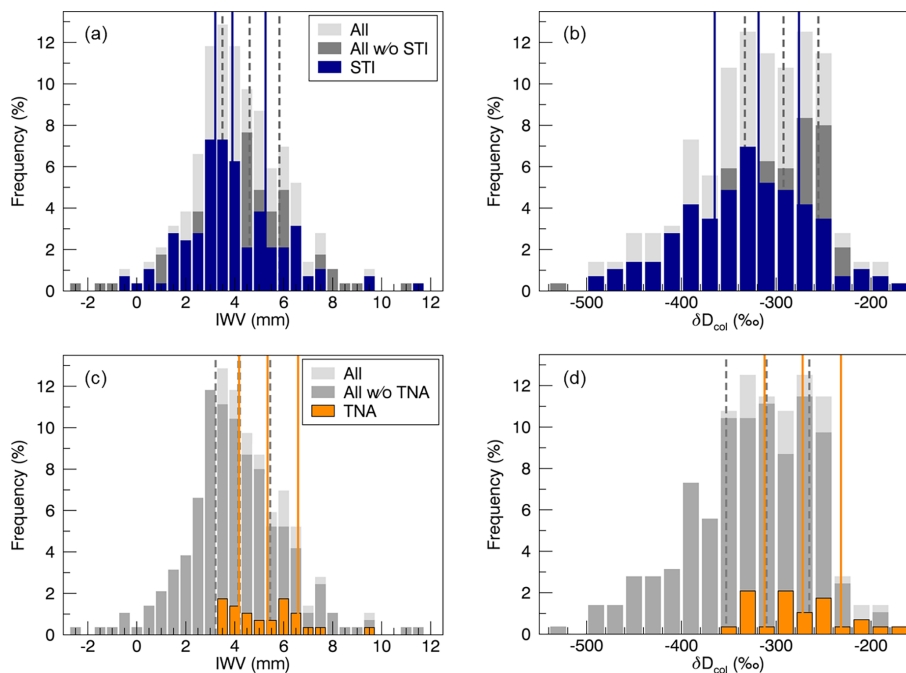
For the years 2013–2015, Garmisch lidar observations reveal 41 days influenced by TNA events and 242 days of STI events from a total of 360 observation days. Coincident FTIR measurements at Zugspitze are available on 27 (136) days of these TNA (STI) days, which corresponds to 9% (47%) of all FTIR measurement days in the 2013–2015 period. Figure 9 and Table 3 present distributions of deseasonalized daily mean IWV and δD_{col} for this compilation of FTIR measurements. For TNA days with mineral dust transport, we find significantly higher mean IWV and less HDO depletion ($IWV = 5.47 [4.90, 6.05]$ mm, $\delta D_{col} = -266 [-284, -247]$ ‰) than for all FTIR data in 2013–2015 excluding the TNA events (considering uncertainties of ± 2 SE). This result can be related to transport of less-depleted air masses from lower altitudes and latitudes during TNA events. Additionally, mineral dust transport requires that no condensation

(i.e., dehydration and depletion) occurred along the pathway to avoid wet deposition of aerosols. In contrast, STI events show a tendency to lower IWV and stronger HDO depletion ($IWV = 4.18 [4.01, 4.34]$ mm, $\delta D_{col} = -322 [-327, -316]$ ‰) compared to all FTIR data excluding STI events (significant difference if considering uncertainties of ± 1 SE; see Table 3). The broad δD distribution for STI days is similar to results found in Sect. 4.2 and can probably be explained by similar arguments.

Frequently, stratospheric intrusions penetrate deep into the troposphere, eventually reaching mountain summit observatories or even surface stations (e.g., Eisele et al., 1999; Schuepbach et al., 1999; Stohl et al., 2000; Lefohn et al., 2012; Lin et al., 2012; Itoh and Narazaki, 2016; Ott et al., 2016). In the following, deep stratospheric intrusions (DSTIs) are defined as STI events reaching the summit of Zugspitze. DSTI events can be detected by in situ measurements of stratospheric tracers, such as high beryllium-7 (Be-7) and low relative humidity (Trickl et al., 2010). The cosmogenic radionuclide beryllium-7 is a good, but not unambiguous, indicator for stratospheric air, as it is produced mainly (i.e., to 67%; Lal and Peters, 1967) in the stratosphere. In a study on deep stratospheric intrusions over central Europe, Trickl et al. (2010) examined criteria for the detection of stratospheric air intrusions based on filtering Zugspitze in situ measurements. In the following, these filtering criteria are applied to identify deep stratospheric intrusions to the summit of Zugspitze. The first indicator (flag 1) combines the occurrence of dry air masses ($RH < 60\%$) with simultaneous high Be-7 concentrations (Be-7 larger than the 85th percentile of its annual distribution). The second indicator (flag 2) identifies DSTI events by means of the same relative humidity threshold ($RH < 60\%$) in combination with the occurrence of very dry air masses ($RH < 30\%$) within 6 h before or after the respective measurement. As elaborated in Trickl et al. (2010), these filtering criteria rather reliably verify stratospheric air intrusions predicted by trajectory calculations based on operational ECMWF forecasts. For the period 2005–2015, in situ measurements at Zugspitze provide

Table 3. Distributions of deseasonalized daily mean IWV and δD_{col} data (FTIR Zugspitze) for STI and TNA events identified from Garmisch lidar measurements in 2013–2015 given as mean ± 2 SE (for STI, mean ± 1 SE is also given).

	Mean ± 2 SE		Mean ± 1 SE	
	IWV (mm)	δD_{col} (‰)	IWV (mm)	δD_{col} (‰)
STI	4.18 [3.85, 4.51]	−322 [−333, −310]	4.18 [4.01, 4.34]	−322 [−327, −316]
All w/o STI	4.61 [4.29, 4.94]	−302 [−312, −292]	4.61 [4.45, 4.77]	−302 [−307, −297]
All	4.41 [4.18, 4.64]	−311 [−319, −304]	4.41 [4.29, 4.52]	−311 [−315, −307]
All w/o TNA	4.30 [4.05, 4.54]	−316 [−324, −308]		
TNA	5.47 [4.90, 6.05]	−266 [−284, −247]		

**Figure 9.** Distributions of deseasonalized daily mean IWV and column-based δD for days identified as (a, b) stratospheric-intrusion events and as (c, d) dust transport events from northern Africa. For comparison, distributions for all FTIR measurement days in 2013–2015 are shown as well as distributions excluding the respective transport events. Vertical lines indicate median and 25th–75th-percentile range for each distribution (STI/all without STI and TNA/all without TNA).

12 h averages of Be-7 and hourly RH data (T. Steinkopff, personal communication, 2016), which are displayed in Fig. 10. Periods of deep stratospheric intrusion are marked as identified using flag 1. In addition, Fig. 10 shows coincident FTIR observations of lower-tropospheric δD (deseasonalized hourly means of partial columns from 3 to 5 km a.s.l.). From a total of 6560 coincident hourly means in 2005–2015, 24 % are identified as DSTI events when using in situ flag 1 and 38 % when using flag 2. The tendency of flag 2 to cover more intrusion cases is expected from results in Trickl et al. (2010).

The distribution of lower-tropospheric δD for deep-stratospheric-intrusion events is depicted in Fig. 11. The mean value of lower-tropospheric δD is significantly lower for DSTI events than for the full time series without these events. It amounts to -334 [-337 , -330]‰ (mean ± 2 SE)

for DSTI-flag 1 and -331 [-334 , -328]‰ for flag 2. For the full time series excluding DSTI events from flag 1 (flag 2), the mean value is -284 [-286 , -282]‰ (-274 [-276 , -273]‰). The mean of the full time series amounts to -296 [-298 , -294]‰. Scatter of lower-tropospheric δD distributions is about 70‰ for both DSTI flags. Overall, both flags for the identification of deep stratospheric intrusions from in situ observations provide consistent results with respect to the distribution of lower-tropospheric δD derived from coincident FTIR measurements. The significant shift of the lower-tropospheric δD distribution to lower δD values for DSTI events at Zugspitze agrees with the conception of intrusions originating in the strongly HDO-depleted lower-stratosphere region. Nevertheless, the δD distribution for DSTI events exhibits a relatively large scatter, which im-

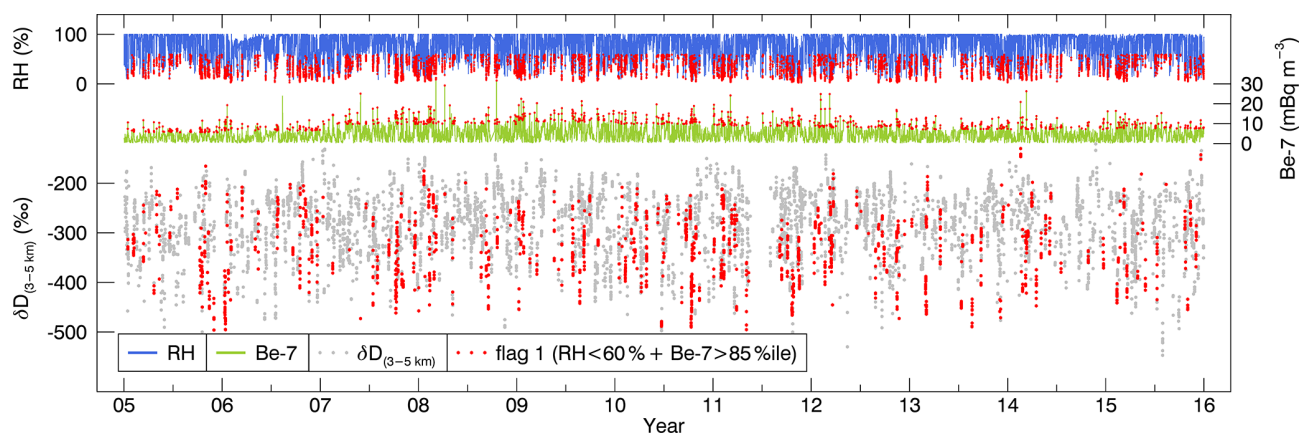


Figure 10. Deep stratospheric intrusions at Zugspitze in 2005–2015 derived from in situ observations of stratospheric tracers (relative humidity and Be-7) using DSTI-flag 1 and coincident FTIR data of lower-tropospheric δD (deseasonalized hourly means of 3–5 km partial columns).

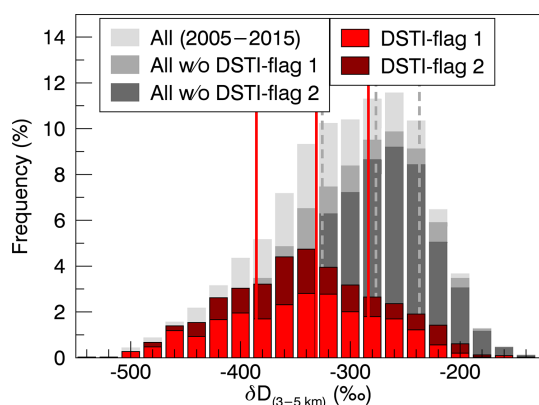


Figure 11. Distribution of lower-tropospheric δD (deseasonalized hourly means) for deep-stratospheric-intrusion events identified from Zugspitze in situ observations using two different flags (DSTI-flag 1: $RH < 60\%$ and $Be-7 > 85\text{th percentile}$; DSTI-flag 2: $RH < 60\%$ and $1 \times RH < 30\%$ within ± 6 h). For comparison the distribution is shown for all FTIR measurements coincident with in situ data in 2005–2015 as well as all data excluding DSTI events. Vertical lines indicate median and 25th–75th-percentile range of the distribution for DSTI-flag 1 and all data without DSTI-flag 1.

plies that weakly depleted air masses are also found for DSTI events. This result is in line with relatively broad δD distributions found for the STI category in Sect. 4.2 and for STI events identified from lidar measurements (see Fig. 9).

Correlation analysis for all coincident measurements of lower-tropospheric δD (FTIR) and Be-7 (in situ) yields a significant negative correlation (99 % confidence). Although this correlation is very weak (correlation coefficient of $R = -0.295$), it is in line with the negative correlation expected, as Be-7 concentrations increase with altitude towards the lower stratosphere, whereas δD values decrease with altitude. The low correlation coefficient can most plausibly be

explained by the different vertical sensitivity of in situ data compared to the lower-tropospheric FTIR partial columns potentially influenced by various different air masses and mixing.

5 Summary and conclusions

In this study, we presented a decadal time series of water vapor and δD above Zugspitze (2005–2015) derived from mid-infrared FTIR measurements within the NDACC framework, which are representative of central European background conditions. The Zugspitze $\{H_2O, \delta D\}$ data product provides an average DOFS of 1.6 for consistent H_2O and δD profiles with a maximum vertical sensitivity in the free troposphere (around 5 km a.s.l.). For the time period 2005–2015, we found no statistically significant trend of integrated water vapor and column-based δD . However, the weakly positive (insignificant) IWV trend can be reconciled with the significant temperature increase at Zugspitze over this time period, assuming constant relative humidity. Both IWV and δD_{col} exhibit strong seasonal cycles with summer maxima and winter minima. In the $\{H_2O, \delta D\}$ distribution plot, it becomes obvious that water vapor isotope data provide additional information not contained in H_2O observations alone.

Consistent $\{H_2O, \delta D\}$ observations are a valuable proxy for atmospheric transport pathways. We demonstrated the potential of this new transport tracer by analyzing a compilation of backward trajectories to the free troposphere above Zugspitze (5 km a.s.l.). Distinct moisture pathways to the central European free troposphere were identified for days of extraordinarily high or low column-based δD observations at Zugspitze. While low- δD observations are predominantly associated with descending dry air masses from higher latitudes, high- δD data are mostly related to ascending moist air masses from lower latitudes.

Significantly different $\{H_2O, \delta D\}$ signatures were found for three main long-range-transport pathways to central Europe, i.e., stratospheric intrusions, intercontinental transport from North America, and intercontinental transport from northern Africa. We identified Zugspitze FTIR measurements influenced by these transport patterns by means of backward-trajectory classification. The corresponding free-tropospheric VMR_{H_2O} distributions exhibit mean values (± 2 SE) of $1.2 [1.1, 1.3] \times 10^3$ ppmv (STI), $2.4 [2.2, 2.6] \times 10^3$ ppmv (TUS), and $2.8 [2.6, 2.9] \times 10^3$ ppmv (TNA). Mean free-tropospheric δD values are $-384 [-397, -372] \text{‰}$ (STI), $-315 [-326, -303] \text{‰}$ (TUS), and $-251 [-257, -246] \text{‰}$ (TNA). The finding of distinct $\{H_2O, \delta D\}$ fingerprints was validated for verified STI and TNA events, deduced by data filtering using 2013–2015 lidar and in situ measurements at Zugspitze and nearby Garmisch. Mean values of IWV and δD_{col} for these TNA (STI) events are significantly different with respect to the rest of the time series considering uncertainties of ± 2 SE (± 1 SE). Deep stratospheric intrusions to Zugspitze (data filtering using 2005–2015 in situ humidity and beryllium-7 data) also reveal a significantly lower mean value of lower-tropospheric δD (3–5 km a.s.l.) than the full time series considering uncertainties of ± 2 SE.

These results confirm the import of dry and strongly HDO-depleted air masses expected for STI events, which originate in the extremely dry and HDO-depleted lowermost stratosphere. STI events generally agree with Rayleigh simulations but may be influenced by mixing processes of dry lower-stratospheric air with free-tropospheric air masses. In contrast, TNA air masses originate in the moist boundary layer and are associated with dry convection and import of relatively moist and less-HDO-depleted air masses to central Europe. TUS air masses also have their origin in the boundary layer, and their humidity depends on the surface temperature of their oceanic or continental source region. However, WCB updrafts during TUS events may cause variable degrees of air mass dehydration and HDO depletion. Overall, $\{H_2O, \delta D\}$ observations add new information to previous long-range-transport studies using lidar and in situ measurements of conventional transport tracers (i.e., humidity, ozone, beryllium-7, and aerosols), which offer the possibility to identify transport events of relevant tracers actually reaching northern Alpine stations.

In future work, backward-trajectory classification for identifying STI events could be improved, e.g., by application of a dynamical tropopause definition. $\{H_2O, \delta D\}$ observations could also be combined with FTIR data of other relevant trace species, such as ozone or carbon monoxide, for more reliable detection of transport events. Furthermore, $\{H_2O, \delta D\}$ profile information provided by FTIR measurements (approximately two tropospheric partial columns) could be combined with lidar or radiosonde humidity profiles with high vertical resolution, especially for studying thin filaments of stratospheric air intrusions. Regarding long-term trends, water vapor trends could be estimated for different transport

categories to investigate to what extent changing transport patterns contribute to observed water vapor trends. Of particular importance would be research on the connection between lower-stratospheric humidity trends, trends in the frequency of stratosphere–troposphere transport events, and tropospheric water vapor trends.

Finally, combining $\{H_2O, \delta D\}$ pair measurements from all globally distributed NDACC sites with observations from in situ and lidar networks and operational transport modeling could provide a unique new database for studying the impact of atmospheric transport with respect to climate, air quality, and human health. $\{H_2O, \delta D\}$ data could serve as an indicator for the presence of pronounced transport events at Zugspitze to initiate case studies using observations of the respective relevant tracers (e.g., humidity, aerosols, ozone, pollen). On demand, further FTIR sites located along simulated transport trajectories could be included. Particular focus has to be put on deepening our knowledge of the coupling of changing transport patterns in the global circulation, changes in the intensity of the hydrological cycle, and climate change.

Data availability. The data underlying this publication can be obtained at any time from the corresponding author on demand.

Competing interests. The authors declare that they have no conflict of interest.

Acknowledgements. We thank Hans Peter Schmid (IMK-IFU) for his continual interest in this work. We gratefully acknowledge Frank Hase (IMK-ASF) for his support in using PROFFIT and the NOAA Air Resources Laboratory for the providing the HYSPLIT transport and dispersion model (www.ready.noaa.gov). Our work has been funded by the Bavarian State Ministry of the Environment and Consumer Protection via grant VAO-II TPI/01. We thank the Deutsche Forschungsgemeinschaft and Open Access Publishing Fund of the Karlsruhe Institute of Technology for support. This study has benefited from progress achieved in the framework of the European Research Council project MUSICA (FP7/(2007–2013)/ERC grant agreement number 256961).

The article processing charges for this open-access publication were covered by a Research Centre of the Helmholtz Association.

Edited by: Vincent-Henri Peuch

Reviewed by: two anonymous referees

References

- Barthlott, S., Schneider, M., Hase, F., Blumenstock, T., Kiel, M., Dubravica, D., García, O. E., Sepúlveda, E., Mengistu Tsidu, G., Takele Kenea, S., Grutter, M., Plaza-Medina, E. F., Stremme, W., Strong, K., Weaver, D., Palm, M., Warneke, T., Notholt, J., Mahieu, E., Servais, C., Jones, N., Griffith, D. W. T., Smale, D., and Robinson, J.: Tropospheric water vapour isotopologue data ($H_2^{16}O$, $H_2^{18}O$, and $HD^{16}O$) as obtained from NDACC/FTIR solar absorption spectra, *Earth Syst. Sci. Data*, 9, 15–29, <https://doi.org/10.5194/essd-9-15-2017>, 2017.
- Beekmann, M., Ancellet, G., Blonsky, S., De Muer, D., Ebel, A., Elbern, H., Hendricks, J., Kowol, J., Mancier, C., Sladkovic, R., and Smit, H. G. J.: Regional and global tropopause fold occurrence and related ozone flux across the tropopause, *J. Atmos. Chem.*, 28, 29–44, <https://doi.org/10.1023/A:1005897314623>, 1997.
- Bengtsson, L., Bonnet, R. M., Calisto, M., Destouni, G., Gurney, R., Johannessen, J., Kerr, Y., Lahoz, W. A., and Rast, M. (Eds.): *The Earth's Hydrological Cycle*, Springer, Dordrecht, Netherlands, 2014.
- Boesch, H., Deutscher, N. M., Warneke, T., Byckling, K., Cogan, A. J., Griffith, D. W. T., Notholt, J., Parker, R. J., and Wang, Z.: HDO/ H_2O ratio retrievals from GOSAT, *Atmos. Meas. Tech.*, 6, 599–612, <https://doi.org/10.5194/amt-6-599-2013>, 2013.
- Bony, S., Stevens, B., Frierson, D. M., Jakob, C., Kageyama, M., Pincus, R., Shepherd, T. G., Sherwood, S. C., Siebesma, A. P., Sobel, A. H., and Watanabe, M.: Clouds, circulation and climate sensitivity, *Nat. Geosci.*, 8, 261–268, <https://doi.org/10.1038/ngeo2398>, 2015.
- Carnuth, W., Kempfer, U., and Trickl, T.: Highlights of the tropospheric lidar studies at IFU within the TOR project, *Tellus B*, 54, 163–185, <https://doi.org/10.1034/j.1600-0889.2002.00245.x>, 2002.
- Christner, E.: Messungen von Wasserisotopologen von der planetaren Grenzschicht bis zur oberen Troposphäre zur Untersuchung des hydrologischen Kreislaufs, Ph.D. thesis, Karlsruhe Institute of Technology, Germany, 2015.
- Craig, H.: Standard for reporting concentrations of deuterium and oxygen-18 in natural waters, *Science*, 133, 1833–1834, 1961.
- Damoah, R., Spichtinger, N., Forster, C., James, P., Mattis, I., Wandinger, U., Beirle, S., Wagner, T., and Stohl, A.: Around the world in 17 days – hemispheric-scale transport of forest fire smoke from Russia in May 2003, *Atmos. Chem. Phys.*, 4, 1311–1321, <https://doi.org/10.5194/acp-4-1311-2004>, 2004.
- Dansgaard, W.: Stable isotopes in precipitation, *Tellus*, 16, 436–468, 1964.
- Deutscher Wetterdienst: ftp://ftp-cdc.dwd.de/pub/CDC/observations_germany/climate/hourly, last access: 10 January 2017.
- Eckhardt, S., Stohl, A., Wernli, H., James, P., Forster, C., and Spichtinger, N.: A 15-year climatology of warm conveyor belts, *J. Clim.*, 17, 218–237, 2004.
- Eisele, H., Scheel, H. E., Sladkovic, R., and Trickl, T.: High-Resolution Lidar Measurements of Stratosphere–Troposphere Exchange, *J. Atmos. Sci.*, 56, 319–330, [https://doi.org/10.1175/1520-0469\(1999\)056<0319:HRLMOS>2.0.CO;2](https://doi.org/10.1175/1520-0469(1999)056<0319:HRLMOS>2.0.CO;2), 1999.
- Engelstaedter, S., Tegen, I., and Washington, R.: North African dust emissions and transport, *Earth-Sci. Rev.*, 79, 73–100, <https://doi.org/10.1016/j.earscirev.2006.06.004>, 2006.
- Flentje, H., Briel, B., Beck, C., Coen, M. C., Fricke, M., Cyrus, J., Gu, J., Pitz, M., and Thomas, W.: Identification and monitoring of Saharan dust: an inventory representative for south Germany since 1997, *Atmos. Environ.*, 109, 87–96, <https://doi.org/10.1016/j.atmosenv.2015.02.023>, 2015.
- Forster, C., Wandinger, U., Wotawa, G., James, P., Mattis, I., Althausen, D., Simmonds, P., O'Doherty, S., Jennings, S. G., Kleefeld, C., and Schneider, J.: Transport of boreal forest fire emissions from Canada to Europe, *J. Geophys. Res.*, 106, 22887–22906, <https://doi.org/10.1029/2001JD900115>, 2001.
- Frankenberg, C., Wunch, D., Toon, G., Risi, C., Scheepmaker, R., Lee, J.-E., Wennberg, P., and Worden, J.: Water vapor isotopologue retrievals from high-resolution GOSAT short-wave infrared spectra, *Atmos. Meas. Tech.*, 6, 263–274, <https://doi.org/10.5194/amt-6-263-2013>, 2013.
- Fromm, M., Lindsey, D. T., Servranckx, R., Yue, G., Trickl, T., Sica, R., Doucet, P., and Godin-Beekmann, S.: The untold story of pyrocumulonimbus, *B. Am. Meteor. Soc.*, 91, 1193–1209, <https://doi.org/10.1175/2010BAMS3004.1>, 2010.
- Galewsky, J., Sobel, A., and Held, I.: Diagnosis of subtropical humidity dynamics using tracers of last saturation, *J. Atmos. Sci.*, 62, 3353–3367, 2005.
- Gardiner, T., Forbes, A., de Mazière, M., Vigouroux, C., Mahieu, E., Demoulin, P., Velazco, V., Notholt, J., Blumenstock, T., Hase, F., Kramer, I., Sussmann, R., Stremme, W., Mellqvist, J., Strandberg, A., Ellingsen, K., and Gauss, M.: Trend analysis of greenhouse gases over Europe measured by a network of ground-based remote FTIR instruments, *Atmos. Chem. Phys.*, 8, 6719–6727, <https://doi.org/10.5194/acp-8-6719-2008>, 2008.
- González, Y., Schneider, M., Dyroff, C., Rodríguez, S., Christner, E., García, O. E., Cuevas, E., Bustos, J. J., Ramos, R., Guirado-Fuentes, C., Barthlott, S., Wiegele, A., and Sepúlveda, E.: Detecting moisture transport pathways to the subtropical North Atlantic free troposphere using paired H_2O - δD in situ measurements, *Atmos. Chem. Phys.*, 16, 4251–4269, <https://doi.org/10.5194/acp-16-4251-2016>, 2016.
- Hanisco, T. F., Moyer, E. J., Weinstock, E. M., St Clair, J. M., Sayres, D. S., Smith, J. B., Lockwood, R., Anderson, J. G., Dessler, A. E., Keutsch, F. N., and Spackman, J. R.: Observations of deep convective influence on stratospheric water vapor and its isotopic composition, *Geophys. Res. Lett.*, 34, L04814, <https://doi.org/10.1029/2006GL027899>, 2007.
- Harries, J., Carli, B., Rizzi, R., Serio, C., Mlynarczyk, M., Palchetti, L., Maestri, T., Brindley, H., and Masiello, G.: The far-infrared Earth, *Rev. Geophys.*, 46, RG4004, <https://doi.org/10.1029/2007RG000233>, 2008.
- Hartmann, D. L., Klein Tank, A. M. G., Rusticucci, M., Alexander, L. V., Bronnimann, S., Charabi, Y., Dentener, F. J., Dlugokencky, E. J., Easterling, D. R., Kaplan, A., and et al.: Observations: Atmosphere and Surface, in: *Climate Change 2013: The Physical Science Basis. Contribution of Working Group I to the Fifth Assessment Report of the Intergovernmental Panel on Climate Change*, edited by: Stocker, T. F., Qin, D., Plattner, G.-K., Tignor, M., Allen, S. K., Boschung, J., Nauels, A., Xia, Y., Bex, V., and Midgley, P. M., Cambridge University Press, Cambridge, United Kingdom and New York, USA, 2013.
- Holloway, T., Fiore, A., and Hastings, M. G.: Intercontinental transport of air pollution: will emerging science lead to a new hemispheric treaty?, *Environ. Sci. Technol.*, 37, 4535–4542, 2003.

- Huntrieser, H. and Schlager, H.: Air pollution export from and import to Europe: Experimental evidence, in: *Intercontinental Transport of Air Pollution*, edited by: Stohl, A., Springer, Berlin, Germany, 69–98, <https://doi.org/10.1007/b10681>, 2004.
- Huntrieser, H., Heland, J., Schlager, H., Forster, C., Stohl, A., Aufmhoff, H., Arnold, F., Scheel, H. E., Campana, M., Gilge, S., Eixmann, R., and Cooper, O.: Intercontinental air pollution transport from North America to Europe: Experimental evidence from airborne measurements and surface observations, *J. Geophys. Res.*, 110, D01305, <https://doi.org/10.1029/2004JD005045>, 2005.
- Husar, R. B.: Intercontinental Transport of Dust: Historical and Recent Observational Evidence, in: *Intercontinental Transport of Air Pollution*, edited by: Stohl, A., Springer, Berlin, Germany, 277–294, <https://doi.org/10.1007/b10681>, 2004.
- Israelevich, P., Ganor, E., Alpert, P., Kishcha, P., and Stupp, A.: Predominant transport paths of Saharan dust over the Mediterranean Sea to Europe, *J. Geophys. Res.*, 117, D02205, <https://doi.org/10.1029/2011JD016482>, 2012.
- Itoh, H. and Narazaki, Y.: Fast descent routes from within or near the stratosphere to the surface at Fukuoka, Japan, studied using ^7Be measurements and trajectory calculations, *Atmos. Chem. Phys.*, 16, 6241–6261, <https://doi.org/10.5194/acp-16-6241-2016>, 2016.
- Jochner, S., Lüpke, M., Laube, J., Weichenmeier, I., Pusch, G., Traidl-Hoffmann, C., Schmidt-Weber, C., Buters, J. T. M., and Menzel, A.: Seasonal variation of birch and grass pollen loads and allergen release at two sites in the German Alps, *Atmos. Environ.*, 122, 83–93, <https://doi.org/10.1016/j.atmosenv.2015.08.031>, 2015.
- Kiehl, J. T. and Trenberth, K. E.: Earth's annual global mean energy budget, *B. Am. Meteorol. Soc.*, 78, 197–208, 1997.
- Lacour, J.-L., Risi, C., Clarisse, L., Bony, S., Hurtmans, D., Clerbaux, C., and Coheur, P.-F.: Mid-tropospheric δD observations from IASI/MetOp at high spatial and temporal resolution, *Atmos. Chem. Phys.*, 12, 10817–10832, <https://doi.org/10.5194/acp-12-10817-2012>, 2012.
- Lal, D. and Peters, B.: Cosmic ray produced radioactivity on the earth, in: *Kosmische Strahlung II / Cosmic Rays II*, edited by: Sitte, K., Springer, Berlin, Germany, 551–612, https://doi.org/10.1007/978-3-642-46079-1_7, 1967.
- Lefohn, A. S., Wernli, H., Shadwick, D., Oltmans, S. J., and Shapiro, M.: Quantifying the importance of stratospheric-tropospheric transport on surface ozone concentrations at high- and low-elevation monitoring sites in the United States, *Atmos. Environ.*, 62, 646–656, <https://doi.org/10.1016/j.atmosenv.2012.09.004>, 2012.
- Lin, M., Fiore, A. M., Cooper, O. R., Horowitz, L. W., Langford, A. O., Levy II, H., Johnson, B. J., Naik, V., Oltmans, S. J., and Senff, C. J.: Springtime high surface ozone events over the western United States: Quantifying the role of stratospheric intrusions, *J. Geophys. Res.*, 117, D00V22, <https://doi.org/10.1029/2012JD018151>, 2012.
- Madonna, E., Wernli, H., Joos, H., and Martius, O.: Warm conveyor belts in the ERA-Interim dataset (1979–2010). Part I: Climatology and potential vorticity evolution, *J. Clim.*, 27, 3–26, <https://doi.org/10.1175/JCLI-D-12-00720.1>, 2014.
- Noone, D.: Pairing measurements of the water vapor isotope ratio with humidity to deduce atmospheric moistening and dehydration in the tropical midtroposphere, *J. Clim.*, 25, 4476–4494, <https://doi.org/10.1175/JCLI-D-11-00582.1>, 2012.
- Noone, D., Galewsky, J., Sharp, Z. D., Worden, J., Barnes, J., Baer, D., Bailey, A., Brown, D. P., Christensen, L., Crosson, E., Dong, F., Hurley, J., Johnson, L., Strong, M., Toohey, D., Van Pelt, A., and Wright, J.: Properties of air mass mixing and humidity in the subtropics from measurements of the D/H isotope ratio of water vapor at the Mauna Loa Observatory, *J. Geophys. Res.*, 116, D22113, <https://doi.org/10.1029/2011JD015773>, 2011.
- Ott, L. E., Duncan, B. N., Thompson, A. M., Diskin, G., Fasnacht, Z., Langford, A. O., Lin, M., Molod, A. M., Nielsen, J. E., Pusede, S. E., Wargan, K., Weinheimer, A. J., and Yoshida, Y.: Frequency and impact of summertime stratospheric intrusions over Maryland during DISCOVER-AQ (2011): New evidence from NASA's GEOS-5 simulations, *J. Geophys. Res.-Atmos.*, 121, 3687–3706, <https://doi.org/10.1002/2015JD024052>, 2016.
- Papayannis, A., Amiridis, V., Mona, L., Tsaknakis, G., Balis, D., Bösenberg, J., Chaikovski, A., De Tomasi, F., Grigorov, I., Mattis, I., Mitev, V., Müller, D., Nickovic, S., Pérez, C., Pietruczuk, A., Pisani, G., Ravetta, F., Rizi, V., Sicard, M., Trickl, T., Wiegner, M., Gerding, M., Mamouri, R. E., D'Amico, G., and Pappalardo, G.: Systematic lidar observations of Saharan dust over Europe in the frame of EARLINET (2000–2002), *J. Geophys. Res.*, 113, D10204, <https://doi.org/10.1029/2007JD009028>, 2008.
- Randel, W. J., Moyer, E., Park, M., Jensen, E., Bernath, P., Walker, K., and Boone, C.: Global variations of HDO and HDO/H₂O ratios in the upper troposphere and lower stratosphere derived from ACE-FTS satellite measurements, *J. Geophys. Res.*, 117, D06303, <https://doi.org/10.1029/2011JD016632>, 2012.
- Ravishankara, A. R.: Heterogeneous and multiphase chemistry in the troposphere, *Science*, 276, 1058–1065, 1997.
- Risi, C., Noone, D., Worden, J., Frankenberg, C., Stiller, G., Kiefer, M., Funke, B., Walker, K., Bernath, P., Schneider, M., and Wunch, D.: Process-evaluation of tropospheric humidity simulated by general circulation models using water vapor isotopologues: 1. Comparison between models and observations, *J. Geophys. Res.*, 117, D05303, <https://doi.org/10.1029/2011JD016621>, 2012.
- Schneider, M., Barthlott, S., Hase, F., González, Y., Yoshimura, K., García, O. E., Sepúlveda, E., Gomez-Pelaez, A., Gisi, M., Kohlhepp, R., Dohe, S., Blumenstock, T., Wiegele, A., Christner, E., Strong, K., Weaver, D., Palm, M., Deutscher, N. M., Warneke, T., Notholt, J., Lejeune, B., Demoulin, P., Jones, N., Griffith, D. W. T., Smale, D., and Robinson, J.: Ground-based remote sensing of tropospheric water vapour isotopologues within the project MUSICA, *Atmos. Meas. Tech.*, 5, 3007–3027, <https://doi.org/10.5194/amt-5-3007-2012>, 2012.
- Schneider, M., Demoulin, P., Sussmann, R., and Notholt, J.: Fourier Transform Infrared Spectrometry, in: *Monitoring Atmospheric Water Vapour*, ISSI Scientific Report Series 10, edited by: Kämpfer, N., Springer, New York, 95–111, https://doi.org/10.1007/978-1-4614-3909-7_6, 2013.
- Schneider, M., González, Y., Dyroff, C., Christner, E., Wiegele, A., Barthlott, S., García, O. E., Sepúlveda, E., Hase, F., Andrey, J., Blumenstock, T., Guirado, C., Ramos, R., and Rodríguez, S.: Empirical validation and proof of added value of MUSICA's tropospheric δD remote sensing products, *Atmos. Meas. Tech.*, 8, 483–503, <https://doi.org/10.5194/amt-8-483-2015>, 2015.

- Schneider, M. and Hase, F.: Optimal estimation of tropospheric H_2O and δD with IASI/METOP, *Atmos. Chem. Phys.*, 11, 11207–11220, <https://doi.org/10.5194/acp-11-11207-2011>, 2011.
- Schneider, M., Wiegele, A., Barthlott, S., González, Y., Christner, E., Dyroff, C., García, O. E., Hase, F., Blumenstock, T., Sepúlveda, E., Mengistu Tsidu, G., Takele Kenea, S., Rodríguez, S., and Andrey, J.: Accomplishments of the MUSICA project to provide accurate, long-term, global and high-resolution observations of tropospheric $\{H_2O, \delta D\}$ pairs – a review, *Atmos. Meas. Tech.*, 9, 2845–2875, <https://doi.org/10.5194/amt-9-2845-2016>, 2016.
- Schneider, T., O’Gorman, P. A., and Levine, X. J.: Water vapor and the dynamics of climate changes, *Rev. Geophys.*, 48, RG3001, <https://doi.org/10.1029/2009RG000302>, 2010.
- Schuepbach, E., Davies, T. D., Massacand, A. C., and Wernli, H.: Mesoscale modelling of vertical atmospheric transport in the Alps associated with the advection of a tropopause fold – a winter ozone episode, *Atmos. Environ.*, 33, 3613–3626, [https://doi.org/10.1016/S1352-2310\(99\)00103-X](https://doi.org/10.1016/S1352-2310(99)00103-X), 1999.
- Škerlak, B., Sprenger, M., and Wernli, H.: A global climatology of stratosphere-troposphere exchange using the ERA-Interim data set from 1979 to 2011, *Atmos. Chem. Phys.*, 14, 913–937, <https://doi.org/10.5194/acp-14-913-2014>, 2014.
- Stein, A. F., Draxler, R. R., Rolph, G. D., Stunder, B. J. B., Cohen, M. D., and Ngan, F.: NOAA’s HYSPLIT atmospheric transport and dispersion modeling system, *B. Am. Meteor. Soc.*, 96, 2059–2077, <https://doi.org/10.1175/BAMS-D-14-00110.1>, 2015.
- Steinwagner, J., Fueglistaler, S., Stiller, G., von Clarmann, T., Kiefer, M., Borsboom, P. P., van Delden, A., and Röckmann, T.: Tropical dehydration processes constrained by the seasonality of stratospheric deuterated water, *Nat. Geosci.*, 3, 262–266, <https://doi.org/10.1038/ngeo822>, 2010.
- Stephens, G. L., Li, J., Wild, M., Clayson, C. A., Loeb, N., Kato, S., L’Ecuyer, T., Stackhouse Jr., P. W., Lebsock, M., and Andrews, T.: An update on Earth’s energy balance in light of the latest global observations, *Nat. Geosci.*, 5, 691–696, <https://doi.org/10.1038/NGEO1580>, 2012.
- Stohl, A.: Computation, accuracy and applications of trajectories—a review and bibliography, *Atmos. Environ.*, 32, 947–966, 1998.
- Stohl, A.: A 1-year Lagrangian “climatology” of airstreams in the Northern Hemisphere troposphere and lowermost stratosphere, *J. Geophys. Res.*, 106, 7263–7279, <https://doi.org/10.1029/2000JD900570>, 2001.
- Stohl, A. and Trickl, T.: A textbook example of long-range transport: Simultaneous observation of ozone maxima of stratospheric and North American origin in the free troposphere over Europe, *J. Geophys. Res.*, 104, 30445–30462, 1999.
- Stohl, A., Spichtinger-Rakowsky, N., Bonasoni, P., Feldmann, H., Memmesheimer, M., Scheel, H. E., Trickl, T., Hübener, S., Ringer, W., and Mandl, M.: The influence of stratospheric intrusions on alpine ozone concentrations, *Atmos. Environ.*, 34, 1323–1354, [https://doi.org/10.1016/S1352-2310\(99\)00320-9](https://doi.org/10.1016/S1352-2310(99)00320-9), 2000.
- Stohl, A., Eckhardt, S., Forster, C., James, P., and Spichtinger, N.: On the pathways and timescales of intercontinental air pollution transport, *J. Geophys. Res.*, 107, 4684, <https://doi.org/10.1029/2001JD001396>, 2002.
- Stohl, A., Bonasoni, P., Cristofanelli, P., Collins, W., Feichter, J., Frank, A., Forster, C., Gerasopoulos, E., Gäggeler, H., James, P., and Kentarchos, T.: Stratosphere-troposphere exchange: A review, and what we have learned from STACCATO, *J. Geophys. Res.*, 108, 8516, <https://doi.org/10.1029/2002JD002490>, 2003.
- Strong, M., Sharp, Z. D., and Gutzler, D. S.: Diagnosing moisture transport using D / H ratios of water vapor, *Geophys. Res. Lett.*, 34, L03404, <https://doi.org/10.1029/2006GL028307>, 2007.
- Sussmann, R. and Schäfer, K.: Infrared spectroscopy of tropospheric trace gases: combined analysis of horizontal and vertical column abundances, *Appl. Opt.*, 36, 735–741, 1997.
- Sussmann, R., Borsdorff, T., Rettinger, M., Camy-Peyret, C., Demoulin, P., Duchatelet, P., Mahieu, E., and Servais, C.: Technical Note: Harmonized retrieval of column-integrated atmospheric water vapor from the FTIR network – first examples for long-term records and station trends, *Atmos. Chem. Phys.*, 9, 8987–8999, <https://doi.org/10.5194/acp-9-8987-2009>, 2009.
- Sutanto, S. J., Hoffmann, G., Scheepmaker, R. A., Worden, J., Houweling, S., Yoshimura, K., Aben, I., and Röckmann, T.: Global-scale remote sensing of water isotopologues in the troposphere: representation of first-order isotope effects, *Atmos. Meas. Tech.*, 8, 999–1019, <https://doi.org/10.5194/amt-8-999-2015>, 2015.
- TF-HTAP (Task Force on Hemispheric Transport of Air Pollution): Hemispheric Transport of Air Pollution 2010, Part A: Ozone and Particulate Matter, Air Pollution Studies No. 17, edited by: Dentener, F., Keating, T., and Akimoto, H., United Nations, Geneva, Switzerland, 2010.
- Trickl, T., Cooper, O. R., Eisele, H., James, P., Mücke, R., and Stohl, A.: Intercontinental transport and its influence on the ozone concentrations over central Europe: Three case studies, *J. Geophys. Res.*, 108, 8530, <https://doi.org/10.1029/2002JD002735>, 2003.
- Trickl, T., Feldmann, H., Kanter, H.-J., Scheel, H.-E., Sprenger, M., Stohl, A., and Wernli, H.: Forecasted deep stratospheric intrusions over Central Europe: case studies and climatologies, *Atmos. Chem. Phys.*, 10, 499–524, <https://doi.org/10.5194/acp-10-499-2010>, 2010.
- Trickl, T., Bärtsch-Ritter, N., Eisele, H., Furger, M., Mücke, R., Sprenger, M., and Stohl, A.: High-ozone layers in the middle and upper troposphere above Central Europe: potential import from the stratosphere along the subtropical jet stream, *Atmos. Chem. Phys.*, 11, 9343–9366, <https://doi.org/10.5194/acp-11-9343-2011>, 2011.
- Trickl, T., Giehl, H., Jäger, H., and Vogelmann, H.: 35 yr of stratospheric aerosol measurements at Garmisch-Partenkirchen: from Fuego to Eyjafjallajökull, and beyond, *Atmos. Chem. Phys.*, 13, 5205–5225, <https://doi.org/10.5194/acp-13-5205-2013>, 2013.
- Trickl, T., Vogelmann, H., Giehl, H., Scheel, H.-E., Sprenger, M., and Stohl, A.: How stratospheric are deep stratospheric intrusions?, *Atmos. Chem. Phys.*, 14, 9941–9961, <https://doi.org/10.5194/acp-14-9941-2014>, 2014.
- Trickl, T., Vogelmann, H., Flentje, H., and Ries, L.: Stratospheric ozone in boreal fire plumes – the 2013 smoke season over central Europe, *Atmos. Chem. Phys.*, 15, 9631–9649, <https://doi.org/10.5194/acp-15-9631-2015>, 2015.
- Trickl, T., Vogelmann, H., Fix, A., Schäfler, A., Wirth, M., Calpini, B., Levrat, G., Romanens, G., Apituley, A., Wilson, K. M., Begbie, R., Reichardt, J., Vömel, H., and Sprenger, M.: How stratospheric are deep stratospheric intrusions? LUAMI 2008, At-

- mos. Chem. Phys., 16, 8791–8815, <https://doi.org/10.5194/acp-16-8791-2016>, 2016.
- Vogelmann, H., Sussmann, R., Trickl, T., and Reichert, A.: Spatiotemporal variability of water vapor investigated using lidar and FTIR vertical soundings above the Zugspitze, Atmos. Chem. Phys., 15, 3135–3148, <https://doi.org/10.5194/acp-15-3135-2015>, 2015.
- Wiegele, A., Schneider, M., Hase, F., Barthlott, S., García, O. E., Sepúlveda, E., González, Y., Blumenstock, T., Raffalski, U., Gisi, M., and Kohlhepp, R.: The MUSICA MetOp/IASI H_2O and δD products: characterisation and long-term comparison to NDACC/FTIR data, Atmos. Meas. Tech., 7, 2719–2732, <https://doi.org/10.5194/amt-7-2719-2014>, 2014.
- Wild, M., Folini, D., Schär, C., Loeb, N., Dutton, E. G., and König-Langlo, G.: The global energy balance from a surface perspective, Clim. Dyn., 40, 3107–3134, <https://doi.org/10.1007/s00382-012-1569-8>, 2013.
- Worden, J., Bowman, K., Noone, D., Beer, R., Clough, S., Eldering, A., Fisher, B., Goldman, A., Gunson, M., Herman, R., Kulawik, S. S., Lampel, M., Luo, M., Osterman, G., Rinsland, C., Rodgers, C., Sander, S., Shephard, M., and Worden, H.: Tropospheric Emission Spectrometer observations of the tropospheric $\text{HDO}/\text{H}_2\text{O}$ ratio: Estimation approach and characterization, J. Geophys. Res., 111, D16309, <https://doi.org/10.1029/2005JD006606>, 2006.
- Worden, J., Noone, D., Bowman, K., Beer, R., Eldering, A., Fisher, B., Gunson, M., Goldman, A., Herman, R., Kulawik, S. S., and Lampel, M.: Importance of rain evaporation and continental convection in the tropical water cycle, Nature, 445, 528–532, <https://doi.org/10.1038/nature05508>, 2007.
- Wotawa, G., Novelli, P. C., Trainer, M., and Granier, C.: Interannual variability of summertime CO concentrations in the Northern Hemisphere explained by boreal forest fires in North America and Russia, Geophys. Res. Lett., 28, 4575–4578, <https://doi.org/10.1029/2001GL013686>, 2001.
- Zahn, A., Franz, P., Bechtel, C., Grooß, J.-U., and Röckmann, T.: Modelling the budget of middle atmospheric water vapour isotopes, Atmos. Chem. Phys., 6, 2073–2090, <https://doi.org/10.5194/acp-6-2073-2006>, 2006.