

Using Jacobi Iterations and Blocking for Solving Sparse Triangular Systems in Incomplete Factorization Preconditioning

Edmond Chow^{a,*}, Hartwig Anzt^{b,c}, Jennifer Scott^d, Jack Dongarra^{c,e,f}

^a*School of Computational Science and Engineering, Georgia Institute of Technology, USA*

^b*Steinbuch Centre for Computing, Karlsruhe Institute of Technology, Germany*

^c*Innovative Computing Laboratory, University of Tennessee, USA*

^d*Scientific Computing Department, STFC Rutherford Appleton Laboratory, UK*

^e*School of Mathematics and School of Computer Science, University of Manchester, UK*

^f*Oak Ridge National Laboratory, USA*

Abstract

When using incomplete factorization preconditioners with an iterative method to solve large sparse linear systems, each application of the preconditioner involves solving two sparse triangular systems. These triangular systems are challenging to solve efficiently on computers with high levels of concurrency. On such computers, it has recently been proposed to use Jacobi iterations, which are highly parallel, to approximately solve the triangular systems from incomplete factorizations. The effectiveness of this approach, however, is problem-dependent: the Jacobi iterations may not always converge quickly enough for all problems. Thus, as a necessary and important step to evaluate this approach, we experimentally test the approach on a large number of realistic symmetric positive definite problems. We also show that by using *block* Jacobi iterations, we can extend the range of problems for which such an approach can be effective. For block Jacobi iterations, it is essential for the blocking to be cognizant of the matrix structure.

Keywords: sparse linear systems, triangular solves, iterative solvers, preconditioning.

1. Introduction

As computers increasingly rely on various forms of parallelism to obtain high performance, the design and performance optimization of large-scale numerical algorithms must focus on the efficient exploitation of parallel architectures. Unfortunately, simple algorithms frequently become remarkably complex when implemented in parallel and the most efficient parallel algorithm may not be the one that is most intuitive.

In this paper, we investigate a non-intuitive approach to solving the sparse triangular systems that arise when using incomplete factorization preconditioners with an

*Corresponding author

Email addresses: echow@cc.gatech.edu (Edmond Chow), hanzt@icl.utk.edu (Hartwig Anzt), jennifer.scott@stfc.ac.uk (Jennifer Scott), dongarra@icl.utk.edu (Jack Dongarra)

iterative method for solving sparse linear systems. The conventional method of solving
10 triangular systems is to use forward or backward substitution and this can be paral-
lelized using level scheduling [1, 2, 3, 4, 5]. Here we investigate using an iterative
method—in particular, Jacobi relaxation. The use of an iterative method is feasible
when an approximate solution is acceptable, as in the case of preconditioning. The
approach is less applicable to the case of solving with factors from a direct (not incom-
15 plete) factorization where the factors are much less sparse and typically an exact solve
is desired.

In recent previous work, this approach demonstrated significant reductions in total
solution time for the preconditioned conjugate gradient (PCG) method on highly par-
20 allel architectures such as Intel Xeon Phi co-processors and graphics processing units
(GPUs) [6, 7], even though additional PCG iterations may be required to achieve the
requested accuracy. The improved speed for each triangular solve is because, for some
problems, particularly with high levels of fill in the triangular factors, level scheduling
is unable to reveal sufficient parallelism to fully exploit the GPU hardware. On the
other hand, Jacobi relaxation, which primarily relies on the sparse matrix vector prod-
25 uct (SpMV) operation to compute a residual vector, is highly parallel and can exploit
the substantial efforts that have been invested in optimizing SpMV on various parallel
architectures.

Although the iterative triangular solve approach can result in significant speedups
on highly parallel architectures, the approach does not work on all problems. It is pos-
30 sible for the iterations on the triangular systems to converge too slowly and thus be
uncompetitive with the conventional level-scheduled approach. The goal of this paper
is to investigate the range of applicability of using iterative triangular solves for incom-
plete factorization preconditioning by testing it with a large set of sparse symmetric
positive definite linear systems. Further, we introduce the idea of using block Jacobi
35 iterations,¹ which improves the robustness of the iterative approach. Our hypothesis is
that for matrices that model many types of physical systems, especially partial differ-
ential equations, an iterative approach to solving the systems involving its triangular
factors can be effective. In particular, although these matrices may not be diagonally
dominant and may be ill-conditioned, many have *relatively* large diagonal entries com-
40 pared to the off-diagonal entries. If the incomplete factorizations of these matrices
are stable, they are also likely to have relatively large diagonal entries. Systems with
such matrices can typically be solved efficiently by iterative methods. If convergence
is poor, a block diagonal scaling can improve diagonal dominance.

Alternatives to sparse triangular solves for incomplete factorization precondition-
45 ing have been proposed before. One major alternative is to compute and use sparse ap-
proximate inverses of the incomplete factors, so that preconditioning reduces to SpMV
operations [8, 9]. Related to this is representing the inverse of a sparse triangular ma-
trix as the product of sparse triangular factors [10, 11]. Another possible approach is
to use Neumann series approximations to the inverse of the incomplete factors [8, 12].
50 Preconditioning is again reduced to a sequence of SpMV operations. This approach

¹Initial ideas were presented orally at the 2015 SIAM Conference on Computational Science and Engi-
neering.

was found to be potentially competitive with other techniques for nonsymmetric problems but it lacks robustness, while for symmetric problems a number of more efficient alternatives are available [8]. The Neumann series technique is the same as the Jacobi relaxation approach investigated here if a diagonal scaling is first applied to the system in the former. Recently, based on the encouraging results in [7] for using Jacobi iterations to solve triangular systems, Huckle and coauthors [13] have suggested the use of stationary iterations for solving sparse triangular systems based on sparse approximate inverses.

In the symmetric case, the amount of parallelism in level-scheduled sparse triangular solves can be increased by using multicolor reordering of the rows and columns of the original matrix and computing the incomplete Cholesky factors of this reordered matrix [14]. However, multicolor reorderings generally give poorer PCG convergence results compared to other orderings such as the band reducing RCM ordering [15] or profile reducing Sloan ordering [16] (see, for example, [17, 18, 19, 20, 21, 22]). For some “easy” problems, the convergence rate may be degraded by as much as 60 to 100% but this can be compensated for by the additional parallelism in the solves. For harder problems, however, multicolor reorderings may result in no convergence.

The rest of this paper is organized as follows. In Section 2, we describe the use of Jacobi and block Jacobi relaxation for the iterative solution of triangular systems. In particular, various blocking strategies are reviewed. Section 3 presents our experimental study and demonstrates the potential effectiveness of Jacobi and block Jacobi solves using a large set of test problems. Concluding remarks are made in Section 4.

2. Background and Methodology

2.1. Jacobi and block Jacobi relaxation for triangular systems

Consider a triangular system of equations

$$Ry = c, \tag{1}$$

where R is either upper or lower triangular. In our application in which we want to solve the system $Ax = b$, R is an incomplete factor of A and, in particular, in the symmetric case, $R = L$ or L^T , where L is an incomplete Cholesky factor of A . The Jacobi iteration for solving (1) is

$$y_{k+1} = y_k + D^{-1}(c - Ry_k), \tag{2}$$

where D is the diagonal of R . For the sparse triangular solves, we take the initial guess

$$y_0 = D^{-1}c. \tag{3}$$

We will refer to the number of Jacobi iterations performed as the number of *Jacobi sweeps*. The iteration matrix

$$G = I - D^{-1}R \tag{4}$$

is strictly triangular with a zero diagonal. Thus the iteration is guaranteed to converge. However, in practice, because G is triangular and thus non-normal, the iteration may diverge before converging. If this initial divergence stage is long and/or causes numerical

overflow, then using Jacobi iterations will not be an effective method of solution. Thus effectiveness will depend on the degree of non-normality of G . Non-normality can be measured in different ways. For triangular matrices, having only small off-diagonal entries results in a small departure from non-normality.

90 Block Jacobi relaxation or, equivalently, block scaling of R , can reduce non-normality. If a block structure is imposed on R then it can be trivially written as the sum

$$R = \tilde{R} + D, \tag{5}$$

where \tilde{R} is strictly block triangular and D is now block diagonal with i -th block D_{ii} . The iteration is the same as in (2), where the i -th block row of the iteration matrix (4) now has off-diagonal blocks $G_{ij} = D_{ii}^{-1}R_{ij}$ ($j \neq i$). If the norm of D_{ii}^{-1} is small, then
 95 the norm of the off-diagonal blocks will be small, as desired. As a proxy, we will seek to maximize the size of the entries in the diagonal blocks of A . This blocking for A is then imposed on the lower and upper triangular incomplete factors.

Observe that, in general, we seek a blocking in which the block size is small compared to the order n of A so as to limit the cost of applying block Jacobi. With small
 100 blocks, the cost of block Jacobi is not significantly greater than for scalar Jacobi because the main cost in both is the computation of the residual $c - Ry_k$. For small blocks, one possibility to assist with efficiency is to store the inverses D_{ii}^{-1} explicitly. We also note that the matrix $D^{-1}R$ is not formed, as this may require more storage than storing D^{-1} and R separately.

105 2.2. Blocking vs. reordering

The most general form of blocking involves two steps: (1) identifying rows (or columns) of a matrix that should be grouped together into a “block,” and then (2) reordering the matrix such that the rows within each block are numbered consecutively. (We use the term “block” to mean either a *group* of rows or columns (or their indices),
 110 or a *submatrix* of a matrix; the meaning should be clear from the context.) For symmetric matrices, the rows and columns are reordered the same way. It is known, however, that reordering a matrix affects the quality of its incomplete factorization, and that some orderings, such as RCM, are better than others when these factorizations are used as preconditioners. Arbitrary blockings (and thus reorderings) of a matrix can lead to a
 115 failure of the incomplete factorization [23].

Blocking, however, may not require the first reordering step, and these cases should be distinguished from the general case. For a matrix that already has a desired ordering, it is possible to group consecutively numbered rows (and columns) together. The simplest way to impose such a blocking is to divide the rows into the requested number
 120 of blocks such that each block contains (approximately) the same number of rows. A locality-preserving band or profile reducing ordering, such as RCM or Sloan, permutes nonzero entries of the matrix close to the diagonal of the matrix, and thus these entries are likely to lie in the block diagonal part of the reordered matrix.

In this paper, we use a simple blocking technique that we call *supervariable amalgamation*, which is described in the next subsection. For completeness, we also briefly
 125 mention other blocking techniques.

2.3. Supervariable blocking and supervariable amalgamation

The set of variables that correspond to a set of matrix columns with the same sparsity pattern is called a *supervariable*. Supervariables occur frequently as a result of each node or element of a partial differential equation (PDE) discretization having multiple variables or degrees of freedom associated with it. These variables are typically tightly coupled, leading to dense diagonal blocks with large norm.

If a matrix has a supervariable structure, then it is natural to associate each supervariable with a block. Assuming that the variables in a supervariable are numbered consecutively, then this blocking does not require reordering the matrix. If blocks larger than the size of the supervariables are desired, then larger blocks can be formed by amalgamating supervariables.

When amalgamating adjacent supervariables, it is important that these supervariables represent adjacent or nearby nodes or elements in the PDE mesh. This is because there is no advantage in grouping variables together that are not coupled within the block. To help ensure that adjacent supervariables are coupled, the matrix should be ordered so that variables that are close in the ordering are nearby in the PDE mesh. This can be accomplished by applying a locality-preserving ordering to the supervariable structure (called the *condensed graph*) before the supervariables are amalgamated. Fortunately, as already observed, locality-preserving orderings such as RCM are also beneficial for incomplete factorization preconditioners.

In this paper, instead of identifying a supervariable structure and then applying RCM ordering to that structure, we simply apply RCM ordering to the original rows and columns of the matrix before identifying supervariables. RCM ordering tends to preserve any existing supervariable structure because variables belonging to a supervariable will tend to stay numbered together.

The input to the supervariable amalgamation algorithm is the sparsity pattern of a matrix that has been reordered using RCM. The supervariable structure is found by comparing the sparsity patterns of adjacent matrix columns. Supervariables are then amalgamated into blocks with a given maximum block size m by merging adjacent supervariables. The algorithm does not alter the ordering of the matrix and only outputs the grouping of consecutive rows and columns into blocks. We note that when identifying supervariables, if there are supervariable blocks that are larger than the maximum allowed block size, then these blocks are recursively divided until the block size limit is satisfied.

When identifying supervariables, techniques based on hashing are available to rapidly determine if the structure of two columns differ [24, 25] (further discussion of efficient algorithms for identifying supervariables is given in [26]). In some cases, two columns may be associated to different variables at the same PDE grid point, but may not have identical structure because of numerical zero values in the columns. In this case, approximate matching of column structures can be useful, and the “cosine” between the structure of two columns can be checked [25]. In this paper, however, we use exact matching to identify supervariables. (In general, the cosine technique can be used to identify variables that are “near” one another; however, we use the simpler RCM algorithm for this.)

2.4. Other blocking techniques

Many blocking techniques can be interpreted as graph partitioning. A sparse matrix can be associated with a graph, where the matrix rows or columns (in the symmetric case) are identified with graph *nodes*, and nonzeros are identified with graph *edges*.
175 Graph-based approaches can be used to find a blocking of a sparse matrix, where each block corresponds to a partition of the graph nodes. Usually, the partitions of the graph are contiguous, and thus the nodes in the same partition are nearby in the graph. Graph partitioning techniques minimize the number of edges shared between partitions, which corresponds to minimizing the number of nonzeros that fall outside the diagonal
180 block structure being created. This is in contrast to supervariable amalgamation, where the number of nonzero entries outside the diagonal block structure is not explicitly minimized.

Graph-based approaches generally block together matrix rows and columns that are not necessarily numbered together; therefore, reordering the matrix is necessary.
185 However, the ordering of the blocks is not specified by a graph partitioning. If an ordering to produce an accurate incomplete factorization is desired, then it can be effective to order the block structure (the condensed graph) using RCM or the Sloan algorithm, especially if the block sizes are small. The ordering of the variables within blocks is also flexible; one choice is to order the variables within a block in ascending order of
190 their original numbering.

Graph partitioning approaches, e.g., the package METIS [27], typically partition a coarse version of the graph, and then uncoarsen and refine the partitioning over several stages called levels. When large numbers of small partitions are desired (as in our
195 case where the partitions are often so small that the corresponding diagonal blocks are almost dense) then the original graph cannot be coarsened too far, and the quality of the result depends highly on the quality of the partitioning of the coarsest version of the graph.

A different graph-based blocking approach is used by PABLO (parametrized block ordering) [28, 29], which is designed for block Jacobi and block Gauss–Seidel pre-
200 conditioning. Here, blocks are constructed one-by-one. A block initially consists of a single node. Additional nodes are added to the block if they satisfy a “fullness” criterion (maximizing the number of connections between nodes in the same block) or a “connectivity” criterion (minimizing the number of connections between blocks) until a maximum block size is reached.

All the algorithms we have described so far utilize only the structure of the sparse
205 matrix, and not its values. More effective methods may be constructed if values are also considered, explicitly placing large entries in the block diagonal portion of the blocked matrix. METIS can partition graphs with weighted edges by minimizing weighted edge cuts. Edge weights may be defined as being proportional to the absolute values of
210 the corresponding off-diagonal matrix entries. PABLO has been extended to TPABLO (threshold PABLO) and the family of PABLO algorithms is implemented as the package XPABLO [28]. TPABLO uses a threshold on the magnitude of the nonzeros in a matrix when applying its fullness and connectivity criteria. All nonzeros above the threshold are treated equally, while those below the threshold are discounted. A possible
215 disadvantage of TPABLO is that it does not prioritize a large nonzero over a smaller nonzero if they are both above or below the threshold.

A blocking algorithm sensitive to matrix values that does not use a threshold is the HDPRE algorithm of Duff and Kaya [30]. A block diagonal structure is generated by considering the nonzero values in decreasing order of their size. The HDPRE algorithm is designed for matrices with nonsymmetric structure and utilizes the idea of partitioning a graph such that each subcomponent is strongly connected [31]. For our symmetric positive definite test problems, we use a much simpler version of the algorithm, which we call *priority blocking* that we describe next.

2.5. Priority blocking algorithms

In priority blocking, a block is identified by a set of graph nodes. Initially, each graph node corresponds to a block or set of size 1. Each nonzero or graph edge considered creates a new diagonal block, to which the nonzero will belong, by merging two existing blocks, unless the resulting block exceeds a prescribed maximum size. By considering nonzeros in decreasing order of their size, large nonzeros are effectively placed into the diagonal block structure before small nonzeros.

The priority blocking algorithm is specified as Algorithm 1. For efficiency, a priority queue, implemented as a heap, is used to select the nonzeros in order of decreasing size. The algorithm provides a blocking but does not specify an ordering. As for other graph-based blocking approaches, RCM ordering can be applied to the condensed graph.

The priority blocking algorithm with *dynamic edge weights* is specified in Algorithm 2. This algorithm attempts to improve the priority blocking algorithm by adjusting the edge weights (absolute value of the corresponding nonzero element) when blocks are merged. Consider edge (i, j) where node i belongs to set S_{l_i} and node j belongs to set S_{l_j} . Also assume that there exists a node k such that edges (i, k) and (j, k) exist in the graph but have yet to be considered by the priority blocking algorithm. When sets S_{l_i} and S_{l_j} are merged, then the edges (i, k) and (j, k) collapse into a single edge between node k and the newly created block. The new edge replaces the collapsed edges and has weight equal to the sum of the weights of the edges it replaces. This technique is analogous to graph coarsening (see, for example, [27]).

Again, a priority queue, implemented as a heap, is used to store and extract the edges in the graph. When a new edge replaces two or more collapsed edges, one of these edges has its weight increased and the other edges are removed. This entails updating the heap data structure. Although increasing the priority of an item in a heap can be done efficiently, in time proportional to \log_2 of the number of elements in the heap, not all priority queues implement this operation. In this case, we can simply add the edge with the updated weight to the heap. The extra edges (with smaller weights) will be removed from the heap in turn, but will have no effect on the result of the algorithm. The least scalable component of the priority blocking algorithms is choosing the edge with the largest weight. This cost is $O(n_z \log_2 n_z)$ when a heap is used, where n_z is the number of nonzeros in the matrix.

3. Results and Discussion

Our goal in this paper is to test the use of iterative methods for approximately solving the triangular systems that arise when an incomplete Cholesky factorization is

Algorithm 1 Priority blocking. The input to the algorithm is a symmetric positive definite matrix $A = \{a_{ij}\}$ and a maximum block size m . The output is a set of blocks, where each block is a set of graph nodes (i.e., row or column indices). Each node is always in exactly one block. A label l_i maps a node i to a block index. We use $|S|$ to denote the number of elements in set S .

```

Initialize blocks:  $S_i = \{i\}, 1 \leq i \leq n$ 
Initialize labels:  $l_i = i, 1 \leq i \leq n$ 
Initialize heap: for all  $a_{ij} \neq 0, i < j$ , add  $(i, j)$  to heap  $H$  with priority  $|a_{ij}| / \sqrt{a_{ii}a_{jj}}$ 
while  $H$  is not empty do
     $(i, j) = \text{remove\_largest}(H)$ 
    if  $|S_{l_i}| + |S_{l_j}| \leq m$  then
         $l_k = i$  for all  $k \in S_{l_j}$ 
         $S_{l_i} = \text{merge}(S_{l_i}, S_{l_j})$ 
         $S_{l_j} = \emptyset$ 
    end if
end while
print  $S_i$  for all  $|S_i| > 0$ 

```

260 used as a preconditioner in PCG. We are interested in assessing the overall effectiveness of both scalar Jacobi and block Jacobi methods. For the latter, we briefly examine the use of alternative blocking strategies.

In our numerical experiments, we use symmetric positive definite matrices from the SuiteSparse Matrix Collection [32]. For the results reported in this paper, RCM 265 ordering is used unless indicated otherwise. Each test matrix A is scaled on the left and right by a diagonal matrix whose j -th diagonal entry is the reciprocal square root of the 2-norm of column j of A . We use $\text{IC}(k)$ ($k = 0, 1$) to denote an incomplete Cholesky factorization of level k ; $\text{IC}(k)$ -PCG denotes PCG with $\text{IC}(k)$ preconditioning. For each matrix, we use $\text{IC}(k)$ -PCG to solve a system of equations where the right-hand side 270 vector is the vector of all ones. The initial approximation to the solution is the zero vector. $\text{IC}(k)$ -PCG is considered to have converged when the residual 2-norm relative to the initial residual 2-norm is less than 10^{-6} .

Timings (all reported in seconds) are collected using an NVIDIA Tesla K40 GPU, using double precision arithmetic. This GPU consists of 15 Streaming Multiprocessors, 275 each containing 64 double precision (DP) units. For both the scalar and block Jacobi triangular solves, we map matrix rows to threads. Theoretically, this strategy fills the DP units for matrices with at least 960 rows. However, for efficient processing it is essential to oversubscribe the processing units and switch between contexts to hide main memory latency. In our experiments, we consider matrices with 1000 to 1.5 280 million rows. The small problems are too small to efficiently utilize the hardware, but we expect that the GPU easily hides the memory latency for the large problems.

The algorithms are implemented using the MAGMA-sparse software package, part of the MAGMA open source software library [33]. MAGMA-sparse uses libraries and compilers from CUDA version 8.0. In particular, exact triangular solves using parallel level-scheduled forward/backward substitution (trsm) use the code implemented in 285 the NVIDIA cuSPARSE library. For the block Jacobi solves, the diagonal blocks are inverted using a batched Gauss-Jordan elimination GPU kernel [34]. We note that we store the inverse of a block diagonal matrix, D^{-1} , as a sparse matrix. For higher effi-

Algorithm 2 Priority blocking with dynamic edge weights. The inputs and outputs are identical to those of Algorithm 1.

```

Initialize blocks:  $S_i = \{i\}, 1 \leq i \leq n$ 
Initialize labels:  $l_i = i, 1 \leq i \leq n$ 
Initialize heap: for all  $a_{ij} \neq 0, i < j$ , add  $(i, j)$  to heap  $H$  with priority  $|a_{ij}| / \sqrt{a_{ii}a_{jj}}$ 
Initialize adjacency lists:  $N_i = \{(j, |a_{ij}| / \sqrt{a_{ii}a_{jj}}), a_{ij} \neq 0\}, 1 \leq i \leq n$ 
while  $H$  is not empty do
     $(i, j) = \text{remove\_largest}(H)$ 
    if  $|S_{l_i}| + |S_{l_j}| \leq m$  then
         $N_{l_i} = \text{merge adjacency lists } N_{l_i} \text{ and } N_{l_j}$ 
         $N_{l_j} = \emptyset$ 
        if  $(k, v) \in N_{l_i}$  is the result of combining two or more adjacencies then
            Add  $(l_i, k)$  to heap  $H$  with priority  $v$ 
        end if
         $l_k = i$  for all  $k \in S_{l_j}$ 
         $S_{l_i} = \text{merge}(S_{l_i}, S_{l_j})$ 
         $S_{l_j} = \emptyset$ 
    end if
end while
print  $S_i$  for all  $|S_i| > 0$ 

```

ciency, D^{-1} could be stored using a specialized data structure as a sequence of dense
290 matrices corresponding to its diagonal blocks.

3.1. Examples

In Figure 1 we present a detailed analysis for the matrix Hook_1498. Figure 1a shows the residual norm history (relative to the norm of the right-hand side) for a single solve with the lower triangular IC(0) factor of the matrix using the scalar Jacobi
295 method. We use a random right-hand side vector, and zero sweeps corresponds to using the initial guess (3). For solving a system of equations with the Hook_1498 matrix, Figure 1b reports the number of IC(0)-PCG iterations required for convergence when up to 6 Jacobi sweeps are used for each triangular solve with the IC(0) factors. As the number of Jacobi sweeps increases, the number of iterations approaches 1338,
300 which is the number required if exact triangular solves are used, corresponding to the conventional approach.

A single scalar Jacobi sweep on an IC(0) factor takes 6.5 milliseconds for this problem, which is more than $33\times$ faster than the cuSPARSE triangular solve, taking 216.7 milliseconds. As we see in Figure 1b, a single Jacobi sweep does not provide
305 sufficient accuracy, and also few sweeps degrade the preconditioner quality making additional PCG iterations necessary. In terms of the PCG run time, the optimal number of Jacobi sweeps for this problem is 3, see Figure 1c. With 3 sweeps, the residual norm for a triangular solve is reduced by less than one order of magnitude (see Figure 1a).

Overall, IC(0)-PCG using exact level-scheduled triangular solves implemented by
310 cuSPARSE requires 660 seconds compared to 165 seconds when 3 Jacobi sweeps are used, a speedup of a factor of 4. We note that this runtime does not include the preconditioner setup time, which can be large for the exact triangular solves as generating the level scheduling data structures is generally a sequential process.

Figure 2 shows the corresponding results for the matrix Geo_1438. The behavior here is different from that observed for the previous example. In particular, the IC(0)-PCG iteration run time (Figure 2c) is not convex. In terms of run time, the optimal number of Jacobi sweeps for this problem is 3 (although the times are very similar for 4 and 5 sweeps), giving a run time speedup of a factor of 3.3.

We observed the behaviors illustrated by these two examples for other matrices, but other behaviors are also possible. For example, as the number of Jacobi sweeps increases, the PCG iteration run time can initially increase and then decrease (possibly below its initial value) before increasing again. Moreover, the residual norm may initially diverge before converging, and a large number of sweeps may be needed to achieve PCG convergence. This is the case for the test matrix bcsstk24. Although this example is relatively small (of order 3562), it is challenging to solve: the matrix has large off-diagonal entries (even after scaling), both diagonal preconditioning and symmetric Gauss-Seidel preconditioning fail to give convergence within a number of steps equal to the dimension of the matrix, and the IC(0) factorization breaks down (that is, a zero or negative pivot is encountered during the factorization). However, the IC(1) factorization exists and provides a good preconditioner, with convergence of IC(1)-PCG in 56 iterations using exact triangular solves. Thus we use IC(1) preconditioning for this matrix.

Figure 3 (left) shows the residual norm for solving with the lower triangular incomplete Cholesky factor of bcsstk24 using the Jacobi method. As the iteration matrix for this factor is highly non-normal, we observe a large increase in the residual norm before convergence sets in. Using fewer than 150 Jacobi sweeps with IC(1) does not give a useful preconditioner. Figure 3 (right) shows the residual norm if block Jacobi is used, using supervariable amalgamation and maximum block sizes $m = 6, 12,$ and 24 . (Note that bcsstk24 essentially has a supervariable structure with a block size 6.) Again there is an initial increase in the residual norm when the number of block Jacobi sweeps is small, but this increase is much less than for scalar Jacobi and the number of sweeps for which it occurs is also much less.

Figure 4 shows IC(1)-PCG iteration counts and run times for different numbers

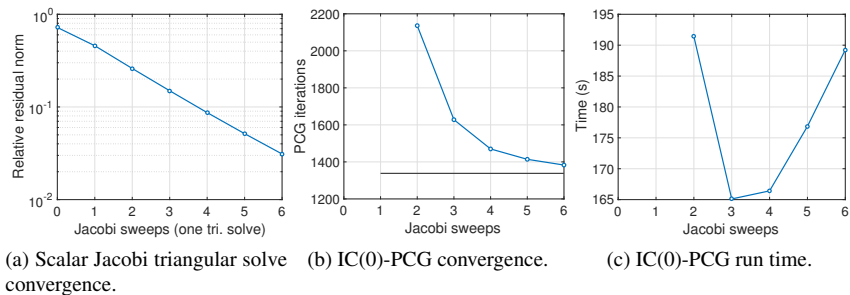


Figure 1: For Hook_1498, the effects of increasing the number of scalar Jacobi sweeps. Using exact triangular solves requires 1338 IC(0)-PCG iterations and 660 seconds.

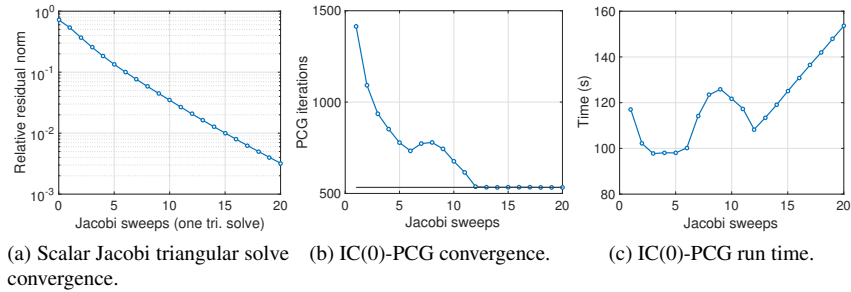


Figure 2: For Geo_1438, the effects of increasing the number of scalar Jacobi sweeps. Using exact triangular solves requires 533 IC(0)-PCG iterations and 320 seconds.

of block Jacobi sweeps. We observe that despite the difficulties using scalar Jacobi sweeps, IC(1)-PCG converges rapidly using 15 block Jacobi sweeps. This example demonstrates the effectiveness of block Jacobi compared to scalar Jacobi iterations.

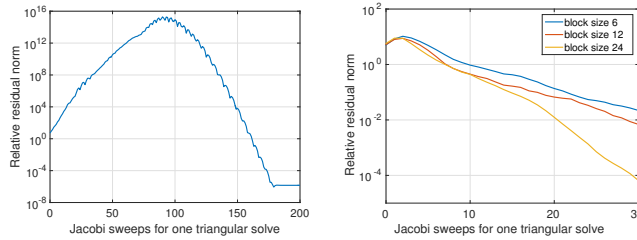


Figure 3: For bcstk24, the relative residual norm for a triangular solve with the lower triangular IC(1) factor and a random right-hand side, without blocking (left) and with supervariable amalgamation (right).

3.2. Increasing the factorization accuracy

In Figure 5 we analyze the relation between the optimal number of scalar Jacobi sweeps and the incomplete Cholesky preconditioner with different levels of fill-in for the thermal_1 matrix. The PCG iteration counts in Figure 5a indicate that the number of Jacobi sweeps necessary to match using exact triangular solves (solid lines) increases with the level of fill-in. Figure 5b reveals that PCG using scalar Jacobi sweeps for the preconditioner application is faster in all cases than PCG based on exact triangular solves. Figure 5c suggests that the optimal number of Jacobi sweeps (giving the lowest PCG execution time) increases with the fill-in level of incomplete Cholesky. This is consistent with the idea that one should try to solve more accurately with a factorization that is more accurate.

3.3. Comprehensive results for Jacobi and block Jacobi iterations

This section presents results for a large number of test problems. With a few exceptions, we chose all the real symmetric positive definite matrices from the SuiteSparse

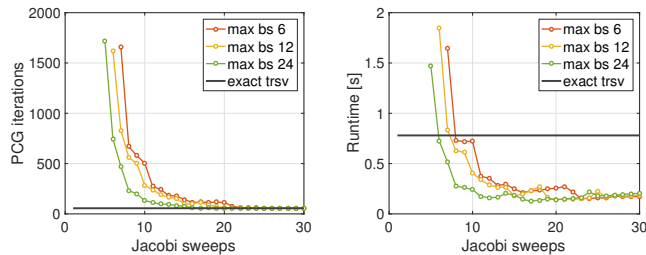


Figure 4: For bcstk24, the effect of increasing the number of Jacobi sweeps on IC(1)-PCG iteration counts (left) and run times (right). Different maximum block sizes are used (max bs). The result of using exact triangular solves is also shown.

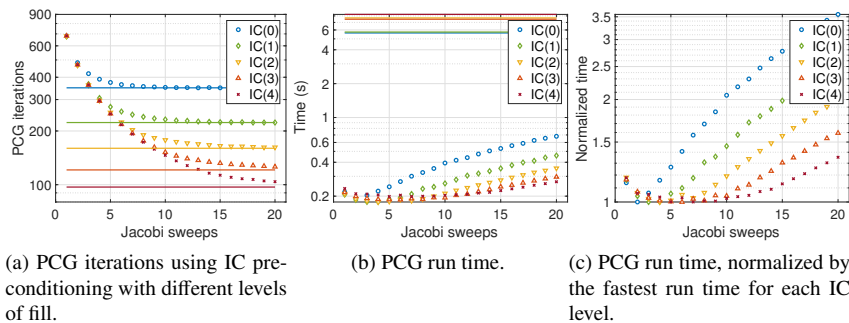


Figure 5: For thermal_1, the effects of increasing the number of scalar Jacobi sweeps.

Matrix Collection that are of order at least 1000 and that are not diagonal. Three matrices from the af_shell set were discarded because of their similarity to af_shell7, which was retained. The Andrews matrix was removed because it uses an integer data type for matrix values. The audikw_1 and Flan_1565 matrices were also removed as the IC(1) preconditioner for these matrices, even after RCM ordering, could not fit in GPU memory. We also discarded three matrices, bloweybq, LFAT5000, and LF10000, whose condition numbers reported at the SuiteSparse Matrix Collection website exceed 10^{17} . This gives us a set of 161 matrices. From this set, we chose two subsets: those that can be solved by IC(0)-PCG (using exact triangular solves) within 3000 iterations and those that can be solved in the same way using IC(1)-PCG. This resulted in a set of 69 matrices for IC(0)-PCG and a set of 78 matrices for IC(1)-PCG. We list the matrices of the two sets along with some key characteristics in the Appendix.

Our goal is to find what fraction of these test sets can be solved using IC(k)-PCG when the exact triangular solves are replaced by Jacobi and block Jacobi iterations. We allow up to 20 Jacobi or block Jacobi sweeps for each triangular solve. For block Jacobi, we use supervariable amalgamation with a maximum block size of $m = 12$. This was chosen because many PDE systems have 3, 4, or 6 degrees of freedom per node.

Table 1 summarizes our findings. In the case of IC(0), 84% of the problems that
 380 can be solved by IC(0)-PCG can also be solved when the exact triangular solves are
 replaced by Jacobi iterations. The fraction increases to 92% when block Jacobi is used.
 For IC(1), the fractions are 74% and 94%, respectively. These results show that for a
 significant proportion of our test problems, the exact triangular solves can be replaced
 by iterative solves. We note, however, that level-based incomplete Cholesky factoriza-
 385 tions may not provide the best preconditioner among all possible preconditioners for all
 of the test problems; our results only show the potential efficacy of iterative triangular
 solves if a level-based incomplete Cholesky factorizations is used as the preconditioner.

Table 1: Number of problems that can be solved when exact triangular solves in IC(k)-PCG ($k = 0, 1$) are replaced by Jacobi and block Jacobi triangular solves.

	IC(0)	IC(1)
Num. solved using exact triangular solves	69	78
Num. solved using Jacobi triangular solves	58 (84%)	58 (74%)
Num. solved using block Jacobi triangular solves	65 (92%)	73 (94%)

For the problems that are successfully solved using Jacobi and block Jacobi, Fig-
 ure 6 shows how many Jacobi and block Jacobi sweeps, respectively, are needed to
 390 minimize the IC(k)-PCG iteration run time. The figures are histograms showing the
 frequency of the number of sweeps. In all cases, there is a clustering of the opti-
 mal number of sweeps around 3, and for most of the problems the optimal number of
 sweeps is fewer than 10.

Figure 7 shows the speedup of the PCG run iteration time when using Jacobi and
 395 block Jacobi triangular solves (using the best number of sweeps for each problem)
 compared to using exact level-scheduled triangular solves implemented within cuS-
 PARSE. The plots show that the speedup can exceed 10 \times and that only a small number
 of problems suffer a slow down. The results also show that compared to scalar Jacobi,
 block Jacobi results in fewer problems experiencing a slow down.

We observe from Table 1 that using Jacobi iterations for IC(1)-PCG solves results in
 400 a smaller percentage of problems being solved compared to using Jacobi iterations for
 IC(0)-PCG. This suggests that the IC(1) incomplete factors are less diagonally domi-
 nant than the IC(0) factors. On the other hand, we found a similar percentage of
 problems that were solved when block Jacobi iterations are used for IC(0)-PCG and
 405 for IC(1)-PCG.

To investigate these issues, we compute the *off-diagonal* dominance of the IC(0)
 and IC(1) incomplete factors. We define the off-diagonal dominance of an $n \times n$ matrix
 A as

$$\frac{1}{n} \sum_i^n \sum_{j \neq i}^n \frac{|a_{ij}|}{|a_{ii}|}.$$

Likewise, we define *block off-diagonal* dominance of a matrix A with $k \times k$ blocking by

$$\frac{1}{k} \sum_i^k \sum_{j \neq i}^k \frac{\|A_{ij}\|}{\|A_{ii}^{-1}\|^{-1}},$$

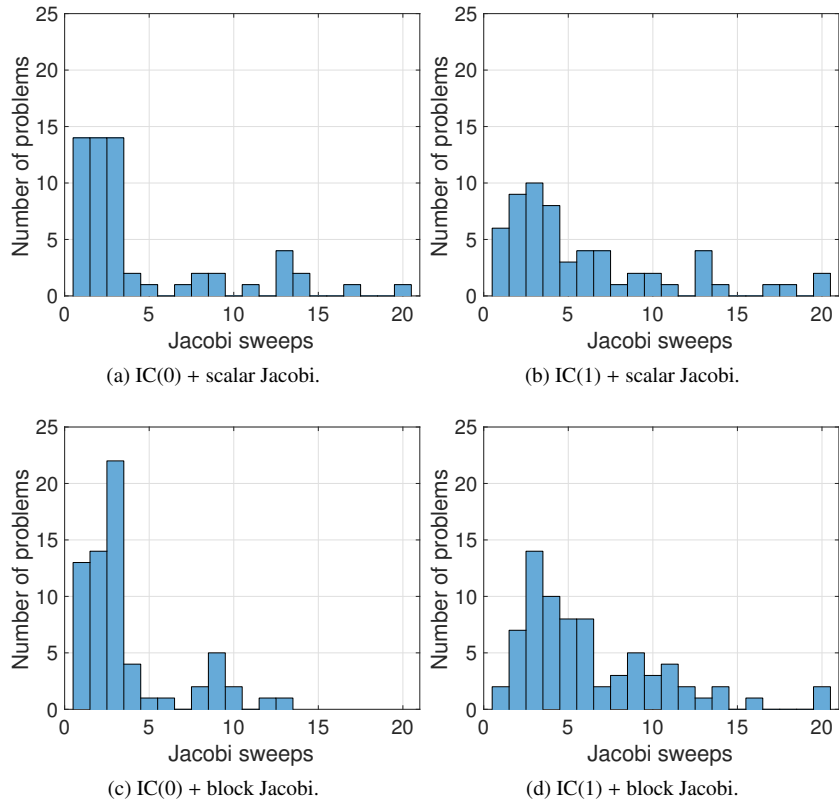


Figure 6: Optimal number of sweeps to minimize PCG iteration run time. The block Jacobi results (bottom row) use supervariable amalgamation and a maximum block size of 12.

410 where A_{ij} denotes (i, j) -th block of the matrix. This definition follows the definition of *block diagonal dominance* of Feingold and Varga [35]. For convenience, we use the Frobenius norm in the above definition.

415 Figure 8 plots these two quantities for the 65 matrices in our test set that have both IC(0) and IC(1) factors. The results show that for nearly every matrix, the (block) off-diagonal dominance of the IC(1) factor is either the same or higher than for the IC(0) factor. This suggests that Jacobi iterations will become less effective as more accurate incomplete factorizations are used. However, the numerical results we have already presented indicate that using block Jacobi with IC(1) we are able to solve a large fraction of the test problems where IC(1) was successful with exact solves.

420 3.4. Results with priority blocking

The blocking technique used may have a large influence on the results of block Jacobi iteration. For simplicity, we used supervariable amalgamation in our experiments. In this section, however, we briefly show that more delicate blocking techniques may

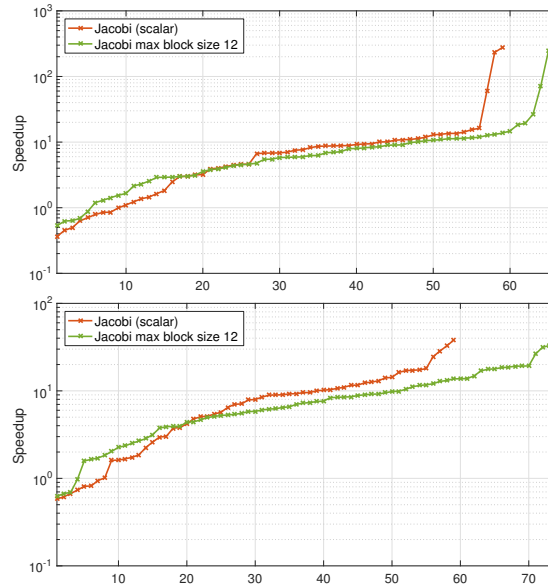


Figure 7: Speedup of the PCG iteration run time when using Jacobi and block Jacobi triangular solves compared to using exact triangular solves. Top: IC(0). Bottom: IC(1). Matrix problems on the x -axis are sorted by speedup, and are not the same for the different curves. Note that the curves have different lengths because different numbers of problems can be solved for each preconditioner configuration (block size and IC level). These speedups are for the same runs shown in the previous histograms.

be effective. Our motivation is not to advocate a single blocking method, but to emphasize that a user should carefully select or design a blocking method that is suitable for the problem.

From the results for IC(0)-PCG in Table 1, there are four test examples that could not be solved when using block Jacobi solves with supervariable amalgamation but were solved using direct triangular solves. These examples are problems `cfid1`, `crankseg_1`, `crankseg_2`, and `Emilia_923`. We now show that these can be solved using the two priority blocking methods mentioned earlier. Note that detailed results for `crankseg_2` are not shown, because of its similarity to `crankseg_1`.

Recall that once the blocks are identified by a priority blocking algorithm, an RCM ordering is applied to the condensed graph to determine the final ordering of the matrix. This ordering generally differs from an RCM ordering of the original matrix. We refer to the orderings resulting from the priority blocking and priority blocking with dynamic edge weight algorithms as PB and PBD orderings, respectively. We first compare the effect of the RCM, PB, and PBD orderings on convergence and parallel performance using IC(0)-PCG with exact triangular solves. For the PB and PBD orderings, the blockings are determined using a maximum block size of 12, the same value as was used earlier for supervariable amalgamation. Results are given in Table 2. In addition to the IC(0)-PCG iteration counts and the iteration run time, the number of levels in the level scheduling for the exact triangular solves is reported because this affects how

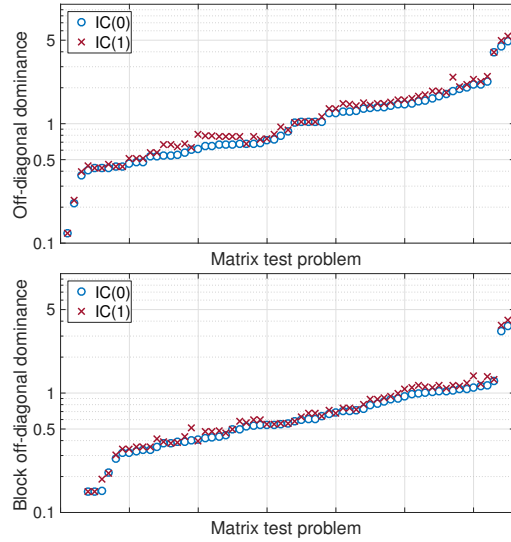


Figure 8: Off-diagonal dominance (top) and block off-diagonal dominance (bottom) for 65 test matrices, with matrices sorted by the value for the IC(0) factor. Smaller values means a matrix is more diagonally dominant.

Table 2: For IC(0), results using exact triangular solves (cuSPARSE) for problems using three different orderings: RCM, PB, and PBD. The table shows the number of IC(0)-PCG iterations, the iteration run time, and the number of levels in the level scheduling.

	IC(0)-PCG iterations			Run time			Number of levels		
	RCM	PB	PBD	RCM	PB	PBD	RCM	PB	PBD
cfd1	445	496	537	24.8	15.7	32.4	2831	1249	2903
crankseg_1	88	190	163	23.3	99.8	96.7	6841	13594	16086
Emilia_923	305	604	1346	226.1	99.7	269.8	33495	3749	4938

efficiently the exact triangular solves are parallelized. We observe that for our three test
 445 matrices, the PB and PBD orderings generally lead to increased iteration counts, con-
 firming that RCM is a good ordering for incomplete Cholesky factorizations. However,
 we also observe the anomaly that the PB and PBD orderings can reduce the run times.
 Because of the locations of large nonzeros in the matrix, PB and PBD can (but not
 always) result in an ordering that *reduces* the number of levels, meaning that the level-
 450 scheduled triangular solves can be more efficiently parallelized, leading to a decrease
 in the iteration run time.

We next use the PB and PBD orderings for IC(0)-PCG with block Jacobi solves.
 We also test orderings generated from METIS partitionings of the matrices using edge
 weights (with average block size 12). As with the PB and PBD orderings, the METIS
 455 ordering is obtained by applying RCM to a condensed graph. In Figure 9 (bottom
 row) we present results for the METIS ordering for problems cfd1 and crankseg_1; the

IC(0) factorization broke down for problem Emilia_923 with the METIS ordering so is omitted. Note that we also tested TPABLO on these matrices using a maximum block size of 12 and a range of parameter values, including the default. However, the block Jacobi solves converged slowly and did not provide effective preconditioners.

460

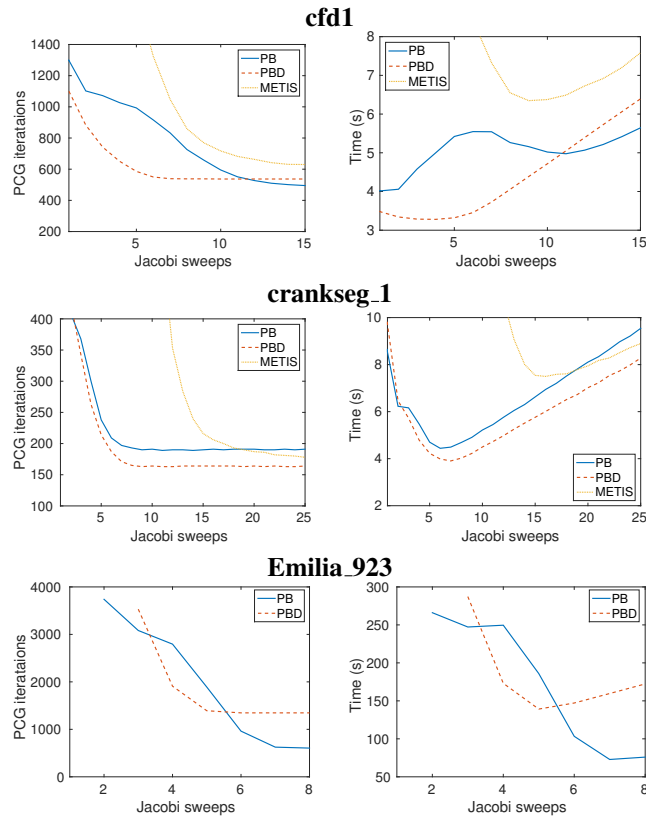


Figure 9: IC(0)-PCG iterations and iteration run time as a function of the number of block Jacobi sweeps, using the PB, PBD, and METIS orderings.

Figure 9 shows the IC(0)-PCG iteration counts (left column) and the iteration run time (right column) as the number of block Jacobi sweeps is varied. Although the block Jacobi triangular solves were not effective when supervariable amalgamation was used for these matrices, we observe that after only a small number of block Jacobi sweeps (fewer than 10), the number of IC(0)-PCG iterations is almost the same as for exact triangular solves. The METIS orderings give IC(0)-PCG iteration run times that are worse than those for the PB and PBD orderings.

465

Table 3 shows the optimal number of block Jacobi sweeps for the PB and PBD orderings to minimize the iteration run time. The corresponding number of PCG iterations and the run time are also reported. The timings in this table can be compared to those in Table 2. We observe that for each system, the best run times for block Jacobi

470

Table 3: The optimal number of block Jacobi sweeps and the corresponding number of IC(0)-PCG iterations and iteration time for the PB and PBD orderings.

	PB			PBD		
	sweeps	iters	time	sweeps	iters	time
cf1	1	1298	4.0	4	651	3.3
crankseg_1	6	209	4.4	7	171	3.9
Emilia_923	7	625	72.8	5	1392	139.2

sweeps are always faster than using exact triangular solves. If we compare block Jacobi solves using the PB ordering to exact triangular solves using RCM, the run time speedups are 6.2, 5.3, and 3.1 for our three test matrices.

475 From the results for IC(1) in Table 1, there are five problems that could not be solved when using block Jacobi with supervariable amalgamation. These problems are nd3k, crankseg_1, crankseg_2, m_t1, and Emilia_923. Once again, we try to solve these problems with the two priority blocking methods. In this case, we are able to solve all the problems except m_t1. Tables 4 and 5 report results for IC(1)-PCG analogous
480 to those for IC(0)-PCG shown in Tables 2 and 3, respectively. (Again, we only show results for crankseg_1 and not for crankseg_2.) We see that IC(1)-PCG with iterative triangular solves is faster than using exact triangular solves.

Table 4: For IC(1), results using exact triangular solves (cuSPARSE) for problems using three different orderings: RCM, PB, and PBD. The table shows the number of IC(1)-PCG iterations, the iteration run time, and the number of levels in the level scheduling.

	PCG iterations			Time			Num. levels		
	RCM	PB	PBD	RCM	PB	PBD	RCM	PB	PBD
nd3k	51	63	58	38.1	50.4	44.7	7716	7564	7052
crankseg_1	40	59	49	39.2	177.9	142.6	15856	33357	32864
Emilia_923	102	496	1121	149.3	359.8	1220.8	60264	17913	31071

Table 5: The optimal number of block Jacobi sweeps and the corresponding number of IC(1)-PCG iterations and iteration time for PB and PBD ordering.

	PB			PBD		
	sweeps	iters	time	sweeps	iters	time
nd3k	22	69	1.8	23	60	1.4
crankseg_1	9	61	3.0	9	54	2.6
Emilia_923	8	496	99.0	5	1181	167.3

485 The system with matrix m_t1 could not be solved with IC(1)-PCG using either Jacobi or block Jacobi sweeps. We note that m_t1 has large off-diagonal entries, essentially as large as the diagonal values themselves. When a matrix has a full subdiagonal

of large nonzero values, for example, there is no blocking that can prevent some of these large entries from being outside a block diagonal structure.

4. Conclusions

The main goal of this paper is to understand the applicability of Jacobi and block
490 Jacobi iterations for solving the sparse triangular systems arising from incomplete
Cholesky preconditioning. As always, artificial problems can be constructed to de-
feat the Jacobi approach. However, we find that for a diverse set of *realistic* symmetric
positive definite test problems using IC(0)-PCG and IC(1)-PCG, Jacobi iterations are
effective for a large proportion of the problems. We also showed that by using block
495 Jacobi, robustness could be enhanced. Even better results for some problems could be
obtained by using blocking techniques that use matrix values (e.g., priority blocking).

We note that these results do depend on the parallelism of the computing architec-
ture. The use of (block) Jacobi is targeted for high parallelism cases, like GPUs and
manycore CPUs. With lower amounts of parallelism, there are two main effects: (1) the
500 advantage of using (block) Jacobi over exact solves inside PCG is smaller or may not
be effective, and (2) it is possible that the PCG solve time as a function of the number
of sweeps might only increase and not decrease, i.e., more sweeps always increases
the PCG solve time because the (block) Jacobi triangular solves are not computed fast
enough for there to be an advantage to using multiple sweeps.

This paper did not address how to choose the optimal number of Jacobi sweeps to
505 use in the PCG solver. A fixed number of sweeps is desirable, as the preconditioner is
then a fixed operator and a “flexible” solver is not needed. However, in practice, the
number of sweeps could be adjusted dynamically and the iterations restarted based on
the convergence of PCG. If a flexible solver is available, e.g. FGMRES [36] or flexible
510 conjugate gradients [37, 38], then a different number of Jacobi sweeps based on the
residual norm reduction for each approximate triangular solve could be used.

A caveat when reading the results of this paper is that no preconditioner is best for
all problems, as the choice of preconditioner must be matched to the difficulty (e.g.,
conditioning) of the problem. Thus in this paper we do not imply that incomplete
515 factorization preconditioning combined with Jacobi iterative triangular solves is the
best method to use for all problems. Instead, if incomplete factorization is deemed to
be effective for a given problem compared to other preconditioners, then it is likely
that Jacobi triangular solves will yield a speedup over traditional triangular solves on
highly parallel computer architectures.

520 Acknowledgments

This research was supported by the Department of Energy, Office of Science, Of-
fice of Advanced Scientific Computing Research, Applied Mathematics program under
Award Numbers DE-SC-0016564 and DE-SC-0016513. This research was also sup-
ported by EPSRC grant EP/I013067/1. H. Anzt was partially supported by the “Impuls
525 und Vernetzungsfond of the Helmholtz Association” under grant VH-NG-1241.

References

- [1] E. C. Anderson, Y. Saad, Solving sparse triangular systems on parallel computers, *International J. of High Speed Computing* 1 (1989) 73–96.
- [2] S. W. Hammond, R. Schreiber, Efficient ICCG on a shared memory multiprocessor, *International J. High Speed Computing* 4 (1992) 1–21.
- [3] J. H. Saltz, Aggregation methods for solving sparse triangular systems on multiprocessors, *SIAM J. on Scientific and Statistical Computing* 11 (1) (1990) 123–144.
- [4] M. M. Wolf, M. A. Heroux, E. G. Boman, Factors impacting performance of multithreaded sparse triangular solve, *High Performance Computing for Computational Science – VECPAR 2010* 6449 (2010) 32–44.
- [5] R. Li, Y. Saad, GPU-accelerated preconditioned iterative linear solvers, *The Journal of Supercomputing* 63 (2) (2013) 443–466.
- [6] H. Anzt, E. Chow, J. Dongarra, Iterative sparse triangular solves for preconditioning, *Lecture Notes in Computer Science* 9233 (2015) 650–661.
- [7] E. Chow, A. Patel, Fine-grained parallel incomplete LU factorization, *SIAM J. on Scientific Computing* 37 (2) (2015) C169–C193.
- [8] M. Benzi, M. Tuma, A comparative study of sparse approximate inverse preconditioners, *Applied Numerical Mathematics* 30 (1999) 305–340.
- [9] A. C. N. van Duin, Scalable parallel preconditioning with the sparse approximate inverse of triangular matrices, *SIAM J. on Matrix Analysis and Applications* 20 (4) (1999) 987–1006.
- [10] F. L. Alvarado, R. Schreiber, Optimal parallel solution of sparse triangular systems, *SIAM J. on Scientific Computing* 14 (2) (1993) 446–460.
- [11] A. Pothen, F. L. Alvarado, A fast reordering algorithm for parallel sparse triangular solution, *SIAM J. on Scientific Computing* 13 (2) (1992) 645–653.
- [12] H. A. Van der Vorst, A vectorizable variant of some ICCG methods, *SIAM J. on Scientific Computing* 3 (1982) 350–356.
- [13] H. Anzt, T. K. Huckle, J. Bräckle, J. Dongarra, Incomplete sparse approximate inverses for parallel preconditioning, *Parallel Computing* 71 (Supplement C) (2018) 1 – 22.
- [14] M. T. Jones, P. E. Plassmann, Scalable iterative solution of sparse linear-systems, *Parallel Computing* 20 (5) (1994) 753–773.
- [15] E. H. Cuthill, J. McKee, Reducing the bandwidth of sparse symmetric matrices, in: *Proceedings 24th National Conference of the ACM*, ACM Press, 1969, pp. 157–172.

- [16] S. W. Sloan, An algorithm for profile and wavefront reduction of sparse matrices, *International J. of Numerical Methods in Engineering* 23 (1986) 239–251.
- [17] M. Benzi, W. D. Joubert, G. Mateescu, Numerical experiments with parallel orderings for ILU preconditioners, *Electronic Transactions on Numerical Analysis* 8 (1999) 88–114.
- [18] S. Doi, On parallelism and convergence of incomplete LU factorizations, *Applied Numerical Mathematics* 7 (5) (1991) 417–436.
- [19] S. Doi, T. Washio, Ordering strategies and related techniques to overcome the trade-off between parallelism and convergence in incomplete factorizations, *Parallel Computing* 25 (13-14) (1999) 1995–2014.
- [20] I. S. Duff, G. A. Meurant, The effect of ordering on preconditioned conjugate gradients, *BIT Numerical Mathematics* 29 (4) (1989) 635–657.
- [21] H. C. Elman, E. Agrón, Ordering techniques for the preconditioned conjugate-gradient method on parallel computers, *Computer Physics Communications* 53 (1-3) (1989) 253–269.
- [22] E. L. Poole, J. M. Ortega, Multicolor ICCG methods for vector computers, *SIAM J. on Numerical Analysis* 24 (6) (1987) 1394–1417.
- [23] E. Chow, Y. Saad, Experimental study of ILU preconditioners for indefinite matrices, *Journal of Computational and Applied Mathematics* 86 (2) (1997) 387–414.
- [24] C. Ashcraft, Compressed graphs and the minimum degree algorithm, *SIAM Journal on Scientific Computing* 16 (6) (1995) 1404–1411.
- [25] Y. Saad, Finding exact and approximate block structures for ILU preconditioning, *SIAM Journal on Scientific Computing* 24 (4) (2003) 1107–1123.
- [26] J. D. Hogg, J. A. Scott, A modern analyse phase for sparse tree-based direct methods, *Numerical Linear Algebra with Applications* 20 (2013) 397–412.
- [27] G. Karypis, V. Kumar, A fast and high quality multilevel scheme for partitioning irregular graphs, *SIAM Journal on Scientific Computing* 20 (1) (1998) 359–392.
- [28] D. Fritzsche, A. Frommer, D. B. Szyld, Extensions of certain graph-based algorithms for preconditioning, *SIAM J. on Scientific Computing* 29 (2007) 2144–2161.
- [29] J. O’Neil, D. B. Szyld, A block ordering method for sparse matrices, *SIAM Journal on Scientific and Statistical Computing* 11 (5) (1990) 811–823.
- [30] I. S. Duff, K. Kaya, Preconditioners based on strong subgraphs, *Electronic Transactions on Numerical Analysis* 40 (2013) 225–248.
- [31] R. E. Tarjan, An improved algorithm for hierarchical clustering using strong components, *Information Processing Letters* 17 (1) (1983) 37–41.

- [32] T. A. Davis, Y. Hu, The University of Florida sparse matrix collection, *ACM Transactions on Mathematical Software* 38, article 1, 25 pages.
- 600 [33] Innovative Computing Lab, Software distribution of MAGMA version 2.2.0, <http://icl.cs.utk.edu/magma/> (2016).
- [34] H. Anzt, J. Dongarra, G. Flegar, E. S. Quintana-Ortí, Variable-size batched Gauss–Jordan elimination for block-Jacobi preconditioning on graphics processors, *Parallel Computing*, 2018.
- 605 [35] D. G. Feingold, R. S. Varga, Block diagonally dominant matrices and generalizations of the Gerschgorin circle theorem., *Pacific Journal of Mathematics* 12 (4) (1962) 1241–1250.
- [36] Y. Saad, A flexible inner-outer preconditioned GMRES algorithm, *SIAM J. on Scientific and Statistical Computing* 14 (1993) 461–469.
- 610 [37] O. Axelsson, *Iterative Solution Methods*, Cambridge University Press, Cambridge, 1994.
- [38] Y. Notay, Flexible conjugate gradients, *SIAM Journal on Scientific Computing* 22 (4) (2000) 1444–1460.

Appendix

615 *A1: Problems for the IC(0) analysis*

Name	#rows	#nonzeros	Name	#rows	#nonzeros
e1138_bus	1138	4054	wathen100	30401	471601
Chem97ZtZ	2541	7361	gridgena	48962	512084
bcsstk08	1074	12960	apache1	80800	542184
mhd3200b	3200	18316	wathen120	36441	565761
bcsstm12	1473	19659	thermal1	82654	574458
mhd4800b	4800	27520	crystm03	24696	583770
plbuckle	1282	30644	finan512	74752	596992
bcsstk27	1224	56126	thermomech_TC	102158	711558
nasa2146	2146	72250	thermomech_TK	102158	711558
fv1	9604	85264	Pres_Poisson	14822	715804
fv2	9801	87025	G2_circuit	150102	726674
crystm01	4875	105339	bundle1	10581	770811
bodyy4	17546	121550	Dubcova2	65025	1030225
aft01	8205	125567	thermomech_dM	204316	1423116
bodyy5	18589	128853	t2cubes_sphere	101492	1647264
bodyy6	19366	134208	qa8fm	66127	1660579
ted.B	10605	144579	cfid1	70656	1825580
ted.B_unscaled	10605	144579	Dubcova3	146689	3636643
Muu	7102	170134	parabolic_fem	525825	3674625
t2dah.e	11445	176117	offshore	259789	4242673
obstclae	40000	197608	pdBIHYS	36417	4344765
torsion1	40000	197608	apache2	715176	4817870
jnlbrng1	40000	199200	tmt_sym	726713	5080961
minsurfo	40806	203622	G3_circuit	1585478	7660826
s1rmt3m1	5489	217651	thermal2	1228045	8580313
s2rmt3m1	5489	217681	crankseg_1	52804	10614210
Dubcova1	16129	253009	crankseg_2	63838	14148858
s1rmq4m1	5489	262411	af_shell7	504855	17579155
s2rmq4m1	5489	263351	bundle_adj	513351	20207907
bcsstk16	4884	290378	Emilia_923	923136	40373538
crystm02	13965	322905	Hook_1498	1498023	59374451
shallow_water1	81920	327680	Geo_1438	1437960	60236322
shallow_water2	81920	327680	Trefethen_2000	2000	41906
Kuu	7102	340200	Trefethen_20000	20000	554466
gyro_m	17361	340431			

Table 6: Table listing the matrices along with key characteristics that are included in the IC(0) tests.

A2: Problems for the IC(1) analysis

Name	#rows	#nonzeros	Name	#rows	#nonzeros
e1138_bus	1138	4054	crystm02	13965	322905
Chem97ZiZ	2541	7361	shallow_water1	81920	327680
bcsstk08	1074	12960	shallow_water2	81920	327680
mhd3200b	3200	18316	Kuu	7102	340200
bcsstm12	1473	19659	gyro_m	17361	340431
bcsstk10	1086	22070	wathen100	30401	471601
msc01050	1050	26198	gridgena	48962	512084
mhd4800b	4800	27520	apache1	80800	542184
plbuckle	1282	30644	wathen120	36441	565761
bcsstk27	1224	56126	thermal1	82654	574458
bcsstk14	1806	63454	crystm03	24696	583770
nasa2146	2146	72250	finan512	74752	596992
fv1	9604	85264	cbuckle	13681	676515
fv2	9801	87025	thermomech_TC	102158	711558
msc04515	4515	97707	thermomech_TK	102158	711558
crystm01	4875	105339	Pres_Poisson	14822	715804
bcsstk15	3948	117816	G2_circuit	150102	726674
bodyy4	17546	121550	bundle1	10581	770811
af101	8205	125567	Dubcova2	65025	1030225
bodyy5	18589	128853	thermomech_dM	204316	1423116
bodyy6	19366	134208	t2cubes_sphere	101492	1647264
ted_B	10605	144579	qa8fm	66127	1660579
ted_B_unscaled	10605	144579	nd3k	9000	3279690
bcsstk24	3562	159910	Dubcova3	146689	3636643
Muu	7102	170134	parabolic_fem	525825	3674625
t2dah_e	11445	176117	cant	62451	4007383
obstclae	40000	197608	pdb1HYS	36417	4344765
torsion1	40000	197608	apache2	715176	4817870
jnlbrng1	40000	199200	ecology2	999999	4995991
minsurfo	40806	203622	tmt_sym	726713	5080961
s3rmt3m3	5357	207123	G3_circuit	1585478	7660826
s1rmt3m1	5489	217651	thermal2	1228045	8580313
s3rmt3m1	5489	217669	m_t1	97578	9753570
s2rmt3m1	5489	217681	crankseg_1	52804	10614210
Dubcova1	16129	253009	crankseg_2	63838	14148858
s1rmq4m1	5489	262411	af_shell7	504855	17579155
s3rmq4m1	5489	262943	Emilia_923	923136	40373538
s2rmq4m1	5489	263351	Hook_1498	1498023	59374451
bcsstk16	4884	290378	Geo_1438	1437960	60236322

Table 7: Table listing the matrices along with key characteristics that are included in the IC(1) tests.