



Additional global climate cooling by clouds due to ice crystal complexity

Emma Järvinen^{1,a}, Olivier Jourdan², David Neubauer³, Bin Yao⁴, Chao Liu⁴, Meinrat O. Andreae^{5,6}, Ulrike Lohmann³, Manfred Wendisch⁷, Greg M. McFarquhar^{8,9}, Thomas Leisner¹, and Martin Schnaiter¹

¹Karlsruhe Institute of Technology, Institute of Meteorology and Climate Research, Karlsruhe, Germany

²Laboratoire de Météorologie Physique, Université Clermont Auvergne, OPGC, UMR/CNRS 6016, Clermont-Ferrand, France

³Institute of Atmospheric and Climate Science, ETH Zürich, Zürich, Switzerland

⁴Collaborative Innovation Center on Forecast and Evaluation of Meteorological Disasters, Nanjing University of Information Science and Technology, Nanjing 210044, China

⁵Biogeochemistry Department, Max Planck Institute for Chemistry, Mainz, Germany

⁶Scripps Institution of Oceanography, University of California San Diego, La Jolla, California, USA

⁷Leipzig Institute for Meteorology, University of Leipzig, Leipzig, Germany

⁸Cooperative Institute for Mesoscale Meteorological Studies, University of Oklahoma, Norman, OK, USA

⁹School of Meteorology, University of Oklahoma, Norman, OK, USA

^anow at: National Center for Atmospheric Research (NCAR), Boulder, CO, USA

Correspondence: Emma Järvinen (jarvinen@ucar.edu)

Received: 16 May 2018 – Discussion started: 12 June 2018

Revised: 28 September 2018 – Accepted: 7 October 2018 – Published: 2 November 2018

Abstract. Ice crystal submicron structures have a large impact on the optical properties of cirrus clouds and consequently on their radiative effect. Although there is growing evidence that atmospheric ice crystals are rarely pristine, direct in situ observations of the degree of ice crystal complexity are largely missing. Here we show a comprehensive in situ data set of ice crystal complexity coupled with measurements of the cloud angular scattering functions collected during a number of observational airborne campaigns at diverse geographical locations. Our results demonstrate that an overwhelming fraction (between 61 % and 81 %) of atmospheric ice crystals sampled in the different regions contain mesoscopic deformations and, as a consequence, a similar flat and featureless angular scattering function is observed. A comparison between the measurements and a database of optical particle properties showed that severely roughened hexagonal aggregates optimally represent the measurements in the observed angular range. Based on this optical model, a new parameterization of the cloud bulk asymmetry factor was introduced and its effects were tested in a global climate model. The modelling results suggest that, due to ice crystal

complexity, ice-containing clouds can induce an additional short-wave cooling effect of -1.12 W m^{-2} on the top-of-the-atmosphere radiative budget that has not yet been considered.

1 Introduction

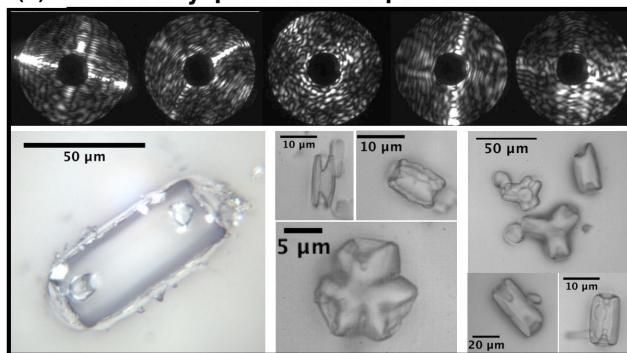
Atmospheric ice crystals exhibit considerable variability in growth habits (Heymsfield and Platt, 1984; Korolev et al., 1999; Lawson et al., 2006), which makes their representation in global and regional climate and numerical weather prediction models challenging. Moreover, laboratory observations and satellite retrievals have shown that ice crystal mesoscopic structures, such as surface roughness or other crystal deformations, which have been observed in various environmental conditions (Ulanowski et al., 2006; van Diedenhoven et al., 2012; Neshyba et al., 2013; Cole et al., 2014; Magee et al., 2014; Ulanowski et al., 2014), can further complicate their realistic representation. Ice crystal surface roughness was added as a new variable to models of ice particle optical properties

(e.g. Macke et al., 1996; Yang and Liou, 1998; Baran et al., 2001; Baran and Francis, 2004; Sun et al., 2004; Yang et al., 2008; Baum et al., 2010; Platnick et al., 2017). Later, it was found that ice crystal parameterizations implementing roughened surfaces represent the measured optical properties, especially the polarization effects of atmospheric ice clouds, more accurately than parameterizations based on a mixture of pristine ice crystals (Baran and Labonnote, 2006; Um and McFarquhar, 2007; Jourdan et al., 2010; Liu et al., 2014b; Yi et al., 2016; Tang et al., 2017). Currently, severely roughened aggregated ice crystals are assumed in remote-sensing retrieval algorithms (Platnick et al., 2017), and it has been suggested to include this type of ice crystals in the radiative transfer algorithms of general circulation models (Yi et al., 2016). However, the observational justification of this approach is still lacking, mainly because sufficient evidence of frequent occurrence of roughened ice crystals in different types of ice-containing clouds has not been obtained yet.

Surface roughness changes the ice crystal single-scattering properties significantly. Light-scattering calculations have shown that, compared to pristine ice crystals, ice particles with roughened surfaces produce flat and featureless angular scattering functions that reveal a significantly elevated backward scattering and, therefore, a lower asymmetry factor compared to their smooth counterparts (Yang and Liou, 1998; Ulanowski et al., 2006; Baum et al., 2011; Yi et al., 2016). In situ observations at several geographical locations have given indications of low asymmetry factors in ice clouds in the range of 0.74 to 0.79 (Gerber et al., 2000; Gayet et al., 2006; Febvre et al., 2009; Jourdan et al., 2010). However, without simultaneous measurements of the ice particle surface roughness, it remains unclear whether the measured low asymmetry factors of natural ice clouds are induced by this feature. In general, more measurements of the cloud asymmetry factor are needed, since a small change in the asymmetry factor can have significant consequences for the short-wave cloud radiative effect (SWCRE). Yi et al. (2013) showed that assuming severely roughened ice crystals and, thus, lowering the cloud short-wave (SW) asymmetry factors by values between 0.01 and 0.035 can cause additional SW cooling of 1–2 W m² at the top of the atmosphere.

Recent developments in airborne in situ measurement techniques have enabled ice crystal complexity to be directly measured at mesoscopic scales (here defined as structures on a scale between 100 nm and 10 μm), which had previously been too small to be resolved from cloud particle imager measurements. The Small Ice Detector mark 3 (SID-3) (Kaye et al., 2008) records the spatial distribution of coherent laser light scattered by individual ice crystals (examples of scattering patterns are shown in Fig. 1). The image texture of the resulting single-particle scattering patterns can be analysed to retrieve the complexity parameter, k_e , which has proven to be a suitable proxy for the actual ice crystal mesoscopic complexity (Schnaiter et al., 2016). In this context, mesoscopic complexity comprises all crystal deformations (e.g. surface

(a) Laboratory-produced ice particles



(b) Ice particles in a tropical cirrus

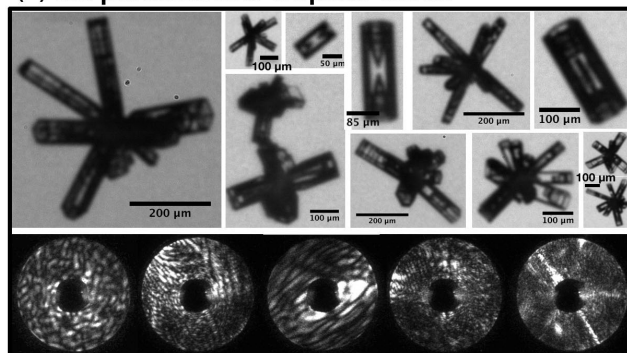


Figure 1. Hexagonal ice crystals and 2-D diffraction patterns measured in laboratory simulations at -50°C (a) and in tropical cirrus at -60°C (b). The microscopic images of the laboratory-produced ice crystals are from ice crystal replicas and the tropical cirrus ice particles were imaged in flight using bright field microscopy. The 2-D diffraction patterns were measured simultaneously from the same particle population.

roughness, hollowness and air inclusions), which result in the formation of speckles in the coherent light scattering by these particles. Since the SID-3 instrument does not discriminate between mesoscopic complexity and surface roughness, for the remainder of this paper the term “ice crystal mesoscopic complexity” is used instead of the more established term “ice crystal surface roughness”.

Here, the complexity analysis is applied to cloud chamber studies of simulated cirrus clouds and to globally distributed measurements from five airborne measurement campaigns conducted between 2011 and 2017 during spring and summer covering regions from the tropics to the Arctic. The observations of the ice crystal mesoscopic complexity are linked to measurements of the ice particle angular scattering function taken at various geographical locations in the Southern and Northern hemispheres with two polar nephelometers, the Particle Habit Imaging and Polar Scattering (PHIPS) probe and the polar nephelometer (PN). In two cases the crystal complexity measurements and the angular scattering measurements were conducted simultaneously on the same ice particle populations. The measurement methods and loca-

tions are discussed in Sect. 2 and the results in Sect. 3. To assess the significance of the observations to the magnitude of the SWCRE, the measured cloud angular scattering function was parameterized, and the new parameterization was tested in the ECHAM-HAM global climate model and compared to results generated by the standard parameterization. The respective results of the simulations are discussed in Sect. 4.

2 Methods

2.1 Ice particle complexity analysis

The mesoscopic complexity of individual sub-50 μm ice particles was determined using the SID-3 instrument (Kaye et al., 2008), which records the spatial intensity distribution of coherent laser light scattered in the angular range of 7 to 23° as a two-dimensional (2-D) scattering pattern. Representative examples of respective scattering patterns are shown in Fig. 1. The crystal complexity is quantified from the 2-D scattering patterns using a grey-level co-occurrence matrix (GLCM) method (Lu et al., 2006). This approach was developed for industrial quality control of surface treatment processes and was later adapted for analysis of complexity features of three-dimensional ice particles (Ulanowski et al., 2010, 2014; Schnaiter et al., 2016). A more detailed description of the analysis of ice crystal scattering patterns used in this study can be found in Schnaiter et al. (2016).

The GLCM analysis was performed only for scattering patterns that were well illuminated and contained less than 15 % saturated pixels. To be consistent with laboratory studies by Schnaiter et al. (2016), the SID-3 camera gain settings were chosen between 175 and 195, and only images within a narrow mean brightness range between 10 and 50 were selected. These steps were taken to minimize image brightness biases for the GLCM analysis.

Although the SID-3 has an open geometry to minimize artefacts due to ice particle shattering on the probe housing (McFarquhar et al., 2007; Cotton et al., 2010; Korolev et al., 2011), on some occasions shattering events are observed. Two-dimensional scattering patterns from shattered particles can be distinguished from “real” ice particles by analysing the particle time of flight (TOF). A typical residence time in the 160 μm -diameter laser beam at an airspeed of 200 m s^{-1} is 0.8 μs that, divided by the 21 ns clock cycle, corresponds a TOF of 38. In a shattering event, shattered ice crystal fractions pass the sensitive area of the laser beam with short enough interarrival times, such that the electronics could not resolve the individual pulses but instead a long TOF value was recorded. To exclude analysing 2-D scattering patterns belonging to shattered particles, the TOF was empirically limited to values below 350. This led to a removal of around 1 % of the 2-D scattering patterns with mean brightness ranges between 10 and 50 measured in high-altitude clouds. In mixed-phase clouds a higher fraction of

measured 2-D scattering patterns, between 7.5 % and 19 %, were excluded from analysis. The higher fraction of shattering in mixed-phase clouds can be explained by the presence of rimed particles (Jackson et al., 2014).

The result of the GLCM analysis is an optical complexity parameter, k_e , which covers values approximately between 4 and 6 depending on the degree of the actual mesoscopic complexity of the ice crystals. It was shown using both discrete dipole approximation light-scattering calculations and cloud chamber simulations that there is a correlation between the optical complexity parameter k_e and the physical surface roughness in the range from 0.1 to about 1 μm (Schnaiter et al., 2016). Therefore, it is justified to use k_e as a measure of ice crystal mesoscopic complexity. However, it should be noted that k_e is an optical parameter and cannot be directly translated into a physical complexity measure or to a distortion parameter used in optical particle models.

2.2 In situ measurements of the angular scattering function

The angular scattering functions of individual ice particles at 532 nm wavelength were measured with the PHIPS aircraft probe (Abdelmonem et al., 2016; Schnaiter et al., 2018). PHIPS is capable of measuring the angular scattering function of individual particles from 18 to 170° with a repetition rate as high as 13 kHz. The particle size range covered is from 10 μm to approximately 1 mm in diameter. Simultaneously, a stereoscopic image is taken for a subsample of particles. Examples of PHIPS images of tropical ice particles are presented in Fig. 1. Before analysis, particles corresponding to shattering events were removed by calculating particle interarrival times and removing particle pairs with interarrival times less than 1 ms.

The angular scattering measurements at 804 nm wavelength were taken with the PN (Gayet et al., 1997; Crépel et al., 1997). The PN measures the angular scattering coefficients of particle populations by integrating the measured signals of each detector over a period selected by the operator (typically 100 ms). The particle size range is from few micrometres to 1 mm. The scattering angles of PN cover values from 15 to 162° with a resolution of 3.5°. It is not possible to correct the PN data for shattering artefacts, but it has been estimated that shattering artefacts contribute less than 25 % of the total extinction signal (Mioche et al., 2017).

2.3 Cloud chamber experiments

Cloud chamber experiments were performed to study the effect of growth conditions on the ice crystal mesoscopic complexity. These experiments were performed at the AIDA cloud simulation chamber of Karlsruhe Institute of Technology during a series of Rough ICE (RICE) experiments. A general description of the AIDA facility and instrumentation can be found in several publications (e.g. Möhler et al.,

Table 1. Summary of the AIDA experiments shown in Fig. 3. The second column gives the simulated degree of complexity, the third column the AIDA campaign name and AIDA experiment number. The fourth, fifth and sixth columns give the experiment start conditions: the start temperature, the used ice nuclei (IN) and the number concentration of the aerosol acting as cloud condensation nuclei (CCN).

	Simulated mesoscopic scale complexity	Campaign and experiment number	Starting temperature (K)	IN	CCN (cm^{-3})
AIDA hom.	severely complex	RICE03, 36	223	Sulfuric acid	105
AIDA het. 30 %	severely to medium complex	RICE03, 42	223	Soot	32
AIDA het. 20 %	medium complex to pristine	RICE03, 43	223	Soot	35
AIDA het. 1 %	pristine	RICE02, 08	223	Soot	52

2005; Wagner et al., 2011; Schnaiter et al., 2012) and a detailed description of the RICE experiments can be found in Schnaiter et al. (2016). Here, we compare field results of ice crystal complexity measurements to four laboratory experiments from Schnaiter et al. (2016) that represent simulations of pristine, pristine to medium complex, medium complex to severe complex and severe complex ice crystals (Table 1).

Each simulation experiment started with a pre-cooled and pre-humidified chamber (temperature of 223 K and relative humidity with respect to ice, RH_{ice} , of 100 %). Before the experiment, the chamber was filled with either sulfuric acid solution droplets for simulations of homogeneous freezing, or with soot aerosol particles for simulations of heterogeneous deposition mode freezing. In the first experiment phase the aerosol was activated by expanding the chamber volume through evacuation. During the initial activation, the ice particle growth conditions cannot be controlled and, therefore, a subsequent sublimation is needed to remove any morphological features related to the initial growth. In the second phase, the ice particles were reduced in size before they were, in the third experiment phase, regrown at a stable ice supersaturation. During the regrowth period the ice particles were analysed in terms of their mesoscopic complexity.

2.4 Sampled clouds and definitions

Field measurements of ice crystal mesoscopic complexity were taken between 2011 and 2017 in the Mid-latitude Airborne Cirrus Properties Experiment (MACPEX) (Jensen et al., 2013), the Mid Latitude Cirrus (ML-CIRRUS) campaign (Voigt et al., 2017), the Aerosol, Cloud, Precipitation, and Radiation Interactions and Dynamics of Convective Cloud Systems Cloud processes of the main precipitation systems in Brazil: A contribution to cloud resolving modeling and to the GPM (Global Precipitation Measurement) (ACRIDICON-CHUVA) campaign (Wendisch et al., 2016), the Radiation-Aerosol-Cloud Experiment in the Arctic Circle (RACEPAC) campaign (Costa et al., 2017) and the Arctic Cloud Observations Using airborne measurements during polar Day (ACLOUD) campaign (Wendisch et al., 2018). The field measurements of angular scattering functions were taken between 1998 and 2017 in the Interhemispheric Dif-

ferences in Cirrus Properties from Anthropogenic Emissions (INCA) project (Shcherbakov et al., 2005), the midlatitude campaign CIRRUS'98 (Jourdan et al., 2003), the Arctic Study on Tropospheric Aerosol and Radiation (ASTAR) campaign (Jourdan et al., 2010), the Contrail and Cirrus Experiments (CONCERT) 1 and 2 (Chauvigné et al., 2018), the tropical campaign ACRIDICON-CHUVA, the Airborne Research Instrumentation Testing Opportunity (ARISTO2017), the Arctic campaign ACLOUD and, the Southern Ocean Clouds, Radiation, Aerosol Transport Experimental Study (SOCRATES).

In this paper the microphysical and optical properties of ice particles are reported in high-altitude clouds, in boundary layer stratocumulus clouds and in one nimbostratus cloud. The temperature ranges covered in each campaign are shown in Table 2. High-altitude clouds were sampled in the tropical campaign ACRIDICON-CHUVA, in the midlatitude campaigns ML-CIRRUS, MACPEX, ARISTO 2017, CIRRUS'98 and CONCERT, as well as in the Southern Ocean campaign SOCRATES and in the northern and southern hemispheric campaign INCA. From these observations, only segments in fully glaciated parts were selected for analysis. This included measurements above -40°C and, therefore, in this study the more general term “ice clouds” is used instead of “cirrus clouds”.

Boundary layer stratocumulus clouds were sampled in the Arctic campaigns RACEPAC and ACLOUD, and in the Southern Ocean campaign SOCRATES. Different approaches were applied to select ice particles for the analysis. For the SID-3, a manual inspection of the single-particle 2-D scattering patterns was carried out for the RACEPAC and ACLOUD flights, in which ice was observed. The complexity analysis was performed only for scattering patterns classified manually as ice. To calculate a representative angular scattering function for boundary layer stratocumulus ice particles, the PHIPS single-particle angular scattering functions from the ACLOUD and SOCRATES campaigns were first analysed for their shape. The shape of the rainbow feature, which is the slope between 106 and 138° , was used to discriminate between liquid droplets and ice particles. Only particles that were classified as ice using this algorithm were

Table 2. Overview of the measurement campaigns. Temperature range (minimum, maximum and mean) during measurements in ice containing clouds, the operated instrumentation, the number of ice particles included in the analysis and the percentage of ice particles rejected from the analysis owing to shattering. No particles were rejected from the SOCRATES data set since only PHIPS data sets with manually classified images were included.

Campaign	T_{\min} (K)	T_{\max} (K)	T_{mean} (K)	Instruments	Number of ice particles analysed	Percentage of ice particles rejected owing to shattering
ACRIDICON	198	240	216	SID-3, PHIPS	28 123 (SID-3), 78 177 (PHIPS)	1.33 % (SID-3), 29.6 % (PHIPS)
MAXPEC	205	240	227	SID-3	24 769	0.80 %
ML-CIRRUS	207	241	222	SID-3	9830	0.07 %
RACEPAC	260	273	267	SID-3	1069	19 %
ACLOUD	256	281	271	SID-3, PHIPS	2812 (SID-3), 20 610 (PHIPS)	7.46 % (SID-3), 22.3 % (PHIPS)
ARISTO 2017	215	259	239	PHIPS	9984	15.2 %
CIRRUS'98	218	233	230	PN	2000	–
ASTAR	265	271	268	PN	2000	–
CONCERT	213	258	227	PN	4500	–
INCA NH	208	240	227	PN	22 000	–
INCA SH	213	240	227	PN	32 000	–
SOCRATES	238	277	251	PHIPS	107 945	–

included in the analysis. In the Arctic campaigns, all the analysed ice particles were measured in a mixed-phase environment. Therefore, the term Arctic mixed-phase ice is used to label the PHIPS measurements. The PHIPS measurements in the Southern Ocean campaign SOCRATES include ice particles sampled both in high-altitude clouds and in boundary layer stratocumulus (mixed-phase) clouds. In this paper, one representative angular scattering function for the Southern Ocean SOCRATES campaign is shown.

An Arctic mixed-phase nimbostratus cloud was sampled during the ASTAR campaign. To retrieve a representative ice particle angular scattering function for Arctic ice particles, principal component analysis (Jourdan et al., 2003) was performed on the PN data measured at the glaciated top of this system. Since the cloud top was almost fully glaciated (Jourdan et al., 2010), the measurements are labelled in this paper as Arctic ice cloud.

2.5 Description of the ECHAM-HAM model

In our study, we used the ECHAM6.3-HAM2.3 global aerosol-climate model (based on Neubauer et al., 2014 with modifications). A 10-year simulation with $1.9^\circ \times 1.9^\circ$ horizontal resolution with 47 vertical levels was conducted from 2003 to 2012 after 3 months of spin-up time. The meteorology is nudged to ERA-Interim data (Dee et al., 2011), and sea surface temperature and sea ice cover were taken from observations. In the model the radiative transfer is computed for 14 SW bands (and 16 long-wave bands) (Pincus and Stevens, 2013). A competition between homogeneous and heterogeneous nucleation and pre-existing ice crystals (Kuebbeler et al., 2014; Gasparini and Lohmann, 2016) is considered. Enhancements in the vertical velocity over orography (Joos et al., 2008) are accounted for in the formation of cirrus clouds.

The ECHAM-HAM model is used to calculate the SWCRE of the ice clouds, which is computed online by calling the radiation subroutine twice. The first call is with clouds (all-sky) and the second call is without clouds (clear-sky) in the atmosphere. The first call uses the standard model parameterization for the SW asymmetry factors of ice clouds. The radiative fluxes from this call to the radiation subroutine are used to advance the model simulations. The cloud radiative effects are computed as the difference between the all-sky minus the clear-sky fluxes. To estimate the change in SWCRE by changing the SW asymmetry factors of ice clouds an additional (third) call to the radiation subroutine is conducted. The additional (diagnostic) call to the radiation subroutine is identical to the first call except that it uses the new parameterization for the SW asymmetry factors of ice clouds. The radiative fluxes from this additional call are only diagnostic. The SWCRE using the new parameterization for the SW asymmetry factors of ice clouds is computed from the difference in SW radiative flux at the top of the atmosphere from the additional call and the cloud-free SW radiative flux at the top of the atmosphere.

3 In situ measurements

3.1 Globally distributed in situ observations of ice crystal mesoscopic complexity

The tracks of the measurement flights, where ice crystal mesoscopic complexity was studied, are shown in Fig. 2. The tropical data set collected during ACRIDICON-CHUVA campaign consists mainly of measurements in anvil cirrus but also includes two cases of synoptic cirrus. The dominant ice crystal habits in the anvil cirrus were found to be plates and aggregates of plates, whereas synoptic cirrus was

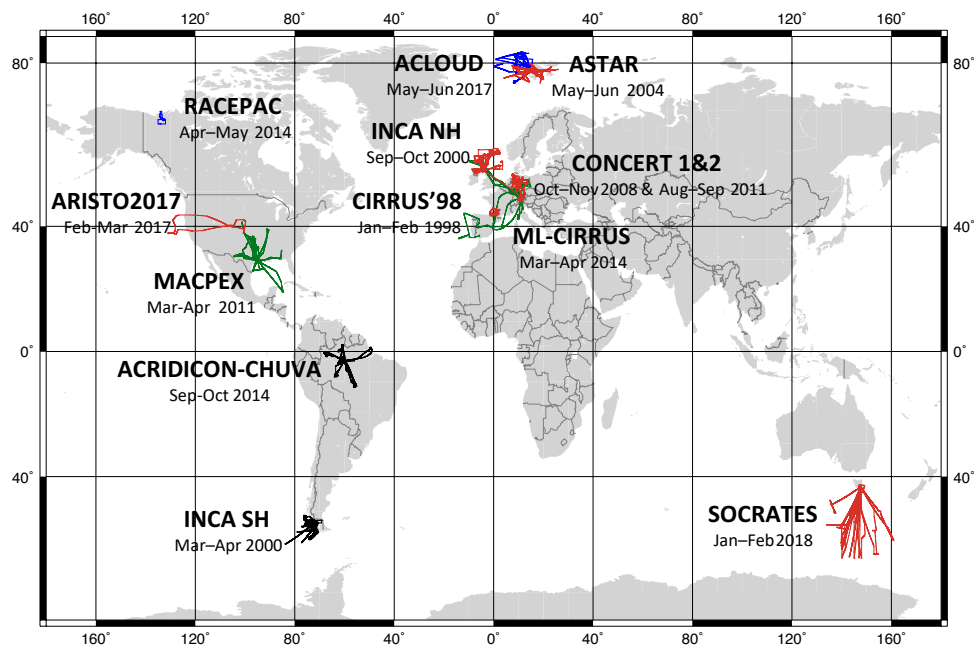


Figure 2. Flight trajectories of all campaigns included in this study. Trajectories of the campaigns where ice crystal mesoscopic complexity was investigated are marked with black, purple and blue matching the colours used in Fig. 3. Trajectories of the campaigns where only angular scattering function was measured are marked with red. Simultaneous mesoscopic complexity measurements and angular scattering measurements were taken in ACRIDICON-CHUVA and ACLOUD campaigns.

composed of bullet rosettes and columnar ice crystals (examples of ice particles in a tropical in situ cirrus can be found in Fig. 1). The observations of the crystal habits agree with previous observations in convective and synoptic systems (McFarquhar and Heymsfield, 1996; Heymsfield et al., 2002; Connolly et al., 2005; Lawson et al., 2006). In contrast to the tropical cirrus, the ice crystals measured in the ML-CIRRUS campaign were formed in more moderate updrafts in synoptic systems, such as warm conveyor belts or in the jet stream. During MACPEX, the second campaign in midlatitudes analysed here, dominant cirrus types were either anvil or jet stream cirrus associated with spring storm systems (Schmitt et al., 2016b). The northernmost campaigns targeted springtime Arctic boundary layer stratocumulus clouds from northern Canada (RACEPAC) and from Svalbard, Norway (ACLOUD). In ACLOUD, the ice crystals were found at temperatures between -3 and -10 °C, where the most common ice crystal shapes were (hollow) rimed needles or plates (Schnaiter et al., 2018).

Only ice crystals in the sub- $50\mu\text{m}$ size range were selected from the data obtained during these campaigns. In this size range, ice particles are single crystals (Schmitt et al., 2016a) and, therefore, complexity is observed in the mesoscopic scale and is not caused by aggregate structures. Based on laboratory calibrations (Schnaiter et al., 2016) the measured ice crystals can be divided into pristine ($k_e < 4.6$) and complex ($k_e \geq 4.6$). Statistical analysis of the single-particle complexity parameters measured in the different campaigns

are shown in Fig. 3. This analysis reveals that a majority, between 61 % and 81 %, of the ice crystals with sizes below $50\mu\text{m}$, can be classified as complex with median complexity parameters above the defined threshold of $k_e \geq 4.6$. In spite of the obvious differences in the ice crystal habits due to the different formation pathways, the median complexity parameters have similar values in all campaigns. The maximum difference in the median complexity parameter was found to be 0.23, which roughly corresponds to a change of 0.05 in distortion parameter (σ) (Schnaiter et al., 2016) or $0.04\mu\text{m}$ in physical surface roughness (Lu et al., 2006).

Even though the method is limited to the study of mesoscopic complexity of small ($< 50\mu\text{m}$) ice particles, it can be postulated that the results also give indications of the structural complexity of ice particles larger than $50\mu\text{m}$. Larger ice particles are frequently aggregates, composed of small single habits with mesoscopic complexity that can be measured (Schmitt et al., 2016b). It can be assumed that an aggregated ice crystal has the same or even higher degree of mesoscopic complexity as the single habits composing it and, therefore, the asymmetry factor of aggregated crystals is similar to or lower than that of the component particles (Yang et al., 2013; Um and McFarquhar, 2009). For example, light-scattering calculations have shown that the scattering properties of aggregated hexagonal ice crystals differ only a little (around 0.3 % at 550 nm) from those of their component particles (Um and McFarquhar, 2009).

3.2 Comparison of the field observations to laboratory simulation experiments

In Fig. 3, the atmospheric measurements are compared to four laboratory cirrus cloud experiments performed in the AIDA cloud chamber. In the cloud chamber experiments ice crystals were nucleated either homogeneously or heterogeneously at temperatures around 223 K, with a subsequent growth at a defined ice saturation ratio (S_{ice}) ranging from near ice saturation to 30 % ice supersaturation (Schnaiter et al., 2016). The homogeneous freezing case (AIDA hom.) resulted in the highest degree of mesoscopic complexity (median k_e of 5.33) even at moderate growth conditions (S_{ice} of 1.1), whereas the degree of mesoscopic complexity in the case of heterogeneous freezing (AIDA het.) was dependent on the ice supersaturation ratio during crystal growth. The measured median k_e values were 4.91, 4.68 and 4.22 for experiments where the crystal growth took place at 30 %, 20 % and 1 % supersaturated conditions, respectively. The difference in the physical surface roughness, as defined by Lu et al. (2006), between the AIDA het. 30 % and AIDA het. 1 % experiments would roughly be 0.12 μm . A similar enhancement in mesoscopic complexity in homogeneously formed ice crystals has previously been found in midlatitude cirrus (Ulanowski et al., 2014) and can be partly explained by an increased stacking disorder of homogeneously nucleated ice crystals (Malkin et al., 2012). The median and the interquartile range of the k_e from the field observations agree best with the laboratory simulations of heterogeneous freezing where ice crystals were grown at relatively high S_{ice} of 1.3 (Fig. 3). However, it has to be taken into account that in the atmosphere ice crystals can undergo several growth and sublimation cycles that contribute to the formation of additional crystal complexity after the initial growth (Magee et al., 2014; Voigtländer et al., 2018).

3.3 Measurements of the angular scattering function

Our field results show that the degree of ice crystal mesoscopic complexity is always above the threshold value of 4.6 and show less variation with geographical location than the variations observed in the laboratory simulations. However, for estimating the ice cloud radiative effect it is crucial to understand how this microphysical observation affects the radiative properties of cirrus and mixed-phase clouds. Figure 4 shows field and laboratory measurements of volumetric angular scattering functions at two solar wavelengths for a particle size range from 10 μm to 1 mm in diameter. Each function represents the median over a whole campaign or over one geographical location. The measured angular scattering functions are flat and featureless. Studies with optical particle models (Doutriaux-Boucher et al., 2000; C-Labonnote et al., 2001; Baum et al., 2010; Jourdan et al., 2010; Yang et al., 2013; Liu et al., 2014a, b; Letu et al., 2016; Tang et al., 2017) show that the flattening of the angular scattering function at

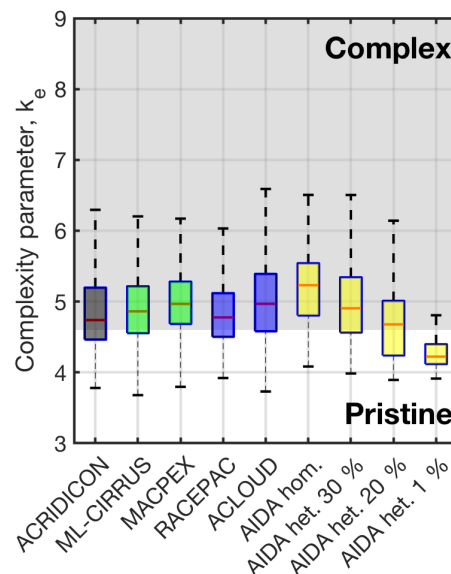


Figure 3. Statistical analysis of ice crystal complexity from all measured ice particles in the aircraft campaigns and from four AIDA cloud chamber simulation experiments. The box edges represent the 25 % and 75 % quartiles and the dashed lines the 5 % and 95 % quartiles. The red lines represent the median values. The grey area indicates the range of the complexity parameter in which the ice crystals are characterized to be complex. The median complexity parameters were found to be 4.74 in ACRIDICON-CHUVA, 4.86 in ML-CIRRUS, 4.97 in MACPEX, 4.78 in RACEPAC and 4.97 in ACLLOUD.

the sideward angles can be reproduced by ice particles with a high degree of crystal complexity, which is in accordance with our observations. More importantly, the ensemble angular scattering functions at both solar wavelengths are almost identical irrespective of the geographical location. Although ice crystal habits differ significantly in convective outflows, in situ cirrus or in boundary layer stratocumulus clouds, this shows that their angular scattering behaviour is governed by the mesoscopic features of the crystals.

3.4 Comparison of the measured angular scattering functions to a light-scattering database

The measured angular scattering functions at the two wavelengths were compared to theoretical phase functions for different habits calculated using the database of Yang et al. (2013). In accordance with our observations, only severely roughened habits were considered in the theoretical calculations. For generation of the theoretical phase functions a representative ice particle size distribution from the ACRIDICON-CHUVA campaign was used. The size distribution was determined from the PHIPS images by analysing the maximum dimension of each imaged ice particle using an algorithm developed by Schön et al. (2011). Furthermore, the sensitivity of the theoretical phase function to the assumed

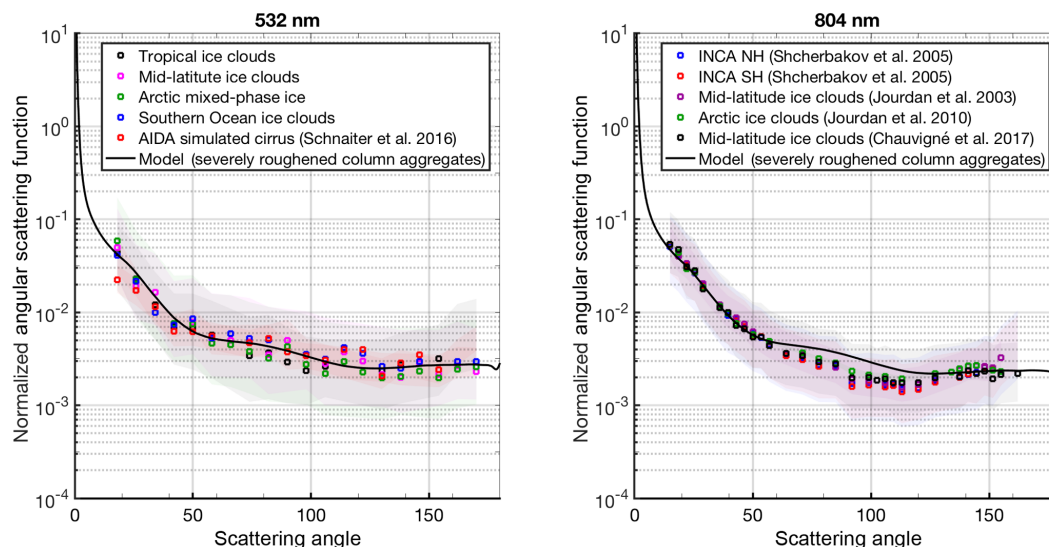


Figure 4. Ensemble angular scattering functions of natural and laboratory-generated ice particles measured at two wavelengths. Each function represents the median angular scattering function over a single campaign and is normalized to the total intensity between 18° and 170° . The shaded area represents the interquartile range. The measurements at 532 nm in tropical cirrus, Arctic boundary layer stratocumulus clouds as well as the measurements in laboratory-simulated cirrus were gathered together with the complexity measurements in the ACRIDICON-CHUVA, ALOUD and AIDA campaigns. The midlatitude and Southern Ocean measurements at 532 nm were taken during the ARISTO campaign in 2017 and during the SOCRATES campaign, respectively. The measurements at 804 nm were taken between 1997 and 2011 in the CIRRUS'98, INCA, ASTAR and CONCERT aircraft campaigns.

size distribution was investigated and it was found that the shape of the phase function was insensitive to small changes in the median diameter. Figures 5 and 6 show the measured and normalized volumetric angular scattering functions for 532 and 804 nm and the theoretical phase functions for nine different habits.

Based on the comparison, the severely roughened column aggregate model was found to best represent the measurement at both wavelengths. At 532 nm the theoretical calculations agree with the measurements over the whole measurement range, whereas at 804 nm the model predicts slightly higher intensity in the sideward angles between 57° and 126° but is within the measured interquartile range (Fig. 6). The calculated root mean square errors (RMSEs) between the severely roughened column aggregate model and the mean of the measurements are the lowest (0.0017 and 0.0014 for 532 and 804 nm, respectively) compared to the other models (RMSEs between 0.0022 and 0.0111 for 532 nm, and 0.0037 and 0.0208 for 804 nm). At the angles around exact backscattering, the severely roughened column aggregate model predicts a relatively flat behaviour. However, recent modelling studies have indicated that the scattering intensities around exact backscattering angles should be enhanced due to coherent scattering (e.g. Zhou, 2018). Although this effect can be important for lidar applications, it does not significantly affect the redistribution of the energy in the scattering process and, thus, the magnitude of the asymmetry factor. Furthermore, comparisons of satellite retrievals of cloud polariza-

tion properties with light-scattering simulations have shown that optical particle models using severely roughened crystals yield the best agreement (Baum et al., 2011; Yang et al., 2013; Tang et al., 2017) and the current MODIS retrievals are based on the same optical particle model of severely roughened hexagonal aggregates that is used here (Platnick et al., 2017).

4 Estimating the effect of the observed mesoscopic complexity to SWCRE

An important consequence of severely roughened and complex ice crystals is that the cloud asymmetry factor in the solar spectral range is lowered compared to pristine ice crystals (e.g. Macke et al., 1996; Yang and Liou, 1998; Liou et al., 2000; Baum et al., 2010, 2011; Baran, 2012; van Diedenhoven et al., 2012; Yang et al., 2013). For example, the severely roughened hexagonal aggregate model has relatively low asymmetry factors of 0.750 and 0.754 for 532 and 804 nm, respectively. To understand the relevance of our observations for climate projections, the effect of the observed decrease in the cloud asymmetry factor on the SWCRE was estimated by newly parameterizing the SW asymmetry factors using the optical model with the best fit to our measurements in the ECHAM-HAM global climate model. The current optical parameterization in the ECHAM-HAM model is calculated based on spherical particles using Mie theory with the exception that the asymmetry factors are scaled down

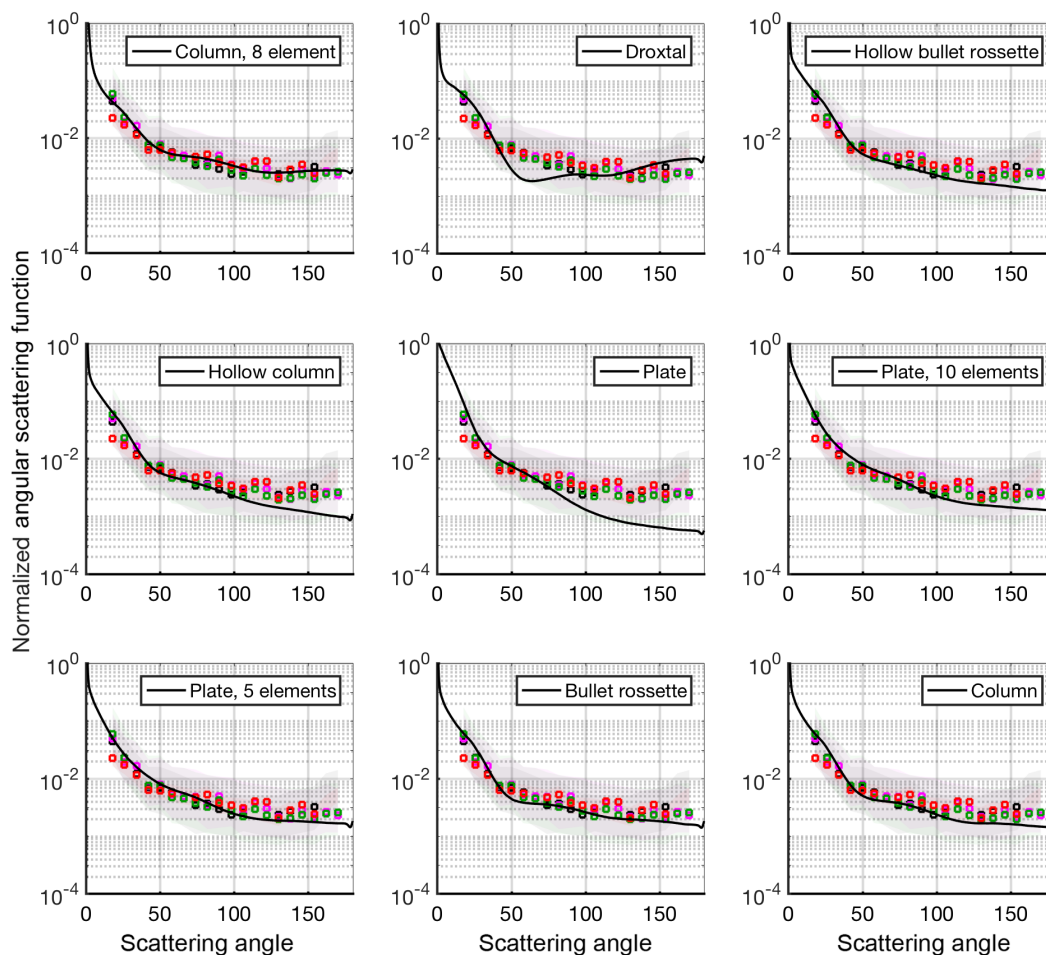


Figure 5. A comparison of the measured angular scattering functions at 532 nm (data from first panel of Fig. 4) and theoretical phase functions for different habits calculated using the database of Yang et al. (2013) and assuming a size distribution as measured during the ACRIDICON-CHUVA campaign. All calculations were made assuming severely roughened surfaces. Both the measurements and the model results are normalized to the total intensity between 18 and 170°.

to be more representative for aspherical ice particles. The steps to retrieve the new parameterization are discussed in Sect. 4.1. The sensitivity of a global climate model to the ice particle surface roughness has already been tested in the study of Yi et al. (2013), where the difference in the SWCRE was first calculated for assuming completely smooth particles and later for severely roughened ice particles. Here, we compare the existing standard parameterization of SW asymmetry factors to our new parameterization and, in this way, estimate the possible impact of the observed ice crystal mesoscopic complexity on the SWCRE.

4.1 Derivation of the new parameterization of the short-wave asymmetry factor for the ECHAM-HAM model and comparison with the standard parameterization

Figure 4 showed that the observed high degree of mesoscopic complexity dominates the angular scattering function over the ice crystal shape, and a uniform angular scattering function is observed at two wavelengths (532 and 804 nm). Therefore, it is justified to use a single-habit optical ice particle model assuming severely roughened surfaces to compute the bulk optical properties of ice clouds. It was found that the severely roughened column aggregate model showed the best fit of the atmospheric measurements taken at both wavelengths. At 804 nm the model disagreed slightly with the measurements at the sideward angles (Figs. 4 and 6). This disagreement indicates that either the severely roughened column aggregate model does not accurately represent the

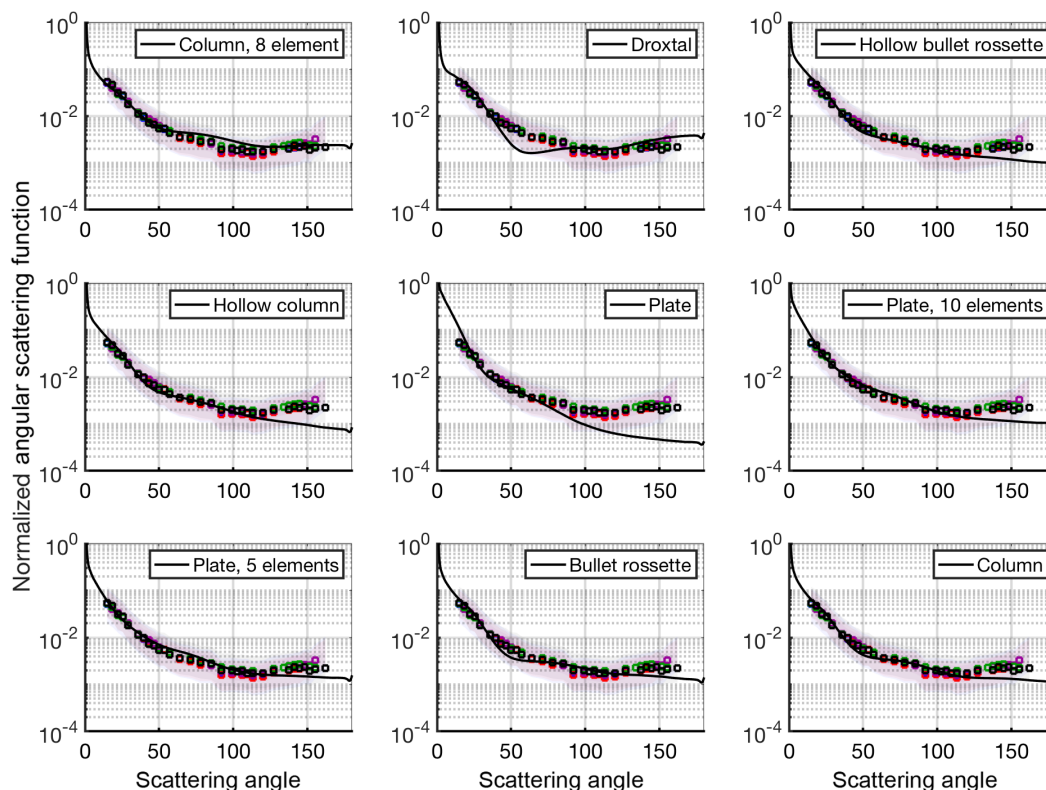


Figure 6. Same as Fig. 5 but now showing the comparison for PN measurements and for different optical models calculated for 804 nm. All calculations were made assuming severely roughened surfaces. Both the measurements and the model results are normalized to the total intensity between 15 and 155°.

spectral dependence of the asymmetry factors or it could also be related to systematic measurement uncertainties caused by using different measurement systems. However, since we only have information on the ice particle angular scattering properties at two wavelengths at the moment, only one optical particle model is used to parameterize the asymmetry factors.

Gamma particle size distributions with a variance of 0.1 were used to calculate the bulk asymmetry factors at each wavelength for different effective radii ranging from 4 to 124 μm . The comparison of the standard parameterization in ECHAM-HAM for the SW asymmetry factors and the new parameterization using the severely roughened column aggregate model is shown for selective wavelength bands in Fig. 7. As expected, the new asymmetry factors are lower than what is assumed in the standard parameterization, except for the 3.47 μm band. Another consequence of the particle roughening is that the size dependence of the asymmetry factor becomes weaker, and for submicron wavelength bands (0.23, 0.4 and 0.7 μm) almost no size dependence is observed. It seems that due to mesoscopic complexity the ice cloud asymmetry factors are not so sensitive to habits or particle size, whereas previous studies on smooth ice crystal have shown that different parameterizations using different

habits or habit mixtures can cause significant variance in the asymmetry factor by 0.07 in the wavelength band of 0.25 to 0.69 μm (McFarquhar et al., 2002). This variance becomes especially significant for small ice particles, with effective radius below 20 μm , where the largest uncertainty in the exact particle shape also exists.

4.2 Influence of ice crystal mesoscopic complexity to the cloud short-wave radiative effect

The change in the global SWCRE after applying the new parameterization to all ice clouds (cirrus and mixed-phase) is shown in Fig. 8. The global mean change in the SWCRE is -1.12 W m^{-2} , but regionally it can be as large as -8 W m^{-2} . If the new parameterization is applied only to cirrus clouds, the mean change in the SWCRE is slightly lower, -1.00 W m^{-2} . Therefore, the change in the asymmetry factor mostly affects the cirrus SWCRE and the largest effect is found in the tropical regions where the cirrus occurrence is also highest (e.g. Sassen et al., 2008). Even though the change in the global SWCRE is small compared to the global mean SWCRE of all clouds of about -50 W m^{-2} (Boucher et al., 2013) or to the global mean SWCRE of ice clouds of about $16.7 \pm 1.7 \text{ W m}^{-2}$ (Hong et al., 2016), it is approximately one-

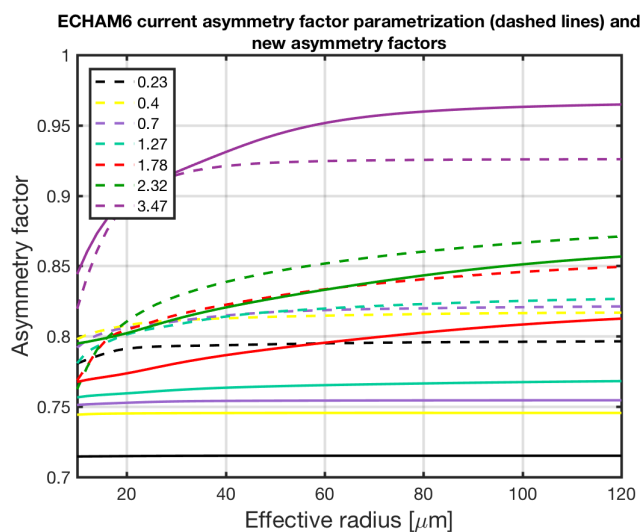


Figure 7. Comparison of the standard parameterization in ECHAM-HAM of the asymmetry factor of ice particle with different effective radius (dashed lines) and the new parameterization using severely roughened column aggregates (solid lines) for different wavelength bands. The wavelength bands are named after the band effective wavelength.

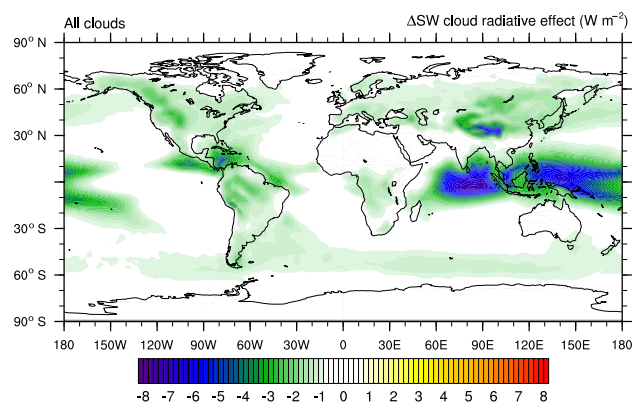


Figure 8. The global change in the SW cloud radiative effect predicted by the ECHAM-HAM model when the standard parameterization of the SW asymmetry factor is substituted by the parameterization using severely roughened ice particles. In this simulation the new SW asymmetry factors were applied to all ice particles both in cirrus and in mixed-phase clouds.

fourth of the global mean cirrus SWCRE of -4 W m^{-2} (Gasparini and Lohmann, 2016) and comparable to the total direct radiative effect of aerosols ($-2.1 \pm 0.7 \text{ W m}^{-2}$) (Lacagnina et al., 2017). The enhanced SW cooling might have important implications for understanding the cirrus CRE, not only on a global scale but also on regional scales. For example, the increased reflectivity might change our assessment of the sign of the cloud radiative effect by thin cirrus. So far, thin cirrus has been considered to have a modest but positive cloud radiative effect (around 0.7 W m^{-2}) (McFarquhar et al.,

2000), but our results suggest that this needs to be reconsidered.

5 Conclusions

Current satellite retrievals and a growing number of climate models have already started using optical parameterizations assuming severely roughened ice crystals to reproduce the observed flat angular scattering function of ice particles. However, this study gives the first direct observational evidence of ice crystal complexity and links it to an angular scattering function with low asymmetry factor. The results presented here show that optical models assuming severe roughness can represent the angular scattering function in many geographical locations with sufficient accuracy. Thus, based on observational evidence, the current uncertainty in the degree of surface roughness of natural ice particles (Cole et al., 2014) can be significantly reduced. Moreover, since the ice particle angular scattering functions did not vary significantly between different geographical locations, the modelling efforts of ice particle optical properties in future weather forecast and climate models will be simplified.

In situ measurements of the mesoscopic complexity using the SID-3 instrument showed that the majority of measured ice crystals can be classified as complex. The limitation of this method is that only small ($< 50 \mu\text{m}$) ice crystals can be analysed, and no direct evidence of the mesoscopic complexity of larger ($> 50 \mu\text{m}$) ice crystals can be obtained. However, the angular scattering measurements show indirect evidence that larger ice particles are also likely complex. This can be seen from Fig. 4 by comparing the angular scattering functions of laboratory-generated sub- $50 \mu\text{m}$ ice particles and those of natural ice particles. Although the field observations include a wider size range of ice crystals from a few tens of microns up to a millimetre, no difference can be observed in the shape-sensitive sideward angular scattering behaviour between laboratory-generated single habits and field observations.

Our modelling results showed that the observed ice particle mesoscopic complexity can significantly affect the SWCRE due to lowering of the cloud asymmetry factor. The magnitude of the change in the SWCRE of -1.12 W m^{-2} is significant, but in order to estimate the role of ice crystal mesoscopic complexity for climate projections, future simulations with severely roughened ice crystals in a warmer climate are needed.

Data availability. The SID-3 complexity analysis results from ML-CIRRUS and ACRIDICON-CHUVA are available from the HALO database (<https://halo-db.pa.op.dlr.de>, last access: 19 October 2018). The PHIPS data and SID-3 data from other campaigns are available upon request from Martin Schnaiter (martin.schnaiter@kit.edu).

Author contributions. EJ and MS collected and analysed the SID-3 and PHIPS data from aircraft and AIDA campaigns. OJ provided the PN data. BY and CL performed the optical modelling for retrieval of the asymmetry factors and created the new parameterization of the asymmetry factors for the ECHAM-HAM model. DN and UL performed the ECHAM-HAM model runs. EJ, MS, OJ, DN, CL, MA, UL, MW, GM and TL were involved in the scientific interpretation and discussion. EJ wrote the manuscript with help from OJ and DN. All commented on the paper.

Competing interests. The authors declare that they have no conflict of interest.

Acknowledgements. We gratefully acknowledge Steffen Münch for implementing the used cirrus scheme into ECHAM-HAM. We would also like to thank all participants of the field studies for their efforts, in particular the technical crews of the HALO, AWI Polar 6 and Polar 2, TBM700, DLR Falcon, NASA WB-57 and NSF G-V. This work has received funding from the Helmholtz Research Program Atmosphere and Climate, the German Research Foundation (DFG grants SCHN 1140/1-1, SCHN 1140/1-2, SCHN 1140/3-1) within the DFG priority program 1294 (HALO), the German Max Planck Society, the CNES (Centre National des Etudes Spatiales) and The Centre National de la Recherche Scientifique – Institut National des Sciences de l’Univers (CNRS-INSU) within the Expecting EarthCare Learning from A-Train (EECLAT) project (contract no. 4500054452 BCT_69 2017), the Swiss National Supercomputing Centre (CSCS, project ID s652), the Swiss National Science Foundation (project number 200021_160177) and the National Natural Science Foundation of China (grant no. 41571348) and by the United States National Science Foundation grants 1660544, 1628674 and 1762096. We gratefully acknowledge the National Science Foundation (NSF) for providing access to the HIAPER aircraft during the ARISTO 2017 project and the support from DFG within the Transregional Collaborative Research Center (TR 172) “Arctic Amplification: Climate Relevant Atmospheric and Surface Processes, and Feedback Mechanisms (AC)³” for providing access to the AWI Polar-6 aircraft during the ALOUD project. The ECHAM-HAMMOZ model is developed by a consortium composed of ETH Zürich, Max Planck Institut für Meteorologie, Forschungszentrum Jülich, University of Oxford, the Finnish Meteorological Institute and the Leibniz Institute for Tropospheric Research, and managed by the Center for Climate Systems Modeling (C2SM) at ETH Zürich.

The article processing charges for this open-access publication were covered by a Research Centre of the Helmholtz Association.

Edited by: Timothy Garrett

Reviewed by: three anonymous referees

References

- Abdelmonem, A., Järvinen, E., Duft, D., Hirst, E., Vogt, S., Leisner, T., and Schnaiter, M.: PHIPS-HALO: the airborne Particle Habit Imaging and Polar Scattering probe – Part 1: Design and operation, *Atmos. Meas. Tech.*, 9, 3131–3144, <https://doi.org/10.5194/amt-9-3131-2016>, 2016.
- Baran, A. and Francis, P.: On the radiative properties of cirrus cloud at solar and thermal wavelengths: A test of model consistency using high-resolution airborne radiance measurements, *Q. J. Roy. Meteor. Soc.*, 130, 763–778, 2004.
- Baran, A., Francis, P., Labonnote, L.-C., and Doutriaux-Boucher, M.: A scattering phase function for ice cloud: Tests of applicability using aircraft and satellite multi-angle multi-wavelength radiance measurements of cirrus, *Q. J. Roy. Meteor. Soc.*, 127, 2395–2416, 2001.
- Baran, A. J.: From the single-scattering properties of ice crystals to climate prediction: A way forward, *Atmos. Res.*, 112, 45–69, 2012.
- Baran, A. J. and Labonnote, L. C.: On the reflection and polarisation properties of ice cloud, *J. Quant. Spectrosc. Ra.*, 100, 41–54, 2006.
- Baum, B. A., Yang, P., Hu, Y.-X., and Feng, Q.: The impact of ice particle roughness on the scattering phase matrix, *J. Quant. Spectrosc. Ra.*, 111, 2534–2549, 2010.
- Baum, B. A., Yang, P., Heymsfield, A. J., Schmitt, C. G., Xie, Y., Bansemmer, A., Hu, Y.-X., and Zhang, Z.: Improvements in short-wave bulk scattering and absorption models for the remote sensing of ice clouds, *J. Appl. Meteorol. Clim.*, 50, 1037–1056, 2011.
- Boucher, O., Randall, D., Artaxo, P., Bretherton, C., Feingold, G., Forster, P., Kerminen, V.-M., Kondo, Y., Liao, H., Lohmann, U., Rasch, P., Satheesh, S. K., Sherwood, S., Stevens, B., and Zhang, X.Y.: Clouds and aerosols in climate change 2013, in: *The Physical Science Basis. Contribution of Working Group I to the Fifth Assessment Report of the Intergovernmental Panel on Climate Change*, edited by: Stocker, T. F., Qin, D., Plattner, G.-K., Tignor, M., Allen, S. K., Boschung, J., Nauels, A., Xia, Y., Bex, V., and Midgley, P. M., Cambridge University Press Cambridge, United Kingdom and New York, NY, USA, 2013.
- Chauvigné, A., Jourdan, O., Schwarzenboeck, A., Gourbeyre, C., Gayet, J. F., Voigt, C., Schlager, H., Kaufmann, S., Borrmann, S., Molleker, S., Minikin, A., Jurkat, T., and Schumann, U.: Statistical analysis of contrail to cirrus evolution during the Contrail and Cirrus Experiment (CONCERT), *Atmos. Chem. Phys.*, 18, 9803–9822, <https://doi.org/10.5194/acp-18-9803-2018>, 2018.
- C-Labonnote, L., Brogniez, G., Buriez, J.-C., Doutriaux-Boucher, M., Gayet, J.-F., and Macke, A.: Polarized light scattering by inhomogeneous hexagonal monocrystals: Validation with ADEOS-POLDER measurements, *J. Geophys. Res.*, 106, 12139–12153, 2001.
- Cole, B. H., Yang, P., Baum, B. A., Riedi, J., and C-Labonnote, L.: Ice particle habit and surface roughness derived from PARASOL polarization measurements, *Atmos. Chem. Phys.*, 14, 3739–3750, <https://doi.org/10.5194/acp-14-3739-2014>, 2014.
- Connolly, P., Saunders, C., Gallagher, M., Bower, K., Flynn, M., Choulaton, T., Whiteway, J., and Lawson, R.: Aircraft observations of the influence of electric fields on the aggregation of ice crystals, *Q. J. Roy. Meteor. Soc.*, 131, 1695–1712, 2005.

- Costa, A., Meyer, J., Afchine, A., Luebke, A., Günther, G., Dorsey, J. R., Gallagher, M. W., Ehrlich, A., Wendisch, M., Baumgardner, D., Wex, H., and Krämer, M.: Classification of Arctic, midlatitude and tropical clouds in the mixed-phase temperature regime, *Atmos. Chem. Phys.*, 17, 12219–12238, <https://doi.org/10.5194/acp-17-12219-2017>, 2017.
- Cotton, R., Osborne, S., Ulanowski, Z., Hirst, E., Kaye, P. H., and Greenaway, R.: The ability of the Small Ice Detector (SID-2) to characterize cloud particle and aerosol morphologies obtained during flights of the FAAM BAe-146 research aircraft, *J. Atmos. Ocean. Tech.*, 27, 290–303, 2010.
- Crépel, O., Gayet, J.-F., Fournol, J.-F., and Oshchepkov, S.: A new airborne Polar Nephelometer for the measurement of optical and microphysical cloud properties. Part II: Preliminary tests, *Ann. Geophys.*, 15, 460–470, 1997.
- Dee, D. P., Uppala, S., Simmons, A., et al.: The ERA-Interim reanalysis: Configuration and performance of the data assimilation system, *Q. J. Roy. Meteor. Soc.*, 137, 553–597, 2011.
- Doutriaux-Boucher, M., Buriez, J.-C., Brogniez, G., Laurent, C., and Baran, A. J.: Sensitivity of retrieved POLDER directional cloud optical thickness to various ice particle models, *Geophys. Res. Lett.*, 27, 109–112, 2000.
- Febvre, G., Gayet, J.-F., Minikin, A., Schlager, H., Shcherbakov, V., Jourdan, O., Busen, R., Fiebig, M., Kärcher, B., and Schumann, U.: On optical and microphysical characteristics of contrails and cirrus, *J. Geophys. Res.*, 114, D02204, <https://doi.org/10.1029/2008JD010184>, 2009.
- Gasparini, B. and Lohmann, U.: Why cirrus cloud seeding cannot substantially cool the planet, *J. Geophys. Res.-Atmos.*, 121, 4877–4893, 2016.
- Gayet, J.-F., Crépel, O., Fournol, J., and Oshchepkov, S.: A new airborne polar Nephelometer for the measurements of optical and microphysical cloud properties. Part I: Theoretical design, *Ann. Geophys.*, 15, 451–459, 1997.
- Gayet, J.-F., Shcherbakov, V., Mannstein, H., Minikin, A., Schumann, U., Ström, J., Petzold, A., Ovarlez, J., and Immler, F.: Microphysical and optical properties of midlatitude cirrus clouds observed in the southern hemisphere during INCA, *Q. J. Roy. Meteor. Soc.*, 132, 2719–2748, 2006.
- Gerber, H., Takano, Y., Garrett, T. J., and Hobbs, P. V.: Nephelometer measurements of the asymmetry parameter, volume extinction coefficient, and backscatter ratio in Arctic clouds, *J. Atmos. Sci.*, 57, 3021–3034, 2000.
- Heymsfield, A. J. and Platt, C.: A parameterization of the particle size spectrum of ice clouds in terms of the ambient temperature and the ice water content, *J. Atmos. Sci.*, 41, 846–855, 1984.
- Heymsfield, A. J., Bansemer, A., Field, P. R., Durden, S. L., Stith, J. L., Dye, J. E., Hall, W., and Grainger, C. A.: Observations and parameterizations of particle size distributions in deep tropical cirrus and stratiform precipitating clouds: Results from in situ observations in TRMM field campaigns, *J. Atmos. Sci.*, 59, 3457–3491, 2002.
- Hong, Y., Liu, G., and Li, J.-L.: Assessing the radiative effects of global ice clouds based on CloudSat and CALIPSO measurements, *J. Climate*, 29, 7651–7674, 2016.
- Jackson, R. C., McFarquhar, G. M., Stith, J., Beals, M., Shaw, R. A., Jensen, J., Fugal, J., and Korolev, A.: An assessment of the impact of antishattering tips and artifact removal techniques on cloud ice size distributions measured by the 2D cloud probe, *J. Atmos. Ocean. Tech.*, 31, 2567–2590, 2014.
- Jensen, E., Lawson, R., Bergman, J., Pfister, L., Bui, T., and Schmitt, C.: Physical processes controlling ice concentrations in synoptically forced, midlatitude cirrus, *J. Geophys. Res.-Atmos.*, 118, 5348–5360, 2013.
- Joos, H., Spichtinger, P., Lohmann, U., Gayet, J.-F., and Minikin, A.: Orographic cirrus in the global climate model ECHAM5, *J. Geophys. Res.*, 113, D18205, <https://doi.org/10.1029/2007JD009605>, 2008.
- Jourdan, O., Oshchepkov, S., Shcherbakov, V., Gayet, J.-F., and Isaka, H.: Assessment of cloud optical parameters in the solar region: Retrievals from airborne measurements of scattering phase functions, *J. Geophys. Res.*, 108, 4572, <https://doi.org/10.1029/2003JD003493>, 2003.
- Jourdan, O., Mioche, G., Garrett, T. J., Schwarzenböck, A., Vidot, J., Xie, Y., Shcherbakov, V., Yang, P., and Gayet, J.-F.: Coupling of the microphysical and optical properties of an Arctic nimbostratus cloud during the ASTAR 2004 experiment: Implications for light-scattering modeling, *J. Geophys. Res.*, 115, D23206, <https://doi.org/10.1029/2010JD014016>, 2010.
- Kaye, P. H., Hirst, E., Greenaway, R. S., Ulanowski, Z., Hesse, E., DeMott, P. J., Saunders, C., and Connolly, P.: Classifying atmospheric ice crystals by spatial light scattering, *Opt. Lett.*, 33, 1545–1547, 2008.
- Korolev, A., Isaac, G., and Hallett, J.: Ice particle habits in Arctic clouds, *Geophys. Res. Lett.*, 26, 1299–1302, 1999.
- Korolev, A., Emery, E., Strapp, J., Cober, S., Isaac, G., Wasey, M., and Marcotte, D.: Small ice particles in tropospheric clouds: Fact or artifact? Airborne Icing Instrumentation Evaluation Experiment, *B. Am. Meteorol. Soc.*, 92, 967–973, 2011.
- Kuebbeler, M., Lohmann, U., Hendricks, J., and Kärcher, B.: Dust ice nuclei effects on cirrus clouds, *Atmos. Chem. Phys.*, 14, 3027–3046, <https://doi.org/10.5194/acp-14-3027-2014>, 2014.
- Lacagnina, C., Hasekamp, O. P., and Torres, O.: Direct radiative effect of aerosols based on PARASOL and OMI satellite observations, *J. Geophys. Res.-Atmos.*, 122, 2366–2388, 2017.
- Lawson, R. P., Baker, B., Pilson, B., and Mo, Q.: In situ observations of the microphysical properties of wave, cirrus, and anvil clouds. Part II: Cirrus clouds, *J. Atmos. Sci.*, 63, 3186–3203, 2006.
- Letu, H., Ishimoto, H., Riedi, J., Nakajima, T. Y., C.-Labonnote, L., Baran, A. J., Nagao, T. M., and Sekiguchi, M.: Investigation of ice particle habits to be used for ice cloud remote sensing for the GCOM-C satellite mission, *Atmos. Chem. Phys.*, 16, 12287–12303, <https://doi.org/10.5194/acp-16-12287-2016>, 2016.
- Liou, K. N., Takano, Y., and Yang, P.: Light scattering by nonspherical particles: theory, measurements, and applications, edited by: Mishchenko, M. I., Hovenier, J. W., and Travis, L. D., Academic Press, San Diego, c2000, p. 418, 2000.
- Liu, C., Panetta, R. L., and Yang, P.: The effective equivalence of geometric irregularity and surface roughness in determining particle single-scattering properties, *Opt. Express*, 22, 23620–23627, 2014a.
- Liu, C., Yang, P., Minnis, P., Loeb, N., Kato, S., Heymsfield, A., and Schmitt, C.: A two-habit model for the microphysical and optical properties of ice clouds, *Atmos. Chem. Phys.*, 14, 13719–13737, <https://doi.org/10.5194/acp-14-13719-2014>, 2014b.

- Lu, R.-S., Tian, G.-Y., Gledhill, D., and Ward, S.: Grinding surface roughness measurement based on the co-occurrence matrix of speckle pattern texture, *Appl. Optics*, 45, 8839–8847, 2006.
- Macke, A., Mueller, J., and Raschke, E.: Single scattering properties of atmospheric ice crystals, *J. Atmos. Sci.*, 53, 2813–2825, 1996.
- Magee, N. B., Miller, A., Amaral, M., and Cumiskey, A.: Mesoscopic surface roughness of ice crystals pervasive across a wide range of ice crystal conditions, *Atmos. Chem. Phys.*, 14, 12357–12371, <https://doi.org/10.5194/acp-14-12357-2014>, 2014.
- Malkin, T. L., Murray, B. J., Brukhno, A. V., Anwar, J., and Salzmann, C. G.: Structure of ice crystallized from supercooled water, *P. Natl. Acad. Sci. USA*, 109, 1041–1045, 2012.
- McFarquhar, G. M. and Heymsfield, A. J.: Microphysical characteristics of three anvils sampled during the Central Equatorial Pacific Experiment, *J. Atmos. Sci.*, 53, 2401–2423, 1996.
- McFarquhar, G. M., Heymsfield, A. J., Spinhirne, J., and Hart, B.: Thin and subvisual tropopause tropical cirrus: Observations and radiative impacts, *J. Atmos. Sci.*, 57, 1841–1853, 2000.
- McFarquhar, G. M., Yang, P., Macke, A., and Baran, A. J.: A new parameterization of single scattering solar radiative properties for tropical anvils using observed ice crystal size and shape distributions, *J. Atmos. Sci.*, 59, 2458–2478, 2002.
- McFarquhar, G. M., Um, J., Freer, M., Baumgardner, D., Kok, G. L., and Mace, G.: Importance of small ice crystals to cirrus properties: Observations from the Tropical Warm Pool International Cloud Experiment (TWP-ICE), *Geophys. Res. Lett.*, 34, L13803, <https://doi.org/10.1029/2007GL029865>, 2007.
- Mioche, G., Jourdan, O., Delanoë, J., Gourbeyre, C., Febvre, G., Dupuy, R., Monier, M., Szczap, F., Schwarzenboeck, A., and Gayet, J.-F.: Vertical distribution of microphysical properties of Arctic springtime low-level mixed-phase clouds over the Greenland and Norwegian seas, *Atmos. Chem. Phys.*, 17, 12845–12869, <https://doi.org/10.5194/acp-17-12845-2017>, 2017.
- Möhler, O., Büttner, S., Linke, C., Schnaiter, M., Saathoff, H., Stetzer, O., Wagner, R., Krämer, M., Mangold, A., Ebert, V., and Schurath, U.: Effect of sulfuric acid coating on heterogeneous ice nucleation by soot aerosol particles, *J. Geophys. Res.*, 110, D11210, <https://doi.org/10.1029/2004JD005169>, 2005.
- Neshyba, S., Lowen, B., Benning, M., Lawson, A., and Rowe, P.: Roughness metrics of prismatic facets of ice, *J. Geophys. Res.-Atmos.*, 118, 3309–3318, 2013.
- Neubauer, D., Lohmann, U., Hoose, C., and Frontoso, M. G.: Impact of the representation of marine stratocumulus clouds on the anthropogenic aerosol effect, *Atmos. Chem. Phys.*, 14, 11997–12022, <https://doi.org/10.5194/acp-14-11997-2014>, 2014.
- Pincus, R. and Stevens, B.: Paths to accuracy for radiation parameterizations in atmospheric models, *J. Adv. Model. Earth Sy.*, 5, 225–233, 2013.
- Platnick, S., Meyer, K. G., King, M. D., Wind, G., Amarasinghe, N., Marchant, B., Arnold, G. T., Zhang, Z., Hubanks, P. A., Holz, R. E., Yang, P., Ridgway, W. L., and Riedi, J.: The MODIS cloud optical and microphysical products: Collection 6 updates and examples from Terra and Aqua, *IEEE T. Geosci. Remote*, 55, 502–525, 2017.
- Sassen, K., Wang, Z., and Liu, D.: Global distribution of cirrus clouds from CloudSat/Cloud-Aerosol lidar and infrared pathfinder satellite observations (CALIPSO) measurements, *J. Geophys. Res.*, 113, D00A12, <https://doi.org/10.1029/2008JD009972>, 2008.
- Schmitt, C. G., Heymsfield, A. J., Connolly, P., Järvinen, E., and Schnaiter, M.: A global view of atmospheric ice particle complexity, *Geophys. Res. Lett.*, 43, 11913–11920, <https://doi.org/10.1002/2016GL071267>, 2016a.
- Schmitt, C. G., Schnaiter, M., Heymsfield, A. J., Yang, P., Hirst, E., and Bansemer, A.: The microphysical properties of small ice particles measured by the Small Ice Detector-3 probe during the MACPEX field campaign, *J. Atmos. Sci.*, 73, 4775–4791, 2016b.
- Schnaiter, M., Büttner, S., Möhler, O., Skrotzki, J., Vragel, M., and Wagner, R.: Influence of particle size and shape on the backscattering linear depolarisation ratio of small ice crystals – cloud chamber measurements in the context of contrail and cirrus microphysics, *Atmos. Chem. Phys.*, 12, 10465–10484, <https://doi.org/10.5194/acp-12-10465-2012>, 2012.
- Schnaiter, M., Järvinen, E., Vochezer, P., Abdelmonem, A., Wagner, R., Jourdan, O., Mioche, G., Shcherbakov, V. N., Schmitt, C. G., Tricoli, U., Ulanowski, Z., and Heymsfield, A. J.: Cloud chamber experiments on the origin of ice crystal complexity in cirrus clouds, *Atmos. Chem. Phys.*, 16, 5091–5110, <https://doi.org/10.5194/acp-16-5091-2016>, 2016.
- Schnaiter, M., Järvinen, E., Abdelmonem, A., and Leisner, T.: PHIPS-HALO: the airborne particle habit imaging and polar scattering probe – Part 2: Characterization and first results, *Atmos. Meas. Tech.*, 11, 341–357, <https://doi.org/10.5194/amt-11-341-2018>, 2018.
- Schön, R., Schnaiter, M., Ulanowski, Z., Schmitt, C., Benz, S., Möhler, O., Vogt, S., Wagner, R., and Schurath, U.: Particle habit imaging using incoherent light: a first step toward a novel instrument for cloud microphysics, *J. Atmos. Ocean. Tech.*, 28, 493–512, 2011.
- Shcherbakov, V., Gayet, J.-F., Jourdan, O., Minikin, A., Ström, J., and Petzold, A.: Assessment of cirrus cloud optical and microphysical data reliability by applying statistical procedures, *J. Atmos. Ocean. Tech.*, 22, 409–420, 2005.
- Sun, W., Loeb, N. G., Videen, G., and Fu, Q.: Examination of surface roughness on light scattering by long ice columns by use of a two-dimensional finite-difference time-domain algorithm, *Appl. Optics*, 43, 1957–1964, 2004.
- Tang, G., Panetta, R. L., Yang, P., Kattawar, G. W., and Zhai, P.-W.: Effects of ice crystal surface roughness and air bubble inclusions on cirrus cloud radiative properties from remote sensing perspective, *J. Quant. Spectrosc. Ra.*, 195, 119–131, 2017.
- Ulanowski, Z., Hesse, E., Kaye, P. H., and Baran, A. J.: Light scattering by complex ice-analogue crystals, *J. Quant. Spectrosc. Ra.*, 100, 382–392, <https://doi.org/10.1016/j.jqsrt.2005.11.052>, 2006.
- Ulanowski, Z., Kaye, P. H., Hirst, E., and Greenaway, R.: Light scattering by ice particles in the Earth's atmosphere and related laboratory measurements, in: *Procs 12th Int Conf on Electromagnetic and Light Scattering*, University of Helsinki, Helsinki, Finland, 28 June–2 July 2010.
- Ulanowski, Z., Kaye, P. H., Hirst, E., Greenaway, R. S., Cotton, R. J., Hesse, E., and Collier, C. T.: Incidence of rough and irregular atmospheric ice particles from Small Ice Detector 3 measurements, *Atmos. Chem. Phys.*, 14, 1649–1662, <https://doi.org/10.5194/acp-14-1649-2014>, 2014.
- Um, J. and McFarquhar, G. M.: Single-scattering properties of aggregates of bullet rosettes in cirrus, *J. Appl. Meteorol. Clim.*, 46, 757–775, 2007.

- Um, J. and McFarquhar, G. M.: Single-scattering properties of aggregates of plates, *Q. J. Roy. Meteor. Soc.*, 135, 291–304, 2009.
- van Diedenhoven, B., Cairns, B., Geogdzhayev, I. V., Fridlind, A. M., Ackerman, A. S., Yang, P., and Baum, B. A.: Remote sensing of ice crystal asymmetry parameter using multi-directional polarization measurements – Part 1: Methodology and evaluation with simulated measurements, *Atmos. Meas. Tech.*, 5, 2361–2374, <https://doi.org/10.5194/amt-5-2361-2012>, 2012.
- Voigt, C., Schumann, U., Minikin, A., Abdelmonem, A., Afchine, A., Borrmann, S., Boettcher, M., Buchholz, B., Bugliaro, L., Costa, A., Curtius, J., Dollner, M., Dörnbrack, A., Dreiling, V., Ebert, V., Ehrlich, A., Fix, A., Forster, L., Frank, F., Fütterer, D., Giez, A., Graf, K., Groß, J.-U., Groß, S., Heinold, B., Hüneke, T., Järvinen, E., Jurkat, T., Kaufmann, S., Kenntner, M., Klingebiel, M., Klimach, T., Kohl, R., Krämer, M., Krisna, T. C., Luebke, A., Mayer, B., Mertes, S., Molleker, S., Petzold, A., Pfeilsticker, K., Port, M., Rapp, M., Reutter, P., Rolf, C., Rose, D., Sauer, D., Schäfler, A., Schlage, R., Schnaiter, M., Schneider, J., Spelten, N., Spichtinger, P., Stock, P., Weigel, R., Weinzierl, B., Wendisch, M., Werner, F., Wernli, H., Wirth, M., Zahn, A., Ziereis, H., and Zöger, M.: ML-CIRRUS – The airborne experiment on natural cirrus and contrail cirrus with the high-altitude long-range research aircraft HALO, *B. Am. Meteorol. Soc.*, 98, 271–288, 2017.
- Voigtländer, J., Chou, C., Bieligk, H., Clauss, T., Hartmann, S., Herenz, P., Niedermeier, D., Ritter, G., Stratmann, F., and Ulanowski, Z.: Surface roughness during depositional growth and sublimation of ice crystals, *Atmos. Chem. Phys.*, 18, 13687–13702, <https://doi.org/10.5194/acp-18-13687-2018>, 2018.
- Wagner, R., Möhler, O., Saathoff, H., Schnaiter, M., and Leisner, T.: New cloud chamber experiments on the heterogeneous ice nucleation ability of oxalic acid in the immersion mode, *Atmos. Chem. Phys.*, 11, 2083–2110, <https://doi.org/10.5194/acp-11-2083-2011>, 2011.
- Wendisch, M., Pöschl, U., Andreae, M. O., et al.: The ACRIDICON-CHUVA campaign: Studying tropical deep convective clouds and precipitation over Amazonia using the new German research aircraft HALO, *B. Am. Meteorol. Soc.*, 97, 1885–1908, 2016.
- Wendisch, M., Macke, A., Ehrlich, A., et al.: The Arctic Cloud Puzzle: Using ACLOUD/PASCAL Multi-Platform Observations to Unravel the Role of Clouds and Aerosol Particles in Arctic Amplification, *B. Am. Meteorol. Soc.*, submitted, 2018.
- Yang, P. and Liou, K.: Single-scattering properties of complex ice crystals in terrestrial atmosphere, *Beitrage zur Physik der Atmosphäre-Contributions to Atmospheric Physics*, 71, 223–248, 1998.
- Yang, P., Kattawar, G. W., Hong, G., Minnis, P., and Hu, Y.: Uncertainties associated with the surface texture of ice particles in satellite-based retrieval of cirrus clouds – Part I: Single-scattering properties of ice crystals with surface roughness, *IEEE T. Geosci. Remote*, 46, 1940–1947, 2008.
- Yang, P., Bi, L., Baum, B. A., Liou, K.-N., Kattawar, G. W., Mishchenko, M. I., and Cole, B.: Spectrally consistent scattering, absorption, and polarization properties of atmospheric ice crystals at wavelengths from 0.2 to 100 μm , *J. Atmos. Sci.*, 70, 330–347, 2013.
- Yi, B., Yang, P., Baum, B. A., L'Ecuyer, T., Oreopoulos, L., Mlawer, E. J., Heymsfield, A. J., and Liou, K.: Influence of Ice Particle Surface Roughening on the Global Cloud Radiative Effect, *J. Atmos. Sci.*, 70, 2794–2807, <https://doi.org/10.1175/JAS-D-13-020.1>, 2013.
- Yi, B., Yang, P., Liu, Q., Delst, P., Boukabara, S.-A., and Weng, F.: Improvements on the ice cloud modeling capabilities of the Community Radiative Transfer Model, *J. Geophys. Res.-Atmos.*, 121, 13577–13590, 2016.
- Zhou, C.: Coherent backscatter enhancement in single scattering, *Opt. Express*, 26, A508–A519, 2018.