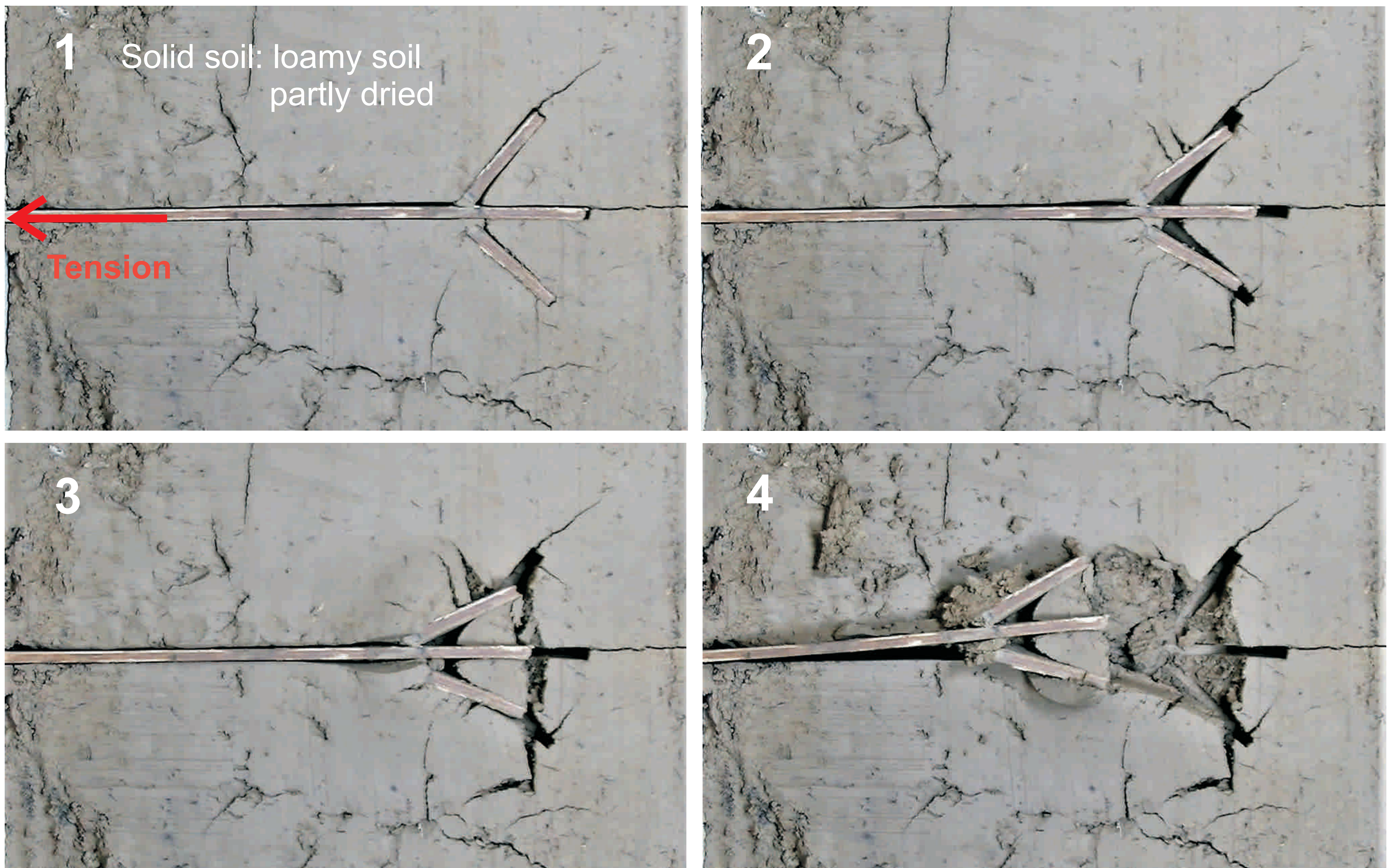
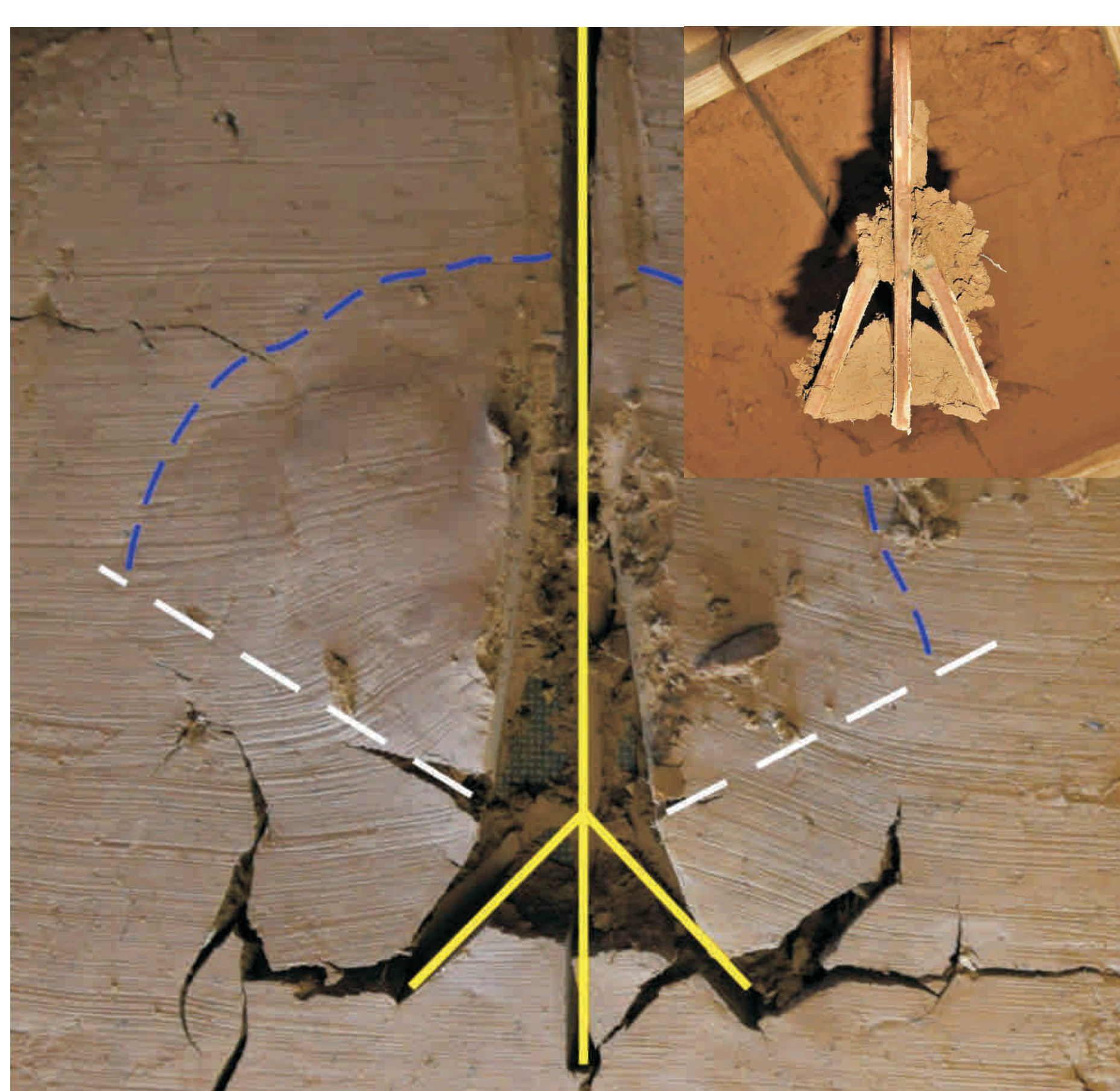


Soil knot- and compression cone formation in pull out test on root anchor model

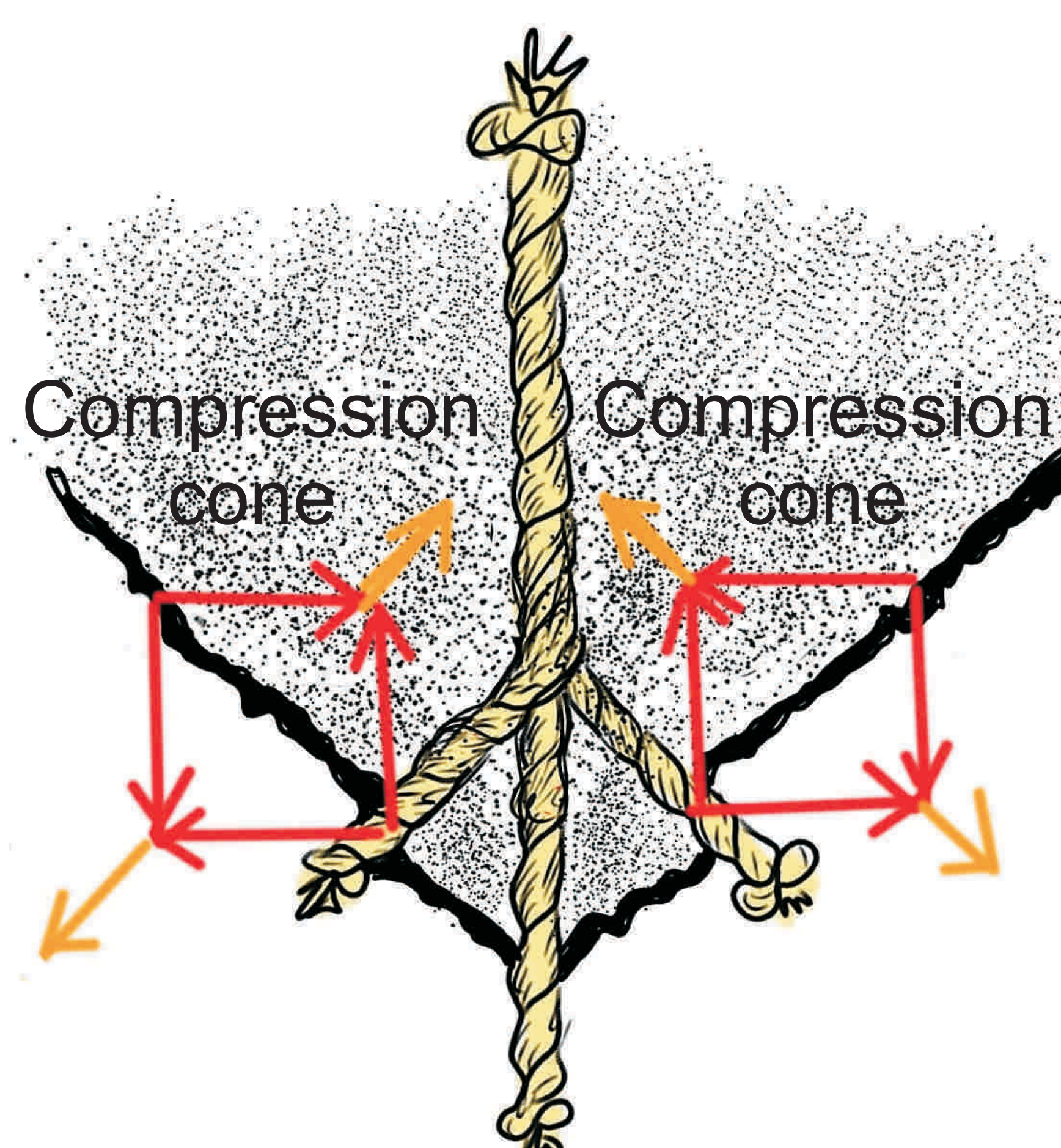
C. Mattheck, K. Bethge, K. Weber, I. Tesari



Pull out test: Root anchor model with lateral roots positioned in loamy soil (partly dried). Pulling the anchor model out (by tension to the left) a soil knot is formed pushing in front of it a compression cone.



A soil knot produced by the root anchor model after being pulled out (small picture) and a visibly compressed soil area inside the compression cone.



Schematic representation of the soil knot- and compression cone formation at the root branch when being pulled out.

