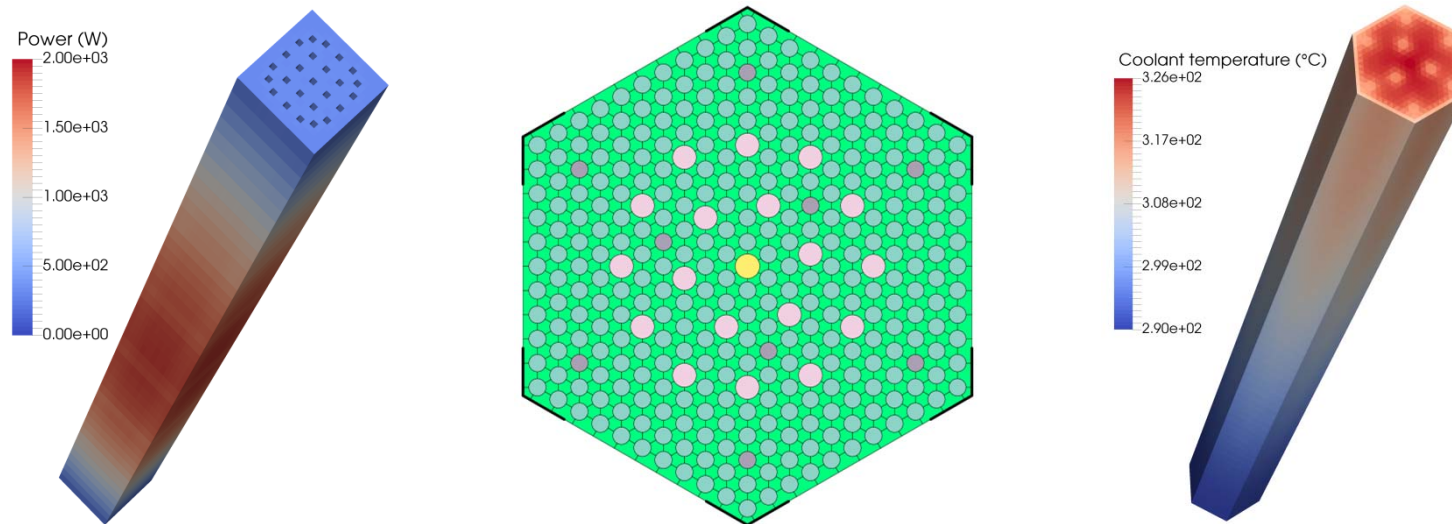


Advanced modelling capabilities for pin-level subchannel analysis of PWR and VVER reactors

M. García, U. Imke, D. Ferraro, V. Sanchez-Espinoza, L. Mercatali

Karlsruhe Institute of Technology (KIT) - Institute for Neutron Physics and Reactor Technology (INR)

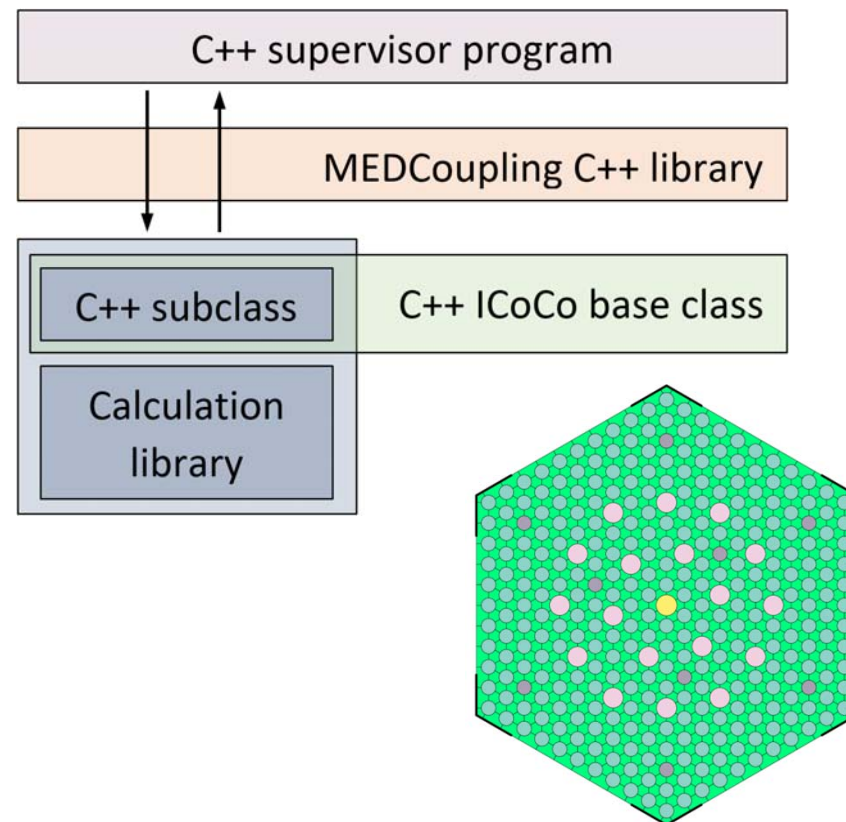


Introduction: the McSAFE EU project

- Objectives:
 - High-fidelity computational reactor physics:
 - Improvement of the prediction of local safety parameters.
 - Calculation of reference solution for low-order methods.
 - Development of multiphysics tools based on Monte Carlo particle transport, subchannel thermalhydraulics and fuel-performance analysis.
 - Solution of steady-state, depletion and transient problems.
 - Optimization for massive problems, e. g. full-core pin-by-pin burnup.
 - Validation with PWR (Konvoi) and VVER-1000 plant data.
- Participants:
 - KIT (SUBCHANFLOW).
 - VTT (Serpent2).
 - JRC, HZDR (TRANSURANUS).
 - CEA (Tripoli), DNC (MCNP), AMEC (MONK), NRI, KTH.
 - EKK, CEZ, EdF.
- Continuation of the NURESAFE and HPMC projects.

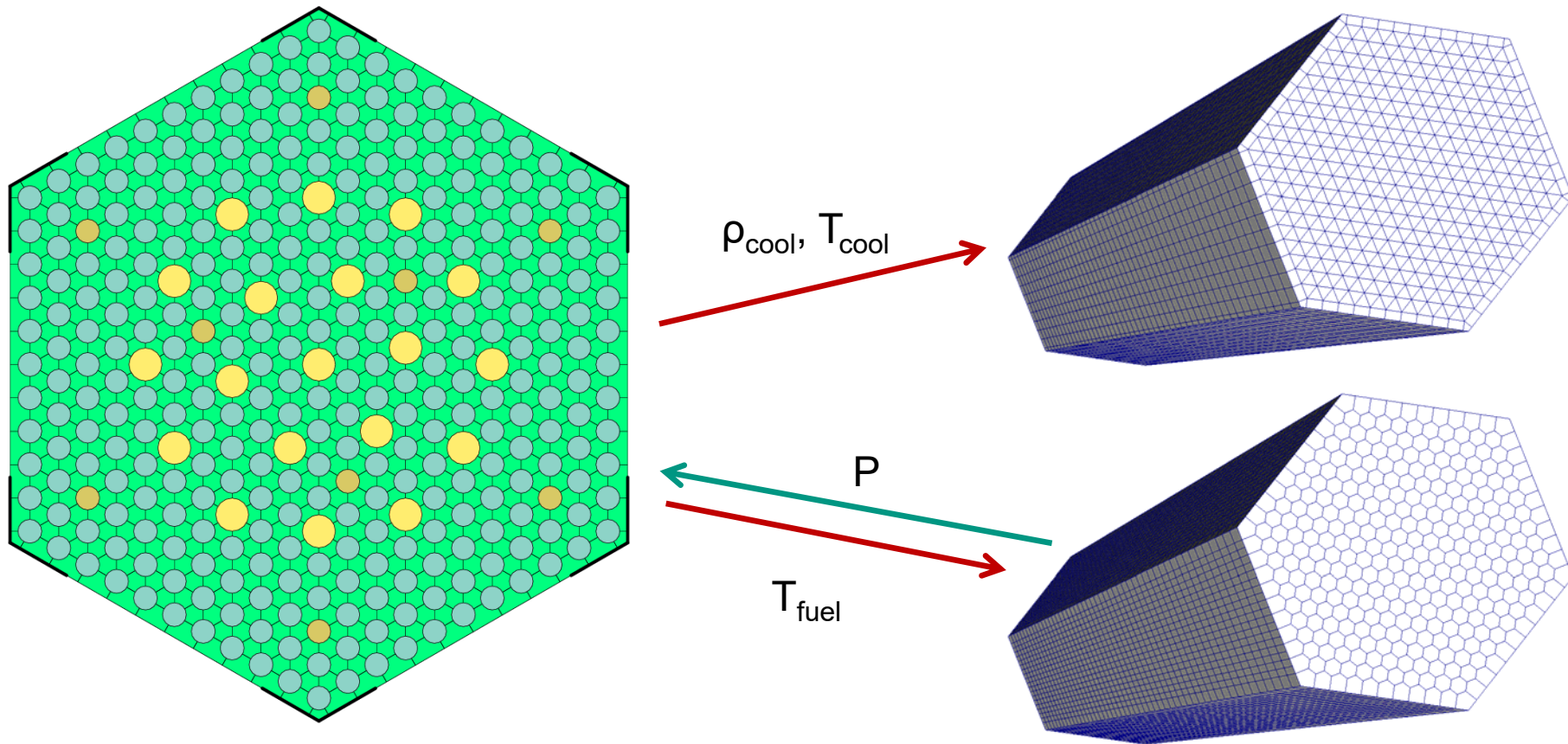
SUBCHANFLOW

- COBRA- (MATRA-)based subchannel code developed at KIT:
 - Flow solver: 3+1 system of equations (mass, energy and momentum in the axial direction, plus a simplified lateral-momentum model for cross-flow).
 - Two-phase flow models (slip, saturated and subcooled void generation, etc).
 - Grid spacers and wire wraps.
 - Turbulent mixing.
- Multiphysics approach:
 - Calculation library.
 - C++ interface class.
 - Mesh-based feedback.
 - Object-oriented coupling.
- New preprocessor:
 - Subchannel model.
 - Structural components.
 - Unstructured mesh generation.



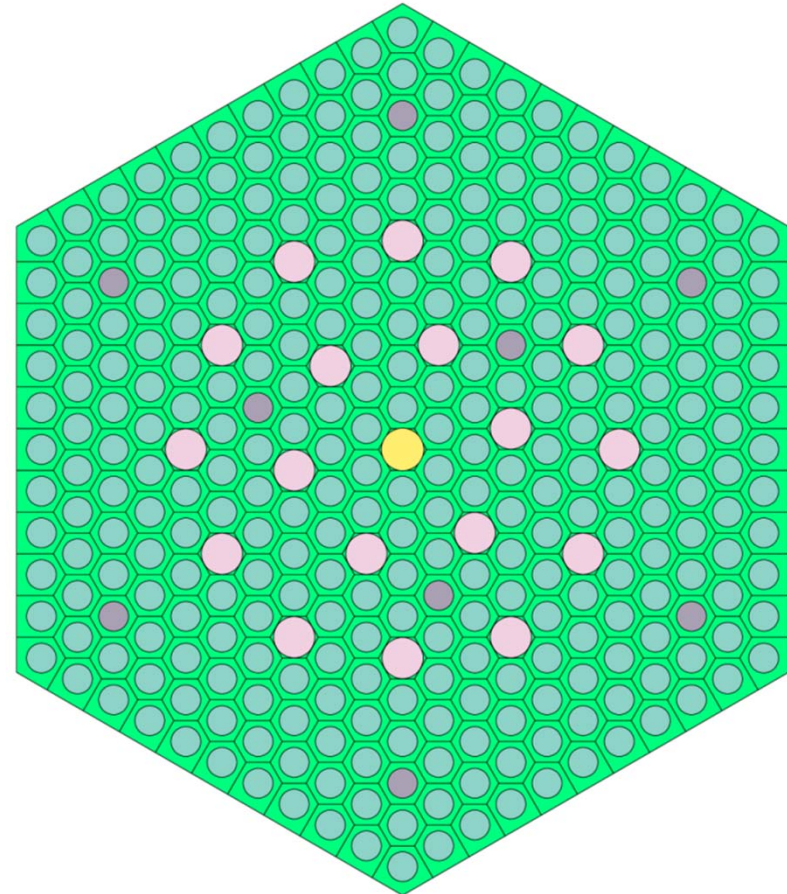
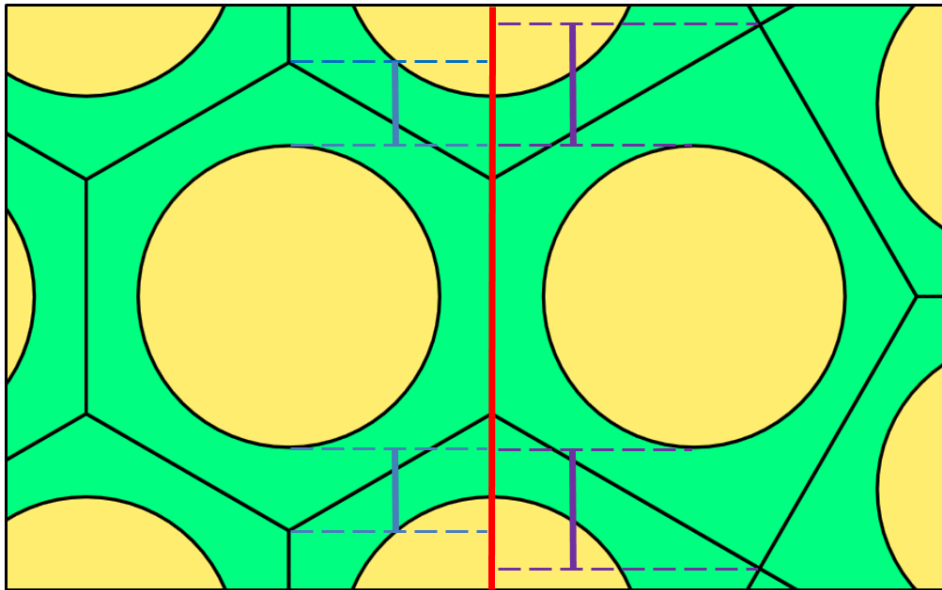
Mesh-based feedback exchange

- Subchannel model defined by hydraulic parameters and connectivity.
- Coolant and fuel (MEDCoupling) unstructured meshes define the channel and rod geometry for feedback exchange and interpolation.



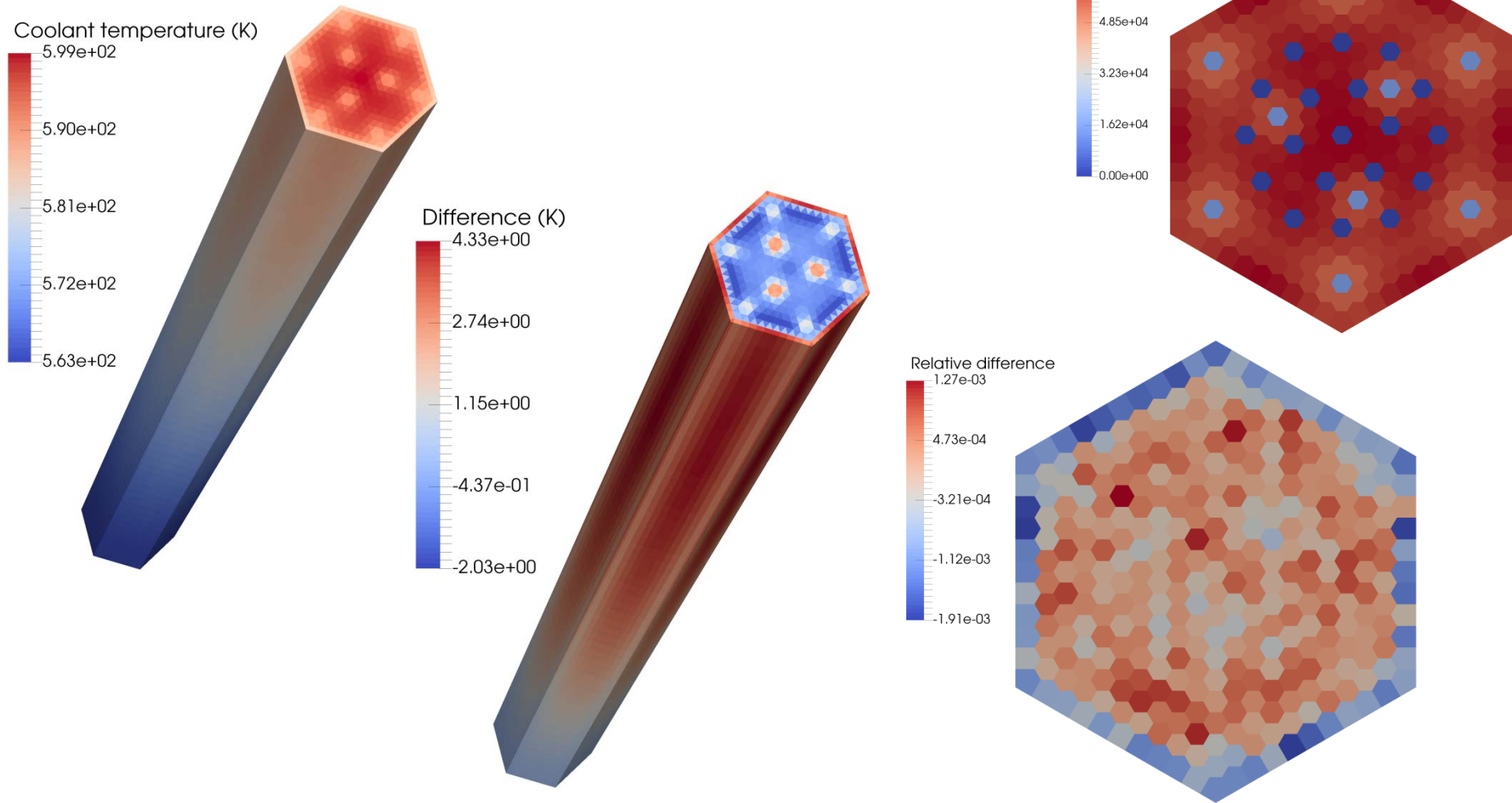
Subchannel models

- Coolant-centered subchannels:
 - Widely used and physically sound.
 - Complex interpolation needed.
- Fuel-centered subchannels:
 - Parameters harder to define.
 - More convenient for multiphysics.



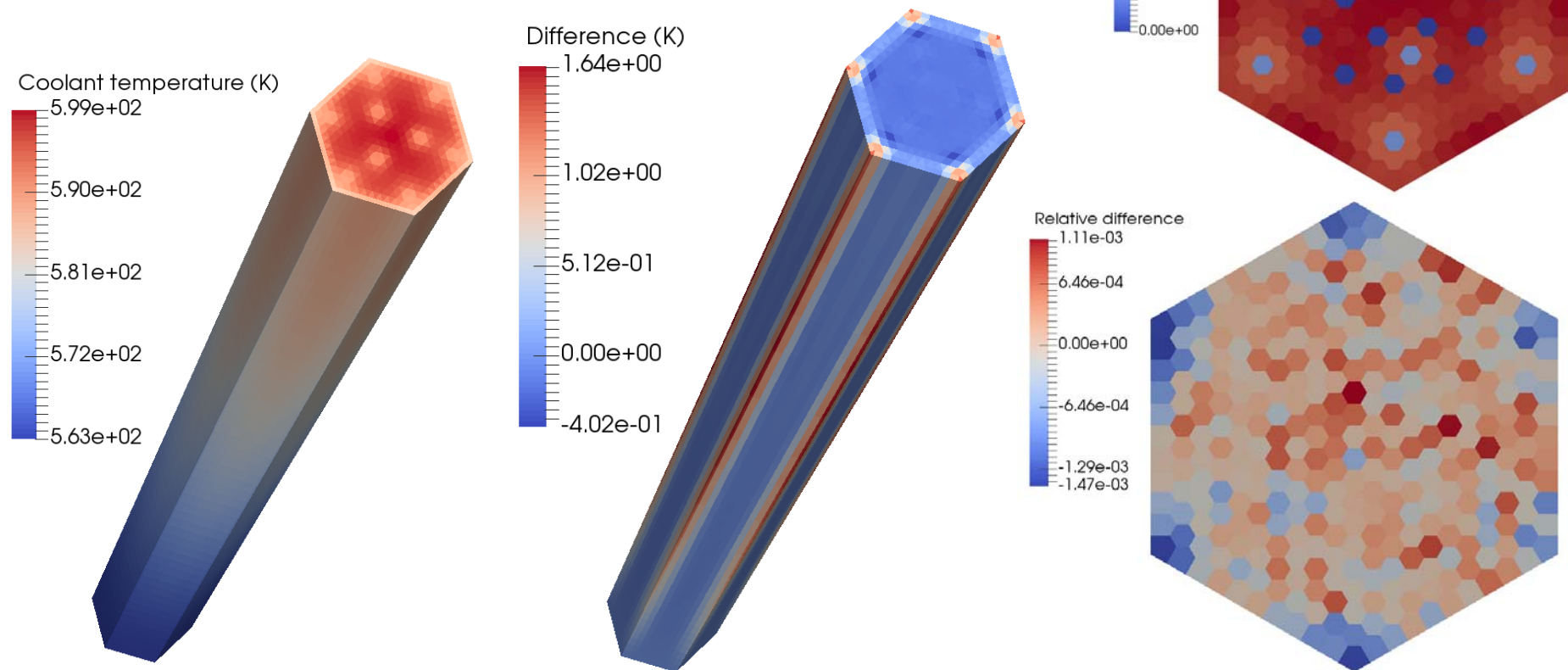
Fuel-centered subchannel models

30AV5 VVER-1000 fuel-assembly type:



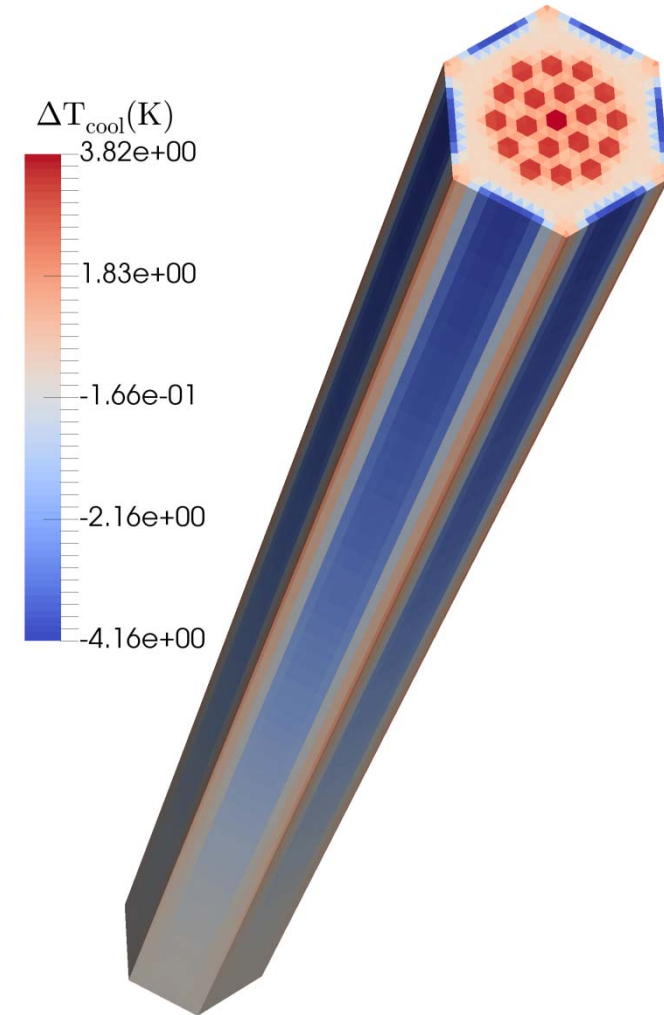
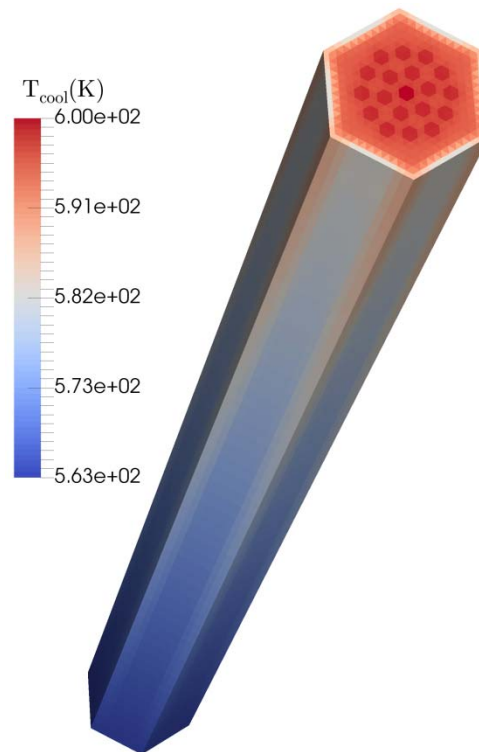
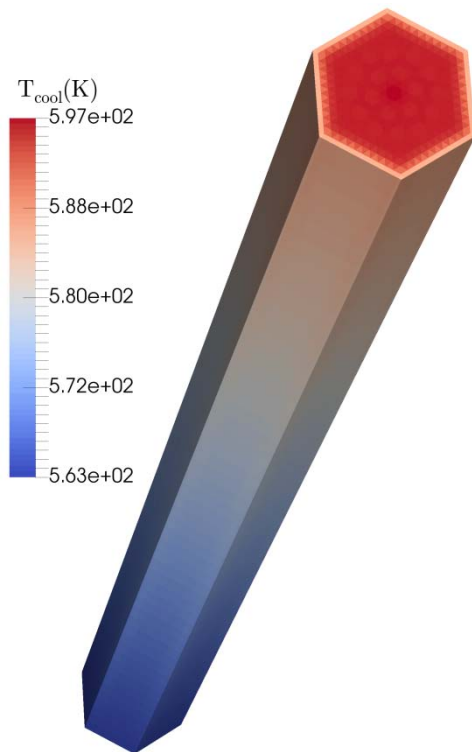
VVER-1000 stiffeners [1]

- Subchannel model:
 - Increased wetted perimeter.
 - Modified subchannel connections.
- 30AV5 VVER-1000 fuel-assembly type:



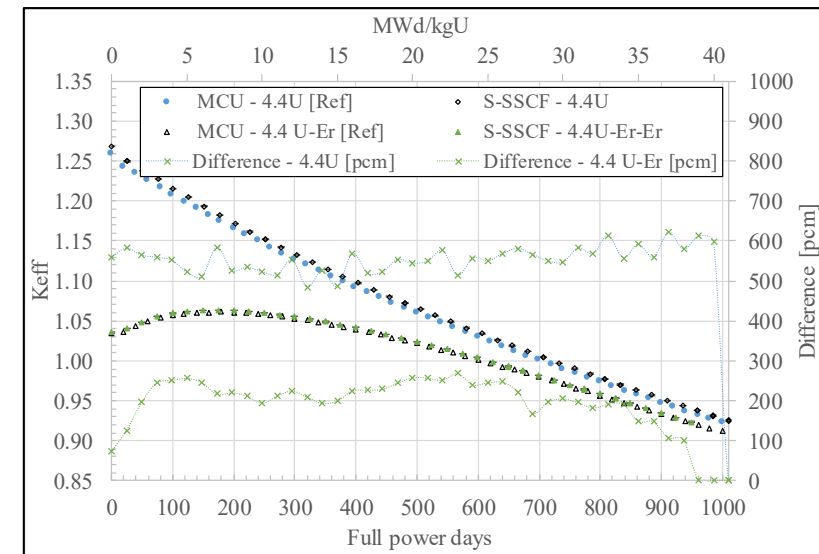
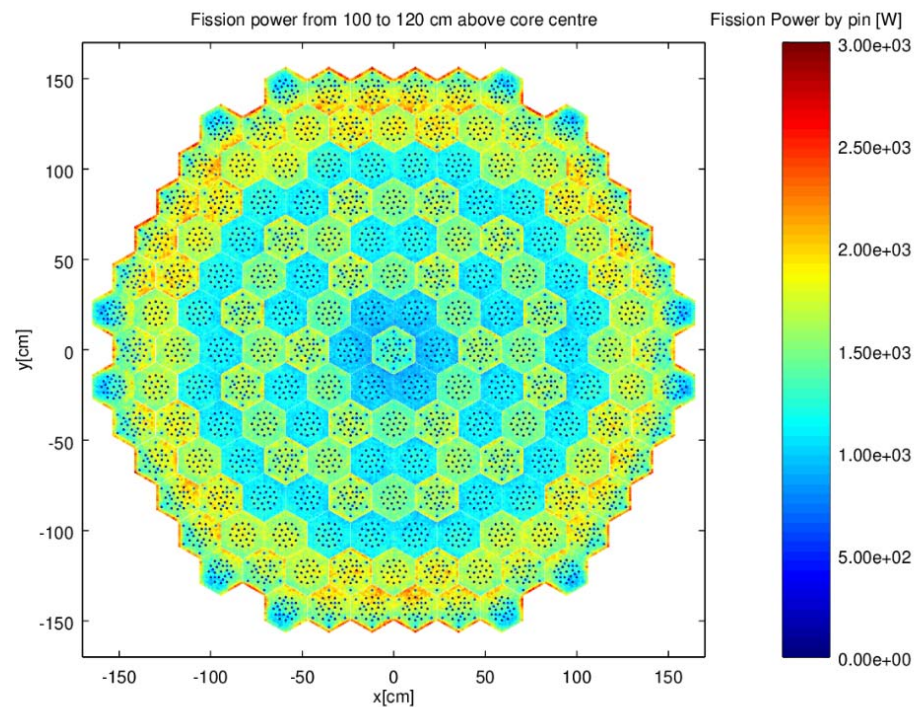
Cross-flow model

- Two phenomena:
 - Turbulent mixing.
 - Convective lateral flow.
- Pure-turbulent mixing much faster and stable.



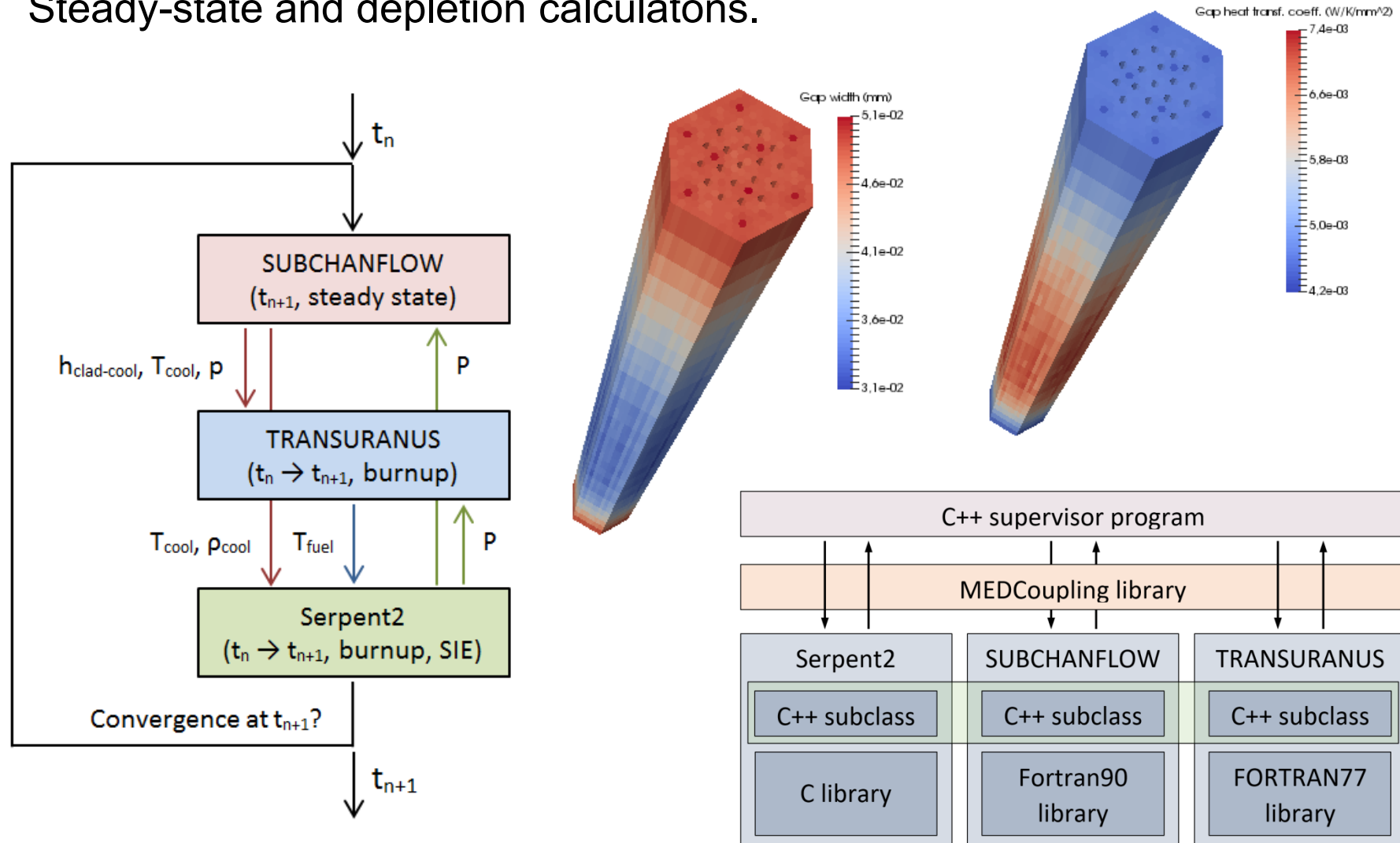
Applications: Serpent2-SCF [1]

- Current capabilities:
 - Steady state: full-core, pin-by-pin, fuel-assembly-level Xe.
 - Depletion: single fuel assemblies (memory bottleneck).
 - Transients: mini-core, pin-by-pin.
- Objective: full-core pin-level depletion.



Applications: Serpent2-SCF-TU [1]

- Steady-state and depletion calculations.



Conclusions

- SUBCHANFLOW multiphysics capabilities:
 - Object-oriented modularization.
 - Mesh-based feedback exchange.
 - New preprocessor for the generation of models.
- Analysis of subchannel models:
 - Coolant- and fuel-centered subchannels.
 - Explicit modelling of structural components.
 - Turbulent and convective cross-flow.
- Multiphysics applications:
 - Serpent2-SUBCHANFLOW for steady-state, depletion and transients.
 - Serpent2-SUBCHANFLOW-TRANSURANUS for burnup calculations.
- Further work:
 - Hot-channel methodology for full-core cases.
 - Optimization of coupled systems.
 - Validation with plant data for depletion calculations.



THANK YOU

GRACIAS
ARIGATO
SHUKURIA
JUSPAXAR
DANKSCHEEN
BIYAN SHUKRIA
TASHAKKUR ATU
SUKSAMA
MEHRBANI
MERCI
BOLZIN
GRAZIE
MERCIE
TASHAKKUR ATU
YAQHANYELAY
TINGKI
HATUR MATI
UNALCHEESH
HAI
YUSPAGARATAM
WADEEJA MAITEKA
DHIARYAABAD
ANHA
ATTO
MERSI
DENKAU-JA
HENACHALHYA
MERASTAWHY
GAEJTHO
SAIKO
KOMAPSUNIDA
MAAKE
LAH
BAIKA
TAVTAPUCH
MEDAWAGSE
GOZAIMASHITA
EFCHARISTO
AGUYJE
FAKAAUE
MAKETAI
MINMONCHAR
ENKOU
SIKOMO