



The potential natural vegetation of large river floodplains – From dynamic to static equilibrium

Konstantin Ochs^{a,*}, Gregory Egger^b, Arnd Weber^c, Teresa Ferreira^a, John Ethan Householder^b, Matthias Schneider^d

^a Forest Research Centre, Instituto Superior de Agronomia, University of Lisbon, Lisbon, Portugal

^b Department of Wetland Ecology, Karlsruhe Institute of Technology, Karlsruhe, Germany

^c Department of Vegetation Studies & Landscape Management, Federal Institute of Hydrology, Koblenz, Germany

^d sje – Ecohydraulic Engineering GmbH, Stuttgart, Germany

ARTICLE INFO

Keywords:

Potential natural vegetation

PNV

Riparian vegetation

Floodplain

Modelling

Large rivers

ABSTRACT

The potential natural vegetation (PNV) is a useful benchmark for the restoration of large river floodplains because very few natural reference reaches exist. Expert-based approaches and different types of ecological models (static and dynamic) are commonly used for its estimation despite the conceptual differences they imply. For natural floodplains a static concept of PNV is not reasonable, as natural disturbances cause a constant resetting of succession. However, various forms of river regulation have disrupted the natural dynamics of most large European rivers for centuries. Therefore, we asked whether the consideration of succession dynamics and time dependent habitat turnover are still relevant factors for the reconstruction of the PNV.

To answer this we compared the results of a simulation of the vegetation succession (1872–2016) of a segment of the upper Rhine river after regulation (damming, straightening and bank protection) to different statistic and expert-based modelling approaches for PNV reconstruction. The validation of the different PNV estimation methods against a set of independent reference plots and the direct comparison of their results revealed very similar performances. We therefore conclude that due to a lack of large disturbances, the vegetation of regulated large rivers has reached a near-equilibrium state with the altered hydrologic regime and that a static perception of its PNV may be justified. Consequently, statistical models seem to be the best option for its reconstruction since they need relatively few resources (data, time, expert knowledge) and are reproducible.

1. Introduction

River floodplains are amongst the most species-rich and productive ecosystems (Naiman and Decamps, 1997). At the same time, these ecosystems are one of the most threatened and modified worldwide (Tockner and Stanford, 2002), highlighting the need for conservation and restoration efforts (Buijse et al., 2002; Myers et al., 2000). Such efforts, however, are challenged by a lack of natural reference sites for orientation (Whited et al., 2007). Indeed, 90% of river floodplains in Europe and North America are used for agriculture or forestry and no longer harbor natural vegetation communities (Tockner and Stanford, 2002). Where no natural references exist, a potential natural vegetation (PNV) is often reconstructed and used as benchmark (Carranza et al., 2003; Hickler et al., 2012; Justice et al., 2017; Klimas et al., 2009; Schlepner and Schneider, 2013; Shi et al., 2016).

But the concept of PNV and the methods for its reconstruction are

highly controversial (Chiarucci et al., 2010; Loidi and Fernández-González, 2012; Mucina, 2010; Somodi et al., 2012). PNV was first defined by Tuxen (1956) as the vegetation that would develop under present site conditions if human influences were excluded completely, and succession would reach its climax stage at once. It has often been thought of as an historic, pre-human reference condition (Hall and McGlone, 2006; Willis and Birks, 2006). However this idea has provoked disagreement (Carrión and Fernández, 2009; Mitchell, 2005) because it ignores that environmental conditions have changed since pre-human times (Dotterweich, 2008; Nilsson et al., 2005). Therefore, it has been argued that an estimation of the natural vegetation based on the assessment of present-day natural vegetation remnants is more reliable (Kowarik, 1987). But in areas with historically high levels of land use transformation this assessment is also prone to uncertainties (Zerbe, 1998). Another much discussed issue is the consideration of ecosystem dynamics and stochasticity (Chiarucci et al., 2010; Härdtle, 1995),

* Corresponding author.

E-mail address: konstantin.ochs@gmail.com (K. Ochs).

<https://doi.org/10.1016/j.jher.2020.01.005>

which are especially relevant in naturally disturbed areas (Jackson, 2013; Leuschner, 1997; Zerbe, 1998). The traditional PNV estimation method is expert-based and follows a floristic-sociological approach (Westhoff and Van Der Maarel, 1978). It relies on the fieldworker's assessment and understanding of ecology to extrapolate present-day natural vegetation remnants to similar environments (Kowarik, 1987; Moravec, 1998). This approach, however, lacks transparency and reproducibility. Furthermore, its implied static perception of PNV makes predictions in dynamic systems questionable (Mucina, 2010). More comprehensive and also widely used for PNV estimations are ecological models based on the relationship between vegetation and environmental variables (Somodi et al., 2012; Zerbe, 1998). Two types can be differentiated that imply fundamental conceptual differences: static models and dynamic models (Hannon and Ruth, 1998). Static models describe a phenomenon at a given point in time and assume equilibrium between the vegetation and its environment. Dynamic models (e.g. process-based models or mechanistic models) are based on ecological processes and differ from static models by explicitly incorporating time-dependent changes in the system state. Therefore they are able to capture the transient response of vegetation to a changing environment (Hannon and Ruth, 2014).

Little attention, however, has been given to issues surrounding PNV in fluvial contexts. The first modelling approaches of PNV in floodplains were static and tried to explain the vegetation patterns along vertical (height above channel) and lateral (distance away from channel) gradients (Bowman and McDonough, 1991; Ellenberg, 1996; Glavac et al., 1992; Hosner and Minckler, 1963; Hughes, 1988; Nixon et al., 1977; Roberts and Ludwig, 2016; Robertson et al., 1978; Ward and Stanford, 1995). Later more advanced static models emerged that relate the vegetation distribution to a set of hydrologic variables based on expert rules (Aggenbach and Pelsma, 2003; Baptist et al., 2004; Fuchs et al., 2012; Jungwirth et al., 2002; Lenders et al., 2001; Pieterse et al., 1998; Runhaar, 2003) or statistical analyses (Auble et al., 1994; Franz and Bazzaz, 1977; Menuz, 2011). Dynamic floodplain vegetation models combine a simulation of the hydro-dynamics with the modelling of ecological processes (e.g. growth and mortality, recruitment, succession/retrogression, competition) and are used to describe the vegetation development over time (Benjankar et al., 2011; Camporeale and Ridolfi, 2006; Garcia-Arias and Francés, 2016; Pearlstine et al., 1985). More recently, the dynamic feedbacks between vegetation and hydro-geomorphological processes have also been incorporated (Camporeale et al., 2013; van Oorschot et al., 2016). We argue that for floodplains of unregulated rivers the original static concept of PNV based on a climax stage of vegetation is not reasonable because successional sequences are repeatedly rejuvenated and reset by hydro-geomorphological disturbances (Pringle et al., 1988). It has been theorized that at the appropriate scale the proportion of successional phases would remain constant when processes of regression are compensated by progression, a dynamic equilibrium referred to as shifting steady-state mosaic (Bormann and Likens, 1979; Geerling et al., 2006; Stanford et al., 2005). While methodological advances reflect the growing recognition in the importance of allowing dynamic change in PNV estimation, various forms of river regulation have disrupted the natural dynamics in most large rivers (Buijse et al., 2002; Dynesius and Nilsson, 1994). River damming and bank stabilization are the main reason for the impediment of dynamic geomorphological processes (e.g. avulsion, meandering, braiding) and decrease of hydrodynamic variability and disturbance in the riparian zone (Church, 1995; Magilligan and Nislow, 2005; Nilsson and Berggren, 2000; Petts and Gurnell, 2005).

In this context, we investigated whether the consideration of succession dynamics and habitat turnover are still relevant factors for the model-based reconstruction of the PNV of regulated large river floodplains. Our hypothesis is that they can be neglected because riparian vegetation of regulated large rivers has reached a stable equilibrium due to the loss of natural disturbance dynamics. To test this idea we compared the results of a simulation of the succession dynamics

(1872–2016) of the floodplain vegetation of a segment of the heavily regulated upper Rhine River to different static approaches for the estimation of its PNV a) a statistical model based on hydrologic predictors and the geomorphological age of site b) a statistical model only based on hydrologic predictors and c) a gradient approach only based on the distance to the mean water level.

2. Methodology

2.1. Study area

The Rhine River is one of the largest rivers in Central Europe, with a length of approximately 1230 km and a catchment area of approximately 185300 km². Our study area lies in the Upper Rhine region where the nival discharge regime is strongly influenced by snow-melt in the Alps (Belz and Frauenfelber-Kääb, 2007). Until the beginning of the 19th century the Upper Rhine could still be considered in natural condition (Gallusser and Schenker, 1992) and was classified as an highly dynamic, island-dominated, anabranching river system (Gurnell and Petts, 2002; Herget et al., 2005). During the course of the 19th century, however, the Upper Rhine River was transformed into a single-thread channel by cutting off meander bends and building groins and bank revetments (Bernhardt, 2000). In the 20th century river regulation intensified through the construction of 10 hydropower plants in the main channel or in artificial side channels (Dister et al., 1990). During this time industry and settlements also expanded in the study area (Habersack and Piégay, 2007). The study area is the “Raststatter Rheinaue”, a nature reserve on the eastern, German side of the floodplain that includes a 9-km segment of the Upper Rhine River downstream from the Iffezheim dam to the confluence of the river Murg (Rhine km 335.8–345, 114–110 m a.s.l.). It is only limited by flood dykes towards the east and is still regularly flooded. The study area covers approximately 645 ha (including water bodies).

2.2. Material and data

2.2.1. Historic maps

Because the Upper Rhine has been the border between France and Germany, detailed maps were produced for the planning of the river straightening in the beginning of the 19th century. These indicate the location of water bodies, islands and gravel/sand bars within the aquatic area, as well as land uses in the floodplain (grasslands, forests, croplands and settlements). Our work is based primarily on four historical maps from that time (1816, 1838, 1852, 1872) that were georeferenced and classified in natural (natural water body, gravel/sand bar, grassland and forest) or anthropic (artificial water body, cropland, settlement and industry) habitat categories (for details see Table C1 and Diaz-Redondo et al., 2017).

2.2.2. Discharge data and hydrodynamic model

The analysis of the flow regime of the study area for the whole simulation period is based on the Maxau gauging station (Rhine km 362.3) which has the longest continuous record of daily discharge (1921 – today) and also records of the annual low, mean and high discharges for the period 1872–1921 (Diaz-Redondo et al., 2017). A two-dimensional hydrodynamic model (SRH-2D; Lai, 2008) of the Rhine river and its eastern floodplain was set up. The model bathymetry is based on a high-resolution (1 m) DEM (Wasserstrassen- und Schifffahrtsverwaltung des Bundes (WSV), 2016) supplemented by longitudinal profiles and cross sections through the main waterbodies in the study area (Díaz-Redondo et al., 2018). The model mesh consists of 149,900 nodes with an average distance of 20 m in the main channel, 10 m in the floodplain and down to 2 m in the river bank and dam zones. Break lines were integrated manually. Water surface elevations (WSE) for 6 flood events with return periods between 1 and 100 years provided by the German Federal Agency for Hydrology (BfG) were used

for model calibration and setting of the lower boundary condition. Manning roughness coefficients were first appointed to the model elements based on different land use and lie around 0.083 for the floodplain forest and around 0.026 for the side channels and 0.037 for the main river channel. Calibration was performed by adjusting Manning's roughness coefficients to minimize the difference between modelled and measured WSEs. Mean WSE errors were between 1 cm for flood events with short return periods and 20 cm for higher return periods.

2.2.3. Calibration and validation data

We used an expert-based PNV map (Ochs et al., 2019) and analyzed the historical land-use to delineate likely reference areas for four main vegetation types: Reeds, softwood forest, transition forest and hardwood. Within these areas a total of 130 random sampling plots (radius = 5 m) were distributed with a minimum distance between them of 50 m. The PNV-type of the plots was verified during several field visits (Föll and Egger, 2017). The verification was guided by indicator species from the herb and shrub layers (see Table A1). Reeds could be confirmed in 8 plots, softwood forest in 36 plots, transition forest in 40 plots and 37 plots could be clearly identified as hardwood forest. To increase the independency of the assessment of the predictive performance and comparison between the different modelling approaches we split the study area geographically perpendicular to the river axis (Wenger and Olden, 2012). The downstream part that represents between 30% and 40% of the reference plots of each vegetation type was used for validation (Fig. 1).

2.3. Dynamic succession model (DM)

The dynamic floodplain vegetation model CASIMIR (Benjankar et al., 2011; Egger et al., 2013) was used to predict the PNV by simulating the succession of the floodplain vegetation from 1872 to 2016. The time period was chosen because by 1872 the study area had already

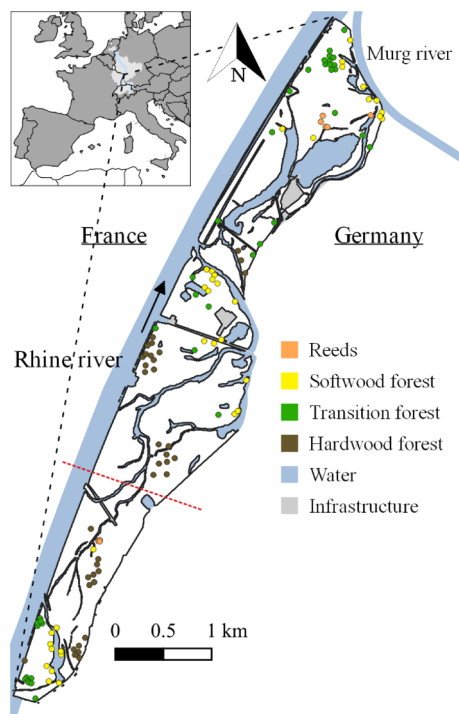


Fig. 1. Upper left corner: Location of study area in central Europe (dark grey) and the Rhine basin (light grey); Rest: Location of the study area along the eastern (Germany) side of the Rhine river and reference PNV plots, the dashed red line indicate the separation in calibration (downstream) and validation data (upstream). (For interpretation of the references to colour in this figure legend, the reader is referred to the web version of this article.)

suffered the main hydro-morphological impacts through river straightening and channelization (Bernhardt, 2000). In the model, the riparian vegetation is represented in succession lines and their respective succession phases (Table C2). The dynamic modules are: Recruitment, controlled by the spring mean water level as described by the recruitment box model (Mahoney and Rood, 1998) and Succession (Progression/Retrogression), controlled by the disturbance indicators “flood duration” and “shear stress” (Formann et al., 2014). Each year the recruitment module checks for bare soils in the bank and floodplain zone as well as the water levels that allow seedling survival (Table C3) and the disturbance module checks whether the critical values of the disturbance indicators are surpassed (Table C4 and Table C5). The result of one simulated year will be used as input for the next year. The parametrization of the model was based on analyses of historic maps and historic discharge data. The model was calibrated against an expert-based PNV estimation of the upstream part of the study area so that the reference plots for validation can also be considered independent (for a detailed description of the model functioning and calibration/validation see Ochs et al., 2019 as well as Appendix B and C).

For comparability the succession phases of the final year were aggregated to match the main PNV types in the study area (Table C2).

2.4. Statistic models (SM1 and SM2)

The statistic modelling approach for the classification of the main PNV types was based on the random forest algorithm (Breiman, 2001). Random forest selects random bootstrap samples from a given dataset to build a set of decision trees. The final prediction is based on the majority vote from the individually developed trees.

We chose three predictors representing the hydrological control factors of riparian vegetation: flood duration, water depth and shear stress. For the flood duration raster, the average flood duration of each grid cell during the growing periods between 1921 and 2016 was calculated (see Appendix B). Maps of water depth and shear stress were calculated for HQ10 (4100 m³/s) so that the whole floodplain could be represented. In addition, we tested the influence of the habitat age. The geomorphological age of different areas of the floodplain was derived through the analyses of the changes from water surfaces to sand and gravel bars on historic maps (Diaz-Redondo et al., 2017).

We built two different models: SM1 was based on the hydrological predictors and geomorphological age, SM2 considered only the hydrological predictors. The models were set to grow 1000 trees based on bootstrap samples from the calibration plots. The sample was balanced to compensate for the overrepresentation of softwood forest in the reference plots which according to an expert-based PNV map of 2017 covered around 10% of the study area. The statistical modelling was done in the R environment using the “randomForest” package (Liaw and Wiener, 2002).

2.5. Gradient model (GM)

The German Federal Institute of Hydrology (BfG) developed a gradient model for the large-scale assessment of the main floodplain vegetation types for the free-flowing parts of River Rhine and Elbe in Germany. It is based on the field-observation that the occurrence of *Salix alba* at a site correlates with the relative height to the mean water level and the mean annual flood duration (Schleuter, 2014). The mean annual flood duration of a grid cell is calculated as follows (Schleuter, 2016):

$$F = -70.599 * \ln(X + 0.50) + 88.711$$

F = mean annual flood duration

X = relative height to mean water level (m)

The PNV types are then assigned based on expert knowledge (Table 1).

Table 1
Main PNV-types, relative height to the mean water level and mean annual flood duration according to the GM (Schleuter, 2016).

PNV-type	Relative height to mean water level (m)	Mean annual flood duration
Reeds, annuals	< -0.14	220–160
Softwood forest	-0.14 –0.63	160–80
Transition forest	0.63 –1.23	80–50
Hardwood forest	1.23 >	50–0

2.6. Model validation and comparison

For validation of the predictive performance all models were tested against the same set of geographically separated reference plots. Based on a confusion matrix we calculated the global metrics overall accuracy (OA) and kappa coefficient (K) (Cohen, 1960), which corrects the OA for chance agreement. In addition, we calculated Sensitivity and Specificity for each PNV class. For comparison between the models all area wide predictions were directly compared to each other by calculating the metrics Kappa (K), Kappa Location (KLoc) and Kappa histogram (Khist). KLoc describes the similarity of spatial allocation of categories of the two compared maps, and Khist describes the quantitative similarity (Pontius, 2000). The following rating system was applied: values greater than 0.75 indicate very good-to-excellent agreement, values between 0.40 and 0.75 indicate fair-to-good agreement, and values of 0.40 or less indicate poor agreement (Landis and Koch, 1977).

3. Results

The results of the different approaches to reconstruct the PNV of our study area are shown in Fig. 2. The overall agreement between the models was good. All approaches predicted hardwood forests to be the dominant vegetation class followed by transition forests, softwood forests and reeds (Table 2). Along the same sequence the agreement of the predictions between the approaches diminished (Table 3). Hardwood forests were predicted for about 50% of the study area by all models and the agreement (spatial and quantitative) was excellent to very good. Transition forests were estimated to cover around 35% by DM, SM1 and SM2 but only 26% by GM. The similarity of the predictions of DM and SM1/2 was very good but only fair when compared to GM. Softwood forest were predicted on only 7% of the area by the DM but nearly twice as much by the other models. The agreement between the DM and SM1/2 still can be considered fair but showed high discrepancies to GM. Reeds presented poor agreement between all models, especially spatially.

3.1. Validation

Overall the DM, SM1 and SM2 showed good predictive performance, and that of the GM was fair (see Table 4). Notably, SM1 and SM2 performed identically. All models were unable to detect reeds (sensitivity = 0). Softwood forest and hardwood forests were predicted with very good accuracy. But SM1, SM2 and GM only identified about 50% of transition forest reference plots correctly.

The “Mean Decrease Accuracy” and “Mean Decrease Gini” measures of the random forest models both revealed flood duration to be the most

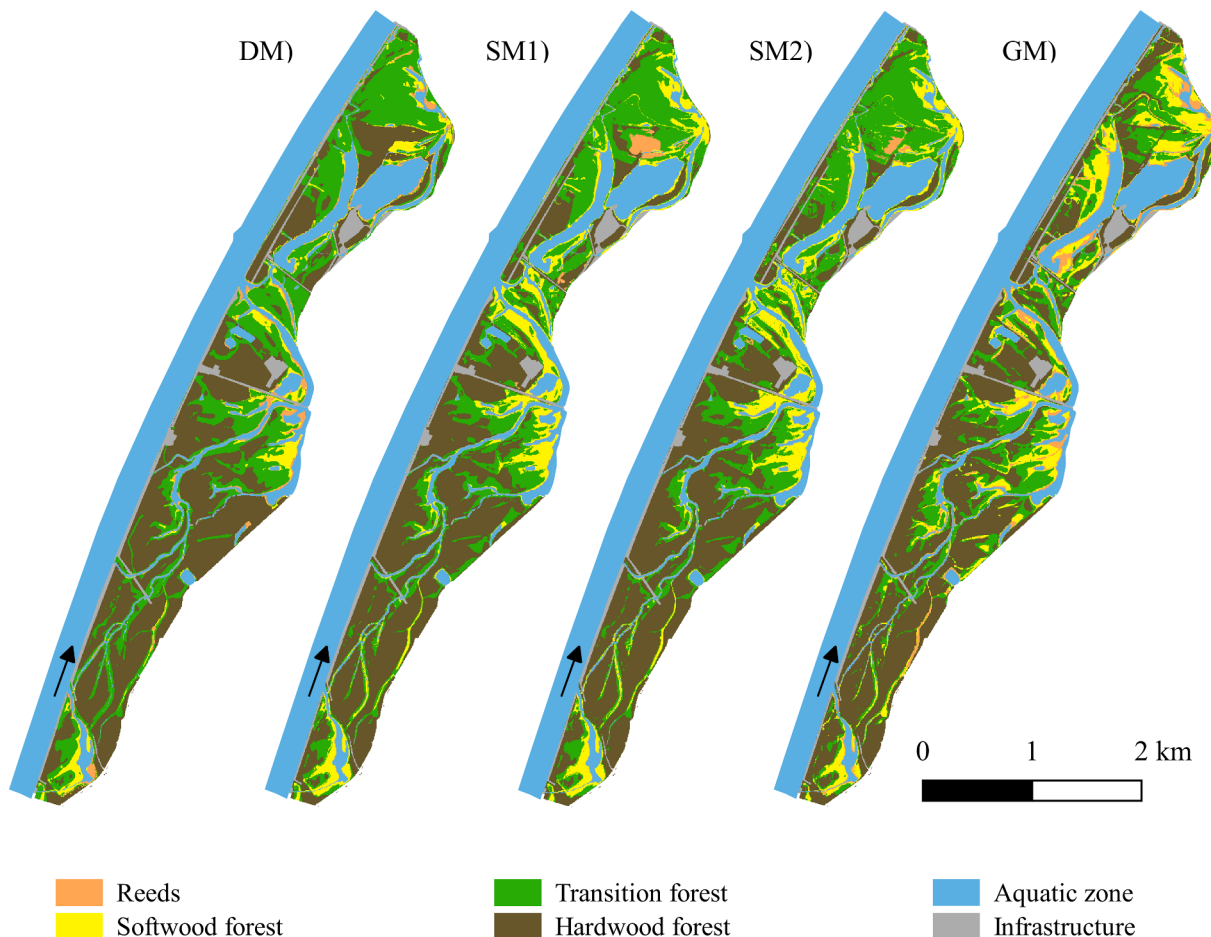


Fig. 2. Predicted distribution of PNV types by the 4 modelling approaches.

Table 2
Total areas of the PNV types predicted by the 4 modelling approaches.

		DM	SM1	SM2	GM
Reeds	Area (ha)	17.15	12.93	15.12	28.09
	Area (%)	3.5	2.6	3	5.7
Softwood forest	Area (ha)	32.19	70.75	70.40	78.67
	Area (%)	6.5	14.37	14.2	15.9
Transition forest	Area (ha)	183.25	164.28	161.34	129.29
	Area (%)	36.9	33.3	32.6	26.1
Hardwood forest	Area (ha)	263.43	247.75	248.85	259.93
	Area (%)	53.1	50.0	50.2	52.4

important predictor. “Habitat age” and “shear stress” were the least important ones.

4. Discussion

The equally good performances of the dynamic and static modelling approaches in predicting the PNV of our study area support the hypothesis that due to the loss of natural disturbance dynamics the riparian vegetation in our study area has reached a stable equilibrium with the hydrological control factors.

Sensitivity analyses of the statistic model and the DM (Ochs et al., 2019) revealed that the PNV is mainly determined by “flood duration”. But we show that the resulting pattern of softwood, transition and hardwood forest is explained equally well by a static average as a reconstruction of the temporal dynamics of the flood regime (DM). Even more, the fair results of the gradient approach show that the relative height to the mean water level also captures most of the influencing factor of riparian vegetation. With the predictor “habitat age”, we wanted to include a time dimension to the static modelling approach as indication of a possible successional progression. However, roughly 150 years after geomorphological changes have been impeding habitat age proved to have no influence on the present vegetation communities. The transition of the large-scale dynamic equilibrium of natural floodplain ecosystem to a more mature and stable state after river regulation has also been recognized by other studies (Diaz-Redondo et al., 2017; Hohensinner et al., 2004; Ollero, 2010; Tockner and Stanford, 2002) and has been mainly attributed to an impediment of morphologic dynamics through bank stabilization and flow regulation (Florsheim et al., 2008; Hohensinner et al., 2014).

To allow for the comparison of the model predictions we validated the results against a geographically separated holdout sample. The spatial blocking strategy increases the independency of the sample and allow an effective test of a models transferability (Roberts et al., 2017; Wenger and Olden, 2012). It meant however, a trade-off with the sample size used for calibration of the statistical model which already had to be considered small (Wisiz et al., 2008). Nevertheless, random forests are recognized as one of the most accurate species distribution modelling techniques (Cutler et al., 2007; Elith et al., 2006). Also, some confidence about our results can be drawn from the good agreement between the modelling approaches themselves. The reference plots were identified based on indicator species from the herb and shrub layers (see Table A1) that usually develop without direct human manipulation (Gilliam, 2007; Metzger and Schultz, 1984). As opposed to area-wide expert based assessments of PNV that are often used to validate ecological models in areas of high anthropogenic transformation (Hickler et al., 2012; Somodi et al., 2017) the reference plots are not extrapolated and therefore more comprehensive and less prone to uncertainties.

All tested modelling approaches simplify the complex floodplain ecosystem and are based on several assumptions. They assume that in our study area the hydrological control factors are most relevant and neglect other factors that are known to influence plant communities in

Table 3
Agreement metrics between the four modelling approaches (green = good-to-excellent; yellow = fair-to-good; grey = poor).

		SM1			SM2			GM		
		K	Kloc	Khist	K	Kloc	Khist	K	Kloc	Khist
DM		0.59	0.68	0.87	0.53	0.60	0.87	0.42	0.52	0.81
Reeds		0.01	0.10	0.86	0.10	0.10	0.93	0.36	0.48	0.54
Softwood forest		0.43	0.74	0.59	0.44	0.74	0.60	0.25	0.46	0.54
Transition forest		0.55	0.60	0.92	0.46	0.51	0.72	0.30	0.40	0.75
Hardwood forest		0.74	0.79	0.94	0.68	0.72	0.94	0.60	0.61	0.99
SM1					0.87	0.88	0.98	0.51	0.58	0.88
Reeds					0.72	0.79	0.92	0.14	0.235	0.61
Softwood forest					0.96	0.96	0.99	0.44	0.43	0.92
Transition forest					0.83	0.84	0.99	0.42	0.50	0.83
Hardwood forest					0.89	0.89	0.99	0.71	0.74	0.95
SM2								0.51	0.56	0.89
Reeds								0.16	0.23	0.68
Softwood forest								0.41	0.44	0.93
Transition forest								0.42	0.50	0.85
Hardwood forest								0.70	0.72	0.95

floodplains. Regarding the occurrence of reeds this seems to be an oversimplification since no model was able to detect it. The proliferation and dominance of *Phragmites australis* can be linked to nutrient competition and allelopathy (Hazelton et al., 2014; Uddin and Robinson, 2018). The fixed topographic input and disregard of the complex hydro-morphological processes normally occurring within the floodplain (Gurnell, 2016) can be justified in part by river regulation measures and artificially stabilized banks (a further in-depth discussion of the uncertainties regarding the dynamic model Casimir vegetation can be found here: Benjankar et al., 2011; Ochs et al., 2019). Another obvious source of prediction bias for both the statistic and dynamic model are possible errors in the hydrological model and the historic maps that were used for parameterization.

In addition to the predictive performance, other important criteria when choosing a model are the required resources and deployment time. The simulation of succession dynamics for nearly 150 years was only possible with access to data of high spatiotemporal resolution and a high level of expert knowledge as well as a laborious calibration process. The static models on the other hand needed less data, know-how and time. Especially the very simple gradient model (GM) which still showed fair agreement with the other modelling approaches doesn't even need hydraulic simulations since it is only based on the relative distance to the mean water level.

Table 4
Accuracy measures of the four modelling approaches (green = good-to-excellent; yellow = fair-to-good; grey = poor).

		DM	SM1	SM2	GM
OA		0.80	0.76	0.76	0.69
	Kappa	0.72	0.65	0.65	0.54
Reeds	Sensitivity	0	0	0	0
	Specificity	0.97	1	1	0.97
Softwood forest	Sensitivity	0.72	0.90	0.90	0.72
	Specificity	1	0.90	0.90	1
Transition forest	Sensitivity	0.85	0.54	0.54	0.46
	Specificity	0.90	0.97	0.97	0.96
Hardwood forest	Sensitivity	1	1	1	1
	Specificity	0.85	0.77	0.77	0.59

4.1. Conclusion

The high degree of transformation of large river floodplains through forestry and agriculture makes PNV a valuable concept, particularly as a benchmark for conservation measures. Although the conceptual and methodological issues around PNV are much discussed (Chiarucci et al., 2010; Loidi and Fernández-González, 2012; Somodi et al., 2012) the specific challenges for its reconstruction in river flood plains have gained little attention. Because natural floodplains are a disturbance-driven ecosystem, the classical, static PNV definition is not reasonable. However, through the direct comparison of process-based and statistic modelling approaches for PNV we showed that after 150 years of river regulation and impediment of geomorphological dynamics the riparian

vegetation has reached a stable equilibrium state with its hydrologic control factors. A static perception of its PNV seems justified. Consequently, statistical models are the best option for its reconstruction, since they need relatively few resources (data, time, expert knowledge) and are reproducible.

Acknowledgements

The first author is part of the FLUVIO Doctoral Program, supported by a grant from the Fundação para a Ciência e Tecnologia (PD/BD/114354/2016).

We acknowledge the collaboration of the Karlsruhe Institute of Technology, Department of Wetland Ecology in Rastatt (Germany).

Appendix A

Table A1
Main PNV-types and their indicator species (Dister, 1980).

PNV-Type	Indicator species and forest layer (TL – tree layer, SL – shrub layer, HL – herb layer)	
Reeds	TL	–
	SL	–
	H	<i>Phragmites australis</i> <i>Agrostis gigantea</i> <i>Calystegia sepium</i> <i>Galium aparine</i>
Softwood forest	TL	<i>Salix alba</i>
	SL	<i>Salix alba</i>
	H	<i>Myosotis palustris</i> <i>Rhorippa amphibia</i> <i>Senetio paludosus</i> <i>Mentha aquatica</i> <i>Phalaris arundinacea</i> <i>Myosotis palustris</i> <i>Rubus caesius</i> <i>Galium palustre</i> <i>Phragmites australis</i> <i>Rorippa amphibia</i> <i>Symphytum officinale</i>
Transition forest	TL	<i>Salix alba</i>
	SL	<i>Cornus sanguinea</i> <i>Viburnum opulus</i> <i>Crataegus monogyna</i>
	HL	<i>Rubus caesius</i> <i>Phalaris arundinacea</i>
Hardwood forest	TL	<i>Fraxinus excelsior</i> <i>Acer platanoides</i> <i>Quercus robur</i> <i>Acer campestre</i> <i>Alnus incana</i> <i>Carpinus betulus</i>
	SL	<i>Cornus sanguinea</i> <i>Crataegus monogyna</i> <i>Viburnum opulus</i> <i>Ligustrum vulgare</i> <i>Corylus avellana</i>
	HL	<i>Rubus caesius</i> <i>Galium aparine</i> <i>Hedera helix</i> <i>Impatiens glandulifera</i> <i>Paris quadrifolia</i> <i>Viola reichenbachiana</i>

Appendix B. Calculation of flood duration

Map representations of flood duration were needed as input for the DM and static models. For the DM five representative years (dry, medium wet, wet, very wet and extreme wet) from the period 1921–2016 were selected based on their maximum, mean and minimum discharge and the representativeness of the flow duration curve (Table B1). For the SM the average flood duration of the vegetation period (1921–2016) was considered. To reduce the calculational efforts for the hydrodynamic modelling, 14 discharges were selected to best represent the average flow duration

curve of the vegetation period (Table B2). Using the two-dimensional hydrodynamic model, the water surface elevations (WSE) for these 14 discharges were calculated for the whole study area. In a first step the results from the irregular hydrodynamic model mesh were transferred into raster (regular grids). For the calculation of the flood duration raster of each representative year we attributed to the WSE of the 14 modeled discharges the number of days that they were exceeded during the growing period through analyzing the respective hydrographs (Table B2).

The final raster was then composed through superimposing the WSE of each modelled discharge and their number of days exceeded. The flood duration of the grid cell located between the water edge lines of two neighboring WSE was calculated according to the relative vertical position of the grid cell between the two calculated water surface elevation, as shown in Fig. B1 and the following equation.

Calculation of the flood duration of a grid cell located between the water edges of two modeled discharges

$$FD_n = FD_{Q1} - \Delta FD \frac{(z_n - WSE_{Q1})}{(WSE_{Q2} - WSE_{Q1})} \tag{B1}$$

with

FD_n = flood duration of grid cell n located between the water edge of flow rate Q1 and flow rate Q2, [days]

FD_{Q1} = flooding duration for flow rate Q1 [days]

ΔFD = difference between flooding duration for flow rate Q1 and Q2 [days]

z_n = terrain elevation of grid cell n, [meter above sea level]

WSE_{Q1} = Water surface elevation for flow rate Q1 (extrapolated,) [meter above sea level]

WSE_{Q2} = Water surface elevation for flow rate Q2, [meter above sea level]

Table B1

Representative years for the calculation of the flood duration grids and their characteristics.

Category	Year	Max. Discharge	Mean Discharge	Min. discharge	Discharge $\geq 2000 \text{ m}^3/\text{s}$ (days)
extremely wet	1999	4330	1917	818	
very wet	1965	3530	2048	1260	> 80
wet	1978	4140	1698	862	45–79
medium	1985	2720	1419	686	8–44
dry	1943	2140	1087	622	0–7

Table B2

Characteristic discharges and the numbers of days each is exceeded in the vegetation period of each representative year and in average (1921–2016).

Discharge (m^3/s)	Character	Days exceeded					
		dry (1943)	Medium (1985)	Wet (1978)	very wet (1965)	extremely wet (1999)	Average (1921–2016)
609	Other	183	183	183	183	183	183
1257	MQ	39	112	135	183	147	109
1600	Other	14	63	96	149	111	59
2000	Other	2	8	46	99	66	18
2200	Other	0	5	20	67	53	11
2450	Other	0	2	12	40	39	5
2724	HQ1	0	0	8	13	35	2
2850	HQ2	0	0	7	7	29	2
3000	Other	0	0	6	4	21	1
3150	Other	0	0	5	3	13	1
3594	HQ5	0	0	3	0	7	0
4100	HQ10	0	0	1	0	3	0
4900	HQ50	0	0	0	0	0	0
5300	HQ100	0	0	0	0	0	0

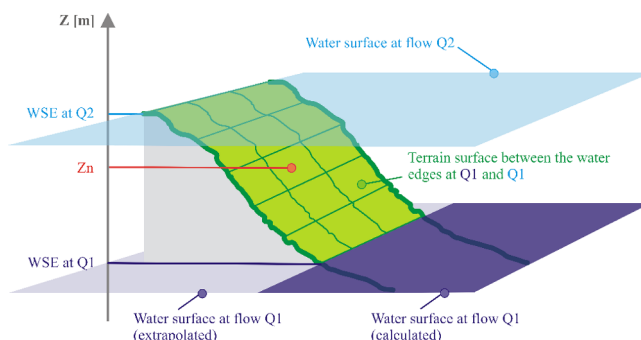


Fig. B1. Illustration for the calculation of the flood duration of a grid cell located between the water edges of two modeled discharges (Eq. (B1)).

Appendix C. CASiMiR model parameters

A detailed description of the model functioning as well as a description of the parametrization, calibration and validation of the model can be found in Ochs et al., 2019.

Table C1

Deduction of the starting condition derived from the analysis of the chronological sequence of forest, gravel and water surfaces on historical maps.

Historic land-use				Starting condition (1872)		
1816	1838	1852	1872	Succession phase	Age	Succession line
–	Gravel	Forest	Forest	ESWP	33	Sedimentation line
–	Water	Forest	Forest	ESWP	33	Siltation line
–	–	Gravel	Forest	ESWP	19	Sedimentation line
–	–	Water	Forest	ESWP	19	Siltation line
Forest	Forest	Forest	Forest	EFP	100	Sedimentation line
–	–	–	Grass-land, agriculture areas	HP	1	Secondary succession
–	–	–	Gravel-, Sand-bank	IP	1	Sedimentation line
–	–	–	Other forests	ESWP	33	Sedimentation line

Table C2

Succession lines, phases and age spans of the DM. The succession lines and phases were aggregated to match the main PNV types in the study area: IP, PP and HP to “Reeds”, SP and ESWP to “Softwood forest”, LSWP as “Transition forest” and EFP and TS to “Hardwood forest”.

Succession lines	Phase	Age/life span without disturbance (years)
Sedimentation lines	IP	0–1
	PP	2–3
	HP	4–9
	SP	10–15
	ESWP	16–59
	LSWP	60–99
	EFP	100–139
	TS	140–1000
Siltation lines	SW	20
	IP	0–1
	PP	2–3
	HP	4–15
	SP	16–25
	ESWP	26–69
	LSWP	70–109
	EFP	110–159
	TS	160–1000
Secondary succession	HP	0–5
	SP	6–29
	EFP	30–79
	TS	80–1000

Table C3

Water levels for the bank and floodplain zone that allow recruitment. The maximum water levels of the siltation lines are chosen so high that potential outliers will be included.

Succession lines	Bank zone		Floodplain zone	
	Min. water level (m)	Max. water level (m)	Min. water level (m)	Max. water level (m)
Sedimentation line	1	5	1	5
Siltation line	7	1000	7	1000
Secondary succession	1	5	1	5

Table C4
Expert rules of the DM controlling succession for the disturbance indicator shear stress.

Succession phase	Disturbance class – shear stress				
	Very low (0.1–2 N/m ²)	low (2–5 N/m ²)	Medium (5–50 N/m ²)	strong (50–200 N/m ²)	Very strong (> 200 N/m ²)
IP	no effect	remains in IP	remains in IP	remains in IP	remains in IP
PP	no effect	no effect	remains in PP	set back to IP	set back to IP
HP	no effect	no effect	remains in HP	set back to PP	set back to IP
SP	no effect	no effect	no effect	remains in SP	set back to IP
ESWP	no effect	no effect	no effect	remains in ESWP	set back to IP
LSWP	no effect	no effect	no effect	remains in LSWP	set back to IP
EFP	no effect	no effect	no effect	remains in EFP	set back to IP
TS	no effect	no effect	no effect	remains in TS	set back to IP

Table C5
Expert rules of the DM controlling succession for the disturbance indicator flood duration.

Succession phase	Disturbance class – flood duration				
	Very low (0–5 days)	low (5–20 days)	medium (20–70 days)	strong (70–120 days)	Very strong (110–183 days)
IP	no effect	no effect	remains in IP	remains in IP	remains in IP
PP	no effect	no effect	remains in PP	set back to IP	set back to IP
HP	no effect	no effect	no effect	remains in HP	set back to PP
SP	no effect	no effect	no effect	remains in SP	set back to PP
ESWP	no effect	no effect	no effect	no effect	remains in ESWP
LSWP	no effect	no effect	remains in LSWP	remains in LSWP	set back to ESWP
EFP	no effect	remains in EFP	remains in EFP	set back to LSWP	set back to LSWP
TS	no effect	remains in TS	remains in TS	set back to EFP	set back to LSWP

Appendix D. Supplementary data

Supplementary data to this article can be found online at <https://doi.org/10.1016/j.jher.2020.01.005>.

References

- Aggenbach, C.J.S., Pelsma, T.A.H.M., 2003. Hydro-ecological assessment of vegetation of Dutch river habitats. *River Syst.* 15, 199–210. <https://doi.org/10.1127/tr/15/2003/199>.
- Auble, G.T., Friedman, J.M., Scott, M.L., 1994. Relating riparian vegetation to present and future streamflows. *Ecol. Appl.* 4, 544–554. <https://doi.org/10.2307/1941956>.
- Baptist, M.J., Penning, W.E., Duell, H., Smits, A.J.M., Geerling, G.W., Van der Lee, G.E.M., Van Alphen, J.S.L., 2004. Assessment of the effects of cyclic floodplain rejuvenation on flood levels and biodiversity along the Rhine River. *River Res. Appl.* 20, 285–297. <https://doi.org/10.1002/rra.778>.
- Belz, J.U., Frauenfelber-Kääh, R., 2007. Das Abflussregime des Rheins und seiner Nebenflüsse im 20. Jahrhundert: Analyse, Veränderungen, Trends. Internationale Kommission für die Hydrologie des Rheingebietes.
- Benjankar, R., Egger, G., Jorde, K., Goodwin, P., Glenn, N.F., 2011. Dynamic floodplain vegetation model development for the Kootenai River, USA. *J. Environ. Manage.* 92, 3058–3070. <https://doi.org/10.1016/j.jenvman.2011.07.017>.
- Bernhardt, C., 2000. Die Rheinkorrektion. *Der Bürger im Staat* 50, 76–81.
- Bormann, F.H., Likens, G.E., 1979. *Pattern and Process in a Forested Ecosystem: Disturbance, Development and the Steady State Based on the Hubbard Brook Ecosystem Study*. Springer Science & Business Media.
- Bowman, D.M.J.S., Mcdonough, L., 1991. Tree species distribution across a seasonally flooded elevation gradient in the Australian monsoon tropics. *J. Biogeogr.* 18, 203–212.
- Breiman, L., 2001. Random forests. *Mach. Learn.* 45, 5–32. <https://doi.org/10.1023/A:1010933404324>.
- Buijse, A.D., Coops, H., Staras, M., Jans, L.H., van Geest, G.J., Grift, R.E., Ibelings, B.W., Oosterberg, W., Roozen, F.C.J.M., 2002. Restoration strategies for river floodplains along large lowland rivers in Europe. *Freshw. Biol.* 47, 889–907. <https://doi.org/10.1046/j.1365-2427.2002.00915.x>.
- Camporeale, C., Perucca, E., Ridolfi, L., Gurnell, A.M., 2013. Modeling the interactions between river morphodynamics and riparian vegetation. *Rev. Geophys.* 51, 379–414. <https://doi.org/10.1002/rog.20014>.
- Camporeale, C., Ridolfi, L., 2006. Riparian vegetation distribution induced by river flow variability: a stochastic approach. *Water Resour. Res.* 42. <https://doi.org/10.1029/2006WR004933>. n/a-n/a.
- Carranza, M.L., Ricotta, C., Fortini, P., Blasi, C., 2003. Quantifying landscape change with actual vs. potential natural vegetation maps. *Phytocoenologia* 33, 591–601. <https://doi.org/10.1127/0340-269X/2003/0033-0591>.
- Carrión, J.S., Fernández, S., 2009. The survival of the “natural potential vegetation” concept (or the power of tradition): COMMENTARY. *J. Biogeogr.* 36, 2202–2203. <https://doi.org/10.1111/j.1365-2699.2009.02209.x>.
- Chiarucci, A., Araújo, M.B., Decocq, G., Beierkuhnlein, C., Fernández-Palacios, J.M., 2010. The concept of potential natural vegetation: an epitaph? *J. Veg. Sci.* 21, 1172–1178. <https://doi.org/10.1111/j.1654-1103.2010.01218.x>.
- Church, M., 1995. Geomorphic response to river flow regulation: case studies and time-scales. *Regul. Rivers Res. Manage.* 11, 3–22. <https://doi.org/10.1002/rrr.3450110103>.
- Cohen, J., 1960. A coefficient of agreement for nominal scales. *Educ. Psychol. Meas.* 20, 37–46. <https://doi.org/10.1177/001316446002000104>.
- Cutler, D.R., Edwards, T.C., Beard, K.H., Cutler, A., Hess, K.T., Gibson, J., Lawler, J.J., 2007. Random forests for classification in ecology. *Ecology* 88, 2783–2792. <https://doi.org/10.1890/07-0539.1>.
- Díaz-Redondo, M., Egger, G., Marchamalo, M., Damm, C., de Oliveira, R.P., Schmitt, L., 2018. Targeting lateral connectivity and morphodynamics in a large river-floodplain system: the upper Rhine River. *River Res. Appl.* 1–11. <https://doi.org/10.1002/rra.3287>.
- Díaz-Redondo, M., Egger, G., Marchamalo, M., Hohensinner, S., Dister, E., 2017. Benchmarking fluvial dynamics for process-based river restoration: the upper Rhine river (1816–2014). *River Res. Appl.* 33, 403–414. <https://doi.org/10.1002/rra.3077>.
- Dister, E., 1980. *Geobotanische Untersuchungen in der hessischen Rheinaue als Grundlage für die Naturschutzarbeit*. Dissert. Univ. G/Sttingen, RFA.
- Dister, E., Gomer, D., Obrdlik, P., Petermann, P., Schneider, E., 1990. Water management and ecological perspectives of the upper Rhine's floodplains. *Regul. Rivers Res. Manage.* 5, 1–15. <https://doi.org/10.1002/rrr.3450050102>.
- Dotterweich, M., 2008. The history of soil erosion and fluvial deposits in small catchments of central Europe: deciphering the long-term interaction between humans and the environment – a review. *Geomorphology* 101, 192–208. <https://doi.org/10.1016/j.geomorph.2008.05.023>.
- Dynesius, M., Nilsson, C., 1994. Fragmentation and flow regulation of river systems in the northern third of the world. *Science* (80-) 266, 753–762. <https://doi.org/10.1126/science.266.5186.753>.
- Egger, G., Politti, E., Garófano-Gómez, V., Blamauer, B., Ferreira, M.T., Rivaes, R., Benjankar, R., Habersack, H., 2013. Embodying interactions between riparian vegetation and fluvial hydraulic processes within a dynamic floodplain model: concepts and applications, in: *Ecohydraulics: An Integrated Approach*. pp. 407–427. doi: 10.1002/9781118526576.ch24.
- Elith, J., Graham, C.H., Anderson, R.P., Dudík, M., Ferrier, S., Guisan, A., Hijmans, R.J., Huettmann, F., Leathwick, J.R., Lehmann, A., Li, J., Lohmann, L.G., Loiselle, B.A., Manion, G., Moritz, C., Nakamura, M., Nakazawa, Y., Overton, J.M., Peterson, A.T., Phillips, S.J., Richardson, K., Scachetti-Pereira, R., Schapire, R.E., Soberon, J.,

- Williams, S., Wisz, M.S., Zimmermann, N.E., 2006. Novel methods improve prediction of species' distributions from occurrence data. *Ecography* (Cop.) 29, 129–151. <https://doi.org/10.1111/j.2006.0906-7590.04596.x>.
- Ellenberg, H., 1996. Vegetation Mitteleuropas mit den Alpen. Ulmer, Stuttgart. doi: 10.1111/j.1654-1103.2012.01443.x.
- Florsheim, J.L., Mount, J.F., Chin, A., 2008. Bank erosion as a desirable attribute of rivers. *Bioscience* 58, 519. <https://doi.org/10.1641/B580608>.
- Föll, A., Egger, G., 2017. Site Conditions and Potential Natural Vegetation of the Rhine Floodplain near Rastatt. Karlsruhe Institute of Technology (KIT).
- Formann, E., Egger, G., Hauer, C., Habersack, H., 2014. Dynamic disturbance regime approach in river restoration: concept development and application. *Landsc. Ecol. Eng.* 10, 323–337. <https://doi.org/10.1007/s11355-013-0228-5>.
- Franz, E.H., Bazzaz, F.A., 1977. Simulation of vegetation response to modified hydrologic regimes: a probabilistic model based on niche differentiation in a floodplain forest. *Ecology* 58, 176–183. <https://doi.org/10.2307/1935119>.
- Fuchs, E., Schleuter, M., Rosenzweig, S., 2012. Integrated Floodplain Response Model (INFORM) as a tool to predict effects of human impacts on habitat availability for floodplain species. *River Syst.* 20, 41–53. <https://doi.org/10.1127/1868-5749/2012/0031>.
- Gallusser, W.A., Schenker, A., 1992. Die Auen am Oberrhein, Les zones alluviales du Rhin supérieur. Ausmaß und Perspektiven des Landschaftswandels am südlichen und mittleren Oberrhein seit 1800/Etendue et perspectives de l'évolution des paysages dans le secteur méridional et moyen du Rhin su.
- García-Arias, A., Francés, F., 2016. The RVDm: modelling impacts, evolution and competition processes to determine riparian vegetation dynamics. *Ecology* 9, 438–459. <https://doi.org/10.1002/eco.1648>.
- Geerling, G.W., Ragas, A.M.J., Leuven, R.S.E.W., Van Den Berg, J.H., Breedveld, M., Liefhebber, D., Smits, A.J.M., 2006. Succession and rejuvenation in floodplains along the river Allier (France). *Hydrobiologia* 565, 71–86. <https://doi.org/10.1007/s10750-005-1906-6>.
- Gilliam, F.S., 2007. The ecological significance of the herbaceous layer in temperate forest ecosystems. *Bioscience* 57, 845–858. <https://doi.org/10.1641/B571007>.
- Glavac, V., Grillenberger, C., Hakes, W., Ziezold, H., 1992. On the nature of vegetation boundaries, undisturbed flood plain forest communities as an example – a contribution to the continuum/discontinuity controversy. *Vegetatio* 101, 123–144. <https://doi.org/10.1007/BF00033197>.
- Gurnell, A.M., 2016. Hydrogeomorphology–ecology interactions in river systems. *River Res. Appl.* 22, 1085–1095. <https://doi.org/10.1002/rra>.
- Gurnell, A.M., Petts, G.E., 2002. Island-dominated landscapes of large floodplain rivers, a European perspective. *Freshw. Biol.* 47, 581–600. <https://doi.org/10.1046/j.1365-2427.2002.00923.x>.
- Habersack, H., Piégay, H., 2007. 27 River restoration in the Alps and their surroundings: past experience and future challenges. *Dev. Earth Surf. Process.* 11, 703–735. [https://doi.org/10.1016/S0928-2025\(07\)11161-5](https://doi.org/10.1016/S0928-2025(07)11161-5).
- Hall, G.M.J., McGlone, M.S., 2006. Potential forest cover of New Zealand as determined by an ecosystem process model. *New Zeal. J. Bot.* 44, 211–232. <https://doi.org/10.1080/0028825X.2006.9513019>.
- Hannon, B., Ruth, M., 1998. Modeling dynamic biological systems, Computers & Mathematics with Applications. doi: 10.1016/S0898-1221(98)90729-5.
- Härdtle, W., 1995. On the theoretical concept of the potential natural vegetation and proposals for an up-to-date modification. *Folia Geobot.* 30, 263–276. <https://doi.org/10.1007/BF02803708>.
- Hazelton, E.L.G., Mozdzer, T.J., Burdick, D.M., Kettenring, K.M., Whigham, D.F., 2014. Phragmites australis management in the United States: 40 years of methods and outcomes. *AoB Plants* 6, 1–19. <https://doi.org/10.1093/aobpla/plu001>.
- Herget, J., et al., 2005. Engineering impacts on river channels in the River Rhine catchment. *Erdkunde* 59, 294–319. <https://doi.org/10.3112/erdkunde.2005.03.07>.
- Hickler, T., Vohland, K., Feehan, J., Miller, P.A., Smith, B., Costa, L., Giesecke, T., Fronzek, S., Carter, T.R., Cramer, W., Kühn, I., Sykes, M.T., 2012. Projecting the future distribution of European potential natural vegetation zones with a generalized, tree species-based dynamic vegetation model. *Glob. Ecol. Biogeogr.* 21, 50–63. <https://doi.org/10.1111/j.1466-8238.2010.00613.x>.
- Hohensinner, S., Habersack, H., Jungwirth, M., Zauner, G., 2004. Reconstruction of the characteristics of a natural alluvial river-floodplain system and hydromorphological changes following human modifications: the Danube River (1812–1991). *River Res. Appl.* 20, 25–41. <https://doi.org/10.1002/rra.719>.
- Hohensinner, S., Jungwirth, M., Muhar, S., Schmutz, S., 2014. Importance of multi-dimensional morphodynamics for habitat evolution: Danube River 1715–2006. *Geomorphology* 215, 3–19. <https://doi.org/10.1016/j.geomorph.2013.08.001>.
- Hosner, J.F., Minckler, L.S., 1963. Bottomland hardwood forests of southern Illinois: regeneration and succession. *Ecology* 44, 29–41.
- Hughes, F.M.R., 1988. The ecology of African floodplain forests in semi-arid and arid zones: a review. *J. Biogeogr.* 127–140.
- Jackson, S.T., 2013. Natural, potential and actual vegetation in North America 24, 772–776. doi: 10.1111/jvs.12004.
- Jungwirth, M., Muhar, S., Schmutz, S., 2002. Re-establishing and assessing ecological integrity in riverine landscapes. *Freshw. Biol.* 47, 867–887. <https://doi.org/10.1046/j.1365-2427.2002.00914.x>.
- Justice, C., White, S.M., McCullough, D.A., Graves, D.S., Blanchard, M.R., 2017. Can stream and riparian restoration offset climate change impacts to salmon populations? *J. Environ. Manage.* 188, 212–227. <https://doi.org/10.1016/j.jenvman.2016.12.005>.
- Klimas, C., Murray, E., Foti, T., Pagan, J., Williamson, M., Langston, H., 2009. An ecosystem restoration model for the Mississippi alluvial valley based on geomorphology, soils, and hydrology. *Wetlands* 29, 430–450. <https://doi.org/10.1672/08-99.1>.
- Kowarik, I., 1987. The electronic publication Kritische Anmerkungen zum theoretischen Konzept der potentiellen natürlichen Vegetation mit Anregungen zu einer zeitgemäßen Modifikation has been archived at <http://publikationen.uni-frankfurt.de/> (repository of University Library Frankfurt, Germany).
- Lai, Y.G., 2008. SRH-2D version 2: Theory and User's Manual. Sediment. River Hydraul. River Flow Model. US Dep. Inter. Bur. Reclamation, Novemb.
- Landis, J.R., Koch, G.G., 1977. The measurement of observer agreement for categorical data. *Biometrics* 33, 159. <https://doi.org/10.2307/2529310>.
- Lenders, H.J.R., Leuven, R.S.E.W., Nienhuis, P.H., de Nooij, R.J.W., Van Rooij, S.A.M., 2001. BIO-SAFE: a method for evaluation of biodiversity values on the basis of political and legal criteria. *Landsc. Urban Plan.* 55, 121–137. [https://doi.org/10.1016/S0169-2046\(01\)00149-9](https://doi.org/10.1016/S0169-2046(01)00149-9).
- Leuschner, C., 1997. Das Konzept der potentiellen natürlichen Vegetation (PNV): Schwachstellen und Entwicklungsperspektiven. *Flora* 192, 379–391. [https://doi.org/10.1016/S0367-2530\(17\)30809-5](https://doi.org/10.1016/S0367-2530(17)30809-5).
- Liauw, A., Wiener, M., 2002. Classification and regression by randomForest. *R News* 2, 18–22.
- Loidi, J., Fernández-González, F., 2012. Potential natural vegetation: reburying or re-boring? *J. Veg. Sci.* 23, 596–604. <https://doi.org/10.1111/j.1654-1103.2012.01387.x>.
- Magilligan, F.J., Nislow, K.H., 2005. Changes in hydrologic regime by dams. *Geomorphology* 71, 61–78. <https://doi.org/10.1016/j.geomorph.2004.08.017>.
- Mahoney, J.M., Rood, S.B., 1998. Streamflow requirements for cottonwood seedling recruitment—an integrative model. *Wetlands* 18, 634–645.
- Menuz, D.R., 2011. Using Species Distribution Models to Assess Invasion Theory and Provide Management Recommendations for Riparian Areas in the Eastern Columbia and Western Missouri River Basins.
- Metzger, F., Schultz, J., 1984. Understory response to 50 years of management of a northern hardwood forest in upper Michigan. *Am. Midl. Nat.* 112, 209–223. <https://doi.org/10.2307/2425428>.
- Mitchell, F.J.G., 2005. How open were European primeval forests? Hypothesis testing using palaeoecological data. *J. Ecol.* 93, 168–177. <https://doi.org/10.1111/j.1365-2745.2004.00964.x>.
- Moravec, J., 1998. Reconstructed natural versus potential natural vegetation in vegetation mapping: a discussion of concepts. *Appl. Veg. Sci.* 1, 173–176. <https://doi.org/10.2307/1478946>.
- Mucina, L., 2010. Floristic-phytosociological approach, potential natural vegetation, and survival of prejudice. *Lazaroa* 31, 173–182. https://doi.org/10.5209/rev_LAZA.2010.v31.13.
- Myers, N., Mittermeier, R.A., Mittermeier, C.G., da Fonseca, G.A.B., Kent, J., 2000. Biodiversity hotspots for conservation priorities. *Nature* 403, 853–858. <https://doi.org/10.1038/35002501>.
- Naiman, R.J., Decamps, H., 1997. The ecology of interfaces: riparian zones. *Annu. Rev. Ecol. Syst.* 28, 621–658.
- Nilsson, C., Berggren, K., 2000. Alterations of riparian ecosystems caused by river regulation. *Bioscience* 50, 783–792. [https://doi.org/10.1641/0006-3568\(2000\)050\[0783:AORECB\]2.0.CO;2](https://doi.org/10.1641/0006-3568(2000)050[0783:AORECB]2.0.CO;2).
- Nilsson, C., Reidy, C.A., Dynesius, M., Revenga, C., 2005. Fragmentation and flow regulation of the world's large river systems. *Science* (80-) 308, 405–408. <https://doi.org/10.1126/science.1107887>.
- Nixon, E.S., Willett, R.L., Cox, P.W., 1977. Woody vegetation of a virgin forest in an eastern Texas river bottom. *Castanea* 42, 227–236.
- Ochs, K., Egger, G., Kopecki, I., Ferreira, T., 2019. Model-based reconstruction of the succession dynamics of a large river floodplain. *River Res. Appl.* 35, 944–954. <https://doi.org/10.1002/rra.3502>.
- Ollero, A., 2010. Channel changes and floodplain management in the meandering middle Ebro River, Spain. *Geomorphology* 117, 247–260. <https://doi.org/10.1016/j.geomorph.2009.01.015>.
- van Oorschot, M., Kleinhans, M., Geerling, G., Middelkoop, H., 2016. Distinct patterns of interaction between vegetation and morphodynamics. *Earth Surf. Process. Landforms* 41, 791–808. <https://doi.org/10.1002/esp.3864>.
- Pearlstone, L., McKellar, H., Kitchens, W., 1985. Modelling the impacts of a river diversion on bottomland forest communities in the Santee River floodplain, South Carolina. *Ecol. Modell.* 29, 283–302. [https://doi.org/10.1016/0304-3880\(85\)90057-2](https://doi.org/10.1016/0304-3880(85)90057-2).
- Petts, G.E., Gurnell, A.M., 2005. Dams and geomorphology: Research progress and future directions. *Geomorphology* 71, 27–47. <https://doi.org/10.1016/j.geomorph.2004.02.015>.
- Pieterse, N.M., Olde Venterink, H., Schot, P.P., Wassen, M.J., Verkroost, A.W.M., 1998. 4. Habitat and Vegetation Response Prediction for Meadows and Fens – Application of SMART-MOVE on a Regional Scale. *Demonstr. Proj. Dev. Integr. Manag. Plans Catchment Areas Small Trans-Border Lowl. Rivers River Dommel*. Rep. 4, 1–53.
- Pontius, R.G., 2000. Quantification error versus location error in comparison of categorical maps. *Photogramm. Eng. Remote Sensing*. [https://doi.org/Cited By \(since 1996\) 180 Export Date 10 May 2012](https://doi.org/Cited By (since 1996) 180 Export Date 10 May 2012).
- Pringle, C.M., Naiman, R.J., Bretschko, G., Karr, J.R., Oswood, M.W., Webster, J.R., Welcomme, R.L., Winterbourn, M.J., 1988. Patch dynamics in lotic systems: the stream as a mosaic. *J. North Am. Benthol. Soc.* 7, 503–524. <https://doi.org/10.2307/1467303>.
- Roberts, D.R., Bahn, V., Ciuti, S., Boyce, M.S., Elith, J., Guiller-Arroita, G., Hauenstein, S., Lahoz-Monfort, J.J., Schröder, B., Thuiller, W., Warton, D.L., Wintle, B.A., Hartig, F., Dormann, C.F., 2017. Cross-validation strategies for data with temporal, spatial, hierarchical, or phylogenetic structure. *Ecography* (Cop.) 40, 913–929. <https://doi.org/10.1111/ecog.02881>.
- Roberts, J., Ludwig, J.A., 2016. Riparian Vegetation Along Current-Exposure Gradients in Floodplain Wetlands of the River Murray, Australia Published by : British Ecological Society Stable URL : <http://www.jstor.org/stable/2260787> Accessed : 04-04-2016 04 : 55 UTC Your use of the JSTOR 79, 117–127.
- Robertson, P.a., Weaver, G.T., Cavanaugh, J.a., 1978. Vegetation and Tree Species

- Patterns near the Northern Terminus of the Southern Floodplain Forest. *Ecol. Monogr.* 48, 249–267.
- Runhaar, J., 2003. Natuurgericht landevaluatiesysteem (NATLES) versie 2. Alterra-rapport;550.
- Schleupner, C., Schneider, U.A., 2013. Allocation of European wetland restoration options for systematic conservation planning. *Land Use Policy* 30, 604–614. <https://doi.org/10.1016/j.landusepol.2012.05.008>.
- Schleuter, M., 2016. Calculation of flood duration in floodplains by means of a universally applicable formula. 11th ISE 2016, Melbourne, Aust. 711, 1–4.
- Schleuter, M., 2014. Computing the degradation of riparian floodplains by means of a water-level difference curve, “Salix231” – a new approach to determine riverbed level variations.
- Shi, H., Wen, Z., Paull, D., Jiao, F., 2016. Distribution of natural and planted forests in the Yanhe river catchment: have we planted trees on the right sites? *Forests* 7, 258. <https://doi.org/10.3390/f7110258>.
- Somodi, I., Molnár, Z., Czúcz, B., Bede-Fazekas, Á., Bölöni, J., Pásztor, L., Laborczi, A., Zimmermann, N.E., 2017. Implementation and application of multiple potential natural vegetation models – a case study of Hungary. *J. Veg. Sci.* 28, 1260–1269. <https://doi.org/10.1111/jvs.12564>.
- Somodi, I., Molnár, Z., Ewald, J., 2012. Towards a more transparent use of the potential natural vegetation concept – an answer to Chiarucci et al. *J. Veg. Sci.* 23, 590–595. doi: 10.1111/j.1654-1103.2011.01378.x.
- Stanford, J.A., Lorang, M.S., Hauer, F.R., 2005. The shifting habitat mosaic of river ecosystems. *SIL Proceedings 1922–2010* (29), 123–136. <https://doi.org/10.1080/03680770.2005.11901979>.
- Tockner, K., Stanford, J.A., 2002. Riverine flood plains: present state and future trends. *Environ. Conserv.* 29, 308–330. <https://doi.org/10.1017/S037689290200022X>.
- Tuxen, R., 1956. Die huetige potentielle natuerliche Vegetation als Gegenstand der Vegetationskarrierung. *Angew. Pflanzensoziologie* 13, 5–42.
- Uddin, M.N., Robinson, R.W., 2018. Can nutrient enrichment influence the invasion of *Phragmites australis*? *Sci. Total Environ.* 613–614, 1449–1459. <https://doi.org/10.1016/j.scitotenv.2017.06.131>.
- Ward, J.V., Stanford, J.A., 1995. Ecosystems and its disruption by flow regulation. *Regul. Rivers Res. Manag.* II, 105–119. doi: 10.1002/rrr.3450110109.
- Wasserstrassen- und Schifffahrtsverwaltung des Bundes (WSV), 2016. Digitales Geländemodell des Wasserlaufs (DGM-W).
- Wenger, S.J., Olden, J.D., 2012. Assessing transferability of ecological models : an underappreciated aspect of statistical validation 260–267. doi: 10.1111/j.2041-210X.2011.00170.x.
- Westhoff, V., Van Der Maarel, E., 1978. The braun-blanquet approach, in: *Classification of Plant Communities*. Springer, pp. 287–399.
- Whited, D.C., Lorang, M.S., Harner, M.J., Hauer, F.R., Kimball, J.S., Stanford, J.A., 2007. Climate, hydrologic disturbance, and succession: drivers of floodplain pattern. *Ecology* 88, 940–953. <https://doi.org/10.1890/05-1149>.
- Willis, K.J., Birks, H.J.B., 2006. What is natural? The need for a long-term perspective in biodiversity conservation. *Science* (80-) 314, 1261–1265. <https://doi.org/10.1126/science.1122667>.
- Wisn, M.S., Hijmans, R.J., Li, J., Peterson, A.T., Graham, C.H., Guisan, A., 2008. Effects of sample size on the performance of species distribution models 763–773. doi: 10.1111/j.1472-4642.2008.00482.x.
- Zerbe, S., 1998. Potential natural vegetation: validity and applicability in landscape planning and nature conservation. *Appl. Veg. Sci.* 1, 165–172. <https://doi.org/10.2307/1478945>.