



Cite this: *Phys. Chem. Chem. Phys.*,
2020, 22, 12939

The transformation of cuboctahedral to icosahedral nanoparticles: atomic structure and dynamics†

Philipp N. Plessow 

The rearrangement of transition metal nanoparticles from cuboctahedral to icosahedral structures is studied for up to 923 atoms. The atomic structure and temperature dependence of the transition are investigated with a well-defined collective variable. This collective variable describes the folding of the square fcc(100) facets into two triangular facets through a linear combination of the diagonals of all fcc(100) facets of all shells of the particle. Activation barriers are determined through harmonic transition state theory and constrained molecular dynamics simulations based on force field potentials. These calculations predict an activation entropy larger than 1 meV K⁻¹, leading to strongly temperature dependent activation barriers. Density functional theory calculations were additionally performed both as single point calculations and as full optimizations. Cu, Ag, Au and Ni clusters show low barriers for concerted, symmetric transition up to the 309-atomic clusters. In contrast, for Pd, Pt, Rh and Ir higher barriers are required, already for the 147-atomic clusters. With increasing barriers, an asymmetric but still concerted rearrangement becomes energetically more favorable than the fully symmetric transformation. The material-dependence of the transition can be correlated with the melting point of the bulk metals.

Received 27th March 2020,
Accepted 26th May 2020

DOI: 10.1039/d0cp01651a

rsc.li/pccp

1 Introduction

In the limit of large clusters (> 10⁴ atoms), the thermodynamically most stable metal particles generally have the structure of the bulk material, in particular fcc for fcc metals. For smaller particles, different structural motifs can be more stable, for example decahedral and icosahedral structures.^{1–6} Many properties, in particular the reactivity^{7,8} have been shown to depend on the particle shape. Which particle structures are observable is not only determined by their thermodynamic stability, but also by the rate with which they are formed or rearrange.^{9–11} This has implications also for supported nanoparticles, where it has been shown that transition metal particles can dynamically adapt to reaction conditions.^{12,13} On the other hand, the persistence of defects such as stacking faults in copper particles¹⁴ and grain boundaries in gold electrodes¹⁵ have also been proposed as the origin of the catalytic activity. Shape changes within a certain crystal structure can occur *via* single atom diffusion and can be modeled with 3D-lattice kinetic Monte Carlo simulations.^{16,17} For rearrangements between fcc and icosahedral clusters,

the lattice changes and a concerted transformation is possible, which is more challenging to model.

The Mackay icosahedron was proposed in 1962 as a potential cluster shape along with the realization that it can be generated by the distortion of a cuboctahedron.¹⁸ Icosahedral clusters have since then indeed been observed many times and have been found to be stable mainly in the range of small to intermediate clusters (< 1000 atoms).¹⁹ The stability of different cluster morphologies was also shown to depend on the interaction with the support for Ni and Cu clusters.²⁰ The transition from fcc to icosahedral particles itself has also been studied, mainly as a spontaneous process in molecular dynamics simulations (MDs).²¹ When studying the melting process of a gold cluster, Landman and coworkers have found clusters to form intermediate icosahedral structures prior to melting.²² Icosahedral gold clusters were also found upon simulated freezing.²³ Similar observations were made for nickel^{24,25} and palladium²⁶ clusters, where transitions involving icosahedral structures were also found prior to melting. Baletto and coworkers used MD and metadynamics simulations to study the transitions between decahedral, cuboctahedral and icosahedral clusters. Barriers were found to be accessible at room temperature up to Ni₅₆₁ and Cu₅₆₁, while higher barriers were found for Pd, Pt, Au and Ag.^{27–29} Barreateau *et al.* found energy barriers for Pd₁₄₇ and Rh₁₄₇ to be larger than 4 eV and larger than 10 eV for Pd₃₀₉ and Rh₃₀₉ using a tight binding approach.³⁰

Institute of Catalysis Research and Technology (IKFT), Karlsruhe Institute of Technology (KIT), Hermann-von-Helmholtz-Platz 1, 76344 Eggenstein-Leopoldshafen, Germany. E-mail: plessow@kit.edu; Tel: +49 721 608-24413

† Electronic supplementary information (ESI) available: Fitted parameters for the Gupta potential, an extensive study using parameters for the Gupta potential from the literature and the source code used for the Gupta potential. See DOI: 10.1039/d0cp01651a



This work is organized as follows. We will first introduce a new collective variable that is used to study the atomic structure of the rearrangement between cuboctahedral and icosahedral structures of copper particles. The energy barriers for this transformation are computed using DFT and various empirical force fields. The temperature dependence of the rearrangement is then analyzed based on force field MD simulations. Last, the barrier is compared for different transition and coinage metals.

2 Results and discussion

The transformation from cuboctahedral to icosahedral structures is shown for Cu_{309} in Fig. 1(a). The structural transformation can be described as a folding of the six square fcc(100)-facets into twelve triangular facets. For boranes, this mechanism was termed the diamond-square-diamond mechanism.³¹ This turns the cuboctahedron that consists of eight fcc(111)-facets and six fcc(100) facets into an icosahedron with 20 identical, triangular facets. In this process, the initially equally long diagonals of the fcc(100) facets distort so that one becomes longer, while the other

becomes shorter, forming an edge. This is shown in Fig. 1(a) and the difference of these diagonals, $d^+ - d^-$, which we measure between the corner atoms, can actually be used to construct a collective variable. In the collective variable $\zeta(s)$, we simply sum over these differences for all six fcc(100) facets of a given shell s . Optimizations are only robust, when this is done for all shells of the cuboctahedral particles, since all of these shells need to transform individually:

$$\zeta = N \sum_{s=1}^{\text{shells}} \underbrace{\sum_{f=1}^6 d_{s,f}^+ - d_{s,f}^-}_{\zeta(s)} \quad (1)$$

Here N is an arbitrary normalization factor and s runs over all shells of the particle, starting from the innermost shell enclosing 13 atoms ($s = 1$), then 55 atoms ($s = 2$) up to the outermost shell.

It is important to stress, that ζ is only a single degree of freedom despite containing the linear combination of many atomic distances. Furthermore, $\zeta(s)$ is only introduced for the sake of analysis, but is in fact never varied or fixed for an

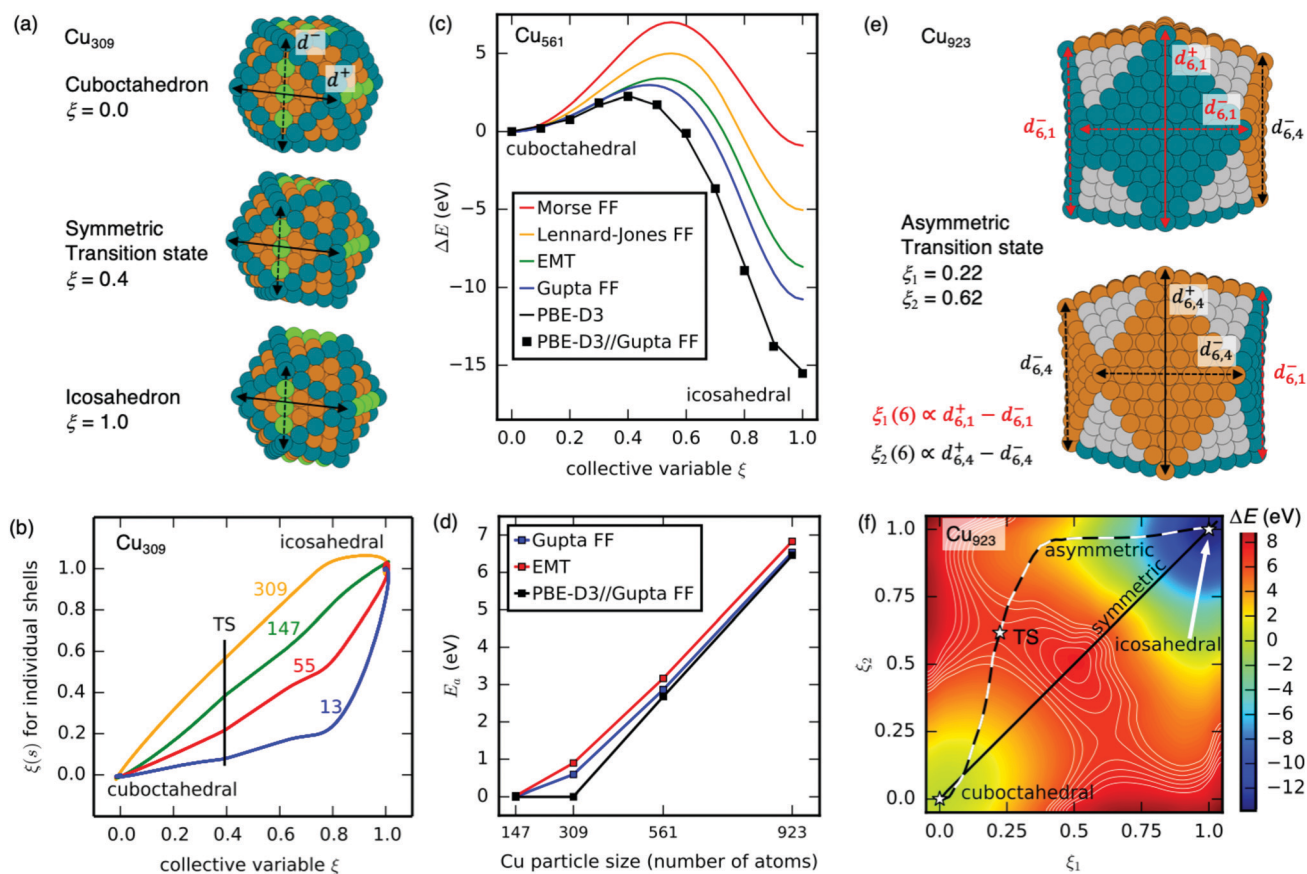


Fig. 1 Cuboctahedral-to-icosahedral transition of Cu clusters. (a) Atomic structure of the Cu_{309} particle at three different values of the collective variable ζ . Edge atoms of the cuboctahedral structure are highlighted in dark green. Additional edges formed in the icosahedral structure are shown in light green. The diagonals d^+ and d^- of the fcc(100) facets that contribute to the collective variable are indicated for the cuboctahedral structure. (b) The collective variable $\zeta(s)$ for each shell of the Cu_{309} particle as a function of the overall collective variable. (c) Relaxed potential energy profile for the transition of Cu_{561} obtained with DFT and force fields (FF). (d) Activation barrier for the transition as a function of size. (e) Two views of the atomic structure of the transition state for Cu_{923} . For the outermost shell ($s = 6$), the two different groups of fcc(100) facets are indicated with different colors. The corresponding diagonals $d_{6,1}^+$ and $d_{6,4}^+$ as well as their contribution to $\zeta_1(6)$ and $\zeta_2(6)$ are also shown. (f) Contour plot of the potential energy surface of Cu_{923} as a function of the two collective variables ζ_1 and ζ_2 . Selected contour lines with a distance of 0.25 eV are shown in the transition state region.



individual shell, since ξ is always applied as a sum over all $\xi(s)$. For Cu₃₀₉, four shells with six fcc(100) facets and two diagonals each lead to a linear combination of 48 atomic distances for the collective variable ξ . For the cuboctahedron, ξ equals zero, since the fcc(100) facets are squares. During the transition to the icosahedron, ξ grows to a final value which we choose to be $\xi = 1$, using an appropriate normalization constant N in eqn (1). Although all shells have to transform, they do not need to do so simultaneously and we indeed find that the outer shells transform first, when going from cuboctahedron to icosahedron. This can be seen in Fig. 1(b), where $\xi(s)$ is shown (with appropriate normalization for each shell) as a function of the collective variable for the overall particle ξ . The value of $\xi(s)$ for the outer shells clearly changes first and faster. The shell-by-shell rearrangement can be explained by the fact that this requires less atomic displacements at the same time. The order of the transformation can be rationalized by the fact that the entire particle slightly contracts when forming an icosahedron. In this respect it is interesting, that for Fe-clusters, DFT calculations have predicted structures to be stable which are only partially Mackay transformed.³²

In the present form, ξ is limited to specific cluster shapes, here cuboctahedral and closed-shell icosahedral. In this respect, geometric descriptors such as average coordination numbers and related quantities, as used in metadynamics simulations by Baletto and coworkers are more generally applicable.^{27,28} The advantage of the collective variable used here is that it allows to selectively drive only the cuboctahedral-to-icosahedral transition and gives very detailed insights into its atomic structure.

Fig. 1(c) shows the relaxed potential energy surface $E(\xi)$ for Cu₅₆₁ obtained for various methods through constrained optimizations, where ξ is held fixed and E is minimized with respect to all other degrees of freedom. As the shape of the curve suggests, there is only a single, well-defined transition state, which has been verified through normal mode analysis for the force-field methods. DFT-calculations have been carried out with the PBE functional³³ along with the D3 dispersion correction.³⁴ For Cu₅₆₁, PBE-D3 shows a moderately high barrier of 2.4 eV, while the formation of the icosahedral particle is strongly exothermic ($\Delta E = -15$ eV). Simple, classical force fields such as Lennard-Jones and Morse potentials give a completely different description, resulting in a much higher barrier and much less exothermic reaction. While Fig. 1(c) shows only one set of parameters for these potentials, this discrepancy with DFT cannot be resolved, since changing parameters for these two force fields will increase or lower both E_a and ΔE at the same time. Better agreement with DFT is reached with effective medium theory (EMT)³⁵ and the potential suggested by Gupta.^{36,37}

$$V = -x \sum_i \sqrt{\sum_{j \neq i} e^{-2q \left[\frac{r_{ij}}{r_0} - 1 \right]}} + A \sum_{i,j \neq i} e^{-p \left[\frac{r_{ij}}{r_0} - 1 \right]}, \quad (2)$$

with i, j as atomic indices, r_{ij} interatomic distances and with parameters (x, A, p, q, r_0) fitted to DFT structures (Table S1 in the ESI†) starting from initial values from the literature.³⁷ The EMT and Gupta potentials give relatively low barriers ($\Delta E_a < 3$ eV) while also

predicting a strongly exothermic reaction on the order of -10 eV. Due to its simpler functional form, we will from now on only use the Gupta potential for force field calculations, which also gives atomic structures that agree best with DFT. Another important finding shown in Fig. 1(c) is that DFT single point energy calculations using structures optimized with the Gupta potential compare very well with full DFT-optimizations. For Cu₅₆₁, the barrier from single point energy calculations is 2.6 eV, in good agreement with the value of 2.4 eV obtained from full optimization. This justifies studying the larger cluster Cu₉₂₃ only with single points at the DFT level of theory. Fig. 1(d) shows the activation barrier as a function of size and we find negligible barriers using PBE-D3 up to Cu₃₀₉ and then strongly increasing barriers, with $\Delta E_a > 6$ eV for Cu₉₂₃. The trends are similar for the Gupta and EMT potential, which however predict small ($\Delta E < 1$ eV) barriers for Cu₃₀₉. Similar trends are found with other density functionals: barriers for Cu₃₀₉ are below 0.2 eV and barriers for Cu₅₆₁ are 2.0 and 1.8 eV with BEEF-vdW³⁸ and PBESol,³⁹ respectively. This shows that the trends found with PBE-D3 are not specific to this functional, but are more generally observable and can be thus considered to be more reliable.

For the larger, 561- and 923-atomic copper nanoparticles we find that a less symmetric transformation is energetically more favorable and this will be referred to as the asymmetric transition. In this asymmetric transition, the six fcc(100) facets change no longer simultaneously but in two groups, consisting of three facets each. The variable ξ can be split into two components ξ_1 and ξ_2 in order to describe this behavior. The splitting of the six fcc(100) facets ($f = 1, \dots, 6$) into two groups again applies to all shells, so that one can rewrite eqn (1) for ξ_1 :

$$\xi_1 = N_1 \sum_{s=1}^{\text{shells}} \underbrace{\sum_{f=1}^3 d_{s,f}^+ - d_{s,f}^-}_{\xi_1(s)}. \quad (3)$$

and analogously for ξ_2 , in which one sums over the other three facets $f = 4, 5, 6$ for each shell. The three fcc(100) facets belonging to ξ_1 always enclose a common fcc(111) facet in the cuboctahedron. The remaining three fcc(100) facets, belonging to ξ_2 enclose the opposite fcc(111)-facet.

This is illustrated in Fig. 1(e), where the asymmetric TS is shown for Cu₉₂₃. In the transition state, the faster changing three fcc(100) facets (constituting ξ_2) have diagonal distances of 16.7 and 24.0 Å, while the slower changing three facets (constituting ξ_1) have diagonal distances of 19.3 and 22.8 Å. Fig. 1(f) shows a contour plot of the potential energy surface $E(\xi_1, \xi_2)$ as a function of the two collective variables ξ_1 and ξ_2 . The symmetric transformation $\xi_1 = \xi_2$, as observed for Cu₃₀₉ has a barrier that is higher by 0.6 eV for Cu₉₂₃ and by 0.1 eV for Cu₅₆₁.

When asymmetric transition is favored, as for Cu₉₂₃, only the asymmetric transition state is a true first order saddle point. In these cases, the highest point of the symmetric path is no longer a true transition state but a higher-order saddle point. This is because there are four different ways to group the six fcc(100) facets into the two coordinates ξ_1 and ξ_2 . When symmetric transition is favored, as for Cu₃₀₉, only the symmetric transition state is a true first order saddle point. In these cases,



there is no stationary point for asymmetric transition, meaning that a more asymmetric transition is simply increasingly less favorable.

To study kinetics, it is crucial to take into account thermal corrections and we have therefore performed MD simulations for Cu_{561} . Calculations were carried in the NVT ensemble with a Nosé–Hoover thermostat and a timestep of 5 fs. All simulations use the Gupta potential that has been implemented into a local version of LAMMPS.⁴⁰ We have first performed unconstrained MD simulations and determined the rate constant for the cuboctahedral-to-icosahedral transition from the average time after which it occurred. The transition was detected by a characteristic decrease of the maximum Cu–Cu distance (corresponding to opposite corners) below 12.3 Å. Activation barriers F_a were then calculated from these rate constants based on transition state theory (TST). Transitions are easily observed within a few thousand MD steps at $T > 500$ K. This corresponds to an activation free energy of $F_a < 0.5$ eV, which is surprisingly low given the computed activation energy of $E_a = 2.6$ eV. The activation free energy F_a increases significantly with lower temperatures, as shown in Fig. 2(a). At 450 K, transitions happen on average after around 600 ns (120 million MD steps), which requires multiple trajectories of 6 million steps each, to obtain sufficient transitions to determine the rate constant.

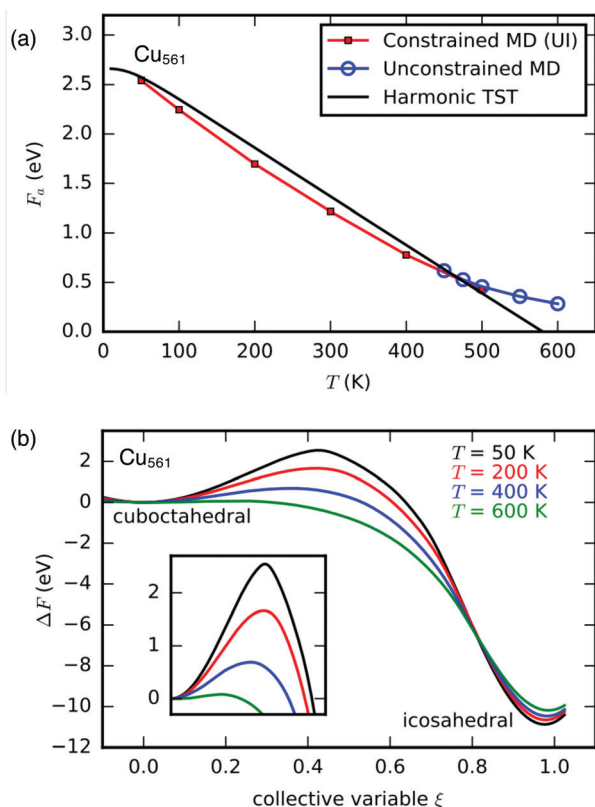


Fig. 2 Thermal effects computed for Cu_{561} using the Gupta potential. (a) Activation free energy as a function of temperature, as obtained from unconstrained MDs, harmonic TST and constrained MDs. (b) Free energy profile as obtained through constrained MDs using Umbrella Integration (UI). An inset shows the transition state region from $\xi = 0.0$ to 0.7.

Investigations at lower temperatures therefore require the use of constrained MD simulations. Using the collective variable ξ defined above, this was done with Umbrella Integration (UI). The Helmholtz free energy curves $F(\xi)$ were obtained from trajectories at 46 different values of ξ_0 , each 500 ps long, and are shown in Fig. 2(b) for various temperatures. With increasing temperature, the free energy barrier drops significantly, until the barrier almost disappears at 600 K. Activation free energies were obtained as described in ref. 41 from the free energy difference $\Delta F_{0 \rightarrow \xi^*} = F(\xi = \xi^*) - F(\xi = 0)$, where ξ^* refers to the maximum in the free energy diagram:

$$F_a = \Delta F_{0 \rightarrow \xi^*} - k_B T \ln \left[\frac{h \langle |\dot{\xi}^*| \rangle}{k_B T} P(\xi = 0) \right], \quad (4)$$

with the Boltzmann constant k_B and the normalized initial state probability distribution $P(\xi)$ and the average velocities at the transition state $\langle \dot{\xi}^* \rangle$. The obtained barriers F_a are shown in Fig. 2(a) as a function of temperature and agree well with the predictions obtained both from harmonic transition state theory and unconstrained MD simulations. A similar temperature-dependence is found for other metals and parameterizations of the Gupta potential from the literature^{9,37} (see the ESI†).

This clearly shows that the activation free energy is strongly temperature dependent, going from high barriers (> 1 eV) below 300 K to negligible barriers at 500 K. This gives the appearance of a temperature-driven phase transition like melting, which is clearly not the case, but is due to the high activation entropy. It is also worth noting that previous investigations have found the stability of nanoparticles, as modeled with force fields, to depend significantly on temperature.^{42,43} While the cuboctahedral particles studied in this work are in all cases less stable than the icosahedral structures, it is worth noting that cuboctahedral particles are not particularly stable fcc structures. This is because they correspond to Wulff constructions with equal 100- and 111-surface energies, while the actual surface energies of 111-surfaces are generally lower.

In addition to Cu clusters, other fcc metals have been studied. Ag, Au and Ni behave very similarly to Cu in that they show low barriers for the cuboctahedral-to-icosahedral transition up to the 309-atomic cluster and rearrange symmetrically up to these sizes (Table 1). They can also be very well described with the discussed collective variable and full DFT-optimization is feasible up to the

Table 1 Activation energies E_a in eV obtained with DFT (PBE-D3) for the cuboctahedral-to-icosahedral transition of clusters of size n for various pure metals. Activation energies were determined as the energy difference between the highest-energy image of either NEB or constrained optimization and the energy of the cuboctahedral structure

n	Cu	Ag	Au	Ni	Pd	Pt	Rh	Ir
147	0.0	0.0	0.0	0.0	1.8 ^a	1.8 ^a	4.7 ^a	6.4 ^a
309	0.0	0.9	0.0	0.9 ^b				
561	2.4	3.9 ^b	2.8 ^b	4.8 ^b				

^a Asymmetric transition optimized through NEB calculations. ^b Structures were obtained from constrained optimization with the Gupta potential.



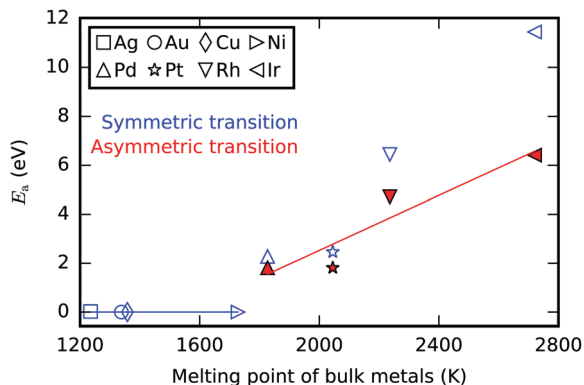


Fig. 3 Activation energy E_a at the PBE-D3 level of theory for the cuboctahedral-to-icosahedral transition of the 147-atomic cluster of various fcc-metals as a function of the experimental bulk melting temperature.⁴⁵

309-atomic clusters. Pd, Pt, Rh and Ir, however, behave very differently, as they show generally higher barriers and rearrange asymmetrically already at smaller cluster sizes. Here, DFT-optimizations were carried out with the NEB method⁴⁴ using 7 to 12 images (see also Fig. S3, ESI[†]). The barriers for the 147-atomic clusters are higher than 1.5 eV and the asymmetric transition is energetically more favorable, for Rh and Ir by more than 1 eV. Again, similar results are obtained with the PBEsol and BEEF-vdW functionals. Fig. 3 shows the barriers of the 147-atomic clusters as a function of the experimental melting point.⁴⁵ It can be seen that the barrier generally increases with the melting point. The elements with the lowest melting points, Ag, Au, Cu and Ni show a negligible barrier. The activation energy increases dramatically from Pd and Pt (both 1.8 eV) to Rh (4.7 eV) and Ir (6.4 eV). While the activation barrier for the cuboctahedral-to-icosahedral transition is clearly correlated with the bulk melting point, the underlying reason is not obvious. Although the rearrangement to the icosahedral structure is not a melting transition, it has two properties in common: an increase in energy caused by distortion/destruction of the fcc-structure and an (intermediate) gain in entropy. One can speculate that both the energetic cost and the entropic gain are related for melting and the cuboctahedral-to-icosahedral transition and therefore change systematically between different metals.

3 Conclusions

We have proposed a reaction coordinate that allows the systematic investigation of the cuboctahedral-to-icosahedral transition. The transformation occurs *via* a single transition state, albeit shell-wise and, for higher barriers, also in an asymmetric fashion, where the six fcc(100) facets transform in two groups. The concept of the collective variable in this work that is adapted specifically to a certain transition should also be applicable to other transitions and more challenging situations, such as nanoparticles interacting with supports or adsorbates. Cu, Ag, Au and Ni show low activation barriers (<1 eV) for the transition from cuboctahedron to icosahedron up to the 309-atomic clusters. Using constrained

MD simulations, the transformation can be studied over a wide temperature range and the free energy barrier is shown to be strongly temperature dependent. The high activation entropy lowers the activation free energy for the case of Cu₅₆₁ from 2.6 eV at $T = 0$ K to 0.5 eV at $T = 500$ K. Pd, Pt, Rh and Ir show barriers higher than 1.5 eV already for the 147-atomic cluster, where the asymmetric transition is clearly preferred. While all calculations in this work were carried out for isolated particles, it can be expected that many results, such as the strong temperature dependence and the correlation of barriers with the bulk melting point also apply to supported nanoparticles.

4 Computational details

4.1 DFT calculations

DFT-calculations were carried out with a plane-wave cutoff of 300 eV, Gaussian smearing with $\sigma = 0.05$ eV using the projector augmented wave method (PAW) with standard PAW potentials and the VASP program in version 5.4.1.^{46,47} Clusters were separated by at least 12 Å and k -point sampling was restricted to the Γ -point. DFT calculations for nickel particles were performed spin-polarized. The barrier from constrained optimizations was determined as the maximum energy along ξ . Optimizations have been carried out with the ASE,⁴⁸ where the constraint was implemented in a local version.⁴⁹ Optimizations were carried with a convergence criterion of 0.01 eV Å⁻¹ for minimizations and constrained optimizations and 0.05 eV Å⁻¹ for NEB calculations.

4.2 Force field calculations

All optimizations were carried out with the ASE⁴⁸ and a convergence criterion of 0.1 meV Å⁻¹. Tight convergence thresholds are necessary due to the very low curvatures and the resulting low frequency vibrations. The imaginary frequencies for the transition mode are on the order of 10 cm⁻¹. All transition states were verified to have only a single imaginary frequency. The connectivity was furthermore checked through small displacements along the transition mode followed by optimizations that led to icosahedron and cuboctahedron, respectively. Harmonic frequencies were calculated from a numerical Hessian computed using finite differences.

4.3 MD simulations

All MD simulations were performed using LAMMPS⁴⁰ with the Gupta potential and the parameters in Table S1 in the ESI.[†] The Gupta potential was implemented into a local version of LAMMPS and the additional subroutine is also provided as ESI.[†] Unconstrained MDs were analyzed based on the average transition time ($\langle t \rangle$), which was used to determine the rate constant $k = 1/\langle t \rangle$. The activation free energy F_a was then determined from transition state theory, $k = k_B T h^{-1} \exp(-F_a/(k_B T))$.

Umbrella integration⁵⁰ was performed using a harmonic potential $\kappa/2(\xi - \xi_0)^2$ with $\kappa = 5$ eV (NÅ²)⁻¹, where N is the normalization constant in eqn (1). At $T \geq 500$ K, additional potentials are required to prevent artificial reconstructions that cause the corner atoms, for which ξ is defined, to diffuse over



the cluster surface. These additional pairwise potentials can be chosen to act only from interatomic distances large enough to not perturb regular vibrations. The constraints were applied between all pairs of atoms in the outer shell (atom 1) and all atoms in the outer or second shell (atom 2) if the distance d between atom 1 and 2 is smaller than d_1 both in the icosahedron and in the cuboctahedron. A quadratic attractive potential $k/2(d - d_2)^2$ with $k = 50 \text{ eV \AA}^{-2}$ was applied for these pairs for distances $d > d_2$. The distance $d_1 = 3.0 \text{ \AA}$ was chosen to capture the nearest neighbor distance and $d_2 = 3.4 \text{ \AA}$ was chosen larger, to not significantly perturb regular vibrations. The effect of these additional potentials was carefully checked by varying these parameters. For example for Cu_{561} , at a temperature of 500 K, increasing d_2 to 3.8 \AA changes the final free energy barrier by 0.02 eV.

Conflicts of interest

There are no conflicts to declare.

Acknowledgements

The author acknowledges support by the state of Baden-Württemberg through bwHPC (bwunicluster and JUSTUS, RV bw17D011). Financial support from the Helmholtz Association is also gratefully acknowledged.

References

- 1 K. Koga, T. Ikeshoji and K. I. Sugawara, *Phys. Rev. Lett.*, 2004, **92**, 115507.
- 2 J. M. Rahm and P. Erhart, *Nano Lett.*, 2017, **17**, 5775–5781.
- 3 B. Fleury, R. Cortes-Huerto, O. Tache, F. Testard, N. Menguy and O. Spalla, *Nano Lett.*, 2015, **15**, 6088–6094.
- 4 A. L. Garden, A. Pedersen and H. Jonsson, *Nanoscale*, 2018, **10**, 5124–5132.
- 5 H. Li, L. Li, A. Pedersen, Y. Gao, N. Khetrpal, H. Jonsson and X. C. Zeng, *Nano Lett.*, 2015, **15**, 682–688.
- 6 D. M. Foster, R. Ferrando and R. E. Palmer, *Nat. Commun.*, 2018, **9**, 1323.
- 7 R. Narayanan and M. A. El-Sayed, *Nano Lett.*, 2004, **4**, 1343–1348.
- 8 K. Sytwu, F. Hayee, T. C. Narayan, A. L. Koh, R. Sinclair and J. A. Dionne, *Nano Lett.*, 2018, **18**, 5357–5363.
- 9 F. Baletto, A. Rapallo, G. Rossi and R. Ferrando, *Phys. Rev. B: Condens. Matter Mater. Phys.*, 2004, **69**, 235421.
- 10 D. M. Wells, G. Rossi, R. Ferrando and R. E. Palmer, *Nanoscale*, 2015, **7**, 6498–6503.
- 11 D. Pearmain, S. J. Park, A. Abdela, R. E. Palmer and Z. Y. Li, *Nanoscale*, 2015, **7**, 19647–19652.
- 12 P. L. Hansen, J. B. Wagner, S. Helveg, J. R. Rostrup-Nielsen, B. S. Clausen and H. Topsøe, *Science*, 2002, **295**, 2053–2055.
- 13 P. Nolte, A. Stierle, N. Y. Jin-Phillipp, N. Kasper, T. U. Schulll and H. Dosch, *Science*, 2008, **321**, 1654–1658.
- 14 M. Behrens, F. Studt, I. Kasatkin, S. Kuhl, M. Havecker, F. Abild-Pedersen, S. Zander, F. Girgsdies, P. Kurr, B. L. Kniep, M. Tovar, R. W. Fischer, J. K. Nørskov and R. Schlogl, *Science*, 2012, **336**, 893–897.
- 15 R. G. Mariano, K. McKelvey, H. S. White and M. W. Kanan, *Science*, 2017, **358**, 1187–1191.
- 16 L. Li, P. N. Plessow, M. Rieger, S. Sauer, R. S. Sanchez-Carrera, A. Schaefer and F. Abild-Pedersen, *J. Phys. Chem. C*, 2017, **121**, 4261–4269.
- 17 K. C. Lai and J. W. Evans, *Phys. Rev. Mater.*, 2019, **3**, 026001.
- 18 A. L. Mackay, *Acta Crystallogr.*, 1962, **15**, 916–918.
- 19 T. Ikeshoji, G. Torchet, M. F. de Feraudy and K. Koga, *Phys. Rev. E: Stat., Nonlinear, Soft Matter Phys.*, 2001, **63**, 031101.
- 20 M. Eckhoff, D. Schebarchov and D. J. Wales, *J. Phys. Chem. Lett.*, 2017, **8**, 5402–5407.
- 21 H.-S. Nam, N. M. Hwang, B. D. Yu, D.-Y. Kim and J.-K. Yoon, *Phys. Rev. B: Condens. Matter Mater. Phys.*, 2005, **71**, 233401.
- 22 C. L. Cleveland, W. D. Luedtke and U. Landman, *Phys. Rev. Lett.*, 1998, **81**, 2036.
- 23 H. S. Nam, N. M. Hwang, B. D. Yu and J. K. Yoon, *Phys. Rev. Lett.*, 2002, **89**, 275502.
- 24 D. Schebarchov and S. C. Hendy, *Phys. Rev. Lett.*, 2005, **95**, 116101.
- 25 Z. Zhang, W. Hu and S. Xiao, *Phys. Rev. B: Condens. Matter Mater. Phys.*, 2006, **73**, 125443.
- 26 D. Schebarchov and S. C. Hendy, *Phys. Rev. B: Condens. Matter Mater. Phys.*, 2006, **73**, 121402(R).
- 27 L. Pavan, K. Rossi and F. Baletto, *J. Chem. Phys.*, 2015, **143**, 184304.
- 28 K. Rossi, L. Pavan, Y. Soon and F. Baletto, *Eur. Phys. J. B*, 2018, **91**, 33.
- 29 F. Baletto, *J. Phys.: Condens. Matter*, 2019, **31**, 113001.
- 30 C. Barreteau, M. C. Desjonquieres and D. Spanjaard, *Eur. Phys. J. D*, 2000, **11**, 395–402.
- 31 W. N. Lipscomb, *Science*, 1966, **153**, 373–378.
- 32 G. Rollmann, M. E. Gruner, A. Hucht, R. Meyer, P. Entel, M. L. Tiago and J. R. Chelikowsky, *Phys. Rev. Lett.*, 2007, **99**, 083402.
- 33 J. P. Perdew, K. Burke and M. Ernzerhof, *Phys. Rev. Lett.*, 1997, **78**, 1396.
- 34 S. Grimme, J. Antony, S. Ehrlich and H. Krieg, *J. Chem. Phys.*, 2010, **132**, 154104.
- 35 J. K. Nørskov and N. D. Lang, *Phys. Rev. B: Condens. Matter Mater. Phys.*, 1980, **21**, 2131–2136.
- 36 R. P. Gupta, *Phys. Rev. B: Condens. Matter Mater. Phys.*, 1981, **23**, 6265–6270.
- 37 F. Cleri and V. V. Rosato, *Phys. Rev. B: Condens. Matter Mater. Phys.*, 1993, **48**, 22–33.
- 38 J. Wellendorff, K. T. Lundgaard, A. Mogelhoff, V. Petzold, D. D. Landis, J. K. Nørskov, T. Bligaard and K. W. Jacobsen, *Phys. Rev. B: Condens. Matter Mater. Phys.*, 2012, **85**, 235149.
- 39 J. P. Perdew, A. Ruzsinszky, G. I. Csonka, O. A. Vydrov, G. E. Scuseria, L. A. Constantin, X. Zhou and K. Burke, *Phys. Rev. Lett.*, 2008, **100**, 136406.
- 40 S. Plimpton, *J. Comput. Phys.*, 1995, **117**, 1–19.
- 41 T. Bucko, S. Chibani, J. F. Paul, L. Cantrel and M. Badawi, *Phys. Chem. Chem. Phys.*, 2017, **19**, 27530–27543.



- 42 J. P. K. Doye and F. Calvo, *Phys. Rev. Lett.*, 2001, **86**, 3570–3573.
- 43 A. Šiber, *Phys. Rev. B: Condens. Matter Mater. Phys.*, 2004, **70**, 075407.
- 44 G. Henkelman and H. Jónsson, *J. Chem. Phys.*, 2000, **113**, 9978–9985.
- 45 C. Kittel, *Introduction to Solid State Physics*, Wiley, Hoboken, NJ, USA, 7th edn, 1996.
- 46 G. Kresse and J. Furthmuller, *Phys. Rev. B: Condens. Matter Mater. Phys.*, 1996, **54**, 11169–11186.
- 47 G. Kresse and D. Joubert, *Phys. Rev. B: Condens. Matter Mater. Phys.*, 1999, **59**, 1758–1775.
- 48 A. Hjorth Larsen, J. Jorgen Mortensen, J. Blomqvist, I. E. Castelli, R. Christensen, M. Dulak, J. Friis, M. N. Groves, B. Hammer, C. Hargus, E. D. Hermes, P. C. Jennings, P. Bjerre Jensen, J. Kermode, J. R. Kitchin, E. Leonhard Kolsbjerg, J. Kubal, K. Kaasbjerg, S. Lysgaard, J. Bergmann Maronsson, T. Maxson, T. Olsen, L. Pastewka, A. Peterson, C. Rostgaard, J. Schiøtz, O. Schütt, M. Strange, K. S. Thygesen, T. Vegge, L. Vilhelmsen, M. Walter, Z. Zeng and K. W. Jacobsen, *J. Phys.: Condens. Matter*, 2017, **29**, 273002.
- 49 P. N. Plessow, *J. Chem. Theory Comput.*, 2018, **14**, 981–990.
- 50 J. Kastner and W. Thiel, *J. Chem. Phys.*, 2005, **123**, 144104.

