

The strong effect of network resolution on electricity system models with high shares of wind and solar

Martha Maria Frysztacki^{a,*}, Jonas Hörsch^{a,b}, Veit Hagenmeyer^a, Tom Brown^{a,b}

^a Institute for Automation and Applied Informatics, Karlsruhe Institute of Technology, 76344 Eggenstein-Leopoldshafen, Germany

^b Frankfurt Institute for Advanced Studies, Ruth-Moufang-Straße 1, 60438 Frankfurt am Main, Germany

HIGHLIGHTS

- Highly-renewable European power system is optimized at high spatial resolution.
- High-resolution capacity placement for wind and solar reduces costs by up to 10%.
- Models with low network resolution ignore congestion, underestimating costs by 23%.
- Costs underestimated most when grid expansion limited by, e.g., public acceptance.
- Grid reinforcements relieve congestion and lower system costs by up to 16%.

ARTICLE INFO

Keywords:

Energy system modelling
Spatial scale clustering
Transmission grid modelling
Resource resolution

ABSTRACT

Energy system modellers typically choose a low spatial resolution for their models based on administrative boundaries such as countries, which eases data collection and reduces computation times. However, a low spatial resolution can lead to sub-optimal investment decisions for wind and solar generation. Ignoring power grid bottlenecks within regions tends to underestimate system costs, while combining locations with different wind and solar capacity factors in the same resource class tends to overestimate costs. We investigate these two competing effects in a capacity expansion model for Europe's power system with a high share of renewables, taking advantage of newly-available high-resolution datasets as well as computational advances. We vary the number of nodes, interpolating between a 37-node model based on country and synchronous zone boundaries, and a 1024-node model based on the location of electricity substations. If we focus on the effect of renewable resource resolution and ignore network restrictions, we find that a higher resolution allows the optimal solution to concentrate wind and solar capacity at sites with better capacity factors and thus reduces system costs by up to 10% compared to a low resolution model. This results in a big swing from offshore to onshore wind investment. However, if we introduce grid bottlenecks by raising the network resolution, costs increase by up to 23% as generation has to be sourced more locally at sites with worse capacity factors. These effects are most pronounced in scenarios where grid expansion is limited, for example, by low local acceptance. We show that allowing grid expansion mitigates some of the effects of the low grid resolution, and lowers overall costs by around 16%.

1. Introduction

Electricity systems with high shares of wind and solar photovoltaic generation require a fundamentally different kind of modelling to conventional power systems with only dispatchable generation [1]. While investments in conventional power plants can be dimensioned according to simple heuristics like screening curves [2], the assessment of wind and solar resources requires a high temporal and spatial resolution to

capture their weather-driven variability. The need to assess investments in generation, transmission and flexibility options over thousands of representative weather and demand situations, as well as over thousands of potential locations, means that balancing model accuracy against computational resources has become a critical challenge.

The effects of temporal resolution have been well researched in the electricity system planning literature [3], including the need for at least hourly modelling resolution [1], the consequences of clustering

* Corresponding author.

E-mail address: martha.frysztacki@kit.edu (M.M. Frysztacki).

<https://doi.org/10.1016/j.apenergy.2021.116726>

Received 22 October 2020; Received in revised form 18 February 2021; Accepted 20 February 2021

Available online 31 March 2021

0306-2619/© 2021 The Authors. Published by Elsevier Ltd. This is an open access article under the CC BY license (<http://creativecommons.org/licenses/by/4.0/>).

representative conditions [4], and the need to include extreme weather events [5]. On the spatial side, it has been recognized that integrating renewable resources on a continental scale can smooth large-scale weather variations, particularly from wind [6], and avoid the need for temporal balancing. This smoothing effect has been found in studies of the benefits of grid expansion both in Europe, where the impact on balancing needs [7] and storage requirements [8] has been analysed, and in the United States [9]. However, there has been little research on the effects of spatial resolutions on planning results. This is partly due to the fact that collecting high-resolution spatial data is challenging, as well as the fact that optimization at high-resolution over large areas is computationally demanding.

Choosing the spatial resolution based on administrative boundaries such as country borders –which is a common approach in the literature [6,7,10]– fails to account for the variation of resources inside large countries like Germany. Aggregating low-yield sites together with high-yield sites takes away the opportunity to optimize generation placement, which distorts investment decisions and drives up costs.

On the other hand, aggregating diverse resources to single points tends to underestimate network-related costs, since the models are blind to network bottlenecks that might hinder the welfare-enhancing integration of renewable resources located far from demand centers. The effects of network restrictions are all the more important given the apparent low public acceptance for new overhead transmission lines, observed in Germany [11] and across Europe [12], and the long planning and construction times for new grid infrastructure [13].

In the present contribution we introduce a novel methodology to disentangle these two competing spatial effects of resource and network resolution, so that for the first time their different impacts on system costs and technology choices can be quantified. We then demonstrate the methodology by running simulations in a model of the future European electricity system with a higher spatial resolution than has previously been achieved in the literature. We optimize investments and operation of generation, storage and transmission jointly in a system with a high share of renewables under a 95% reduction in CO₂ emissions compared to 1990, which is consistent with European targets for 2050 [14]. A recently-developed, high-resolution, open-source model of the European transmission network, PyPSA-Eur [15], is sequentially clustered from 1024 nodes down to 37 nodes in order to examine the effects on optimal investments in generation, transmission and storage.

Previous work in the engineering literature has focused on the effect of different network clustering algorithms [16] on the flows in single power flow simulations [17,18], or used clustering algorithms that are dependent on specific dispatch situations [19–21] and therefore unsuitable when making large changes to generation and transmission capacities. In the planning literature that considers a high share of renewables in the future energy system, the effects of clustering applied separately to wind, solar and demand were investigated in [22], but neglected potential transmission line congestion within large regions. In [23] the previous study was extended by including a synthesized grid and renewable profiles, but it ignored the existing topology of the transmission grid. Effects of varying the resolution were not considered in either of the studies. Recent work has examined regional solutions for the European power system, but did not take into account existing transmission lines, potential low public acceptance for grid reinforcement or the grid flow physics [24]. Other studies have examined transmission grid expansion at substation resolution, but either the temporal resolution was too low to account for wind and solar variability [25,26], or only single countries were considered [27,28,26], or transmission expansion was not co-optimized with generation and storage [25,29,30]. The competing effect of clustering transmission lines versus variable resource sites on the share of renewables was also discussed in [31], but the report did not provide an analysis of how strongly the respective clustering impacts modeling and planning results. The effects of model resolution on system planning results were considered for the United States in [32], where a cost-benefit was seen for higher

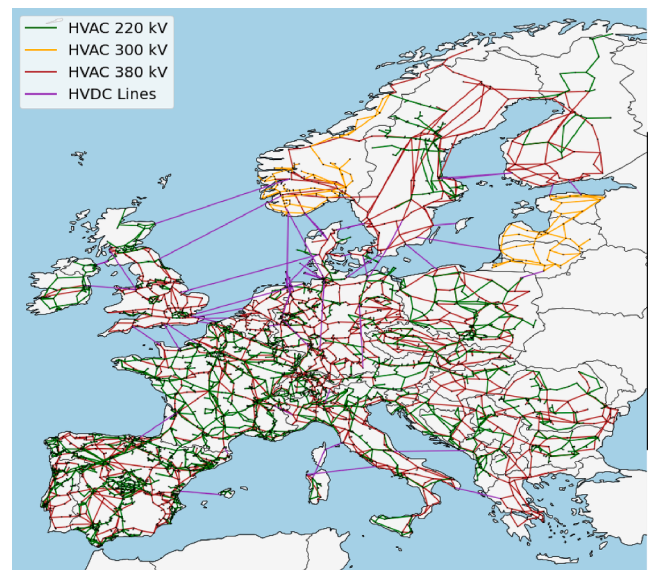


Fig. 1. PyPSA-Eur model of the European electricity system, including all existing and planned high-voltage alternating current (HVAC) and direct current (HVDC) lines.

wind and solar resolution, but the resource resolution was not separated from the network resolution, and only a small number of time slices were considered to represent weather variations.

Advances in solver algorithms and code optimization in the modeling framework PyPSA [33], as well as hardware improvements, allow us to achieve what was previously not possible in the literature: the co-optimization of transmission, generation and storage at high temporal and spatial resolution across the whole of Europe, while taking into account linearized grid physics, existing transmission lines and realistic restrictions on grid reinforcement. In previous work by some of the authors large effects of spatial resolution on investment results were seen [34], but because the resource and network resolution were changed in tandem, it was not possible to analyse which effect dominates the results. In the present contribution we present a novel study design that separates the effects of resource and network resolution, and demonstrate the substantial differences between the two effects using the high-resolution simulations enabled by recent software and hardware advances.

2. Methods

In this section we present an overview of the underlying model and the study design, before providing more details on the clustering methodology and the investment optimisation. A list of notation is provided in Table 2.

2.1. Model input data

The study is performed in a model of the European electricity system at the transmission level, PyPSA-Eur, which is fully described in a separate publication [15]. Here we give a brief outline of the input data.

The PyPSA-Eur model shown in Fig. 1 contains all existing high-voltage alternating current (HVAC) and direct current (HVDC) lines in the European system, as well as those planned by the European Network of Transmission System Operators for Electricity (ENTSO-E) in the Ten Year Network Development Plan (TYNDP) [13]. The network topology and electrical parameters are derived from the ENTSO-E interactive map [35] using a power grid extraction toolkit [36]. In total the network consists of 4973 nodes, 5721 HVAC and 32 HVDC lines existing as of 2018, as well as 279 HVAC and 29 HVDC planned lines.

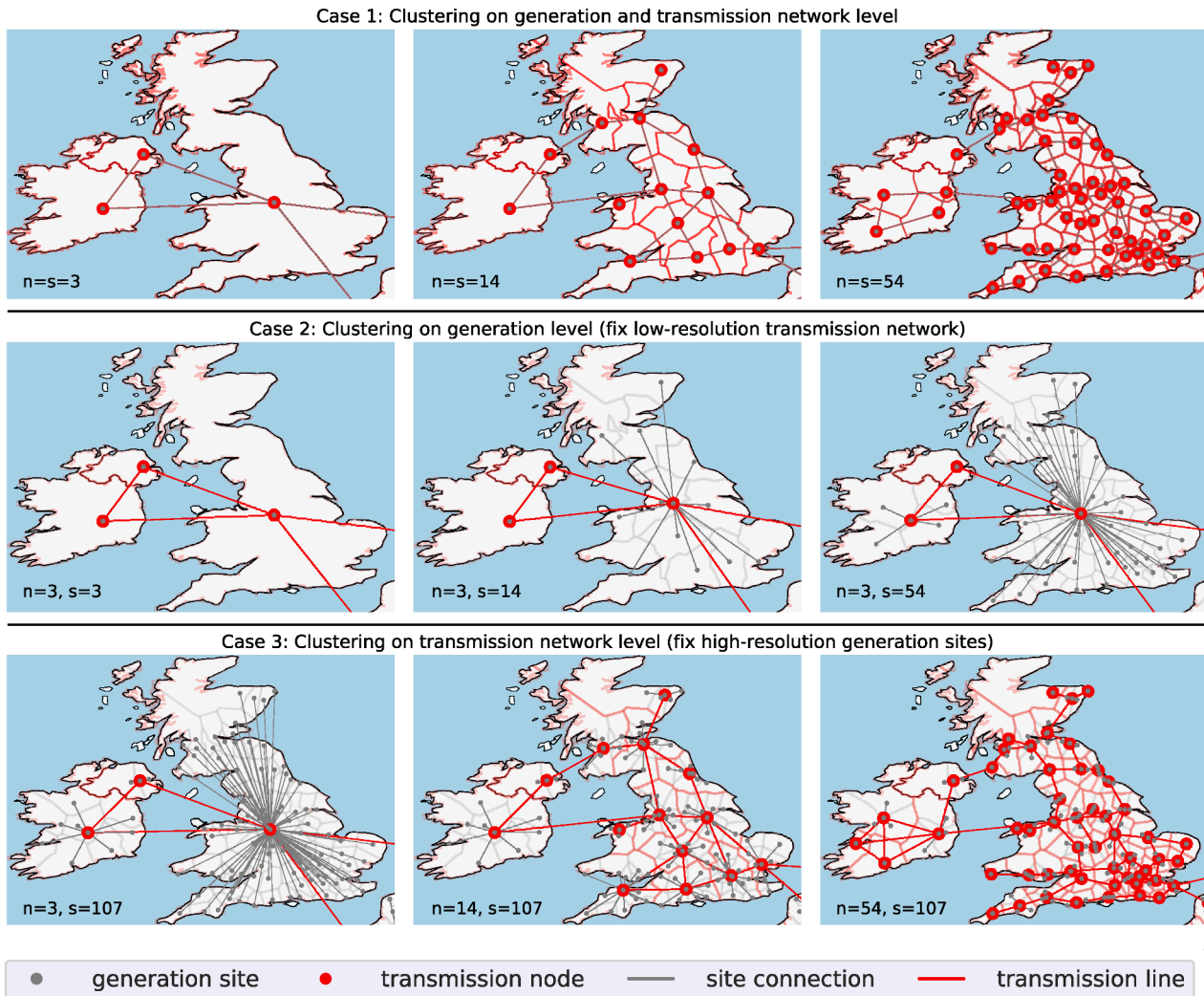


Fig. 2. Clustering of network nodes (red, number n) and renewable sites (grey, number s) in each of the cases (rows) for Ireland and the United Kingdom at different levels of clustering (columns).

Historical hourly load data for each country are taken from the Open Power System Data project [37] and distributed to the nodes within each country according to population and gross domestic product data. Generation time series are provided for the surrounding wind and solar plants based on historical wind and insolation data derived from the ERA5 reanalysis dataset [38] and the SARA2 surface radiation dataset [39]. Renewable installation potentials are based on land cover maps, excluding for example nature reserves, cities or streets.

The model was partially validated in [15]. Further validation against historical data was carried out in [40], where it was shown that the

Table 1

Case descriptions. ($\mathcal{B} = \{37\} \cup \{\sqrt{2^i}\}_{i=11, \dots, 20} = \{37, 45, 64, 90, 128, \dots, 1024\}$).

Case	Short name	Description
1	Simultaneous clustering	Successive increase in number of generation sites and transmission nodes $n : s = n \in \mathcal{B}$
2	Clustering on siting resolution	Fix the transmission network to one-node-per-country-zone $n = 37$ and increase the number of generation and storage sites $s \in \mathcal{B}$
3	Clustering on network nodes	Maintain a high resolution of generation sites $s = 1024$ and successively increase the number of transmission nodes $n \in \mathcal{B}$

model could reproduce curtailment of wind and solar in Germany due to transmission bottlenecks in the years 2013–2018. The ability to reproduce historical congestion provides a strong check on the match between the transmission network data and the availability of wind and solar generation in the model.

2.2. Clustering study design

The nodes of the model are successively clustered in space into a smaller number of representative nodes using the k -means algorithm [41]. This groups close-by nodes together, so that, for example, multiple nodes representing a single city are merged into one node. Nodes from different countries or different synchronous zones are not allowed to be merged; to achieve this, the overall number of desired nodes is partitioned between the countries and synchronous zones before the k -means algorithm is applied in each partition separately. In total there are 37 ‘country-zones’ in the model, i.e. regions of countries belonging to separate synchronous zones.

Fig. 2, Case 1 shows the results for Ireland and the United Kingdom (where Northern Ireland is in a separate synchronous zone to Great Britain). Once the nodes have been clustered, they are reconnected with transmission corridors representing the major transmission lines from the high-resolution model. Electricity demand, conventional generation and storage options are also aggregated to the nearest network node.

Table 2
Notation.

Symbol	Meaning
	general abbreviations
s	technology type
t	time point
i, j	nodes in high resolution network
c, d	clustered nodes
ℓ_{ij}	high resolution line connecting nodes i and j
$\ell_{c,d}$	aggregated representative line connecting clusters c and d
N_c	set of high resolution nodes in cluster c
$N_{c,d}$	set of high resolution lines between clusters c and d
RE	set of renewable generator technologies
CG	set of conventional generator and storage technologies
	line attributes
x_{ij}	reactance of line ℓ_{ij}
v_{ij}	voltage of line ℓ_{ij}
c_{ij}	capital costs for line ℓ_{ij}
l_{ij}	length of line ℓ_{ij}
F_{ij}	capacity of line ℓ_{ij}
$f_{ij,t}$	flow of line ℓ_{ij} at time t
$C_{\text{marine/ground}}$	capital costs for a submarine/ underground connection
	nodal and technology attributes
x_i	coordinates of node i in \mathbb{R}^2
w_i	nodal weighting
e_s	CO ₂ emissions of technology s
$w_{i,s}$	nodal technology weighting
$C_{i,s}$	annualised fixed costs
$G_{i,s}$	(optimal) capacity of technology s at node i
$G_{i,s}^{\max}$	maximal installable capacity of technology s at node i
$o_{i,s}$	variable costs of technology s at node i
$E_{i,s}$	storage energy efficiency
$\eta_{i,s}$	storage losses or efficiencies at node i for technology s
w_t	time weighting
$d_{i,t}$	demand per node i and time t
$\bar{g}_{i,s,t}$	capacity factor for RE $\in [0, 1]$
$g_{i,s,t}$	dispatch in node i of technology s at time t
$e_{i,s,t}$	energy level of technology s in node i at time t
	graph related attributes
$K_{i,\ell}$	incidence matrix
$C_{\ell,c}$	Cycle matrix, here, c represents a cycle

Table 3
Technology investment costs with 1\$ = 0.7532€.

Asset	Cost	Unit
onshore wind	1110	€/kW
offshore wind (AC/DC grid connection separate)	1640	€/kW
solar PV utility	425	€/kW
solar PV rooftop	725	€/kW
open cycle gas turbine	400	€/kW
run of river	3000	€/kW
pumped hydro storage	2000	€/kW
hydro storage	2000	€/kW
battery storage	192	\$/kWh
battery power conversion	411	\$/kW _{el}
hydrogen storage	11.3	\$/kWh
hydrogen power conversion	689	€/kW _{el}
HVAC overhead transmission	400	€/ (MWkm)
HVAC underground transmission	1342	€/ (MWkm)
HVAC subsea transmission	2685	€/ (MWkm)
HVDC underground transmission	1000	€/ (MWkm)
HVDC subsea transmission	2000	€/ (MWkm)

Table 4

average standard deviation of the capacity factor (per unit) per region for a network resolution of 1024, 256 and 37 sites.

n clusters	Solar	Wind onshore	Wind offshore
1024	$1.9 \cdot 10^{-3}$	$2.2 \cdot 10^{-2}$	$4.3 \cdot 10^{-2}$
724	$2.3 \cdot 10^{-3}$	$2.5 \cdot 10^{-2}$	$4.5 \cdot 10^{-2}$
512	$2.7 \cdot 10^{-3}$	$2.8 \cdot 10^{-2}$	$4.9 \cdot 10^{-2}$
362	$3.2 \cdot 10^{-3}$	$3.3 \cdot 10^{-2}$	$5.1 \cdot 10^{-2}$
256	$3.7 \cdot 10^{-3}$	$3.6 \cdot 10^{-2}$	$5.3 \cdot 10^{-2}$
181	$4.2 \cdot 10^{-3}$	$3.9 \cdot 10^{-2}$	$5.7 \cdot 10^{-2}$
128	$4.5 \cdot 10^{-3}$	$4.3 \cdot 10^{-2}$	$5.8 \cdot 10^{-2}$
90	$5.0 \cdot 10^{-3}$	$4.6 \cdot 10^{-2}$	$5.9 \cdot 10^{-2}$
64	$6.1 \cdot 10^{-3}$	$4.9 \cdot 10^{-2}$	$6.2 \cdot 10^{-2}$
45	$6.1 \cdot 10^{-3}$	$4.9 \cdot 10^{-2}$	$6.2 \cdot 10^{-2}$
37	$6.2 \cdot 10^{-3}$	$4.9 \cdot 10^{-2}$	$6.2 \cdot 10^{-2}$

More technical details on the clustering can be found in Section 2.5. An analysis of the effects of clustering on the network flows can be found in the Appendix, Section A.1.

2.3. Resource versus network resolution case studies

To separate the effects of the spatial resolution on the renewable resources and the network, we consider three cases in which they are clustered differently. The three cases are summarized in Table 1 and shown graphically in Fig. 2 for each case (rows) and for each level of clustering (columns).

In **Case 1** the wind and solar sites are clustered to the same resolution as the network. The number of clusters is varied between 37, the number of country-zones, and 1024, which represents the maximum resolution for which generation, transmission and storage investment can be co-optimized in reasonable time. The number of nodes is increased in half-powers of 2, so that nine different resolutions are considered: $\mathcal{R} = \{37\} \cup \{\lfloor \sqrt{2^i} \rfloor\}_{i=11, \dots, 20}$.

In **Case 2** network bottlenecks inside each country-zone are removed so that there are only 37 transmission nodes, and only the resolution of the wind and solar generation is varied. Inside each country-zone, all wind and solar generators are connected to the central node. This allows the optimization to exploit the best wind and solar sites available.

Finally in **Case 3** we fix a high resolution of renewable sites and vary the number of network nodes, in order to explore the effects of network bottlenecks. Each renewable site is connected to the nearest network node, where the transmission lines, electricity demand, conventional generators and storage are also connected.

For each case we optimize investments and operation for wind and solar power, as well as open cycle gas turbines, batteries, hydrogen storage and transmission. Flexibility from existing hydroelectric power plants is also taken into account. The model is run with perfect foresight at a 3-hourly temporal resolution over a historical year of load and weather data from 2013, assuming a 95% reduction in CO₂ emissions compared to 1990. The temporal resolution is 3-hourly to capture changes in solar generation and electricity demand while allowing reasonable computation times. The technology selection is also limited for computational reasons. More details on the investment optimization can be found in Section 2.6.

For each simulation we also vary the amount of new transmission that can be built, in order to understand the effect of possible grid reinforcements on the results. The model is allowed to optimize new transmission reinforcements to the grid as it was in 2018, up to a limit on the sum over new capacity multiplied by line length measured relative to the grid capacity in 2018. For example, a transmission expansion of 25% means that on top of 2018's grid, new lines corresponding to a quarter of 2018's grid can be added to the network. The exact constraint is given in

Table 5
Aggregation rules for attributes of nodes and attached assets.

Attribute	Aggregated attribute	Mapping	Values or units
latitude & longitude	x_c	$\frac{1}{ N_c } \sum_{i \in N_c} x_i$	\mathbb{R}^2
(optimal) power capacity	$G_{c,s}$	$\sum_{i \in N_c} G_{i,s}$	MW
asset installable potential	$G_{c,s}^{\max}$	$\sum_{i \in N_c} G_{i,s}^{\max}$	MW

Table 6
Aggregation rules for attributes of lines in series.

Attribute	Aggregated attribute	Mapping	Values or units
length (HVDC lines)	$l_{c,d}$	$\min_{\ell_{ij} \in N_{c,d}} l_{ij}$	km
power capacity	$F_{c,d}$	$\sum_{\ell_{ij} \in N_{c,d}} F_{ij}$	MVA
fraction of length underwater	$u_{c,d}$	$\frac{1}{l_{c,d}} \sum_{\ell_{ij} \in N_{c,d}} l_{ij} \cdot u_{ij}$	per unit

Table 7
Aggregation rules for attributes of lines in parallel.

Attribute	Aggregated attribute	Mapping	Values or units
power capacity	$s_{c,d}^{\text{nom}}$	$\sum_{\ell_{ij} \in N_{c,d}} s_{ij}^{\text{nom}}$	MVA
power capacity maximum	$s_{c,d}^{\text{min}}$	$\sum_{\ell_{ij} \in N_{c,d}} s_{ij}^{\text{min}}$	MVA
power capacity minimum	$s_{c,d}^{\text{max}}$	$\sum_{\ell_{ij} \in N_{c,d}} s_{ij}^{\text{max}}$	MVA
number of parallel lines	$n_{c,d}^{\text{parallel}}$	$\sum_{\ell_{ij} \in N_{c,d}} n_{ij}^{\text{parallel}}$	\mathbb{R}
terrain factor for capital costs	$\text{terr}_{c,d}$	$\frac{1}{ N_{c,d} } \sum_{\ell_{ij} \in N_{c,d}} \text{terr}_{ij}$	per unit

Eq. (17) in Section 2.6.

2.4. Network preparation

Before the clustering algorithm can be applied to the network, several simplifications are applied to the data.

In order to avoid the difficulty of keeping track of different voltage levels as the network is clustered, all lines are mapped to their electrical equivalents at 380 kV, the most prevalent voltage in the European transmission system. If the original reactance of the line ℓ_{ij} was x_{ij} at its original voltage v_{ij} , the new equivalent reactance becomes

$$x'_{ij} = x_{ij} \left(\frac{380 \text{ kV}}{v_{ij}} \right)^2. \quad (1)$$

This guarantees that the per unit reactance is preserved after the equivalencing.

The impedances and thermal ratings of all transformers are neglected, since they are small and cannot be consistently included with the mapping of all voltage levels to 380 kV.

Univalent nodes, also known as dead-ends, are removed sequentially until no univalent nodes exist. That is, if node i has no other neighbor than node j , then node i is merged to node j . We repeat the process until each node is multi-valent and update the merged node attributes and its attached assets (loads, generators and storage units) according to the rules in Table 5.

HVDC lines in series or parallel are simplified to a single line ℓ using the rules in Tables 6 and 7. Capital costs per MW of capacity for HVDC lines ℓ_{ij} with length l_{ij} and a fraction $u_{ij} \in [0, 1]$ underwater are given by

$$c_{i,j} = 1.25 \cdot l_{ij} \cdot (u_{ij} \cdot c_{\text{marine}} + (1 - u_{ij}) \cdot c_{\text{ground}}),$$

where c_{marine} is the capital cost for a submarine connection and c_{ground} for

an underground connection. The factor of 1.25 accounts for indirect routing and height fluctuations.

2.5. Clustering methodology

Different methods have been used to cluster networks in the literature. We chose a version of k -means clustering [41] based on the geographical location of the original substations in the network, weighted by the average load and conventional capacity at the substations, since this represents how the topology of the network was historically planned to connect major generators to major loads. It leaves the long transmission lines between regions, which are expensive to upgrade and are more likely to encounter low local acceptance, unaggregated, so that these lines can be optimized in the model. Regions with a high density of nodes, for example around cities, are aggregated together, since the short lines between these nodes are inexpensive to upgrade and rarely present bottlenecks. Geographical k -means clustering has the advantage over other clustering methods of not making any assumptions about the future generation, storage and network capacity expansion.

Other clustering methods applied in the literature are not suitable for the co-optimization of supply and grid technologies: these include clustering based on electrical distance using k -medoids [17,42], a modified version of k -medoids to avoid assigning both end nodes of a critical branch to the same zone [43], hierarchical clustering [44], or k -decomposition and eigenvector partitioning [45] (which we do not use because we want to optimize new grid reinforcements that alter electrical distances), spectral partitioning of the graph Laplacian matrix [18] (avoided for same reason), an adaptation of k -means called k -means++ combined with a max- p regions algorithm applied to aggregate contiguous sites with similar wind, solar and electricity demand [22] (avoided since we want a coherent clustering of all network nodes and assets), hierarchical clustering based on a database of electricity demand, conventional generation and renewable profiles including a synthesized grid [23] (avoided for the same reason and because we do not want to alter the topology of the existing transmission grid), k -means clustering based on renewable resources as well as economic, sociodemographic and geographical features [46] (avoided because we need a clustering focused on network reduction), as well as clustering based on zonal Power Transfer Distribution Factors (PTDFs) to detect congestion zones [19], to yield the same flow patterns as the original network [47] or to analyse policy options and emissions [48] (avoided because they encode electrical parameters that change with reinforcement), Available Transfer Capacities (ATCs) [21] (avoided because they depend on pre-defined dispatch patterns) and locational marginal prices (LMP) [20] (again avoided because they depend on pre-defined dispatch patterns).

We do not allow nodes in different countries or different synchronous zones to be clustered together, so that we can still obtain country-specific results and so that all HVDC between synchronous zones are preserved during the aggregation. This results in a minimum number of 37 clustered nodes for the country-zones. First we partition the desired total number n of clusters between the 37 country-zones, then we apply the k -means clustering algorithm within each country-zone.

In order to partition the n nodes between the 37 country-zones, the following minimisation problem is solved

$$\text{argmin}_{\{n_z\} \in \mathbb{N}^{37}} \sum_{z=1}^{37} \left(n_z - \frac{L_z}{\sum_y L_y} n \right)^2, \quad (2)$$

where L_z is the total load in each country-zone z . An additional constraint ensures that the number of clusters per country-zone matches the desired number of clusters for the whole network: $\sum_z n_z = n$.

Then the k -means algorithm is applied to partition the nodes inside each country-zone into n_z clusters. The algorithm finds the partition that minimizes the sum of squared distances from the mean position of each

cluster $x_c \in \mathbb{R}^2$ to the positions $x_i \in \mathbb{R}^2$ of its members $i \in N_c$

$$\min_{\{x_c \in \mathbb{R}^2\}} \sum_{c=1}^k \sum_{i \in N_c} w_i \cdot \|x_c - x_i\|_2. \quad (3)$$

Each node is additionally assigned a normalised weighting w_i based on its nominal power for conventional generators and averaged load demand:

$$w_i = \frac{\sum_{s_{\text{conv.}}} G_{i,s}}{\sum_{s_{\text{conv.}}} \sum_{i=1}^B G_{i,s}} + \frac{d_{i,T}}{\sum_{i=1}^B d_{i,T}}, \quad \forall i \quad (4)$$

where $d_{i,T}$ corresponds to the averaged demand over the considered time period T . w_i is normalised according to $\left[\frac{100 \cdot w_i}{\|w\|_{\text{max}}} \right]$.

The optimization is run with $n_{\text{init}} = 10^3$ different centroid seeds, a maximum number of iterations for a single run of $\text{max}_{\text{iter}} = 3 \cdot 10^4$ and a relative tolerance with regards to inertia to declare convergence of $\varepsilon = 10^{-6}$.

Attributes of the nodes in N_c and their attached assets are aggregated to the clustered node c according to the rules in Table 5.

Lines connecting nodes N_c in cluster c with nodes N_d in cluster c , given by the set $N_{c,d}$

$$N_{c,d} = \{\ell_{ij}, i \in N_c, j \in N_d\}, \quad \forall c, d \quad (5)$$

are aggregated to a single representative line. The length of the representative line is determined using the haversine formula (which computes the great-circle distance between two points on a sphere) multiplied by a factor of 1.25 to take indirect routing into account. The representative line inherits the attributes of the lines $N_{c,d}$ as described in Table 7. If any of the replaced lines in $N_{c,d}$ had the attribute that their capacity was extendable, then the aggregated line inherits this extendability.

An analysis of the effects of clustering on the network flows can be found in the Appendix, Section A.1.

For Case 1, generators are clustered to the same resolution as the network. Times series containing hourly resolved capacity factors $\bar{g}_{i,s,t} \in [0, 1]$ for variable renewable generation are aggregated using a weighted average

$$\bar{g}_{c,s,t} = \frac{1}{\sum_{i \in N_c} w_{i,s}} \sum_{i \in N_c} w_{i,s} \cdot \bar{g}_{i,s,t}, \quad \forall c, s, t \quad (6)$$

The resulting capacity factor $\bar{g}_{c,s,t}$ is in $[0, 1]$ by definition. For renewables, the weighting $w_{i,s}$ is proportional to the maximal yearly yield for technology s at node i , found by multiplying the maximal installable capacity $G_{i,s}^{\text{max}}$ with the average capacity factor. In the case of conventional technologies the weightings are distributed equally, i.e. $w_{i,s} = 1$. Note that there is no relation between the weightings $w_{i,s}$ and the bus weightings w_i of (4).

For Case 2, the network is fixed at 37 nodes, and the wind and solar generators are merged in the aggregation step. Time series for VRE availability are aggregated according to (6) to their respective resolution.

For Case 3, the network is clustered, but wind and solar generators are not merged in the aggregation step. Their time series remain fixed at high resolution of 1024 nodes.

2.6. Investment optimisation

Investments in generation, storage and transmission are optimized in the PyPSA modelling framework [33], which minimises the total system costs. The objective function is

$$\min_{\substack{G_{i,s}, F_{\ell}, \\ g_{i,s,t}, \ell_{\ell}}} \left[\sum_{i=1}^B \sum_{s=1}^S \left(c_{i,s} G_{i,s} + \sum_{t=1}^T w_t O_{i,s} g_{i,s,t} \right) + \sum_{\ell=1}^L c_{\ell} F_{\ell} \right],$$

consisting of the annualised fixed costs $c_{i,s}$ for capacities $G_{i,s}$ at each node i and storage/generation technology s , the dispatch $g_{i,s,t}$ of the unit at time t and associated variable costs $o_{i,s}$ multiplied by a weight factor w_t corresponding to the temporal resolution of the system, and the line capacities F_{ℓ} for each line ℓ including both high voltage alternating current and direct current lines and their annualised fixed costs c_{ℓ} . The time period T runs over a full year at a 3-hourly resolution, so each time period t is weighted with $w_t = 3$.

Investment cost assumptions are provided in Table 3, based on projections for the year 2030. Assumptions are based on [49] for wind technologies, [50] in case of OCGT, PHS, hydro, run-of-river, [51] for storage technologies and [52] for solar technologies. 2030 is chosen for the cost projections since this is the earliest possible time that such a system transformation might be feasible, and because it results in conservative cost assumptions compared to projections for a later date. The only CO₂-emitting generators are the open cycle gas turbines with natural gas with specific emissions 0.187 tCO₂/MWh_{th} and fuel cost 21.6 €/MWh_{th}. Investment costs are annualised with a discount rate of 7%. Lifetimes, efficiencies and operation and maintenance costs can be found in the GitHub repository [53].

The dispatch of conventional generators $g_{i,s,t}$ is constrained by their capacity $G_{i,s}$

$$0 \leq g_{i,s,t} \leq G_{i,s} \quad \forall i, t, s \in CG \quad (7)$$

The maximum producible power of renewable generators depends on the weather conditions, which is expressed as an availability $\bar{g}_{i,s,t}$ per unit of its capacity:

$$0 \leq g_{i,s,t} \leq \bar{g}_{i,s,t} G_{i,s} \quad \forall i, t, s \in RE \quad (8)$$

The installable renewable capacity $G_{i,s}$ is constrained by land eligibility for placing e.g. wind turbines or solar panels in each node and for each renewable technology. The land restrictions are derived using the Geospatial Land Availability for Energy Systems (GLAES) tool [54] and are always finite for renewable carriers:

$$G_{i,s} \leq G_{i,s}^{\text{max}} < \infty \quad \forall i, s \in RE \quad (9)$$

There is no capacity constraint for conventional generators:

$$G_{i,s} < \infty \quad \forall i, s \in CG \quad (10)$$

The energy levels $e_{i,s,t}$ of all storage units have to be consistent between all hours and are limited by the storage energy capacity $E_{i,s}$

$$\begin{aligned} e_{i,s,t} = & \eta_0^w e_{i,s,t-1} + \eta_1 w_t [g_{i,s,t}]^- - \eta_2^{-1} w_t [g_{i,s,t}]^+ \\ & + w_t g_{i,s,t}^{\text{inflow}} - w_t g_{i,s,t}^{\text{spillage}} \\ & 0 \leq e_{i,s,t} \leq E_{i,s} \quad \forall i, s, t \end{aligned} \quad (11)$$

Positive and negative parts of a value are denoted as $[\cdot]^+ = \max(\cdot, 0)$, $[\cdot]^- = -\min(\cdot, 0)$. The storage units can have a standing loss η_0 , a charging efficiency η_1 , a discharging efficiency η_2 , inflow (e.g. river inflow in a reservoir) and spillage. The energy level is assumed to be

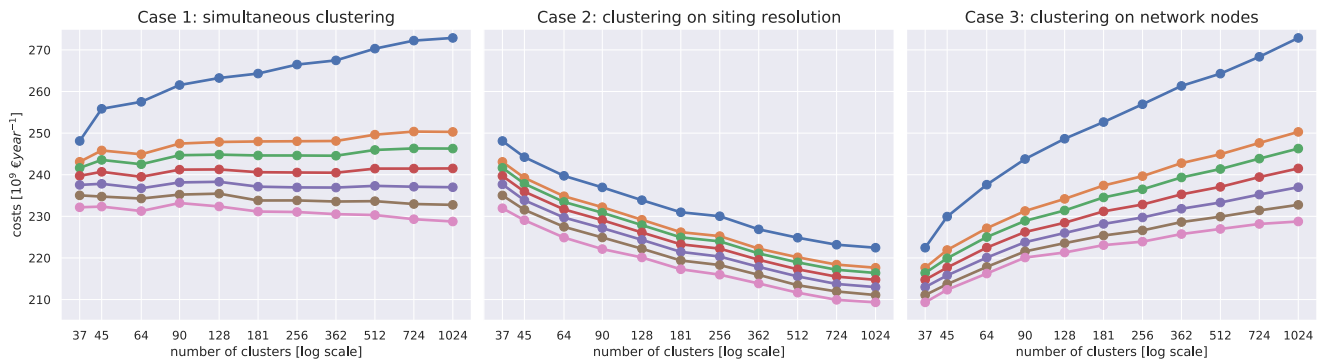


Fig. 3. Total annual system costs as a function of the number of clusters for Cases 1, 2 and 3.

cyclic, i.e. $e_{i,s,t=0} = e_{i,s,t=T}$.

CO₂ emissions are limited by a cap CAP_{CO_2} , implemented using the specific emissions e_s in CO₂-tonne-per-MWh of the fuel s and the efficiency $\eta_{i,s}$ of the generator:

$$\sum_{i,s,t} \frac{1}{\eta_{i,s}} w_i \cdot g_{i,s,t} \cdot e_s \leq CAP_{CO_2} \leftrightarrow \mu_{CO_2} \quad (12)$$

In all simulations this cap was set at a reduction of 95% of the electricity sector emissions from 1990.

The (perfectly inelastic) electricity demand $d_{i,t}$ at each node i must be met at each time t by either local generators and storage or by the flow $f_{\ell,t}$ from a transmission line ℓ

$$\sum_s g_{i,s,t} - d_{i,t} = \sum_{\ell} K_{i,\ell} f_{\ell,t} \quad \forall i,t \quad (13)$$

where $K_{i,\ell}$ is the incidence matrix of the network. This equation is Kirchhoff's Current Law (KCL) expressed in terms of the active power.

In the present paper the linear load flow is used, which has been shown to be a good approximation for a well-compensated transmission network [55], including for simulations using a large-scale European transmission model [29]. To guarantee the physicality of the network flows, in addition to KCL, Kirchhoff's Voltage Law (KVL) must be enforced in each connected network. KVL states that the voltage differences around any closed cycle in the network must sum to zero. If each independent cycle c is expressed as a directed combination of lines ℓ by a matrix $C_{\ell,c}$ then KVL becomes the constraint

$$\sum_{\ell} C_{\ell,c} x_{\ell} f_{\ell,t} = 0 \quad \forall c,t \quad (14)$$

where x_{ℓ} is the series inductive reactance of line ℓ . It was found in [56] that expressing the linear load flow equations in this way with cycle constraints is computationally more efficient than angle- or PTDF-based

formulations. Note that point-to-point HVDC lines have no cycles, so there is no constraint on their flow beyond KCL.

The flows are also constrained by the line capacities F_{ℓ}

$$|f_{\ell,t}| \leq b_B \cdot F_{\ell} \quad \forall \ell,t \quad (15)$$

Although the capacities F_{ℓ} are subject to optimisation, no new grid topologies are considered beyond those planned in the TYNDP 2018 [13]. The factor $b_B = 0.7$ leaves a buffer of 30% of the line capacities to account for $n - 1$ line outages and reactive power flows. The choice of 70% for b_B is standard in the grid modelling literature [57–59,29] and is also the target fraction of cross-border capacity that should be available for cross-border trading in the European Union (EU) by 2025, as set in the 2019 EU Electricity Market Regulation [60].

Since line capacities F_{ℓ} can be continuously expanded to represent the addition of new circuits, the impedances x_{ℓ} of the lines would also decrease. In principle this would introduce a bilinear coupling in Eq. (14) between the x_{ℓ} and the $f_{\ell,t}$. To keep the optimisation problem linear and therefore computationally fast, x_{ℓ} is left fixed in each optimisation problem, updated and then the optimisation problem is run, in up to 4 iterations to ensure convergence, following the methodology of [61,62].

In order to investigate the effects of transmission expansion, each line capacity F_{ℓ} can be extended beyond the capacity in 2018, $F_{\ell} \geq F_{\ell}^{2018}$, up to a line volume cap CAP_{trans} , which is then varied in different simulations:

$$\sum_{\ell} l_{\ell} \cdot (F_{\ell} - F_{\ell}^{2018}) \leq CAP_{trans} \leftrightarrow \mu_{trans} \quad (16)$$

The caps are defined in relation to 2018's line capacities F_{ℓ}^{2018} , i.e.

$$CAP_{trans} = x \cdot \sum_{\ell} l_{\ell} \cdot F_{\ell}^{2018} \quad (17)$$

where x is varied between zero and 50%.

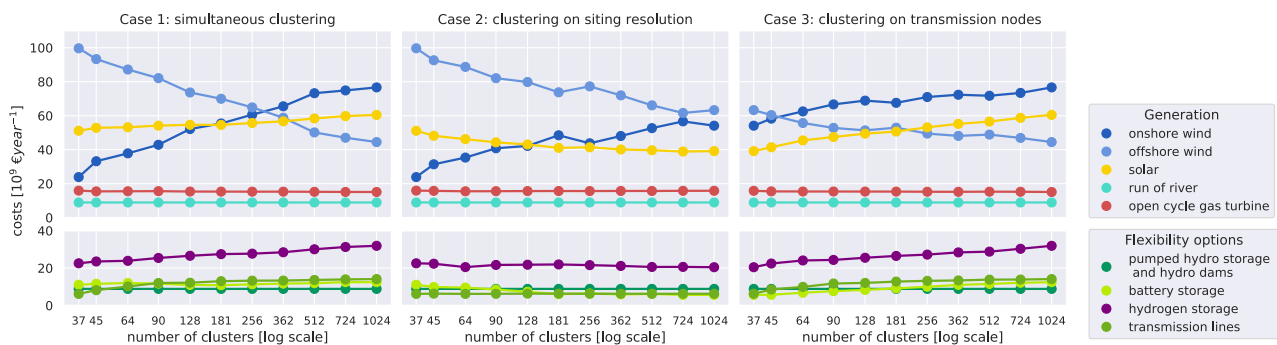


Fig. 4. Breakdown of the annual system costs for generation (top) and flexibility options (bottom) as a function of the number of clusters for Cases 1, 2 and 3 when there is no grid expansion.

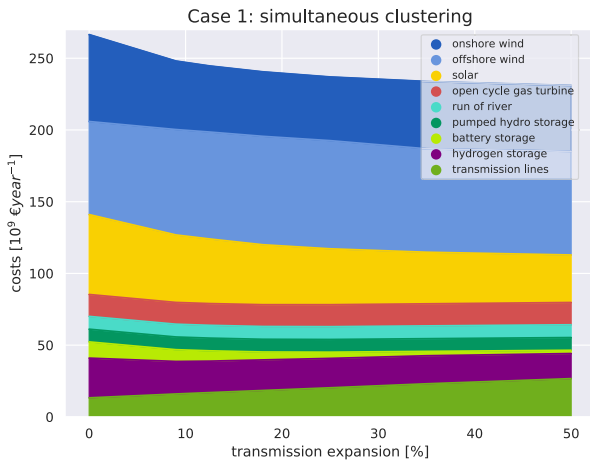


Fig. 5. Costs as a function of the transmission expansion level for 256 nodes in Case 1.

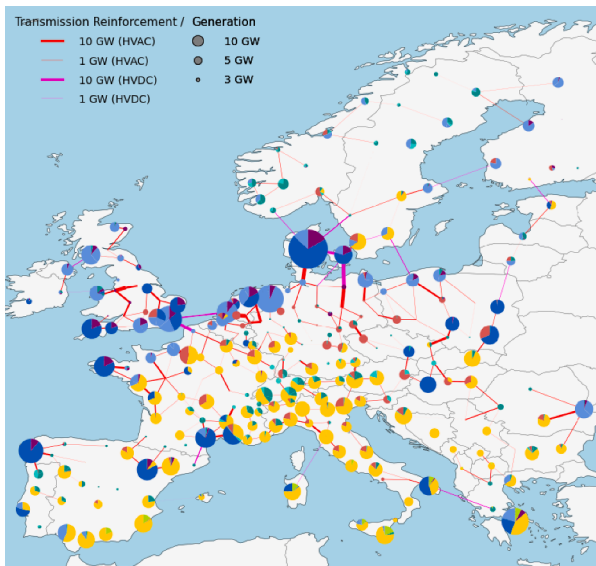


Fig. 6. Example of investments with 25% grid expansion and 256 nodes in Case 1.

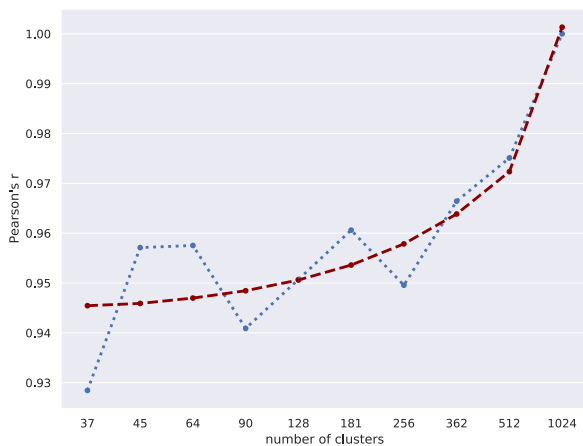


Fig. 7. Pearson's correlation coefficient of mapped flows (blue). Note that the x-axis is non-linear, therefore we mark a linear fit to the data (red).

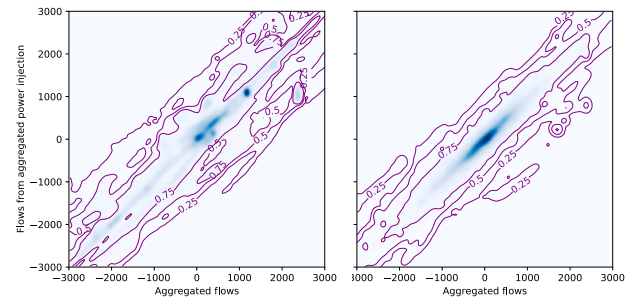


Fig. 8. Kernel Density Estimation (KDE) of aggregated flows from a high resolution network grid with 1024 nodes on the x-axis and a low resolution grid with 45 nodes (left) and 362 nodes (right) on the y-axis. 0.25, 0.5 and 0.75 quantiles of the distribution are displayed as purple isolines around the KDE.

Since there is a cap on the transmission expansion, the line costs c_ℓ can be set to zero. For the results, costs are added after the simulation based on the assumptions in Table 3.

2.7. Model output data

The optimised model returns the spatially-resolved capacity for each technology $G_{i,s}$ as well as the amount of transmission expansion of each included line F_ℓ . Additionally, the results also provide dispatch time series for each of the generators $g_{i,s,t}$ and electricity flows $f_{\ell,t}$ for included lines that obey the constraints described above in Section 2.6.

3. Results

Fig. 3 presents the total annual system costs for each case. To obtain a better understanding of the system composition, Fig. 4 breaks down the total costs into individual components when there is no grid expansion. In Fig. 5 we present total system costs for different grid expansion scenarios for 256 clusters in the simultaneous case (Case 1). An example map of investments can be found in Fig. 6 for a 25% grid expansion (a similar level to ENTSO-E's TYNDP [13]).

3.1. Case 1 - Increasing number of both generation sites and transmission nodes

If the resource and network resolutions increase in tandem according to Case 1 without grid expansion, the total annual system costs in Fig. 3 rise gently with the increasing number of nodes, reaching a maximum of 273 billion euros per year at 1024 nodes, which is 10% more expensive than the solution with 37 nodes. This corresponds to an average system cost of 87 €/MWh. If some transmission expansion is allowed, costs are lower, and there is almost no change in total system costs as the number of nodes is varied.

However, the fact that costs are flat does not mean that the solutions are similar: a large shift from offshore wind at low resolution to onshore wind at high resolution can be observed in the left graph of Fig. 4 (Case 1). This is an indication that spatial resolution can have a very strong effect on energy modelling results. To understand what causes this effect, we must examine Cases 2 and 3.

3.2. Case 2 - Importance of wind and solar resource granularity

In Case 2 we use the lowest network resolution of 37 nodes, corresponding to one-node-per-country-zone, and investigate the effect of changing the number of wind and solar sites on the results. As the resolution increases, total costs without grid expansion in Fig. 3 drop by 10% from 248 to 222 billion euro per year. Although the slope of the cost curve appears constant, note that the x-axis is logarithmic, so that the rate of cost decrease slows as the number of sites increases.

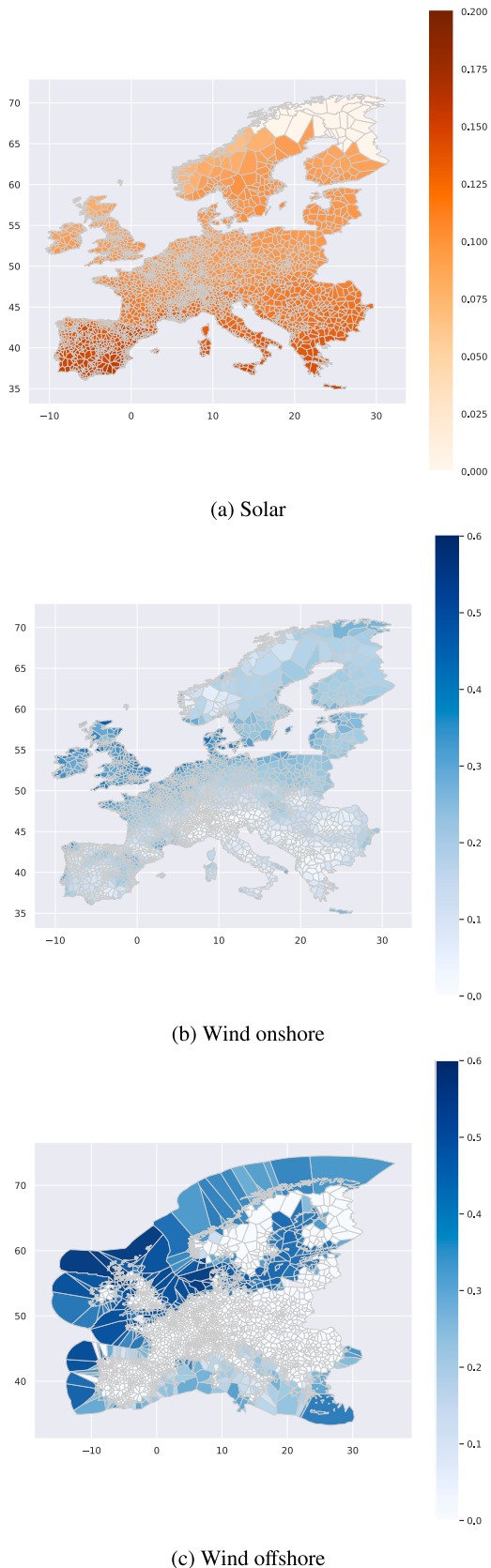


Fig. 9. Wind and solar capacity factors in Europe for the weather year 2013 at full resolution.

The cost reduction is driven by strong changes in the investment between generation technologies, particularly the ratio between offshore and onshore wind (see Fig. 4). At low spatial resolution, good and bad onshore sites are mixed together, diluting onshore capacity factors and making onshore a less attractive investment. Fig. 9 in the Appendix shows how the capacity factors for wind and solar vary across the continent. While offshore is spatially concentrated and solar capacity factors are relatively evenly spread in each country-zone, onshore wind is stronger near coastlines. At high spatial resolution the model can choose to put onshore wind only at the best sites (within land restrictions), increasing average capacity factors and thus lower the per-MWh-cost. (The increasing average capacity factors are plotted in Fig. 11 in the Appendix.) As a result, onshore wind investments more than double from 24 to 54 billion euros per year, while offshore investments drop 37% from 100 to 64 billion per year and solar by 23%. The biggest effect on the technology mix is when going from 37 to around 181 clusters; beyond that the changes are smaller.

3.3. Case 3 - Impact of transmission bottlenecks

In Case 3 we fix a high resolution of wind and solar generators (1024 sites) and vary the resolution of the transmission network to gauge the impact of transmission bottlenecks. With 37 network nodes many bottlenecks are not visible, so costs are lower, but as the resolution increases to 1024 nodes it drives up the costs by 23%. Note that because the x-axis is logarithmic, the highest rate of cost increase is when the number of nodes is small.

As can be seen from the breakdown in Fig. 4, the rising transmission investments from the higher resolution only have a small contribution to the result. Instead, rising costs are driven by generation and storage. Unlike Cases 1 and 2, the ratio between the generation technologies does not change dramatically with the number of clusters, but the capacities for onshore wind, solar, batteries and hydrogen storage all rise.

The transmission bottlenecks limit the transfer of power from the best sites to the load, forcing the model to build onshore wind and solar more locally at sites with lower capacity factors. Average capacity factors of onshore wind and solar sink by 11% and 6% respectively with no grid expansion (see Fig. 11 in the Appendix), meaning that more capacity is needed for the same energy yield. Curtailment is generally low in the optimal solution (around 3% of available wind and solar energy) and has less of an effect on costs (see Fig. 12 in the Appendix).

Investment in battery and hydrogen storage rises with the number of network nodes since the storage is used to balance local wind and solar variations in order to avoid overloading the grid bottlenecks.

3.4. Comparison of the three cases

Separating the effects of resource resolution from network resolution reveals that the apparent stability of total system costs in Case 1 in Fig. 3 as the number of clusters changes, as reported in [34], is deceptive. In fact, the sinking costs from the higher resource resolution are counteracted by the rising costs from network bottlenecks. With no grid expansion, the system cost of network bottlenecks is double the benefit of the higher resource resolution.

While these two effects offset each other at the level of total system costs, they have very different effects on the technology mix. Resource resolution leads to much stronger investment in onshore wind, once good sites are revealed. Network bottlenecks have only a weak effect on the ratio of generation technologies, but lead to lower average capacity factors and drive up storage requirements.

3.5. Benefits of grid expansion

Grid expansion does not affect the main qualitative features of the different Cases, but it does have the overall effect of lowering total system costs. In Case 1, the total cost-benefit of grid expansion is highest

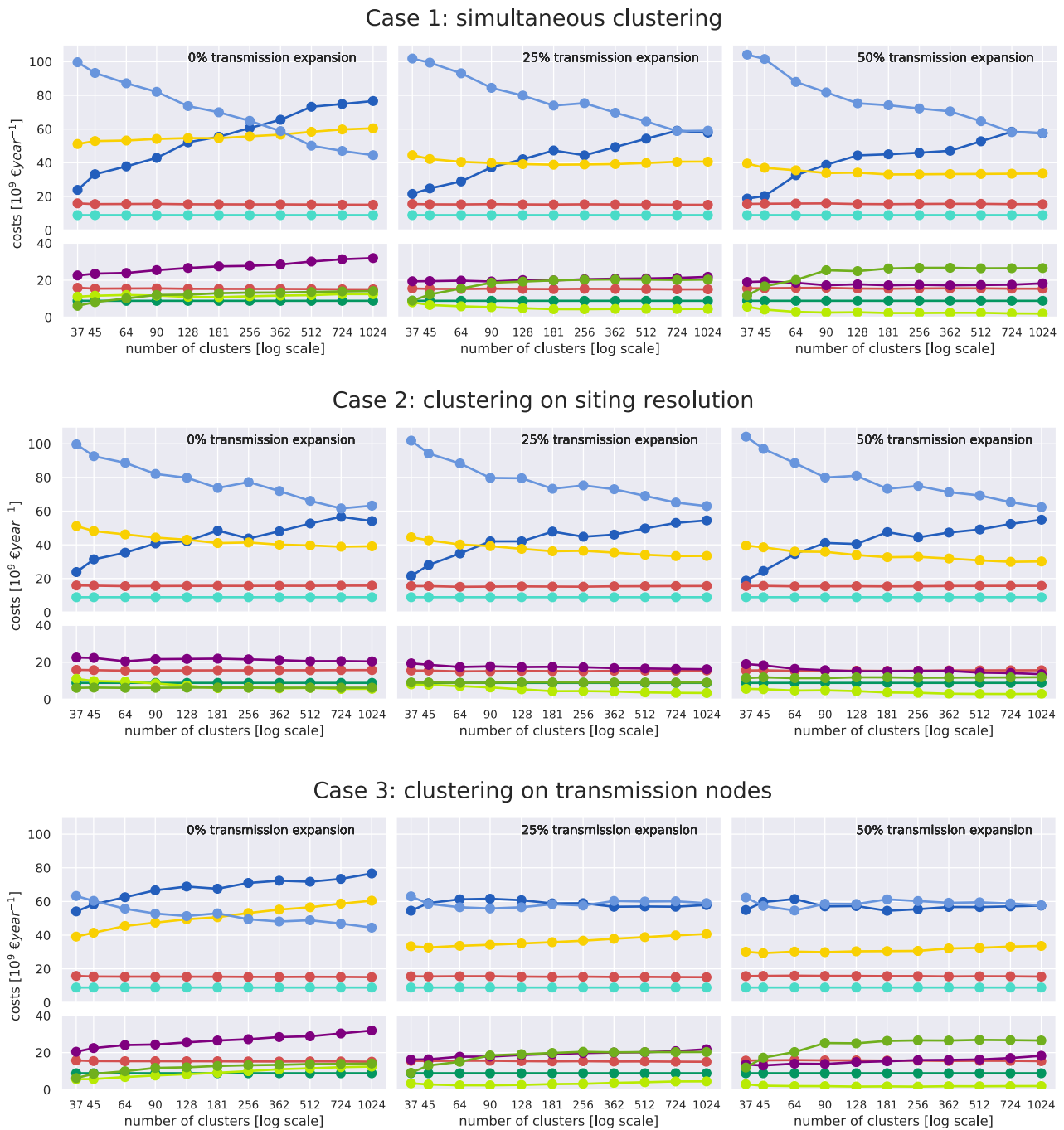


Fig. 10. Technology breakdown of the annual system costs for generation (top) and flexibility options (bottom) as a function of the number of clusters for Cases 1, 2 and 3. Cases correspond to the rows, while transmission expansion scenarios correspond to the columns.



Fig. 11. Average capacity factors for each technology for the no transmission expansion scenario in all three cases.

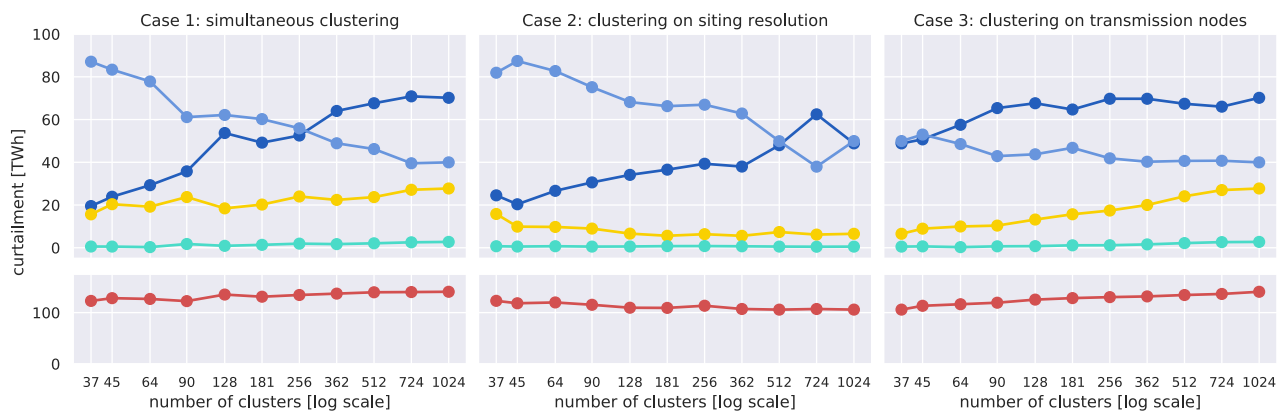


Fig. 12. Curtailment for the no transmission expansion scenario in all three cases.

at around 16% for a 50% increase in grid capacity, with the marginal benefit still increasing, but it is subject to diminishing returns (see Appendix Fig. 14 for a comparison of the marginal benefit to the cost of transmission). The first 9% of additional grid capacity brings total cost savings of up to 8%, but for each extra increment of grid expansion, the benefit is weaker. There is more benefit from grid expansion at a higher number of nodes, since the higher network resolution reveals more critical bottlenecks in the transmission system.

The total savings from 25% and 50% grid expansion are around 36 and 44 billion euros per year respectively. In a 2018 study ENTSO-E examined scenarios with up to 75% renewable electricity in Europe in 2040 with and without planned TYNDP grid expansions (corresponding to around 25% grid expansion), given fixed demand and a fixed generation fleet. They found that the grid reinforcements reduce generation costs by 43 billion euros per year. This is higher than our cost-benefit for 25% grid expansion, despite their study’s lower level of renewable electricity, because in our simulations the generation and storage fleet can be re-optimised to accommodate the lower level of grid capacity, and because we subtract the costs of new grid reinforcement from the cost-benefit (a contribution of around 3.5 billion euros per year).

The breakdown of system cost as the grid is expanded for a fixed number of clusters (256), plotted in Fig. 5, reveals how costs are reduced. Although the investment in transmission lines rises, generation

and storage costs reduce faster as investment shifts from solar and onshore wind to offshore wind. Offshore wind reduces costs because of its high capacity factors and more regular generation pattern in time. It can be transported around the continent more easily with more transmission, and benefits from the smoothing effects over a large, continental area that grid expansion enables. The map of investments in Fig. 6 shows how offshore wind is balanced by new transmission around the North Sea, which smooths out weather systems that roll across the continent from the Atlantic. Further transmission reinforcements bring energy inland from the coastlines to load centers. With more transmission, there is less investment in battery and hydrogen storage, as a result of the better balancing of weather-driven variability in space.

Turning to Case 3, we see that grid expansion mitigates the effect of network resolution by allowing bottlenecks to be alleviated. For a 50% increase in transmission capacity, total costs rise by only 4% from 90 nodes up to 1024 nodes. The distribution of investments between technologies also barely changes in this range (see Appendix Fig. 10). This means that a grid resolution of around 90 nodes can give acceptable solutions for grid expansion scenarios if computational resources are limited, as long as the wind and solar resolution is high enough (as in Case 2, 181 generation sites would suffice). Without grid expansion, a higher grid resolution is needed to capture the effects of bottlenecks and achieve reliable results.



Fig. 13. Capacities per country for the no transmission expansion scenario in all three cases.

3.6. Computation times and memory

Besides the poor availability of data at high resolution, one of the main motivations for clustering the network is to reduce the number of variables and thus the computation time of the optimisation. In Appendix Fig. 15 the memory and solving time requirements for each Case are displayed as a function of the number of clusters. Both memory and

solving time become limiting factors in Cases 1 and 3, with random access memory (RAM) usage peaking at around 115 GB and solving time at around 6 days for 1024 clusters. Beyond this number of clusters no consistent convergence in the solutions was seen.

Case 2, where the network resolution is left low and the resource resolution is increased, shows seven times lower memory consumption and up to thirteen times faster solving times compared to Cases 1 and 3 for the same number of clusters. It is therefore the network resolution rather than the resource resolution that drives up computational requirements, which it does by introducing many new variables and possible spatial trade-offs into the optimisation. Since Case 2 proved relatively reliable for estimating the ratio between technologies, if not their total capacity, it may prove attractive to increase the resource resolution rather than the network resolution if computational resources are limited.

3.7. Further results

Further results on curtailment, average capacity factors, the distribution of technologies between countries, maps, network flows and shadow prices can be found in the Appendix, as well as a discussion of the limitations of the model.

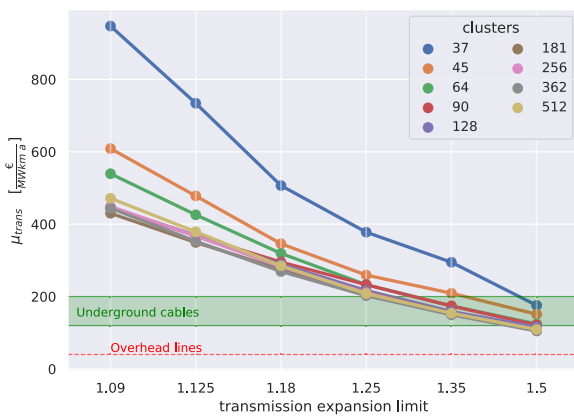


Fig. 14. Shadow (dual) price of the line volume constraint.

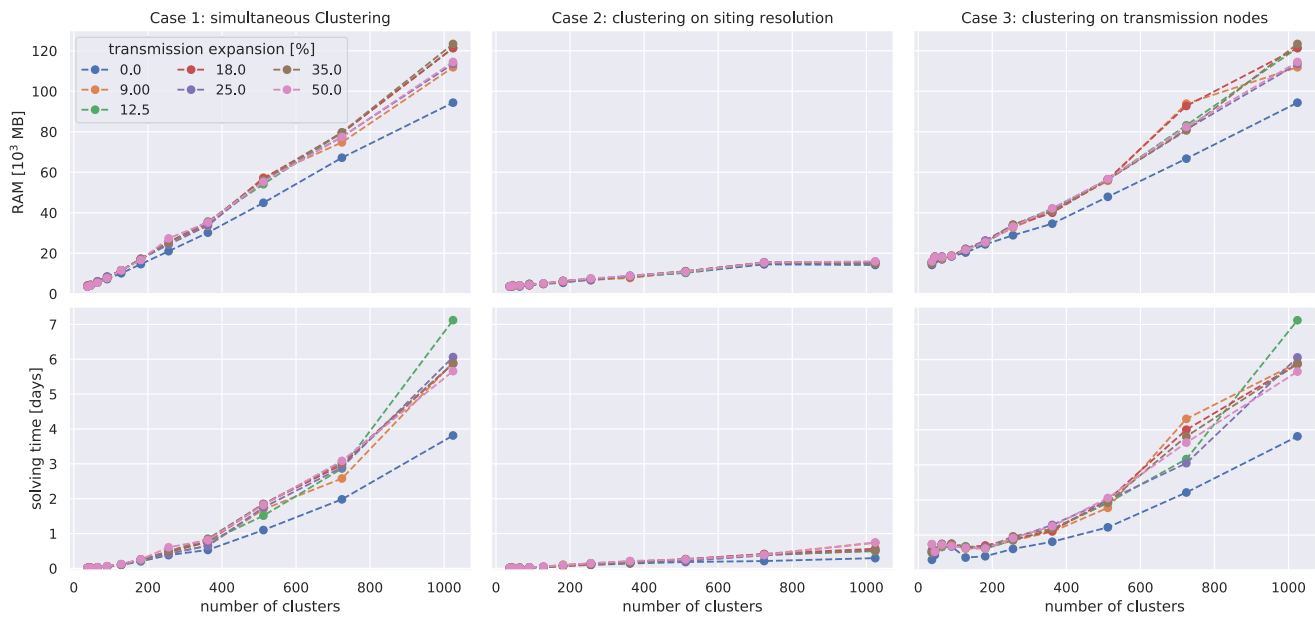


Fig. 15. Memory consumption and solving time.

4. Conclusion

From these investigations we can draw several conclusions. Modellers need to take account of spatial resolution, since it can have a strong effect on modelling results. In our co-optimization of generation, storage and network capacities, higher network resolution can drive up total system costs by as much as 23%. Higher costs are driven by the network bottlenecks revealed at higher resolution that limit access to wind and solar sites with high capacity factors. On the other hand, resource resolution affects the balance of technologies by revealing more advantageous onshore wind sites. In both cases the system costs are driven more by the useable generation resources than investments in the grid or storage.

If grid expansion can be assumed, a grid resolution of 90 nodes for Europe is sufficient to capture costs and technology investments as long as the solar and onshore wind resolution is at least around 181 nodes. If grid expansion is not possible, a higher spatial resolution for the grid is required for reliable results on technology choices. Since grid expansion is likely to be limited in the future by low public acceptance, more attention will have to be paid to the computational challenge of optimizing investments at high spatial granularity.

Data availability

Lead contact

Please contact the Lead Contact, Martha M. Frysztacki (martha.frysztacki@kit.edu), for information related to the data and code described in the following Material and Methods section.

Materials Availability

No materials were used in this study.

Data and Code Availability

All the code and input data from PyPSA-Eur are openly available online on GitHub and Zenodo [53,63]. All model output data is available on Zenodo under a Creative Commons Attribution Licence [64].

Glossary

All notation is listed in Table 2.

CRediT authorship contribution statement

Martha Maria Frysztacki: Conceptualization, Methodology, Software, Formal analysis, Data curation, Writing - original draft, Writing - review & editing, Visualization. **Jonas Hörsch:** Conceptualization, Methodology, Software, Data curation, Writing - review & editing, Visualization. **Veit Hagenmeyer:** Writing - review & editing, Funding acquisition. **Tom Brown:** Conceptualization, Methodology, Writing - original draft, Writing - review & editing, Project administration, Funding acquisition.

Declaration of Competing Interest

The authors declare that they have no competing financial interests.

Acknowledgements

We thank Martin Greiner, Fabian Neumann, Lina Reichenberg, Mirko Schäfer, David Schlachtberger, Kais Siala and Lisa Zeyen for

helpful discussions, suggestions and comments. MF, JH and TB acknowledge funding from the Helmholtz Association under Grant No. VH-NG-1352. The responsibility for the contents lies with the authors.

Appendix A

A.1. Preservation of flow patterns with clustering

To understand how well the k -means clustering preserves flow patterns, we took a fixed dispatch pattern for the assets in Europe at high resolution and examined how the network flows changed as the network was clustered.

The fixed dispatch was determined by solving the linearised optimal power flow problem for a 1024-node representation of today's European electricity system. The asset dispatch was then mapped into the clustered networks, and a regular linearised power flow was solved in the clustered network.

If lines $\ell \in N_{c,d}$ in the 1024-node network were mapped to a single representative line $\ell_{c,d}$ in the clustered network, the summed flows from the original network $\hat{f}_{c,d,t} = \sum_{\ell \in N_{c,d}} f_{\ell,t}$ ('microscopic flows') were then compared to the flow $f_{c,d,t}$ in line $\ell_{c,d}$ of the clustered network ('macroscopic flows').

Fig. 7 shows the Pearson correlation coefficient between the flows $f_{c,d,t}$ of aggregated lines $\ell_{c,d}$ in the lower resolution network and the summed flows $\hat{f}_{c,d,t}$ of all lines in $N_{c,d}$ in the full resolution network. Red is a linear fit through the points. The distortion from linearity is due to a non-linear scale in the x -axis. Even at 37 nodes the correlation between the flows is good (Pearson correlation coefficient above 0.90) and shows an improving trend until at full 1024-node resolution the flows are once again perfectly equal.

Example density plots of the $\hat{f}_{c,d,t}$ against the $f_{c,d,t}$ for all lines and all times are plotted for different clustering levels in Fig. 8. The match between the flows is better for higher resolution networks, with a near-diagonal line already for 362 nodes.

For a more probabilistic approach, we perform a kernel density estimation (KDE) by applying a fast Fourier transformation of aggregated flows of the higher resolved network versus the flows of the low resolution network. Aggregated flows $\hat{f}_{c,d,t}$ are considered an estimator for the flow $f_{c,d,t}$ in the representative lower resolution network. The resulting density functions from the KDE are displayed in Fig. 8. For the low resolution network, the probability distribution has two different modes, while a higher resolution network approaches a Gaussian distribution. The variance of the probability density function for a low resolution network is higher than for a high resolution network, as each of the quantile isolines are broader.

A.2. Maps of capacity factors for wind and solar

Figs. 9a–c present average capacity factors over the weather year 2013 for solar, wind on- and off-shore respectively, i.e.

$$\bar{g}_{n,s} = \langle \bar{g}_{n,s,t} \rangle_t \quad \forall n,$$

where $s \in \{\text{solar, wind onshore, wind offshore}\}$. The capacity factors are shown in the Voronoi cells around each of the 1024 node of the original network, i.e. the set of points closest to each node.

The graphics show that capacity factors for solar are decreasing from South to North while those for wind are increasing towards the North and Baltic Sea. The average capacity factors are spatially correlated, but as they are aggregated over larger and larger areas using the weighted average from the clustering approach in Eq. (6), they decline as bad sites are mixed with good sites. This is reflected in Fig. 11, which shows how the average capacity factors per technology for the generation fleet optimized over the whole of Europe change with the clustering.

A.3. Breakdowns for multiple transmission expansion scenarios

Fig. 10 shows an extension of the cost breakdowns in Fig. 4 from the scenario with no transmission to scenarios with 25% and 50% grid expansion. The general trends are the same as for the scenario without grid expansion, but grid expansion generally allows more wind capacity to be built, resulting in lower investment in solar, batteries and hydrogen storage, as was seen in Fig. 5.

A.4. Average capacity factors per technology

To understand how the model exploits the best available resource sites per node, we examine a time-averaged technology-specific capacity factor \bar{g}_s . The capacity factor is weighted by how much capacity $G_{n,s}$ of technology s was built at each node n with time-averaged capacity factor $\bar{g}_{n,s} = \langle \bar{g}_{n,s,t} \rangle_t$.

$$\bar{g}_s := \frac{\sum_n \bar{g}_{n,s} \cdot G_{n,s}}{\sum_n G_{n,s}}.$$

We present this technology-specific capacity factor in Fig. 11 for all three cases with the no-expansion transmission scenario, i.e. where $F_{\ell} = F_{\ell}^{2018}$.

As the number of clusters increases, Case 2 has a larger variety of sites per node to choose where capacity should be installed optimally and is not restricted by transmission constraints beyond country-zones. Therefore, the more sites are available, the higher the weighted capacity factor is because it is not mixed with lower capacity factor sites in Eq. (6). The highest resolution of Case 2 is also the lowest resolution of Case 3: many resource sites and only one node per country-zone. As the number of nodes in Case 3 increases while the same sites are available, transmission bottlenecks force the model to build more capacity in locations of worse capacity factors. Therefore, the capacity factors drop again. For Case 1, where resource resolution and network resolution change in tandem, the resource resolution dominates and we see increasing capacity factors like in Case 2.

A.5. Curtailment per technology

Curtailment is the amount of energy that is available in theory but cannot be injected into the grid because of transmission constraints or a lack of demand:

$$\bar{g}_{n,s,t} \cdot G_{n,s} - g_{n,s,t}$$

Fig. 12 shows total curtailment per technology in all Cases. Curtailment in all situations is low (less than 4% of total demand). Curtailment increases with higher network resolution in both the Cases 1 and 3 that incorporate transmission constraints, while it is gently decreasing with resource resolution in Case 2 where there are only transmission constraints at the boundaries of country-zones.

A.6. Breakdowns by country

Figs. 4 and 10 show the breakdown of total costs by technology for the whole of Europe. However, it could be that for each technology, the spatial distribution is unstable, moving from country to country with the clustering changes.

For a better understanding of the spatial distribution of installed capacity, we examine the total installed renewable capacity per country in all Cases in Fig. 13 with no transmission expansion. The general trend is that the total installed capacity per country is relatively stable with cluster resolution. In Case 2 capacity decreases with resolution, since the exploitation of better resource sites means that less capacity is needed for a given energy yield. The opposite effect is seen in Case 3, while Case 1 reveals a mix of the effects of Case 2 and 3.

A.7. Shadow price of line volume constraint

The shadow price μ_{trans} of the transmission expansion constraint in Eq. (16) corresponds to the system cost benefit of an incremental MWkm of line volume. Read another way, it is the line cost required to obtain the same solution with the constraint removed (i.e. lifting the constraint into the objective function as a Lagrangian relaxation).

We present the resulting shadow prices in Fig. 14, where they are compared with the annuity for underground and overhead lines. Using the cost of underground cables, the cost-optimal solution would give a grid expansion of 25–50% at high resolution. For overhead transmission, the cost optimum would be over 50%.

A.8. Capacity factors within each cluster region for wind and solar

In this subsection we analyse the homogeneity of time-average capacity factors for wind and solar within each cluster region as the number of clusters changes. Duration curves of the capacity factors in each of the $0.3^{\circ} \times 0.3^{\circ}$ weather pixels of the original ERA5 reanalysis dataset [38] for the European area ('cutout') are plotted in blue in Fig. 16. In addition, the duration curves for the pixels in each cluster are plotted in orange, with the median for each cluster in red. This reveals how much the capacity factors of wind and solar vary within each cluster region, compared to the whole of Europe. Table 4 presents the average standard deviation with each cluster region for each technology and resolution.

For a high resolution of 1024 clusters, we observe that the median values (red dots) for solar lie very close to the representative values of Europe (black line) with a relatively small average standard deviation of $1.9 \cdot 10^{-3}$ inside each cluster region (scattering of the orange dots). In the case of onshore wind, the high capacity factors are underestimated by the median value, while intermediate and low capacity factors are represented with a minor difference between median and representative European value. For onshore wind, the average standard deviation of the capacity factors within each region is larger than for solar by one magnitude ($\mathcal{O}(10^{-2})$), represented by the scattering of orange dots). The largest variance can be observed in offshore regions, where the average standard deviation is $4.3 \cdot 10^{-2}$, twice as large as for onshore regions, and the low capacity factors are overestimated by their representative median values.

In the case of 256 clusters, the standard deviation per region (scattered orange dots) doubles compared to a resolution of 1024 sites for solar and increases by $\sim 50\%$ for onshore and offshore wind. However, the median values (red dots) per site do not change much compared to the higher resolution case. Only at very low resolutions or, in the extreme, one site representing one country-zone, the median values (red dots) do not agree with the European curve (black line), and the capacity values per site (orange scattered dots) cover a wide range of values (for example 0–0.5 for wind onshore, or 0.11–0.18 for solar). At 37 nodes, the average standard deviation is three times larger for solar compared to a resolution of 1024 sites and twice as large for onshore wind.

From this analysis we can conclude that a resource resolution of at least several hundred nodes is required to adequately capture the resource variation within Europe, with a higher resolution required for wind than for solar.

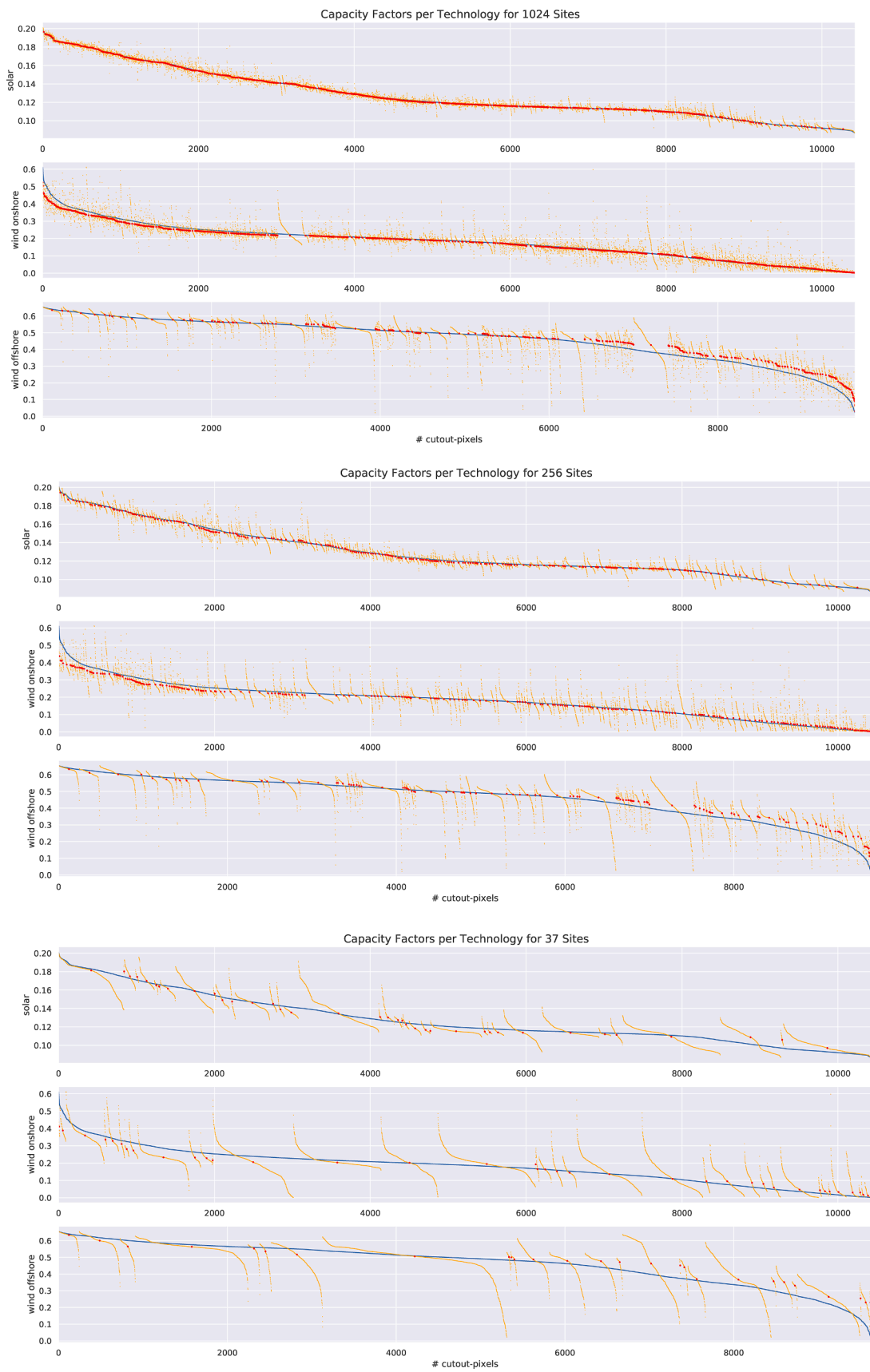


Fig. 16. Breakdown of capacity factors per technology for the weather cutout pixels inside each cluster region as a duration curve (orange), with the median marked in red. The overall duration curve of pixel capacity factors for the whole of Europe is plotted in blue.

A.9. Limitations of this study

The need to solve the models at high spatial resolution and 3-hourly temporal resolution in reasonable time means that compromises have been made elsewhere: the conventional generation technologies are limited to hydroelectricity and gas turbines, the storage is limited to batteries and hydrogen storage, only a single weather year is modelled, and ancillary services, grid losses, discretisation of new grid capacities, distribution grids and forecast error are not modelled. This allows us to focus on the main interactions between wind, solar and the transmission grid; the effects of the other factors are expected to be small [3] since wind and solar investment dominates system costs. If it were cost-effective to build dispatchable low-carbon generators like nuclear or fossil generators with carbon capture and sequestration, then the effects of resource and network resolution would be dampened, since there would be less wind and solar investment.

Some of the quantitative conclusions may depend on the technology assumptions, such as the relative cost of solar PV, onshore wind and offshore wind. However, investigations of the sensitivities of similar models to generation costs [65] and of the near-optimal space of solutions [66] have shown that a large share of wind in low-cost scenarios for Europe is robust across many scenarios because of the seasonal matching of wind to demand in Europe. It is the interactions between wind and the transmission grid that drive the results in this paper.

The results may also change as additional energy sectors are coupled to the power sector, such as building heating, transport and non-electric industry demand. While extra flexibility from these sectors might offer an alternative to grid expansion, grid expansion is still expected to be cost-effective [67], while the effects of resource resolution on the optimal solution remain the same.

In the present paper different market structures to today's are assumed, namely nodal pricing to manage grid congestion, and a high CO₂ price to obtain a 95% CO₂ reduction compared to 1990 levels.

We weighted the distribution of wind and solar inside each nodal region (Voronoi cell) proportional to the installable capacity and capacity factor at each weather grid cell [15]. This means good and bad sites are not mixed evenly, but skewed slightly towards good sites. This effect disappears at high resolution, where the capacity factor is more uniform inside each Voronoi cell.

Another approach would be to keep a low one-node-per-country network resolution and then have multiple resource classes defined not by region, like our Case 2, but by capacity factor [8,68,69] (e.g. a good class with sites with full load hours above 2000, a medium class between 1500 and 2000, and a bad class below 1500). This would also be beneficial but would not be compatible with the increasing grid resolution, since the generators in each class would be spread non-contiguously over the country.

References

- [1] Stefan Pfenninger AH, Keirstead J. Energy systems modeling for twenty-first century energy challenges. *Renew Sustain Energy Rev* 05/2014.;22:74–86. <https://doi.org/10.1016/j.rser.2014.02.003>.
- [2] Biggar DR, Hesamzadeh MR, editors. The economics of electricity markets. John Wiley & Sons Ltd.; 2014. <https://doi.org/10.1002/9781118775745>.
- [3] Brown T, Bischof-Niemz T, Blok K, Breyer C, Lund H, Mathiesen B. Response to 'Burden of proof: A comprehensive review of the feasibility of 100% renewable-electricity systems'. *Renew Sustain Energy Rev* 2018;92:834–47. <https://doi.org/10.1016/j.rser.2018.04.113>.
- [4] Kotzur L, Markewitz P, Robinius M, Stolten D. Impact of different time series aggregation methods on optimal energy system design. *Renewable Energy* 2018; 117:474–87. <https://doi.org/10.1016/j.renene.2017.10.017>.
- [5] Perera ATD, Nik VM, Chen D, Scartezzini JL, Hong T. Quantifying the impacts of climate change and extreme climate events on energy systems. *Nature Energy* 2020;5:150–9. <https://doi.org/10.1038/s41560-020-0558-0>.
- [6] Czisch G. Szenarien zur zukünftigen Stromversorgung: Kostenoptimierte Variationen zur Versorgung Europas und seiner Nachbarn mit Strom aus erneuerbaren Energien. Ph.D. thesis. Universität Kassel; 2005. URL <https://kobra.bibliothek.uni-kassel.de/bitstream/urn:nbn:de:hebis:34-200604119596/1/DissVersion0502.pdf>.
- [7] Rodriguez R, Becker S, Andresen G, Heide D, Greiner M. Transmission needs across a fully renewable European power system. *Renewable Energy* 2014;63:467–76. <https://doi.org/10.1016/j.renene.2013.10.005>.
- [8] Schlachtberger D, Brown T, Schramm S, Greiner M. The benefits of cooperation in a highly renewable European electricity network. *Energy* 09/2017.;134:469–81. <https://doi.org/10.1016/j.energy.2017.06.004>.
- [9] MacDonald AE, Clack CTM, Alexander A, Dunbar A, Wilczak J, Xie Y. Future cost-competitive electricity systems and their impact on US CO₂ emissions. *Nature Climate Change* 2017;6:526–31. <https://doi.org/10.1038/nclimate2921>.
- [10] Gils HC, Scholz Y, Pregarer T, de Tena DL, Heide D. Integrated modelling of variable renewable energy-based power supply in Europe. *Energy* 2017;123:173–88. <https://doi.org/10.1016/j.energy.2017.01.115>.
- [11] Galvin R. Trouble at the end of the line: Local activism and social acceptance in low-carbon electricity transmission in Lower Franconia, Germany. *Energy Res Soc Sci* 2018;38:114–26. <https://doi.org/10.1016/j.erss.2018.01.022>.
- [12] Cohen JJ, Reichl J, Schmidthalmer M. Re-focussing research efforts on the public acceptance of energy infrastructure: A critical review. *Energy* 2014;76:4–9. <https://doi.org/10.1016/j.energy.2013.12.056>.
- [13] European Network of Transmission System Operators for Electricity. Ten-Year Network Development Plan (TYNDP) 2018. Technical Report. ENTSO-E, 2018.
- [14] European-Commission. Energy roadmap 2050. COM. 2011 885/2, 12/2011.
- [15] Hörsch J, Hofmann F, Schlachtberger D, Brown T. PyPSA-Eur: An Open Optimisation Model of the European Transmission System. *Energy Strategy Rev* 11/2018.;22:207–15. <https://doi.org/10.1016/j.esr.2018.08.012>.
- [16] Jain AK, Murty MN, Flynn PJ. Data clustering: A review. *ACM Comput Surv* 1999; 31:264–323. <https://doi.org/10.1145/331499.331504>.
- [17] Blumsack S, Hines P, Patel M, Barrows C, Sanchez EC. Defining power network zones from measures of electrical distance. In: 2009 IEEE Power Energy Society General Meeting; 2009. p. 1–8. doi:10.1109/PES.2009.5275353.
- [18] Hamon C, Shayesteh E, Amelin M, Söder L. Two partitioning methods for multi-area studies in large power systems. *Int Trans Electrical Energy Syst* 2015;25: 648–60. <https://doi.org/10.1002/etep.1864>. eTEP-12-0480.R1.
- [19] Cheng X, Overbye TJ. PTDF-based power system equivalents. *IEEE Trans Power Syst* 2005;20:1868–76. <https://doi.org/10.1109/TPWRS.2005.857013>.
- [20] Singh HK, Srivastava SC. A reduced network representation suitable for fast nodal price calculations in electricity markets. In: IEEE Power Engineering Society General Meeting, 2005, vol. 2. 2005. p. 2070–2077. doi:10.1109/PES.2005.1489092.
- [21] Shayesteh E, Hobbs BF, Söder L, Amelin M. ATC-Based System Reduction for Planning Power Systems With Correlated Wind and Loads. *IEEE Trans Power Syst* 2015;30:429–38. <https://doi.org/10.1109/TPWRS.2014.2326615>.
- [22] Siala K, Mahfouz MY. Impact of the choice of regions on energy system models. *Energy Strategy Rev* 08/2019.;25:75–85. <https://doi.org/10.1016/j.esr.2019.100362>.
- [23] Küppers M, Perau C, Franken M, Heger H, Huber M, Metzger M, Niessen S. Data-driven regionalization of decarbonized energy systems for reflecting their changing topologies in planning and optimization. *Energies* 2020;13:4076. <https://doi.org/10.3390/en13164076>.
- [24] Tröndle T, Lilliestam J, Marelli S, Pfenninger S. Trade-Offs between Geographic Scale, Cost, and Infrastructure Requirements for Fully Renewable Electricity in Europe. *Joule* 2020;1–20. <https://doi.org/10.1016/j.joule.2020.07.018>.
- [25] Egerer J, Lorenz C, Gerbaulet C. European electricity grid infrastructure expansion in a 2050 context. In: 10th International Conference on the European Energy Market. IEEE; 2013. p. 1–7. URL http://ieeexplore.ieee.org/xpl/freeabs_all.jsp?arnumber=6607408.
- [26] Hess D, Wetzel M, Cao KK. Representing node-internal transmission and distribution grids in energy system models. *Renewable Energy* 2018;119:874–90. <https://doi.org/10.1016/j.renene.2017.10.041>.
- [27] Nabe C. Impacts of restricted transmission grid expansion in a 2030 perspective in Germany. In: Wind Integration Workshop, Berlin; 2014.
- [28] Kombikraftwerk 2: Abschlussbericht. Technical Report. Fraunhofer IWES and others, 2014.
- [29] Brown T, Schierhorn P, Tröster E, Ackermann T. Optimising the European transmission system for 77% renewable electricity by 2030. *IET Renew Power Gener* 2016;10:3–9.
- [30] Schäfer M, Siggaard SB, Zhu K, Poulsen CR, Greiner M. Scaling of transmission capacities in coarse-grained renewable electricity networks. *EPL (Europhys Lett)* 2017;119:38004. <https://doi.org/10.1209/0295-5075/119/38004>.
- [31] Cole W, Frew B, Mai T, Sun Y, Bistline J, Blanford G, et al. Variable Renewable Energy in Long-Term Planning Models: A Multi-Model Perspective. Technical Report, 2017. URL <https://www.osti.gov/biblio/1416124>, doi:10.2172/1416124.
- [32] Krishnan V, Cole W. Evaluating the value of high spatial resolution in national capacity expansion models using reeds. In: 2016 IEEE Power and Energy Society General Meeting (PESGM); 2016. p. 1–5. doi:10.1109/PESGM.2016.7741996.
- [33] Brown T, Hörsch J, Schlachtberger D. PyPSA: Python for Power System Analysis. *J Open Res Softw* 2018;6:4. <https://doi.org/10.5334/jors.188>.

- [34] Hörsch J, Brown T. The role of spatial scale in joint optimisations of generation and transmission for European highly renewable scenarios. In: Proceedings of 14th International Conference on the European Energy Market (EEM 2017), 2017. <https://arxiv.org/abs/1705.07617>, doi:10.1109/EEM.2017.7982024.
- [35] ENTSO-E Interactive Transmission System Map, 2017. <https://www.entsoe.eu/map/>.
- [36] Wiegmans B. GridKit extract of ENTSO-E interactive map, 2016, doi:10.5281/zenodo.55853.
- [37] Load in hourly resolution, 2019. <http://www.open-power-system-data.org/>. doi: 10.25832/time_series/2019-06-05.
- [38] ERA5 Reanalysis, 2017. <https://software.ecmwf.int/wiki/display/CKB/ERA5+data+documentation>.
- [39] Pfeifroth U, Kothe S, Müller R, Trentmann J, Hollmann R, Fuchs P, et al. Surface Radiation Data Set - Heliosat (SARAH) - Edition 2, 2017. doi: 10.5676/EUM_SAF_CM/SARAH/V002.
- [40] Frysztacki MM, Brown T. Modeling curtailment in Germany: How spatial resolution impacts line congestion. In: Proceedings of 17th International Conference on the European Energy Market (EEM 2020), 2020. doi: 10.1109/EEM49802.2020.9221886.
- [41] Hartigan JA, Wong MA. Algorithm AS 136: A K-means clustering algorithm. *Appl Stat* 1979;28:100–8.
- [42] Cotilla-Sanchez E, Hines PDH, Barrows C, Blumsack S, Patel M. Multi-attribute partitioning of power networks based on electrical distance. *IEEE Trans Power Syst* 2013;28:4979–87. <https://doi.org/10.1109/TPWRS.2013.2263886>.
- [43] eHighways 2050 Final Reports. Technical Report. ENTSO-E and others, 2015.
- [44] Biener W, Garcia Rosas KR. Grid reduction for energy system analysis. *Electric Power Syst Res* 2020;185:106349. <https://doi.org/10.1016/j.epsr.2020.106349>.
- [45] Temraz H, Salama M, Quintana V. Application of partitioning techniques for decomposing large-scale electric power networks. *Int J Electrical Power Energy Syst* 1994;16:301–9. [https://doi.org/10.1016/0142-0615\(94\)90034-5](https://doi.org/10.1016/0142-0615(94)90034-5). URL <http://www.sciencedirect.com/science/article/pii/0142061594900345>.
- [46] Chiara Scaramuzzino GG, Zambelli P. Integrated approach for the identification of spatial patterns related to renewable energy potential in European territories. *Renew Sustain Energy Rev* 03/2019.;101:1–13. <https://doi.org/10.1016/j.rser.2018.10.024>.
- [47] Oh H. A new network reduction methodology for power system planning studies. *IEEE Trans Power Syst* 2010;25:677–84. <https://doi.org/10.1109/TPWRS.2009.2036183>.
- [48] Shi D, Tylavsky DJ. A novel bus-aggregation-based structure-preserving power system equivalent. *IEEE Trans Power Syst* 2015;30:1977–86. <https://doi.org/10.1109/TPWRS.2014.2359447>.
- [49] Technology Data for Generation of Electricity and District Heating, Energy Storage and Energy Carrier Generation and Conversion. Technical Report. Danish Energy Agency and Energinet.dk, 2019. URL <https://ens.dk/en/our-services/projections-and-models/technology-data>.
- [50] Schröder A, Kunz F, Meiss J, Mendelevitch R, von Hirschhausen C. Current and prospective costs of electricity generation until 2050. Data Documentation, DIW 68. Deutsches Institut für Wirtschaftsforschung (DIW). Berlin, 2013. <http://hdl.handle.net/10419/80348>.
- [51] Budischak C, Sewell D, Thomson H, Mach L, Veron DE, Kempton W. Cost-minimized combinations of wind power, solar power and electrochemical storage, powering the grid up to 99.9% of the time. *J Power Sources* 2013;225:60–74. <https://doi.org/10.1016/j.jpowsour.2012.09.054>.
- [52] Vartiainen E, Masson G, Breyer C. The True Competitiveness of Solar PV: A European Case Study. Technical Report. European Technology and Innovation Platform for Photovoltaics, 2017. URL http://www.etip-pv.eu/fileadmin/Documents/ETIP_PV_Publications_2017-2018/LCOE_Report_March_2017.pdf.
- [53] PyPSA-Eur on GitHub, 2020. <https://github.com/PyPSA/pypsa-eur>.
- [54] Ryberg D, Robinius M, Stolten D. Evaluating Land Eligibility Constraints of Renewable Energy Sources in Europe. *Energies* 2018;11:1246. <https://doi.org/10.3390/en11051246>. URL <http://www.mdpi.com/1996-1073/11/5/1246>.
- [55] Stott B, Jardim J, Alsac O. Dc power flow revisited. *IEEE Trans Power Syst* 2009; 24:1290. <https://doi.org/10.1109/TPWRS.2009.2021235>.
- [56] Hörsch J, Ronellenfisch H, Witthaut D, Brown T. Linear optimal power flow using cycle flows. *Electric Power Syst Res* 2018;158:126–35. <https://doi.org/10.1016/j.epsr.2017.12.034>.
- [57] Stigler H. et al. Gutachten zur Ermittlung des erforderlichen Netzausbaus im deutschen Übertragungsnetz: Gutachten im Auftrag der Bundesnetzagentur. Technical Report, 2012. URL https://data.netzausbau.de/2022/NEP/NEMO_II.pdf.
- [58] Büchel HB, Natemeyer H, Winter S. Leistungsflüsse und Netzauslastung im europäischen Übertragungsnetz bis 2050: Eine Studie im Auftrag des Bundesministeriums für Umwelt, Naturschutz, Bau und Reaktorsicherheit. Technical Report, 2015. URL https://www.bmu.de/fileadmin/Daten_BMU/Pool/Forschungsdatenbank/fkz_um_11_41_130_energieinfrastruktur_europa_bf.pdf.
- [59] Fuchs B, Roehder A, Mittelstaedt M, Massmann J, Natemeyer H, Schnettler A. Studie zu Aspekten der elektrischen Systemstabilität im deutschen Übertragungsnetz bis 2023: Eine Studie im Auftrag der Bundesnetzagentur. Technical Report, 2015. URL https://www.bundesnetzagentur.de/SharedDocs/Downloads/DE/Sachgebiete/Energie/Unternehmen_Institutionen/Versorgungssicherheit/System-und_Netzstabilitaet/Gutachten_IFHT_RWTH_Systemstabilitaet_2015.pdf?__blob=publicationFile&v=1.
- [60] Regulation (EU) 2019/943 on the Internal Market for Electricity, 2019. URL <http://data.europa.eu/eli/reg/2019/943/oj>.
- [61] Hagspiel S, Jägemann C, Lindener D, Brown T, Cherevatskiy S, Tröster E. Cost-optimal power system extension under flow-based market coupling. *Energy* 2014; 66:654–66. <https://doi.org/10.1016/j.energy.2014.01.025>.
- [62] Neumann F, Brown T. Heuristics for transmission expansion planning in low-carbon energy system models. In: 2019 16th International Conference on the European Energy Market (EEM), 2019. p. 1–8. <https://www.doi.org/10.1109/EEM.2019.8916411>, doi:10.1109/EEM.2019.8916411.
- [63] Hörsch J, Neumann F, Hofmann F, Schlachtberger D, Brown T. PyPSA-Eur: An Open Optimisation Model of the European Transmission System (Version 0.1), 2019. doi: 10.5281/zenodo.3517935.
- [64] Frysztacki M, Hörsch J, Hagemeyer V, Brown T. Clustering Dataset, 2020. URL <https://doi.org/10.5281/zenodo.3965781>, doi:10.5281/zenodo.3965781.
- [65] Schlachtberger D, Brown T, Schäfer M, Schramm S, Greiner M. Cost optimal scenarios of a future highly renewable european electricity system: Exploring the influence of weather data, cost parameters and policy constraints. *Energy* 2018; 163:100–14. <https://doi.org/10.1016/j.energy.2018.08.070>.
- [66] Neumann F, Brown T. The near-optimal feasible space of a renewable power system model. *Electric Power Syst Res* 2021;190:106690. <https://doi.org/10.1016/j.epsr.2020.106690>.
- [67] Brown T, Schlachtberger D, Kies A, Greiner M. Synergies of sector coupling and transmission extension in a cost-optimised, highly renewable European energy system. *Energy* 2018;160:720–30. <https://doi.org/10.1016/j.energy.2018.06.222>.
- [68] Reichenberg L, Hedenus F, Odenberger M, Johnsson F. The marginal system LCOE of variable renewables – Evaluating high penetration levels of wind and solar in Europe. *Energy* 2018;152:914–24. <https://doi.org/10.1016/j.energy.2018.02.061>.
- [69] Mattsson N, Verendel V, Hedenus F, Reichenberg L. An autopilot for energy models – automatic generation of renewable supply curves, hourly capacity factors and hourly synthetic electricity demand for arbitrary world regions. Technical Report, 2020, URL <https://arxiv.org/abs/2003.01233>.