

SCIENTIFIC REPORTS



OPEN

Correlative cellular ptychography with functionalized nanoparticles at the Fe L-edge

Marcus Gallagher-Jones¹, Carlos Sato Baraldi Dias¹, Alan Pryor Jr.¹, Karim Bouchmella², Lingrong Zhao^{1,3}, Yuan Hung Lo¹, Mateus Borba Cardoso², David Shapiro⁴, Jose Rodriguez⁵ & Jianwei Miao¹

Precise localization of nanoparticles within a cell is crucial to the understanding of cell-particle interactions and has broad applications in nanomedicine. Here, we report a proof-of-principle experiment for imaging individual functionalized nanoparticles within a mammalian cell by correlative microscopy. Using a chemically-fixed HeLa cell labeled with fluorescent core-shell nanoparticles as a model system, we implemented a graphene-oxide layer as a substrate to significantly reduce background scattering. We identified cellular features of interest by fluorescence microscopy, followed by scanning transmission X-ray tomography to localize the particles in 3D, and ptychographic coherent diffractive imaging of the fine features in the region at high resolution. By tuning the X-ray energy to the Fe L-edge, we demonstrated sensitive detection of nanoparticles composed of a 22 nm magnetic Fe₃O₄ core encased by a 25-nm-thick fluorescent silica (SiO₂) shell. These fluorescent core-shell nanoparticles act as landmarks and offer clarity in a cellular context. Our correlative microscopy results confirmed a subset of particles to be fully internalized, and high-contrast ptychographic images showed two oxidation states of individual nanoparticles with a resolution of ~16.5 nm. The ability to precisely localize individual fluorescent nanoparticles within mammalian cells will expand our understanding of the structure/function relationships for functionalized nanoparticles.

Functionalized nanoparticles are used in a broad array of nanomedicine applications for their utility as labels and drug delivery systems^{1–4}. The ability to localize individual nanoparticles within cells is critical as it allows interactions between the nanoparticles and their target cells to be characterized, informing of the biological effects imparted by the nanoparticles. One method ideally suited to probe individual nanoparticles inside cells is coherent diffractive imaging (CDI) since it can image thick specimens with high resolution and contrast^{5–24}. Since the first experimental demonstration in 1999⁵, various CDI methods have been developed²⁵ and a particularly powerful approach for imaging extended objects such as whole cells is ptychographic CDI (also known as ptychography)^{26–42}. In ptychography, an extended sample is observed by illuminating with a coherent wave via a 2D raster scan. During such a 2D scan, diffraction patterns are recorded from overlapping fields of view with a pre-defined trajectory. The overlap between views can then be used as a strong constraint in phase retrieval algorithms³⁰, leading to a unique, robust reconstruction of the complex exit wave of the object and the illumination function^{27, 31–42}. Furthermore, by measuring diffraction intensity with a numerical aperture significantly higher than that of X-ray lenses, ptychography can reach spatial resolution far beyond those of conventional X-ray microscopy. However, this powerful capability is hampered in the case of weakly scattering objects such as biological specimens, because the background scattering of the substrate and parasitic scattering from X-ray optics can dominate the weak signals from a biological specimen^{31, 37, 40, 42, 43}.

¹Department of Physics and Astronomy and California NanoSystems Institute, University of California Los Angeles, California, 90095, USA. ²Brazilian Synchrotron Laboratory (LNLS), Brazilian Center for in Energy and Materials, CEP 13083-970, Campinas, São Paulo, Brazil. ³Department of Physics and Astronomy, Shanghai Jiao Tong University, Shanghai, 200240, China. ⁴Advanced Light Source, Lawrence Berkeley National Laboratory, Berkeley, California, 94720, USA. ⁵Department of Chemistry and Biochemistry, UCLA-DOE Institute for Genomics and Proteomics, University of California, Los Angeles, California, 90095, USA. Marcus Gallagher-Jones, Carlos Sato Baraldi Dias and Alan Pryor Jr. contributed equally to this work. Correspondence and requests for materials should be addressed to J.R. (email: jarod07@ucla.edu) or J.M. (email: miao@physics.ucla.edu)

Here we demonstrate a correlative ptychographic approach for high-resolution imaging of functionalized nanoparticles internalized within an un-sectioned mammalian cell. To achieve high spatial resolution and image contrast, we first adapt transparent graphene-oxide substrates⁴⁴ to support cells during the X-ray imaging process. Graphene and graphene-oxide films have previously been shown to be an excellent support for high-resolution electron microscopy studies of cells and macromolecules, both frozen-hydrated⁴⁵ and *in-situ*^{46–48}. Graphene-oxide in particular promotes cellular adhesion^{49,50} and growth^{51,52}. These substrates offer a significant reduction in background scattering for X-rays in the soft X-ray regime compared to conventional substrates. Next, we label HeLa cells with core-shell nanoparticles, functionalized by the addition of a fluorescent moiety and a super-paramagnetic core, and identify a region of interest using a fluorescence microscope. Finally, we combine 3D localization of nanolabels within the cell, using scanning transmission X-ray microscopy (STXM) tomography, with correlative high-resolution ptychographic imaging, with enhanced contrast for the nanoparticles by tuning the X-ray energy to the Fe L-edge. This correlative cellular imaging method allows us to localize individual nanoparticles in a cellular context at multiple length-scales, ranging from tens of microns to the ten-nanometer level.

Results

Nano-labeling of HeLa cells with fluorescent nanoparticles on a graphene-oxide substrate.

HeLa cells were first grown on a substrate specifically engineered for high-contrast imaging, consisting of a commercially available gold TEM grid coated with lacey carbon (Ted Pella) on top of which we deposited a few layers of graphene-oxide (www.graphenesupermarket.com) using the drop casting method⁴⁴. Graphene-oxide is biocompatible and allows for the adherent growth of HeLa cells while being effectively invisible to the soft X-ray probe (Fig. 1, Supplementary Fig. 1 and Materials and Methods). These grids provide significantly enhanced contrast when using the Nanosurveyor endstation in both STXM and ptychography modes (Supplementary Fig. 2). We attribute the improved stability and contrast to the atomically thin composition of the graphene layers and to the low density of graphene oxide relative to conventional silicon nitride-based supports. Graphene-oxide and silicon nitride have approximate densities of 1.9 g/cm³ and 3.4 g/cm³, respectively.

We imaged cells treated with fluorescent, core-shell mesoporous silica particles with an iron oxide core (Supplementary Fig. 3). Cells were treated with nanoparticles and suspended in growth media for 30 minutes before gentle washing to remove excess nanoparticles, leaving mainly nanoparticles that had interacted with the cell surface or had been internalized. All samples were chemically fixed with paraformaldehyde, washed, and desiccated prior to imaging.

STXM and Ptychography experiments. X-ray experiments were performed on the Nanosurveyor instrument at BL 5.3.2.1 of the Advanced Light Source⁵³. The X-ray energy was fixed at approximately 710 eV, the Fe L-edge. Incident X-rays were focused using a Fresnel zone plate with an outer diameter of 100 nm to give a total coherent flux of $\sim 5 \times 10^5$ coherent photons s⁻¹ at the sample position. An order-sorting aperture was placed slightly upstream of the focal spot to remove all but the first order of the focused beam.

To facilitate a full range of rotation without obstructing the order sorting aperture, grids containing adhered cells and nano-labels were cut into strips thinner than 1 mm using a zirconium nitride coated blade prior to transferring them to the Nanosurveyor instrument for X-ray experiments (Fig. 1). Thin sample strips allowed a greater range of accessible tilt angles for tomography experiments, which are normally restricted by the approximately 1 mm distance to the order-sorting aperture of the instrument (Fig. 1).

We acquired a total of 58 STXM projections with a 3 ms exposure and 50 nm step, giving a full field of view of $10 \times 5 \mu\text{m}$, with tilt angles ranging between -59° and $+40^\circ$ (Supplementary Fig. 4). Similarly, a total of 22 ptychography datasets, each consisting of 7,500 diffraction patterns, were collected using a compact Fast CCD⁵⁴. Each ptychography pattern was measured with a dwell time of 200 ms and a step size of 60 nm, giving a full field of view of $9 \times 3 \mu\text{m}$ with a pixel size of 5.5 nm (Supplementary Figs 5 and 6).

3D reconstruction of a HeLa cell's leading edge by STXM tomography. STXM projections were aligned preliminarily by cross correlation. Background was subtracted from each projection by removing the average value in an empty region of the sample. The projections were normalized to have the same total sum, as the integrated 3D density of the sample should be constant. This tilt series, acquired from a section of an extended object, imposes a unique challenge for the tomographic reconstruction, as the sample is not isolated. The field of view can drift from one acquisition to the next, but the projection-slice theorem, a fundamental assumption of tomographic reconstruction techniques, assumes that the projected density in each image results from the same 3D volume. Therefore, isolating the same density in each projection presents a challenge and was overcome in the following way: These preliminary angular alignments, translational centers, cropping, and intensity normalization parameters were used to make an initial set of projections for tomographic reconstruction.

The tomographic reconstruction was performed using a new generalized Fourier iterative reconstruction algorithm (GENFIRE)^{55,56}, originally developed for atomic electron tomography^{55,57}. GENFIRE first pads zeros to each STXM projection and calculates an oversampled Fourier slice. The series of oversampled Fourier slices are interpolated to assemble a 3D Cartesian grid of the Fourier magnitudes and phases. The use of oversampling allows for accurate interpolation of grid points in the neighborhood of each Fourier slice⁵⁸, and the remaining Fourier grid points are set as undefined. The algorithm then iterates between reciprocal and real space using the fast Fourier transform (FFT) and its inversion. In reciprocal space, the measured grid points are enforced in each iteration, while undefined points are refined during the iterative process. In real space, the negative values and the electron density outside a pre-defined support are set to zero. An error metric, defined as the normalized difference between the measured and calculated Fourier grid points, is used to monitor the convergence of the algorithm. The iterative process is then terminated when the error metric cannot be further reduced. From this

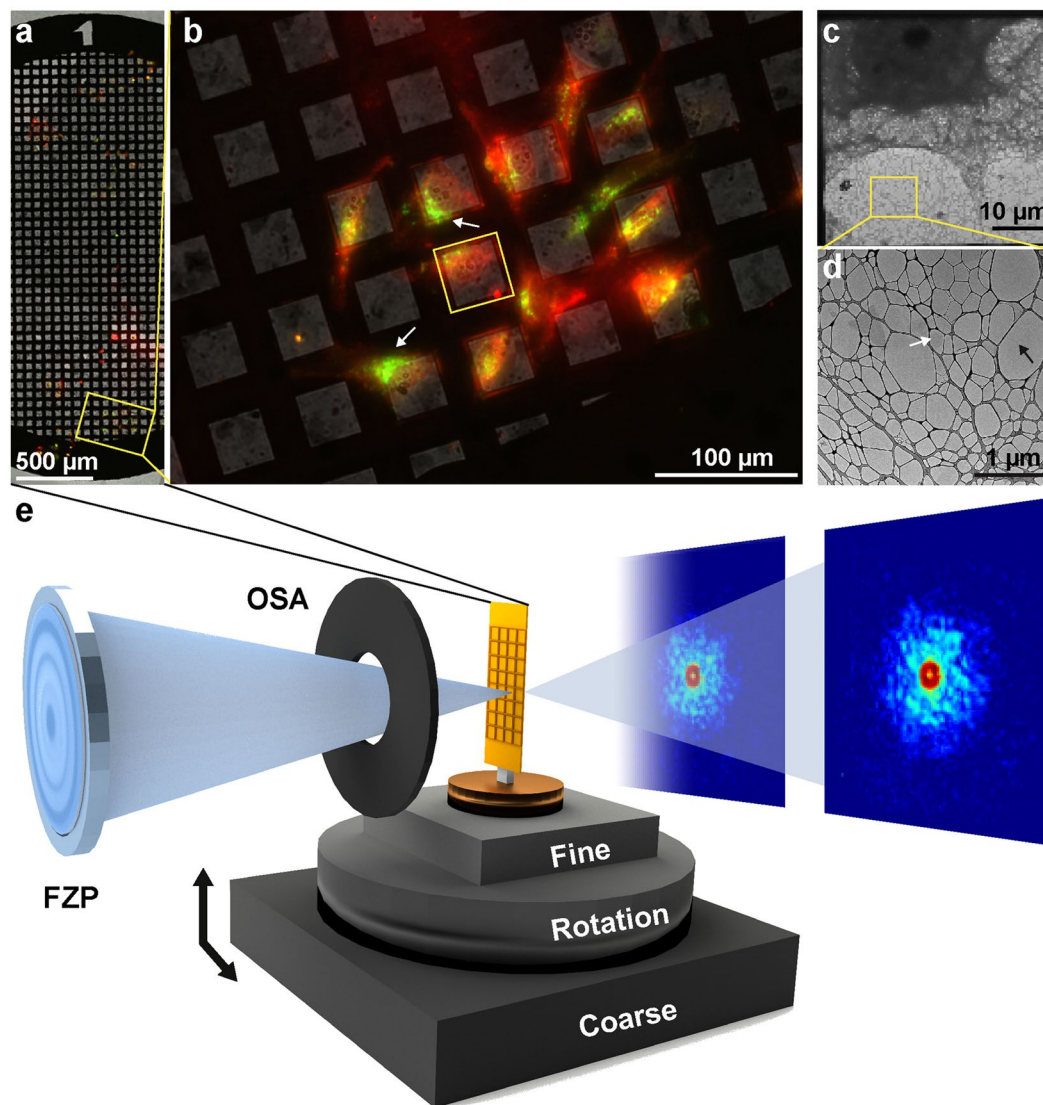


Figure 1. Experimental setup for correlative microscopy. **(a)** Composite fluorescent image of HeLa cells grown on graphene-oxide coated lacy carbon TEM grid. Cells were labeled with CMPTX (red) to facilitate tracking and treated with FITC labeled core-shell nanoparticles (green). **(b)** A magnified view of a region from this grid shows cells labeled with a tracking dye as well as fluorescent core-shell nanoparticles. White arrows point to cellular inclusions with clusters of fluorescent nanoparticles. **(c)** Electron micrograph of a portion of a HeLa cell covering an individual grid window, similar to the region highlighted in **(b)**. **(d)** Magnified view of the lacy carbon grid. The black arrow points to empty regions of the grid whilst the white arrow indicates thin layers of graphene-oxide. **(e)** Experimental setup at BL 5.3.2.1 used for STXM/ptychographic imaging with key components labeled. The X-ray beam is focused using a Fresnel zone-plate (FZP) with all but the first order blocked by an order-sorting aperture (OSA). The focused beam is rastered across the sample using high-precision stages under interferometric feedback and diffraction patterns are captured by a fast-CCD at each scan point.

preliminary 3D reconstruction, the alignment and cropping of each projection was optimized with another iterative refinement loop. For each experimentally acquired projection, the reconstructed 3D volume was back projected to a range of Euler angles about the current guess and aligned to the experimental projection by normalized cross correlation. The alignment with the maximum cross correlation yields updated values for the orientation and center of the projection. Next, a mask was made by smoothing and thresholding the best-fitting back projection, and from this mask a new input projection was obtained from the corresponding raw STXM projections. The purpose of this re-masking is to correct any inaccuracies in the initial cropping of the raw projections by utilizing the correlated information between the 3D reconstruction and each of its projections. After renormalization of the total intensity, an updated 3D reconstruction was computed from the new projections and orientation parameters. This loop was repeated until convergence of the alignment was obtained after 5 iterations. By using a Fourier based iterative process, GENFIRE produces better 3D reconstructions than other tomographic methods for a limited number of projections (Supplementary Fig. 7). A detailed comparison between GENFIRE and other 3D reconstruction methods is presented in a follow-up paper⁵⁶.

High-resolution ptychographic reconstruction. To obtain ptychographic reconstructions, 7,500 raw diffraction patterns were first corrected for differences in offset and gain among the 192 CCD readout channels using software at BL 5.3.2.1. The corrected patterns were padded with zeros to give an image pixel size that, based on the scan step, would produce an integer number of pixels between scan positions to eliminate rounding errors. The diffraction patterns were then reduced in size by binning to 128×128 pixels. To remove frames marred by readout errors, the patterns were sorted by integrated intensity and frames with excessively high or low intensity removed. Finally, an intensity-based threshold was applied to the remaining patterns and used to provide an estimate of the incoherent background scattering. This average background was subtracted from the diffraction patterns and spuriously bright pixels were set to zero.

Initial ptychographic reconstructions were performed during the experiment using the SHARP algorithm to monitor data quality⁵⁹. Reconstructions were later refined using a strip wise probe relaxation to account for artifacts introduced in some scans by the interaction of the beam with the order sorting aperture during data acquisition. This relaxation was implemented within a reconstruction scheme based on the extended ptychographic iterative engine (ePIE)³⁰. The probe reconstructed via SHARP was used as an initial guess. The probe was updated at each scan position and monitored during the course of the reconstruction. After each macro cycle of ePIE, individual probes were averaged along the axis parallel to the tilt axis. Then a weighted average was performed between strips using a 1D Gaussian kernel to promote communication between different strips and to avoid striping artifacts (Supplementary Fig. 8). For these reconstructions, a strip width of 5 pixels and Gaussian kernel of 1.5 times the strip width gave the best results.

Phase normalization of the reconstructed images is necessary before comparison of neighboring ptychographic projections. A misalignment of the diffraction pattern relative to its true center translates to a phase gradient in the reconstruction of the object in real space⁶⁰. Such a gradient can exist in both the horizontal and vertical directions, and an additional constant phase shift can exist without affecting the quality of fit of the reconstruction to the data. To perform this normalization, a pair of empty regions on either side of the sample was selected. A phase gradient in both the x- and y-axes was fit such that the standard deviation in the phase within these two regions was minimized. The constant phase term was then adjusted until the mean phase was zero within these regions.

Correlative cellular imaging using fluorescent microscopy, STXM tomography and ptychography.

We achieved high-resolution imaging of the leading edge of a HeLa cell treated with fluorescent core-shell $\text{Fe}_3\text{O}_4\text{-SiO}_2$ nanoparticles by correlative microscopy. Figure 2a shows part of an individual cell containing fluorescent nanoparticles. This same region was imaged using a coarse STXM scan to identify a smaller region of interest (Fig. 2b). A fine STXM scan was then performed on the region of interest and a tilt series of 58 STXM projections were acquired from this region. These projections were reconstructed to produce a 3D volume using GENFIRE, shown in Fig. 3a–c. A small section of the leading edge of the HeLa cell was reconstructed in its entirety. Several regions within the reconstructed 3D volume show high absorption. We attribute this high absorption to the concentrated uptake of nanoparticles into the cell.

The resolution of our 3D reconstruction is sufficient to observe membrane ruffles near the upper leading edge of the cell (Fig. 3a). Due to obstruction of our sample by the TEM grid bars during rotation, our data suffers from a large missing wedge of more than 80° . Despite this, features in our STXM reconstruction of the sample along the missing wedge direction are still well defined, allowing for precise 3D localization of the nanoparticles. Traditional tomographic reconstruction techniques, such as filtered back projection⁶¹, suffer greatly from elongation artifacts when viewed along angles corresponding to unmeasured projections due to the anisotropic resolution of reciprocal space along this direction (Supplementary Fig. 7). The clarity of our results is attributed to our reconstruction algorithm, GENFIRE, which produces quality tomographic reconstruction from a limited number of measured projections. In this particular example, views along the missing wedge provide extended context that is critical for drawing biologically relevant conclusions regarding particle internalization.

To reveal the local distribution of fluorescent $\text{Fe}_3\text{O}_4\text{-SiO}_2$ nanolabels in or near the HeLa cell, we performed 2D ptychographic CDI on regions of interest identified from the 3D reconstruction using STXM tomography (Fig. 3a–c). Our ptychographic scans produced high-resolution images that allow visualization of individual nanolabels in a correlative manner (Fig. 3d–f). The images also show, with high contrast, fine features such as membrane ruffles, filopodia, and the thin lacey carbon support (Fig. 4). The enhanced contrast in these images is facilitated by the transparency of the graphene-oxide substrate and the presence of $\text{Fe}_3\text{O}_4\text{-SiO}_2$ nanolabels. The scattering signal produced by regions of cellular material containing these nanolabels is stronger than that produced by cellular material alone. The total scattered intensity in the presence of nanolabels increases by almost an order of magnitude compared to cellular material alone or the substrate (Supplementary Fig. 9). This increased image contrast and resolution facilitates localization of the nanolabels even when embedded within the cell.

Figure 4 shows the phase and magnitude of the high-resolution ptychographic images. The phase images show fine cellular features such as membrane ruffles⁶² and filopodia⁶³ (Fig. 4a,b), while the magnitude images exhibit high contrast for the $\text{Fe}_3\text{O}_4\text{-SiO}_2$ nanolabels. Further cellular detail, such as cytoskeletal components, are however obscured due to the limited resolution and poor contrast of sub-cellular structures in a background of other cellular components in 2D projection. This combination of the phase and magnitude images allows us to determine the accurate localization of the nanolabels near the periphery of, and potentially within the HeLa cell. By imaging close to an absorption edge, we also made possible the distinction of multiple oxidation states based upon recovered phase and absorption contrast of the nanoparticles. Our magnitude images allow the precise localization of the core-shell nanoparticles (Fig. 4c,d). The phases of our ptychographic reconstructions show the presence of nanoparticle cores in two possible states, indicating potential differences due to oxidation (Fig. 4b, Supplementary Fig. 10). This remains consistent across projections and is not an artifact of reconstruction (Supplementary Fig. 11). Particles in the Fe^{3+} state, with an absorption resonance at 710 eV, will present

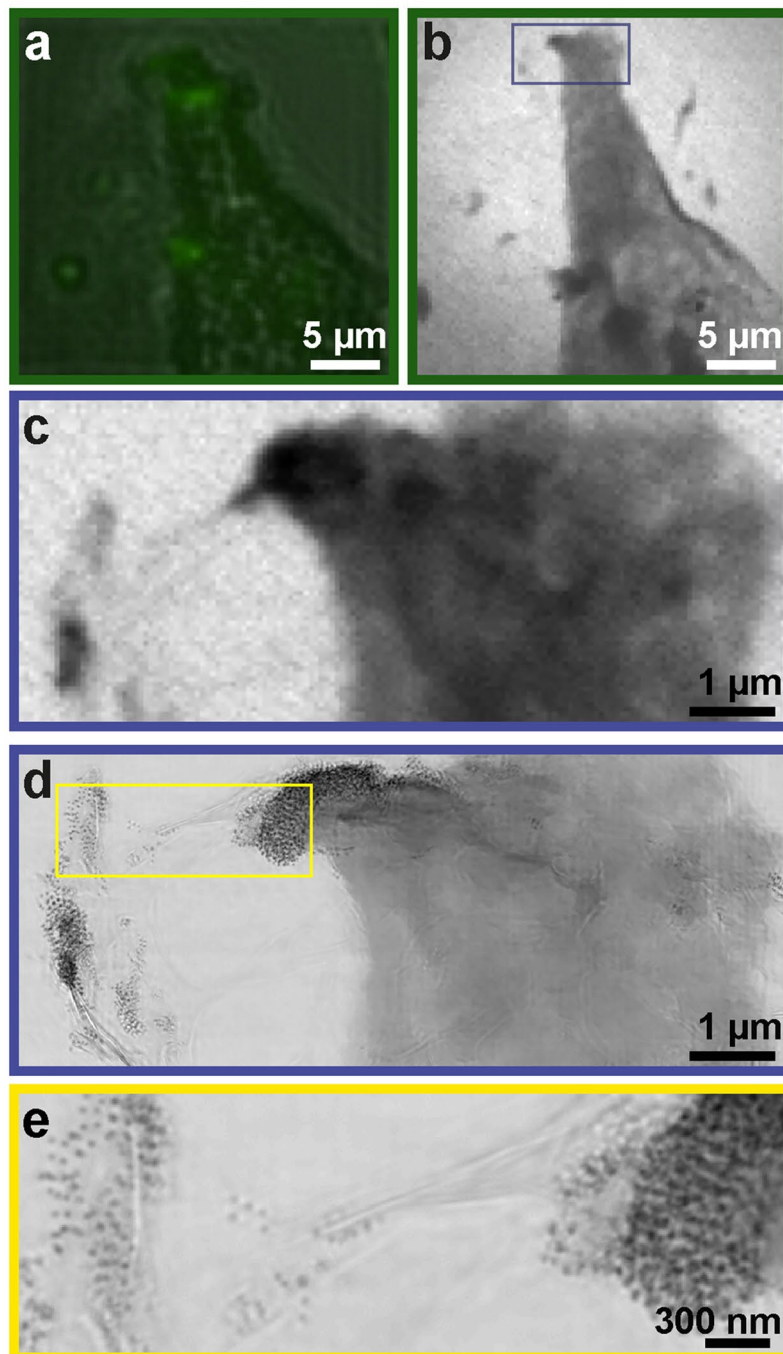


Figure 2. Localization of functionalized nanoparticles in a cellular context with correlative microscopy. (a) Part of a HeLa cell containing functionalized nanoparticles was first identified using fluorescent microscopy. (b) The same region was imaged using a coarse STXM scan. (c) A fine STXM scan was then performed on a smaller region of interest and a tomographic tilt series was acquired from this region. (d) Ptychographic imaging was performed on the same region as (c) to obtain higher resolution information. (e) Individual nanoparticles within and around the leading edge of the cell identified from the ptychographic reconstruction.

zero phase shift relative to vacuum because of the value of the real part of the refractive index at the absorption resonance. Thus, those particles appear to have an annular structure in the phase images, which highlight the presence of the silica shell having non-zero phase shift. Although the initial step of the nanoparticle synthesis a single iron oxide is expected (Fe_3O_4). During the course of the storage at room temperature and in an aqueous medium, a subset of nanoparticles may naturally oxidize from Fe_3O_4 to $\gamma\text{-Fe}_2\text{O}_3$ ⁶⁴. The iron-oxide nanoparticles then exist as a mixture of these two oxides, each with distinct oxidative states and, consequently, distinct absorption coefficients at the X-ray energies used in this experiment. This difference in the scattering properties of our iron-oxide nanolabels is evident in the phase images (Fig. 4b, Supplementary Fig. 10). While we did not focus on

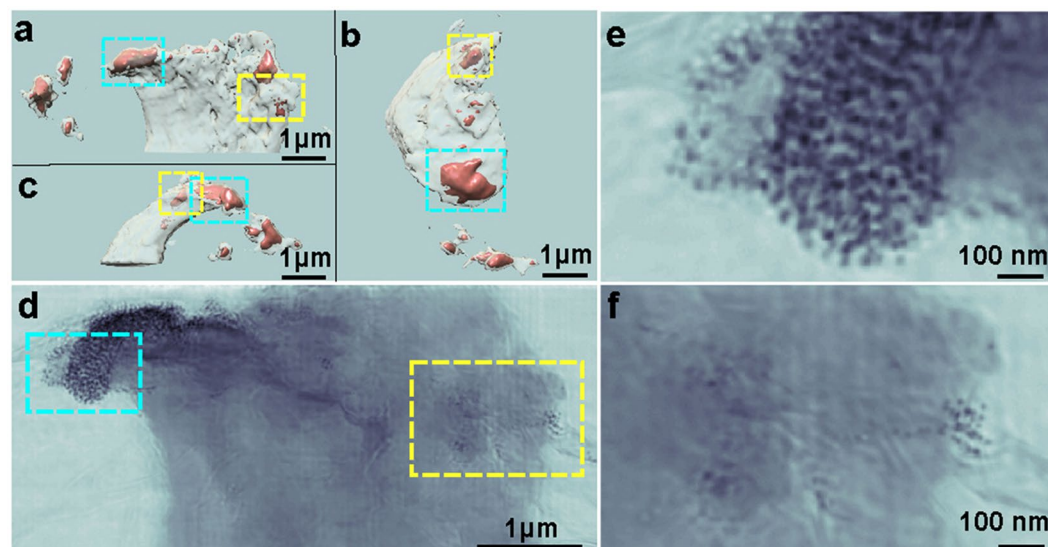


Figure 3. STXM tomography reconstruction of the leading edge of a HeLa cell. (a–c) Iso-renderings of the 3D reconstruction showing several high-density regions (orange) within the cell, viewed along the z-, minus y- and x-axes, respectively. (d) High-resolution ptychographic image confirming that the internalized high-density regions correspond to nanoparticles uptaken by the cell. (e and f) Magnified views of two regions in (d) labeled with cyan and yellow rectangles, respectively.

a spectroscopic analysis and did not image over a range of probe energies required to quantitatively measure the iron x-ray absorption coefficient of each species, our correlative technique is in principle capable of spectroscopic studies, allowing discernment of chemical species for a given nanoparticle in a cellular context.

Resolution estimation. To estimate the 3D resolution in our STXM tomogram, we compared independent reconstructions performed on two separate halves of the tilt-series. The Fourier shell correlation (FSC) between the two reconstructions is an approach commonly used in single-particle cryo-electron microscopy to estimate the 3D resolution⁶⁵. Based on the criterion of $FSC = 0.143$, we determined the 3D resolution of the STXM tomography reconstruction to be 157 nm (Supplementary Fig. 12). Next, we estimated the resolution of our ptychographic reconstructions in two ways. First, we calculated the average phase retrieval transfer function (PRTF) for all of the patterns in a particular scan⁶⁶. This gave us an upper and lower bound of the resolution as being between 25 and 15.5 nm in the full period based on a threshold of 0.5 (Supplementary Fig. 13). Second, we performed line scans across individual nanoparticles, which are well resolved and of known size (~ 73 nm with ~ 22 nm core). Line scans across the nanoparticle cores show that spacing of 3 pixels or greater can be easily distinguished, from which we estimate a resolution of ~ 16.5 nm in the full period (Supplementary Fig. 13). Taking both of these into account, we estimated the overall resolution in our images to be approximately 16.5 nm in the full period.

Radiation dose and damage. Radiation dose is fundamentally limiting to high resolution imaging experiments. Our current experiment does not benefit from the advantage of cryo-protection and therefore directly suffers from the imparted X-ray dose at 710 eV. We limited the total dose on the sample by first obtaining low-dose STXM images of the sample. Each STXM projection imparts an estimated dose of only 25 Gy, with a full tomogram imparting a dose of 1.45×10^3 Gy; this is well within the tolerable limit for our desired resolution in 3D⁶⁷. A single ptychography scan imparted a dose of 1.17×10^3 Gy per projection on the sample, similar to the total dose for the STXM tomography dataset. For this reason, while a full ptychographic tomography series was captured, we limited our analysis to a subset of measured projections suspecting that the high dose could lead to changes in sample morphology during the course of the tomography series. The zero degree projections taken before and after the ptychographic tomography series confirm these changes. In contrast, the appearance and localization of nanoparticles, which are more tolerant to dose, remains unchanged (Supplementary Fig. 14). Since the total dose imparted to this cell is within the tolerable limit for cryogenically frozen samples⁶⁷, we believe that cryo-preservation alone will facilitate similarly high-resolution results in 3D. Furthermore, cryo-preservation will alleviate some of the issues related to interpreting cellular ultra-structure as the cells will be preserved in a more natural state. The combination of higher-resolution and more faithful preservation of cellular material will significantly benefit this imaging method.

Discussions

The power of correlative microscopy lies in its potential to bridge the gap between complementary techniques, possibly expanding where a given method may be limited. Ptychographic CDI can provide high contrast images with a spatial resolution in the tens of nanometers from relatively thick, extended cells, particularly in the soft x-ray regime. As such, it is well suited to image in the regime between visible light and electron microscopy and its incorporation into correlative schemes is an area of active research^{20, 23, 39, 42}. However, biological specimens

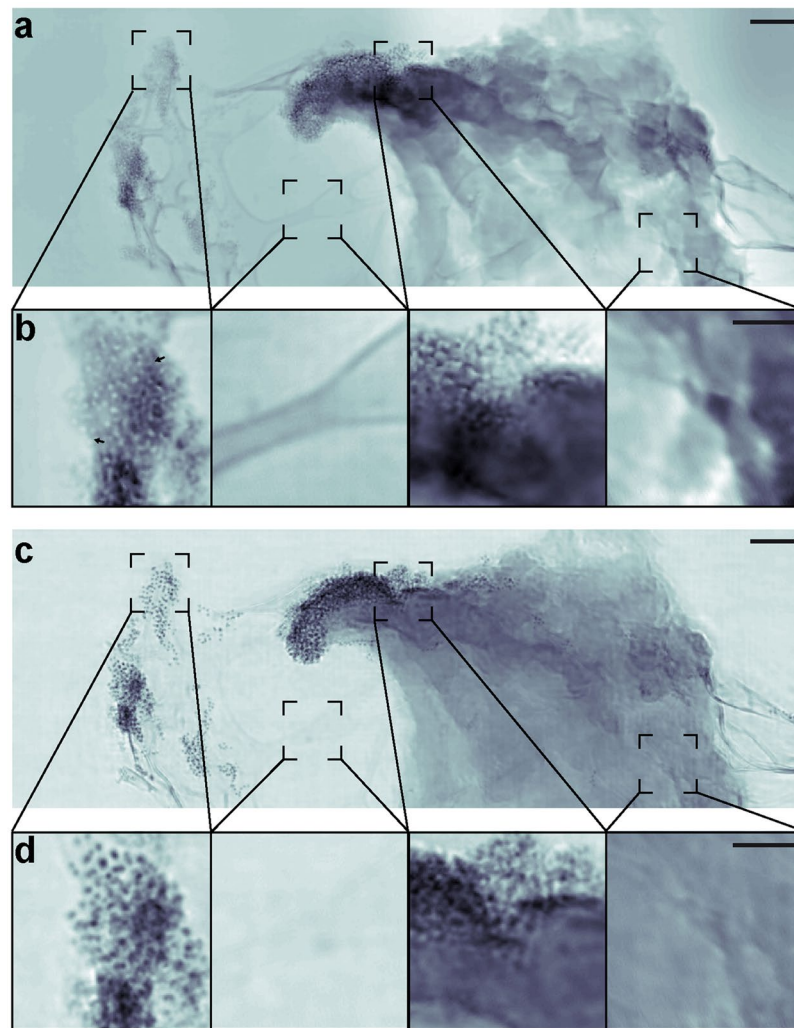


Figure 4. Phase and magnitude ptychographic images of cellular structure with functionalized nanoparticles. (a) Phase image of the ptychographic reconstruction of the leading edge of a HeLa cell labeled with core-shell nanoparticles showing high contrast for cellular features such as membrane ruffles and filipodia. (b) Magnified views of the regions outlined by dashed boxes in (a), including (left to right) nanoparticles alone, graphene-oxide coated lacey carbon, cell and nanoparticles, and cell alone. The magnified view of the nanoparticles also demonstrates the phase's ability to discern the silica shell (light gray halo around cores indicated by black arrows) as well as the two different oxidation states (light and dark cores). A larger version of this can be seen in Supplementary Fig. 13. (c) Magnitude image of the ptychographic reconstruction showing high contrast for the Fe_3O_4 cores of the nanoparticles. (d) Magnified views of the same regions shown in (b), highlighting the different features that can be sharply resolved between the phase and magnitude images. Scale bars represent 500 nm (a and c) and 200 nm (b and d).

are a challenge to image with high resolution due to their sensitivity to radiation. This sensitivity imposes strict limits on 3D imaging of cells, given the high dose required to obtain multiple projections of a single cell. STXM tomography complements ptychographic imaging, providing an opportunity to image a radiation sensitive sample in 3D with a lower dose than a single ptychography scan. In doing so, STXM tomography provides an overview of a large sample region or an entire cell in 3D prior to high-resolution ptychographic imaging. In the ideal correlative experiment, a labeled sample could be initially inspected by fluorescence microscopy to identify temporal and spatial regions of interest. Then, a STXM tilt series would provide an overview of the whole cell in 3D. Next, high-resolution ptychographic imaging would provide near molecular details that could be correlated with known cellular structures. Finally, electron microscopy could be used to provide true molecular detail. The present revolution in imaging methods across the length scales will continue to benefit such correlative approaches.

In summary, we demonstrate a proof-of-principle correlative imaging method across multiple length scales that facilitates the viewing of mammalian cells treated with functionalized fluorescent nanoparticles. Using a HeLa cell as a model system, we first identify cellular features of interest by fluorescent microscopy and correlate them in 3D via STXM tomography. We then image sub-regions of interest by ptychographic CDI with a resolution of ~ 16.5 nm. We observe fine biological features such as membrane ruffles and filipodia, and accurately

localize individual nanoparticles near the cell periphery and inside the cell. By choosing X-ray energies near the Fe L-edge, we enhance the image contrast of the core-shell Fe₃O₄-SiO₂ nanoparticles and identify them in two oxidation states. The ability to detect different oxidation states is important when the magnetic properties of the nanoparticles play a critical role in their function, such as magnetically induced heating of Fe₃O₄ nanoparticles in cancer therapy³. Although the nanoparticles were not targeted to specific biological structures in this study, incorporation of targeting moieties onto these nanoparticles is feasible and remains under investigation^{68, 69}. By incorporating cryogenic techniques, the applicability and resolution of this method can be further improved by removing the need for extensive fixation protocols⁶⁷. Higher resolution would allow the visualization of sub-cellular organelles with much greater detail, such that the interaction between nanoparticles and organelles can be better understood. The ability to perform correlative cellular imaging and localize individual nanoparticles inside intact, un-sectioned mammalian cells through a combination of fluorescent microscopy, STXM tomography and ptychography will not only yield a more comprehensive understanding of the cell as a complex biological system, but also find applications in quantifying cell-particle interactions in nanomedicine.

Methods

Synthesis and characterization of fluorescent Fe₃O₄-SiO₂ core-shell nanoparticles. The Nanoparticles (NPs) synthesis protocol was adapted from the literature^{70, 71} to generate fluorescent Fe₃O₄-SiO₂ NPs as follows. A mixture of hydrated iron oxide (FeO(OH), 0.181 g), oleic acid (3.180 g) and docosane (5.016 g) was prepared in a round flask and stirred under vacuum for 1 h. This mixture was refluxed at 350 °C for 2 h in argon atmosphere. After cooling to room temperature, the resulting black solid was dissolved in pentane, mixed with an ether:ethanol solution (2:1) and centrifuged. The decomposed organic black solution was removed and the Fe₃O₄ nanoparticles were re-dispersed in pentane and washed with the ether:ethanol solution. After centrifugation, the NPs were stabilized with oleylamine (200 μL) and dispersed in chloroform. Then, 1.75 mL of 2 M NaOH solution was added into 200 mL of a CTAB solution (25 g.L⁻¹) and this mixture was kept at room temperature for 1 h under constant stirring. This mixture was heated up to 75 °C and 7.5 mL of Fe₃O₄ NPs chloroform suspension was slowly added into the CTAB basic aqueous solution under vigorous stirring. The formation of an oil-in-water microemulsion resulted in a turbid brown solution. The resulting solution was vigorously stirred for 2 h at 75 °C resulting in a transparent black Fe₃O₄/CTAB suspension. Then, 5 mL of tetraethylorthosilicate (TEOS) and 5 mL of FTIC-APTES (10 mg of fluorescein isothiocyanate [FITC] was reacted with 250 μL of 3-aminopropyltriethoxysilane [APTES] in 10 mL of ethanol for 2 h) were added to the Fe₃O₄/CTAB suspension and stirred for 3 h at 75 °C to obtain the fluorescent Fe₃O₄-SiO₂ NPs. These nanoparticles were washed 3 times with ethanol to remove the unreacted species and then dispersed in 20 mL of ethanol. The remaining sample was refluxed twice with an alcoholic solution of ammonium nitrate (6 g.L⁻¹, NH₄NO₃) at 50 °C to remove CTAB from the NPs pores. After washing them twice with ethanol, the fluorescent Fe₃O₄-SiO₂ NPs were dried under airflow for a few hours. All chemicals used along this protocol were purchased from Sigma-Aldrich. The morphology of the nanoparticles was investigated on a JEM 2100 JEOL transmission electron microscope. The samples were evaluated by placing a highly diluted ethanolic nanoparticle suspension on regular TEM grids. The corresponding particle size distribution was obtained by measuring the core and the nanoparticle diameters of more than 400 particles.

Preparation of graphene-oxide coated lacey carbon TEM grids. All the biological assays were performed on a substrate composed of a Gold 400 Mesh TEM grid with lacey carbon. Additionally, a graphene layer was deposited on top of the lacey carbon to allow the culture of adherent cells on the TEM grid. The graphene layer was created by deposition of graphene oxide on the TEM grid by the 'drop-casting' method. A solution composed of 50% ethanol in double distilled water containing graphene oxide sheets is dropped on top of the TEM grid. After drying, TEM grids were annealed at 150 °C for 30 min creating a homogeneous surface. This process also guarantees sterilization of the TEM grid. The prepared TEM grid was submerged in Dulbecco's modified Eagle's medium (DMEM) supplemented with 10% fetal calf serum and placed on the bottom of a cell culture dish. Next, suspended HeLa cells are dropped on the solution and maintained at 37 °C in a 5% CO₂ atmosphere for 24 h. This procedure allows the cells to adhere to and grow on the graphene.

Nanoparticle treatment. The HeLa cells that had adhered to the graphene TEM grid were treated with core-shell nanoparticles. The nanoparticles were suspended in distilled water (100 μg/ml), and three fifty microliter drops were added to five milliliters of solution and dispersed gently. Cells were exposed to nanoparticles for 30 min, the medium was removed and the cells were gently washed with medium. Finally, the cells were fixed with paraformaldehyde.

References

- De Jong, W. H. & Borm, P. J. Drug delivery and nanoparticles: Applications and hazards. *Int J Nanomedicine* **3**, 133–149 (2008).
- Wang, A. Z., Langer, R. & Farokhzad, O. C. Nanoparticle Delivery of Cancer Drugs. *Annu. Rev. Med.* **63**, 185–198 (2012).
- Pisanic, T. R., Blackwell, J. D., Shubayev, V. I., Fiñones, R. R. & Jin, S. Nanotoxicity of iron oxide nanoparticle internalization in growing neurons. *Biomaterials* **28**, 2572–2581 (2007).
- Conesa, J. J. *et al.* Intracellular nanoparticles mass quantification by near-edge absorption soft X-ray nanotomography. *Sci. Rep.* **6**, 22354 (2016).
- Miao, J., Charalambous, P., Kirz, J. & Sayre, D. Extending the methodology of X-ray crystallography to allow imaging of micrometre-sized non-crystalline specimens. *Nature* **400**, 342–344 (1999).
- Robinson, I. K., Vartanyants, I. A., Williams, G. J., Pfeifer, M. A. & Pitney, J. A. Reconstruction of the Shapes of Gold Nanocrystals Using Coherent X-Ray Diffraction. *Phys. Rev. Lett.* **87** (2001).
- Miao, J. *et al.* Imaging whole Escherichia coli bacteria by using single-particle x-ray diffraction. *Proc. Natl. Acad. Sci. USA* **100**, 110–112 (2003).

8. Miao, J., Chapman, H. N., Kirz, J., Sayre, D. & Hodgson, K. O. Taking X-ray diffraction to the limit: macromolecular structures from femtosecond X-ray pulses and diffraction microscopy of cells with synchrotron radiation. *Annu Rev Biophys Biomol Struct* **33**, 157–176 (2004).
9. Shapiro, D. *et al.* Biological imaging by soft x-ray diffraction microscopy. *Proc. Natl. Acad. Sci. USA*. **102**, 15343–15346 (2005).
10. Sandberg, R. L. *et al.* Lensless Diffractive Imaging Using Tabletop Coherent High-Harmonic Soft-X-Ray Beams. *Phys. Rev. Lett.* **99**, 98103 (2007).
11. Song, C. *et al.* Quantitative imaging of single, unstained viruses with coherent x rays. *Phys. Rev. Lett.* **101**, 158101 (2008).
12. Sandberg, R. L. *et al.* High numerical aperture tabletop soft x-ray diffraction microscopy with 70-nm resolution. *Proc. Natl. Acad. Sci. USA*. **105**, 24–27 (2008).
13. Huang, X. *et al.* Soft X-ray diffraction microscopy of a frozen hydrated yeast cell. *Phys. Rev. Lett.* **103**, 198101 (2009).
14. Lima, E. *et al.* Cryogenic X-Ray Diffraction Microscopy for Biological Samples. *Phys. Rev. Lett.* **103**, 198102 (2009).
15. Nishino, Y., Takahashi, Y., Imamoto, N., Ishikawa, T. & Maeshima, K. Three-dimensional visualization of a human chromosome using coherent X-ray diffraction. *Phys. Rev. Lett.* **102**, 18101 (2009).
16. Jiang, H. *et al.* Quantitative 3D imaging of whole, unstained cells by using X-ray diffraction microscopy. *Proc. Natl. Acad. Sci. USA* **107**, 11234–11239 (2010).
17. Nelson, J. *et al.* High-resolution x-ray diffraction microscopy of specifically labeled yeast cells. *Proc. Natl. Acad. Sci. USA* **107**, 7235–7239 (2010).
18. Seibert, M. M. *et al.* Single mimivirus particles intercepted and imaged with an X-ray laser. *Nature* **470**, 78–81 (2011).
19. Nam, D. *et al.* Imaging fully hydrated whole cells by coherent x-ray diffraction microscopy. *Phys. Rev. Lett.* **110**, 98103 (2013).
20. Song, C. *et al.* Analytic 3D Imaging of Mammalian Nucleus at Nanoscale Using Coherent X-Rays and Optical Fluorescence Microscopy. *Biophys. J* **107**, 1074–1081 (2014).
21. Hantke, M. F. *et al.* High-throughput imaging of heterogeneous cell organelles with an X-ray laser. *Nat Photon* **8**, 943–949 (2014).
22. Rodriguez, J. A. *et al.* Three-dimensional coherent X-ray diffractive imaging of whole frozen-hydrated cells. *IUCr J* **2**, 575–583 (2015).
23. Takayama, Y. & Yonekura, K. Cryogenic coherent X-ray diffraction imaging of biological samples at SACLA: a correlative approach with cryo-electron and light microscopy. *Acta Crystallographica Section A Foundations and Advances* **72**, 179–189 (2016).
24. Gallagher-Jones, M., Rodriguez, J. A. & Miao, J. Frontier methods in coherent X-ray diffraction for high-resolution structure determination. *Quarterly Reviews of Biophysics* **49** (2016).
25. Miao, J., Ishikawa, T., Robinson, I. K. & Murnane, M. M. Beyond crystallography: Diffractive imaging using coherent x-ray light sources. *Science* **348**, 530–535 (2015).
26. Rodenburg, J. M. *et al.* Hard-X-Ray Lensless Imaging of Extended Objects. *Phys. Rev. Lett.* **98**, 34801 (2007).
27. Thibault, P. *et al.* High-resolution scanning x-ray diffraction microscopy. *Science* **321**, 379–382 (2008).
28. de la Cuesta, F. B. *et al.* Coherent X-ray diffraction from collagenous soft tissues. *Proc. Natl. Acad. Sci. USA* **106**, 15297–15301 (2009).
29. Dierolf, M. *et al.* Ptychographic X-ray computed tomography at the nanoscale. *Nature* **467**, 436–439 (2010).
30. Maiden, A. M. & Rodenburg, J. M. An improved ptychographical phase retrieval algorithm for diffractive imaging. *Ultramicroscopy* **109**, 1256–1262 (2009).
31. Giewekemeyer, K. *et al.* Quantitative biological imaging by ptychographic x-ray diffraction microscopy. *Proc. Natl. Acad. Sci. USA* **107**, 529–534 (2010).
32. Wilke, R. N. *et al.* Hard X-ray imaging of bacterial cells: nano-diffraction and ptychographic reconstruction. *Opt Express* **20**, 19232–19254 (2012).
33. Takahashi, Y. *et al.* High-resolution and high-sensitivity phase-contrast imaging by focused hard x-ray ptychography with a spatial filter. *Appl. Phys. Lett.* **102**, 94102 (2013).
34. Maiden, A. M., Morrison, G. R., Kaulich, B., Gianoncelli, A. & Rodenburg, J. M. Soft X-ray spectromicroscopy using ptychography with randomly phased illumination. *Nature Communications* **4**, 1669 (2013).
35. Seaberg, M. D. *et al.* Tabletop nanometer extreme ultraviolet imaging in an extended reflection mode using coherent Fresnel ptychography. *Optica* **1**, 39 (2014).
36. Kimura, T. *et al.* Imaging live cell in micro-liquid enclosure by X-ray laser diffraction. *Nat Commun* **5**, 3052 (2014).
37. Giewekemeyer, K. *et al.* Tomography of a Cryo-immobilized Yeast Cell Using Ptychographic Coherent X-Ray Diffractive Imaging. *Biophysical Journal* **109**, 1986–1995 (2015).
38. Zhang, B. *et al.* High contrast 3D imaging of surfaces near the wavelength limit using tabletop EUV ptychography. *Ultramicroscopy* **158**, 98–104 (2015).
39. Deng, J. *et al.* Simultaneous cryo X-ray ptychographic and fluorescence microscopy of green algae. *Proc. Natl. Acad. Sci. USA* **112**, 2314–2319 (2015).
40. Diaz, A. *et al.* Three-dimensional mass density mapping of cellular ultrastructure by ptychographic X-ray nanotomography. *Journal of Structural Biology* **192**, 461–469 (2015).
41. Zanette, I. *et al.* Ptychographic X-ray nanotomography quantifies mineral distributions in human dentine. *Scientific Reports* **5**, 9210 (2015).
42. Jones, M. W. M., Elgass, K. D., Junker, M. D., de Jonge, M. D. & van Riessen, G. A. Molar concentration from sequential 2-D water-window X-ray ptychography and X-ray fluorescence in hydrated cells. *Scientific Reports* **6**, 24280 (2016).
43. Dierolf, M. *et al.* Ptychographic coherent diffractive imaging of weakly scattering specimens. *New J. Phys.* **12**, 35017 (2010).
44. Zhu, Y., Cai, W., Piner, R. D., Velamakanni, A. & Ruoff, R. S. Transparent self-assembled films of reduced graphene oxide platelets. *Appl. Phys. Lett.* **95**, 103104 (2009).
45. Pantelic, R. S., Meyer, J. C., Kaiser, U., Baumeister, W. & Plitzko, J. M. Graphene oxide: A substrate for optimizing preparations of frozen-hydrated samples. *J. Struct. Biol* **170**, 152–156 (2010).
46. Park, J. *et al.* Direct Observation of Wet Biological Samples by Graphene Liquid Cell Transmission Electron Microscopy. *Nano Letters* **15**, 4737–4744 (2015).
47. Wojcik, M., Hauser, M., Li, W., Moon, S. & Xu, K. Graphene-enabled electron microscopy and correlated super-resolution microscopy of wet cells. *Nat Commun* **6**, 7384 (2015).
48. Mohanty, N., Fahrenholtz, M., Nagaraja, A., Boyle, D. & Berry, V. Impermeable Graphenic Encasement of Bacteria. *Nano Letters* **11**, 1270–1275 (2011).
49. Jeong, J.-T. *et al.* Effect of graphene oxide ratio on the cell adhesion and growth behavior on a graphene oxide-coated silicon substrate. *Sci. Rep.* **6** (2016).
50. Kalbacova, M., Broz, A., Kong, J. & Kalbac, M. Graphene substrates promote adherence of human osteoblasts and mesenchymal stromal cells. *Carbon* **48**, 4323–4329 (2010).
51. Lee, W. C. *et al.* Origin of Enhanced Stem Cell Growth and Differentiation on Graphene and Graphene Oxide. *ACS Nano* **5**, 7334–7341 (2011).
52. Garcia-Alegria, E. *et al.* Graphene Oxide promotes embryonic stem cell differentiation to haematopoietic lineage. *Sci. Rep.* **6** (2016).
53. Shapiro, D. A. *et al.* Chemical composition mapping with nanometre resolution by soft X-ray microscopy. *Nat Photon* **8**, 765–769 (2014).
54. Denes, P., Doering, D., Padmore, H. A., Walder, J.-P. & Weizeorick, J. A fast, direct x-ray detection charge-coupled device. *Rev. Sci. Instrum* **80**, 83302 (2009).

55. Yang, Y. *et al.* Deciphering chemical order/disorder and material properties at the single-atom level. *Nature* **542**, 75–79 (2017).
56. Pryor, A. Jr. *et al.* GENFIRE: A generalized Fourier iterative reconstruction algorithm for high-resolution 3D imaging. arXiv:1706.04309 (2017).
57. Miao, J., Ercius, P. & Billinge, S. J. L. Atomic electron tomography: 3D structures without crystals. *Science* **353**(6306), aaf2157–aaf2157 (2016).
58. Miao, J., Sayre, D. & Chapman, H. N. Phase retrieval from the magnitude of the Fourier transforms of nonperiodic objects. *J. Opt. Soc. Am. A* **15**, 1662 (1998).
59. Marchesini, S. *et al.* SHARP: a distributed GPU-based ptychographic solver. *J Appl Cryst* **49**, 1245–1252 (2016).
60. Guizar-Sicairos, M. *et al.* Phase tomography from x-ray coherent diffractive imaging projections. *Optics express* **19**, 21345–21357 (2011).
61. Radermacher, M. in *Electron Tomography* (ed. Frank, J.) 245–273 doi:10.1007/978-0-387-69008-7_9 (Springer New York, 2007).
62. Borm, B., Requardt, R. P., Herzog, V. & Kirfel, G. Membrane ruffles in cell migration: indicators of inefficient lamellipodia adhesion and compartments of actin filament reorganization. *Experimental Cell Research* **302**, 83–95 (2005).
63. Albuschies, J. & Vogel, V. The role of filopodia in the recognition of nanotopographies. *Sci. Rep* **3**, 1658 (2013).
64. Cornell, R. M. & Schwertmann, U. *The Iron Oxides*. (Wiley-VCH Verlag GmbH & Co. KGaA, 2003).
65. Frank, J. In *Three-Dimensional Electron Microscopy of Macromolecular Assemblies* 182–246 (Academic Press, 1996).
66. Chapman, H. N. *et al.* High-resolution ab initio three-dimensional x-ray diffraction microscopy. *J. Opt. Soc. Am. A* **23**, 1179–1200 (2006).
67. Howells, M. R. *et al.* An assessment of the resolution limitation due to radiation-damage in X-ray diffraction microscopy. *J. Electron Spectrosc. Relat. Phenom.* **170**, 4–12 (2009).
68. Natarajan, S. K. & Selvaraj, S. Mesoporous silica nanoparticles: importance of surface modifications and its role in drug delivery. *RSC Adv.* **4**, 14328–14334 (2014).
69. Hwang, A. A., Lu, J., Tamanoi, F. & Zink, J. I. Functional Nanovalves on Protein-Coated Nanoparticles for *in vitro* and *in vivo* Controlled Drug Delivery. *Small* **11**, 319–328 (2015).
70. Yu, W. W., Falkner, J. C., Yavuz, C. T. & Colvin, V. L. Synthesis of monodisperse iron oxide nanocrystals by thermal decomposition of iron carboxylate salts. *Chem. Commun.* 2306–2307, doi:10.1039/B409601K (2004).
71. Kim, J. *et al.* Multifunctional Uniform Nanoparticles Composed of a Magnetite Nanocrystal Core and a Mesoporous Silica Shell for Magnetic Resonance and Fluorescence Imaging and for Drug Delivery. *Angewandte Chemie* **120**, 8566–8569 (2008).

Acknowledgements

We gratefully acknowledge the support of NVIDIA Corporation with the donation of the Quadro K5200 GPU used for this research. This work was supported by STROBE: A National Science Foundation Science & Technology Center under Grant No. DMR 1548924. J.M. thanks the support by the DARPA PULSE program through a grant from AMRDEC and the Office of Basic Energy Sciences of the US Department of Energy (DE-SC0010378). C.S.B.D. would like to acknowledge the partial support by Capes (CNPq 206124/2014-7). M.B.C. thanks the support of Fapesp (2013/22322-2) and K.B. acknowledges the support of Capes (CSF-PAJT - 88887.091023/2014-00). Soft X-ray ptychographic microscopy was carried out at beamline 5.3.2.1 at the Advanced Light Source, which is supported by the Director, Office of Science, and Office of Basic Energy Sciences, of the U.S. Department of Energy under Contract No. DE-AC02-05CH11231. J.A.R. is supported as a Searle Scholar and a Beckman Young Investigator. This work is partially supported by the Center for Applied Mathematics for Energy Research Applications (CAMERA), which is a partnership between Basic Energy Sciences and Advanced Scientific Computing Research at the U.S. Department of Energy.

Author Contributions

J.M. directed the research; J.M., M.B.C., J.A.R. and D.S. designed the experiment. M.G.-J., C.S.B.D., A.P.Jr., K.B., L.Z., Y.H.L., D.S. and J.A.R. conducted the experiments; M.G.-J., C.S.B.D., A.P.Jr., J.A.R. and J.M. analyzed the data, performed reconstructions and interpreted the results. M.G.-J., C.S.B.D., A.P.Jr., J.A.R. and J.M. wrote the manuscript with contributions from all authors.

Additional Information

Supplementary information accompanies this paper at doi:10.1038/s41598-017-04784-5

Competing Interests: The authors declare that they have no competing interests.

Publisher's note: Springer Nature remains neutral with regard to jurisdictional claims in published maps and institutional affiliations.



Open Access This article is licensed under a Creative Commons Attribution 4.0 International License, which permits use, sharing, adaptation, distribution and reproduction in any medium or format, as long as you give appropriate credit to the original author(s) and the source, provide a link to the Creative Commons license, and indicate if changes were made. The images or other third party material in this article are included in the article's Creative Commons license, unless indicated otherwise in a credit line to the material. If material is not included in the article's Creative Commons license and your intended use is not permitted by statutory regulation or exceeds the permitted use, you will need to obtain permission directly from the copyright holder. To view a copy of this license, visit <http://creativecommons.org/licenses/by/4.0/>.

© The Author(s) 2017