

# Catalysis Science & Technology

Accepted Manuscript

This article can be cited before page numbers have been issued, to do this please use: M. Schulte, S. Weber, L. Klag, J. Grunwaldt and T. L. Sheppard, *Catal. Sci. Technol.*, 2022, DOI: 10.1039/D2CY00972B.



This is an Accepted Manuscript, which has been through the Royal Society of Chemistry peer review process and has been accepted for publication.

Accepted Manuscripts are published online shortly after acceptance, before technical editing, formatting and proof reading. Using this free service, authors can make their results available to the community, in citable form, before we publish the edited article. We will replace this Accepted Manuscript with the edited and formatted Advance Article as soon as it is available.

You can find more information about Accepted Manuscripts in the [Information for Authors](#).

Please note that technical editing may introduce minor changes to the text and/or graphics, which may alter content. The journal's standard [Terms & Conditions](#) and the [Ethical guidelines](#) still apply. In no event shall the Royal Society of Chemistry be held responsible for any errors or omissions in this Accepted Manuscript or any consequences arising from the use of any information it contains.

Cite this: DOI: 00.0000/xxxxxxxxxx

Synchrotron PXRD deconvolutes nickel particle and support changes in Ni/ZrO<sub>2</sub> methanation catalysts<sup>†</sup>Mariam L. Schulte,<sup>a,b,‡</sup> Sebastian Weber,<sup>a,b,‡</sup> Linda Klag,<sup>a</sup> Jan-Dierk Grunwaldt<sup>a,b</sup> and Thomas L. Sheppard<sup>†\*a,b</sup>Received Date  
Accepted Date

DOI: 00.0000/xxxxxxxxxx

Understanding catalyst deactivation is important for future knowledge-based design of catalysts with improved stability. Deactivation by thermal aging is particularly relevant for exothermic reactions, here demonstrated with CO<sub>2</sub> methanation using nickel-based catalysts. A series of five Ni/ZrO<sub>2</sub> catalysts is studied which differ by calcination temperature of the ZrO<sub>2</sub> support prior to Ni deposition, leading to different textural properties of the support. Artificial thermal aging of the Ni/ZrO<sub>2</sub> series is then performed and monitored by *operando* synchrotron-based powder X-ray diffraction (SPXRD). This reveals the dependence of catalyst stability on the support properties and shows that different deactivation mechanisms take place. Catalyst deactivation is mainly correlated either to changes of the support or to changes in nickel crystallite size, depending on the calcination temperature of the support before nickel deposition. By preparing a targeted series of supports with different textural properties, it is possible to deconvolute these effects. *Operando* SPXRD is shown as a powerful tool to follow both textural and structural changes during thermal catalyst deactivation, which is mostly only performed by *post mortem ex situ* analysis.

## 1 Introduction

Exothermic heterogeneous catalytic processes are challenging in regard to safety aspects and catalyst stability. Reliable heat management is necessary in order to maintain safe operation under process conditions. Thermal catalyst deactivation can be classified in three effects: (i) loss of active sites due to metal particle agglomeration; (ii) collapse of support structure leading to a decrease in surface area or porosity changes; (iii) formation of undesired alloy or mixed metal oxide phases by reaction of the active phase and catalyst support.<sup>1,2</sup> Distinguishing between these three effects for a given chemical process is difficult, since all effects can occur simultaneously and in addition to other types of deactivation, e.g., poisoning or fouling. Detailed investigation of temperature-induced catalyst deactivation is needed in order to unravel the impact of each degradation process.

A suitable exothermic model reaction for studying catalyst deactivation is CO<sub>2</sub> hydrogenation to CH<sub>4</sub>. CO<sub>2</sub> methanation involves significant heat generation and therefore forms distinct tem-

perature gradients (hot-spots),<sup>3</sup> which have been simulated in fixed-bed reactors<sup>4</sup> and observed experimentally using spatially-resolved measurements.<sup>5</sup> A wide range of catalysts have been investigated for CO<sub>2</sub> methanation and the reviews of Aziz *et al.*<sup>6</sup> and Frontera *et al.*<sup>7</sup> provide a comprehensive overview on catalyst development. Ni-based catalysts are most frequently studied, due to relatively low cost of the metal and high activity and selectivity in CO and CO<sub>2</sub> methanation.<sup>7</sup>

Possible deactivation pathways for CO<sub>2</sub> methanation catalysts have also been reviewed.<sup>8–10</sup> These mainly include fouling/coking, poisoning, (redox) reaction of the active metal sites, and thermal degradation. Although coking is discussed as a deactivation phenomena for CO<sub>2</sub> methanation, it is more relevant for CO or mixed CO/CO<sub>2</sub> methanation where the Boudouard reaction favors coke formation from CO-containing feed.<sup>8–11</sup> Poisoning is mainly relevant for applications of CO<sub>2</sub> methanation associated with coal or biomass based CO<sub>2</sub> feeds, and can be attributed to sulfur species present in the feed.<sup>8,10,12</sup> Changes in oxidation state of active metallic Ni sites are discussed in several studies especially in terms of fluctuating feeds such as H<sub>2</sub> dropout scenarios, which can lead to irreversible or partially irreversible Ni oxidation to NiO.<sup>13–17</sup> However, the above deactivation pathways can generally be reversed by reactivation, compared to thermal degradation,<sup>18</sup> which is a permanent feature due to the exothermic nature of the reaction.

As an example, long-term tests were reported for co-precipitated

<sup>a</sup> Institute for Chemical Technology and Polymer Chemistry, Karlsruhe Institute of Technology (KIT), Engesserstr. 20, 76131 Karlsruhe, Germany. Tel: +4972160847989; E-mail: thomas.sheppard@kit.edu

<sup>b</sup> Institute of Catalysis Research and Technology, Karlsruhe Institute of Technology (KIT), Hermann-von-Helmholtz Platz 1, 76344 Eggenstein-Leopoldshafen, Germany.

<sup>†</sup> Electronic Supplementary Information (ESI) available: [details of any supplementary information available should be included here]. See DOI: 00.0000/00000000.

<sup>‡</sup> Both authors contributed equally.



Ni/Al<sub>2</sub>O<sub>3</sub> catalysts at reaction temperatures of around 380–400 °C by Abello *et al.*<sup>19</sup> and Koschany *et al.*<sup>20</sup>, where a slow decline in activity was observed over several hundreds of hours of operation, eventually leading to constant conversion after 320 h. This was traced back to gradual sintering of Ni particles, which Beierlein *et al.*<sup>18</sup> studied in more detail during rapid ageing tests by exposing the catalysts to hydrothermal conditions at 600 to 700 °C. They observed increasing Ni particle sizes and additional changes in the support structure on thermal aging.<sup>18</sup> In addition, potential deactivation by an oxidized or restructured Ni surface was discussed.<sup>18</sup> Similar findings were reported by Mebrahtu *et al.*<sup>21</sup> showing the influence of nickel hydroxide-like species formed under hydrothermal conditions, resulting in enhanced formation of mixed oxides or sintering. Ewald *et al.*<sup>22</sup> attributed the long term deactivation of co-precipitated Ni/Al<sub>2</sub>O<sub>3</sub> catalysts to Ni particle sintering, textural changes, i.e., loss of surface area and reduction of medium basic sites, which is associated with changes of the CO<sub>2</sub> adsorption capacity. In addition, they report the potential Ni incorporation into  $\gamma$ -Al<sub>2</sub>O<sub>3</sub> or beginning formation of mixed oxide phases such as NiAl<sub>2</sub>O<sub>4</sub>.<sup>22</sup>

Both the support and the metal nanoparticles can change upon (hydro)thermal ageing at the same time. Hence, the challenge is to deconvolute the many different deactivation pathways which may occur, e.g., sintering, oxidation, composite formation. *Post mortem* or *ex situ* analysis can hardly reveal the stage at which deactivation happens. This requires *in situ* or *operando* measurements sensitive to the aforementioned sample changes.<sup>23–25</sup> It should be noted that there are mainly two different mechanisms proposed for CO<sub>2</sub> methanation,<sup>7,8,10</sup> where aside from Ni metal as the active species, the support might also be involved in the reaction by adsorption of CO<sub>2</sub> as part of an associative mechanism. In the current study, we present a systematic examination of deactivation effects of Ni/ZrO<sub>2</sub> methanation catalysts by *operando* synchrotron-based powder X-ray diffraction (SPXRD) during artificial thermal aging. The aim is to deconvolute contributions of support and Ni nanoparticle changes to catalyst deactivation. A designed model series of different Ni/ZrO<sub>2</sub> catalysts was prepared using the same ZrO<sub>2</sub> support, which was calcined at various temperatures prior to Ni deposition. Thus, distinct thermal stability and textural properties of the supports can be achieved, while similar Ni particles are initially present on each support, as illustrated in Figure 1. The Ni/ZrO<sub>2</sub> system with the monoclinic ZrO<sub>2</sub> polymorph was chosen as a typically employed combination for methanation catalysts<sup>6,7</sup> and because ZrO<sub>2</sub> exhibits a more defined crystalline structure compared to most often applied  $\gamma$ -Al<sub>2</sub>O<sub>3</sub> supports. Furthermore, monoclinic ZrO<sub>2</sub> is typically a non-reducible support and mixed oxide formation with Ni is less likely compared to  $\gamma$ -Al<sub>2</sub>O<sub>3</sub>. Therefore, it is an ideal model support system to study thermally induced catalyst changes, as the expected changes are mainly related to textural properties. *Operando* SPXRD measurements were used to reveal structural and textural changes of the support and Ni nanoparticles based on crystallite size analysis at different deactivation temperatures during CO<sub>2</sub> methanation. In this way, the distinct contributions of active metal or support changes on catalysts deactivation can be deconvoluted. This allows to derive structure-deactivation re-

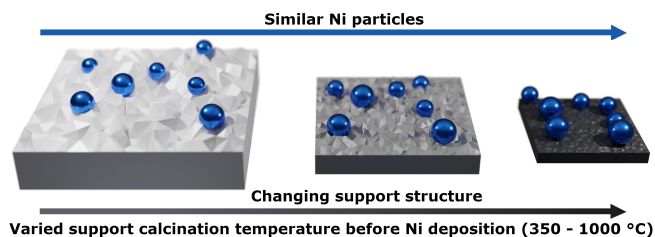


Fig. 1 Illustration of the initially prepared Ni/ZrO<sub>2</sub> catalysts applied in artificial thermal aging experiments. Before Ni deposition the ZrO<sub>2</sub> support was calcined at different temperatures to alter the support textural properties (surface area, pore volume) and to vary the thermal stability of the support. Ni blue, ZrO<sub>2</sub> grey, the grey color gradient illustrates changing textural properties of the support.

lationships for the Ni/ZrO<sub>2</sub> catalyst series. Therefore, this study presents an approach to distinguish changes occurring in different components of the solid catalyst during artificial thermal deactivation cycles, using a single method, i.e., *in situ/operando* SPXRD. The catalysts used in this study may be considered as model systems for the purpose of monitoring deactivation, without optimization regarding their catalytic performance.

## 2 Experimental

### 2.1 Catalyst synthesis

Ni/ZrO<sub>2</sub> catalysts were prepared using the homogeneous deposition-precipitation method adapted from Mutz *et al.*<sup>26</sup> As support material commercial ZrO<sub>2</sub> pellets (Saint-Gobain) were crushed and thermally aged at different temperatures (indicated in abbreviation) for 12 h (10 °C min<sup>-1</sup>) resulting in samples Z350, Z500, Z650, Z800 and Z1000. The calcined powders were finely granulated to a mesh size  $\leq 100 \mu\text{m}$  and 1.6 g of each powder was suspended in an aqueous solution (230 mL) of 2.002 g Ni(NO<sub>3</sub>)<sub>2</sub>·6H<sub>2</sub>O (Merck 99%) with 2.906 g of urea (7 eq., Carl Roth, crystalline, 99.6%), which corresponds to an aimed Ni loading of 20 wt.%. The suspension was stirred for 1 h at room temperature (pH = 4) and afterwards heated to 90 °C. The mixture was heated for 18 h under reflux, cooled to room temperature, then stirred for another 1 h (pH = 8). The solid was filtered off, washed three times with 100 mL of deionized water and dried overnight at 90 °C. Subsequently, the catalysts were calcined at 500 °C for 4 h (10 °C min<sup>-1</sup>).

### 2.2 Laboratory catalyst characterization

Catalyst composition was determined by inductively coupled plasma optical emission spectroscopy (ICP-OES) with a Perkin Elmer Optima 8000 instrument equipped a Scott/crossflow sample injection system.

Specific surface area ( $A_{\text{BET}}$ ) and pore volume ( $V_p$ ) were obtained from N<sub>2</sub> physisorption using a BELSORP-mini II system (Microtrac) with the method of Brunauer, Emmet and Teller (BET).<sup>27</sup> Prior to the measurement the samples were degassed at 300 °C for 2 h under vacuum.

Mercury intrusion porosimetry (MIP) analysis was conducted using a ThermoScientific PASCAL 140 (lower pressures) and a ThermoScientific PASCAL 440 (higher pressures). The pore



width ( $w_p$ ) distribution was calculated using the Washburn equation (eq. 1).<sup>28</sup> The used contact angle  $\theta$  was  $140^\circ$  with a surface tension  $\sigma$  of  $0.48 \text{ Nm}^{-1}$ . Here  $p_L$  and  $p_G$  are the pressure of liquid and gas, respectively, and  $d_p$  is the pore diameter.

$$p_L - p_G = -\frac{4\sigma \cos\theta}{d_p} \quad (1)$$

Crystalline phases and crystallite sizes ( $L_{vol}$ ) of the catalysts were studied with laboratory powder X-Ray diffraction (PXRD) measurements using a PANalytical X'Pert PRO diffractometer with Ni-filtered Cu  $K\alpha$  radiation ( $\lambda = 1.54060 \text{ \AA}$ ) for  $2\theta = 5\text{-}80^\circ$  ( $0.625^\circ$  steps with  $1.6 \text{ s step}^{-1}$ ). Analysis of the laboratory PXRD was performed similarly to SPXRD experiments (see section 2.5 and ESI†, chapter 4).

Transmission electron microscopy (TEM) and scanning transmission electron microscopy (STEM) images were obtained for three spent catalysts after catalytic testing on a Tecnai F20 (Philips) electron microscope with 200 kV acceleration. A copper grid was used as specimen holder and element distribution was studied energy dispersive X-ray analysis (EDX) using an EDAX s-UTW detector.

### 2.3 Catalyst activity testing

The catalytic performance of the catalysts was studied in a continuous flow setup with a stainless steel tubular fixed-bed reactor (length = 410 mm, inner diameter  $d_i = 7 \text{ mm}$ , outer diameter  $d_o = 9.5 \text{ mm}$ ) (Figure S 14, ESI†), described in previous work.<sup>26</sup> The catalyst bed (length = 30 to 35 mm) contained 300 mg of catalyst (sieve fraction 300-450  $\mu\text{m}$ ) diluted in 1.15 g of SiC (210  $\mu\text{m}$ , Carborundum, VWR Chemicals). The spare void of the reactor was densely packed with SiC (500  $\mu\text{m}$ ) and the different layers were separated with quartz glass wool to ensure a defined gas flow. Thermocouples (K-Type) were placed in front and behind the catalyst bed for automated temperature control, using the average temperature of the front and end positions. Gases were dosed using mass flow controllers (Bronkhorst) calibrated using a gas flow meter (Bios DryCal Definer 220, MesaLabs). Gaseous product analysis was performed by gas chromatography (GC) using an Agilent 490 micro gas chromatograph ( $\mu\text{-GC}$ ) (Channel 1: 10 m PoraPLOT Q, 0.25 mm diameter, carrier gas He; Channel 2: 10 m mole sieve column with 5  $\text{\AA}$ , 0.25 mm diameter, carrier gas Ar). Prior to each reaction, the catalysts were activated in the reactor in a 50 %  $\text{H}_2/\text{N}_2$  mixture (both purity 99.9999 % from Air Liquide) ( $600 \text{ mL min}^{-1}$ ) at  $500^\circ\text{C}$  for 2 h. After cooling to reaction temperature, the gas feed was changed to 10 %  $\text{CO}_2/40 \text{ % H}_2/\text{N}_2$  ( $\text{CO}_2$  purity 99.995 % from Air Liquide) resulting in a weight hourly space velocity (WHSV) of  $60 \text{ L g}_{cat}^{-1} \text{ h}^{-1}$ . The catalytic performance was tested at three different temperatures ( $250^\circ\text{C}$ ,  $350^\circ\text{C}$  and  $400^\circ\text{C}$ ) and a hold time of 1 h each to obtain stable catalytic activity. Conversion of  $\text{CO}_2$  ( $X_{\text{CO}_2}$ ) was calculated similarly to earlier measurements by Mutz *et al.* using  $\text{N}_2$  as internal standard (see ESI†).<sup>26</sup>

### 2.4 Operando synchrotron powder X-ray diffraction (SPXRD) experiments

SPXRD measurements were performed at the X04SA-MS beamline of the Swiss Light Source (Paul Scherrer Institute, Villigen, Switzerland).<sup>29</sup> An X-ray energy of 30.5 keV ( $\lambda = 0.406739 \text{ \AA}$ ) was used to ensure high transmission of the samples, which is required due to the strongly absorbing  $\text{ZrO}_2$  support. 2D diffraction patterns were acquired with a Pilatus 6M detector, which were azimuthally integrated using the Dioptas software.<sup>30</sup>

Operando SPXRD studies were carried out using a quartz capillary (WJM-Glas Müller GmbH) microreactor setup of 1.0 mm diameter.<sup>31</sup> About 4 mg of the undiluted calcined catalyst (sieve fraction 100-200  $\mu\text{m}$ ) resulting in a bed length of  $\approx 4 \text{ mm}$  was used for each experiment. The reactor was heated using a hot-air blower (LE MINI SENSOR KIT, Leister Technologies), gases were dosed using mass flow controllers (Bronkhorst) and reactor outlet gases were analyzed by on-line mass spectrometry (MS) with an OMNI-Star GSD 320 (Pfeiffer Vacuum). Before the experiments, the temperature inside an empty capillary was calibrated using a type-K-thermocouple (for calibration data see Figure S 16, ESI†). It should be noted that an online temperature control was used during the whole experiment, but the recording of the temperature values failed due to an error in the control software. A  $\text{LaB}_6$  NIST 640b standard was measured inside of a 1.0 mm quartz capillary as a calibrant for  $2\theta$  scale and to retrieve an instrumental profile function.

The initial calcined catalyst was first activated in a total flow of  $10 \text{ mL min}^{-1}$  of 25 %  $\text{H}_2/\text{He}$  at  $500^\circ\text{C}$  for 2 h (Figure 4b, blue) with a heating rate of  $10^\circ\text{C min}^{-1}$ . Afterwards, it was cooled to  $400^\circ\text{C}$  and switched to reaction conditions of 5 %  $\text{CO}_2/20 \text{ % H}_2/\text{He}$  to determine the initial activity of the catalyst sample at reaction step R1 for 30 min. Subsequently, the catalysts underwent three artificial thermal deactivation cycles with  $5^\circ\text{C min}^{-1}$  ramps and a holding time of 15 min at temperatures of  $500^\circ\text{C}$ ,  $575^\circ\text{C}$  and  $625^\circ\text{C}$ , under reaction conditions. In between each cycle, changes in catalyst activity were studied at  $400^\circ\text{C}$  labelled as reaction steps R2, R3 and R4. Afterwards, the sample was cooled to room temperature with  $10^\circ\text{C min}^{-1}$ . Diffraction patterns were measured with 9 s acquisition time during activation and final cool-down as well as 3 s during reaction conditions and artificial thermal deactivation cycles.

The on-line MS data was used to estimate the conversion of  $\text{CO}_2$  ( $X_{\text{CO}_2}$ ) and  $\text{H}_2$  ( $X_{\text{H}_2}$ ) during operando SPXRD.  $X_i$  for the respective  $m/z$  ratio and thus component  $i$  is calculated according to eq. 2:

$$X_i = \left(1 - \frac{I_{i,norm}}{I_{i,norm,baseline}}\right) \cdot 100\% \quad (2)$$

with the normalized ion current ( $I_{i,norm}$ ) as the ion current of trace  $i$  normalized to the He trace. The  $I_{i,norm,baseline}$  is retrieved after cooling down to room temperature at the end of each experiment under reaction conditions, see ESI† for details. To compare relative changes of the conversion during the cycles,  $X_i$  is normalized by the initial  $X_{i,R1}$  at R1:

$$X_{i,rel} = \frac{X_i}{X_{i,R1}} \quad (3)$$



## 2.5 Analysis of SPXRD data

Rietveld refinements<sup>32,33</sup> of the integrated *operando* SPXRD data were performed using Topas (v.6, Bruker AXS).<sup>34</sup> The measured LaB<sub>6</sub> NIST 640b standard was used to derive an instrumental profile function, described by a pseudo-Voigt Thompson-Cox Hastings peak shape. A micro-structure analysis was performed using the double-Voigt approach by Balzar as implemented in Topas to describe crystallite size ( $L_{vol}$ ) and strain ( $\eta$ ).<sup>35</sup> The monoclinic ZrO<sub>2</sub> phase was described by the structure reported by Smith *et al.*,<sup>36</sup> NiO phase by a structure from Rodic *et al.*,<sup>37</sup> and the Ni phase with a structure by Rouquette *et al.*<sup>38</sup> Sequential Rietveld refinements were performed by adapting templates available from the Topas wiki website.<sup>39</sup> More details on the Rietveld refinements are provided in the ESI†.

An average  $L_{vol,avg}$  of the catalyst is defined as following:

$$L_{vol,avg} = \sum L_{vol,i} \cdot \omega_i \quad (4)$$

with  $L_{vol,i}$  as the crystallite size of the respective phase  $i$  and  $\omega_i$  as the mass fraction of this phase. Additionally, the relative  $L_{vol,rel,i}$  of component  $i$  in reference to R1 ( $L_{vol,i,R1}$ ) and its difference  $\Delta L_{vol,rel,i}$  are calculated as following:

$$L_{vol,rel,i} = \frac{L_{vol,i}}{L_{vol,i,R1}} \quad (5)$$

$$\Delta L_{vol,rel,i} = \left( \frac{L_{vol,i}}{L_{vol,i,R1}} - 1 \right) \cdot 100\% \quad (6)$$

For spherical particles,  $L_{vol}$  can be used with the density ( $\rho$ ) to calculate the specific surface area (SSA):

$$SSA = \frac{6000}{L_{vol} \cdot \rho} \quad (7)$$

However, in practical cases and upon phase changes  $\rho$  also changes, which cannot be determined during *in situ* or *operando* SPXRD experiments. Therefore, SSA is approximated by fitting eq. 8 with the fitting parameters  $a$  and  $b$  to the measured  $A_{BET}$  and respective  $L_{vol,avg}$  in the initial state of the catalysts, i.e., taking into account the presence of ZrO<sub>2</sub> and NiO phases.

$$SSA = \frac{a}{L_{vol,avg}} + b \quad (8)$$

## 3 Results and discussion

### 3.1 Synthesis of catalysts with varying support texture

A series of five ZrO<sub>2</sub> supports was synthesized with different calcination temperatures ranging from 350 °C to 1000 °C (supports Z350 to Z1000, Table S 1, ESI†). Following Ni deposition, the resulting Ni/ZrO<sub>2</sub> catalysts were named accordingly as NZ350 to NZ1000 (Table 1). The aim was to prepare a catalyst series with distinct textural properties of the support (e.g.,  $A_{BET}$ ,  $V_p$ ) dependent only on one parameter – the support structure by varying calcination temperature (Figure 1). In addition, the supported Ni particles were intended to exhibit a similar initial size distribution across all catalysts.

The synthesized catalysts were first characterized by various methods to study the structural and textural properties as sum-

marized in Figure 2 and Table 1. The support textural properties were studied by N<sub>2</sub> physisorption to gain information about the surface area ( $A_{BET}$ ) and the pore volume ( $V_p$ ) (Table S 1, ESI†). A steady decrease in  $A_{BET}$  from 93 m<sup>2</sup>g<sup>-1</sup> for the support calcined at 350 °C to 5 m<sup>2</sup>g<sup>-1</sup> for the support calcined at 1000 °C was observed (Figure 2a, light grey). The  $V_p$  changed analogously from 0.23 cm<sup>3</sup>g<sup>-1</sup> to 0.009 cm<sup>3</sup>g<sup>-1</sup> with increasing calcination temperature (Figure 2d, light grey). The as-prepared Ni/ZrO<sub>2</sub> catalysts exhibited similar tendencies as the pure supports. A decrease in  $A_{BET}$  from 66 m<sup>2</sup>g<sup>-1</sup> to 18 m<sup>2</sup>g<sup>-1</sup> (Figure 2a, dark grey) and in  $V_p$  from 0.23 cm<sup>3</sup>g<sup>-1</sup> to 0.056 cm<sup>3</sup>g<sup>-1</sup> (Figure 2d, dark grey) were observed with increasing calcination temperature of the initial support (Table 1). An increased density and therefore decrease in volume of the ZrO<sub>2</sub> powders with higher support calcination temperatures was visually apparent following synthesis (Figure 2i), which correlates with the N<sub>2</sub> physisorption results. In general, the  $A_{BET}$  values increased following Ni deposition, excluding for the NZ350 catalyst. The relatively large decrease in  $A_{BET}$  between Z350 (93 m<sup>2</sup>g<sup>-1</sup>) and NZ350 (66 m<sup>2</sup>g<sup>-1</sup>) can be explained by the subsequent calcination of all catalysts at 500 °C after Ni deposition. For all catalysts except NZ350, 500 °C was an equal or lower temperature treatment than during the initial support calcination step prior to Ni deposition, and would therefore not be expected to induce significant changes in the support. Notably for the NZ350 catalyst  $A_{BET}$  (66 m<sup>2</sup>g<sup>-1</sup>) and  $V_p$  (0.23 cm<sup>3</sup>g<sup>-1</sup>) remained higher than for NZ500 (52 m<sup>2</sup>g<sup>-1</sup>, 0.14 cm<sup>3</sup>g<sup>-1</sup>). At higher support calcination temperatures (650–1000 °C) the catalysts exhibited larger  $A_{BET}$  and  $V_p$  than the pure support, which can be explained by additional contribution of the nickel to the surface area and pore volume. The  $A_{BET}$  of the catalysts is comparable to other Ni/ZrO<sub>2</sub> catalysts in literature. Everett *et al.* reported 66 m<sup>2</sup>g<sup>-1</sup> (calcined at 500 °C) for a 5 wt.% Ni/ZrO<sub>2</sub> catalyst with commercial m-ZrO<sub>2</sub> from Saint-Gobain.<sup>40</sup> Martinez *et al.* presented surface areas of 53 and 19 m<sup>2</sup>g<sup>-1</sup> for 20 wt.% Ni/ZrO<sub>2</sub> catalysts (calcined at 500 °C) with mixed ZrO<sub>2</sub> phases (m-ZrO<sub>2</sub> and t-ZrO<sub>2</sub>).<sup>41</sup> Pandey *et al.* reported Ni and Ni-Fe supported on m-ZrO<sub>2</sub> (calcined at 500 °C) with surface areas between 34 and 23 m<sup>2</sup>g<sup>-1</sup>.<sup>42</sup>

The pore structure of the as-prepared catalysts was further studied by mercury intrusion porosimetry (MIP) (Figures S 1-5). The  $w_p$  distribution for NZ500 and NZ1000 are depicted in Figure 2b,c. A shift to larger mean  $w_p$  values (from 17 nm to 43 nm) was observed with rising calcination temperature. In addition, TEM analysis showed growth and agglomeration of the support particles during the aging process, leading to the formation of intraparticle voids (Figure 2e,f). For the NZ1000 catalyst, the support structure mainly consists of large agglomerated particles with no visible internal porosity. Compared to NZ1000, the NZ500 catalyst has smaller particles, which seem to be packed more densely. Hence, an increase of intraparticle voids with rising support calcination temperature can be observed combined with particle growth, explaining the  $w_p$  changes from MIP. This further substantiates the N<sub>2</sub> physisorption results which showed a strong decrease of surface area, and the visually apparent increase in density of supports calcined at higher temperature. The trend of increasing support particle sizes can further be con-



Table 1 Overview of the characterization results for the different as-prepared calcined Ni/ZrO<sub>2</sub> catalysts. Additionally,  $L_{vol,Ni}$ ,  $D$  and  $TOF$  for the spent catalysts after testing in CO<sub>2</sub> methanation at 400 °C is reported.

Catalysts	$\omega_{Ni}$ / wt.%	$A_{BET}$ / m <sup>2</sup> g <sup>-1</sup>	$V_p$ / cm <sup>3</sup> g <sup>-1</sup>	$L_{vol,ZrO_2}$ / nm	$L_{vol,NiO}$ / nm	$L_{vol,Ni}$ / nm	$D$ / %	$TOF$ / s <sup>-1</sup>
NZ350	14.1	66	0.23	10.4	10.7	34	11.0	$2.3 \cdot 10^{-2}$
NZ500	13.2	53	0.14	13.6	9.6	32	11.2	$1.8 \cdot 10^{-2}$
NZ650	14.7	33	0.070	23	10.3	26	12.9	$1.2 \cdot 10^{-2}$
NZ800	15.2	26	0.055	45	8.1	31	11.5	$7.7 \cdot 10^{-3}$
NZ1000	14.7	18	0.056	95	7.9	29	11.8	$2.6 \cdot 10^{-3}$

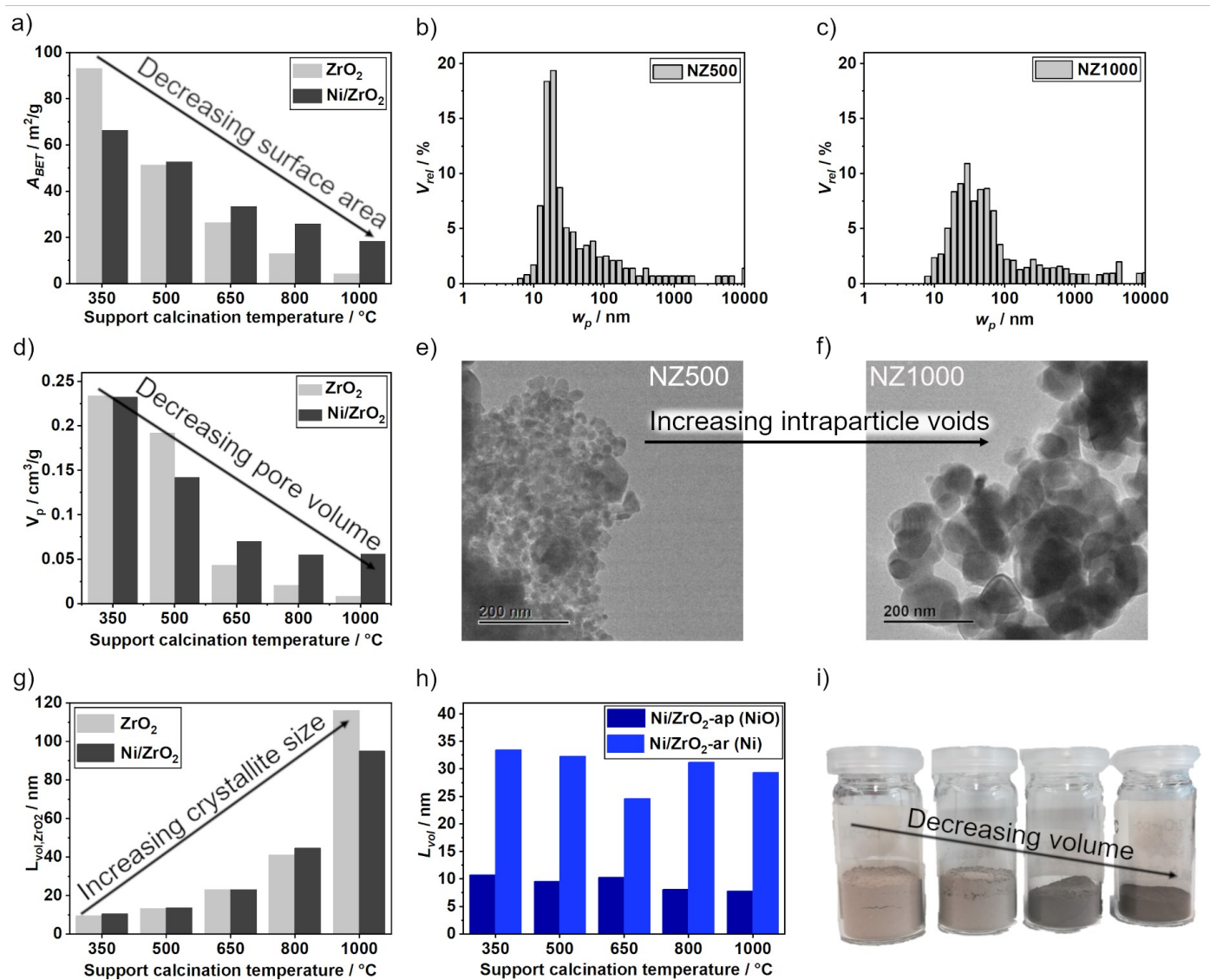


Fig. 2 (a)  $A_{BET}$  obtained by N<sub>2</sub> physisorption of the pure calcined supports (light grey) and as-prepared calcined catalysts (dark grey). (b,c) Pore width ( $w_p$ ) distribution obtained by MIP for as-prepared calcined NZ500 and NZ1000. (d)  $V_p$  obtained by N<sub>2</sub> physisorption of the pure calcined supports (light grey) and as-prepared calcined catalysts (dark grey). (e,f) TEM images of the catalysts NZ500 and NZ1000 after CO<sub>2</sub> methanation. (g) ZrO<sub>2</sub> crystallite sizes ( $L_{vol,ZrO_2}$ ) of the pure calcined supports (light grey) and the as-prepared calcined catalysts (dark grey). (h) Crystallite size  $L_{vol}$  for NiO of the as-prepared catalysts (Ni/ZrO<sub>2</sub>-ap) and Ni of the spent catalysts after CO<sub>2</sub> methanation (Ni/ZrO<sub>2</sub>-ar). (i) An equal mass of the as-prepared catalysts NZ500, NZ650, NZ800 and NZ1000 showing volume loss and colour change.



firming with laboratory powder X-Ray diffraction (PXRD). The PXRD for the calcined supports, as-prepared and spent catalysts are shown in Figures S 6-9, ESI†. For the support almost all reflections can be assigned to m-ZrO<sub>2</sub> with small contributions of t-ZrO<sub>2</sub> for the supports Z25 and Z350 (Figure S 6,7, ESI†). The t-ZrO<sub>2</sub> phase is not detected in NZ350, which might be related to the calcination after Ni deposition. By using Rietveld refinement, the crystallite sizes ( $L_{vol}$ ) of ZrO<sub>2</sub> for the pure support and the catalysts were determined (Tables S 2-7, ESI†). The zirconia crystallite size ( $L_{vol,ZrO_2}$ ) increased for the pure support together with temperature from  $\approx 10$  nm (Z350) to  $\approx 116$  nm (Z1000) (Figure 2g, light grey, Table S 2, ESI†). For the catalysts (dark grey) a similar trend with increasing  $L_{vol,ZrO_2}$  from  $\approx 10$  nm (NZ350) to  $\approx 95$  nm (NZ1000) was observed (Figure 2g, Table 1). The difference in  $L_{vol,ZrO_2}$  for Z1000 (116 nm) and NZ1000 (95 nm) could be due to support changes during the synthesis and/or calcination after Ni deposition. In summary, the textural properties  $A_{BET}$  and  $V_p$  decreased, whereas  $L_{vol,ZrO_2}$  increased with rising support calcination temperature. Therefore, the temperature can be used as a single parameter to adjust the textural properties of the initial supports prior to Ni deposition.

Despite the textural differences of the supports, it was aimed to have similar Ni loading and particle size across the catalyst series. Elemental analysis showed that all catalysts have a comparable Ni loading of  $\approx 13$ -15 wt.% (Table 1). The crystallite sizes of NiO (as-prepared catalysts) and Ni (spent catalysts) were investigated using PXRD. A comparable  $L_{vol,NiO}$  for all as-prepared catalysts of  $\approx 10$  nm was determined (Figure 2h, light blue). After the reaction,  $L_{vol,Ni}$  was  $\approx 32$  nm for all catalysts except NZ650 (26 nm) (Figure 2h, dark blue). The crystallite growth from 10 to 32 nm could be due to agglomeration during reduction and/or reaction. The size of Ni crystallites is comparable to other Ni/ZrO<sub>2</sub> catalysts reported in literature. Pandey *et al.*<sup>42</sup> reported  $L_{vol,Ni}$  of 58 nm for a 10 wt.% Ni/ZrO<sub>2</sub> catalyst and Ren *et al.*<sup>43</sup> 34 nm for a 30 wt.% Ni/ZrO<sub>2</sub> catalyst.

For a 17 wt.% Ni/Al<sub>2</sub>O<sub>3</sub> catalyst, which was synthesized with the same method used in this study,  $L_{vol,Ni}$  of 5.7 nm was reported.<sup>17,26</sup> However the different support material (Al<sub>2</sub>O<sub>3</sub>) limits comparability to this study, while tuning the Ni particle size towards lower values is not the focus of the present work. A common technique to obtain particle size distributions is TEM/STEM. However, the obtained contrast between ZrO<sub>2</sub> and Ni was too low to distinguish these from each other, which did not allow for reasonable particle size analysis using TEM/STEM. Therefore, EDX mapping was applied for specific areas of selected catalysts (Figures S 10-13, ESI†). Both large ( $\geq 100$  nm) and small Ni particles (10-30 nm) were found for all catalysts by EDX. With the large Ni particles, the number of obtained images was not sufficient to retrieve statistically meaningful particle size distributions. Therefore, solely PXRD is used to quantitatively estimate the particle/crystallite size based on structural refinement. In conclusion, a catalyst series (NZ350-1000) with similar Ni centers was obtained based on ZrO<sub>2</sub> supports with varying textural properties. This series allows to further investigate the activity and stability of the catalysts depending on the support properties.

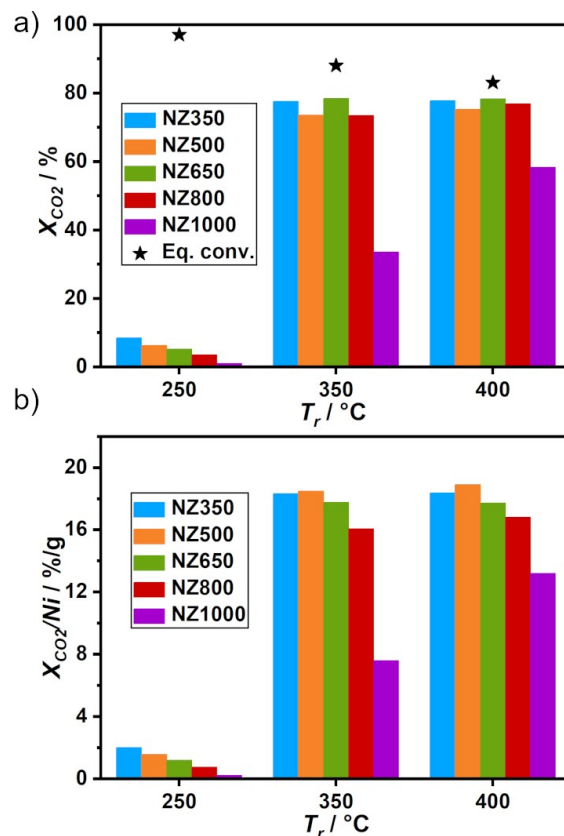


Fig. 3 Catalytic activity of the Ni/ZrO<sub>2</sub> series in CO<sub>2</sub> methanation at 250 °C, 350 °C and 400 °C. (a) CO<sub>2</sub> conversion ( $X_{CO_2}$ ) with equilibrium conversion (black stars). (b)  $X_{CO_2}$  normalized to the Ni amount in the reactor.

### 3.2 Catalyst testing results

The catalytic activity in CO<sub>2</sub> methanation was monitored at three reaction temperatures ( $T_r$ : 250 °C, 350 °C, 400 °C) (Figure 3a). At 250 °C between 1 to 8 %  $X_{CO_2}$  was reached, which is far below the equilibrium conversion of 97% and therefore suitable for probing catalyst stability.<sup>44</sup> A trend of decreasing  $X_{CO_2}$  with increasing calcination temperature of the support could be observed during reaction at 250 °C. At higher temperatures (350 °C, 400 °C) no specific trend was observed, except for the strong decrease in activity for NZ1000. At 350 °C conversions between 73% and 78% were obtained for NZ350 to NZ800 and 33% for NZ1000. At 400 °C the NZ1000 catalyst showed an increase in activity with 58%  $X_{CO_2}$ , whereas the rest of the series achieved similar  $X_{CO_2}$  as for 350 °C ( $\approx 78\%$ ), close to equilibrium conversion (Figure 3a, black stars). For better comparison of the activity data, the conversion was normalized to the Ni amount of the tested catalyst (Figure 3b). With the normalization a similar trend to the one observed at 250 °C can be found also at higher temperatures for the catalysts NZ800 and NZ1000, exhibiting decreasing activity compared to NZ350, NZ500 and NZ650. For the latter no clear trend can be found.

All catalysts exhibited 100% selectivity towards CH<sub>4</sub> at 250 °C (Figure S 15, ESI†). With increase of  $T_r$ , the formation of CO slightly increases. CO formation is probably due to the reverse water gas shift (RWGS) reaction, which is endothermic



and therefore more favored at higher temperatures.<sup>44</sup> The catalysts showed almost no differences in CH<sub>4</sub> selectivity depending on the support calcination temperature except for NZ1000. At 350 °C CH<sub>4</sub> selectivity decreased from 99 % (NZ350) to 86 % (NZ1000), while at 400 °C 97 % (NZ350) to 84 % (NZ1000) was found. The decline in  $S_{CH_4}$  is accompanied with a rise in  $S_{CO}$  from 1 % (NZ350) to 14 % (NZ1000) at 350 °C and from 3 % (NZ350) to 16 % (NZ1000) at 400 °C. A similar phenomena was observed by Beierlein *et al.* by applying rapid aging tests on Ni/Al<sub>2</sub>O<sub>3</sub> catalysts.<sup>18</sup> They could observe an increase in  $S_{CO}$  for samples aged at higher temperatures. Zhao *et al.*<sup>45</sup> used different combustion methods to synthesize 15 wt.% Ni/ZrO<sub>2</sub> catalysts and tested them in CO<sub>2</sub> methanation. They obtained 1-15 %  $X_{CO_2}$  at 250 °C, 40-80 % at 350 °C and 60-82 % at 400 °C. The selectivity towards CH<sub>4</sub> was 100 % at 250 °C and at higher temperatures a slight decrease (93 %) for some catalysts was observed.

For better comparison with literature the turnover frequency (*TOF*) was calculated (see details in ESI†) for  $T_r$  of 250 °C with  $X_{CO_2}$  far below the thermodynamic equilibrium (Table 1). The dispersion  $D$  was calculated using the  $L_{vol,Ni}$  obtained from Rietveld refinements of the spent samples. For all catalysts a similar  $D$  ranging from 11 to 12 % was determined (Table 1). The calculated *TOF* values ranged between  $2.3 \cdot 10^{-2} s^{-1}$  for NZ350 and  $2.6 \cdot 10^{-3} s^{-1}$  for NZ1000 (Table 1). Tan *et al.*<sup>46</sup> reported a comparable *TOF* of  $3.8 \cdot 10^{-3} s^{-1}$  at 200 °C for a 12 wt.% Ni/ZrO<sub>2</sub> catalyst with similar  $X_{CO_2}$ , as at 250 °C reported here. The value is similar to NZ1000 at 250 °C with  $2.6 \cdot 10^{-3} s^{-1}$ , which showed the lowest activity in this series compared to NZ350 with a nearly one order of magnitude higher *TOF* of  $2.3 \cdot 10^{-2} s^{-1}$ . Jia *et al.*<sup>47</sup> obtained a *TOF* value of  $4.0 \cdot 10^{-2} s^{-1}$  for a 10 wt.% Ni/ZrO<sub>2</sub> catalyst at 235 °C which is similar to NZ350. At 200 °C the group of Liu *et al.*<sup>48</sup> found a *TOF* of  $4.9 \cdot 10^{-3} s^{-1}$  with a similar  $X_{CO_2}$  as for 250 °C in this study. In conclusion, the activity of the catalysts can be influenced by the support calcination temperature, while showing comparable performance to literature values. Notably, the loading, dispersion, and crystallite size of nickel was similar for all catalysts. A decrease in  $X_{CO_2}$  and *TOF* with rising aging temperature can be observed, especially at  $T_r$  of 250 °C. Following activity tests, the stability of the catalyst during thermal aging experiments was further investigated to distinguish between deactivation caused by changes of the support or Ni particles.

### 3.3 Operando SPXRD experiments

*Operando* SPXRD studies were carried out for the Ni/ZrO<sub>2</sub> catalyst series to investigate various potential deactivation mechanisms. Distinctions in catalyst thermal stability were expected due to the different initial calcination temperatures of the ZrO<sub>2</sub> supports prior to Ni deposition, and the observed differences in catalytic performance depending on the support properties. The experimental setup and applied temperature profile are shown in Figure 4a,b, respectively. The acquired MS data for the samples are shown in Figure S 17,19,21,23,25, ESI†. All catalysts were first activated in 25 %H<sub>2</sub>/He at 500 °C for 2 h with the SPXRD results shown in Figure 4d. During activation the NiO reflexes completely vanish and Ni reflexes appear in the same tempera-

ture region ( $\approx 200$  to 250 °C) for all five samples.

The activation was followed by switching to reaction conditions 5 %CO<sub>2</sub>/20 %H<sub>2</sub>/He at 400 °C for 30 min, which is labelled as the first reaction step R1. R1 is used to determine the initial activity of the catalysts based on the determined  $X_{CO_2}$  and  $X_{H_2}$  (Figure S 18,20,22,24,26, ESI†). The  $X_{CO_2}/Ni$  is shown in Figure 4c. The activity differences between the samples show comparable trends to those found during laboratory testing (Figure 3). R1 was followed by artificial thermal deactivation cycles (Figure 4b), with temperatures of 500 °C, 575 °C and 625 °C. After each cycle the activity of the catalysts was measured again at 400 °C for 15 min, labelled as reaction steps R2, R3 and R4, respectively. This allows to determine catalyst deactivation depending on three different applied temperatures. During thermal deactivation cycles no changes of the crystalline phase composition were found as shown by the SPXRD in Figure 4e. Minor changes of the reflex positions (Figure 4e), can be attributed to temperature induced lattice expansion or contraction, which matches the temperature program applied to the capillary.

### 3.4 Crystallite size changes during operando SPXRD

In general, textural properties such as surface area are strongly connected to catalyst performance. In particular adsorption of reactants or products takes place on the surface, but the available surface area is also linked to stabilization of metal nanoparticles. The specific surface area (*SSA*) can be calculated from particle sizes as shown in eq. 7, where for crystalline compounds the particle size can be approximated by the crystallite size. However, this relation is only valid for spherical particles. In the present case, two distinct crystalline phases are present, which limits the definition of an overall particle size based on the crystallite sizes as required for eq. 7. Additionally, exact knowledge about  $\rho$  is hardly possible during *operando* experiments due to textural changes of the sample, which might lead to density changes. Therefore, in a first step an average crystallite size ( $L_{vol,avg}$ ) is calculated for the catalysts in the initial calcined state based on eq. 4 taking into account  $L_{vol,ZrO_2}$  and  $L_{vol,NiO}$ . Details on the respective refinements are provided in the ESI†. This  $L_{vol,avg}$  is then correlated to  $A_{BET}$  (Figure 5a), which is available for the catalysts in the initial state. This correlation is fitted by eq. 8, which is similar to eq. 7 without the requirement of knowing the exact value of  $\rho$  and approximating it *via* a fitting parameter. The fitting results are shown in Figure 5a with the theoretical curve for pure monoclinic ZrO<sub>2</sub> (eq. 7,  $\rho = 5.86 g cm^{-3}$ )<sup>36</sup> showing a similar trend.

Based on the fitted values it is possible to calculate the *SSA* of the catalysts during the *operando* SPXRD experiments using  $L_{vol,avg}$  of the ZrO<sub>2</sub> and Ni phases present after activation. However, it should be noted that the values are an approximation as the correlation was obtained for the calcined state and not the activated state. Nevertheless, as all catalysts show a very similar phase composition and no crystalline phase changes occur during reaction conditions and thermal deactivation cycles, *SSA* can be approximated in this way to unravel textural changes of the catalysts. The same correlation was also studied for the pure supports as shown in Figure S 39, ESI†, resulting in similar fit values





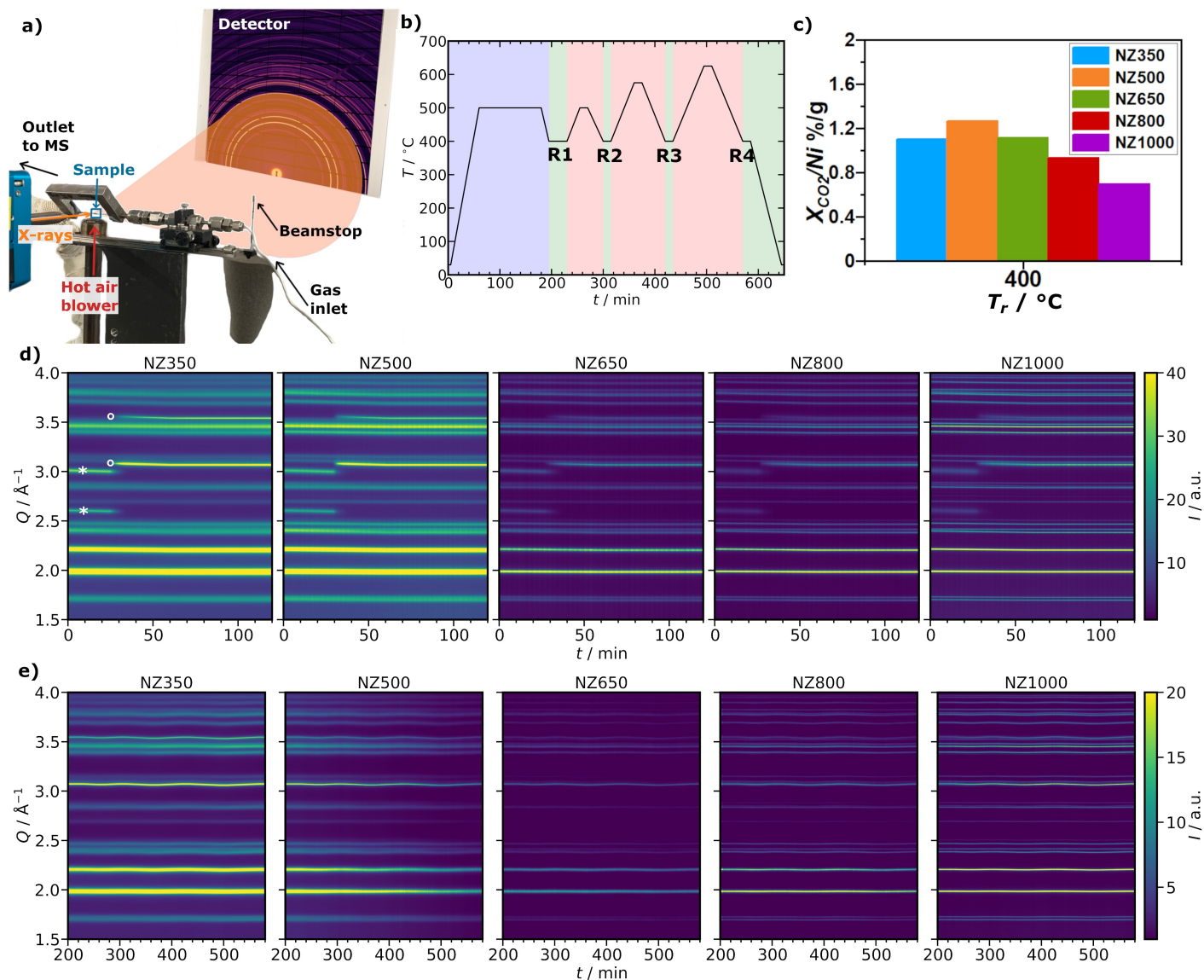


Fig. 4 (a) Scheme of the used experimental setup at the beamline. (b) Overview of the experimental conditions during *operando* SPXRD experiments with activation in 25%  $\text{H}_2/\text{He}$  (blue), reaction conditions 5%  $\text{CO}_2/20\% \text{H}_2/\text{He}$  (green) and thermal deactivation cycles under reaction conditions (red) with each reaction condition step labelled as R1-4. (c)  $\text{CO}_2$  conversion normalized by the Ni mass inside the reactor of the *operando* SPXRD at reaction step R1. (d) 2D overview plots of the diffraction patterns showing the Ni ( $\circ$ ) formation from NiO ( $*$ ) during activation of the five samples as well as (e) under reaction conditions and thermal deactivation cycles showing no crystalline phase changes.



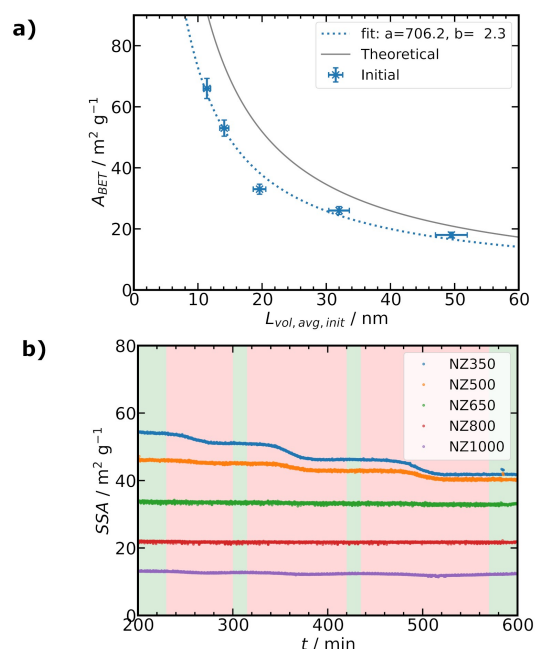


Fig. 5 (a) Fitted correlation (blue dotted line) of the measured  $A_{BET}$  to  $L_{vol,avg}$  (blue crosses, mass fraction weighted average of  $L_{vol,ZrO_2}$  and  $L_{vol,NiO}$ ) initially at the start of the *operando* SPXRD experiments based on eq. 8 with fitting variables  $a$  and  $b$ , error bars estimated as 5% standard deviation. Theoretical relation of  $A_{BET}$  and  $L_{vol}$  for spherical particles based on eq. 7 (grey line). (b) Changes of SSA during reaction conditions and thermal deactivation cycles of the *operando* SPXRD experiments as calculated from  $L_{vol,avg}$  (mass fraction weighted average of  $L_{vol,ZrO_2}$  and  $L_{vol,Ni}$ ) and the fit values from (a) according eq. 8 (shaded areas as Figure 4b).

supporting the correlation approach. The SSA starting from R1 evolves differently for the catalysts as shown in Figure 5b. As for  $A_{BET}$  analysis (Figure 2a), it can be observed that the initial SSA of the catalysts (at  $t = 200$  min) decreases with increasing calcination temperature of the  $ZrO_2$  support before Ni deposition. The initial SSA for all catalysts is lower compared to the  $A_{BET}$  values of the initial calcined samples (Table 1), which can be attributed to the increased crystallite sizes of Ni compared to NiO by a factor of  $\approx 3$  (for details see Table S 8–13 ESI†). For NZ350 a pronounced step-wise decrease of the SSA can be observed, with each step related to one of the thermal deactivation cycles. NZ500 exhibits a decrease only significantly with the second and third thermal deactivation step, while NZ650, NZ800 and NZ1000 show no significant reduction of SSA following the thermal deactivation cycles. Besides the study of the overall textural changes based on the calculated SSA, Rietveld refinement together with microstructural analysis allows to investigate crystallite size changes of each crystalline phase. Figure 6a,b show the evolution of the selected (111) reflex for  $ZrO_2$  and Ni phases during *operando* SPXRD, respectively. The different peak shapes of the  $ZrO_2$  (111) reflection (Figure 6a) illustrate the different  $ZrO_2$  crystallite sizes depending on the calcination temperature of the support prior to Ni deposition. A representative pattern during each of the reaction steps R1 to R4 is highlighted. For NZ350 and NZ500 significant changes of the reflex depending on the reaction step can be observed, which are more pronounced for NZ350. This indicates crystallite growth of the  $ZrO_2$  phase during thermal deactivation cycles. For NZ650, NZ800 and NZ1000 no significant variation of the reflex can be directly observed. In the case of the Ni (111) reflex (Figure 6b), all samples show significant changes depending on the reaction step. The variations become more pronounced with higher calcination temperature of the  $ZrO_2$  support. Additionally to the qualitative description of the peak shape, a microstructural refinement as part of Rietveld refinement of the SPXRD provides quantitative information about crystallite size changes during the thermal deactivation cycles. Figure 6c-e show the evolution of  $L_{vol,ZrO_2}$ ,  $L_{vol,Ni}$  and the mass fraction weighted average  $L_{vol,avg}$  of both, respectively. Complementary to the absolute values, Figure 6f-h show the relative changes compared to the initial reaction step R1, respectively, indicating sequential changes during the subsequent thermal aging cycles.

$L_{vol,ZrO_2}$  depends on the calcination temperature of the support prior to Ni deposition and ranges from about 9 nm to 70 nm in the initial reaction step R1. During thermal deactivation cycles a step-wise increase of  $L_{vol,ZrO_2}$  can be observed for each temperature step for NZ350. Although all catalysts were initially activated for 2 h at 500 °C, for NZ350 a crystallite growth can be observed already at the first thermal deactivation temperature of 500 °C. For NZ500 a significant increase of the crystallite size is only detected with the second and third thermal deactivation steps. The catalysts NZ650, NZ800 and NZ1000 show no significant increase of  $L_{vol,ZrO_2}$  during those cycles. The reversible increase of  $L_{vol,ZrO_2}$  of NZ1000 during the thermal deactivation cycles (Figure 6c,f) might be explained by larger crystalline domains due to lattice expansion or reversible ordering/disordering, but the differences are small compared to the refinement error and could



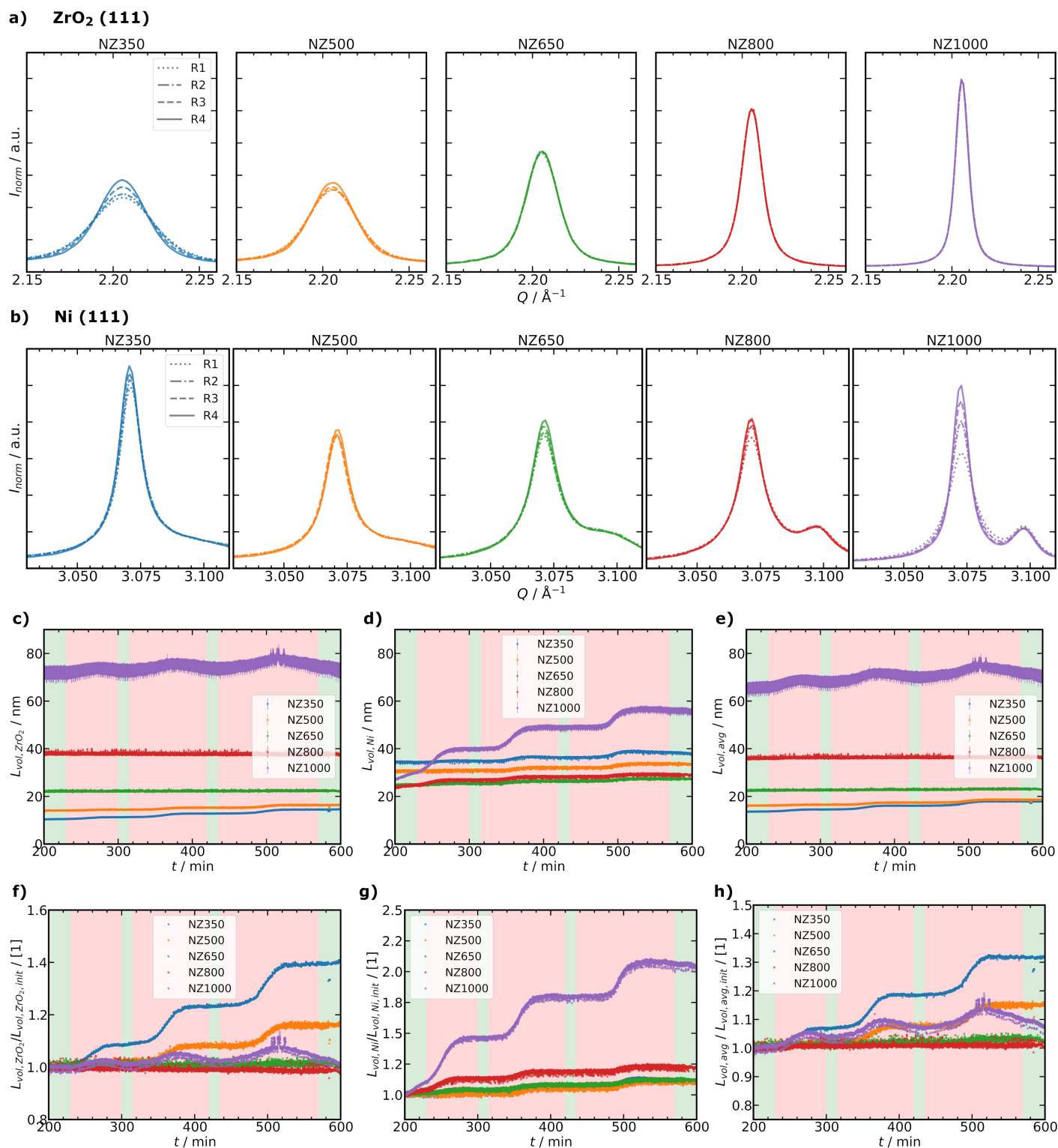


Fig. 6 (a) Changes of the ZrO<sub>2</sub> (111) reflex during thermal deactivation cycles highlighted by R1, R2, R3 and R4 steps, (b) analogous changes of the Ni (111) reflex. Evolution of different crystallite sizes obtained from sequential Rietveld refinements for the different catalysts during *operando* SPXRD experiments: (c)  $L_{vol,ZrO_2}$ , (d)  $L_{vol,Ni}$  and (e)  $L_{vol,avg}$  (mass fraction weighted average of  $L_{vol,ZrO_2}$  and  $L_{vol,Ni}$ ). Relative changes of  $L_{vol}$  normalized to the initial reaction step R1 according eq. 5: (f) ZrO<sub>2</sub> phase, (g) Ni phase and (h) average crystallite size of the catalysts. Shaded areas as Figure 4b.



also be caused by refinement artifacts. The evolution of  $L_{vol,Ni}$  is contrary compared to the  $ZrO_2$  phase. The initial  $L_{vol,Ni}$  at reaction step R1 range from about 25 to 35 nm for the different catalysts (Figure 6d). For NZ350, NZ500 and NZ650, the  $L_{vol,Ni}$  only slightly increased with thermal deactivation after the second reaction step R2 (Figure 6d,g). This is different for the NZ800 and NZ1000 samples where  $L_{vol,Ni}$  already increased with the first thermal deactivation step, while the behavior is most pronounced for NZ1000. The changes can be also observed for the  $L_{vol,avg}$  in Figure 6e,h. As  $L_{vol,avg}$  represents the mass fraction weighted average for  $ZrO_2$  and Ni it mainly reflects changes of the  $ZrO_2$  phase. Therefore, here the NZ350 and NZ500 samples show the most pronounced changes. On the other hand, it can be observed that the strong changes of  $L_{vol,Ni}$  result in a significant increase of the  $L_{vol,avg}$  for NZ1000. The strong Ni crystallite size increase in NZ1000 might be explained that the support reached such a small SSA that Ni particle growth is strongly favored. In contrast, NZ650 and NZ800 were as a whole less impacted by the thermal deactivation procedure.

In summary, the crystallite size changes during thermal deactivation cycles could be quantified and show for NZ350 and NZ500 mainly changes of  $L_{vol,ZrO_2}$ , while for NZ800 and NZ1000 especially changes of  $L_{vol,Ni}$  were observed.

### 3.5 Correlation of crystallite size and thermal deactivation

The conversion of  $CO_2$  and  $H_2$  obtained from MS analysis were used to determine the activity of the catalysts during *operando* SPXRD. The absolute values for  $X_{CO_2}$  and  $X_{H_2}$  at the different reaction steps R1-4 are shown in Figure S 27,28, ESI†, respectively. The initial conversions for the catalysts at R1 are in the range of 57 to 67%. Therefore, it can be reasonably assumed that the reaction is performed far from thermodynamic equilibrium conditions or full conversion ( $\approx 80\%$ , Figure 3a), which is a prerequisite to detect possible catalyst deactivation. The changes of  $X_{CO_2}$  and  $X_{H_2}$  in comparison to the initial activity at R1 ( $\Delta X$ ) are shown in Figure 7a,d, respectively. All studied catalysts show a step-wise deactivation during the thermal deactivation cycles. Therefore, the deactivation can be clearly related to the temperature applied during each of the cycles. Less pronounced deactivation occurs for the NZ650 and NZ800 catalysts, which suffer a loss of  $\approx 1\%$  in  $X_{CO_2}$  and  $X_{H_2}$  after thermal deactivation cycles. The other three catalysts lost more than 2% in  $X_{CO_2}$  and  $X_{H_2}$ , while there are differences in the extent of activity loss between  $X_{CO_2}$  and  $X_{H_2}$ .

Besides the activity differences, the changes of  $L_{vol,rel,ZrO_2}$  and  $L_{vol,rel,Ni}$  in reference to the initial reaction step R1 are shown in Figure 7b,e, respectively. The  $L_{vol,rel,ZrO_2}$  of NZ350 is increased by about 40% and for NZ500 by about 17% compared to the initial values at R1, while the other three catalysts show only minor changes of the  $L_{vol,rel,ZrO_2}$  after thermal deactivation cycles of less than 3%. This is different for  $L_{vol,rel,Ni}$ , where NZ1000 shows an increase of almost 100% followed by the NZ800 sample of  $\approx 20\%$ . The other three samples show increases of  $\approx 10\%$  or below.

To estimate the influence of the different  $L_{vol}$  changes on catalyst deactivation, the relative conversions ( $X_{CO_2,rel}$ ,  $X_{H_2,rel}$ , eq. 3)

are correlated with the relative crystallite sizes ( $L_{vol,rel,i}$  eq. 5) with respect to the initial reaction step R1 in Figure 7c,f, respectively. This correlation analysis allows to retrieve information regarding which of the two phases might have a stronger influence on catalyst deactivation. For both evaluated conversions, the strongest observed correlations are for the changes of  $L_{vol,Ni}$  of the NZ1000 catalyst, followed by the correlations of  $L_{vol,ZrO_2}$  for NZ350. In general, it can be observed that there is a greater correlation between  $L_{vol,Ni}$  and the conversions for NZ1000, NZ800 and NZ650. This is different for NZ350 and NZ500, where the correlation of  $L_{vol,ZrO_2}$  with the conversions is larger than  $L_{vol,Ni}$ .

### 3.6 Overall discussion of the thermal deactivation

The five different studied catalysts essentially differ by the calcination temperature and as consequence surface area and pore volume of the  $ZrO_2$  support prior to Ni deposition, while the following calcination and activation steps are identical for all samples. In addition, the initial properties of the active metal Ni particles in terms of loading, dispersion, and crystallite size were similar for all catalysts following synthesis and calcination. As observed in the *operando* SPXRD the activity trends of the catalysts after activation at R1 are similar compared to laboratory tests, showing decreasing activity with higher calcination temperature of the support, especially for NZ1000. The activated catalysts at R1 are mainly distinguished by their  $L_{vol,ZrO_2}$ , while the  $L_{vol,Ni}$  is in a comparable range for all catalysts with minor differences. The  $L_{vol,Ni}$  is relatively large at around 30 nm. Therefore, it can be reasonably assumed that no major differences in the reaction mechanism depending on the Ni particle size as shown by Vogt *et al.*<sup>15</sup> are present as the kind of surface sites are similar and deactivation as reported by Mutz *et al.*<sup>14</sup> should be negligible. The resulting activity should mainly depend on the available active surface area of the catalysts.

Typically, the active surface area and the specific surface area of catalysts are determined *via* gas sorption methods in *post mortem* analysis.<sup>49,50</sup> However, an application of those under *operando* conditions is hardly possible. Contrary to this, PXRD with microstructural refinement as shown here allows to determine textural changes of the  $ZrO_2$  support and Ni nanoparticles as long as there are no complex phase changes occurring during thermal deactivation. In the present case, the five catalysts show different crystallite size changes and deactivation behavior depending on the calcination temperature of the support. The most pronounced catalyst deactivation was observed for NZ350, NZ500 and NZ1000 catalysts (Figure 7a,d), while for those three samples also the strongest crystallite size changes were found. For NZ350 and NZ500, mainly an increase of  $L_{vol,ZrO_2}$  and thus sintering of the support was detected, while for NZ1000 the  $L_{vol,Ni}$  is much larger and thus Ni particle sintering occurred. Based on the correlation analysis shown in Figure 7c,f the major reason for catalyst deactivation might be divided into: (i) dominant changes of the  $ZrO_2$  support, (ii) dominant changes of the Ni phase and (iii) an intermediate region with both effects as schematically illustrated in Figure 8.

Despite that all catalysts were activated at 500 °C for 2 h, NZ350,



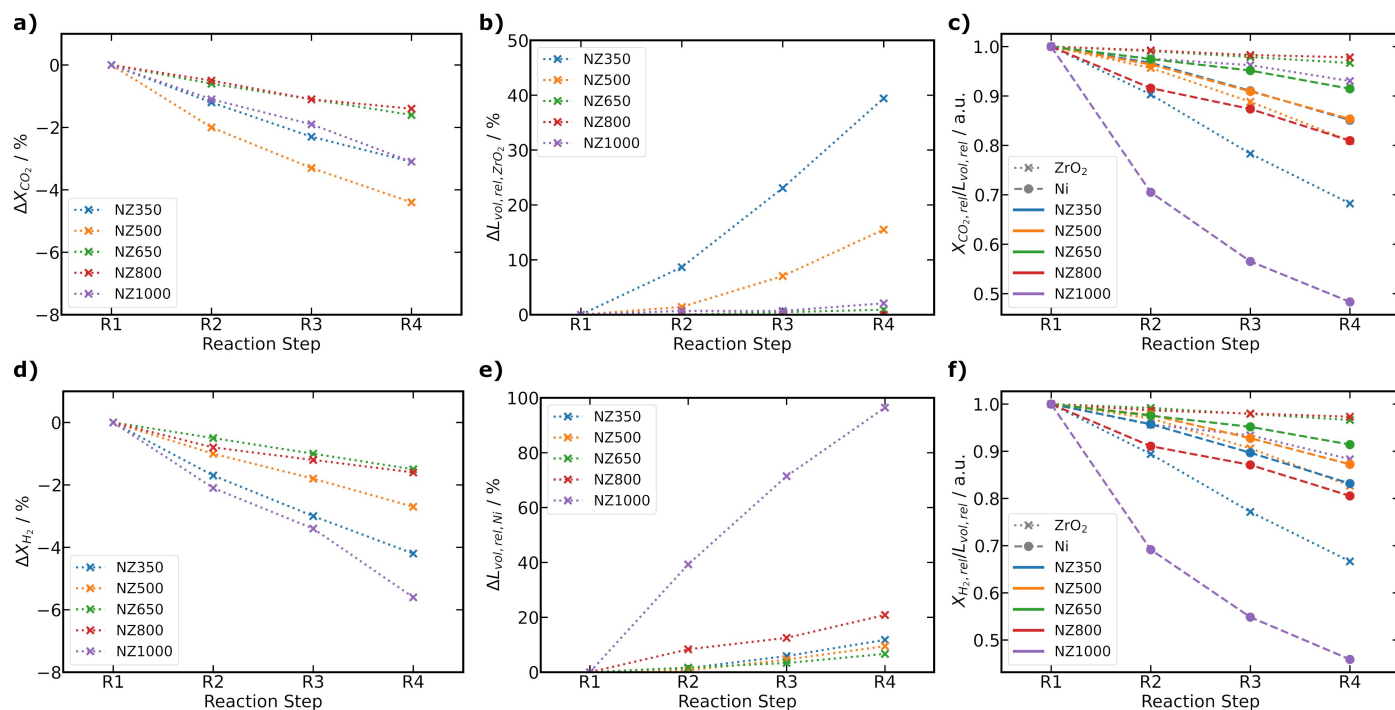


Fig. 7 (a) Changes of the  $X_{CO_2}$  for each reaction step as difference to the initial activity at R1. (b) Relative changes  $\Delta L_{vol,rel,ZrO_2}$  of the ZrO<sub>2</sub> crystallite size according eq. 6 depending on the reaction step referenced to R1. (c) Relative CO<sub>2</sub> conversion  $X_{CO_2,rel}$  (eq. 3) divided by the relative crystallite size  $L_{vol,rel}$  (eq. 5) for Ni and ZrO<sub>2</sub> phases. (d) Changes of the  $X_{H_2}$  for each reaction step as difference to the initial activity at R1. (e) Relative changes  $\Delta L_{vol,rel,Ni}$  of the Ni crystallite size according eq. 6 depending on the reaction step with R1 as reference. (f) Relative H<sub>2</sub> conversion  $X_{H_2,rel}$  (eq. 3) divided by the relative crystallite size  $L_{vol,rel}$  (eq. 5) for Ni and ZrO<sub>2</sub> phases.

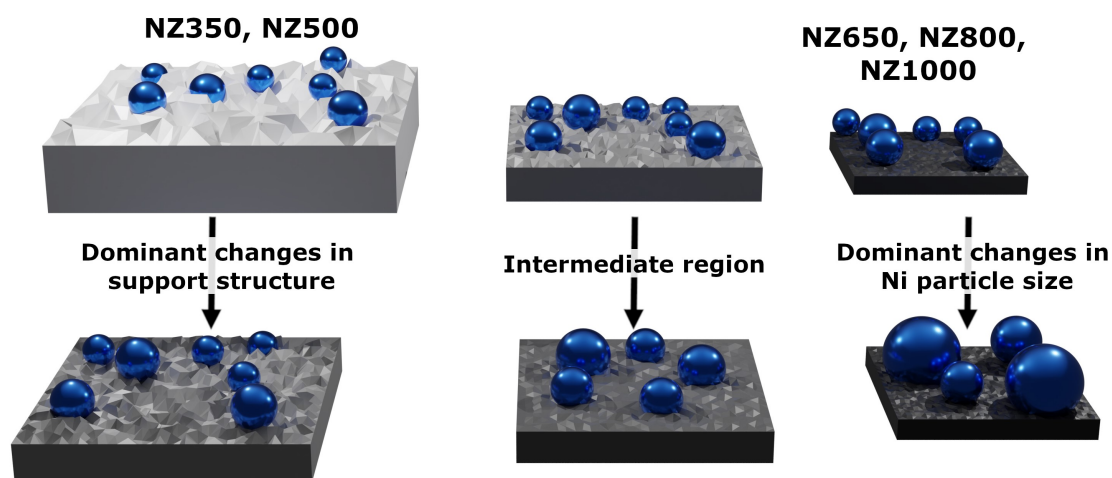


Fig. 8 Summary of the different proposed deactivation mechanism found by *operando* SPXRD. NZ350 and NZ500 show predominant ZrO<sub>2</sub> sintering and NZ650, NZ800 and NZ1000 dominant Ni sintering and an expected intermediate region as origin of deactivation. Ni blue, ZrO<sub>2</sub> grey. The grey color gradient illustrates changing textural properties of the support associated to a decrease in surface area and pore volume due to sintering.



NZ500 and NZ1000 show a slight deactivation after only 15 min at 500 °C under reaction conditions. The deactivation of NZ350 and NZ500 can be mainly related to textural changes of the ZrO<sub>2</sub> support. For NZ650, NZ800 and NZ1000 sintering of Ni particles appears to be the main reason for deactivation, with NZ650 and NZ800 showing highest stability among the tested samples. The stability of NZ650 and NZ800 might be related to the calcination temperature of the support, which were higher than the deactivation temperatures. The deactivation due to Ni sintering can be explained by a decrease in the active metal surface area. Literature studies have discussed changes of Ni nanoparticles, the support material and a complex interplay of the effects as reasons for deactivation.<sup>18,20–22</sup> However, deconvolution of these effects was not previously possible due to entirely *post mortem* analysis and thus the missing link with activity data provided by *operando* analysis as shown here. The sintering of the ZrO<sub>2</sub> support as shown in the present work might influence the catalyst stability in different ways. For Ni/ZrO<sub>2</sub> the associative mechanism for CO<sub>2</sub> methanation would require CO<sub>2</sub> adsorbates on the ZrO<sub>2</sub> support to take part in the reaction.<sup>7,8,10</sup> Therefore the amount of CO<sub>2</sub> adsorbed on the support is lower with decreasing support surface area leading to lower catalytic activity. Furthermore, it is possible that the textural changes of the support result in blocking of active Ni surface sites.

Additionally, SPXRD did not reveal formation of bulk NiO species and the quantitative phase analysis from Rietveld refinement matches the values obtained from elemental analysis. Thus, a fully reduced state of Ni throughout the experiment was assumed. The formation of surface NiO cannot be fully excluded by the applied methods, however due to the relatively large and similar Ni particle sizes in the catalyst series, similar redox properties are assumed for all catalysts. Possible deactivation due to formation of surface oxide species, if this occurs, should therefore be similar for all five catalysts due to identical reaction conditions. The significant quantity of H<sub>2</sub> in the feed makes formation of NiO species unlikely in any case, also according to previous studies using *operando* XAS.<sup>13,14,16,17</sup> In this case, NiO was only significantly present during H<sub>2</sub>-dropout tests. However, to unravel the different potential effects in more detail, further kinetic and spectroscopic studies of the active and deactivated catalysts would be required. In the present study, the focus was on presenting SPXRD as a single powerful and relatively routinely available method to differentiate thermal deactivation effects sensitive towards textural and crystallographic changes under *operando* conditions, with the possibility to distinguish support and metal nanoparticle changes.

## 4 Conclusions

In the present study, a bottom-up designed series of five different Ni/ZrO<sub>2</sub> catalysts was prepared *via* an adapted homogeneous deposition precipitation method. The catalysts are based on a commercial ZrO<sub>2</sub> support material, which was calcined at different temperatures prior to Ni deposition in order to change the textural properties, i.e., specific surface area and pore volume of the support systematically. The catalysts were characterized by conventional laboratory methods confirming a decrease

in surface area and pore volume with increasing support calcination temperature. Laboratory catalytic tests for CO<sub>2</sub> methanation showed comparable activity towards literature reported samples with *TOF* ranging from 2.3·10<sup>-2</sup> s<sup>-1</sup> to 2.6·10<sup>-3</sup> s<sup>-1</sup> at 250 °C. The catalysts exhibit similar Ni crystallite size (≈30 nm), dispersion and Ni loading. As the five catalysts essentially only differ by the support calcination temperature, the series is well suited for thermal deactivation studies.

During *operando* SPXRD studies with artificial thermal deactivation cycles, the catalysts showed different extent of deactivation with NZ350, NZ500 and NZ1000 showing the strongest activity loss and NZ650 and NZ800 the least. No crystalline phase changes were observed during thermal deactivation, but rather crystallite size changes of the ZrO<sub>2</sub> support and Ni nanoparticles. Those depend on the ZrO<sub>2</sub> calcination temperature along with the related textural properties. The five catalysts can be distinguished into samples that mainly deactivate due to changes of the support (NZ350 and NZ500), or changes of the Ni crystallite size (NZ650, NZ800 and NZ1000). The activity loss associated with Ni sintering can be explained by a decrease of the specific metal surface area. For the samples with dominant support sintering, either loss in CO<sub>2</sub> adsorption sites due to decreased support surface area or blocking of accessible metal surface area can be an explanation for the observed deactivation.

The presented approach of using *operando* SPXRD to study catalyst deactivation due to textural changes of the active site (metal nanoparticles) or the support is a valuable tool to understand temperature induced catalyst deactivation. In general, it can be emphasized to not only focus on changes of the metal nanoparticles, but also to consider the role of the support. This approach can be used in general to differentiate influences on catalyst stability under reaction conditions, which are not directly accessible with established methods including gas sorption or electron microscopy. The possibility to follow catalysts changes while they occur is especially important for potential dynamic process operation related to fluctuating renewable energy supply.<sup>51</sup> There, (ir)reversible changes of the catalyst structure are difficult to follow by *ex situ* characterization, but important to reveal for a fundamental catalyst understanding.<sup>51</sup> In future, promising developments of 3D spatially-resolved techniques, e.g., *operando* XRD or PDF tomography,<sup>52,53</sup> may provide additional information about the location of the textural changes with respect to the reactor position (e.g., due to hot-spots) or within specific catalyst particles. Additionally, recent progress in hard X-ray nanotomography methods allows to investigate textural sample changes *in situ* approaching routinely sub 50 nm resolution, which can be sufficient to reveal the processes observed here.<sup>54</sup>

## Author Contributions

Conceptualization, SW; data curation, MS, SW, TS; formal analysis, MS, SW; funding acquisition, TS; investigation, MS, SW, LK, TS; methodology, MS, SW; project administration, SW, JDG, TS; resources, JDG, TS; supervision, SW, JDG, TS; validation, MS, SW, JDG, TS; visualization, MS, SW; writing—original draft preparation, MS, SW; writing—review and editing, all authors.



## Conflicts of interest

There are no conflicts to declare.

## Acknowledgements

Gefördert durch die Deutsche Forschungsgemeinschaft (DFG)-406914011, funded by the Deutsche Forschungsgemeinschaft (DFG, German Research Foundation)-406914011. Dr. Marc-André Serrer is acknowledged for support of the laboratory catalyst testing experiments. We thank Dr. Eduardo Barbosa and Dr. Sumeet Kale (Karlsruhe Institute of Technology) for performing N<sub>2</sub> sorption experiments. Thanks to Heike Rudzik, Ken Luca Abel and Prof. Roger Gläser (Universität Leipzig) for providing ICP-OES analysis. We acknowledge Maximilian Franz and Prof. Dirk Enke (Universität Leipzig) for carrying out MIP experiments. We thank Dr. Florian Maurer for assistance in the graphical preparation of the schemes. This work was partly carried out with the support of the Karlsruhe Nano Micro Facility (KNMF), a Helmholtz Research Infrastructure at Karlsruhe Institute of Technology (KIT), which provided access to TEM instruments via proposal 2019-022-026980. The authors thank Xiaohui Huang, Dr. Reihaneh Pashminehazar and Prof. Christian Kübel (Karlsruhe Institute of Technology) for support with the TEM experiments. The authors acknowledge the Paul Scherrer Institut, Villigen, Switzerland for provision of synchrotron radiation beamtime at beamline X04SA-Materials Science of the Swiss Light Source and thank Dr. Nicola Casati, Michael Lange (Paul Scherrer Institut) and Shweta Sharma (Karlsruhe Institute of Technology) for support during the beamtime.

## Notes and references

- C. H. Bartholomew, *Applied Catalysis A: General*, 2001, **212**, 17–60.
- M. D. Argyle and C. H. Bartholomew, *Catalysts*, 2015, **5**, 145–269.
- J. Bremer and K. Sundmacher, *React. Chem. Eng.*, 2019, **4**, 1019–1037.
- J. Bremer, K. H. G. Rätze and K. Sundmacher, *AIChE Journal*, 2017, **63**, 23–31.
- M. Serrer, M. Stehle, M. L. Schulte, H. Besser, W. Pflüger, E. Saraci and J.-D. Grunwaldt, *ChemCatChem*, 2021, **13**, 3010–3020.
- M. A. Aziz, A. A. Jalil, S. Triwahyono and A. Ahmad, *Green Chem.*, 2015, **17**, 2647–2663.
- P. Frontera, A. Macario, M. Ferraro and P. Antonucci, *Catalysts*, 2017, **7**, 59.
- S. Rönsch, J. Schneider, S. Matthischke, M. Schlüter, M. Götz, J. Lefebvre, P. Prabhakaran and S. Bajohr, *Fuel*, 2016, **166**, 276–296.
- M. Younas, L. Loong Kong, M. J. Bashir, H. Nadeem, A. Shehzad and S. Sethupathi, *Energy Fuels*, 2016, **30**, 8815–8831.
- B. Miao, S. S. K. Ma, X. Wang, H. Su and S. H. Chan, *Catal. Sci. Technol.*, 2016, **6**, 4048–4058.
- B. Mutz, P. Sprenger, W. Wang, D. Wang, W. Kleist and J.-D. Grunwaldt, *Appl. Catal. A: Gen.*, 2018, **556**, 160–171.
- R. P. Struis, T. J. Schildhauer, I. Czekaj, M. Janousch, S. M. Biollaz and C. Ludwig, *Appl. Catal. A: Gen.*, 2009, **362**, 121–128.
- B. Mutz, H. W. Carvalho, S. Mangold, W. Kleist and J.-D. Grunwaldt, *J. Catal.*, 2015, **327**, 48–53.
- B. Mutz, A. M. Gänzler, M. Nachtegaal, O. Müller, R. Frahm, W. Kleist and J.-D. Grunwaldt, *Catalysts*, 2017, **7**, 279.
- C. Vogt, E. Groeneveld, G. Kamsma, M. Nachtegaal, L. Lu, C. J. Kiely, P. H. Berben, F. Meirer and B. M. Weckhuysen, *Nat. Catal.*, 2018, **1**, 127–134.
- M. A. Serrer, K. F. Kalz, E. Saraci, H. Lichtenberg and J.-D. Grunwaldt, *ChemCatChem*, 2019, **11**, 5018–5021.
- M.-A. Serrer, A. Gaur, J. Jelic, S. Weber, C. A. Fritsch, A. H. Clark, E. Saraci, F. Studt and J.-D. Grunwaldt, *Catal. Sci. Technol.*, 2020, **10**, 7542–7554.
- D. Beierlein, D. Häussermann, Y. Traa and E. Klemm, *Catal. Lett.*, 2021, **1**, 3.
- S. Abelló, C. Berruero and D. Montané, *Fuel*, 2013, **113**, 598–609.
- F. Koschany, D. Schlereth and O. Hinrichsen, *Appl. Catal. B Environ.*, 2016, **181**, 504–516.
- C. Mebrahtu, S. Perathoner, G. Giorgianni, S. Chen, G. Centi, F. Krebs, R. Palkovits and S. Abate, *Cat. Sci. Technol.*, 2019, **9**, 4023–4035.
- S. Ewald, M. Kolbeck, T. Kratky, M. Wolf and O. Hinrichsen, *Appl. Catal. A: Gen.*, 2019, **570**, 376–386.
- M. A. Bañares, *Catal. Today*, 2005, **100**, 71–77.
- R. Portela, S. Perez-Ferreras, A. Serrano-Lotina and M. A. Bañares, *Front. Chem. Sci. Eng.*, 2018, **12**, 509–536.
- I. L. Buurmans and B. M. Weckhuysen, *Nat. Chem.*, 2012, **4**, 873–886.
- B. Mutz, M. Belimov, W. Wang, P. Sprenger, M. A. Serrer, D. Wang, P. Pfeifer, W. Kleist and J.-D. Grunwaldt, *ACS Catal.*, 2017, **7**, 6802–6814.
- S. Brunauer, P. H. Emmett and E. Teller, *J. Am. Chem. Soc.*, 1938, **60**, 309–319.
- E. W. Washburn, *Phys. Rev.*, 1921, **17**, 273–283.
- P. R. Willmott, D. Meister, S. J. Leake, M. Lange, A. Bergamaschi, M. Böge, M. Calvi, C. Cancellieri, N. Casati, A. Cervellino, Q. Chen, C. David, U. Flechsig, F. Gozzo, B. Heinrich, S. Jäggi-Spielmann, B. Jakob, I. Kalichava, P. Karvonen, J. Krempasky, A. Lüdeke, R. Lüscher, S. Maag, C. Quitmann, M. L. Reinle-Schmitt, T. Schmidt, B. Schmitt, A. Streun, I. Vartiainen, M. Vitins, X. Wang and R. Wulschleger, *J. Synchrotron Rad.*, 2013, **20**, 667–682.
- C. Prescher and V. B. Prakapenka, *High Press. Res.*, 2015, **35**, 223–230.
- J.-D. Grunwaldt, M. Caravati, S. Hannemann and A. Baiker, *Phys. Chem. Chem. Phys.*, 2004, **6**, 3037–3047.
- H. M. Rietveld, *Acta Crystallogr.*, 1967, **22**, 151–152.
- H. M. Rietveld, *J. Appl. Crystallogr.*, 1969, **2**, 65–71.
- DIFFRAC.SUITE TOPAS - XRD Software Bruker, 2020, <https://www.bruker.com/de/products/x-ray-diffraction-and-elemental-analysis/>



- x-ray-diffraction/xrd-software/topas.html.
- 35 D. Balzar, *International union of crystallography monographs on crystallography*, 1999, **10**, 94–126.
- 36 D. K. Smith and W. Newkirk, *Acta Crystallogr.*, 1965, **18**, 983–991.
- 37 D. Rodic, V. Spasojevic, V. Kusigerski, R. Tellgren and H. Rundlof, *Phys. Status Solidi B Basic Res.*, 2000, **218**, 527–536.
- 38 J. Rouquette, J. Haines, G. Fraysse, A. Al-Zein, V. Bornand, M. Pintard, P. Papet, S. Hull and F. Gorelli, *Inorg. Chem.*, 2008, **47**, 9898–9904.
- 39 <http://topas.dur.ac.uk/topaswiki/doku.php?id=topas>, accessed on 18/10/2021.
- 40 O. E. Everett, P. C. Zonetti, O. C. Alves, R. R. de Avillez and L. G. Appel, *Int. J. Hydrog. Energy*, 2020, **45**, 6352–6359.
- 41 J. Martínez, E. Hernández, S. Alfaro, R. López Medina, G. Valverde Aguilar, E. Albiter and M. Valenzuela, *Catalysts*, 2018, **9**, 24.
- 42 D. Pandey and G. Deo, *J. Ind. Eng. Chem.*, 2016, **33**, 99–107.
- 43 J. Ren, X. Qin, J. Z. Yang, Z. F. Qin, H. L. Guo, J. Y. Lin and Z. Li, *Fuel Process. Technol.*, 2015, **137**, 204–211.
- 44 J. Gao, Y. Wang, Y. Ping, D. Hu, G. Xu, F. Gu and F. Su, *RSC Adv.*, 2012, **2**, 2358–2368.
- 45 K. Zhao, W. Wang and Z. Li, *J. CO2 Util.*, 2016, **16**, 236–244.
- 46 J. Tan, J. Wang, Z. Zhang, Z. Ma, L. Wang and Y. Liu, *Appl. Surf. Sci.*, 2019, **481**, 1538–1548.
- 47 X. Jia, X. Zhang, N. Rui, X. Hu and C. jun Liu, *Appl. Catal. B: Environ.*, 2019, **244**, 159–169.
- 48 Z. Liu, X. Ding, R. Zhu, Y. Li, Y. Wang, W. Sun, D. Wang, L. Wu and L. Zheng, *ChemistrySelect*, 2022, **7**, e202103774.
- 49 M. Králik, *Chem. Pap.*, 2014, **68**, 1625–1638.
- 50 M. Thommes, K. Kaneko, A. V. Neimark, J. P. Olivier, F. Rodriguez-Reinoso, J. Rouquerol and K. S. Sing, *Pure Appl. Chem.*, 2015, **87**, 1051–1069.
- 51 K. F. Kalz, R. Kraehnert, M. Dvoyashkin, R. Dittmeyer, R. Gläser, U. Krewer, K. Reuter and J.-D. Grunwaldt, *Chem-CatChem*, 2017, **9**, 17–29.
- 52 A. Vamvakeros, S. D. Jacques, M. Di Michiel, D. Matras, V. Middelkoop, I. Z. Ismagilov, E. V. Matus, V. V. Kuznetsov, J. Drnec, P. Senecal and A. M. Beale, *Nat. Commun.*, 2018, **9**, 1–11.
- 53 S. D. Jacques, M. Di Michiel, S. A. Kimber, X. Yang, R. J. Cernik, A. M. Beale and S. J. Billinge, *Nat. Commun.*, 2013, **4**, 1–7.
- 54 S. Weber, A. Diaz, M. Holler, A. Schropp, M. Lyubomirskiy, K. L. Abel, M. Kahnt, A. Jeromin, S. Kulkarni, T. F. Keller, R. Gläser and T. L. Sheppard, *Adv. Sci.*, 2022, **9**, 2105432.

