

Participant Projects (PPs)

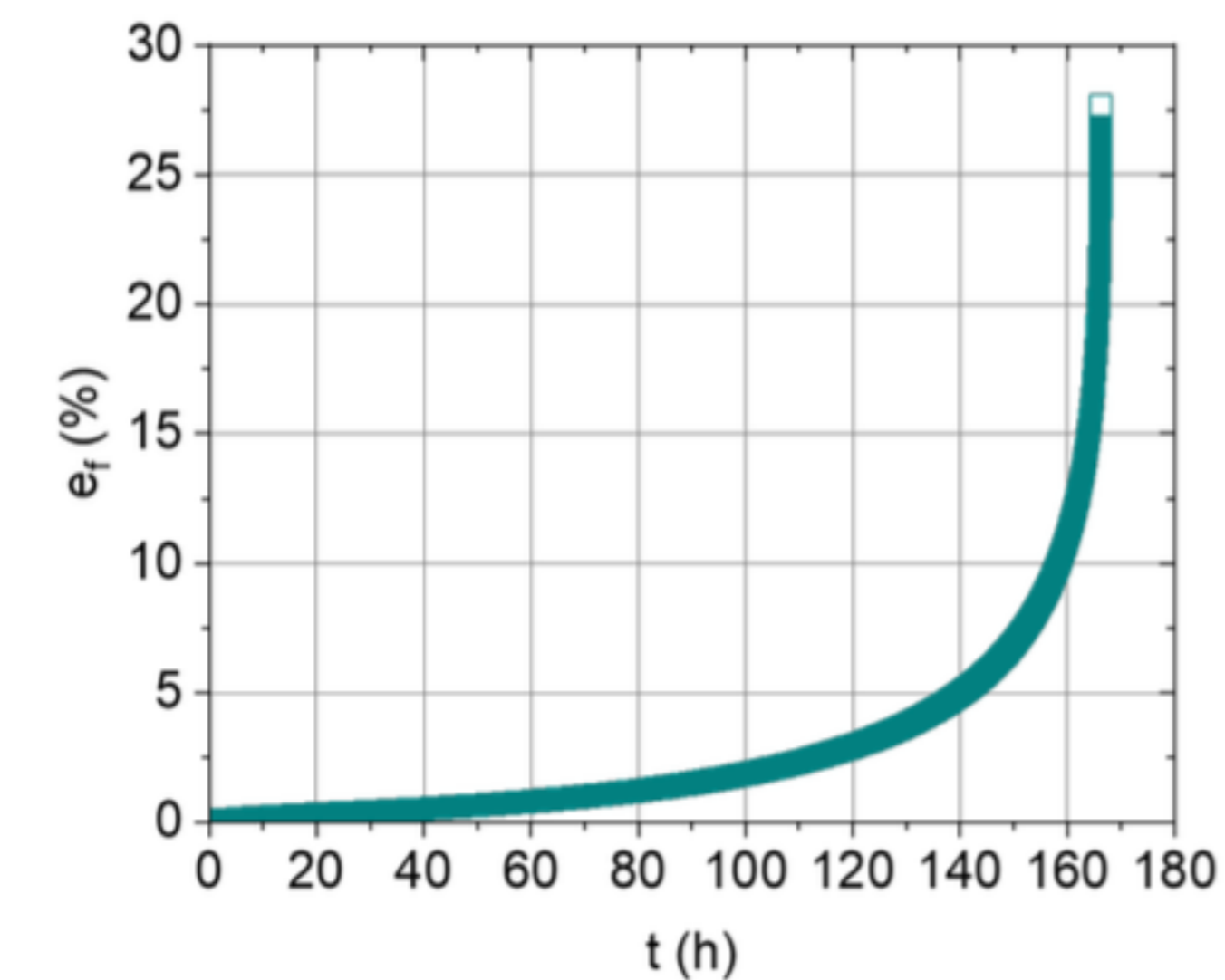
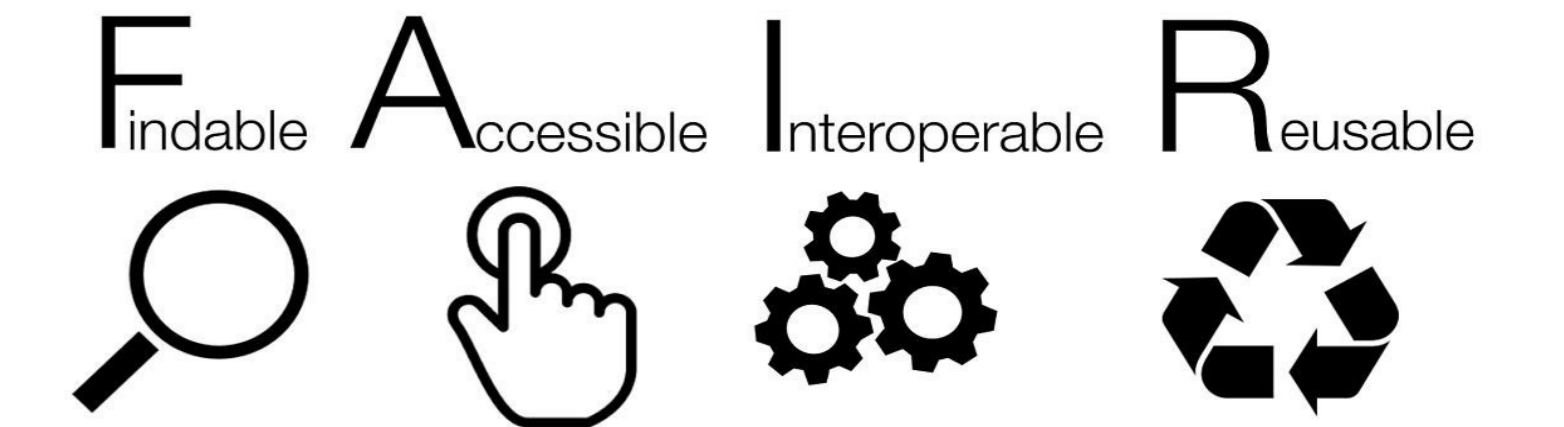
Research groups selected to provide typical use cases related to the management of research data.

PP18

- Bundesanstalt für Materialforschung und -prüfung
- Modelling of the mechanical behaviour of materials
- Lab results of material creep tests
- LIS file format

Our Aim

To shape scientific datasets obtained from the PPs from a data management perspective to conform to the FAIR principles, making use of the FAIR Digital Object (FAIR DO) concept, including structured metadata and storage solutions.

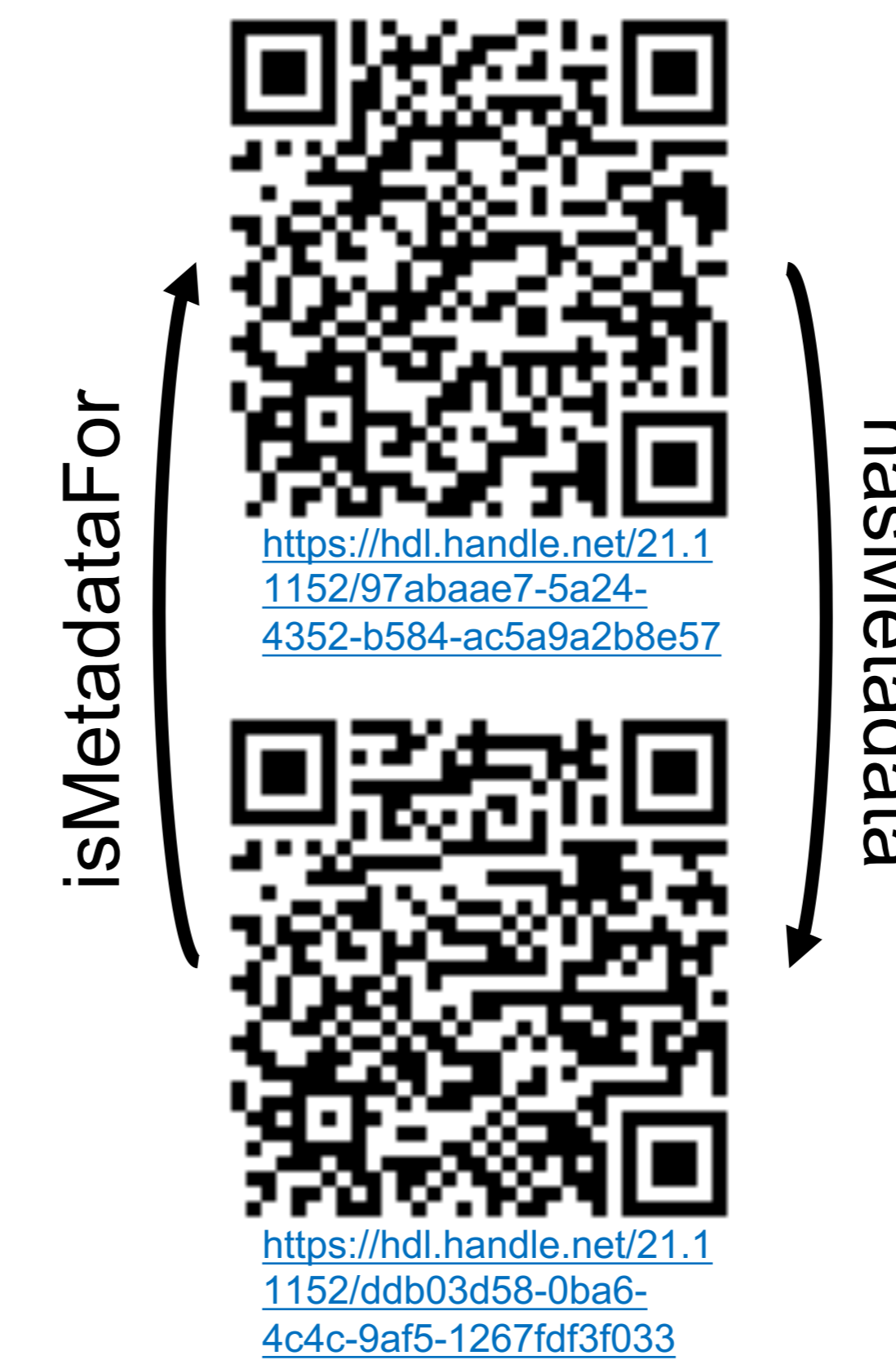
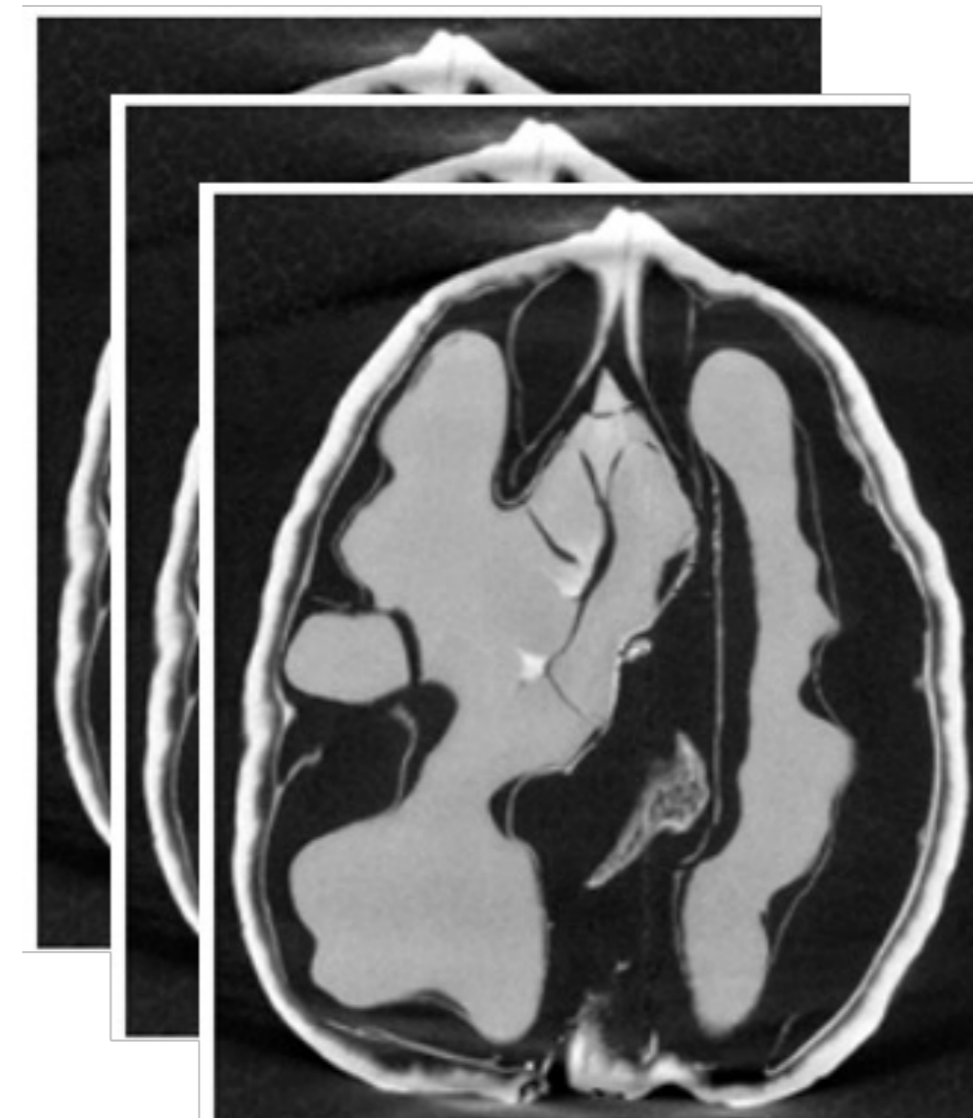


Creep strain vs. Time (CMSX-6, T = 980°C, σ = 200 MPa)



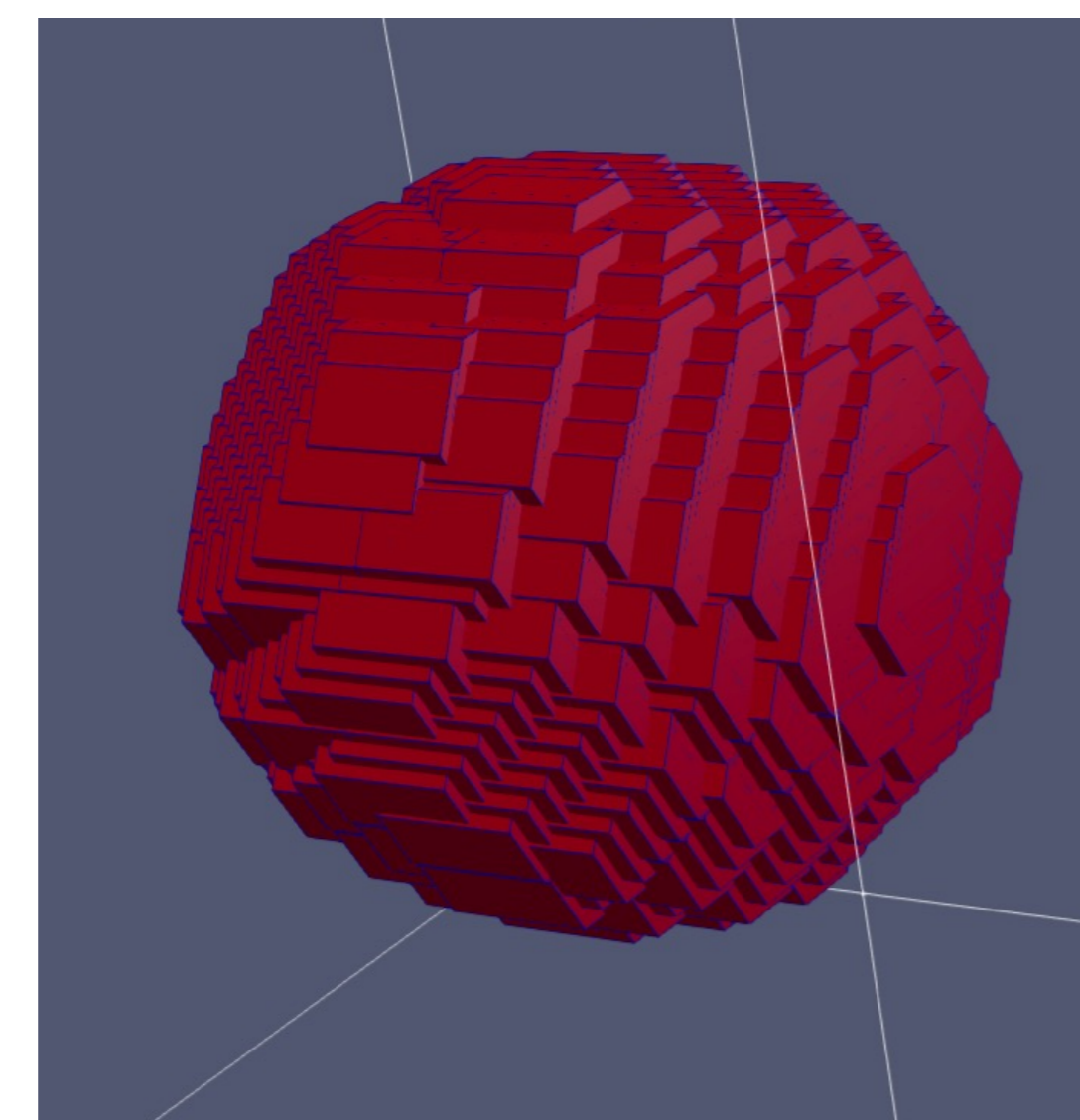
PP13

- University of Saarland
- Tomographic methods applied to generate data using SEM/X-rays
- Thousands of images per dataset
- Various file formats: tiff, txt...



PP07

- University of Stuttgart
- Image-based prediction of material properties
- Focus on synthetically-generated stochastic microstructures
- HDF5 formats in various sizes



Results

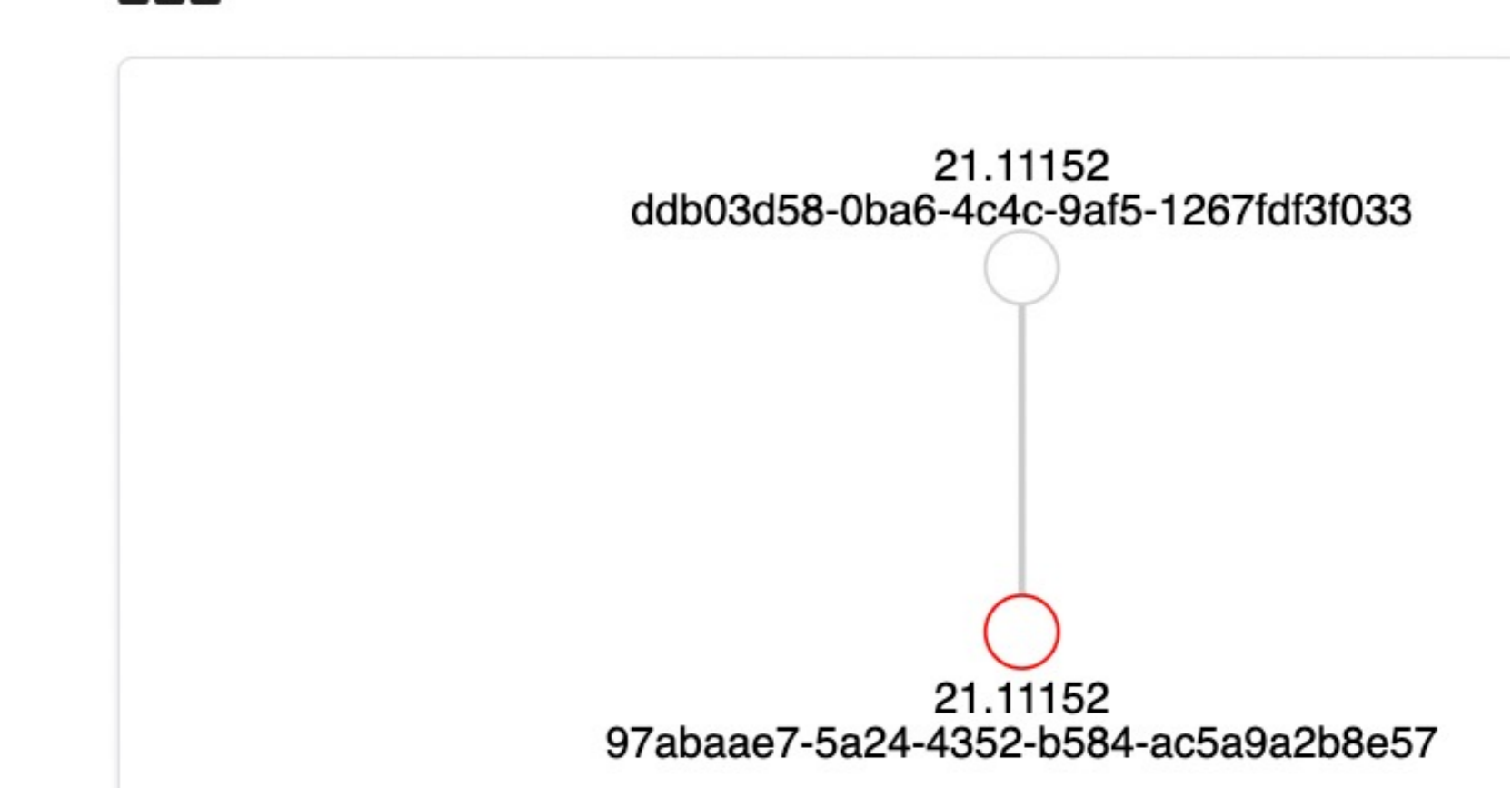
We shaped the reference datasets as FAIR DOs, with the following advantages:

- datasets and their metadata can be physically distributed
- datasets can be more Findable, Accessible, Interoperable, and Reusable
- datasets can be machine readable and actionable

Index	Type	Value
1	kernelInformationProfile	21T11148/b9b76f887845e32d297
2	dateModified	2022-09-15T00:00:03+00:00
3	21T11148/aaf5fbc7222c26950a	2022-09-15T00:00:03+00:00
4	digitalObjectLocation	https://zenodo.org/api/files/5b350336-00aa-4a26-a621-8feb902fd51/BCR425-280-1L1S
5	version	1.0.0
6	digitalObjectType	21.1152/6d9cd868-549d-4c53-9aac-16477673971c
7	contact	https://www.scc.kit.edu/ueberuns/dem.php
8	licenseUrl	https://creativecommons.org/licenses/by-nd/4.0/legalcode
9	21T11148/b415e16fbc4ca40f2270	http://vocabularies.unesco.org/thesaurus/mt6.55
10	# checksum	["md5sum": "01a83d135eb91011c1a68cfaeff96d1"]
100	HS_ADMIN	

<https://kit-data-manager.github.io/fairdoscope/?pid=21.1152/253e0f2a-4d4a-4916-a45a-ef7cd8ad1f9b>

FAIR DO Graph



<https://kit-data-manager.github.io/fairdoscope/?pid=21.1152/db03d58-0ba6-4c4c-9af5-1267fdf3f033>

Contact and feedback:
rossella.aversa@kit.edu