

Tania Barretto<sup>1</sup>, Melanie Müßle<sup>1</sup>, Eric Rentschler<sup>1</sup> and Prof. Dr.-Ing. Sascha Gentes<sup>1</sup>

<sup>1</sup>Institute for technology and management in construction, Department Deconstruction and Decommissioning of Conventional and Nuclear Buildings  
 tania.barretto@kit.edu, melanie.muessle@kit.edu, eric.rentschler@kit.edu



Sponsored by: **Federal Ministry of Education and Research - FORKA – Research for the dismantling of nuclear facilities**

Sponsoring number BMBF: 15S9420, Timeframe: 01.01.2020 – 31.12.2022

## Starting position

- Due to delays in the construction and commissioning of a German repository for medium and low level radioactive waste, waste stocks from several decades are now at the interim storage locations.
- The safe storage of these waste packages must be guaranteed for an indefinite period of interim storage.
- The usual practice in interim storage facilities is recurring inspections of the drums, which are almost exclusively carried out manually, without electronic comparison recordings and without machine documentation and archiving.
- The visual tests are highly subjective and therefore also prone to errors; In addition, the manual implementation is labor-intensive and the personnel is exposed to radiation.

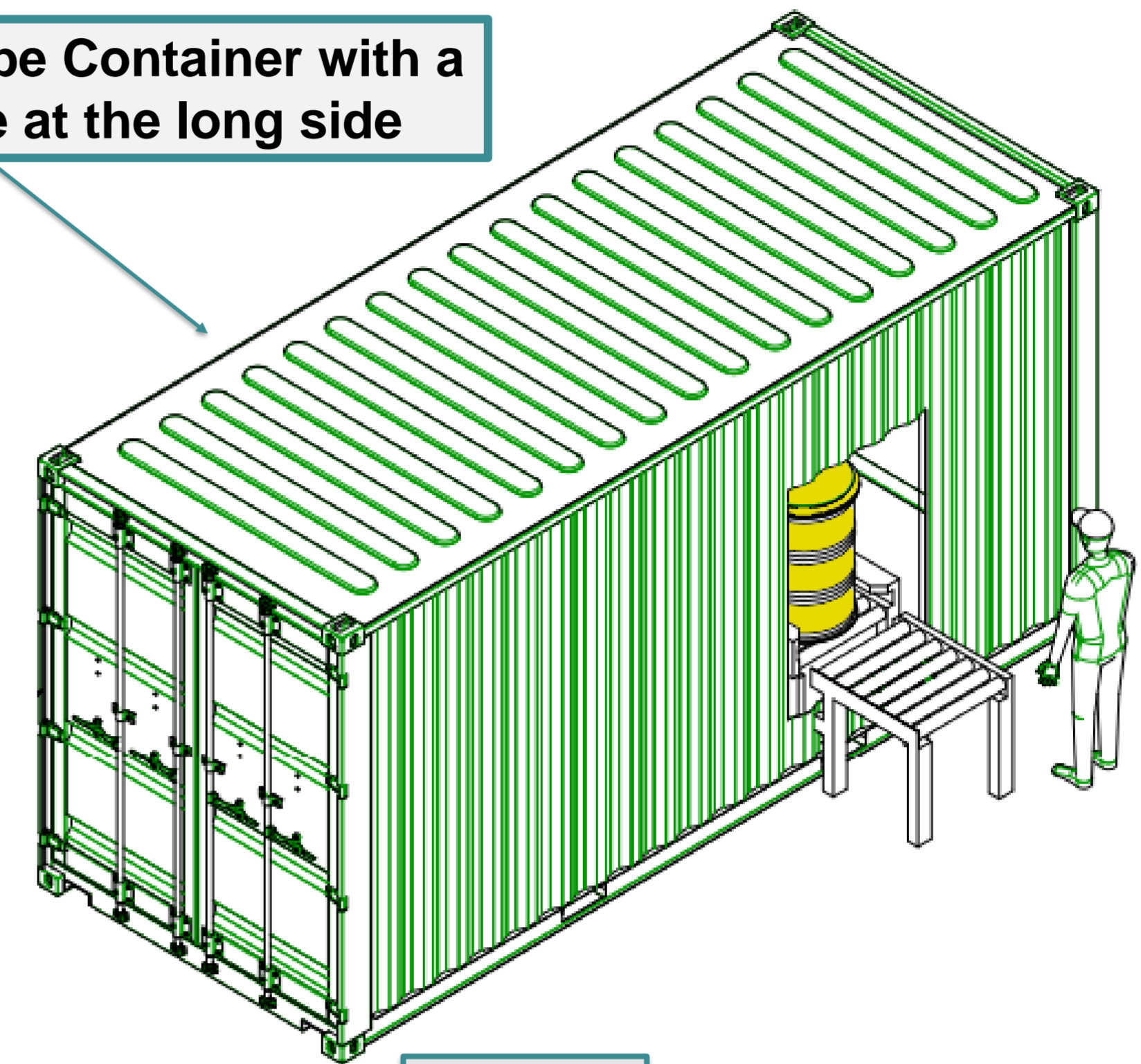
## Goal of the research project

- Development and conception of a mobile inspection unit that remotely and automatically handles and evaluates the entire drum surface, including lid and bottom, optically and analytically.
- Detection of geometry and corrosion damage to the drum at an early stage.
- Facilitation of the optical monitoring of the stored drums.
- Increase in occupational safety and optimization of recurring tests through standardization and reproducibility.

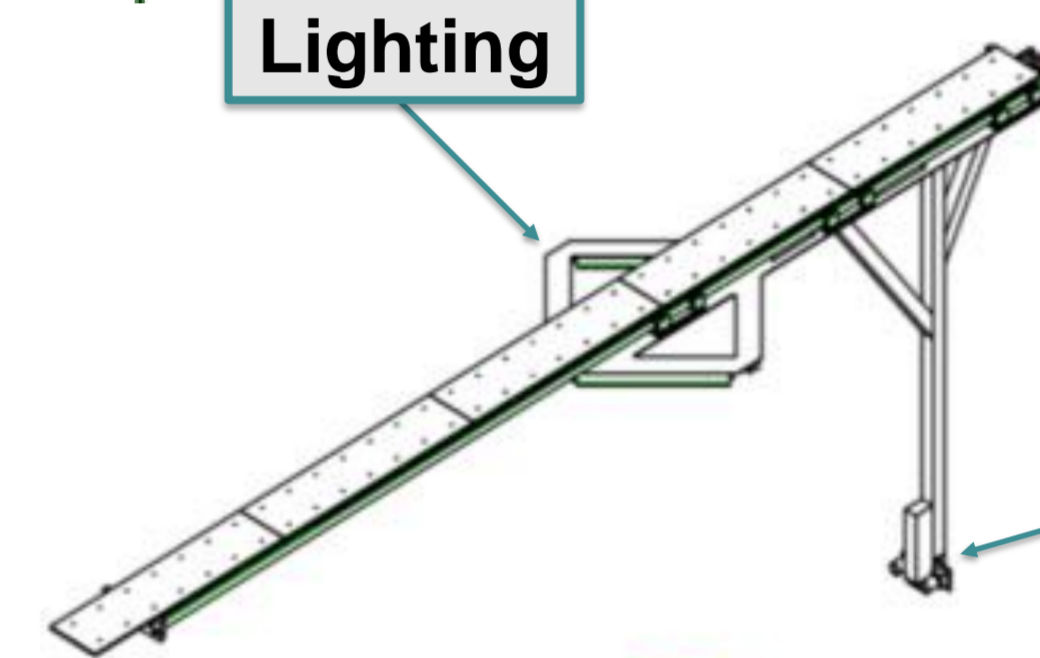
## Cooperation partners

- Institute of Technology and Management in Construction (TMB) – development, conception and construction of the inspection unit
- Institute of Photogrammetry und Remote Sensing (IPF) – selection and conception of the optical acquisition, as well as creation and implementation of the evaluation algorithms

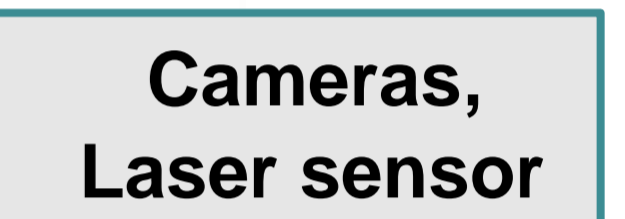
20 ft High Cube Container with a rolling gate at the long side



Lighting



Cameras, Laser sensor



200 L Drum



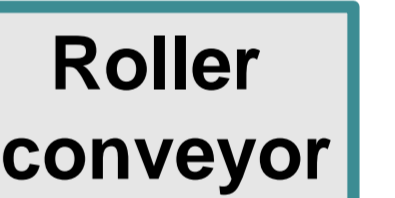
Drum tipping system



Turntable



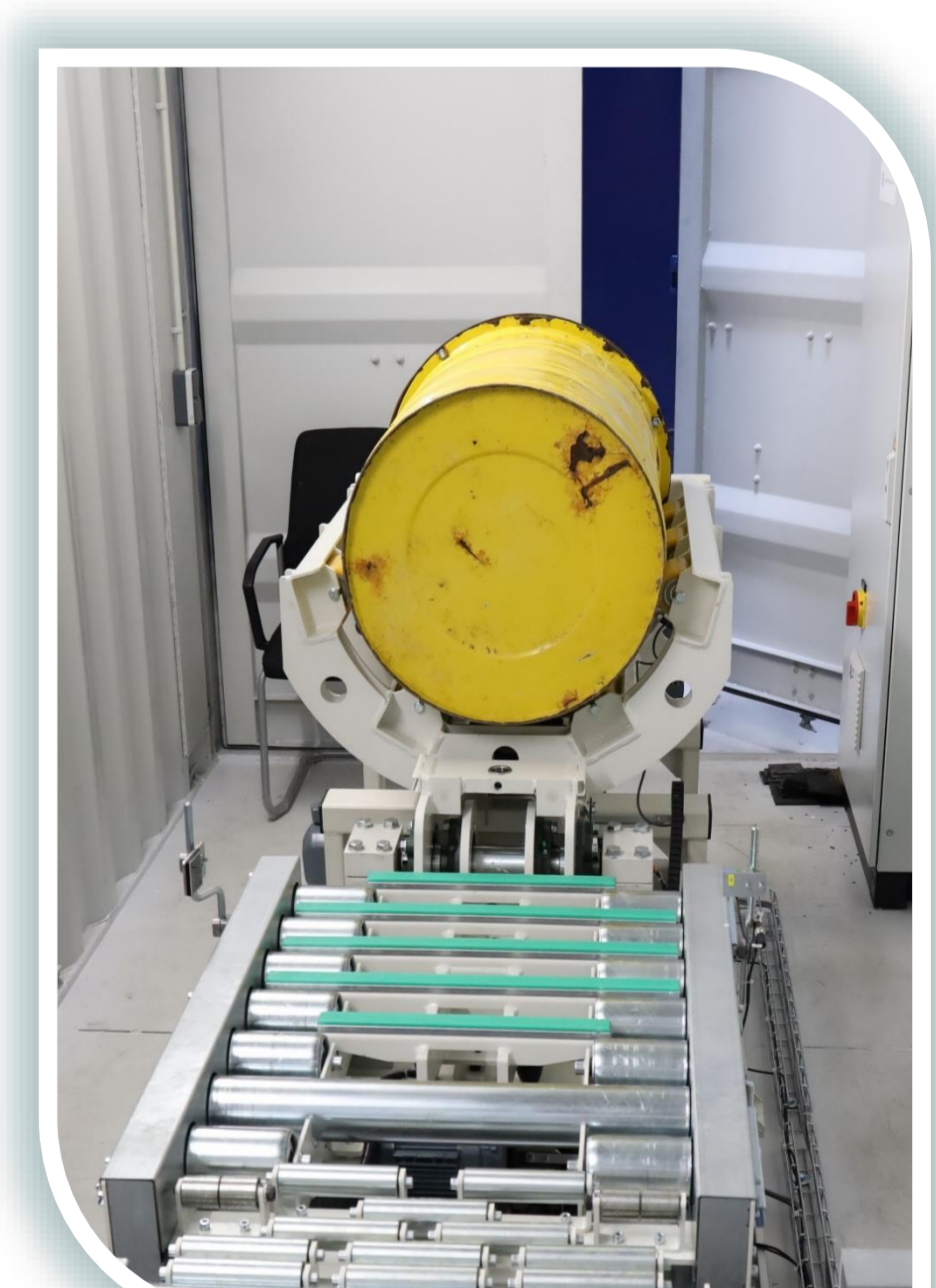
Roller conveyor



Drum on turntable



Drum on tipping system



Drum bottom

Height map of the unwound drum shell

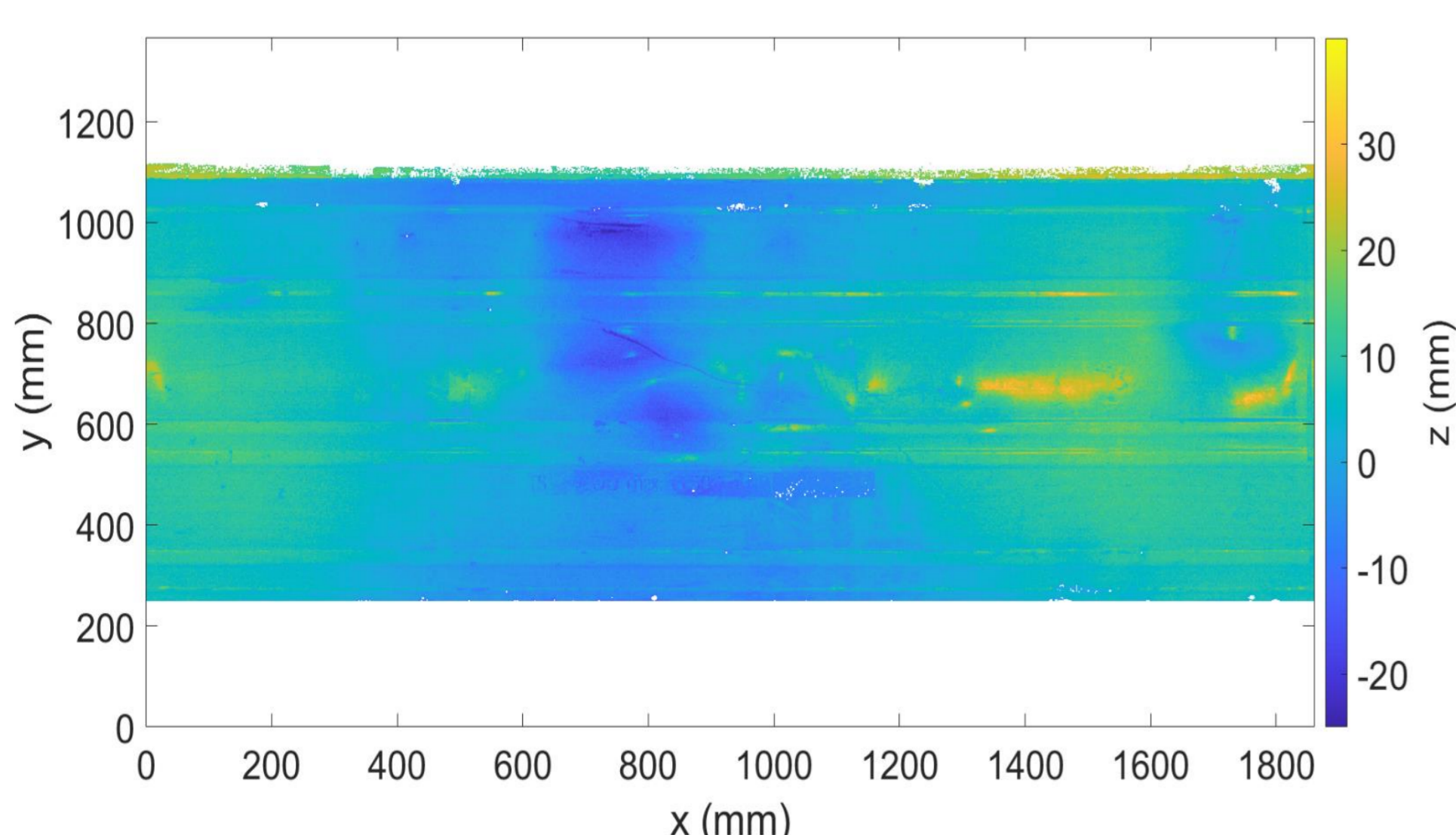


Image of the unwound drum shell

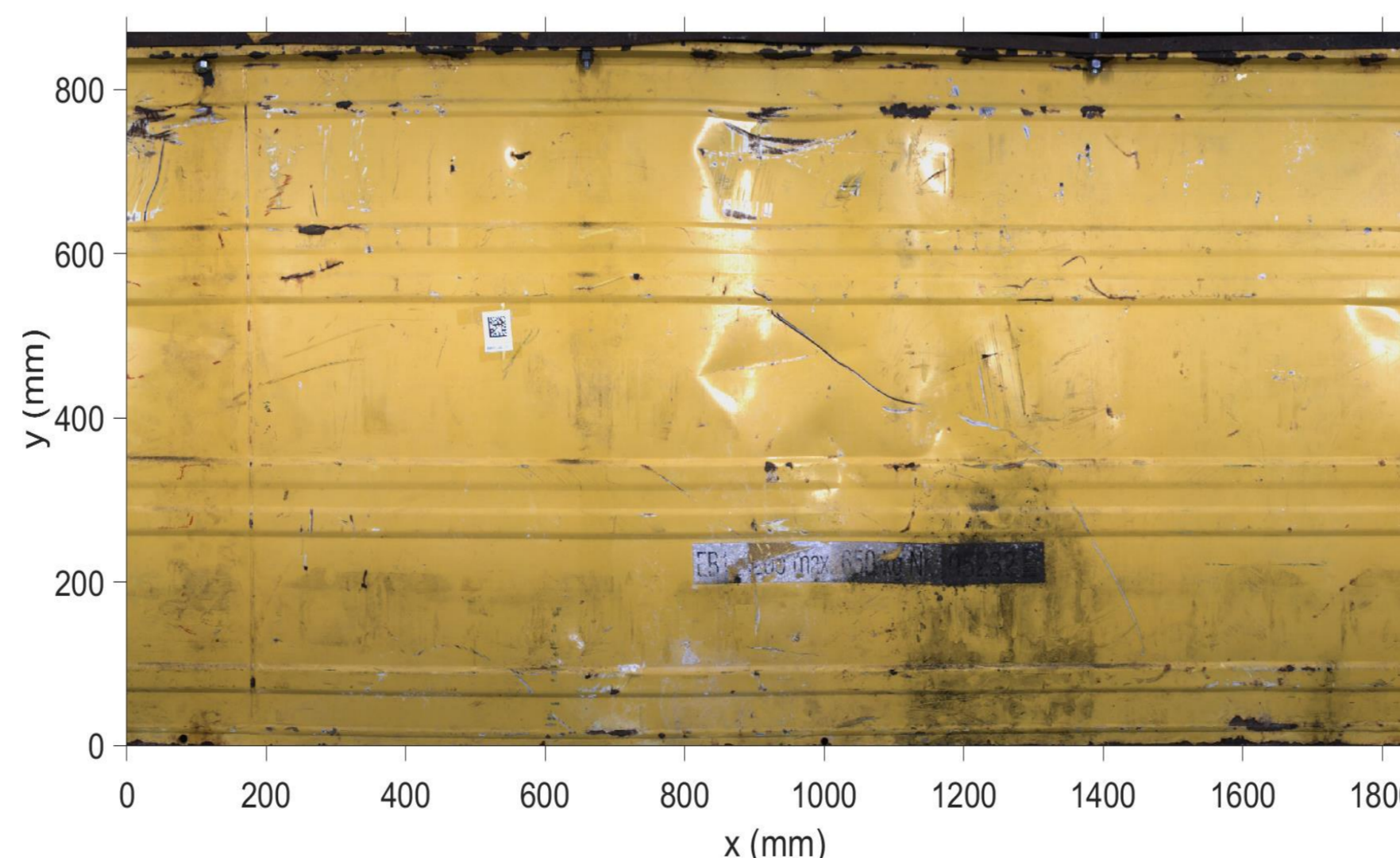


Image after classification

