



# Correction: Comparative analysis of locomotory organs and tracheal system in *Halarachne halichoeri*: implications for marine parasite habits

Anika Preuss<sup>1</sup> · Thomas van de Kamp<sup>2,3</sup> · Marcus Zuber<sup>2</sup> · Elias Hamann<sup>2</sup> · Lukas Brunkert<sup>1</sup> · Insa Herzog<sup>4</sup> · Kristina Lehnert<sup>4</sup> · Stanislav N. Gorb<sup>1</sup>

© The Author(s) 2026

**Correction:** *Zoomorphology* (2026) 145:8 <https://doi.org/10.1007/s00435-025-00765-9>

In this article Figs. 1, 3, 4 and 5 appeared incorrectly and have now been corrected in the original publication. For completeness and transparency, the old incorrect versions are displayed below.

---

The original article can be found online at <https://doi.org/10.1007/s00435-025-00765-9>.

---

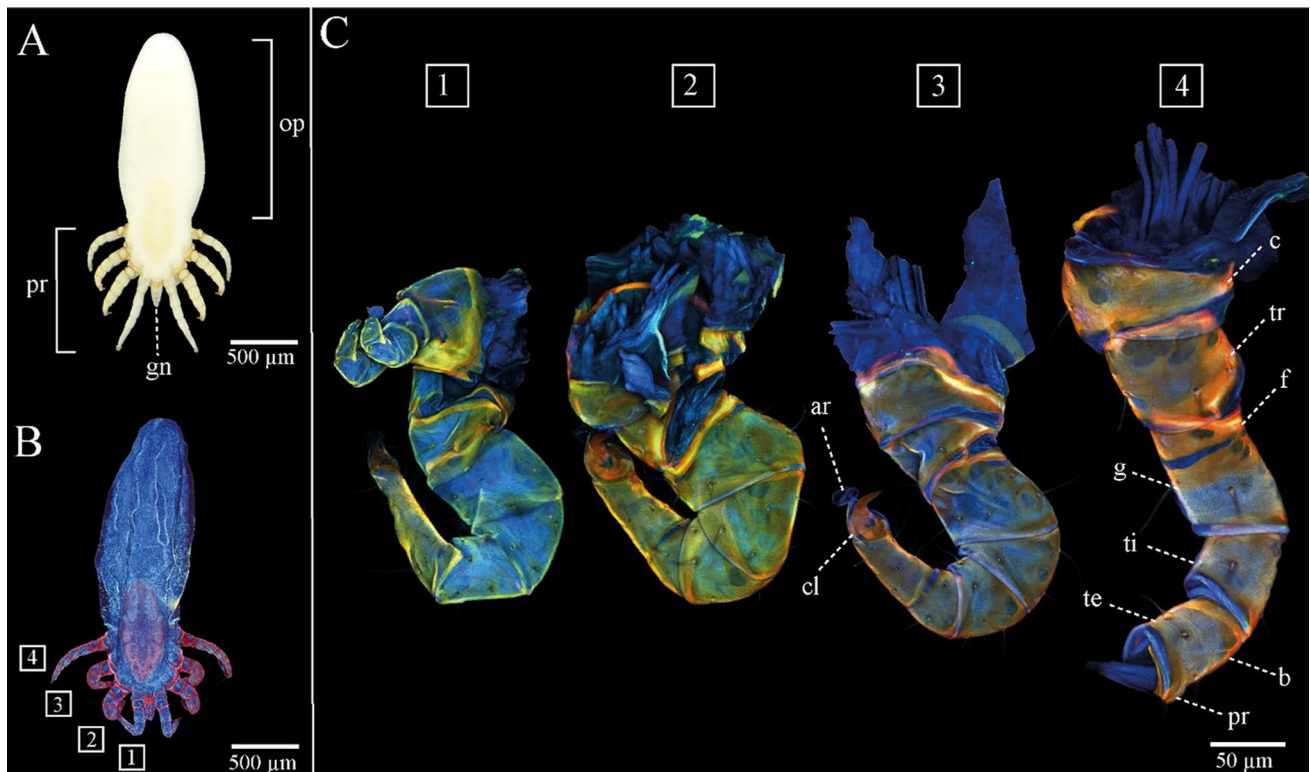
✉ Anika Preuss  
apreuss@zoologie.uni-kiel.de

<sup>1</sup> Department of Functional Morphology and Biomechanics  
Zoological Institute, Kiel University, Am Botanischen Garten  
1-9, 24118 Kiel, Germany

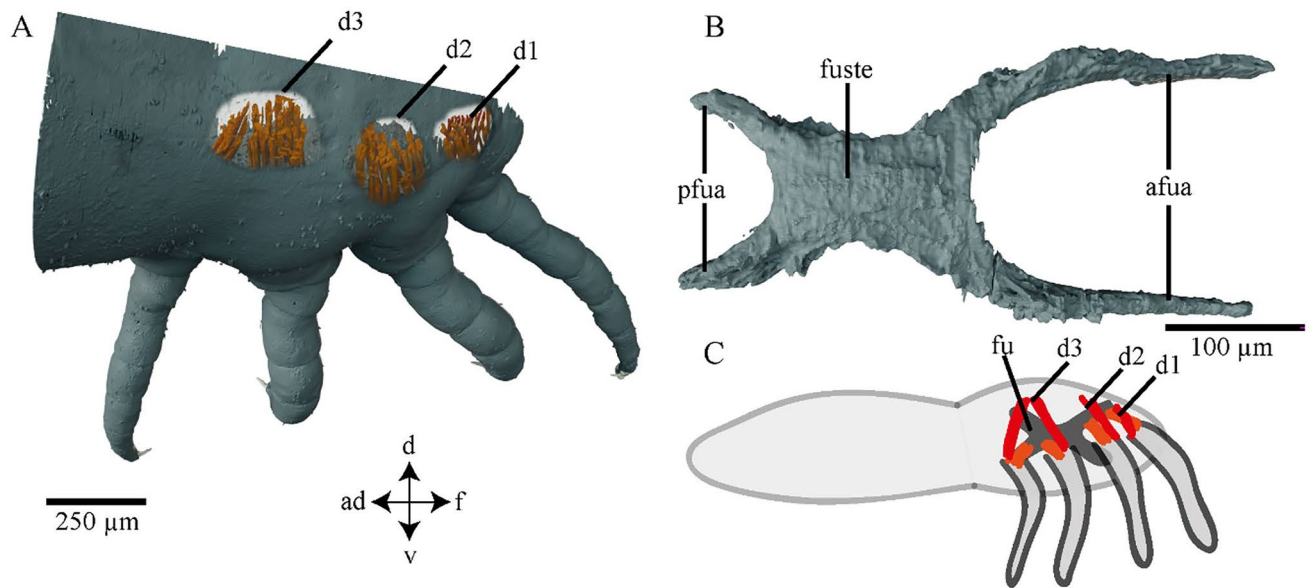
<sup>2</sup> Institute for Photon Science and Synchrotron Radiation  
(IPS), Karlsruhe Institute of Technology, Hermann-von-  
Helmholtz-Platz 1, 76344 Eggenstein-Leopoldshafen,  
Germany

<sup>3</sup> Laboratory for Applications of Synchrotron Radiation (LAS),  
Karlsruhe Institute of Technology (KIT), Kaiserstr.12,  
76131 Karlsruhe, Germany

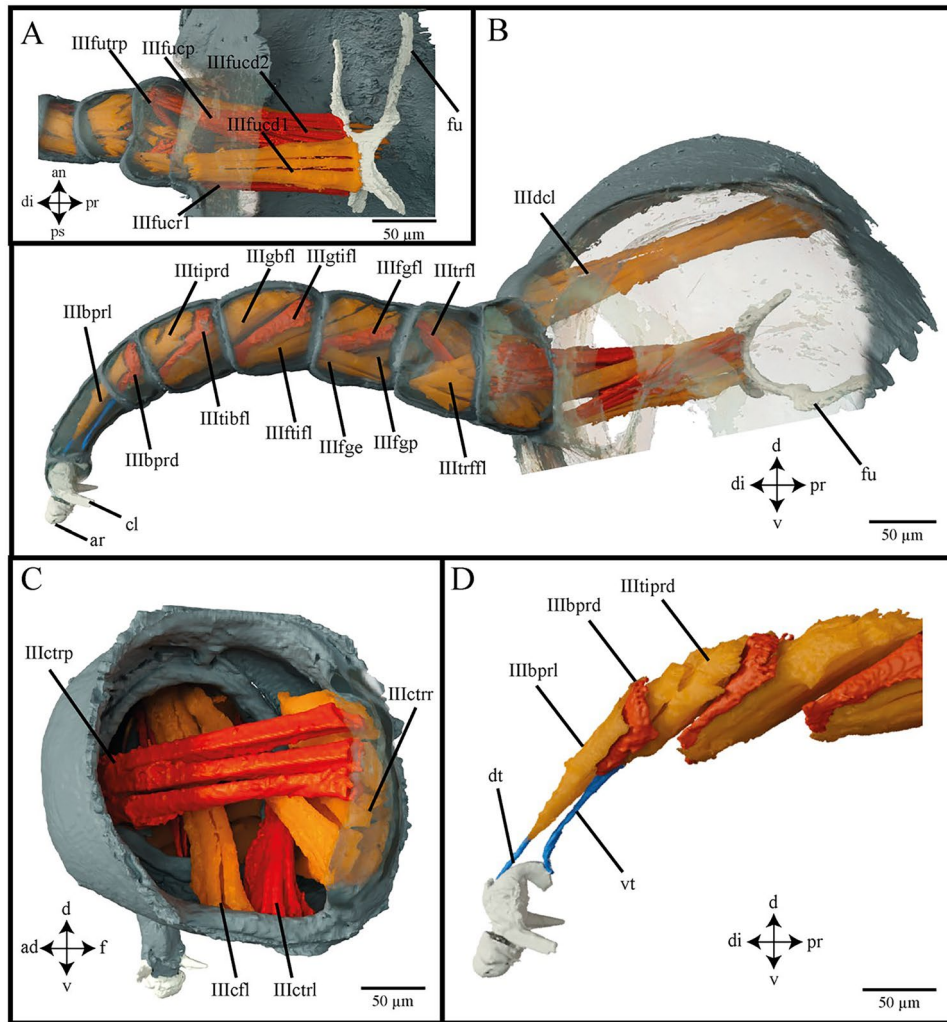
<sup>4</sup> Institute for Terrestrial and Aquatic Wildlife Research,  
University of Veterinary Medicine Hannover, Büsum,  
Germany



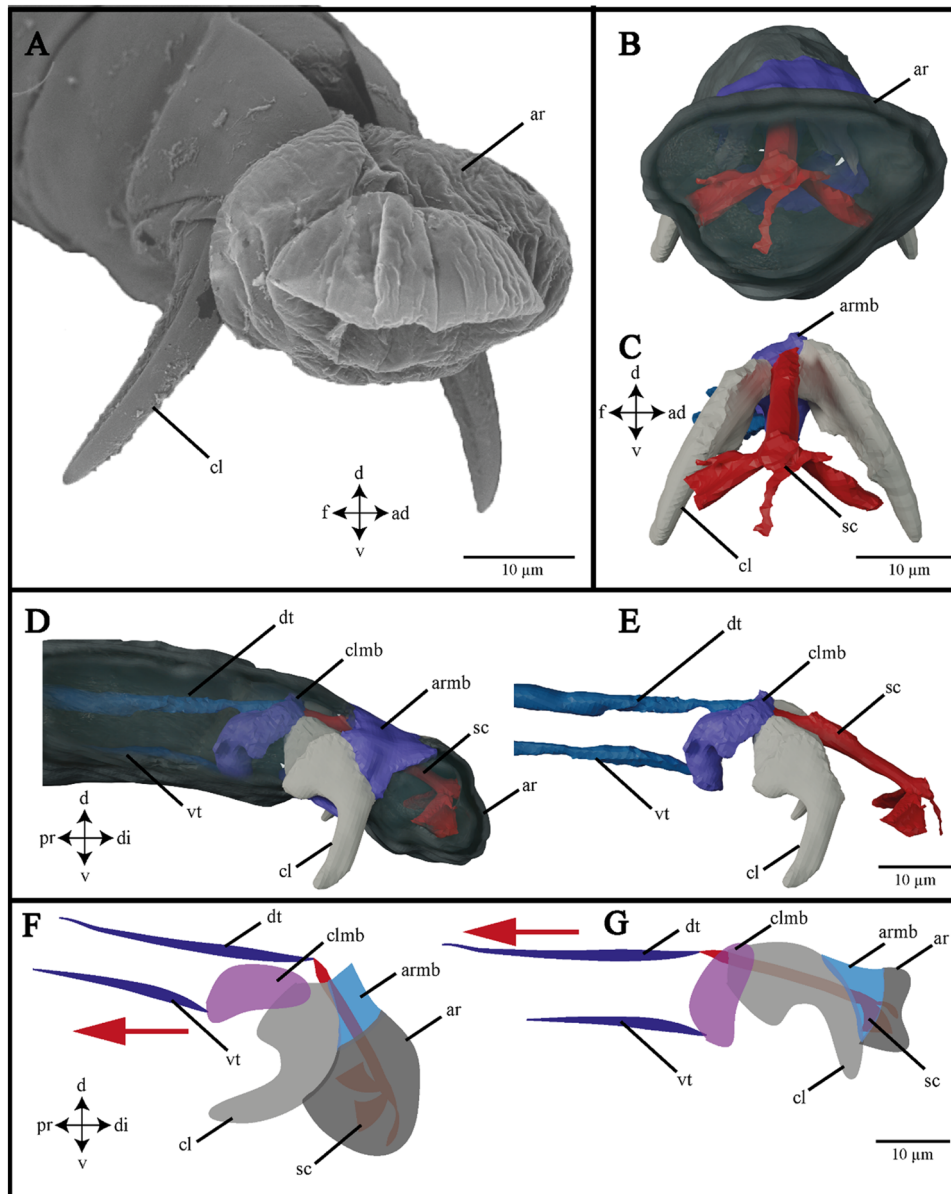
**Fig. 1** *Halarachne halichoeri* and its leg morphology. **A** Light microscopic image of the general habitus from dorsal view depicting opisthosoma, prosoma and gnathosoma. **B** CLSM image from dorsal view. **C** CLSM image of all four legs numbered from anterior to posterior (see B). An enlarged CLSM image of the arolium can be found in the Supplementary Material S1. Abbreviations: arolium (ar), basitarsus (b), coxa (c), claw (cl), femur (f), gnathosoma (gn), opisthosoma (op), genu (g), pretarsus (pr), prosoma (pm), telotarsus (te), tibia (ti), trochanter (tr)



**Fig. 2** Attachment sites of intrinsic musculature of *H. halichoeri*. **A** Lateral view at dorsalia (ds1, ds2, ds3). **B** Dorsal view at the furca including furca sternum and furca arms. **C** Schematic drawing of an adult mite from lateral view including intrinsic muscles connected to the furca (orange) and to the body cuticle (red). Abbreviations: anterior (an), anterior furca arm (afua), dorsal (do), dorsalia 1, 2 & 3 (ds1, ds2 & ds3), furca (fu), furca sternum (fuste), posterior (ps), posterior furca arm (pfua), ventral (v)



**Fig. 3** Intrinsic and extrinsic leg musculature of *H. halichoeri*. **A** Dorsal view of intrinsic musculature. **B** Lateral view of intrinsic and extrinsic musculature with transparent cuticle. **C** Median view of intrinsic and extrinsic musculature. **D** Lateral view of extrinsic musculature without cuticle. Abbreviations: anterior (an), arolium (ar), cl (claw), dorsal (do), distal (di), dorsal tendon (dt), furca (fu), posterior (ps), proximal (px), ventral (v), ventral tendon (vt). Reconstructions of all other legs can be found in the Supplementary Material S2



**Fig. 4** Morphology of the arolium and mode of arolium attachment in *H. halichoeri*. **A** Scanning electron microscopy image of the pretarsus, extended arolium and claws. **B** 3D reconstruction of the morphology of the arolium from distal view with transparent arolium. **C** 3D reconstruction of the morphology of the arolium from distal view without arolium walls. **D** 3D reconstruction of the pretarsus including claws and arolium with transparent cuticle from lateral view. **E** 3D reconstruction of the pretarsus including claws and arolium without cuticle from lateral view. **F** Model of the claw movement when pulling the ventral tendon in the proximal direction. **G** Model of the sclerite movement when pulling the dorsal tendon in the proximal direction. Abbreviations: anterior (an), arolium (ar), arolium membrane (armb), claw (cl), claw membrane (clmb), dorsal (do), distal (di), dorsal tendon (dt), posterior (ps), proximal (px), sclerite (sc), ventral (v) ventral tendon (vt)

The original article has been corrected.

**Open Access** This article is licensed under a Creative Commons Attribution 4.0 International License, which permits use, sharing, adaptation, distribution and reproduction in any medium or format, as long as you give appropriate credit to the original author(s) and the source, provide a link to the Creative Commons licence, and indicate if changes were made. The images or other third party material in this article are included in the article's Creative Commons licence, unless

indicated otherwise in a credit line to the material. If material is not included in the article's Creative Commons licence and your intended use is not permitted by statutory regulation or exceeds the permitted use, you will need to obtain permission directly from the copyright holder. To view a copy of this licence, visit <http://creativecommons.org/licenses/by/4.0/>.

**Publisher's Note** Springer Nature remains neutral with regard to jurisdictional claims in published maps and institutional affiliations.