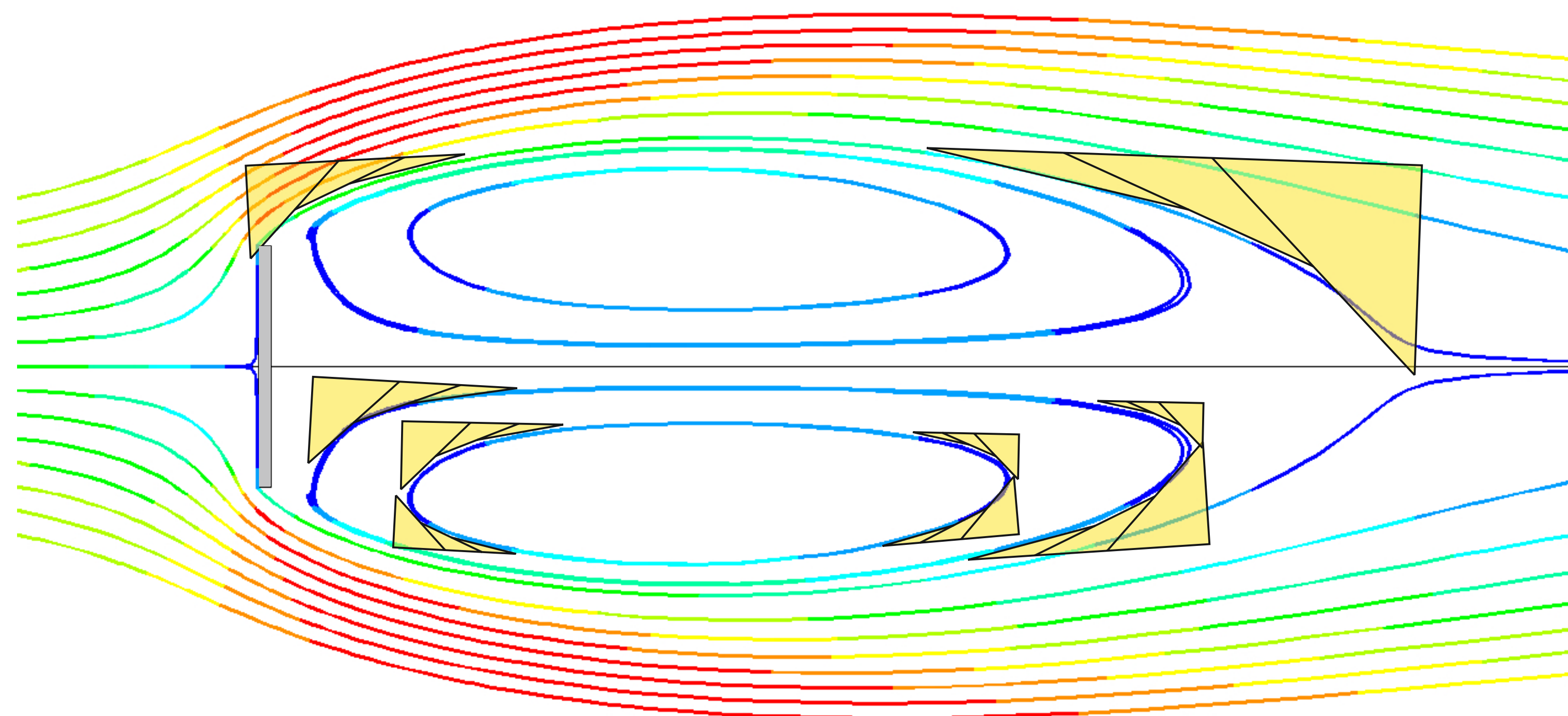


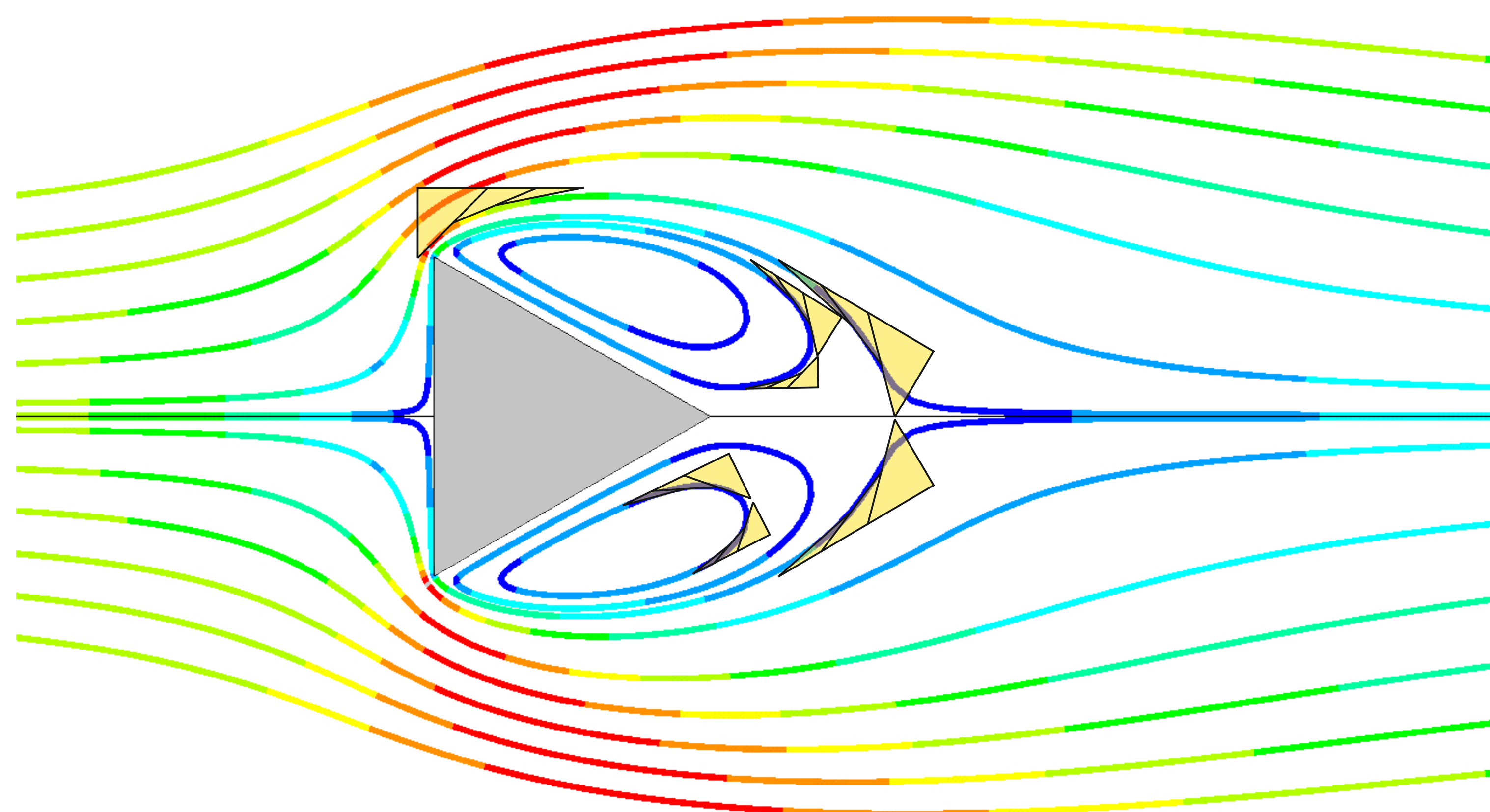
FEM-Verifikation der Bachkieselform von Wirbeln hinter unvorteilhaft geformten, umströmten Körpern

C. Mattheck, I. Tesari

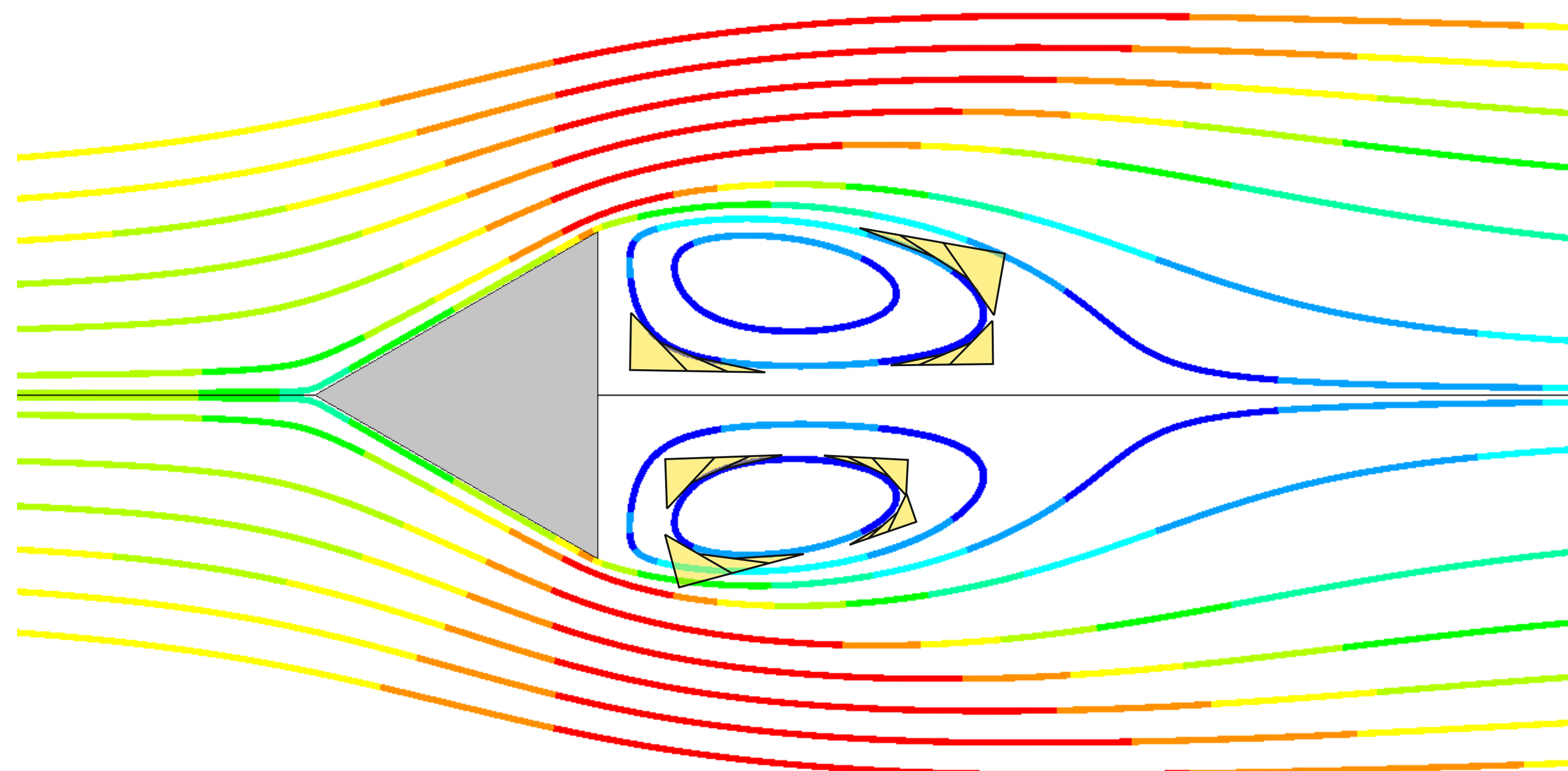
Platte
Re=1E4



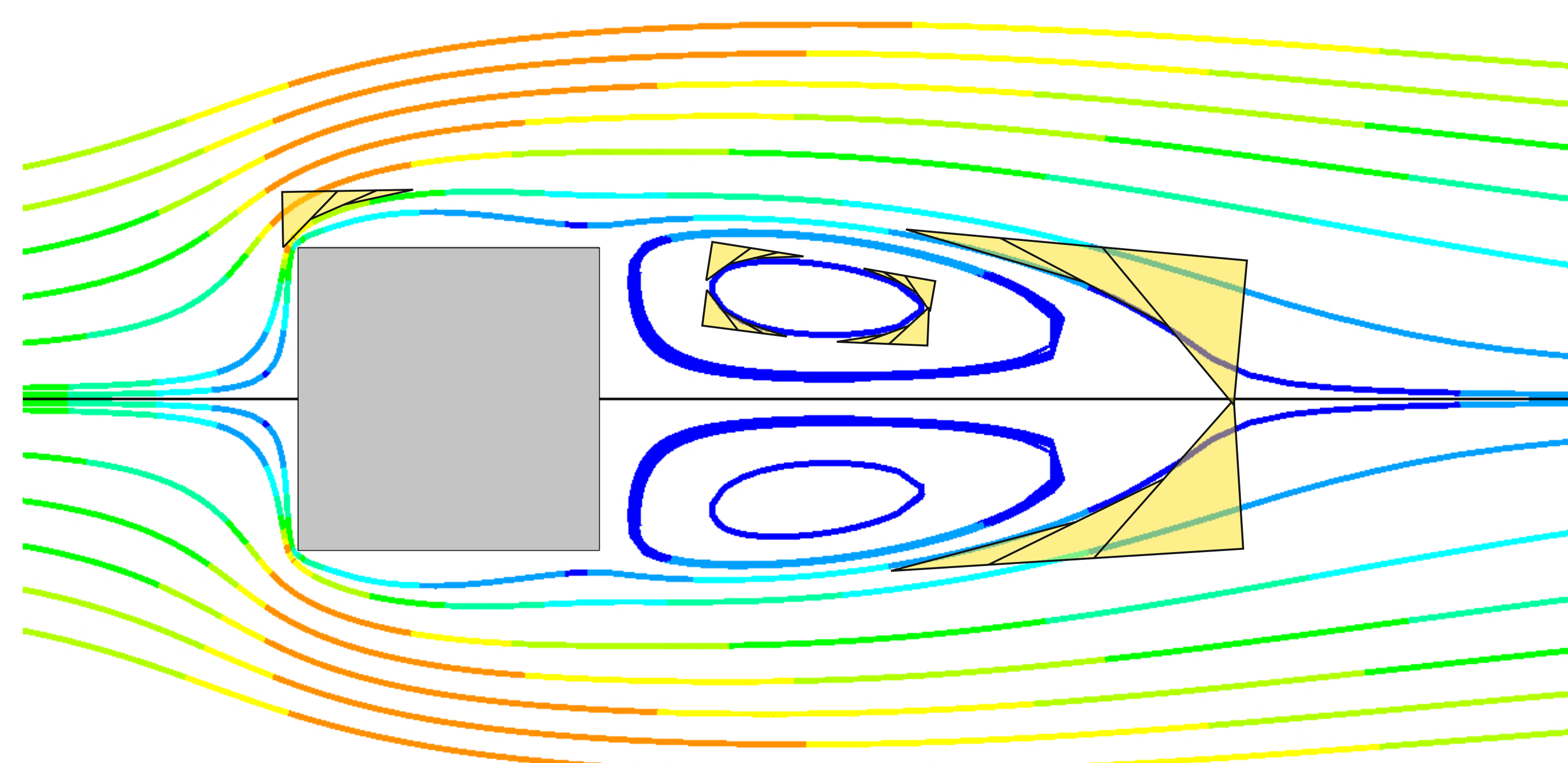
Prisma1
Re=4000



Prisma2
Re=4000



Quadrat
Re=1E4



Fazit: Die Strömung hüllt nicht-optimale Körper in einen Mantel aus bachkieselförmigen Konturen.

24. Juni 2015