



Institut für Meteorologie und Geophysik, Universität Innsbruck
F. Obleitner, J. Vergeiner, E. Griesser, A. Gohm
IMK-IFU Garmisch-Partenkirchen / Forschungszentrum Karlsruhe (KIT)
P. Suppan, S. Emeis, K. Schäfer



- „ALPNAP“
- Messungen
- Modellrechnungen
- projektspezifische Produkte



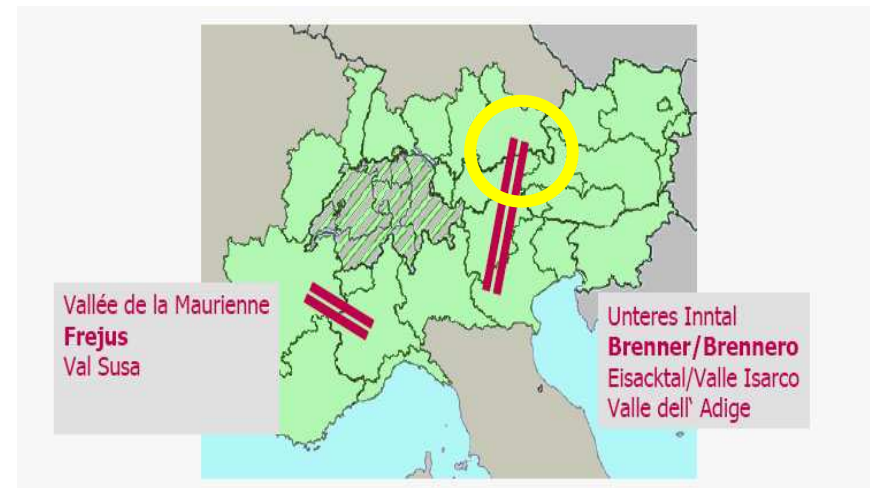
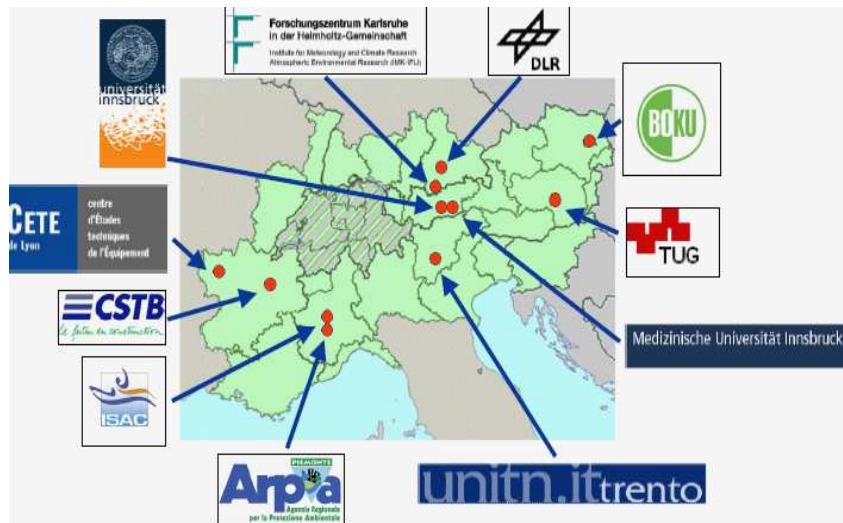


ALPNAP (Interreg IIB, 2005–2008)



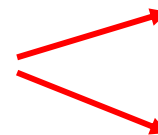
„Monitoring and Minimisation of **Traffic-Induced Noise and Air Pollution** Along Major Alpine Transport Routes“

D. Heimann (DLR); P. Seibert (BOKU)



BOKU, TU-GRAZ, IMGI

IMGI-Kofinanzierung: Tiroler Landesregierung



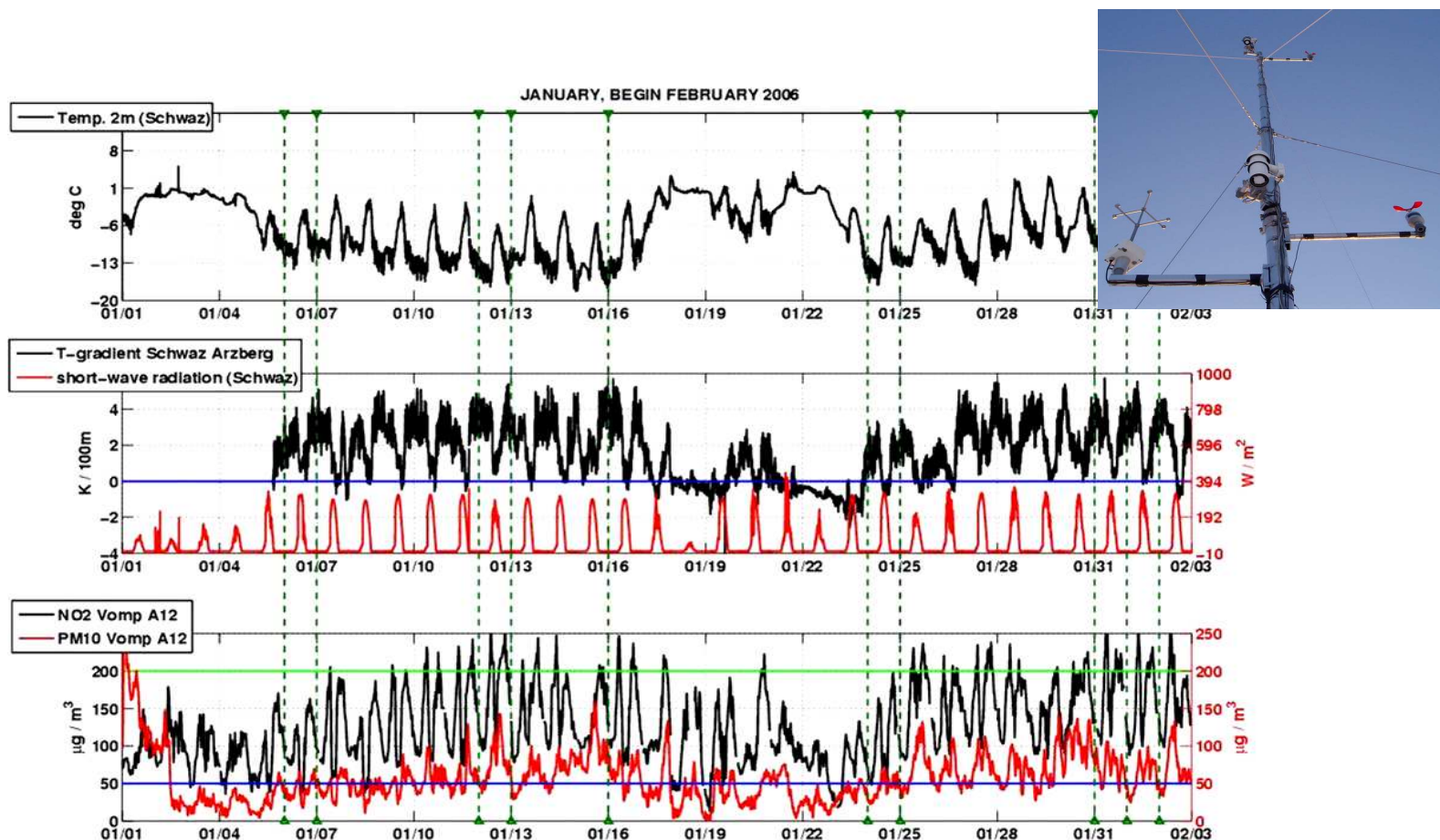
Feldmessungen

Kurzfrist – Prognosemodell

IMGI – ALPNAP – Feldmessungen, Winter 2005/2006

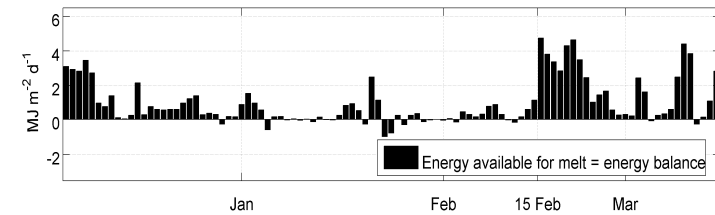
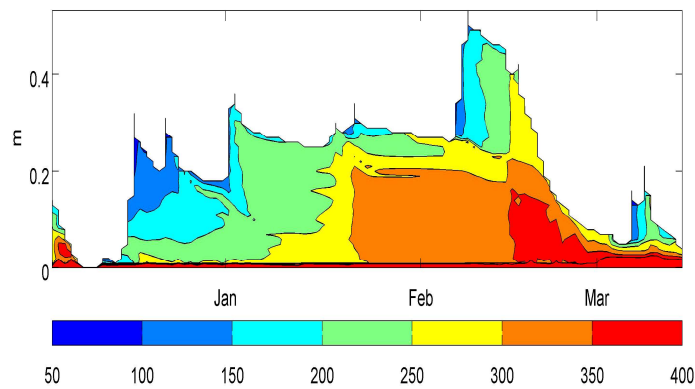
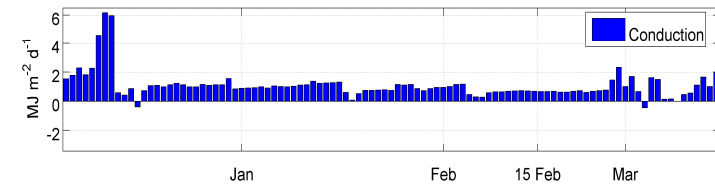
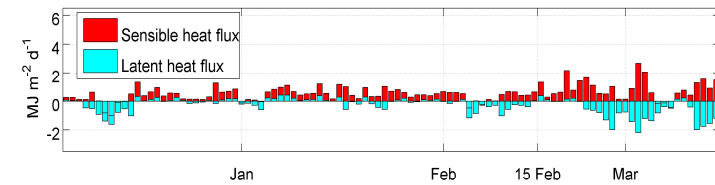
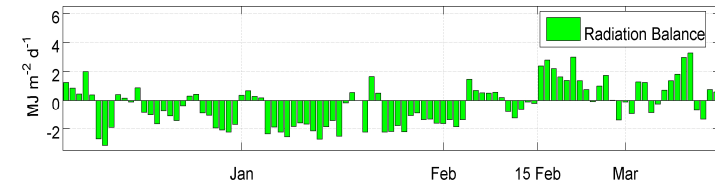
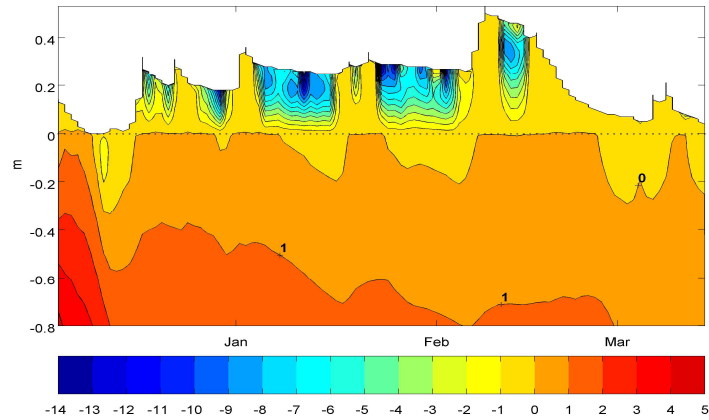
(Sammeln, Aufbereiten bestehener Daten)

Wetterstationen im Talquerschnitt Schwaz (Unterinntal)

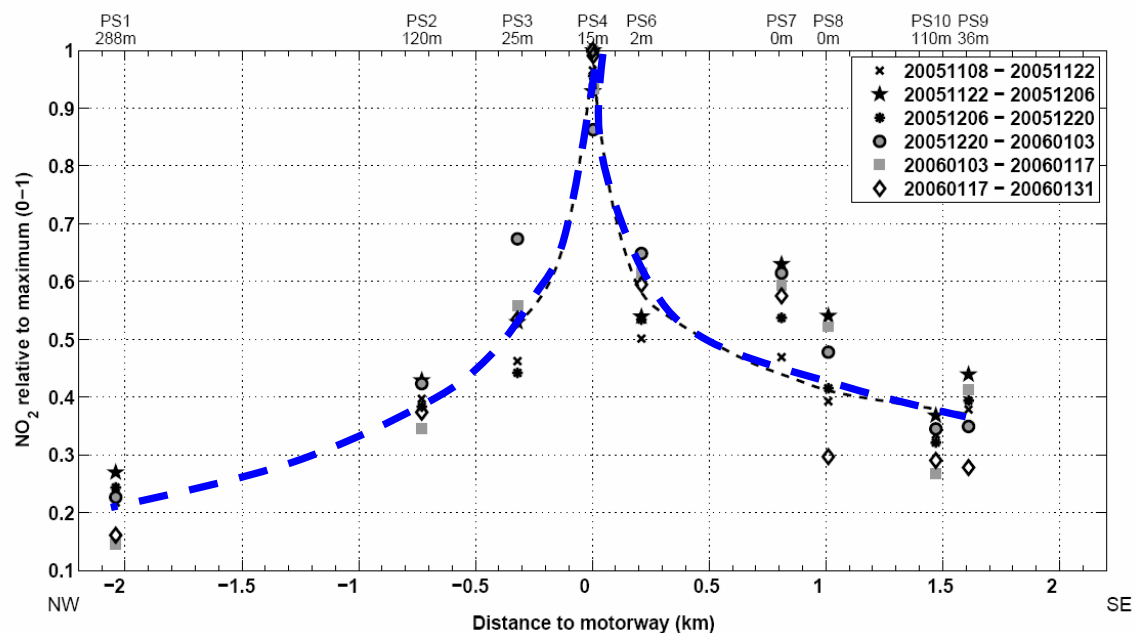
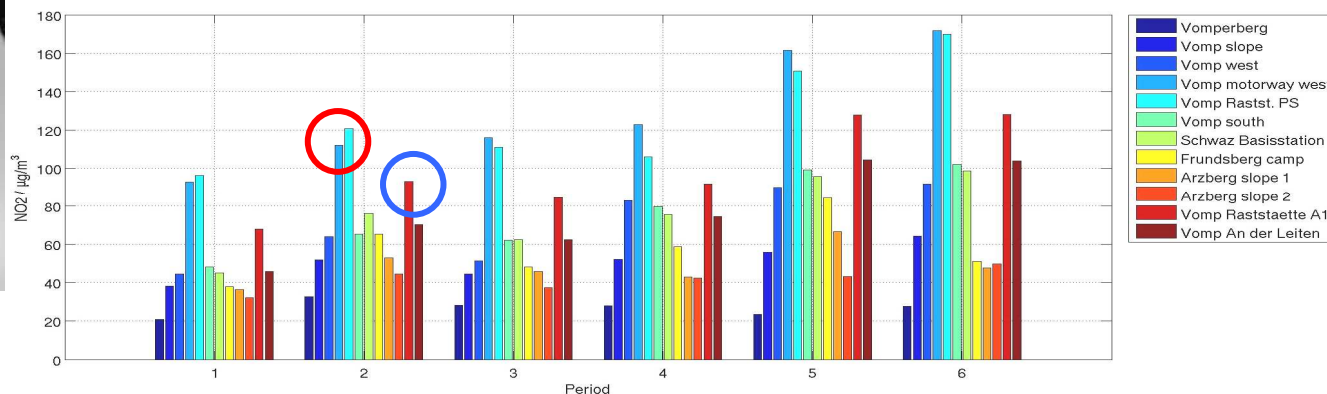




IMGI – ALPNAP – Feldmessungen (Mikrometeorologie, Energiebilanz der Schneedecke)

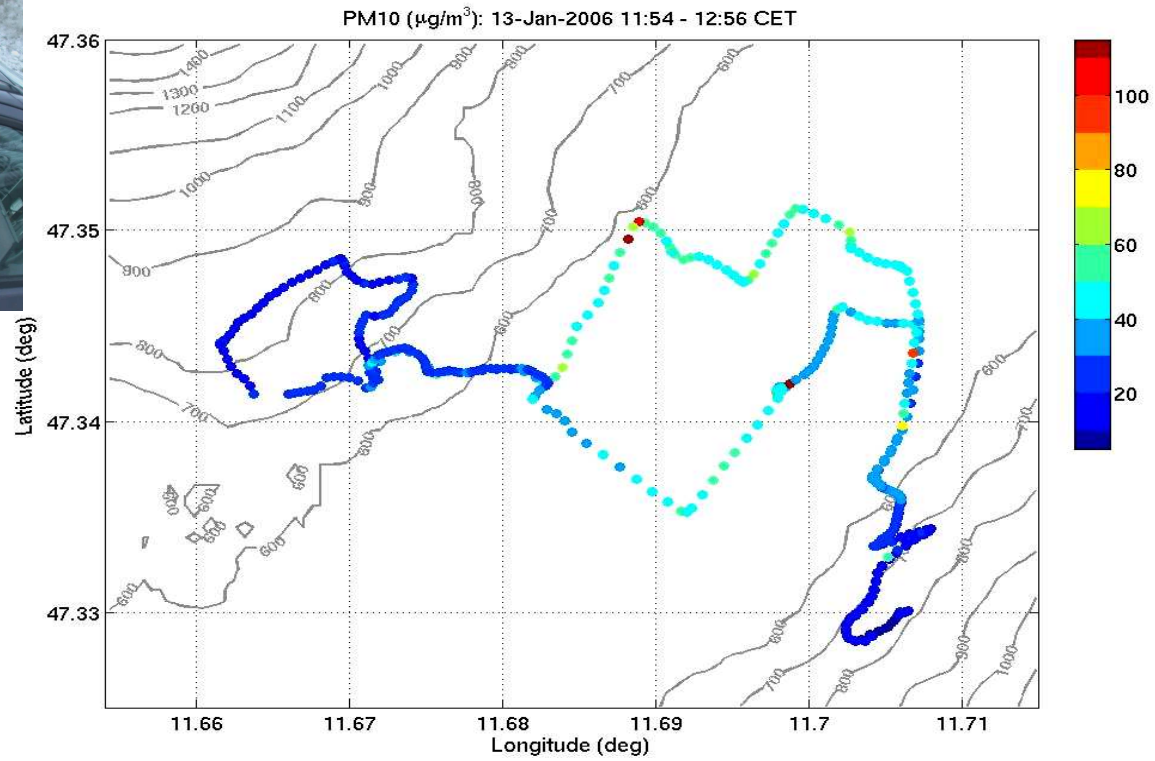


IMGI – ALPNAP – Feldmessungen (NO₂ Passivsammler im Talquerschnitt)

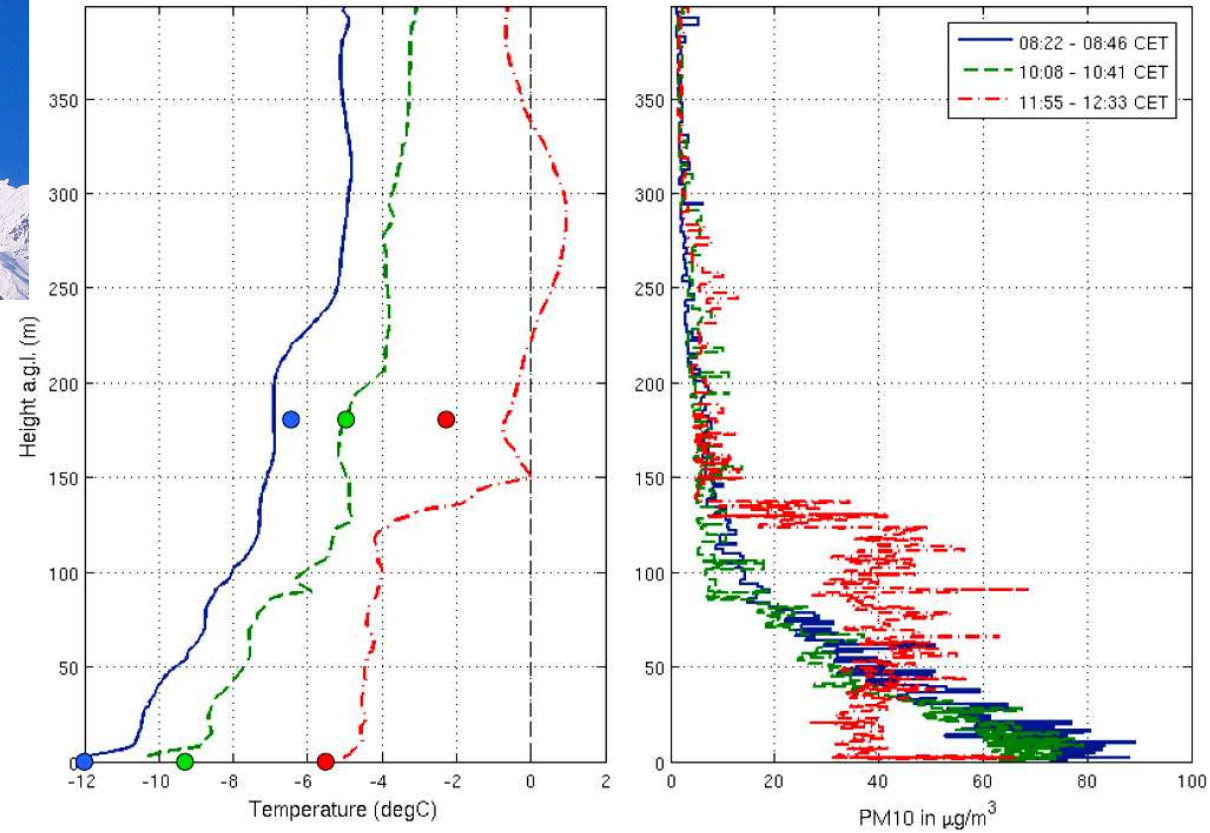




IMGI – ALPNAP – Feldmessungen (Automessfahrten)



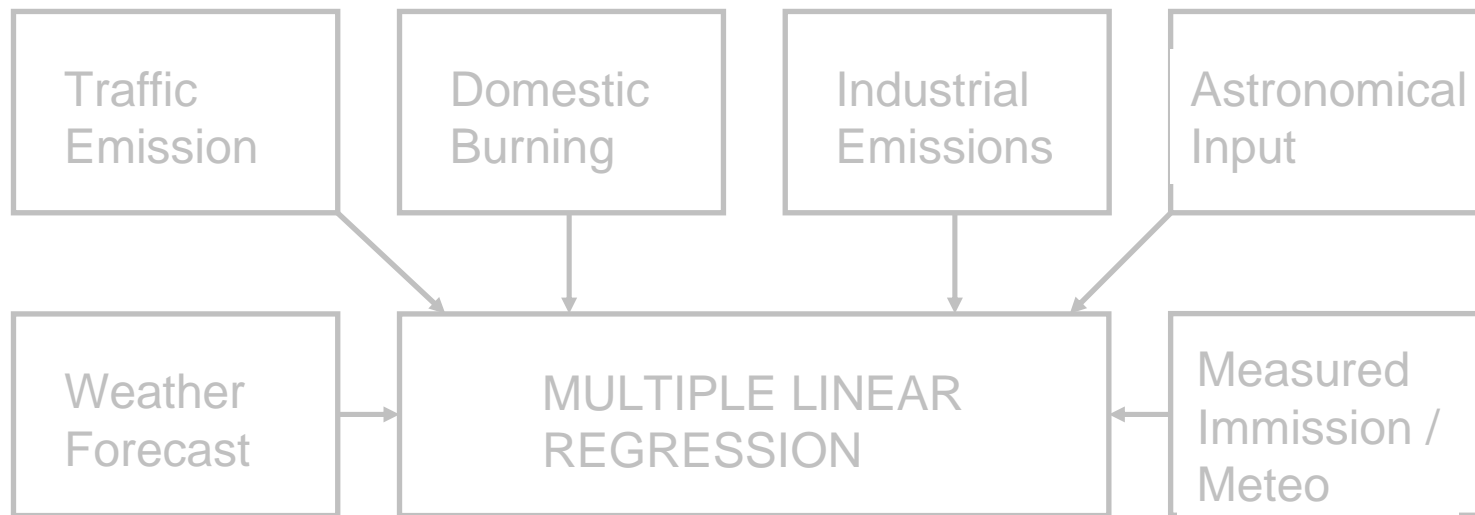
IMGI – ALPNAP – Feldmessungen (Fesselondierungen)

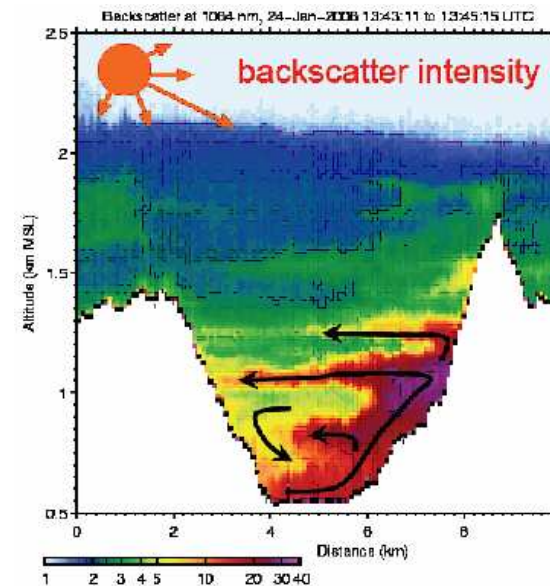
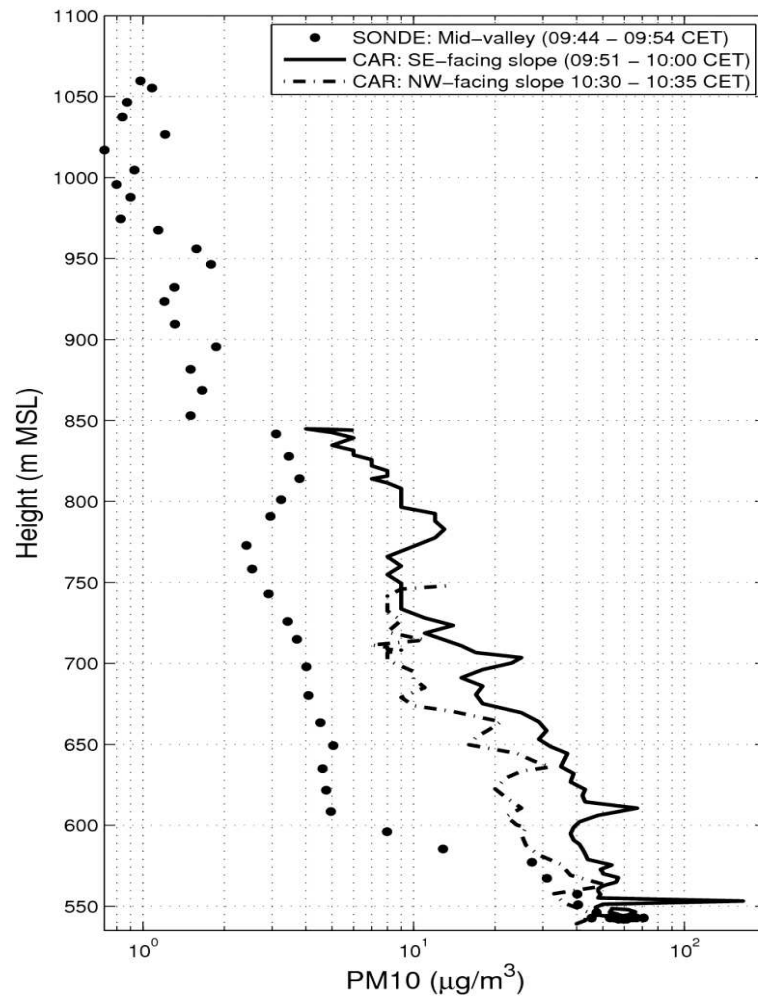




IMGI - ALPNAP - Modellierungen

(Kurzfrist-Vorhersagemodell für PM10, NO und NOx)







ALPNAP – Messungen

IMK-IFU Garmisch-Partenkirchen / Forschungszentrum Karlsruhe



In-situ



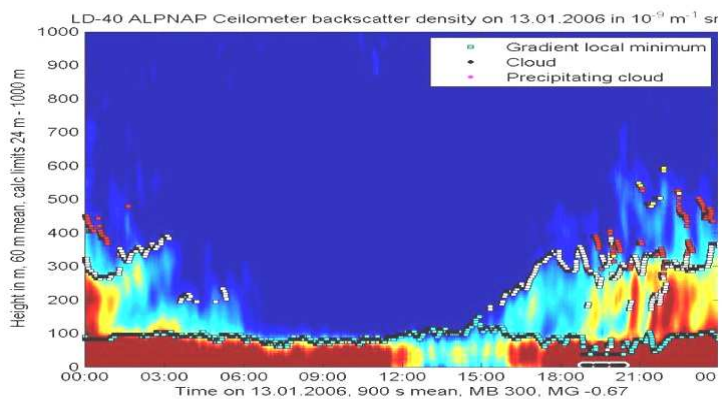
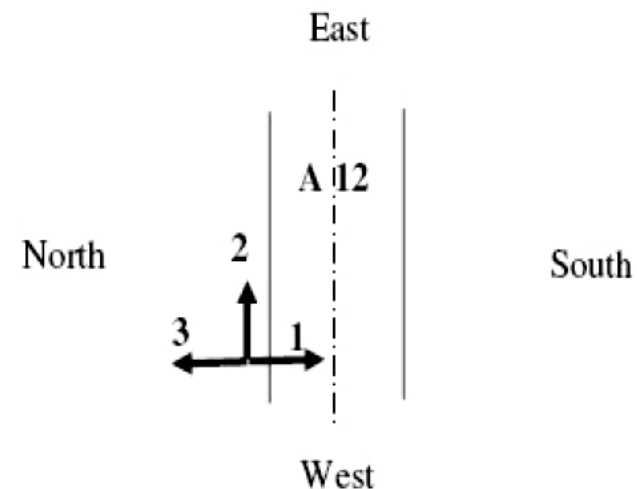
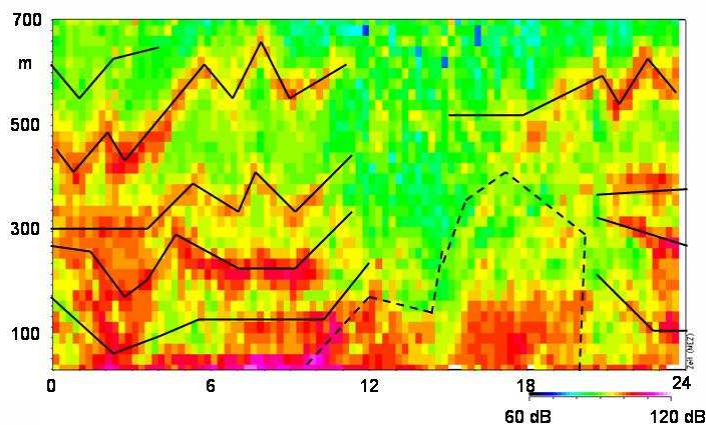
SODAR



Ceilometer



DOAS





ALPNAP - gesamt



- „Alpiner Raum“ (BN – BS – Frejus)
- Meteorologie – NO_x – PM₁₀ – Lärm – Gesundheit
- Comprehensive Report
- Broschüre
- MONITRAF
- gemeinsame Abschlusskonferenz (Innsbruck, 23.–26. Jänner 2008)

www.alpnap.org

www.monitraf.org

Danke für die Aufmerksamkeit !